

**Title**    **Suspect G&W Viper Reclosers - Recall**

**Priority 1: Requires Immediate Action**

**Issue Date:**    **April 15, 2014**

**Priority 2: Requires Action by:**

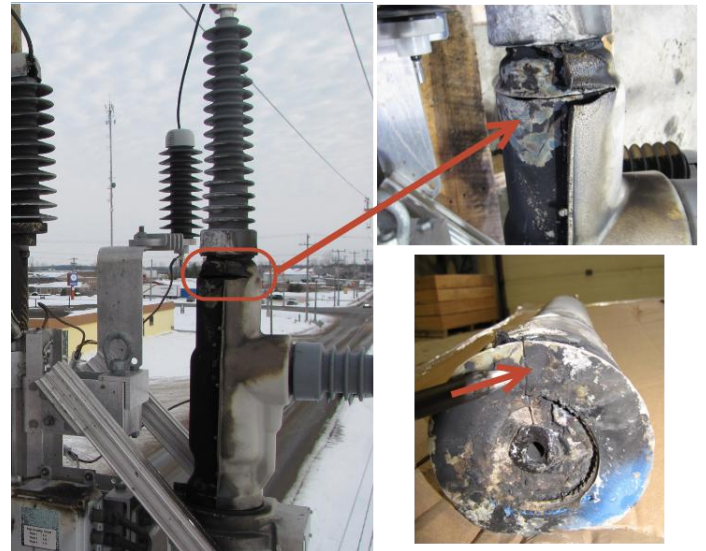
**Purpose**    **The purpose of this alert is to identify suspect G&W Viper Reclosers, and to locate uninstalled units for return to the vendor.**

**Details**    There have been 2 recent G&W Viper failures on Hydro One's system. These units have been identified by G&W as part of a potentially faulty batch of reclosers. The failure is due to an electrical breakdown and results in the formation of a mechanical crack at the top of the module, just below the ANSI interface as shown in *Fig 1*. The problem stems from rapid thermal expansion and contraction, and has been narrowed down to units manufactured within the 3 month window of March 2013 to May 2013.

The following serial #s are from the potentially faulty batch of reclosers. Recent G&W Viper Recloser installations and existing stock of Viper Reclosers are to be checked against this list:

E1283	E1284	E1372	E1373
E1375	E1395	E1425	E1436
E1437	E1438	E1439	E1440
E1441	E1443	E1445	E1446
E1447			

*Table 1: Serial #s of Potentially Faulty Vipers*



*Fig 1: Failed G&W Viper*

**Action**

If a recloser is identified from this list and the recloser is still on the ground:

- Set the recloser aside, tag it, and flag the Technical Contact below for return of the unit to the manufacturer.
- Fill out [the attached information](#) to assist with the investigation.

If a recloser is identified from this list, and has already been installed or energized:

- Fill out [the attached information](#) to assist with the investigation, and flag the Technical Contact
- Option 1: The unit can be replaced with a newer G&W Viper manufactured outside of the suspect date range.
  - Replacement orders and return of faulty reclosers can be organized through the Technical Contact
- Option 2: The recloser can be bypassed until the investigation has finished (anticipated resolution date June 2014).
  - Confirm with the Dx Planner and with Project Management the feasibility of this option.
  - Alternatively, discuss with the Technical Contact the feasibility of AC Hipot testing units which have not already been put into service.

If a recloser is identified from this list, and has already been in-serviced inside of a Station:

- Set up an Exclusion Zone of 3m
- Replace the faulty unit once a new recloser is ordered, and at the next available outage

**Technical Contact**

**Issued By**

**Name**    **Christopher Kleberg, 416-345-5726**

**Greg Towns, Director - Provincial Lines**