



# UTILITY REPORTER

OFFICIAL VOICE OF IBEW LOCAL UNION 1245 AFL-CIO

## USBR

### Kagel to hear impasse arbitration

After several days of negotiations between Local 1245 and the United States Bureau of Reclamation (USBR), the parties have agreed to arbitrate the remaining issues.

Business Representative Rich Hafner, chief spokesperson for the negotiating committee, reports that the Union and USBR began meeting October 31, 1988. Meetings on November 1, 2, 3, 8, and 9 did not produce agreement, so the parties met with a federal mediator on November 10. After several hours with the mediator, the Union and USBR agreed to submit the disputed issues to arbitration.

On December 6, after reviewing a list of arbitrators, the parties agreed on John Kagel to hear the impasse proceedings. The hearing is scheduled for March 2 and 3 in San Francisco. Rich Hafner told IBEW members that "I feel fortunate that we will be able to use the services of Mr. Kagel. We have used him before in arbitration with USBR and he is very familiar with all aspects of the



USBR Negotiating Committee (left to right): Jim Hudson, Rick Golden, Bill Chambers, Al Wright, Bob Gonzales and Don Day.

Bureau. We were also lucky to get the relatively early dates for the arbitration hearing, since his schedule usually is booked solid for at least six months."

In addition to Hafner, the Local 1245 negotiating committee consists of Bill Chambers, Don Day, Rick Golden, Bob Gonzales, Jim Hudson, and Al Wright.

## INSIDE

**Shasta Pin Dinner**  
Page 9

**Public Sector Bargaining News**  
Page 5

**Vietnam Vets Memorial Dedicated**  
Page 12

**Scholarship Applications**  
Page 11

**Tree Unit Meetings**  
Page 9

**Staff News**  
Page 4

## Lineman injured in serious accident

Local 1245 member Daniel C. Riddle, age 42, employed by PG&E (Sacramento Region) as a Lineman, made electrical contact while on a job in Rio Vista on December 16, 1988. We regret to report that the accident resulted in severe burns and the amputation of Brother Riddle's left arm below the elbow and his left leg at mid-calf.

Although the accident is still under investigation at this time, it appears that Brother Riddle was standing on a grounded cable TV messenger and was in the process of phasing with another Lineman. He reportedly had the end of the phasing tool in his left hand with the cord going up to the end of the other Lineman's hot stick; the other Lineman inadvertently contacted the 21KV line with his hot stick and the cord. The source traveled down the cord which connects to the phasing meter, entered the left hand, and came out the left foot and the right side of the body at chest level.

Brother Riddle's condition is continuing to improve. The members and staff of Local 1245 extend our deepest concern and best wishes to Brother Riddle and his family.

## Unions oppose further trucking deregulation



Representatives from Local 1245 joined hundreds of Teamsters' Union members and their supporters at a rally in San Francisco last month. The demonstration was called to oppose efforts by the California Public Utilities Commission (CPUC) to further deregulate state trucking.

The deregulation of the trucking industry in 1980 resulted in none of the anticipated savings to consumers, and instead has created widespread business closures among carriers, loss of jobs for thousands of workers, wage and benefit cuts for workers, and an increase in highway accidents involving commercial trucks.

Chuck Mack, President of Teamsters' Joint Council No. 7, describes deregulation as a situation where "the big are getting bigger and the small are getting destroyed." Deregulation has been costly for the public, and it has been devastating for union and non-union drivers alike.

Following the rally, participants marched to the PUC meeting where workers testified about the detrimental effects of deregulation.

Millie Phillips, PG&E Shop Steward, displays her opposition to trucking deregulation at Civic Center rally.

Photo: Kua Patten





# Local 1245 election notice

## Nominations open in March

The election process will begin in March of this year for officers and Advisory Council, with balloting in June for new three-year terms.

Complete information on nominations, elections, duties, and qualifications of officers are found in the Local Union Bylaws and the International Union Constitution. If you do not have copies of these documents, they may be obtained by writing to IBEW Local Union No. 1245, P.O. Box 4790, Walnut Creek, CA 94596.

### Offices

- The following officers shall be elected in accordance with Article XVIII of the IBEW Constitution and Article III of the Local 1245 Bylaws: President; Vice President; Recording Secretary; Treasurer; Business Manager-Financial Secretary; Southern Area Executive Board Member, Northern Area Executive Board Member, Central Area Executive Board Member, and At-Large Executive Board Member. The composition of the areas and at-large group represented on the Board are specified in Article III, Section 4 of the Local Union Bylaws.

- The designated Advisory Council seats are listed in Article V of the Local Union Bylaws.

### Qualifications

- Business Manager-Financial Secretary: The offices are combined per Article III of the Local Union Bylaws and must be filled by a member holding an "A" membership (EWBA) as required by Article XVIII of the IBEW Constitution.

- Members elected to office in the Local Union must be able and available to attend all regular and special meetings and to conduct the affairs of their office without compensation or other expenses other than provided for in Article X of the Local Union bylaws (*L.U. Bylaws Article III, Section 5*).

- Assistant Business Manager(s) and/or Business Representatives shall not be eligible to hold any elective Unit or Local Union office (*L.U. Bylaws Article III, Section 5*).

- To qualify as a candidate for Local Union office or Advisory Council Member, a member must have at least two years' continuous good standing in the Local Union immediately prior to March 1, 1989, and must have tendered his or her dues for January 1989 (*L.U. Bylaws Article III, Section 11*).

### Nominations

- Nomination of officers and Advisory Council members shall be made under "New Business" at the first meeting of the Units in March 1989 (*L.U. Bylaws Article III, Sections 6a and 6b*).

## Election process calendar

**March:** Nominations of officers at Unit meetings

**May:** Election Issue of *Utility Reporter*; ballots mailed to all eligible voters before June 1.

**June 1-22:** Mail ballot election held.

**June 22:** Ballots retrieved from Post Office box by election committee, then verified and counted. Results reported to all Unit Recorders immediately after certification.

**July 5:** Installation of officers.

- In order to be a candidate for any Local Union office, including Advisory Council Member, a member must be present at the Unit meeting where he or she is nominated, or notify the Local Union Recording Secretary, Barbara Symons, in writing on or before March 1, 1989, that he or she will run for a specific Local Union office if nominated (*L.U. Bylaws Article III, Section 12*).

- A member shall not accept nomination for more than one office of the Local Union (unless combined under the Bylaws). If a member is nominated for more than one office, he or she must notify the Judge of the Election promptly in writing, no later than April 15, 1989, for which office he or she will be a candidate and decline all other nominations for Local Union office (*L.U. Bylaws Article III Section 13*).

### Campaign financing

Article XVIII, Section 21 of the IBEW Constitution provides in part that "No candidate (including a prospective candidate) for Local Union office and no supporter of a candidate for Local Union office may solicit or accept financial support or any other direct or indirect support of any kind (except an individual's own volunteered personal time) from any nonmember of the Local Union or any foundation, corporation, or other entity whose funds are derived in whole or in part from any person not a member of the Local Union..."

The International Executive Council of IBEW has adopted regulations to enforce the above section. You may obtain a complete copy of these regulations from Local 1245 or by writing to the IBEW Ninth District office, 150 N. Wiget Ln. Suite 100, Walnut Creek, CA 94598.

The regulations define a "candidate" in part as a member who takes action directed toward seeking elections to the following positions in the Local Union: President, Vice President, Financial Secretary, Recording Secretary, Treasurer, Business Manager, or Member of

the Executive Board.

The IEC regulations also provide for an independent Campaign Contribution Administrator who investigates possible violations, and in turn requires candidates as defined above to file, on designated dates, campaign finance reports.

In addition, the regulations provide that each candidate fitting the above definition who has made expenditures totalling \$100 or more in support of his or her candidacy shall be required to file a campaign finance report with the International Secretary.

Campaign finance forms and instructions on completing those forms are also available from your Local Union or from the Ninth District office.

### Voting

As provided in Local Union Bylaws Article III, Section 15, the May issue of the *Utility Reporter* will contain "a list of all candidates for Local Union office, together with a factual record of their activities within the Local Union, committee assignments performed, offices held, and experience gained for and in behalf of the Local Union..."

Ballots will be mailed before June 1, 1989 and must be returned by June 22. To be eligible to vote, you must have paid your dues for March 1989 on or before May 31, 1989, per Bylaws Article III, Section 14.

### Further information

In addition to the Local 1245 Bylaws and the IBEW Constitution, the conduct of labor union elections is also covered by Title IV of the Labor-Management Reporting and Disclosure Act of 1959 (LMRDA). The U.S. Department of Labor publishes two relevant booklets: *Rights and Responsibilities Under the LMRDA and CSRA* and *Electing Union Officers*. These booklets are available by writing the U.S. Department of Labor, Office of Elections, 200 Constitution Avenue NW, Room No. North 5619, Washington, DC 20210.

## Utility Reporter

January 1989  
Volume XXXVIII NUMBER 1  
CIRCULATION: 24,500

**(415) 933-6060**

Business Manager  
& Executive Editor  
**JACK McNALLY**

Managing Editor  
**Jenny Lipow**

President  
**Howard Stiefer**

Executive Board  
**Ron Blakemore**  
**Barbara Symons**  
**Michael J. Davis**  
**Jim McCauley**  
**Kathy F. Tindall**  
**Lyman Morrison**

Treasurer  
**Ron Field**

Published monthly at 3063 Citrus Circle, Walnut Creek, California 94598. Official Publication of Local Union 1245, International Brotherhood of Electrical Workers, AFL-CIO, P.O. Box 4790, Walnut Creek, CA 94596.

Second Class postage paid at Walnut Creek and at additional mailing offices. USPS No. 654640, ISSN No. 0190-4965

POSTMASTER: Please send Form 3579, Change of Address, and all correspondence to Utility Reporter, P.O. Box 4790, Walnut Creek, CA 94596

Single copies 10 cents, subscription \$1.20 annually.



**WLPA**

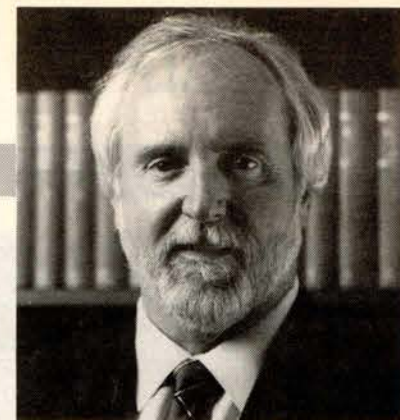
WESTERN LABOR PRESS ASSOCIATION



# POINT OF VIEW

By Jack McNally

IBEW Business Manager



## APPOINTMENTS

### PACIFIC GAS AND ELECTRIC COMPANY

#### Machinist, Mechanic, Rigger and Welder Committee

David Dow  
Joseph LaPenna

#### Pipeline Operations Joint Grievance Committee

James G. Lynn  
Ed Custer  
Jeff Wilson

#### Stockton Division Joint Grievance Committee

Gene Tibon  
Don Custer

#### East Bay Joint Grievance Committee

Carole Ann Pacheco

### DAVEY TREE SURGERY COMPANY

#### Negotiating Committee

Kenneth Bissmeyer  
Paul Dubois  
Frank Gratz  
Frank Gomez  
Alan Finocchio  
John Kenny  
Norm Langenes

### CENTRAL LABOR COUNCILS

#### Santa Clara County Central Labor Council

Jed Rehrig  
Derek Haley  
Sandra Weeks

## Unit 1123 - Merced meeting change

Meeting time and place changed to:

5:30 p.m.  
Sinaloa Restaurant  
950 Motel Drive, Merced

Meeting dates unchanged.

## Happy new year

### Looking back on 1988

The year 1988, like other years past, contained its share of challenges, rewards, and frustrations.

We completed general bargaining with many of our employers, but in some cases it was especially difficult. PG&E Clerical bargaining unit negotiations stretched out for nine months before our members ratified an offer. Sacramento Municipal Utilities District (SMUD) negotiations were delayed six months, essentially as a result of a June ballot measure to shut down SMUD's Rancho Seco Nuclear power plant. After SMUD voters gave "the Ranch" an 18-month reprieve, we were able to successfully complete general negotiations for our SMUD members.

1988 saw Local 1245 play a cornerstone role in organized labor's drive to collect 600,000 signatures to qualify a ballot initiative to restore Cal/OSHA, and then conduct a successful campaign to obtain passage of Proposition 97 in November.

In 1988, Local 1245 embarked on a very serious and concentrated effort to organize Arbor Tree employees who perform line clearance work for PG&E. The delays and ineffectiveness of the National Labor Relations Board (NLRB) have stretched out this organizing drive for more than a year, and as we go to press we still do not have a date for an election! We also initiated organizing efforts with operation and maintenance employees of co-generation and independent power producer plants, which we are hopeful will bear fruit in 1989.

### What's ahead for 1989

Drug testing was a critical issue for workers in 1988, and will retain its major importance on the 1989 agenda. While we have negotiated fitness-for-duty policies with some of our employers, we continue to have problems with the random drug testing issue, particularly in the federal sector. The Supreme Court is expected to issue precedent-setting rulings this term on the constitutionality of drug testing vis-à-vis the rights to privacy and due process. Federal regulations are near adoption, which will have an impact on many of our members in both the private and public sectors. Local 1245 condones neither the use of drugs nor the infringement of constitutional rights. We will be active in representing and protecting the rights of our members on this issue as it develops.

While we won the vote to restore Cal/OSHA, we must continue to closely monitor its start-up and restaffing. The petitions by California utilities to permit high voltage barehand and rubber gloving procedures will have to be addressed through the Cal/OSHA system. Our members have made their strong safety concerns known on these issues, and Local 1245 will continue our support for line workers in this area.

In 1989 we will continue or commence bargaining with several employers and prepare for a 1990 wage reopener for PG&E. With a new President for the United States, we are cautiously hopeful that we can begin to turn around the disastrous labor policies of the past eight years, including those of the NLRB. The pending appointment of Elizabeth Dole as Secretary of Labor may be an encouraging sign. In any event, Local 1245 stands ready to represent all of our members in the challenges yet to come, with all of our resources, creativity, and commitment at your service.

In unity,

A handwritten signature of Jack McNally in dark ink.



## New faces at Local 1245



Jane Brunner

### Jane Brunner Staff Attorney

Attorney Jane Brunner joined the Local 1245 legal staff this month. Born in New York City, Jane earned a B.A. in philosophy from the University of California at Berkeley and a master's degree in Special Education from the University of Oregon at Eugene.

Jane's teaching career began in San Mateo in 1974. In 1978 she took a job with the Berkeley Unified School District and became active in the Berkeley Federation of Teachers (AFL-CIO). Jane served on the BFT negotiating committee for five years, and was a member of the Union's executive board and grievance committee. She helped to coordinate the BFT's successful one-day teacher strike in 1986.

While working, Jane attended Hastings College of Law in San Francisco, earning her degree in 1987. Prior to her appointment to the Local 1245 staff, Jane did legal work for the California Teachers Association (CTA). She also handled several cases for Local 1245 on a freelance basis in the latter part of 1988.

Jane and her husband Wendel, the Director of Public Health for Contra Costa County, live in Oakland. The Brunners have a daughter, Kira, 15, and a son, Kevin, age 11. Jane's hobbies are cross country skiing and reading.

Jane told the *Utility Reporter* that she is looking forward to working full-time for the Local. "The cases I handled for Local 1245 last year were very challenging," said Brunner "and as a Union activist myself, I'm especially pleased to be working in the area of labor law."

### Gary Hughes Business Representative

PG&E Gas Control Mechanic Gary Hughes has been appointed to a Business Representative position by Business Manager Jack McNally after having served in a temporary capacity since September 1988.

Gary, a native of Long Beach, CA, has worked for PG&E since 1967. He's been a shop steward since the mid-seventies, and was formerly the Stockton Unit Vice Chair. Gary also served on the interim negotiating committee for Pipe Line Operations.

Gary is married to Linda Nadeau,

a bookkeeper. Between them, Gary and Linda have two daughters and one granddaughter. They enjoy golfing and reading and "restoring old things" like furniture and cars (Gary once raced stock cars professionally).

"I've enjoyed the last few months of Business Representative work," Hughes told the *Utility Reporter*. "I've learned a lot and I'm looking forward to my new assignment in the San Jose area."



Gary Hughes



Bob Martin

### Bob Martin Business Representative

Bob Martin, a familiar face to many Local 1245 members, has been appointed as a Business Representative effective January 9. Bob has been an Advisory Council member since May 1988 and is a long-time Shop Steward in the PG&E Clerical Unit.

Bob began working for PG&E in 1971, and has held numerous positions in the Company, most recently as a Control Technician. He's been the Antioch Unit Recorder since 1979, and has served on the Safety Committee. Bob also represents Local 1245 on the Contra Costa County Central Labor Council.

Originally from Moultrie, Georgia, Bob stayed in California after his "seven years and two months" in the Navy were up. Bob lives in Antioch, where he is active in local politics and civic affairs, serving as an appointed representative to the City's Waterfront Committee.

Bob and his "better half," Cleo, have two children—a girl and a boy—and in his spare time, Bob enjoys (in alphabetical order) fishing, reading, and skiing. His initial assignment will be doing computer operations projects for the Local.

## Trouble In Paradise?



Local 1245 members in PG&E's Paradise Electric Department were photographed in a peaceful moment by Business Representative Scott Thomas.



## Sacramento Regional Transit District

Bargaining begins

Business Representative Jack Osburn reports that negotiations between Local 1245 and the Sacramento Regional Transit District were scheduled to start January 10. Members submitted numerous proposals at two different Unit meetings. These proposals were carefully reviewed in turn by the negotiating committee earlier this month prior to the start of talks with management representatives.

In addition to Osburn, the committee's chief spokesperson, the Union team's members are as follows: from Light Rail—Mike Giannini, Track Worker and Tim Kent, Lineman. From Maintenance—Wes Duvall, Partsman; Larnell Gill, Body Fenderman; and Robert Ruiz, "A" Mechanic.

## Richvale Irrigation District

M.O.U. gets unanimous "yes" vote

Members in the Richvale Irrigation District have unanimously voted to ratify a one year agreement effective on January 1, 1989 which features a four percent across-the-board salary increase. The package, approved on December 21, also features an increase in dental and vision care self-funding by the District from \$400 to \$500 per year (a 25% increase) and an increase in the cumulative health benefit cap from \$1200 to \$1500 (also a 25% raise). The Union negotiating committee consisted of Business Representative Jack Osburn and Tom Edwards; Ron Rogers was the alternate.

## City of Oakland

3-year M.O.U. Provides 17% increase

On December 14, City of Oakland members overwhelmingly ratified a 3-year Memorandum of Understanding (M.O.U.) retroactive to July 9, 1988 which features 17% in salary increases over the life of the agreement. The Local 1245 Negotiating Committee included Ed Myall, James Mahoney, Robert Glaze, and John Hendry (Ron Davis left the bargaining unit during the course of negotiations). Business Representative Frank Saxsenmeier served as chief spokesperson for the committee.

The salary increases are staggered as follows: 2% effective July 9, 1988; 4% effective December 24, 1988; 2% effective June 24, 1989; 4% effective January 6, 1990; 2% effective June 23, 1990; and 3% effective January 5, 1991. The last in-

crement is subject to a reopener if the CPI from November 1989 to November 1990 falls below 3% or above 10%.

The package also includes improvements in the dental plan (preventive and orthodontia benefits increased), an increase in the meal allowance from \$5 to \$7 retroactive to July, and significant increases in the sick leave buyout on retirement with ten or more years (formerly 33 1/3%); in July of 1988, the percentage rises to 40%, and goes to 50% in July 1989.

Saxsenmeier told the *Utility Reporter* that he appreciated the professionalism of the committee in exercising patience during the long and ultimately successful negotiating process.

## Oroville - Wyandotte Irrigation District

Reopener wins member approval

On December 1, members in the Oroville-Wyandotte Irrigation District voted to ratify a proposed settlement on the wage reopener for 1989. Increases effective January 1, 1989 are as follows: Water Division, 3.2% (rounded up to the next five cents per hour); Power Division, 2.75% (parity with PG&E). The parties also agreed on a new medical plan carrier effective December 1, 1988.

The Union negotiating committee included Bob Warka, First Operator; Bill Bray, Warehouseman; Bob Strassner, Treatment Plant Operator; Local 1245 Business Rep Jack Osburn; and alternate member Doug McMaster, Treatment Plant Operator. Osburn, the committee's chief spokesperson, expressed appreciation for the commendable effort of the committee members.

## UNION SHOPPER NOTICE

Due to heavy demand, we are currently out of stock on some items. Back orders will be shipped as soon as possible.

Please note a price increase in the Lineman Pins—they are now \$5.00.

## ATTENTION LOCAL 1245 RETIREES

Are you interested in joining or helping start a Retirees Club chapter in your area? If so, please fill out this form and send to:

IBEW LOCAL 1245 RETIREES CLUB  
Attention: Thomas D. Riley  
P.O. Box 4790  
Walnut Creek, CA 94596

YES, I am interested in participating in Local 1245 Retirees Club activities. Please contact me with more information.

NAME \_\_\_\_\_

ADDRESS \_\_\_\_\_

CITY, STATE, ZIP CODE \_\_\_\_\_

AREA CODE, PHONE NUMBER \_\_\_\_\_



## Manteca T&D yard

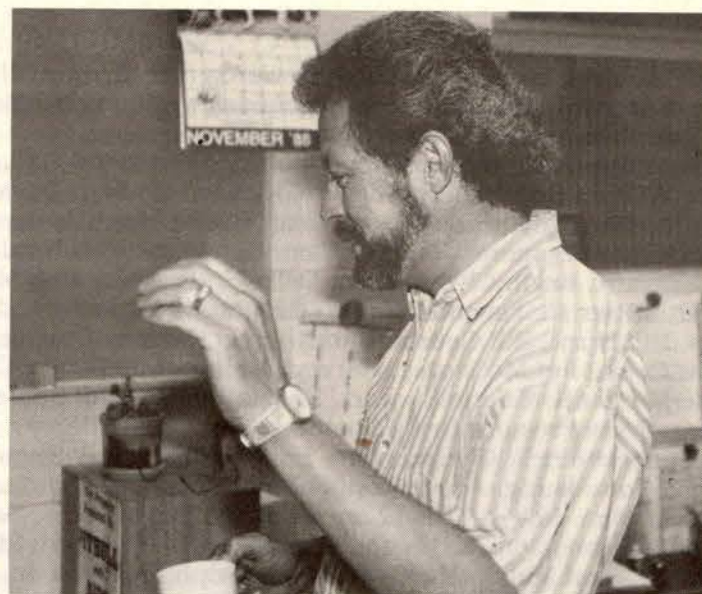
Local 1245 Vice President Ron Blakemore, a Lineman in the Manteca yard, recently took these photographs of his co-workers.



## Oakland unit meeting







Managing Editor Jenny Lipow took these photos at the Unit 2311 (Oakland) meeting in December. The Unit meets the first Thursday of the month at The Flanker restaurant on Hegenberger Road.

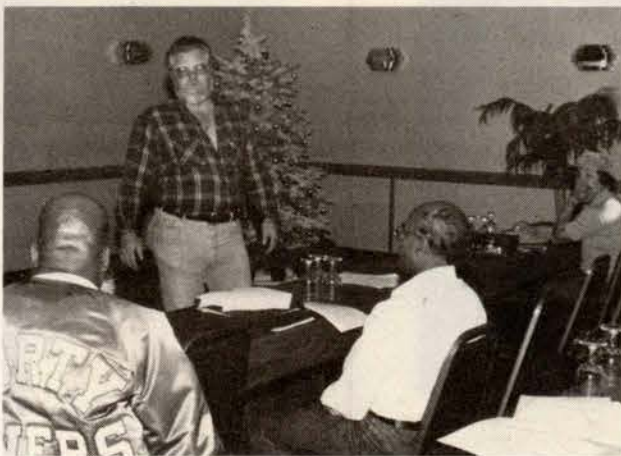




# Concord Stewards workshop

Nearly one hundred Local 1245 Shop Stewards attended an all-day workshop sponsored by Walnut Creek headquarters that was held Saturday, December 3 at the Concord Sheraton.

The Stewards attending the workshop included Raymond Gallagher, Roger Taylor, William Smith, Jerry Meyers, Richard Cowart, David Gibson, Jim Findley, Lloyd Stottsberry, Larry Bunte, Jerry Anderson, Ann Agnew, Barbara Symons, Robert Olsen, Ken Cuneo, Richard Ihrig, Donald Bettencourt, Kevin Christensen, Della Underwood, Bob Martin, Stan Clark, Jim Parrish, David Meier, Fred Hubbard, Stanley Fedornak, Walter Mims, Bill Hunt, Bill Coutts, Randy Greer, Barney Curtice, Dada Rao, Barbara Cook, Jim McCauley, Harvey LaShon, Sue Longo, Carol Turk, Debbie Mazzanti, Valerie Stewart, Norma Ricker, Cliff Spaletta, Philip Pavana, Doris Preston, Craig Spalding, Jon Gross, Barry Claybaugh, John Mitchell, George Allan, Ron Connelly, Ray Shepherd, John Wimmer, Tom Young, Aileen Koppenberg, Harry Hom, Julian Evans, Bryant Bolen, Robyn Trost, Laura Tucker, Betsy Davis, Sarah Lake, Clifton Jackson, Gene LeMaster, Tommy Mills, Theodore Rios, Chris Mangante, Paul Dubois, B. Smallwood, Ralph Freeland Jr., Ken Rawles, Joy Giorgi, Herman Reuther, Jerry DeBaca, Terry MacLeod, Richard Brun, Chuck Steffano, and Mike Fontana.



Photos: Jenny Lipow



## Shasta pin dinner

The pin awards dinner for Local 1245 members in the Shasta region was held December 2 at the Bridge Bay Resort and Marina in Redding. Awards are presented to members of the Union who have attained milestones of twenty years or more with the Local.

The following people were honored at the Shasta banquet (not all attended). **40 years:** Harold Holstrom. **35 Years:** Ken Coyle, T.R. Maze, Doss McKinney, Jr. **30 Years:** Cecil Langberg, A.D. Loewen, J.V. Maxey, Noel McBroome. **25 Years:** Kenneth Bertagna, Wes

Conrad, G.V. Crutchfield, Thelma Dowell, Clinton Etherton, Terry Fleming, C.D. Johnson, Lawrence Johnson, Neva Landa, C.A. Scott, Luigi Tavolazzi, Leonard Vanharpen, Richard Wagner, Walter Work. **20 Years:** Sammy Baugh, Phil Begley, Roland Boger, Donald Brannan, Allen Buck, Jake Churchwell, C. Gilbert, Sammy Hanes, Laurence Jasperse, Jerry Kral, Charles Michaels, Larry Miller, Gregory Molakides, Glenn Moon, Fred Pedersen, William Rye, George Scalvini, Howard Walter.



40 years: Harold Holstrom (Outside Line) and his wife Doris.



35 years: Ken Coyle, PG&E.



25 years (Left to Right): Luigi Tavolazzi, Kenneth Bertagna, Thelma J. Dowell, C.D. Johnson, Richard Wagner, Clinton Etherton.



20 years (Left to Right): Fred Pedersen, Charles Michaels, Sammy Hanes, Phil Begley, Gregory Molakides.

## More tree unit meetings

By Jim Travis

Tree member unit meetings have really branched out lately. Strong union support has blossomed in recent months as Asplundh and Davey Tree members go out on a limb to attend Local 1245 unit meetings around the state. These union trimmers brush aside any twig of doubt as to their deep rooted desires to really make something of their union membership.

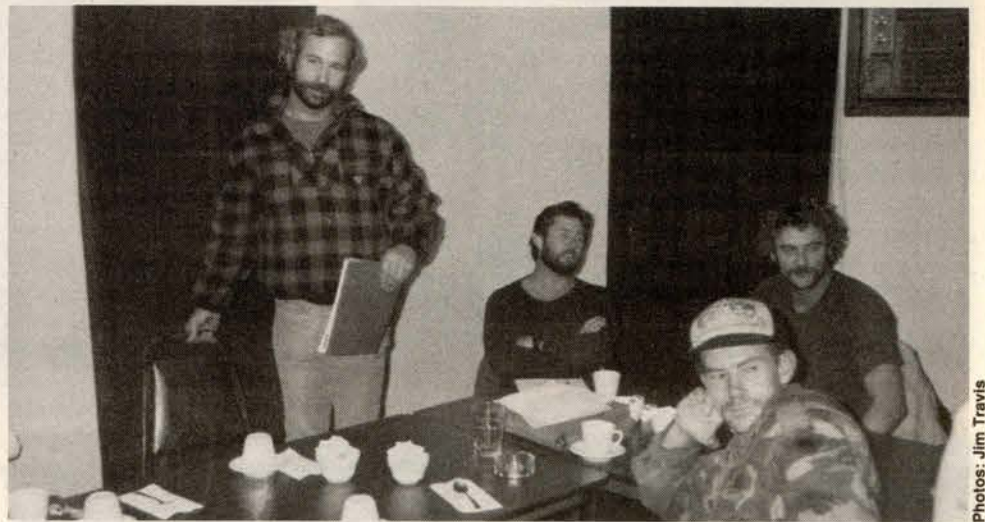
These members are not board with the issues or stumped by challenges to progress in the line clearance industry. Says one trimmer, a tree trunk of a man. "We wooden want to leaf our future in anyone else's hands. We will lumber forward on our own. That is the timber of us tree men. Our bite and our bark are both bad (Not to mention our puns)!"

### San Jose



Davey Tree, San Jose  
Meets the fourth Wednesday of the month at the Carpenters' Hiring Hall. Chair: Derek Haley; Vice Chair: Jed Rehrig; Recording Secretary: Kevin Smith; Business Representative: Enid Bidou.

### Santa Cruz



Davey Tree, Santa Cruz (Aptos)  
Meets the third Wednesday of the month at Adolph's Restaurant. Chair: Keith Neal; Recording Secretary: John Kenney; Business Representative: Larry Pierce.





## Local 1245 "Turkey Shoot" is a big success

by Lou Anzaldo  
Event Organizer

The 1988 "Turkey Shoot," held November 5, was a big success. I want to thank all the players for making this a fun tournament. We gave out 29 turkeys and \$360 in cash prizes. In order to have as many winners as possible, players were limited to one turkey certificate, so if a player won a second event the runners-up got the prize.

Tournament Results (prizes went to each team member):

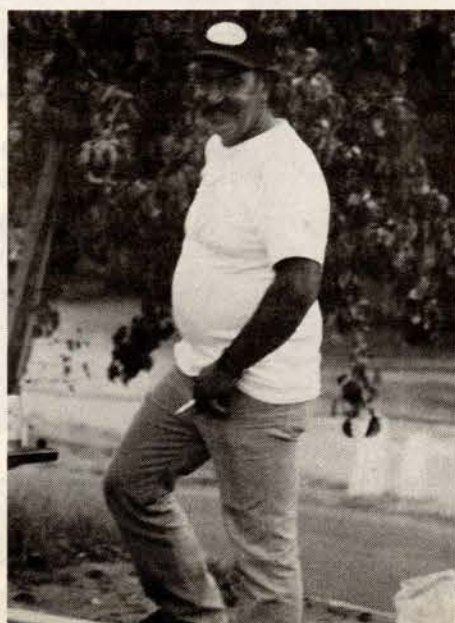
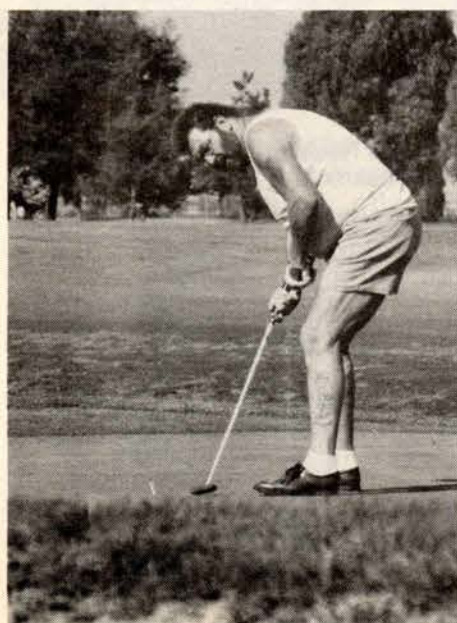
WINNER (\$25, turkey): Tino Venzor & Mel Stevens — Score: 69.

SECOND PLACE (\$15, turkey): Marty Lepo & Art Lawrence — Score: 71.

HIGH SCORE (\$15 pro shop certificate, turkey): Ron Ingersol & Burt Barham — Score: 88.

LONG DRIVE (\$25) Marty Lepo & Art Lawrence; Runners-up (turkey): Paul Lawrence & Fred Mertz.

CLOSEST TO HOLE (\$15, turkey): Hole 5, Marty Lepo & Art Lawrence (10'); Runners up, Gino & Carl Campiotti (15'4"). Hole 8, Casey Cheuk & Howard Marks (19'8"). Hole 14, Bob Douglas & N. Peters (11'7"). Hole 17, Tino Venzor & Mel Stevens (10'6"); Runners-up John Mori & Ross Fowler (17').



Photos: Lou Anzaldo



# Scholarship applications

## Al Sandoval Memorial Competitive Scholarship

The purpose of this contest is to provide a grant in aid for scholarships to colleges and junior colleges, thereby making financial assistance toward the attainment of a higher education.

1. The grant will be as follows:

**\$500 per year, up to four (4) years**, as long as a "C" (2.0) average is maintained, and a parent maintains membership in good standing in Local Union 1245.

2. In order to be a candidate in this contest, you must be a son or daughter, natural, legally adopted, or a legal ward of a member of Local Union 1245. You must also be a high school student who has graduated or is graduating in 1989. A copy of your diploma or a letter from your high school stating that you will graduate in 1989 must be attached to your scholarship application.

3. The scholarship grant will be made only to that candidate who intends to enroll full time in any college certified by their State Department of Education and accredited by the local accrediting association.

4. Applications may be secured by addressing the Recording Secretary of Local Union 1245, or by calling the Union office, or by using the form printed below.

5. Checks will be paid directly to the college upon presentation of tuition bills to the Local Union.

6. All applications shall be accompanied by a written essay, not to exceed five hundred (500) words, on the subject designated by the Executive Board.

7. Essays should be submitted on 8 1/2" by 11" paper, on one side, preferably typed and double spaced, with applicant's written signature at the conclusion of the essay.

8. Applications and essays must be mailed to IBEW Local Union 1245, P.O. Box 4790, Walnut Creek, CA 94596, by registered or certified mail only, and be postmarked no later than **Monday March 6, 1989**.

9. Each year the scholarship shall be presented at the Advisory Council meeting in May; the judge and a guest and the recipient and parents shall be invited, at Local Union expense, to present and receive the scholarship award.

10. A suitable trophy or plaque shall be purchased by the Local Union, at a cost not to exceed \$75, to be presented to the scholarship recipient.

**NOTE: THE TOPIC FOR THE 1989 AL SANDOVAL MEMORIAL COMPETITIVE SCHOLARSHIP ESSAY IS "IS THE NEW GENERATION OF UNION MEMBERS DEMOCRAT OR REPUBLICAN?"**

The following two questions are to be answered in the essay:

1. What have you seen and learned about labor during your school years?
2. What do you think should have been taught?

### APPLICATION FOR THE AL SANDOVAL MEMORIAL COMPETITIVE SCHOLARSHIP

Sponsored by

LOCAL UNION 1245

INTERNATIONAL BROTHERHOOD OF ELECTRICAL WORKERS, AFL-CIO

P.O. Box 4790  
Walnut Creek, CA 94596

Telephone  
(415) 933-6060

DATE \_\_\_\_\_

I hereby make application to enter the Competitive Scholarship Contest sponsored by Local Union 1245, IBEW, AFL-CIO:

NAME \_\_\_\_\_ DATE OF BIRTH \_\_\_\_\_  
(Last) (First) (Initial)

ADDRESS \_\_\_\_\_  
(Street) (City)

(State) (Zip) PHONE( ) \_\_\_\_\_

NAME OF PARENT \_\_\_\_\_

COMPANY \_\_\_\_\_

WORK LOCATION \_\_\_\_\_

I GRADUATED OR WILL GRADUATE FROM \_\_\_\_\_

HIGH SCHOOL IN \_\_\_\_\_

WHICH IS LOCATED AT \_\_\_\_\_

I EXPECT TO ATTEND \_\_\_\_\_ COLLEGE OR SCHOOL

LOCATION \_\_\_\_\_

(Candidate's Signature)

This is to certify that the above named candidate is currently enrolled as a student at \_\_\_\_\_ and has or will be graduating in \_\_\_\_\_, 1989.

(Official's Signature and Position)

This is to certify that I am a member in good standing of Local Union 1245, IBEW, and the candidate, whose name is signed to this application is my \_\_\_\_\_, and graduated during the term ending \_\_\_\_\_, 1989.

(Parent's Signature and Card Number)

## Trade and Vocational School Grant

The purpose of these grants is to provide aid to the children of members to attain a trade or technical education.

1. The grants will be as follows:

**\$500 per year**, for up to **two years** for two candidates, as long as a passing grade is maintained, and a parent maintains membership in good standing in Local Union 1245.

2. In order to be a candidate in this contest, you must be a son or daughter, natural, legally adopted, or a legal ward of a member of Local Union 1245. You must also be a high school student who has graduated or is graduating in 1989. A copy of your diploma or a letter from your high school stating that you will graduate in 1989 must be attached to your application. Additionally, a letter of recommendation from your vocational teacher, department head, or school principal must accompany the application.

3. Applications may be secured by addressing the Recording Secretary of Local Union 1245, by calling the Union office, or by using the form printed below.

4. The grant will be made only to a candidate who intends to enroll full time in any industrial, technical or trade school, (other than correspondence schools) which are accredited by the National Association of Trade and Technical Schools or the Association of Independent Colleges and Schools.

5. Applications must be mailed to IBEW, Local Union 1245, P.O. Box 4790, Walnut Creek, CA 94596, by registered mail or certified mail only, and be postmarked no later than **Monday April 3, 1989**.

6. Two names will be drawn by the Judge of the Competitive Scholarship Contest from those submitting applications. These two will be recipients of the grants.

7. Checks will be paid directly to the school upon presentation of tuition bills to the Local Union.

8. Presentation of awards will be made to recipients at the unit meeting nearest his/her residence following the drawing.

### APPLICATION FOR THE LOCAL 1245 TRADE & VOCATIONAL SCHOOL GRANT FOR MEMBERS' CHILDREN ENROLLING IN TECHNICAL, INDUSTRIAL, OR TRADE SCHOOLS

Sponsored by Local Union 1245  
International Brotherhood of  
Electrical Workers, AFL-CIO

P.O. Box 4790  
Walnut Creek, CA 94596  
(415) 933-6060

### CANDIDATE INFORMATION

CANDIDATE'S NAME \_\_\_\_\_ BIRTH DATE \_\_\_\_\_

ADDRESS \_\_\_\_\_ CITY \_\_\_\_\_

STATE \_\_\_\_\_ ZIP \_\_\_\_\_ PHONE( ) \_\_\_\_\_

HIGH SCHOOL \_\_\_\_\_ GRADUATION DATE \_\_\_\_\_

ADDRESS OF HIGH SCHOOL \_\_\_\_\_

WHAT SCHOOL DO YOU EXPECT TO ATTEND? \_\_\_\_\_

WHERE IS IT LOCATED? \_\_\_\_\_

WHAT TRADE OR CRAFT WILL YOU BE STUDYING? \_\_\_\_\_

WHY THIS PARTICULAR SKILL? \_\_\_\_\_

CANDIDATE'S SIGNATURE \_\_\_\_\_ DATE \_\_\_\_\_

### STATEMENT OF MEMBER/PARENT

NAME OF MEMBER/PARENT \_\_\_\_\_

EMPLOYER \_\_\_\_\_ LOCATION \_\_\_\_\_

I certify that I am a member in good standing of IBEW Local Union 1245, that the Candidate named above, \_\_\_\_\_ is my \_\_\_\_\_, and that the Candidate will graduate from high school during the

term ending \_\_\_\_\_, 1989.

Signature of Member/Parent \_\_\_\_\_ Union Card No. \_\_\_\_\_

This is to certify that the above named Candidate is currently enrolled as a student at \_\_\_\_\_ and has or will be graduating in \_\_\_\_\_, 1989.

Official's Signature and Position



# Vietnam Veterans Memorial

## California monument dedicated

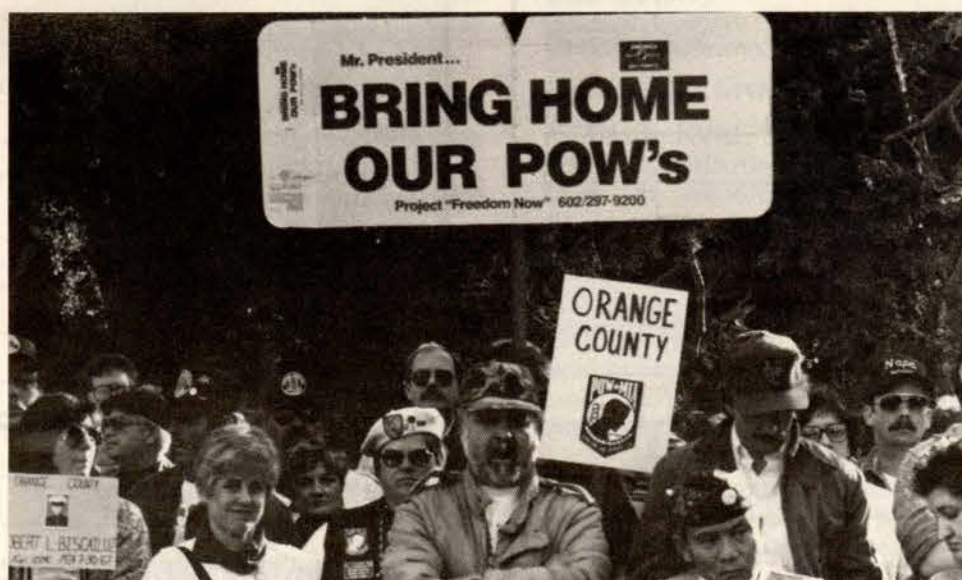
Thousands of California veterans and their families attended dedication ceremonies for the new Vietnam Veterans Memorial in Sacramento December 10. Many Local 1245 members who had served, or lost friends or relatives in the war, were present for this momentous occasion.

The memorial is the result of five years of fundraising, to which Local 1245 contributed. It displays four circular walls, with 22 black granite

panels etched with the names of the state's 5,822 dead and missing soldiers. The names are listed alphabetically by hometown and include rank, branch of service and age at date of casualty.

Inside the walls are a central figure of a nineteen year old soldier reading a letter from home. There is also a figure of a military nurse, as part of the memorial commission's effort to recognize the incalculable contribution of female veterans.

D., 23, USMC ★ PFC Howard, David T., 21, USA ★  
Henry C., 31, USA ★ PFC Preston, Ross M., 20, US  
★ SP4 Perry, Steve J. L., 21, USA ★ LA JOLLA ★ C  
quez, Arturo S., 22, USA ★ LA MESA ★ Sgt. Baum,  
USA ★ SN DiNapoli, Michael J., 20, USN ★ Sgt. Hab  
MC ★ SSgt. Laframboise, Phillip D., 28, USA ★ PFC  
W., 21, USA ★ Sgt. Rose, Paul W., 26, USA ★ SSg  
ymond, 26, USA ★ PFC Vater, Dieter R., 21, USMC  
PFC Burri, Miguel R., 20, USMC ★ SP4 Hammar, Ja  
PFC Martin, Joseph C., 21, USMC ★ PFC Moore, L  
Sgt. Rodriguez, Encarnasion, 21, USA ★ PFC Rome



Photos: Jenny Lipow