

PACIFIC GAS AND ELECTRIC COMPANY

PGE + 215 MARKET STREET • SAN FRANCISCO, CALIFORNIA 94106 • (415) 972-7000 • TWX 910-372-6587

November 23, 1988

Local Union No. 1245
International Brotherhood of
Electrical Workers, AFL-CIO
P. O. Box 4790
Walnut Creek, California 94596

Attention: Mr. Jack McNally, Business Manager

Gentlemen:

This letter serves as an update of the list of confidential employees headquartered at Diablo Canyon Power Plant and to propose an addition by reclassifying an existing Routine Plant Clerk to Secretary C.

On July 1, 1988, the Plant reorganized its Assistant Plant Managers. The responsibilities of the Assistant Plant Manager/Plant Superintendent were divided by establishing an Operations Services Assistant Plant Manager and a Maintenance Services Assistant Plant Manager. Under this new organization, the confidential secretary that had previously reported to the Plant Superintendent is now assigned to the Maintenance Services Assistant Plant Manager and the Routine Plant Clerk, Ms. D. Parker, is reporting to the Operations Services Assistant Plant Manager. Organizational charts are attached for further clarification.

In Ms. Parker's new capacity, she has access to confidential Company bargaining proposals, correspondence regarding personnel decisions and disciplinary actions, and may type confidential documents and letters. The two other clerical employees in her work location are also confidential secretaries. Therefore, based on the sensitive nature of her position and the work group, it is appropriate to reclassify her position and exempt her from bargaining-unit status.

Also attached is the updated list of confidential employees headquartered at Diablo Canyon Power Plant.

If you are in accord with the foregoing and attachment and agree thereto, please so indicate in the space provided below and return one executed copy of this letter to the Company.

Yours very truly,

PACIFIC GAS AND ELECTRIC COMPANY

By Richard B. Bradley
Manager of Industrial Relations

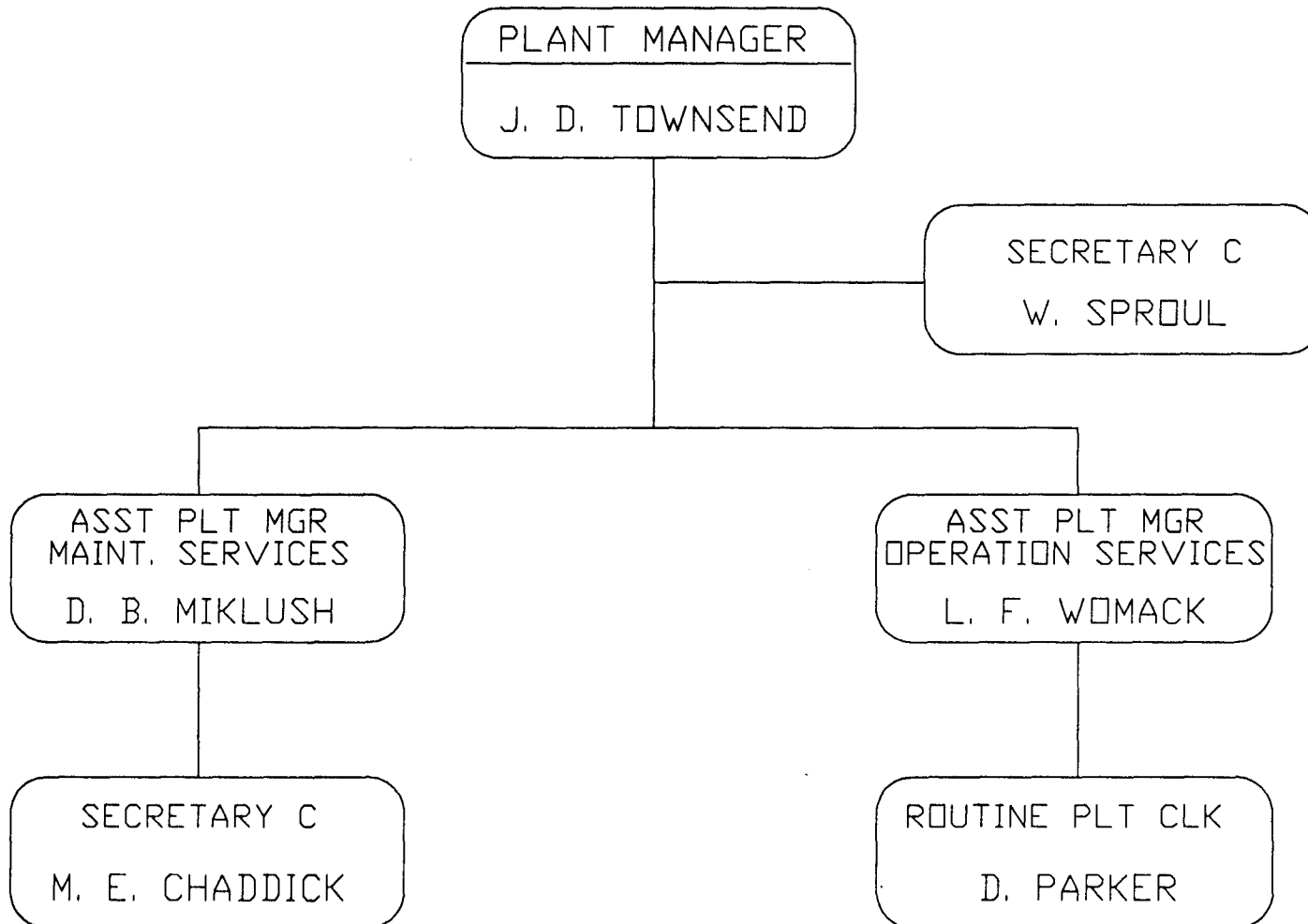
The Union is in accord with the foregoing and attachment and agrees thereto as of the date hereof.

LOCAL UNION NO. 1245, INTERNATIONAL BROTHERHOOD OF ELECTRICAL WORKERS, AFL-CIO

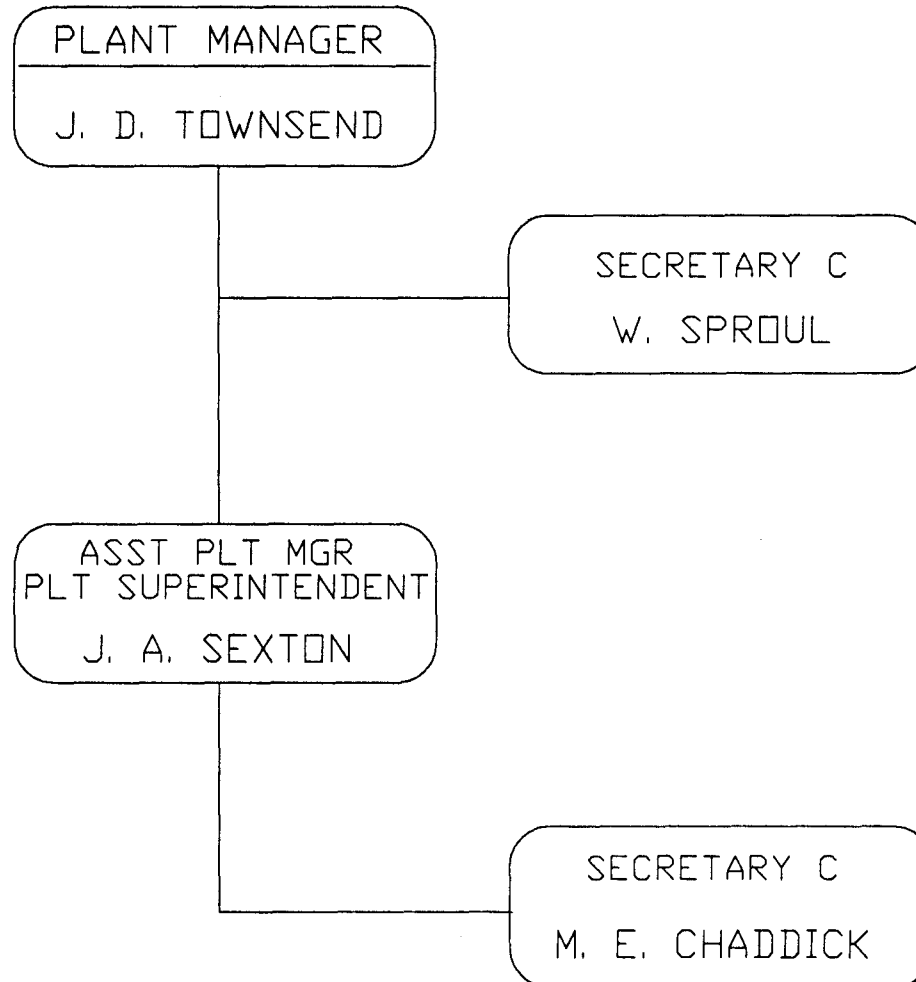
Dec 16, 1988

By Jack McHenry
Business Manager

NUCLEAR POWER GENERATION
DIABLO CANYON POWER PLANT
ORGANIZATION AFTER JULY 1, 1988



NUCLEAR POWER GENERATION
DIABLO CANYON POWER PLANT
ORGANIZATION PRIOR TO JULY 1, 1988



List of Confidential Employees
DIABLO CANYON POWER PLANT

<u>NAME</u>	<u>CLASSIFICATION</u>	<u>IN OFFICE OF</u>
Baskett, S.	Secretary C	Human Resources
Chaddick, M. E.	Secretary C	Plant Manager
Hays, N.	Secretary C	Human Resources
Ingram, D. L.	Secretary C	Human Resources
Parker, D.	Secretary C	Plant Manager
Renteria, K.	Secretary C	Human Resources
Sproul, W.	Secretary C	Plant Manager
Witt, Tricia	Admin. Clk-Steno	Security