



Magicians with metal



Sierra Pacific Power
Fab Shop Makes
Just About Anything

Story & Photos
Page 3

Scott Tittensor, Sierra Pacific Power welder

Bankruptcy trial begins

Pacific Gas and Electric Co. and the California Public Utilities Commission began an historic confrontation in bankruptcy court last month over the future of California's electric industry.

On the surface the trial is about restoring the utility's financial health in the wake of PG&E's bankruptcy. But in choosing between reorganization plans put forward by PG&E and the CPUC, Judge Dennis Montali is also deciding whether to expand federal regulatory authority over PG&E's operations at the expense of the state's traditional regulatory authority.

PG&E wants to finance the re-

payment of its debts by spinning off power plants, gas pipelines and its electricity transmission system and borrow against the transferred assets to pay off the utility's debt.

The CPUC wants PG&E to remain an integrated utility—with its generation, transmission and distribution operations intact under state regulation. The CPUC plan would have the utility pay back its creditors by issuing \$8.3 billion in debt securities and \$500 million in stock.

Ultimately it is up to Judge Montali to "confirm" one of the competing plans, although further litigation is

Page 4 ▶

PG&E Bargaining

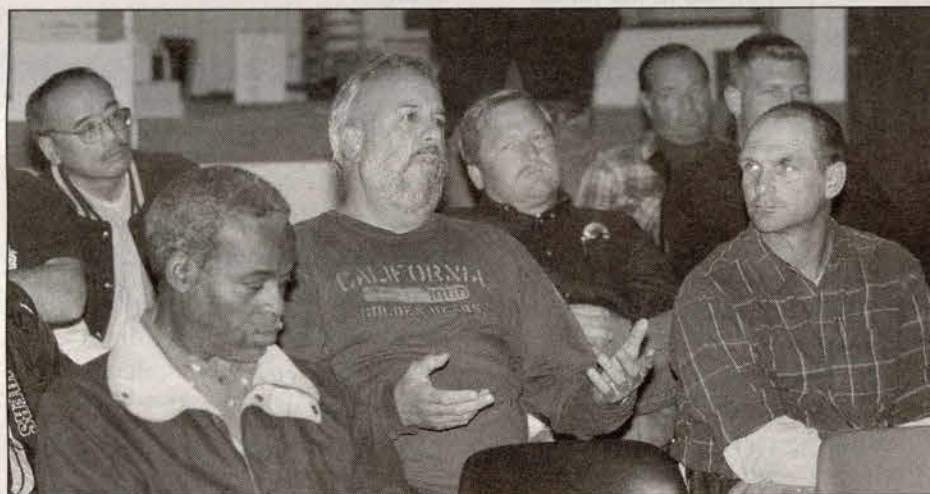
Members debate merits of table agreement

Members of the Local 1245 Bargaining Committee at Pacific Gas & Electric fanned out to unit meetings across northern California last month to explain the recently-negotiated Table Agreement.

Ratification ballots were due back by 10 a.m. on Dec. 10, a few days after this issue of Utility Reporter went to press. Results of the balloting will be available Dec. 10 by calling the union hall at 925-933-6060. Ballot results will also be published on the IBEW website at www.ibew1245.com.

Business Manager Perry Zimmerman and members of his staff joined Bargaining Committee members on the stump, offering background on some of the more controversial aspects of the agreement.

Concerns expressed by members included the proposed co-payment



Gas Crew Foreman Ken Hartje offers his view of the Table Agreement during the November San Francisco Unit Meeting.

on medical premiums, the timing of the negotiated pension increases, the size of the general wage increases, and the narrow scope of the company's offer on high cost-of-living areas.

If the package is approved by a majority vote, the new agreement will take effect Jan. 1, 2003. If a majority rejects the package, the union and company will return to the table.

Sierra Power talks focus on inequities

Wage inequities and benefit issues were the focus of talks between Local 1245 and Sierra Pacific Power in November, with the parties meeting on Nov. 19, 22, 25 and 27.

The company's financial condition is a factor in the talks, according to Local 1245 Business Rep. Randy Osborn, who said the company had a lot of credit coming due in 2003.

Management has a relatively inexperienced bargaining committee, which has slowed the pace of negotiations, according to Osborn.

The current labor agreement at Sierra Pacific Power expires at the end of the year.

Feature



This Job's
for The Birds

Pacific Gas & Electric
To Ratify or Not to Ratify 6

Inside

Your Union
Don't Underestimate the Members 2

Sierra Pacific Power
Magicians with Metal 5

Political Action

Celebrating Prop D's Defeat 8-9

Safety Matters

DOT Rule Change 13

Unit Schedule

Unit Meetings 2003 18-19

EVENTS

DECEMBER 10

Deadline for Returning Ballots in the PG&E Ratification Vote. Ballots received after 10 a.m. will not be counted.

FEBRUARY 1-2

Advisory Council
Concord, CA

APPOINTMENTS

PACIFIC GAS AND ELECTRIC

Ballot Committee

Leroy Foster
Rick Davis
Vida Anderson
Sal Lozano
Cesar Custodio
Steve Smith
Shawn Rocha
Steve Pettigrew
Larry Gibson
Ken Amaral

DUKE ENERGY

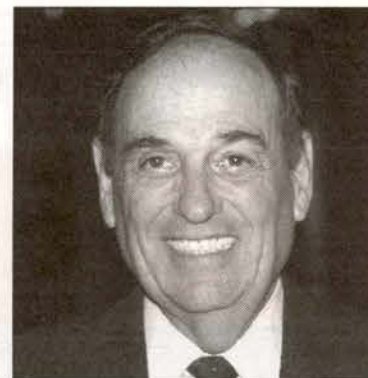
Negotiating Committee

Galend Hecht
Hazel Bailey
Mark Scherer
Dennis Hill
Doug Paslay
Elton R. Bryant

YOUR UNION

Don't underestimate the members

By Perry Zimmerman, Business Manager



Late last month, a member sent me an e-mail, wondering why so few Local 1245 members participate in the union. He himself had been very active in Local 1245 in the 1960s, dropped out of sight for a few decades, and then recently gotten very active again as he approached retirement. Like many of the questions our members ask, it was a very good question. I answered him, but I've been thinking about his question and my answer for a few weeks.

There are two parts to my answer. First, I believe that all social movements are led by a dedicated few. Second, I am not sure that it is fair to say that only a few Local 1245 members participate in the union.

When Local 1245 first organized the PG&E workforce in the 1940s

and early 1950s, it was not a mass movement. A relatively small number of dedicated activists put their working lives on the line and methodically persuaded their fellow workers that union representation was in their best interest.

This dynamic—a dedicated few willing to sacrifice and work hard for the abstract goal of unionism as well as the concrete goals of better wages and working conditions—is exactly what you will see throughout history. Movements that advocate and achieve change are almost invariably led by a small core of believers who mobilize many others to brief periods of activism to achieve the change.

If we were to look around and see only a few hundred dedicated activists visibly supporting Local 1245, it would be in keeping with this historical pattern.

When I look at Local 1245, however, I don't see just a few hundred dedicated activists. I see thousands of union members who in one way or another lend their voice to their union, and who by their participation exercise some control over their work lives.

Let's start with the shop stewards. Our ratio of members per shop steward is well under 20:1, much better than in many other organized shops. Our shop stewards do not get special treatment because they are shop stewards; if anything, they jeopardize their standing at work because of their willingness to take the company on, and they jeopardize their friendships at work because of their willingness to say "no" when "no" is the right answer. They do the heavy lifting of union representation, and they freely give up their time, including weekends, for training and for their shop steward duties.

Then look at the negotiating committees. Every year, hundreds of Local 1245 members serve as rank and file members of negotiating committees. They serve as the liaison between Local 1245's negotiators and our members, providing the background and knowledge of the workforce and working conditions that our negotiators need to do their job. They analyze proposals, cost proposals, and make tough decisions. This is another thankless job, but one that highlights truly dedicated union members participating in their union.

Don't overlook the grievance committees. At every one of our major employers, Local 1245 members are key players in the investigation of grievances. Our business representatives and administrative staff are involved, to be sure, in decisions about grievances, but the nuts-and-bolts work of gathering the facts needed to analyze and decide the grievances often falls to rank and file members.

And then there are the unit meetings. Each month, hundreds, sometimes thousands, of Local 1245 members attend their unit meeting, chaired and recorded by rank and file members.

Don't forget the service awards dinners—attended by hundreds of members each year. And Local 1245's retirement planning seminars, where several thousand union members will turn up after work or on the weekend to listen to learn about retirement issues.

The list goes on—the members who are elected and serve on the Executive Board, the members who are elected and serve on the Advisory Council, the members who volunteer and are appointed to partici-



WJCA
WESTERN LABOR COMMUNICATIONS ASSOCIATION

Utility Reporter

December 2002
Vol. 51 No. 12
Circulation: 23,400



Business Manager & Executive Editor
Perry Zimmerman

Communications Director & Managing Editor
Eric Wolfe

President
E. L. "Ed" Mallory

Executive Board
Michael J. Davis
Chris Habecker
Dave Scott
Anna Bayless-Martinez
Kathy F. Tindall
John Mendoza

Treasurer
Ron Moon

Published monthly at 3063 Citrus Circle, Walnut Creek, California 94598. Official publication of Local Union 1245, International Brotherhood of Electrical Workers, AFL-CIO, P.O. Box 4790, Walnut Creek, CA 94596.

Periodical postage paid at Walnut Creek and at additional mailing offices. USPS No. 654640, ISSN No. 0190-4965.

POSTMASTER: Please send Form 3579, Change of Address, and all correspondence to Utility Reporter, P.O. Box 4790, Walnut Creek, CA 94596.

Single copies \$1. Subscription by arrangement. Have you moved recently? Please send complete new address and your Social Security Number (by U.S. Mail) to: "Address Change", IBEW Local 1245, P.O. Box 4790, Walnut Creek, CA 94596. Our phone number is (925) 933-6060.

www.IBEW1245.com

Page 17 ►

Metal Magicians

Sierra Pacific Power Co.

They build substation structures. They maintain compressors at the compressed natural gas station. They make manifolds and meter sets.

Think of them as magicians with metal and you'll be pretty close to the mark.

"Anything that takes metal, we do it," says Bill Bour, Working Foreman at Sierra Pacific Power's fabrication shop in Reno. "We take anything they bring in through the door. We don't turn anything away."

The fabrication crew provides support to electric, substation, SCAT, the service center, gas dispatch, emergency response for dig-ins, computer rooms, and power plants.

"We work from 20 feet in the ground to 200 feet in the air," says certified Fabricator/Welder Denny Tittensor. "We do whatever is necessary to keep our lights on and the gas running."

Recently the shop fabricated 88,000 pounds of steel for a new substation. But that's not unusual, says Fabricator-Welder Bruce Taylor.

"We've been averaging five substations a year."

Taylor says the fab shop has worked hard to help the engineers understand the shop's capabilities so that work gets performed in-house.

"They understand we're competitive in what we can do. It's handy for them to be able to call us with a change order."

A little magic, after all, can be a mighty valuable thing.



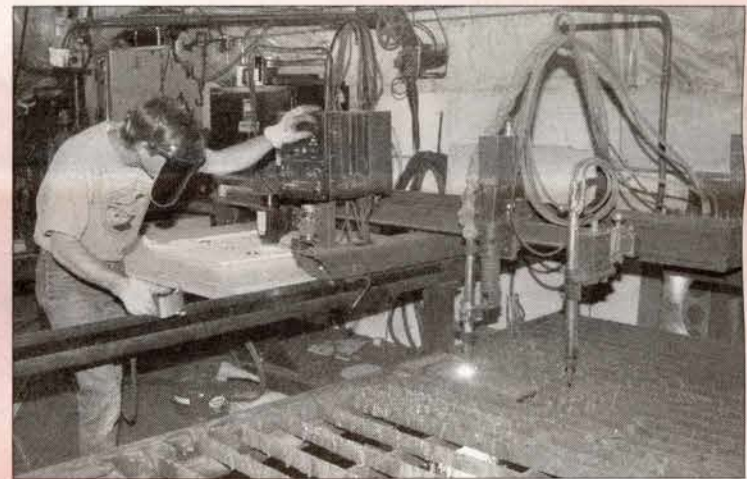
John Jackson (left) and Dan Haskill build a stairway for going over gas pipes at Tracy Power Plant.



Dean Janes, Certified Fabricator, makes templates for footings for substation.



Dan Haskill, Fabricator



Rex Mayo, Certified Fabricator Welder, plasma burns parts out for a job in the Fab Shop.



Dale Cudworta, tool repair, machines shaft for crimpers.



Back row: John Jackson, Fabricator; Dan Haskill, Fabricator; Dean Janes, Certified Fabricator; Dale Cudworta, Tool Repair; Scott Tittensor, Welder; Ralph Abell, Welder. Front row: Rex Mayo, Denny Tittensor, Bruce Taylor, Bill Bour.

Story & Photos
By Eric Wolfe

Bankruptcy trial begins

► From Page 1

possible no matter which way Montali rules.

On Nov. 18, the opening day of the trial, PG&E characterized the CPUC plan as “baloney,” questioning whether the plan could restore the company to creditworthiness.

PG&E received a boost for its position two days later when a report by Standard & Poor’s said the CPUC plan would leave the utility with junk-level credit status. PG&E said the report confirmed its belief that the CPUC plan would leave the utility unable to cost-effectively resume purchasing power for its customers.

However, Montali turned down a motion by PG&E that he rule the CPUC plan unconfirmable. While not ruling on whether the plan is confirmable, Montali said the CPUC had carried its burden to establish that its plan is financially feasible.

Another obstacle faced by the CPUC plan is a decision by the 9th US Circuit Court of Appeals in September that said the CPUC’s plan for rescuing southern California Edison in 2001 appeared to violate state laws that control electric rates and the way they are adopted. The plan shifted more than \$3 billion in Edison debt to ratepayers and did so without public hearings. The same issue appears to cloud the CPUC’s plan for reorganizing PG&E.

The 9th Circuit invited the California Supreme Court to make the final call on whether state laws were violated, and in late November the state high court agreed to review the issue.

Requests urging the justices to take the case and uphold the CPUC-Edison pact were filed by the Governor’s Office, the state Chamber of Commerce and other business organizations and the Los Angeles County Federation of Labor. They called the deal a vital step in stabilizing the state energy infrastructure.

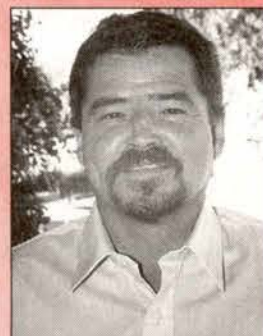
The CPUC is expected to submit its opening brief in the case prior to Christmas.



Ron Moon, left, is sworn in by President Ed Mallory as the new Local 1245 Treasurer. Moon replaces Ed Dwyer.



Outgoing treasurer Ed Dwyer has been hired as Business Rep. in the Bakersfield area, replacing Mike Grill.

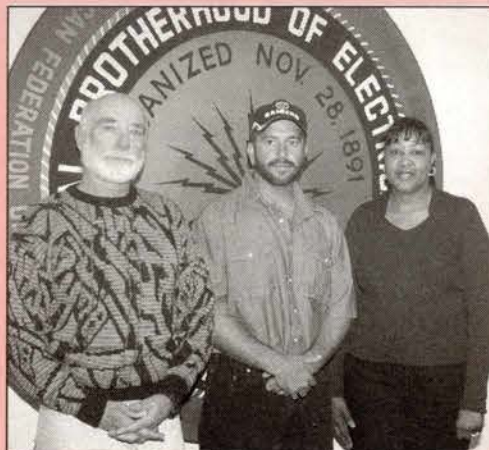


Business Rep. Mike Grill has been named to assume much of the Fresno-area assignment formerly held by the late Jim Lynn.

In the Local 1245 Spotlight



Elizabeth Rounds, left, is sworn in by President Ed Mallory at the November Advisory Council meeting in Rohnert Park. Rounds replaces Linda Jurado as the Clerical-at-Large representative on the Council.



Local 1245 Trustees are, from left: Leroy Foster, Steve Pastor and Norma Ricker.

For the birds

By Eric Wolfe

When a heron contacts a power line and burns it down maybe it's time to think about undergrounding the system. That's what the Sacramento Municipal Utility District did at the Cosumnes River Preserve and Bird Sanctuary. SMUD no doubt had the service reliability of its customers uppermost in mind. But spend a few minutes with Foreman Dennis Ludwig— whose crew pulled and terminated wire on the project— and you get the distinct impression that he's doing it for the birds.

Ludwig, who retired shortly after these photos were taken last June, is the sort of bird enthusiast who thinks nothing of traveling out to Kawaii to commune with the birds of Hawaii, or down to Texas just on the hope of spotting a Ferruginous Pygmy Owl.

But he enjoys the local talent as well, easily identifying Cosumnes avian residents like the tree swallow, wood duck, blue heron and scrub jay.

"This job is right up my alley," Ludwig acknowledges.

"It's wet and wild out here. Me and the wife come out here and watch birds at migratory time," once spotting "thousands of sand hill cranes."

As Ludwig begins to enjoy the good life after retirement, he won't be forgetting the organizations that helped make it possible: Local 1245 and SMUD.

He calls SMUD "a good organization." The union, he says, "kept SMUD honest."

"The union kept our wages up. The union has kept us apace. I think we're way above some utilities."

Ludwig has seen a lot of change during his years at SMUD, and thinks the District is positioning itself well for the future with its current crop of apprentices.

"We're getting some pretty good quality men—like the apprentice I've got on the crew right now. The apprenticeship program is picking out the more skilled people, with natural ability to climb the poles."

After more than 30 years on the job, Ludwig seems ready to step aside and make room for others. He knows there are plenty of birds out there waiting for him.

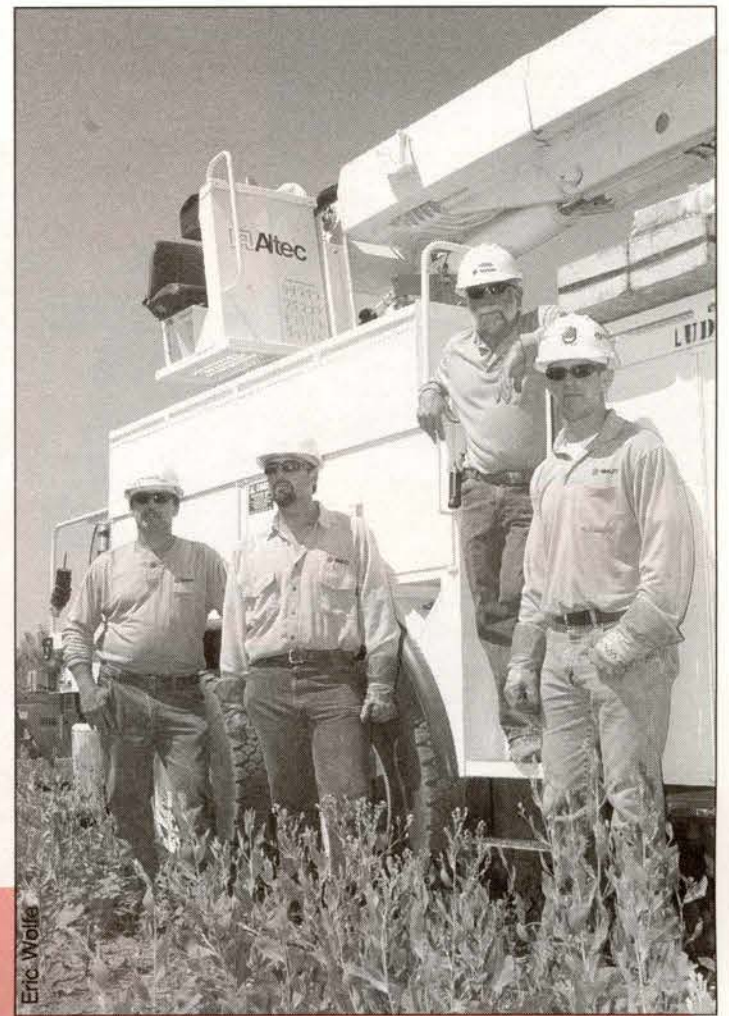
Birding isn't a new passion for Ludwig. He kept chickens as a kid. Then, working a job in the mid-1970s, he came across a nest of American kestrels in a pole hole.

"I raised them in the city and let them go in the city," he recalls. "I didn't do a good job but they flew away."

Now Ludwig is flying away, too, and we wish him good birding.



Eric Wolfe



Eric Wolfe

Helping underground the electric service at Cosumnes River Preserve outside Sacramento are, above from left: Mike Fisher, Lineman; Nathan Prince, Pre-Apprentice; Dennis Ludwig, Foreman; and Chris Goehring, Hot Apprentice.

Left: Chris Goehring (left) and Mike Fisher. The new underground feed is going up to feed the pole-bolted transformer.

SACRAMENTO MUNICIPAL UTILITY DISTRICT

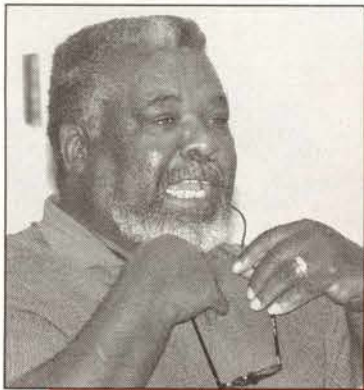
Below: Dennis Ludwig plans to keep returning to the Cosumnes River Preserve and Bird Sanctuary, not as a lineman but as a bird watcher.



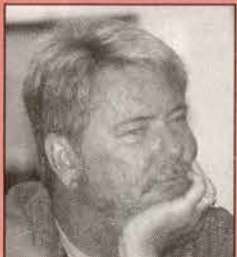
American kestrel



Eric Wolfe

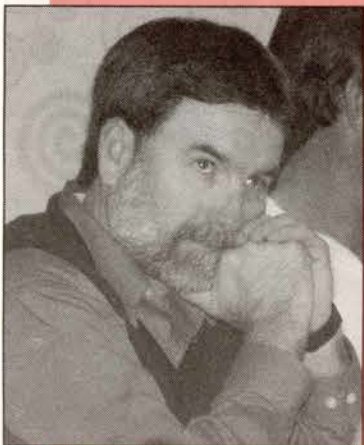


Cliff Jackson



Steve Smith

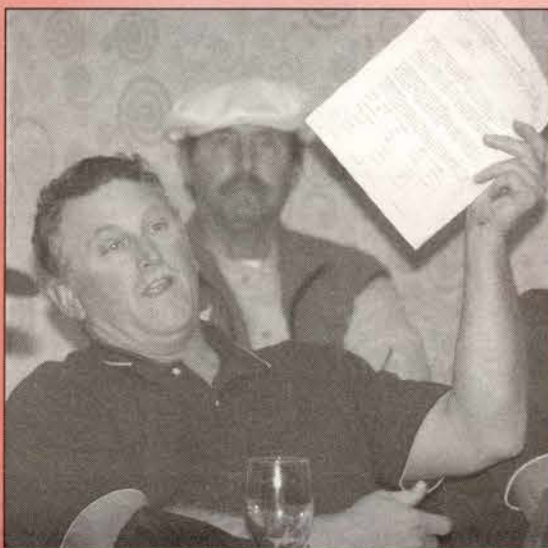
To ratify or not to ratify: Members discuss Table Agreement during lively rank & file summit



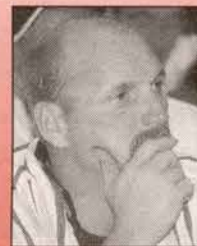
Dan Mayo



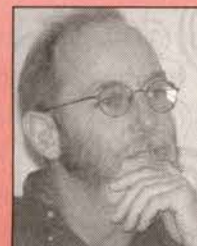
Ione Snyder



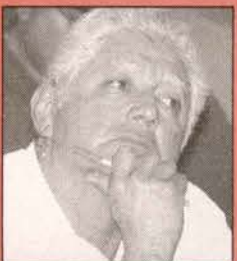
Jim Farmer



Jeff Campodonico



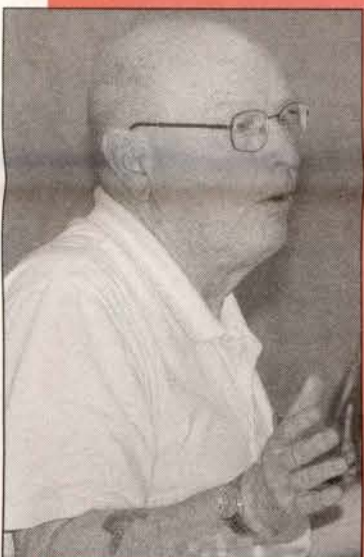
Will Bouzek



Tom Garcia



Sonny Hollesen



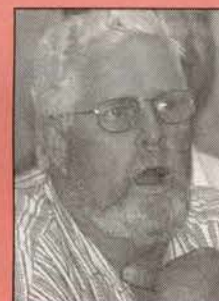
Local 1245 President
Ed Mallory



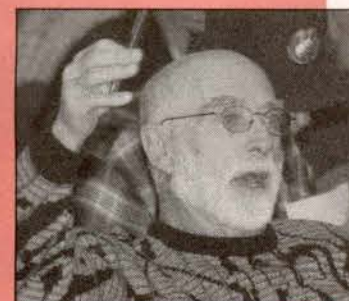
Cecella De La Torre



Jack Hill, Retiree Representative on Bargaining
Committee



Ron Moon



Leroy Foster



Business Manager Perry Zimmerman discusses the critical importance of voting on the Table Agreement.

Business Manager Zimmerman noted that the union had gained \$868 million in improvements in the Table Agreement, while giving up \$218 million in concessions, leaving union members with a net gain of \$650 million.

The Table Agreement with Pacific Gas & Electric found supporters and detractors during a lively gathering of rank and file members in Concord on Nov. 8, about a week before ratification ballots went into the mail.

Business Manager Perry Zimmerman urged members to study the agreement and make an informed decision when casting their votes.

Some members were bluntly critical of the package negotiated by the Bargaining Committee, while others jumped to the Committee's defense.

Members questioned whether the union gained all that could be gained in the area of pension, wages, and relief for those in high cost-of-living locations. Committee members described in detail the last hours of bargaining, when the final package was crafted, and why the union believed it got every dollar the company was willing to give.

"We all went into this thing with our expectations," said Bargaining

Committee member Woody Woods. "Were all of our expectations fulfilled? Probably not," he acknowledged. "But we were trying to get everyone a slice of the pie without selling anyone down the river."

Among those members saluting the committee for their effort was Billy Warmbrodt.

"We all have our dreams and hopes—I think you did the best you could. These are bad economic times," Warmbrodt said.

Business Manager Zimmerman noted that the union had gained \$868 million in improvements in the Table Agreement, while giving up \$218 million in concessions, leaving union members with a net gain of \$650 million.

Ballots were mailed to members in mid-November and were to be tallied on Dec. 10.



Bargaining Committee member Jim Grady, middle, flanked by Bargaining Committee members Mark Newman, left, and Woody Woods.

"Negotiations is like you trying to sell a car. Someone comes in and tries to lowball the price of the car. You negotiate as far as you can, then finally you say, 'OK, you can have the car for that price, but I'm taking the stereo out.' Negotiations goes back and forth like that."

Jim Grady
Negotiating Committee



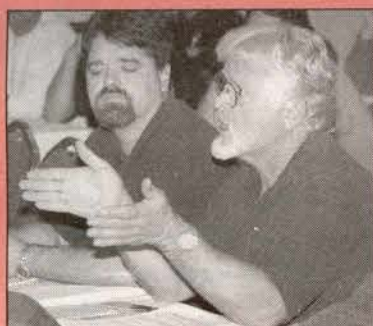
Steve Segale



Ken Amaral



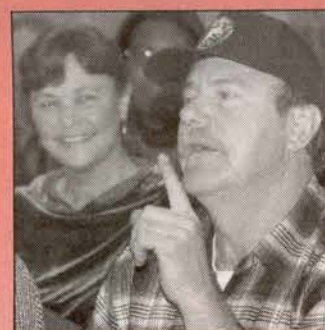
Joe Osterlund



Dave Cannon



Lynn Moon



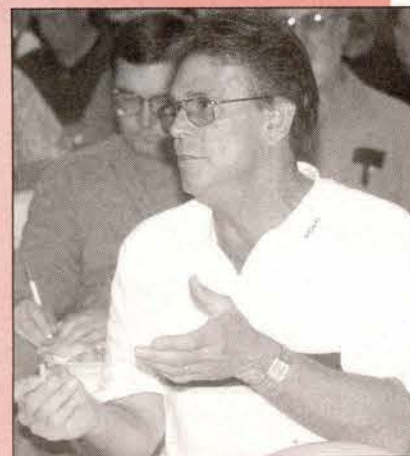
Mike Hamm makes a point, Peggy Kallher listens.



Mary Wise (left) and Brenda Fisher

"Nine months in a hotel room is no fun. [Negotiations] is a hard job. There's a lot of personal sacrifice...Make sure people get their ballots. Make sure they return their ballots. There are millions of dollars of improvements there."

Gary Weaver



Gary Weaver

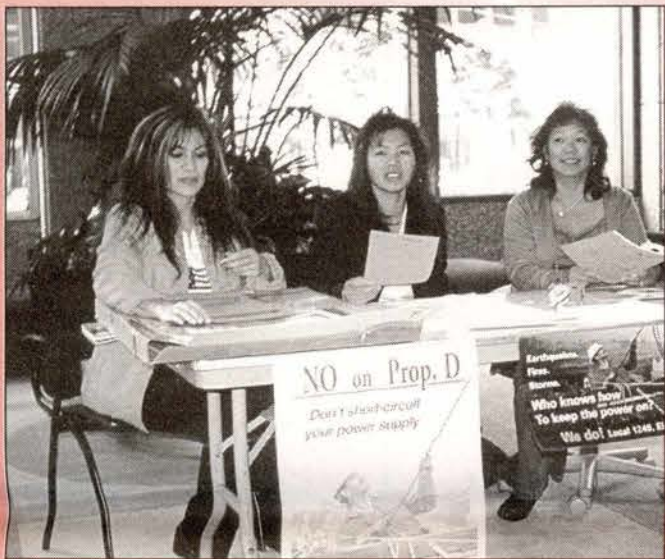
Sweet Victory!

More scenes from the winning campaign against Proposition D in San Francisco

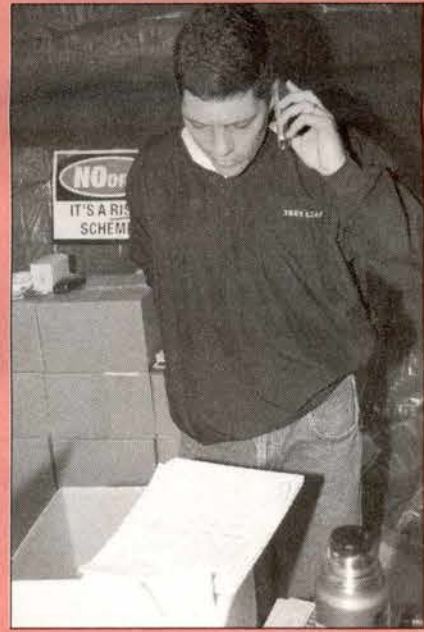
The final tally of ballots showed Proposition D losing 46.3% to 53.7%. The proposition would have paved the way for municipalization of PG&E assets in San Francisco. It provoked a tremendous rank and file effort by Local 1245 members concerned about job displacements



The Local 1245 made the Beach Chalet restaurant on San Francisco's Great Highway the unofficial headquarters for its campaign against Prop. D.



Norma Vella, Cindy Jew-Szeto and Delores Harrington staff a Prop. D information table at PG&E's Beale St. headquarters.



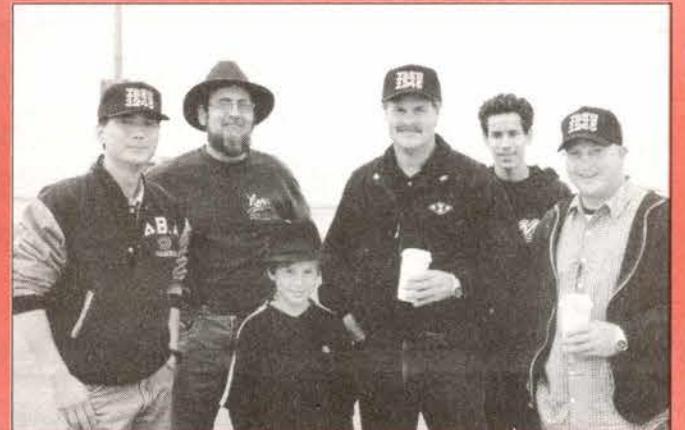
Business Rep. Hunter Stern makes election day calls to get out the vote.



Joining the door-to-door campaign against Prop. D are, from left: Lynell Glover, Fresno PG&E meter reader; Jackie Lane; and Richard Lane, Local 1245 member at Turlock Irrigation District.



General Construction members who came in from the Placerville area to assist with door-to-door leafletting are, from left: Bob Cabaniss, Tom Ojeda and Greg Sisemore.



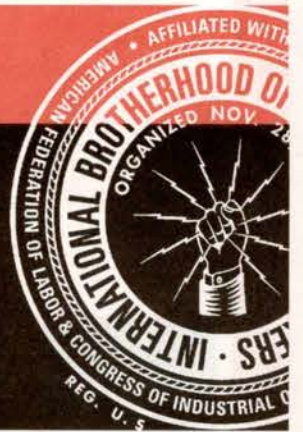
Wyman Ko, Business Rep. Landis Marttila, Justice Marttila, Jeff Joy, Max Marttila, and Dave Garcia.

James Hampton
 Jason Alderman
 Jay Fry
 Jay Luo
 Jazman Stroud
 Jeffery Joy
 Jennifer Rawlings
 Jennifer Yamaguchi
 Jenny Flores
 Jerry Takeuchi
 Jill Stern
 Jim Bryan
 Jim McCauley
 Jonathan Lowe
 Jose Lopez
 Josh Marttila
 Joshua Lonner
 Juan Miller
 Judy Kong
 Karalee Calhoun
 Karen Clapsadle
 Kevin Carroll
 Kurt Linford
 Kyoko Mitchell
 Bernard Smallwood
 Beth Angeles
 Bill Brill
 Bill Robotka
 Brian Kong
 Brian Leary
 Cameron Rowland
 Carey Madill
 Carol Lampson
 Cindy Whitchurch
 CJ Gibson
 Ed Broussard Sr
 Edward F Otten
 Terri Guza
 Tina Duncan
 Tina Otten
 Tom Gaurino
 Tom Smith
 Elanor Dela Cruz
 Emanuel Dela Cruz
 Eric Christinson
 Eric Wolfe
 Erwin Bonilla
 Ezra Garrett

Frances Knowles
 Gene Dela Cruz
 Gianni Ni
 Gita Mondal
 Colleen Morris
 Dan Flores
 Darice Lowe
 Dave Rehn
 Al Fortier
 Al Harrington
 Al Zazzarone
 Amy Wojak
 Andrew Otten
 Karen Tomcala
 Kasia Smolen
 Katni Berman
 Anthony Estrada Jr
 Benjamin Harris
 Bernard Lam
 David Garcia
 David Mackey
 David Rubin
 David Stevenson
 Deanna Meredith
 Bill Zemke
 Bob Harris
 Bob Quinn
 Bob Smith
 Brian Swanson
 Debbie Mazzanti
 Debbie Rose
 Dewey Seeto
 Don Amuzie
 Durla Alford
 Duton Lee
 Ed Abriam
 Grace Henry
 Holly Meyer Alvarado
 Holly Welles
 Hunter Stern
 Ivonne Ni
 Jack Lum
 Jackie Lane
 Landis Marttila
 Larry De La Torre
 Larry Goldzland
 Larry Magee
 Linda Chinn

The Power of

Unity



Proposition D was defeated in large part by the massive grassroots campaign conducted by Local 1245. Listed here are the members, spouses, children, managers, ESC members, and Local 1245 members from other companies who proved the power of unity by giving time to the neighborhood canvassing that ultimately was the undoing of D.

Linda Wolfe
 Lisa Kinimaka
 Logan Mondal
 Lou Troga
 Lucy Burdoin
 Lynell Glover
 Lynn Forette
 Lynn Magnet
 Marilyn Lawson
 Mark Hendmuster
 Mark Pisarcik
 Mark Randazzo
 Marlayne Morgan
 Mary Tawasha
 Maryann Dennehy
 Matt Lonner
 Matt Moshiri
 Matt Vukurovich
 Max Marttila
 Michelle Lee
 Mike Emerson
 Mitch Schroth
 Neil Wong
 Tracey Hendricksin
 Travis Kyoto
 Trish Lynch

Valarie Lawson
 Vince Brown
 Vince Jones
 Will Durinick
 Will Hardee
 William Ekberg
 Wyman Ko
 Yvonne Cardinale
 Zibby Madill
 OJ Leonard
 Olivia Terry
 Pam McCoy
 Pam Miller Lewis
 Paul Holton
 Perry Zimmerman
 Pete Dominguez
 Pete Griffith
 Peter Hartman
 Petra Rothenberg
 Quincy Dong
 Ray Dennehy
 Ray Shepherd
 Richard Lane
 Rick McAllister
 Robert Nagata
 Rod Harrington

Ruth Bailey
 Ryan Whitchurch
 Sam Sabagaoit
 Scott Ford
 Shannon Walden
 Sharonic Tatai
 Sharrie Durinick
 Larry Simi
 Laura Ehiu
 Leona Carter
 Lester Olmstead Rose
 Sonia Amato
 Stan Kataoka
 Stephanie Angeles
 Stephanie Isaacson
 Steve Machado
 Steve Mayfield
 Steve McCarty
 Susan Fandel
 Susie Lee
 Suzanne Panphile Ford
 Sven Thesen Sxto
 Sylvia Gardner
 Teresa Alvarado
 Teresita Dela Cruz
 Tony Abdulla
 Tony Ni



Season's Greetings



Lacy Allen
Administrative Associate



Tonya Alston-Maxwell
Office Manager



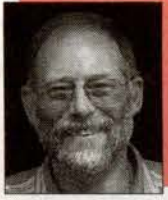
Ken Ball
Senior Business Representative



Bill Brill
Business Representative



Shirley Boyle
Administrative Associate



Vern Brown
Business Representative



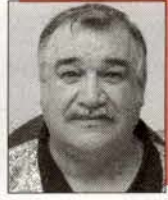
Virginia Browne
Administrative Associate



Phil Carter
Business Representative



Ed Caruso
Business Representative



Bob Choate
Assistant Business Manager



LOCAL 1245 OFFICE
STANDING, FROM LEFT: JOHN M. BAYLESS, EXECUTIVE BOARD; KATHY SCOTT, EXECUTIVE BOARD; RON M. MIKE DAVIS, VICE PRESIDENT; PERI FINANCIAL SECRETARY; ED MALL RECORDING



Rich Cowart
Business Representative



Tom Dalzell
Senior Assistant Business Manager



Ed Dwyer
Business Representative



Arlene Edwards
Business Representative



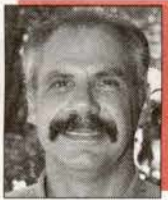
Jennifer Edwards
Administrative Associate



Dorothy Fortier
Assistant Business Manager



Luz Garcia
Building Maintenance



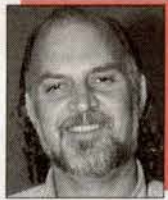
Sam Glero
Business Representative



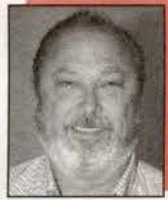
Wayne Greer
Business Representative



Mike Grill
Business Representative



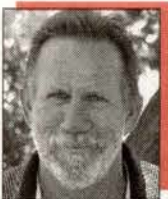
Mike Haentjens
Business Representative



Gary Hughes
Business Representative



Angela Jacobson
Administrative Associate



Jeff Johnstone
Business Representative



Nancy Kendrick
Administrative Associate



Gina Khalil
Administrative Associate



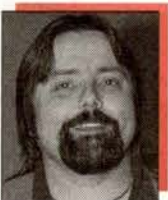
Karen Kiley
Administrative Assistant



Ann Kools
Administrative Assistant



Austin Lea
Administrative Associate



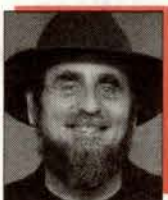
Dan Lockwood
Business Representative



Bob Martin
Business Representative



Lita Martin
Administrative Assistant



Landis Marttila
Business Representative



Corrine Mascarenas
Administrative Associate





LOCAL 1245 OFFICERS & EXECUTIVE BOARD

STANDING, FROM LEFT: JOHN MENDOZA, EXECUTIVE BOARD; ANNA BAYLESS, EXECUTIVE BOARD; KATHY TINDALL, EXECUTIVE BOARD; DAVE SCOTT, EXECUTIVE BOARD; RON MOON, TREASURER. SEATED, FROM LEFT: MIKE DAVIS, VICE PRESIDENT; PERRY ZIMMERMAN, BUSINESS MANAGER/ FINANCIAL SECRETARY; ED MALLORY, PRESIDENT; CHRIS HABECKER, RECORDING SECRETARY.

from IBEW Local 1245



OFFICERS & EXECUTIVE BOARD
 RAY ZIMMERMAN, EXECUTIVE BOARD; ANNA
 TINDALL, EXECUTIVE BOARD; DAVE
 HARRISON, TREASURER. SEATED, FROM LEFT:
 PERRY ZIMMERMAN, BUSINESS MANAGER/
 SECRETARY; CHRIS HABECKER,
 SECRETARY.



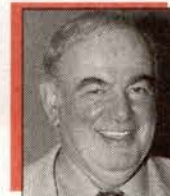
Debbie Mazzanti
Business
Representative



Jim McCauley
Assistant Business
Manager



Liz McInnis
Administrative
Assistant



Manny Mederos
Assistant Business
Manager



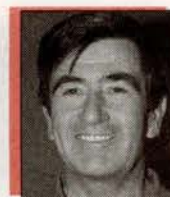
Joy Mohr
Accounting
Associate



Muriel Moore
Administrative
Associate



Lynne Morel
Business
Representative



Darryl Norris
Business
Representative



Junior Ornelas
Business
Representative



Randy Osborn
Business
Representative



Jack Osburn
Business
Representative



Larry Pierce
Business
Representative



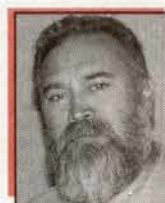
Peggy Proschold
Administrative
Associate



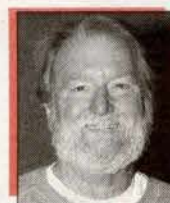
Fran Richardson
Business Manager's
Executive Secretary



Roy Runnings
Business
Representative



Santiago Salazar
Business
Representative



Frank Saxsenmeier
Senior Business
Representative



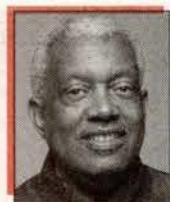
Dennis Seyfer
Assistant Business
Manager



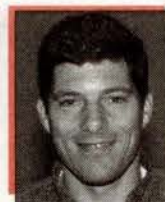
Bernard Smallwood
Business
Representative



Roger Stalcup
Assistant Business
Manager



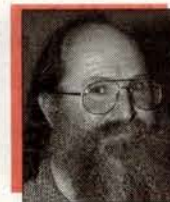
Veodis Stamps
Business
Representative



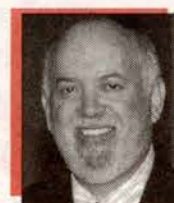
Hunter Stern
Business
Representative



Kit Stice
Business
Representative



Howard Stiefer
Assistant Business
Manager



Sam Tamimi
Assistant Business
Manager



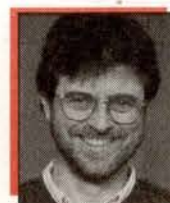
Ray Thomas
Business
Representative



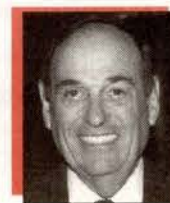
Gail Varner
Senior Office
Associate



Lula Washington
Business
Representative



Eric Wolfe
Communications
Director



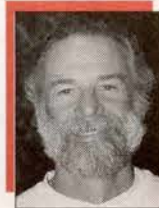
Perry Zimmerman
Business Manager



Happy Holidays!



ELSIE ABBEY
U.S. Bureau of
Reclamation Region 2



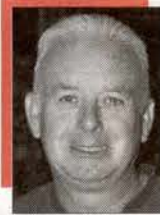
TERRY ANDREUCCI
Drum PG&E, Plumas
Sierra REC, City of
Roseville



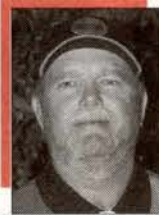
RICHARD BENTLER
De Sabla PG&E



PEGGY DANIEL
PLO, PG&E, C.P.
Nat'l: Needles Div. &
Henderson District



LARRY DARBY
General Construction
PG&E



GROVER DAY
Stockton PG&E,
City of Lodi



JOHN FELTS
Pacific Gas
Transmission Co.



JIM FINDLEY
North Bay PG&E,
City of Healdsburg



LEROY FOSTER
East Bay & Materials
PG&E, Foster Wheeler



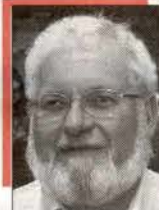
WILLIAM GILLIAM
Sacramento Regional
Transit District



RONALD McDOWELL
Tree Trimmer
Companies



DAVE MORRISON
Citizens
Communications



STUART NEBLETT
Shasta PG&E, Redding,
Lassen MUD, Shasta
Dam Area PUD, Bella
Vista Water District



DAN PARMENTER
Sacramento PG&E,
Calibration & Testing



JEFF PEDERSEN
Outside Construction



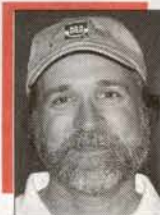
BOB QUINN
San Francisco &
PG&E General Office



LARRY RODRIGUEZ
AC Transit, East Bay
Municipalities



ELIZABETH ROUNDS
Clerical at Large
PG&E
(except GO clerical)



MIKE STOUT
Irrigation Districts



MARK TAYLOR
Coast Valleys



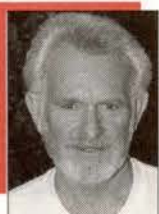
LEE THOMAS JR.
Humboldt PG&E



ART TORRES
Sacramento Municipal
Utility District,
GEO/Coldwater Creek
Operating Coop



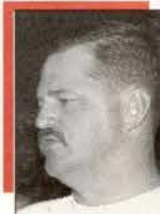
BOB VIEIRA
Sierra Pacific Power,
WP Natural Gas-S.
Lake Tahoe, CP
National-Elko
Telephone, Truckee
Donner PUD, Mt.
Wheeler Power, Wells
REA, City of Fallon



BILL WALLACE
City of Santa Clara,
San Jose Div. PG&E



MARY WISE
San Francisco
General Office Clerical



Todd Wooten
Colgate PG&E, City of
Gridley, Yuba County
Water Agency



VACANT
San Joaquin PG&E,
CAPCO,
Chow. Water District

Local 1245 Advisory Council



DOT rules change

By Richard Lane

Effective Sept. 30, 2002, the federal Department of Transportation enacted sweeping changes to laws affecting Class A license carriers.

Under the administration of the federal Motor Carriers Safety Administration, rules governing the enforcement of traffic violations, the adjudication of DUI statutes and the definition of Commercial Motor Vehicle versus non-CMV violations was changed.

A summary in the Federal Register revealed that the intent of Congress's change to the federal laws was to make Class A license holders responsible for their driving habits in both their private and professional vehicles. Consequently, CMV drivers face stricter enforcement beyond that of non-CMV drivers.

For example, CMV drivers subject to the restriction of .04 blood alcohol level while driving a CMV are also subject to the same restric-

tion in their private vehicle. Speeding more than 15 miles per hour over the limit for a second conviction in a CMV or non-CMV within 3 years could result in a 60-day suspension.

All license suspensions due to violations must be determined by either administrative hearing or by an administrative tribunal.

Citing a steady increase of "large truck" related crashes on the nation's highways as the need for regulation, the DOT estimates that if 700 truck-related crashes can be avoided annually, \$404 million and untold deaths and injuries can be averted. The withholding of Federal highway aid funds is the compliance mechanism being used to prompt adherence by the states.

If you are interested in seeing these changes for yourself, you can reference to 49 CFR Parts 350, 383, 384 and 390.

Be safe, friends.

Richard Lane is a member of the Local 1245 Safety Committee.

Ask 'Safety Tailboard'

Send your safety question to the IBEW 1245 "Safety Tailboard."

Safety Tailboard is an open forum for discussion and learning about safety issues. Submit your question, along with your name and phone number, to the address below. If your question is published you will receive a free hat and mug. Best question of the year receives an IBEW shirt.

Safety Tailboard, c/o Jim McCauley, IBEW 1245, PO Box 4790
Walnut Creek, CA 94596

Tim Ruiz, 43

Lineman Timothy Ruiz, 43, died Nov. 5 from jobsite injuries while working for Henkels & McCoy in the San Diego area.

Brother Ruiz was initiated into IBEW in 1978, becoming a journeyman lineman in 1988.

He is survived by his wife, Tawnya Donn Parker, sons Joshua Parker and William Jones, daughter Rachel Jones, and granddaughter Mahala Jones.

Local 1245 extends its condolences to the family, friends and co-workers of Brother Tim Ruiz.



By the Local 1245
Safety Committee

Protect family as well as self

While on the job we are aware of hazards, we incorporate safety procedures into our routine, we watch out for our co-workers.

But what have we done to protect our families in case of a serious illness or accident leading to our death?

It's important to know your

employer's procedures in case of an emergency. And it's equally important to know your employer's policy on emergency retirement in the advent of your possible death.

Remember: be safe. And protect your family as well as yourself.

Art Torres

Seasonal check-up

We're heading into a change of seasons—always a good time to take a few extra precautions to assure the safe operation of your vehicle.

Take the time to check your windshield wiper blades and arms. Tire tread should be checked for proper depth. If you do not know the proper depth, visit a reputable shop.

RainX and other over-the-counter products can help keep windows clear.

Take extra time to warm up your vehicle. Fogged and iced-up windows are very hazardous. And that little twelve-inch hole you cleared with hour hand is not enough to for proper viewing and safe driving.

If you need to, lay newspapers on the windshield when frost is in the forecast.

And leave plenty of time to reach your destination so that you aren't tempted to speed.

Keith Hopp



"I was patting myself on the back for winning the safety award at work."

Current members of the Local 1245 Safety Committee: Stoney Burk, Alameda Power & Telecomm.; Keith Hopp, Pacific Gas & Electric; Ralph Muraca, City of Santa Clara; Al White, Pacific Gas & Electric; David Vipond, Citizens Communications; Rich Lane, Turlock Irrigation District; Gil Suarez, Davey Tree; Art Torres, Sacramento Municipal Utility District; and Assistant Business Manager Jim McCauley.



WOMEN WORKERS' HISTORY

'Picket, strike, fight'

When 3,000 Chicago garment workers went on strike in February 1924, they placed their lives on the line for labor rights. But employer muscle and their own union's red-baiting doomed their struggle from the beginning.

The fight began on Feb. 27 as a general strike against garment manufacturers. Employers were quick to respond. A judge issued an injunction banning any form of picketing. More than 500 women strikers were arrested for walking a picket line. Police and company thugs ruthlessly attacked the strikers.

The strikers received a boost when 94-year-old Mother Jones stopped in Chicago on her way to California. "This strike of yours is a war," she declared. "Don't care about jails courts or injunctions. Picket, strike, fight."

MY MOTHER DONE TOLD ME!...



The top officials of the International Ladies' Garment Workers Union were engaged in a bitter struggle against the union's left-wing. A popular Chicago leader, Dora Lipschutz, had been expelled from the union despite her coworkers' protests. Notes historian Philip Foner: "While the strike dragged on and women strikers continued to be fined and jailed, the leadership of the ILGWU was devoting all its attention to the battle against the left-wing at the convention scheduled to open in Boston in May." By May, the Chicago strike had been defeated.

Grants to promote women in 'non-traditional' jobs

An Oakland-based program to guide women along the path to non-traditional jobs throughout California has received a \$100,000 grant from the US Department of Labor.

The Hire a Woman project will receive one of 11 grants totaling \$1,000,000 from the US Department of Labor to organizations that help employers and unions establish apprenticeship programs, recruit women and help overcome barriers to women in non-traditional jobs.

Under the "Women in Apprenticeships and Nontraditional Occupations" initiative, the grants will fund technical assistance to employers and unions that develop strategies to increase the employment of women in apprenticeship and nontraditional occupations.

The Hire a Woman project is a partnership between Tradeswomen, Inc. in Oakland and Women in Non-Traditional Employment Roles, in Southern California. The project will use the grant funds to launch a coor-

ordinated campaign of technical assistance to employers and unions locally and statewide to increase the number of women recruited and retained in nontraditional careers in California. It will develop educational resources and presentations, utilizing tradeswomen as role models, to educate and assist employers and unions in increasing the recruitment and retention of women. It will provide local support services for all women recruited through these efforts.

Poorest kids improve in 'Healthy Family' program

Children under the state's Healthy Families program have improved health and do better in school, according to a study released last month, the Associated Press reported.

The Health Status Assessment Project, conducted by researchers at the University of California, San Diego, and the Children's Hospital of San Diego, released its first-year results on the status of the state's new health-insurance program for children of low-income families.

The project, which will track progress for three years, surveyed about 6,000 families and asked them to rate their experience since enrolling in the Healthy Families program a year ago.

Researchers found the greatest improvement in quality of life among children who started the program with the poorest health. Among this group, families noted a 25% improvement in health. That group reported a 68% improvement in the categories of "paying attention in class" and "keeping up with school activities."

Earlier this year, parts of Healthy Families were cut as Gov. Gray Davis and the Legislature acted to close a

\$23.6 billion budget deficit. Davis rejected a proposed \$50 million increase for the program, which would have gone toward expanding the program to parents and more outreach.

But Davis has so far managed to preserve coverage to all children eligible for the program. That could be in jeopardy as the state faces a projected deficit next year of \$21.1 billion.

The programs are open to those

younger than 19 from low-income working families that don't qualify for Medi-Cal but earn less than 250% above the federal poverty limit, which is about \$42,000 a year for a family of four. Parents under this plan pay up to \$27 per month for all the children in the family.

About 615,000 children in California are enrolled in the Healthy Families program, which is expected to cost the state and federal government about \$676 million this year.

Discount computers for union members

Union Plus is a labor-sponsored program to bring discounted products and services to union members.

The Union Plus Computers & Tech Program is now offering name-brand computers to union members at discounted prices.

Union members can plug into these Dell and IBM discounts on-line at:

IBM Computers:
www.unionprivilege.org/benefits/computer/frame_ibm.cfm

Dell Computers:
www.unionprivilege.org/benefits/computer/frame_dell.cfm
 (When ordering from Dell, use code: PS16626766)



60 Years: Albert Motl, left, accepts a 60-year award from Assistant Business Manager Sam Tamimi



35 Years: Ray Scola, left, and Marty Finnerty



25 Years: Gary Magee (middle) had to leave early, but not before receiving his award from Hunter Stern (left) and Sam Tamimi.



25 Years



30 Years

**San Francisco, CA
September 14, 2002**



The Honorees

60 YEARS
Motl, Albert A.

55 YEARS
Broo, Herman L.

40 YEARS
Gan, Helen

35 YEARS
Finnerty, Marty
Lagan, B. B.
McDaniel, M. A.
O'Driscoll, Peter
Peters, Richard
Scola, Raymond J.
Sloan, M.

30 YEARS
Abracosa, Renato
Alberico, Jay
Andrade, Jesse Jr.
Angell, Steve
Bacchetto, Darlene E.
Bamba, Aurelia

Becker, Richard D.
Casserly, Rosemary
Chohlis, Michael J.
Dean, Robert V. Jr.
Dickson, Emma J.
Dietzen, John J.
Emerson, Michael
Fain, Stephen T.
Fassio, Kenneth W.
Flores, Michael
Fong, Sue Lai
Girard, Richard
Hansen, Eric G.
Hill, Levi
Holmes, Ernest L.
Jones, Alfredia
Little, Jerry T.
Marenco, Frank E.
Marrone, Debra
Marymee, Michael
Mayfield, Ercelle
McCoy, Richard
McElrath, Marshall
McHale, Michael P.
Meek, Randolph
Molina, Rosalpina
Pennisi, Frank
Ramos, Evelyn A.
Romero, Orlando
Santoa, Stanley M.
Smith, Robert G.
Solden, Jeff A.
Spadini, Stephen N.
Staange, James J.
Taylor, Edward A. Jr.
Trujillo, Rocky W.

Venturi, Dante
Villa, Pete A.
Wayne, Thomas A.
Wilcox, Robert J.
Young, Harold

25 YEARS
Aasland, Gary
Albar, Sylvia
Aranda, Robert Jr.
Beyk, Norman
Borja, Romuel A.
Budesilich, Robert M.
Clary, Theresa
Da Luz, Brenda
Fontanilla, Thelma S.
Fox, Betty
Gatea, Edward
Harrington, Dolores G.
Hill, Nathan
Hom, Patty
Hu, Julie
Kim, Esther
Lave, Colleen M.
Lindsey, George
Macaluso, Stephen R.
Magee, Gary
McLeod, Mark E.
Nepomuceno, Paul
Ries, Lawrence
Scott, Adrienne
Scigliano, Nadine
Victor, Dave H.
Viray, Arthur M.
Young, Richard



**Bakersfield, Ca.
September 7, 2002**



50 Years: Bernard Fries, left, accepts 50-year award from President Ed Mallory.

The Honorees

50 YEARS

Fries, Bernard T.

35 YEARS

Fisher, L. R.
Luther, E. W.
McCord, Patrick M.
Prior, John H.

30 YEARS

Allamprese, Thomas
Bradford, Paul L. Jr.
Bryan, Clifford
Delgado, Jose V.
Espinoza, Francisco
Jones, Mitchell
Kimble, Jack L.
Kitchen, John E.
Louie, Charles
Martin, Bobby
Marzett, Bennie
Maxwell, Tommy E.
Montague, Lee H.
O'Toole, James H.
Potter, Steven
Romero, Dave P.
Rubbo, Jerry
Stevenson, Gary
Winters, Roena

25 YEARS

Christensen, Ellen
Conners, James L.
Dobrenen, David
Fliss, Pearl
Grant, Janice J.
Harp, Douglas
Jackson, Chris
Jenkins, Richard
Lemons, Justin
Lovejoy, Frank J.
McDougal, Ronald
Patrick, Daniel
Pendergraft, Floyd
Rolow, Mark E.
Santa Ctuz, Alex
Thompson, Robert W.



35 Years: John Prior, left, accepts 35-year award from Bus. Rep. Mike Grill.



30 Years



25 Years

Prescription drug issue awaits new Congress

One of the hottest domestic issues facing the new Republican-controlled Congress when it returns to work in January is prescription drug coverage for Medicare recipients.

Republican strategy was on preview last June when House Republican leaders refused to even allow a vote on a Democratic-backed Medicare prescription drug benefit bill supported by senior citizen groups,

consumer organizations and unions. That bill would have helped all seniors pay for prescriptions as a benefit within the proven Medicare program.

Instead, the Republican leadership engineered passage of a bill written by the HMO and pharmaceutical industries.

The Republican plan, which could resurface in 2003, deliberately bypasses the Medicare program. The plan seeks to induce private insurance companies to sell prescription drug policies rather than provide this coverage through Medicare.

The plan simply subsidizes private insurers and HMOs that may decide to participate.

HMOs and "insurance companies would be free to vary the benefit, jack up the premium and even

exit the marketplace, just as Medicare HMOs disappointed millions of seniors when they decided to close shop," the Consumer Union's Gail Shearer told America@Work.

The bill includes no guarantees that private insurance companies will offer prescription drug policies. Even the drug industry group said the policies on which the Republicans' plan is based are not viable because only people with high prescription medication costs would buy them—and, as a result, insurance companies would make those policies prohibitively expensive.

Under the Democratic alternative, seniors' prescription drug coverage would have been provided through Medicare. Benefits would have been guaranteed to all 39 million Medicare beneficiaries.



Make a Date...

The Local 1245 Retiree Club invites you to join us for companionship, discussion and projects. Current meeting locations are:

East Bay Chapter: meets 2nd Thursday each month, 10 a.m., at Local 1245 headquarters, 3063 Citrus Circle, Walnut Creek, CA.

San Jose Chapter: meets 1st Thursday each month, 10 a.m., at IBEW Local 332, 2125 Canoas Garden, San Jose.

YOUR UNION

Don't underestimate this union's members

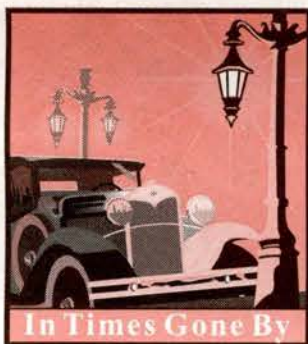
► From Page 2

pate in central labor councils.

When you look at the big picture, we have nothing to be ashamed of when it comes to membership participation. Do we wish that more members voted in ratifications and union elections? Of course. Could we do a better job of getting our members involved? Of course, and we are trying to.

This is especially true when we look at the age of our membership. Our employers are afraid of losing their best employees in the next few years to retirement, and we are afraid of losing some of our very best stewards and activist members. We can and must do a better job in getting our younger members involved. Not because our membership is not involved now, but because we need to be looking to the future.

I am proud of many things about Local 1245, and the overall participation by thousands of our members is what makes me the proudest. We can and will do better, but the interest and contributions of our members today should not be underestimated.



In Times Gone By

1949

Electric Line Crew Pacific Gas & Electric Manteca, California



IBEW 1245 archives, courtesy Everett Baldwin

PG&E crew working in Manteca, CA in 1949 included (from left) Theron Hodson, lineman; Everett Baldwin, Truck Driver; Ed Star, Line Foreman; Dewy Clark, Lineman; Ray Wilson, Lineman (not in picture); Ron Rader, Groundman.

IBEW 1245 Unit Meeting Schedule: January - June 2003

CITY	UNIT #	LOCATION	UNIT CHAIR	DAY	TIME	Jan	Feb	Mar	Apr	May	Jun
Alturas (Frontier)*	4013	The Brass Rail, Hwy 395	M. Nelson	Wednesday	5:30pm	15	12	12	9	14	11
Angels Camp	2512	Mike's Pizza, Hwy 49/Murphy Grade Rd.	G. Day	Thursday	4:00pm	16	20	20	17	15	19
Antioch	2317	Aladino's Pizza, 1324 Sunset Dr.	D. Tucker	Wednesday	5:00pm	8	12	12	9	14	11
Auberry	1129	Daddy Joe's Java, Auberry Road	D. Cannon	Tuesday	5:45pm	21	18	18	15	20	17
Auburn	3511	Round Table Pizza @ Auburn-Folsom Road*	T. Andreucci	Tuesday	5:00pm	14	11	11	8	13	10
Bakersfield	1112	Labor Hall, 200 W. Jeffery St.	D. Scott	Wednesday	6:00pm	8	12	5	9	7	11
Buellton	1221	Antonio's Pizza 280 E. Highway 246	T. Mathews	Monday	4:00pm	13	3	10	7	5	*9
Burlingame/Penninsula	1512	TWU Local 505, 1521 Rollins Rd., Burlingame	B. Quinn	Wednesday	5:30pm	8	12	12	9	14	11
Burney	3213	Sam's Pizza, Hwy 299, Johnson Park	W. Rodriguez	Tuesday	6:00pm	7	4	4	1	6	3
Burney (Frontier)*	4015	Sam's Pizza, 38077 Hwy 299 East	D. Trowbridge	Tuesday	6:00pm	14	11	11	8	13	10
Carson City, NV	3312	Carson City Fire Department Station 5	S. Cherry	Tuesday	5:30pm	7	X	11	X	13	X
Chico/Asplundh Tree	4710	Round Table Pizza, Pillsbury Road	J. Lococo	Thursday	5:00pm	23	27	27	24	29	26
Chilcoot	3514	Wooden Rose Café, Hwy 70	H. Myers	Wednesday	6:00pm	8	12	12	9	14	11
Coalinga	1121	PG&E Service Center, Merced Avenue, Coalinga	D. Baldwin*	Wednesday	4:00pm	15	19	12	16	14	18
Cobb/NCPA*	3719	American Legion StarView Post 850	G. Bentley	Wednesday	4:30pm	29	26	26	30	28	25
Concord/Walnut Creek	2316	Round Table Pizza, 2960 Treat Boulevard	R. Lassus*	Thursday	5:00pm	9	13	13	20	8	12
Elk Grove (Frontier)*	4014	Holiday Inn Express Hotel, 9175 W. Stockton Blvd.*	R. Alexander	Thursday*	6:00pm*	9	13	13	10	8	12
Elko, NV	3318	Stockman's Casino, Elko	T. Norlen	Thursday	5:30pm	23	20	20	17	22	19
Ely, NV/Mt. Wheeler	3315	Ely Fire Dept, Meeting Hall	M. Venturino	Tuesday	4:30pm	21	X	18	X	20	X
Eureka	3111	Labor Temple, 9th & "E" Street	C. Wood	Tuesday	6:00pm	14	11	11	15	13	10
Fort Bragg/Pt. Arena	3717	Fort Bragg Service Center, Fort Bragg	G. Fernandez	Thursday	5:00pm	23	20	20	24	22	19
Fresno	1111	Cedar Lanes, Cedar & Shields	C. Habecker	Tuesday	5:00pm	7	4	4	1	6	3
Fresno/Asplundh Tree	4712	Bobby Salazar's Mexican, Blackstone Avenue, Fresno	S. Castaneda*	Thursday	4:00pm*	2	6	6	3	5	2
Grass Valley	3513	Swiss House, 535 Mill St. (Hwy 49 and Hwy 20)	J. Maslov*	Wednesday	6:00pm	8	12	12	9	14	11
Hayward/Fremont/Livermore	2314	Bronco Billy's Pizza, 3940 Smith St., Union City	I. Araquistain	Wednesday	5:30pm	15	19	19	16	21	18
Hinkley	1311	PSEA Rec. Room, Hinkley Station	P. Earl	Wednesday	5:30pm	X	5	X	2	X	4
Hollister	1219	Straw Hat Pizza, 191 A San Felipe, Hollister	J. Vermilyer	Wednesday	5:00pm	8	5	5	2	7	4
Jackson	2513	Mountain Mike's Pizza, 525 S. Hwy 49	B. Boitano	Tuesday	4:00pm	7	4	4	1	6	3
Kettleman	1314	Kettleman Compressor Station	M. Guzman*	Tuesday	5:30pm	14	X	11	X	13	X
King City	1213	Round Table Pizza, 500 B Canal St., King City	F. Padilla*	Wednesday	3:45pm	15	12	12	9	14	11
Lakeport	3715	Senior Center, 527 Konocti Ave.	B. Dawson	Tuesday	5:00pm*	7	4	4	8	6	3
Lemoore	1128	Fleet Reserve, 788 "D" Street.	M. Ormonde	Thursday	5:30pm	9	13	6	10	8	12
Lodi, City of	2516	Round Table Pizza, Kettelman Lane, Lodi	R. Willett	Thursday	5:00pm*	9	13	13	10	8	12
Los Banos	1115	Stockmans, 615 "I" Street, Los Banos	J. Walpole	Tuesday	4:00pm	14	11	11	8	13	10
Manteca	2510	Moose Lodge, 1185 North Main Street, Manteca	J. Mendoza	Wednesday	6:30pm	*15	5	5	2	7	4
Marysville	3611	Stassi's, Fourth Street	M. Anderson	Wednesday	5:00pm	7	5	5	2	7	4
Merced	1123	Branding Iron, 640 W. 16th St.	P. Galan	Wednesday	5:30pm	8	5	5	2	7	4
Merced ID	1122	Branding Iron, 640 W. 16th St., Merced	J. Ellett*	Thursday*	5:00pm	9	6	6	3	8	5
Modesto	2515	Days Inn, 1312 McHenry Blvd.	F. Malcria	Wednesday	5:30pm	8	12	12	9	14	11
Modesto/Modesto Irr. Dist.	2518	Pizza Pub, Kansas Avenue @ Emerald, Modesto	R. Wright	Wednesday	4:30pm	1	5	5	2	7	4
Morro Bay	1222	Round Table Pizza, 1050 Los Osos Valley Rd.	R. Tapia	Thursday	4:00pm	16	13	13	10	15	12
Napa	3716	Round Table Pizza, 3331 Solano Ave. Napa	J. Kent	Thursday	6:00pm	9	6	6	10	8	5
North Lake Tahoe/Kings Beach	3320	Carpenter's Hall, Kings Beach (Deer Street)	B. Wermuth	Wednesday	5:30pm	15	19	19	16	21	18
Novato/Marin County	3711	Round Table Pizza, S. Novato Blvd.	I. Snyder	Wednesday	5:30pm	8	12	12	9	14	11
Oakland Physical	2311	Francesco's, Hegenberger & Pardee	B. Simmons	Tuesday	4:30pm	7	4	4	1	6	3
Oakland/City of	2211	Francesco's, Hegenberger & Pardee	L. Rodriguez	Thursday	4:00pm	16	20	20	17	15	19
Paradise	3417	Round Table Pizza, 6038 (B) Clark Road, Paradise*	R. Bentler	Wednesday	5:30pm	15	12	12	9	14	11
Placerville	3813	Spanky's Pizza, 197 Placerville Dr.	H. Garcia	Tuesday	4:00pm	7	4	4	1	6	3
Placerville/Asplundh Tree	4714	Round Table Pizza, 512 Main Street, Placerville	J. Atkinson*	Monday	4:00pm	6	3	3	7	5	2
Pollock Pines/Fresh Pond	3912	50 Grand Club	G. Stoffer	Wednesday	6:00pm	8	5	5	2	7	4

IBEW 1245 Unit Meeting Schedule: January - June 2003

CITY	UNIT #	LOCATION	UNIT CHAIR	DAY	TIME	Jan	Feb	Mar	Apr	May	Jun
Portland, OR/PG&E GTNW	3026	PGT Headquarters - Portland	S. Corey	Wednesday	12:00pm*	15	19	19	16	21	18
Red Bluff	3214	Crystal Restaurant, 343 S. Main Street, Red Bluff	S. Burton	Thursday	5:30pm	9	5	5	3	8	5
Redding	3212	Round Table Pizza, 2808 McMurry Dr., Anderson	A. Streetman	Wednesday	5:15pm	8	5	5	2	7	4
Redding, City of	3217	Labor Council, 900 Locust St.	D. Norman*	Wednesday	5:30pm*	**1	5	5	2	7	4
Redding/Davey Tree	4419	Round Table Pizza, 900 Dana Drive	G. Suarez	Wednesday	5:00pm	22	26	26	23	28	25
Redmond, OR	3024	PGT Headquarters - Redmond	J. Kisse	Thursday	5:00pm*	9	13	13	10	8	12
Redwood City/Asplundh Tree	4711	Mountain Mike's Pizza, 120 El Camino Real	C. Cardenas*	Tuesday	4:00pm*	21	18	18	15	20	17
Reno, NV	3311	IBEW LU 401, 2713 E. 4th St.	W. Patterson	Wednesday	7:00pm	1	5	5	2	7	4
Richmond	2318	La Strada Rest., 2215 Church Lane, San Pablo	C. Jackson	Wednesday	4:45pm*	*2	5	5	2	7	4
Richmond/E. Bay Clerical	2301	La Strada Rest., 2215 Church Lane, San Pablo	D. Ambeau	Wednesday	6:00pm	*2	5	5	2	7	4
Riverside/Outside Line So.	4912	1074 La Cadena Drive #5	J. Johnstone	Saturday	10:00am	18	15	15	19	17	21
Roseville, City of	3512	Fast Freddie's Pizza, 130 Main St.	T. Bakkie	Tuesday	4:15pm	14	11	11	8	13	10
Sacramento	3811	Florin Rebecca Hall, 8360 Florin Rd., Sacramento	L. Mennel	Wednesday	5:15pm*	*2	5	5	2	7	4
Sacramento Clerical	3801	Sacto Central Labor Council, 2840 El Centro	S. Smith	Thursday	5:30pm	16	20	20	17	15	19
Sacto. Muni Utility District	3911	Sacramento Central Labor Council, El Centro & I-80	G. Ritchie	Wednesday	5:00pm	15	12	12	9	14	11
Sacto. Regional Transit	3011	The Old Tavern, 1510 20th St., Sacramento	C. Bibbs	Wednesday	5:00pm	15	19	19	16	21	18
Sacto./Outside Line No.	4911	IBEW LU 340 Hall, 2840 El Centro	L. Thomson	Saturday	10:00am	11	8	8	12	10	14
Salinas	1211	Mountain Mike's Pizza, 315 E. Alisal St., Salinas	S. Lazano	Tuesday	5:15pm*	7	4	4	1	6	3
San Francisco	2412	Ship Clerks Union Local 34 Hall, 4 Berry St.	J. Petrovich	Wednesday	4:30pm	8	5	5	2	7	4
San Jose	1511	Straw Hat Pizza, 1535 Meridian Ave., San Jose	F. DeAguinaga	Wednesday	5:15pm	8	12	12	9	14	11
San Jose/Asplundh Tree	4713	Desperado Restaurant, 1593 Monterey Road, San Jose	E. Arellano*	Thursday	4:00pm*	9	13	13	10	8	12
San Luis Obis./Pismo Beach	1215	Round Table Pizza, 1055 Olive St.	T. Castanon	Thursday	4:00pm	9	6	6	3	8	5
San Luis Obispo/DCPP	1220	Margie's Diner, 1575 Calle Joaquin	L. Moon	Wednesday	5:30pm	8	5	5	2	7	4
Sandpoint, ID	3021	Blue Moon Café	T. Anderson	Thursday	5:00pm	16	20	20	17	15	19
Santa Clara, City of	1411	Vesuvius Restaurant, 3044 El Camino	R. Muraca	Thursday	4:00pm	9	13	13	10	8	12
Santa Cruz	1513	VFW Post #7263, 2259 7th Ave., Santa Cruz	A. Freitas	Tuesday	6:00pm	14	11	11	8	13	10
Santa Maria	1216	Round Table Pizza, 2508 S. Broadway, Santa Maria*	M. Landeros	Tuesday	4:00pm	7	4	4	1	6	3
Santa Rosa	3712	Round Table, Steele & Cleaveland	L. Stubblefield	Tuesday	6:00pm	7	4	4	1	6	3
Selma	1120	Sal's Mexican Restaurant, 2163 Park St.	P. Sandoval	Thursday	4:30pm	16	13	13	10	15	12
Shasta - USBR	3218	Keswick Dam Rd., Keswick	B. Chambers	Wednesday	5:15pm	8	12	12	9	14	11
Sonora	2517	The Peppery, 13494 Mono Way	B. Owens	Tuesday	4:00pm	14	11	11	8	13	10
Sonora/Asplundh Tree	4715	Round Table Pizza, 13769-B Mono Way, Sonora	N. Schader	Monday	4:00pm	6	3	3	7	5	2
South Lake Tahoe	3314	Moose Lodge	P. Stahl	Thursday	5:15pm*	2	6	6	3	1	5
Spankel, WA/Rosalia	3027	Harvester Restaurant, Spankel, WA	P. Brown	Thursday	5:00pm	9	13	13	10	8	12
Stockton	2511	Ed Stewart American Legion Post #803, 3110 N. West Ln.	C. De La Torre	Thursday	6:30pm	9	13	13	10	8	12
Susanville (Frontier)*	4012	The Pizza Factory*	J. Lovercheck	Thursday	5:30pm	16	13	13	10	15	12
Templeton	1217	The Pizza Place 105 Main St.	G. Burk	Tuesday	4:00pm	14	11	11	8	13	10
Tiger Creek/Pine Grove	2519	Pine Grove Pizza, 19724 St. Hwy 88, Pine Grove	R. Davis	Tuesday	6:00pm	21	18	18	15	20	17
Topock	1313	PSEA Mobil Hm., Topock/Moabi	G. Shettko	Thursday	4:45pm	X	6	X	3	X	5
Turlock	1126	Sidelines Bar & Grill, 2321 West Main St., Turlock	R. Lane	Thursday	4:00/5:00 p.m.	2	6	6	3	1	5
Ukiah	3714	The Wright Stuff Pizzadome	M. Perez*	Wednesday	5:00pm	8	5	5	9	7	4
USBR/CVO*	3012	Round Table Pizza, 7943 Greenback Lane, Citrus Hts.	M. McKay	Tuesday	5:00pm	14	11	11	8	13	10
Vacaville	3812	Pietro's #2 679 Merchant St., Vacaville	E. Owens*	Wednesday	5:00pm	8	12	12	9	14	11
Walla Walla/PG&E GTNW	3023	PGT Headquarters - Wallula	M. Prior	Thursday	5:00pm	9	13	13	10	8	12
Wells R.E.C.	3319	Silver Sage Senior Citizens Center, 1st St., Wells NV	C. Swett	Wednesday	5:00pm*	22	X	19	X	21	X
Winnemucca	3317	47 E. Winnemucca Boulevard	S. Morris	Wednesday	7:00pm	X	19	X	16	X	18
Woodland	3814	American Legion Hall, 523 Bush Street	B. Wallace	Thursday	5:00pm	9	13	13	10	8	12
Yerrington	3313	Pacific Avenue Firehouse	L. Soukup	Tuesday	5:00pm	14	X	11	X	13	X

* Indicates change since schedule was last published in June 2002.



All Local 1245 unit meetings are open to all Local 1245 members, regardless of employer.



Fresno/Merced, Ca.
April 12, 2002



60 Years: Clifford Smith and wife Ruth.

The Honorees

60 YEARS
 Smith, Clifford R.

40 YEARS
 Peyton, W. P.

35 YEARS
 Altamirano, P. E.
 Armstrong, E. L.
 Duncan, James
 Garcia, Thomas
 Hunt, T. C.
 Hunt, Thomas R.
 Johnson, Otis Jr.
 Martinez, A.
 McGinnis, Lloyd
 Monis, F.
 Nocetti, L.
 Rivas, Bernabe C.
 Roberts, T. C.
 Smith, Edward A.
 Sullivan, Richard M.
 Yocum, Dwight M.

30 YEARS
 Alvarez, Amelia M.
 Avila, John P.
 Azera, George
 Baxter, Robert
 Belloli, Michael E.
 Camarillo, Richard C.
 Cannon David
 Cerda, Juan T.
 Champion, Wayne C.
 Davis, Johnny
 Deldotto, Edward F.
 Ferreira, Manning J.

Frasier, Stephen J.
 Fraijo, A. F.
 Garcia, Robert A.
 Garza, Arnold
 Glass, Donald M.
 Glover, Richard
 Harris, Otha B.
 Hendrix, Tim L.
 Hill, Kenneth D.
 Hogan, Vincent G.
 Huey, Jerry C.
 Jackson, Elvin K.
 Jaurigue, John
 Jones, Ronald L.
 Landers, Steve
 Lehman, David W.
 Lopez, Edward E.
 Lewelling, Vernon J.
 McCoy, Alfred C.
 McPhetridge, Gene A.
 Morita, Linda
 O'Neil, Larry
 Padilla, Louis J. Jr.
 Perez, Daniel J.
 Ramos, Rudy
 Rentfrow, James W.
 Rhoades, John M.
 Romero, Manuel
 Savage, Jack C.
 Schulte, Patrick
 Travis, Leroy
 Turner, Joseph W. Jr.
 Valdez, Joe
 Waggerman, Larry
 Weaver, Jack M.
 Wilfong, Lloyd L.

25 YEARS
 Anderson, Randy J.
 Bettini, James
 Carrasco, Johnny Jr.
 Cardoza, Cheryl
 Chavez, J. J.
 Clark, Jolene
 Corpus, Steve
 Divine, Darlene
 Garcia, Stephen
 Gibson, Troy L.
 Gonzales, Robert
 Goodson, Timmie W.
 Gutierrez, Antonio
 Hagen, Josie A.
 Hall, Michael
 Haygood, Brian A.
 Hinojos, Shelley E.
 Jameson, Michael T.
 Jason, Jan L.
 Jones, John
 Kawano, Colin M.
 Marks, George
 Martin, Michael
 Meagher, Vincent
 Mendes, Arthur
 Micheli, Michael
 Holt, Linda
 Petersen, James
 Pineda, Ralph
 Rodgers, Richard B.
 Rosales, Jess Jr.
 Santoyo, Dorian
 Slocum, Dennis K.
 Telles, Robert
 Unruh, Loren
 Urena, Jose
 Wheeler, Brian E.
 Wong, Shelly J.



40 Years: William Peyton (second from right) is congratulated by Business Rep. Jim Lynn, Business Manager Perry Zimmerman, and Business Rep. Gary Hughes.



25 Years



35 Years