

Employee voices are heard

Local 1245 slams door on Nevada deregulation

In a sweeping legislative victory, Local 1245 and its allies shut the door on electric deregulation in Nevada last month with the passage of Assembly Bill 369.

With the passage of the historic bill, Local 1245 achieved two of its major objectives in the on-going battle to preserve customer service and union jobs in Nevada's utility industry.

The bill imposes a two-year moratorium on the divestiture of electric generating assets by Sierra Pacific Resources. The bill also reinstates deferred energy accounting, which allows the utility to adjust its rates to recover increases in the cost of fuel and purchased power.

"We actively supported both these provisions as necessary for restoring Sierra Pacific's financial health," said Local 1245 Business Manager Jack

McNally. "They were also needed to restore the public's belief in the fairness of the rate-making process."

The divestiture of all Sierra Pacific Resources' generating units, ordered by the Public Utilities Commission of Nevada as a condition of the Sierra Pacific-Nevada Power merger, would have doubled Nevada's exposure to the same dysfunctional western wholesale energy market that has cost the state of California over \$5 billion and driven PG&E into bankruptcy court.

The elimination of the deferred energy accounting by the last session of the Nevada Legislature proved to be a near-disastrous decision that left Sierra Pacific Resources with no clear rate-making mechanism to pass on the unprecedented increases in the cost of fuel and purchased power during the last year.



REVIEWING LEGISLATIVE STRATEGY IN NEVADA
 Reviewing Local 1245's efforts to block electric deregulation in the Nevada Legislature are, from left, Local 1245 Legislative Advocate Robert Johnston, Local 1245 Business Reps. Randy Osborn and Ray Thomas, and Legislative Advocate Ernest Adler.

"AB 369 completely repeals electric deregulation, although it is unclear whether further legislative attempts this session may reverse this action," said Local 1245 Business Rep. Ray Thomas.

"It is likely now that any retail competition allowed during the next several years would apply only to the largest commercial and industrial customers," he said.

Fed proposes more money for gougers

The Federal Energy Regulatory Commission poked another finger in the eye of California last month when it proposed a surcharge on electric consumers to pay off unregulated generators for any money they may lose in PG&E's bankruptcy.

FERC's proposed intervention in California's state-regulated retail electric rates was in stark contrast to the federal agency's repeated refusal in recent months to impose wholesale price caps.

"By imposing caps FERC could have stopped the hi-jacking of California's energy market by unregulated generators and prevented the bankruptcy of PG&E," said Business Manager Jack McNally, "but they said the market would fix itself. Now




Eric Wolfe

PROCESSING CANDIDATE RESUMES

The Local 1245 Election Committee spent many painstaking hours processing the resumes of candidates for local union election. The resumes appear in this issue of the Utility Reporter. Serving on the committee are, standing from left: Raymond Shepherd (PG&E, Oakland Gas Service), Jerry Takeuchi (PG&E, San Francisco Electric), Art Freitas, Judge (PG&E, Santa Cruz), Stoney Burk, Assistant Judge (Alameda Power and Telecom), and John Wayne Johnson (PG&E, Richmond Electric). Seated, from left, are: Norma Ricker (PG&E, Sacramento Call Center), Sherry Barton (PG&E, Bakersfield Clerical), Donna Ambeau (PG&E, East Bay Clerical), and Vickie Borst (Sierra Pacific Power).

Page 3 ▶

Feature

 'Rosies' Remember 8

Members at Work
 Transformer Repair 6-7

Inside

Point of View
 The Tough Decisions 2

Tree Trimmers
 Confronting Asplundh 3

Retiree Corner
 Tabulating Surveys 5

Safety Matters
 Fix Workers Comp! 9

Service Awards
 Ukiah-Area Members Honored 10

EVENTS

MAY 12

Service Awards
Reno, NV

Steward Conference
Reno, NV

MAY 18

Service Awards
Winnemucca, NV

MAY 19

Service Awards (Public Sector)
Sacramento, CA

Steward Conference (Public Sector)
Sacramento, CA

APPOINTMENTS

CONFERENCES, COUNCILS & CONVENTIONS

California Labor Federation Joint Legislative Conference

Howard Stiefer
Jim McCauley
Mike David
Ed Mallory
Eric Wolfe
Jim Findley
Hunter Stern

IBEW Utility Conference

Jack McNally
Howard Stiefer
Jim McCauley
John Mendoza
Anna Bayless Martinez
Ed Mallory
Mike Davis
Dorothy Fortier
Roger Stalcup
Ray Thomas
Bob Choate
Arlene Edwards
Linda Jurado
David Scott

IBEW Construction and Maintenance Conference

Jack McNally
Bob Choate
Art Murray
Tom Brown

Nevada State AFL-CIO Legislative Conference

Ray Thomas
Randy Osborn
Lynn Allen

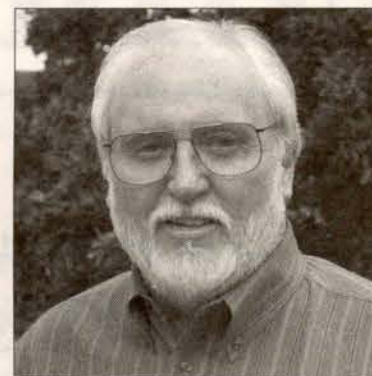
Congress of California Seniors

Orville Owen
Jack Hill
Watie Athney
Richard Murphy

POINT OF VIEW

Leadership is about making the tough decisions

By Jack McNally, Business Manager



If things go as predicted, California is headed for a summer of blackouts. Price gouging by electric wholesalers continues, and could get much worse as demand for power hits its summer peaks. PG&E is in bankruptcy court, Southern California Edison may soon follow, and the state itself—now paying as much as \$90 million a day for electricity—is being pushed in the same direction.

We're all on a bus heading toward a cliff, but no one seems ready or able to grab the wheel and turn the bus around.

Legislators have generated countless energy bills this session, many with some merit. The California Power Authority, if enacted, could eventually reduce the clout of the unregulated generators by increas-

ing the amount of generation under the public's control. A bill by Carole Migden would make it easier for municipalities to become energy "aggregators," giving consumers a way to increase their influence in the market without having to go through the costly and burdensome process of municipalization.

A bill proposed by Lt. Gov. Cruz Bustamante would impose criminal penalties on those convicted of price gouging, and another bill seeks to get some of our money back from the price gougers by imposing a windfall profits tax on them.

All of these bills may help down the road. And recently enacted conservation measures might even provide some help this summer.

But we're still headed for the cliff

this summer, and it's too late for the legislature to do anything about it. We have to look somewhere else for leadership, and there are only two people who actually have the power to turn this bus around. One is President George W. Bush. The other is Gov. Gray Davis.

It may be too late to avert blackouts, but George W. Bush could stop the price gouging in a heartbeat by telling the Federal Energy Regulatory Commission to impose price caps on wholesale prices. He refuses to do that. Instead, FERC has proposed federal energy surcharges on California ratepayers to make sure that the unregulated pirate generators don't lose a penny in the PG&E bankruptcy.

Gray Davis is the other person who could keep the bus from going off the cliff this summer. By using his emergency powers, Gov. Davis could seize some of these plants and run them on a cost-of-service basis.

Opponents of plant seizure say it would drive power producers out of the state, but this is a smokescreen. Generators will continue to be interested in California as long as they can make a reasonable profit here. It's the unreasonable profits that must be stopped.

And if the generators leave the California market, the state can start building its own plants and contract with the utilities to operate them.

Anyone can make decisions. Leadership is about making the tough decisions. While California is accelerating toward the cliff, Gray Davis seems to be huddled with his advisors in the back of the bus trying to find a way to please everybody.

It's time for Gov. Davis to come up to the front of the bus and grab the wheel. The days are heating up and time is running short.



UtilityReporter

May 2001
Vol. 50 No. 5
Circulation: 23,800



Business Manager & Executive Editor
Jack McNally

Communications Director & Managing Editor
Eric Wolfe

President
Howard Stiefer

Executive Board
Jim McCauley
E. L. "Ed" Mallory
Anna Bayless-Martinez
Chris Habecker
Kathy F. Tindall
John Mendoza

Treasurer
Michael J. Davis

Published monthly at 3063 Citrus Circle, Walnut Creek, California 94598. Official publication of Local Union 1245, International Brotherhood of Electrical Workers, AFL-CIO, P.O. Box 4790, Walnut Creek, CA 94596.

Periodical postage paid at Walnut Creek and at additional mailing offices. USPS No. 654640, ISSN No. 0190-4965.

POSTMASTER: Please send Form 3579, Change of Address, and all correspondence to Utility Reporter, P.O. Box 4790, Walnut Creek, CA 94596.

Single copies \$1. Subscription by arrangement. Have you moved recently? Please send complete new address and your Social Security Number (by U.S. Mail) to: "Address Change", IBEW Local 1245, P.O. Box 4790, Walnut Creek, CA 94596. Our Web Site can be viewed at www.IBEW1245.com. Our phone number is (925) 933-6060.

Local 1245 targets Asplundh Tree's subsidiary

Local 1245 called on Asplundh Tree Expert Co. last month to apply union-scale wages and benefits to the tree trimmers at a newly-acquired subsidiary.

Prior to its purchase by Asplundh in February, Utility Tree was the largest nonunion line clearance tree trimming contractor working on the Pacific Gas & Electric system. Local 1245 maintains that these employees are now covered by the union's labor agreement with Asplundh.

In a letter to Asplundh, Local 1245 Business Manager Jack McNally demanded that the company "immediately apply all terms of our existing agreement to all Asplundh employees working on the property of PG&E, SMUD, and the City of Palo Alto, including former Utility employees."

The union also filed a grievance calling for Asplundh to acknowledge that the employees are entitled to union wages and benefits.

"Allowing Asplundh to operate its subsidiary as a non-union company on PG&E property would create a serious threat to union tree trimmers," McNally told the Utility Reporter. "Through its unionized firm, the non-union arm would have direct knowledge of a union bid price on future line clearance projects."

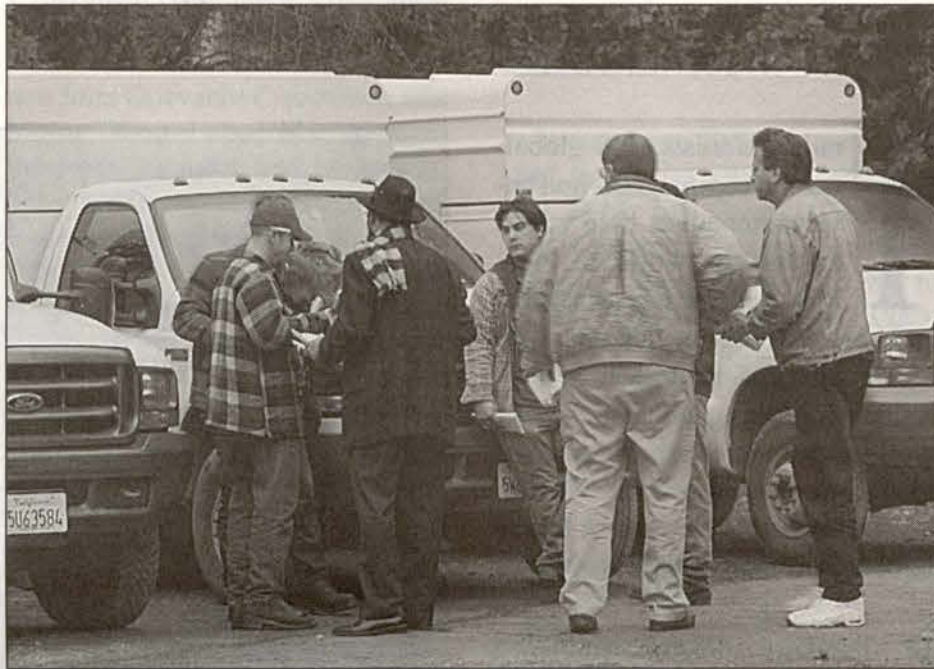
The union believes this could give the nonunion arm an unfair advantage in bidding on future projects.

"This tactic may be potentially more harmful to unionized tree trimmers than the unilateral reduction in wages Asplundh attempted in 1992," said McNally. "They are going to attempt to lower wages and benefits under the cover of a yellow coat of paint and a different company name."

Asplundh paints its trucks orange, but it appears to be maintaining Utility Tree's trademark yellow paint for its subsidiary's fleet.

In addition to pursuing a grievance, the union has been making direct contact with the former Utility Tree employees now working in the Asplundh organization.

"This is a campaign on two fronts," said Senior Business Rep. Landis Marttila. "We're going at Asplundh



TALKING UNION AT ASPLUNDH

Local 1245 Business Reps. Landis Marttila, Kit Stice and Phil Carter speak with employees of Asplundh Tree's non-union subsidiary on a March morning before work. The union has filed a grievance against Asplundh demanding that it pay union wages and benefits at its newly-acquired subsidiary, the former Utility Tree.

through the grievance procedure, but we're also laying the groundwork for an organizing campaign in case that becomes necessary."

Local 1245 organizers began approaching employees of the former Utility Tree in the Nevada City area in March, shortly after the company was acquired by Asplundh. A supervisor for the Asplundh subsidiary then threatened employees with termination for any contact with the union.

A week later, four Local 1245 business representatives came to the Nevada City yard to inform the supervisor that employees had a federally-

protected right to speak with the union. The union reps then spoke with the employees about these same rights.

Later some of the tree trimmers met with Local 1245 representatives to discuss their concerns.

"The employees know the company is owned by Asplundh now, despite the company's confusing assertions about their non-union status," said Marttila. "There is definite interest in the union's effort because these employees want what every line clearance tree trimmer wants: a union contract that offers them job security and stable wages and benefits."

FERC plan to help price gougers

► From Page 1

suddenly they have to get involved to make sure these pirates can loot California for every last penny."

FERC's proposal not only conflicts with its past position on not intervening in the market, it appears to directly challenge the state's right to determine retail rates for the utilities it regulates.

Senator Dianne Feinstein called

the surcharge "outrageous" and said it would "ensure that power generators get paid fully for their price gouging."

One veteran FERC staff member, speaking anonymously, told the Wall Street Journal he couldn't remember any precedent for the proposed action.

"It's asking us to be a collection agent for bills that aren't just and reasonable," he said.

Unit updates

Unit 3417, Paradise, has moved its meeting to later in the month and earlier in the evening. The meeting time is now 5:30 pm. The location remains unchanged. Following are the dates for the rest of the year: May 15, June 19, July 17, Aug. 14, Sept. 18, Oct. 16, Nov. 13, Dec. 18.

Kit Stice
Business Rep.

Unit 1213, King City, will now meet on the third Wednesday of the month instead of the second Thursday. Meeting time remains 3:45 pm. Meeting location remains Round Table Pizza at 500 B Canal Street. The new dates are: May 16, June 20, July 18, Aug. 15, Sept. 19, Oct. 17, Nov. 21, Dec. 19.

Bill Brill
Business Rep.

Mike Vrooman

Local 1245 mourns the death of Mike Vrooman, a 33-year member. Brother Vrooman, a crew leader in PG&E's Water Department, served on many committees and was a long-time union steward. Local 1245 extends its condolences to the friends, family and co-workers of Brother Vrooman.

Dean Van Cleave

Dean Van Cleave, a Hiring hall Power Plant Operator, died April 3 of an apparent heart attack at The Geysers Unit 13. Brother Van Cleave, 54, had approximately three years service at PG&E. Local 1245 extends its condolences to the friends, family and co-workers of Brother Van Cleave.



Trade protest in Quebec City

Up to 45,000 activists from the world over converged on Quebec on April 20-22 to protest the Summit of the Americas in Quebec City, where leaders of 34 countries met to discuss multilateral issues, including the Free Trade Area of the Americas (FTAA).

Although based on the North American Free Trade Agreement (NAFTA), the FTAA would, according to reports from its nine Negotiating Groups, far surpass NAFTA in its scope and power.

FTAA would encompass a population of 800 million and a combined GDP of \$11 trillion. It would incorporate the powers of the proposed services agreement at the World Trade Organization (WTO), as well as those of the failed Multilateral Agreement on Investment (MAI). In short, it would combine the most ambitious elements of every global trade and investment agreement—existing and proposed—into one hemispheric pact, with sweeping authority over every aspect of life in the Americas.

The proposed FTAA would give transnational corporations unequalled new “rights” to challenge and compete for every publicly funded service now provided by governments—from health care and education to social security, culture and environmental protection.

If adopted, it could remove the ability of every government to create or maintain laws and regulations protecting the health, safety and well-being of their citizens and the environment they share.

Working people demonstrate on May Day

Trade unionists, anti-globalization campaigners and environmentalists held rallies around the world to mark May Day, the day celebrated as Labor Day worldwide since the 1880s. Many of the demonstrations reflected growing concern among working people about the impacts of globalization on their jobs. The following reports were carried by the LabourStart internet news service:

► **Taiwan:** An estimated crowd of 10,000 unemployed Taiwan workers and union activists braved a downpour to march through the capital of Taipei on May Day to demand jobs. The demonstrators blew horns and held aloft a sea of banners, but they were stopped by barbed wire and police from marching on the presidential office building in central Taipei. “Workers need to survive,” the protesters chanted as they punched their fists into the air. No outbreaks of violence were reported.

► **South Korea:** Twenty thousand demonstrators brushed aside a police barricade to take their May Day rally toward the main government district of Seoul, the South Korean capital. The workers were protesting economic reforms that have resulted in layoffs. About 15,000 security forces were put on alert for the rally after the Korean Confederation of Trade Unions (KCTU) vowed to march into the government district. A large banner declaring: “Down With Kim Dae-Jung Regime” was displayed behind about 20 disabled workers in wheelchairs at the front of the march. Demonstrators wore red headbands saying: “Fight for survival rights” and “Fight for job security.”

► **North Korea:** About 500 South Korean trade unionists also attended an unprecedented joint rally with workers in communist North Korea.



REBELLION ON THE BORDER

Libre asociacion sindical—the right to organize and choose your own union—is the subject of a photo exhibit by David Bacon at the University of California, Los Angeles, covering the independent union struggle in the maquiladoras to the organizing efforts of immigrants in California. From April 30-May 18 at the Kerchoff Art Gallery, Kerchoff Hall, 308 Westwood Plaza, Los Angeles. For more information call Daniel Kato at 310-794-5983. Above: Silvestre Rodriguez, a leader of the independent union at the Han Young maquiladora in Tijuana.

► **United Kingdom:** More than 6,000 police were deployed as thousands of people stage a series of protests in the heart of London.

► **Russia:** Tens of thousands of people in Russia marched to demand better pay and more jobs. Nationalistic themes were sounded during demonstrations in Siberia and the Far East.

► **Australia:** Dozens of marchers were arrested after demonstrators attempted to blockade the Sydney stock exchange. Protesters in Brisbane threw themselves on the road to try to prevent police vans taking those arrested away.

► **Thailand:** About 20,000 laborers in Bangkok demanded that the new Thai Rak Thai (Thais Love Thais) government keep its promise to provide social security for the out-of-work.

► **Pakistan:** Police arrested more than 150 pro-democracy protesters in the port city of Karachi. They were attempting to defy a ban on public meetings imposed by the military regime.

► **Cambodia:** In Phnom Penh, more than 2,000 people demanded better conditions for Cambodia’s estimated 150,000 garment factory workers.

► **Hong Kong:** In Hong Kong, hundreds of local and foreign workers staged protests against high unemployment, Hong Kong radio reported.

► **Norway:** Foreign Minister Thorbjørn Jagland was in for a surprise when protesters threw a cream pie in his face. He lightheartedly cleaned himself up and proceeded to lead a labor march in Oslo.

Local 1245 retirees elected to Board of Congress of California Seniors

By Orv Owen

Local 1245 Retirees Club members Jack Hill and Waite Anthony have been elected to the Board of Directors of the Congress of California Seniors.

Local 1245 retirees joined other senior activists at the 24th Annual Congress on April 10-11 in San Jose to look at ways of improving the economic, social, educational and general well-being of all older people and our children and families.

The election of Jack and Waite means that the Local 1245 Retirees Club will be well-represented within the Congress. Both of these senior activists volunteer many hours and days working hard on behalf of Local 1245 retirees and other seniors. Both have won respect and appreciation from other union and senior groups for their work.

Local 1245 members and retirees are truly fortunate to have such outstanding people representing our union and Retirees Club.

One of the highlights of the convention was the spirited speech by

George Kourpias, president of the newly-formed Alliance for Retired Americans. Brother Kourpias brings a lifelong commitment to the causes of workers and retirees in his role as president of the new organization. In his previous positions—as president of the National Council of Senior Citizens and as president of the International Association of Machinists and Aerospace Workers—Kourpias worked to promote and mobilize programs and legislation that significantly improved the quality of life for all Americans. It was certainly a joy to listen to an old-fashioned “in your face” labor speech.

On April 28, Local 1245 retirees and spouses joined other union retirees at the Santa Clara County FORUM annual barbecue and political rally held at the Machinists hall in Sunnyvale. Representatives from the state legislature and US Congress gave speeches and participated in question and answer sessions with the seniors attending.

It was interesting to note that the majority of the questions for the state

legislators involved the energy mess in California. It is also interesting to note that everybody knew what caused the problem, but none of the legislators have a solution.

The questions for the members of Congress dealt with Medicare, Social Security, prescription drug program and a patients’ bill of rights. I was extremely impressed by the comments of Congress Members Mike Honda and Zoe Lofgren on Social Security and Medicare. I will have more news from this valuable convention next month.

Keep the faith!

Orv Owen is a former Assistant Business Manager for Local 1245.



Make a Date...

The Local 1245 Retiree Club invites you to join us for companionship, discussion and projects. Current meeting locations are:

East Bay Chapter: meets 2nd Thursday each month, 10 a.m., at Local 1245 headquarters, 3063 Citrus Circle, Walnut Creek, CA.

San Jose Chapter: meets 1st Thursday each month, 10 a.m., at Local 332, 1870 Stone Ave., San Jose.

Tabulating the surveys



Eric Wolfe

Business Manager Jack McNally met with members of the San Jose and East Bay chapters of the Local 1245 Retirees Club recently when the retirees came to union headquarters to begin tabulating the results of the Retiree Survey that was conducted over the winter. The survey drew a huge response, with nearly 2,000 surveys being completed and returned by Local 1245 retirees or their spouses. The tabulation process is continuing.

Congratulations!

The Local 1245 Retirees Club congratulates these recently-retired members of the union. We invite you to participate in—or start!—a Retirees Club chapter in your area.

- | | |
|---|---|
| Marlin Keller, 28 years
Chico, CA | Jerald Wallace, 35 years
Grass Valley, CA |
| Doris Lawrence, 31 years
Vacaville, CA | Euclid Whittaker, 31 years
Ceres, CA |
| Peter Lew, 27 years
Newark, CA | Virginia Coffin, 21 years
Walnut Creek, CA |
| Francis Liston, 31 years
Modesto, CA | Vincent Piazza, 35 years
Santa Monica, CA |
| Augustine Losada, 20 years
Santa Maria, CA | Carl Abram, 32 years
Oakland, CA |
| Raymond Macias, 38 years
Livermore, CA | Teresita Alba, 25 years
Daly City, CA |
| David McDermott, 33 years
Antioch, CA | John Bethke, 16 years
Camino, CA |
| Alvia Myles, 32 years
Sacramento, CA | James Brewster, 34 years
Jamestown, CA |
| Kenneth Rawles, 36 years
Santa Rosa, CA | Garry Burley, 35 years
Granite Bay, CA |
| Kirk Schmidt, 34 years
Potten Valley, CA | Norman Covert, 35 years
Atwater, CA |
| Kent Tweedy, 36 years
Silverdale, WA | Gilbert De a Rosa, 33 years
San Jose, CA |

Table Mountain crew mobilizes for transformer repair

Story by Mike Hamm
Photos by Paul Collin



Mike Hamm and Jay Hapitan enter the bad unit to replace blown insulator from inside transformer.



Substation Maintenance Clerk Janet Lauff played a central role in the restoration effort, keeping materials and supplies flowing despite PG&E's bankruptcy.



Ron Fargen and Joe Velasquez uncrating new insulation for installation.

On March 28 a 500KV transformer erupted in flames after an apparent bushing failure at Table Mountain substation, south of Chico, Ca. The whole maintenance crew was called in to place the B-Phase transformer back in service. It had been sitting idle while the spare was in the B-Phase position. Restoring the bank to service took approximately 24 hours.

After the bank was restored to service, we began the lengthy process of repairing the Spare Phase transformer. The process began with isolating all three phases of the 500KV transformer bank from any possible source of electricity and then grounding these points. The next step was to remove the high side feeder cables, the low side feeder cables and the tertiary cable from the bad phase and transfer them through what is called a "Jack Bus" to the waiting B-Phase transformer.

After testing to prove no other phases of the transformer bank were damaged and that all connections were proper and in phase, the bank was then placed back in service. All the cables were quite large and required a large boom and basket truck to move them from one unit to another—making for a

slow process.

The first step in repairing the bad unit was to drain the 26,500 gallons of transformer oil and store it in waiting tankers. The transformer was backfilled with dry breathable air.

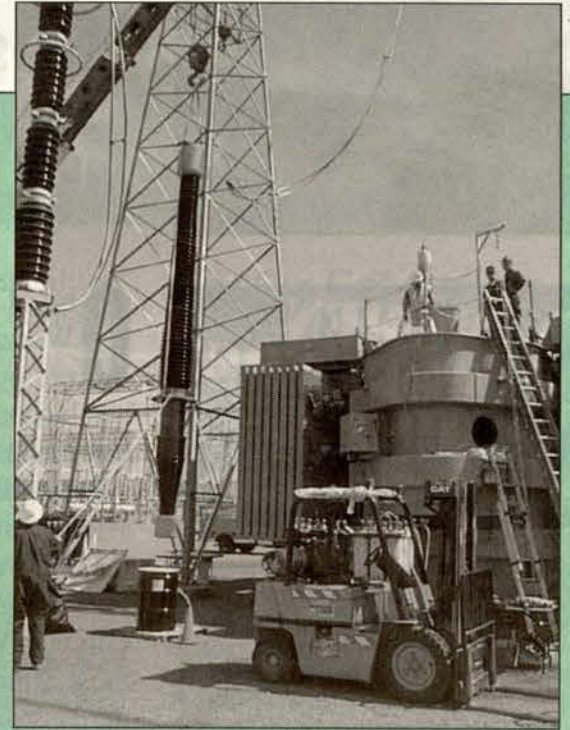
The breathable air serves two purposes: it keeps the core of the unit from becoming wet and eliminates any harmful gasses present so that personnel may safely enter the unit.

The next step was to open the manhole for entry. Prior to entry to the faulty unit, a safety line was attached to the employee and to a retrieval tripod. The air within the transformer was constantly monitored for the safety of the employees. The employees then entered the transformer through a manhole nearest the affected bushing and removed the connections inside the transformer. Employees outside the unit removed the cables to the top of the bushing.

The bushing was then unbolted from the top of the transformer and a large crane was brought into position to lift the bushing with slings. The bushing was carefully lifted out and brought to the ground.

The process was then reversed to install the new bushing. We changed the blown 230KV bushing. We also changed the

Joe Velasquez and George Murillo place oxygen and gas monitoring gear in position.



500KV bushing and the lightning arrester. Both had been damaged by flying porcelain in the initial explosion and fire of the 230KV bushing. The 500KV bushing is 60 feet long and weighs 6,000 pounds. The 230KV bushing is 30 feet long and weighs 4,000 pounds.

After repairs were made to the damaged unit and all manholes were back in place, the crew pulled a vacuum on the unit to remove any residual or introduced moisture. This was done with the use of a vacuum pump over a 24-hour period.

Next the unit was filled with dry nitrogen and allowed to sit for another 24 hours. Then the moisture inside the transformer was measured. A 500KV transformer may have no more than 1/2 of one percent moisture.

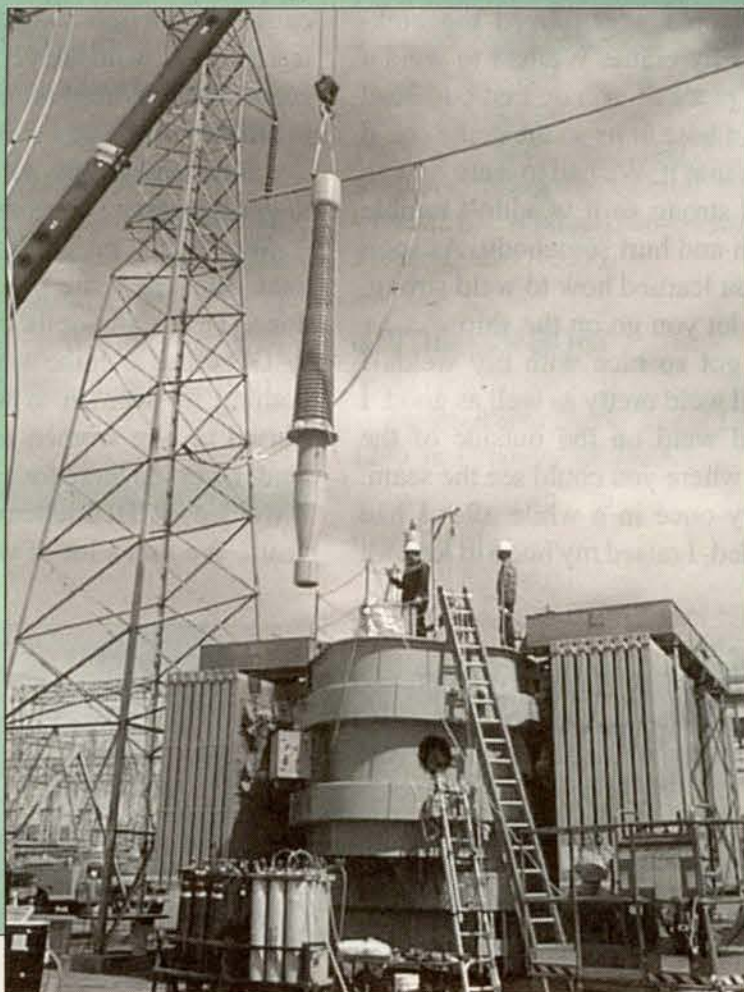
When the transformer was ready to be filled, it was done through a special unit that removes moisture from the oil while heating it to 180 degrees Fahrenheit. This procedure can take a week or more.

Once the oil was replaced, the transformer was thoroughly tested to prove it was ready for service.

Of course there are many other tasks associated with restoration of a 500KV bank, but in this article I have attempted to highlight a few of the main ones.

Mike Hamm is a Substation Electrician. Paul Collin is an M&C Engineer.

Jim Habe and Ron Fargen install new insulator.



Local 1245 members who worked on the Table Mountain project:

Wayne DeVoll	Janet Lauff	George Murillo
Ron Fargen	Gene Lemasters	Mark Schmeck
Jim Habe	Jay Llapitan	Dave Sinclair
Mike Hamm	Bill McNabb	Joe Velasquez



'Rosie' Memorial dedicated in Richmond

WOMEN WORKERS' HISTORY

General Strike (Part 2)

ILGWU officials expected that maybe 3,000 shirtwaist workers would join the general strike. The morning after the Nov. 22, 1909 meeting in Cooper Union (see last month's Utility Reporter), 15,000 workers, many teenage girls, walked off the job. Only a few had been union members. By day's end more than 20,000 workers from 500 garment shops were on strike for union recognition, a union shop and higher wages.



Strike meetings were conducted in three languages—English, Yiddish and Italian. The (all-male) union staff was too small to cope, so rank-and-file strikers, allies from the Women's Trade Union League and socialist women took over the day-to-day operation of the strike, run out of 20 halls spread over New York's garment district.

Picketing continued through the winter. Strikers braved harsh winds and snow, brutal police, and thugs hired to break up the picket lines. By standing up to the "gorillas" hired by the boss, the Switski sisters were credited with finally forcing their employer to settle. In 13 weeks more than 600 young women were arrested. Judges were viciously anti-union; one told a young woman: "You are on strike against God." Many young women showed great bravery; one 16-year-old was badly beaten by her father and brothers but still refused to scab.

The strikers rejected an offer in December because it did not include the union shop. But as the strike dragged on through January, the ILGWU settled with some large shops without the union shop or union recognition. The strike was declared over on Feb. 15, 1910 with many issues unresolved. Nevertheless, the more than 20,000 women workers had shown remarkable solidarity and courage. That proved to be their greatest achievement.

One of the enduring legends of World War II is a woman in a red polka-dot bandana flexing her biceps and proclaiming: "We Can Do It!"

Rosie the Riveter is the name affectionately given to some six million women who went to work in blue collar jobs to assist America's efforts in World War II. Among the most famous of these efforts was the construction of 747 Liberty ships at the Kaiser Shipyards in Richmond, Ca.

On March 27, Richmond attracted 400 students, union members and others who celebrated the wartime Rosies with the dedication of the Rosie the Riveter Memorial. Several of the original wartime Rosies were on hand, as were about three dozen of today's tradeswomen, who embody the "Can Do" spirit of their wartime predecessors.

"People came from all different parts of the country," to work at the shipyards, said Kathleen Rupley, curator for the Richmond Museum of History. "People who had never built a ship, who had never worked in industry, all of a sudden learned to work as a team to build a ship."

Some of their memories appear in this and an upcoming issue of Utility Reporter.



Ludie Mitchell

The first thing I did in the shipyards was as a laborer sweeping down the decks. We swept with brooms. We did that for a few weeks and then they were looking for women welders. So I went to welding school. I had seen the guys doing it.

At school I was sitting in there crying because I didn't know what I was doing. And then the man who ran the school came by and said, "Oh please don't do that. You have to learn. Just look right here." He showed me how to set the machine. He showed me how to hold my hand a certain distance from the metal. After awhile I had it.

They had us weld with the flangers first of all. Flangers were the people who moved the bulkheads by crane. We had to weld a little piece of iron on that bulkhead with a hole in its so the crane could hook into it. We had to learn how to weld strong so it wouldn't tumble down and hurt somebody. As soon as you learned how to weld strong, they let you go on the ship.

I got so nice with my welds I could weld pretty as well as good. I could weld on the outside of the ship where you could see the seam. Every once in a while after I had welded, I raised my hood to look all



Richmond Welders

around to see if anybody was looking.

Lucy Cortez, welder

I liked the welding right away. I caught onto it right away. We had to learn how to weld the vertical, horizontal and overhead seams. We had to learn everything.

I liked the money, too. We used to get the same wages as the men.

We didn't think about patriotism. We knew the job had to be done. That's all we thought about.

Of course after the war there was nothing for women to weld. They started to hire women at Mare Island. I worked there for a few years. I welded at Bethlehem Steel 25 years. We had a lot of work.



Left: Wartime Rosie Hazel Smith, far left, with three other women who worked at the Kaiser Plate Shop Tool Room in Richmond.

Right: Lucy Cortez, 83, holds a photo of herself working as a welder in Richmond shipyards during World War II.

Courtesy of the Family of Margaret Fong

Katy Raddatz, San Francisco Examiner



By the Local 1245
Safety Committee



Fix Workers Comp system

California's workers compensation system is damaged, and Senate Bill 71 would at least begin the job of fixing it.

The problem is real. Stagnated wage replacement and low rates of permanent partial disability benefits jeopardize California's economy. These inadequate, out-of-date benefits cost workers their health, their homes, and opportunities to transition back into productive participation in the workforce.

California's economy can't afford to lose skilled, experienced workers to occupational injury.

Each year 800,000 California workers experience a workplace injury or illness. One hundred fifty thousand injured workers file for temporary disability and 130,000 file for permanent disability under the workers compensation system, the sole remedy for workplace injuries.

Unlike victims of non-industrial accidents, injured workers cannot sue.

According to the RAND Institute for Civil Justice report, Compensating Permanent Workplace Injuries, all injured workers experience significant wage loss. California's current benefits are grossly inadequate for workers with both temporary and permanent disabilities.

For most permanently injured workers, the maximum weekly benefit has been frozen for 18 years. In fact, California's benefits rank among the lowest in the nation. Most injured workers with limited partial permanent disability ratings end up losing 30% of their wages, yet benefits replace only 12%.

The first priority, of course, must be to prevent injuries by strengthening health and safety programs. California needs to bring its benefits up to national standards. The state could significantly increase benefits by indexing temporary disability benefits to the state's average weekly wage.

For most permanently injured workers, the maximum weekly benefit has been frozen for 18 years.

Listen up! – hearing hints

Hearing loss can result from a single event, such as an explosion or an unusually loud noise.

It can also be caused by repeated exposure to certain noise levels, such as working with power and hand tools for many years without hearing protection. A noise is too loud if:

- You have to raise your voice to be heard.
- You cannot hear someone less than two feet away.
- After leaving a noisy area

people's speech seems muffled or dull.

- Your ears are ringing or you feel pain in your ears.

Protect your hearing. If you work in a noisy environment, or if you use a power lawnmower or power tools at home, wear ear plugs or ear muffs.

It is also a good idea to have your hearing checked on a regular basis.

You're going to need your hearing later on—so protect it now!

What's the forecast?

You may not be a weather forecaster. But your forecast can be just as important.

When you planning—or in the middle of—a job or task, look ahead and forecast the many hazards and

obstacles that could be next.

Don't let trouble find you.

Gather information from different sources. Others around you may be able to help.



"I was going to say you have a year to live, but your HMO will only allow six months."

Current members of the Local 1245 Safety Committee are: Stoney Burke, Alameda Power & Telecommunications; Keith Hopp, Pacific Gas & Electric; Ralph Muraca, City of Santa Clara; Mark Rose, Davey Tree; Al White, Pacific Gas & Electric; Rod Wright, Modesto Irrigation District; and Assistant Business Manager Art Murray.



Ukiah, Ca.
March 23, 2001



45 Years: G. B. Demits is presented with award by Assistant Business Manager Bob Choate.



35 Years: Ralph Freeland Jr. is congratulated by Assistant Business Manager Bob Choate.



40 Years: Victor Donchenko Jr. is presented with plaque by Assistant Business Manager Bob Choate.



30 Years: Doug Patten and Gary Silver are congratulated by Assistant Business Manager Bob Choate.



25 Years: William Dawson is congratulated by Assistant Business Manager Bob Choate.



20 Years: Lawrence Wise, Jody Lutz, Dorleen McBride, Janise Ramos, being congratulated by Assistant Business Manager Bob Choate.

The Honorees

30 YEARS

Holst, Lewis
 Hagen, Sama M.
 Jones, Edward L.
 Lingner, Ona D.
 McDonald, John Jr.
 Otte, Wanda J.
 Patten, Doug
 Perez, John M.
 Robison, Dennis P.
 Silver, Gary M.

25 YEARS

Austin, Edward
 Dawson, William J.
 Fernandez, Gary H.

20 YEARS

Champagne, Gary E.
 Curreri, Thomas C.
 Dearman, Larry G.
 Devito, Robert
 Fedornak, Stanley R.
 Kohlross, Karl P.
 Lutz, Jody A.
 McBride, Dorleen
 Mitchelol, Robert P.
 Ramos, Janise C.
 Scicchetti, Pete J.
 Skachenko, Larry A.
 Tkachenko, Norman Jr.
 Wise, Lawrence

Candidates for Office IBEW Local 1245

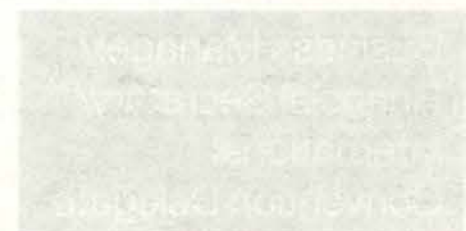
◆ Officers & Executive Board

◆ Advisory Council Members

◆ International Convention Delegates

Local union elections for the above-named positions will be conducted by mail ballots during the month of June. Local 1245 members should receive their ballots around June 1st. One ballot will be for Local union offices. A second ballot will be for Delegates to the International Convention of the IBEW. The ballots will contain instructions on how to fill them out. Please follow the instructions carefully. A return envelope will be provided for you to use to return the ballot. Completed ballots must be received at P. O. Box 5008 in Walnut Creek by 10 a.m. on June 22nd in order to be valid.

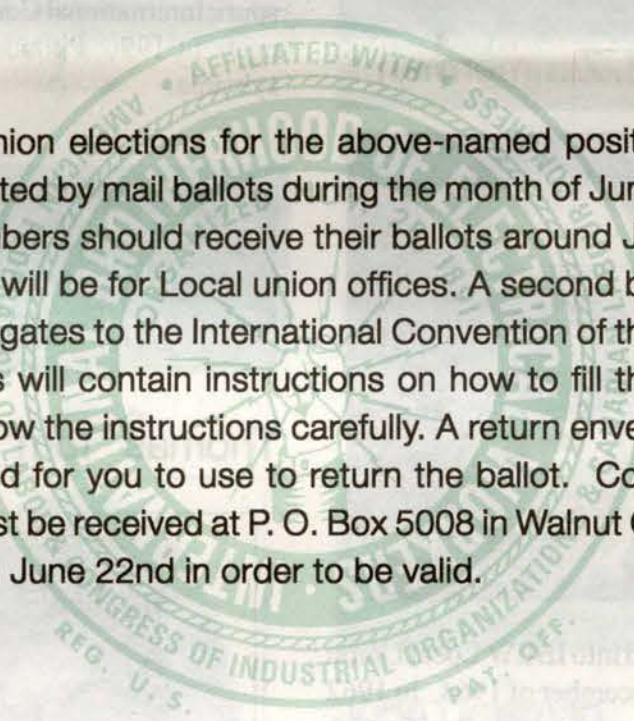
Candidate resumes begin on the next page.



Richard Bentler

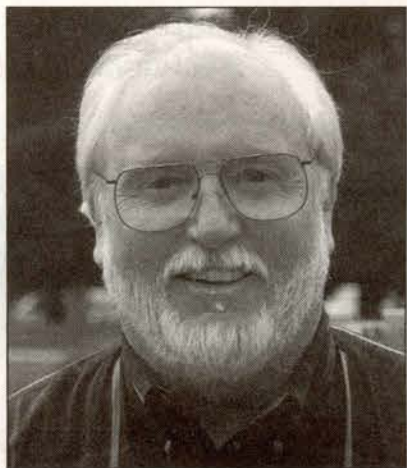


Jack McNally



**Business Manager/
Financial Secretary/
International
Convention Delegate**

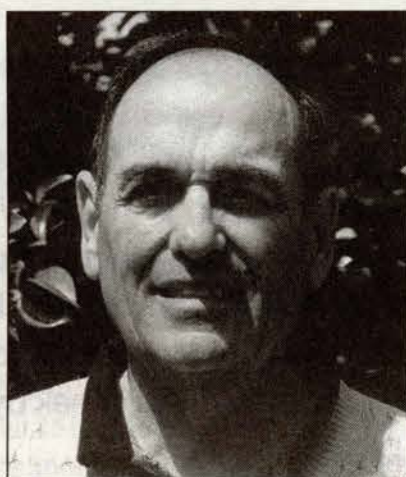
Jack McNally



Initiated into IBEW Local Union 1245 in October 1960; Classification: Business Manger/Financial Secretary. Employed as a Journeyman Lineman and Electric Crew Foreman for Pacific Gas and Electric Company. Served as a Business Representative and as an Assistant Business Manager from 1968 to 1978. Was elected as a Business Manger/Financial Secretary in 1980 and has been re-elected in each local union election since. Currently serves as Chairman of the California Coalition of Utility Employees who engages in the process before the California Public Utilities Commission and the California State Legislature protecting and defending the rights of utility employees. Has developed arguments and testified before the California Public Utilities Commission defending the rights of free collective bargaining. Has presented testimony to the California Legislature, promoting and defending the rights and importance of utility employees through the utility restructuring process. Currently serves as Vice President and Executive Council Member of the California Labor Federation AFL-CIO and was first elected in 1980. Currently serves as Executive Board Member of the California State Association of Electrical Workers. Currently serves as a member of the Board of Directors of

the California Foundation on the Environment and the Economy, and as a member of the Advisory Committee for the Center for Labor Research and Education at the University of California at Berkeley. Serves as IBEW Member of the Steering Committee to the Inter-Union Gas Conference and currently serves on the IBEW Committee on Electric Utility Restructuring. Also serves on the IBEW Outside Line Task Force. Previously served as a Governing Member of the California Independent System Operator (ISO). Serves as a member of the Board of Directors of the Federal Reserve Bank of San Francisco, filling the position representing labor and consumers. Currently serves as a Chairman of the IBEW International Executive Council. Currently is a member of the Coalition of Labor Union Women (CLUW), the Electrical Workers Minority Caucus (EWMC), and the Asian Pacific American Labor Alliance (APALA).

Perry M. Zimmerman

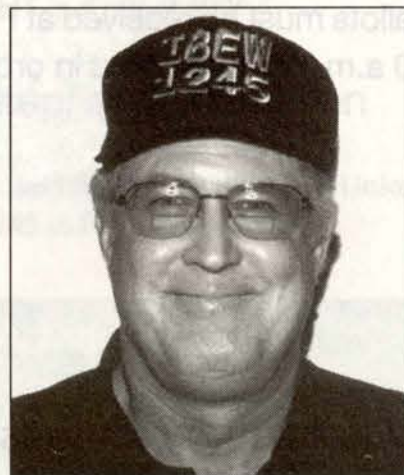


Initiated into IBEW Local Union 1245 in December of 1964. In 1962 began his career with Pacific Gas and Electric Company in Sacramento Division. Was IBEW Shop Steward Representing PG&E employees in Sacramento Division from 1975 to 1981; Advisory Councilman for IBEW Local 1245 in 1980 and went on staff of IBEW 1245 as a Business Representative in 1981. Assignments with IBEW prior to his retirement on February 11, 2000: Business Representative for PG&E Sacramento Division, August 1981 to March 1984; Business Representa-

tive for Citizens Communication, Sacramento Regional Transit and other Irrigation Districts, March 1984 to September 1984; Business Representative for Local 1245-North Bay Division, September 1984 to July 1987; Business Representative for Local 1245-San Francisco Division, July 1987 to July 1988; Relief Business Representative supporting IBEW area wide, July 1988 to January 1989; Business Representative for Local 1245-East Bay Division January 1989 to January 1990; Business Representative for Sacramento Municipal Utility District (SMUD), January 1990 to June 1992; Assistant Business Manager IBEW Local 1245, June 1992 to February 2000; Sacramento County Labor Council Delegate, August 1981 to September 1984; North Bay Labor Council Delegate, September 1984 to September 1987; International Convention Delegate in 1986, Toronto, Canada; International Convention Delegate in 1991, St. Louis, Missouri; International Convention Delegate in 1996, Philadelphia, Pennsylvania.

**President/
International
Convention Delegate**

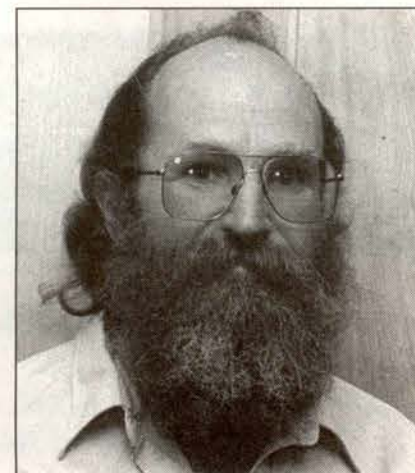
Thomas "Tom" Mapp



Initiated into IBEW Local Union 1245 in May of 1985. Member of Unit 4912, Riverside; Classification: Journeyman Lineman. Initiated into IBEW Local 1001, 1970; Shop Steward; Executive Committee Unit

4912 member, 2000 to present; Completed Federal OSHA 1910.269 High Voltage Electrical Safety Training, 1995 and Joint Apprenticeship and Training Committee.

Howard N. Stiefer



Initiated into IBEW Local Union 1245 in November of 1967. Member of Unit 3712, Santa Rosa; Classification: Troublemaker; Currently serving as IBEW Local Union 1245 President and Chairman of the Executive Board; Chairman of the Local Union Advisory Council, member of the Board of Trustees for the Local Union 1245 Pension Plan; Chairman of the Board of Directors of IBEW Local Union 1245 Energy Workers Center, Inc.; Served as Local Union 1245 Vice President, 1978-1979; Northern Area Executive Board Member, 1977-1978; Served as Chairman of Unit 3712 Santa Rosa, 1977-1986; Shop Steward in North Bay Division of PG&E since 1975; Delegate and Co-Chairman of the Local Union 1245 Delegation to the IBEW 32nd International Convention, 1982; 33rd IBEW International Convention, 1986; 34th IBEW International Convention, 1991; 35th International Convention, 1996; Delegate to the IBEW Ninth District Progress Meetings, 1977, 1979, 1981, 1984, 1989-1992, 1994, 1999 and 2000; Delegate to the IBEW Annual Regional Utility Conference, 1979, 1981, 1983, 1985, 1986, 1989-1992, 1994, 1995, 1996, 2000 and 2001; Delegate to the Inter-Union Gas Conference, 1978, 1982, 1984, 1986, 1988, 1991, 1999 and 2000; Delegate to the California State Association of Electrical Worker's

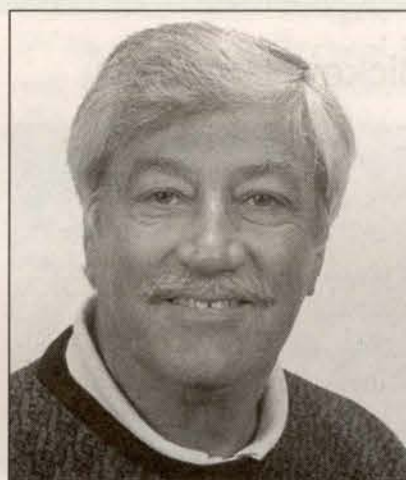
meeting, 1977, 1979, 1981, 1988, 1990, 1999 and 2000; Delegate to the California State Federation of Labor AFL-CIO Convention 1978, 1982, 1984, 1986, 1988, 1990, 1992 and 1994; Delegate to the Nevada State Federation of Labor AFL-CIO 23rd Convention, 1979 and 2000; Delegate to the Nevada State Federation of Labor AFL-CIO Pre-COPE Convention, 1981 and 2000; Delegate to the California State Federation of Labor AFL-CIO Pre-Primary COPE Convention, 1978, 1982, 1992, 1994 and 2000; Delegate to the California State Federation of Labor AFL-CIO Joint Legislative Conference, 1979, 1982, 1984, 1986, 1990, 1992, 1994, 2000 and 2001; Delegate to the AFL-CIO Regional Conference Seattle, Washington, 1982; Member of the Western States Labor Management Public Affairs Committee (LAMPAC), 1981-2001; Delegate to the Joint Executive Conference of the Northern California Electrical Workers, 1976-1979, 1981-1984, 1988-1990, 1999 and 2000; Attended the International Foundation of Employee Benefit Plans, Communications Institute, 1979; International Foundation of Employee Benefit Plans Washington D.C. Legislative Update, 1979, 1981, 1984, 1986-1988 and 2000; International Foundation of Employee Benefit Plans, Pension Trustee Training Institute, 1979 and 1981; International Foundation of Employee Benefit Plans, 28th, 29th, 30th, 40th, 45th and 46th Annual Administrators Educational Program; Certificate of Completion for each Institute; Attended Shop Stewards Training, 1975; University of California Certificate Completion from the Center for Labor Research and Education; Institute of Industrial Relations for Psychology of Leadership, 1978; Labor Law Certificate from the University of California Labor Research Center, 1978, both sponsored by Local Union 1245; Pacific Gas & Electric Company, General Negotiating Committee, 1977; Assigned to work on Pacific Gas & Electric Company Pension Plan language, 1978; Temporary Union Business Representative, 1977-1979 and 1983; Member of

the Local Union Wage and Benefit Committee, 1977-1978; Chairman of the Local Union Wage and Benefit Committee, 1981-2001; Chairman of the Local Union Political Education Committee, 1978-1979; Member of the Pacific Gas & Electric Company General Negotiating Committee, 1983; Member of the Geysers Access Negotiation Committee, 1982 and 1983; Member of the International Foundation of Employee Benefits Plans, 1978-1979 and 1981-2001; Member of the Board of Directors of IBEW Local Union 1245 Energy Workers Center, Inc., 1977-1979; Chairman of Energy Workers, Inc., 1981-2001; Member of the Local Union Pension Plan Board of Trustees, 1977-1979 and 1981-2001; Member of the Lineman's Overview Committee; Attended National Lineman's Rodeo Kansas City, Missouri, 1993; Ex-Officio Member of Local Union Political Education Committee, 1981-2001; Ex-Officio Member Local Union Ways and Means Committee, 1981-2001; Ex-Officio Member Local Union Safety Committee, 1981-2001; Ex-Officio Member of all Negotiating Committees, 1981 to present; Serving as President of Local Union 1245, 1981 to present; Responsible for and has appointed all Local Union Committees, 1981 to present; Appointed all delegates to Central Labor Councils, 1981 to present; Appointed all delegates to conferences and conventions, 1981 to present; Chairman and Hearing Officer for Local Union 1245 Trial Board; Member of the Pacific Gas & Electric Company Joint Labor-Management Committee, 1981 to present; served on several Ballot committees, 1979-1981; Received IBEW Life Saving Award, 1974; Host and Instructor for Local Union Clerical Conference, 1983; Host for Local Union Leadership Conference, 1984 and 1999; Instructor for Unit Chairman Workshop; Instructor for Parliamentary Procedure Workshop; Delegate to the Minority Caucus, 1999 Seattle, Washington; Delegate to the Consumer Federation of California Convention, 2000; Delegate to IBEW Political Conference Washington, D.C., 2000; Delegate to

IBEW Women's Conference Washington, D.C., 2000; Represented Local Union 1245 at the retirement dinner for International President J.J. Barry in Washington, D.C. in 2001.

Vice President

Jim "Mac" McCauley



Initiated into IBEW Local Union 1245 in March of 1960. Member of Unit 2318, Richmond East Bay Division; Classification: Underground Construction Foreman. Employed by PG&E Richmond; Elected as Vice President of the Executive Board in 1989 and has been re-elected in each Local Union election since; Chairperson pro-tem of the Advisory Board; Served as Executive Board member representing Central Area, 1986-1989; Member of the Board of Directors of the IBEW Local Union 1245 Energy Workers Center, 1986 to present; East Bay Division Advisory Council member 1974-1977; Shop Steward in East Bay Division 1970 to present; and Chairperson of PG&E New Business Competitive Pilot program, 1996 to present; IBEW Construction Representative for the Gas & Electric Rodeo, 1995 to present; Chairperson, Vice-Chairperson and Executive Committee member of East Bay Unit 2311; Member of East Bay Division Joint Grievance Committee; Area 2 Labor-Management Committee; Local Union Political Action Committee, 1986-1998;

Chairperson of Local Union Political Action Committee, 1989 to present; Member of the Alameda and Contra Costa Central Labor Councils; Served on the Local Union Ballot Committee, 1972; Local Union PG&E Wage and Contract Committee, 1973; Local Union PG&E Wage Committees, 1974-1975; Attended Unit Officer Training Conferences, 1971, 1974, 1977, 1989, 1992 and 1995; Served as an instructor of the Chairperson's Workshop; Long Island Fact Finding meeting in New York, 1973; Clerical Conference, 1974; Women in the Workplace Conference, 1992; Inter-Union Gas Conference, 1975, 1977-1979, 1987-2000; Chaired Gas Construction Workshop, 1997-2000; Served as Secretary of the Gas Distribution Workshop and the IBEW Caucus, 1990-2000; Served as IBEW's representative on the Steering Committee to the Inter-Union Gas Conference, 1998; Attended the California AFL-CIO Legislative Conferences, 1978-1979, 1986-2000; Pre-primary COPE Convention, 1979, 1986-2000; California State Federation of Labor AFL-CIO Convention, 1980, 1986-2000; IBEW Utility Conferences, 1978-1979, 1988-2000; Attended IBEW Ninth District Progress Meetings, 1978-1979, 1987-1991, 1993-2000; Attended Labor Management Public Affairs Committee, 1988, 1999; Attended Consumer Affairs Conference, 1999; Delegate to the California State Association of Electrical Workers meeting, 1978, 1994, 1998-2000; Attended seminars and conferences dealing with health and safety in the workplace (OSHA, Cal/OSHA, EEOC and FEPC); Delegate to the Administrative Law Judge Conference, 1979; Delegate to the 1982 International Convention, Los Angeles; International Convention Toronto, Canada, 1986; 100th IBEW International Convention St. Louis, 1991; International Convention Philadelphia, 1996; Member of the Coalition of Labor Union Women (CLUW); Business Representative assigned to East Bay Division, Fremont Gas Meter Shop,

Jim McCauley, cont.

Material Control, Emeryville, CATV and X-Ray Engineering; Served as a member and spokesperson for Local Union Tele-vue Systems Negotiating Committee, 1978; Local Union Bay Cablevision Negotiating Committee, 1978; Local Union Concord TV Cable Negotiating Committee, 1978; X-Ray Engineering Committee, 1978; PG&E Gas Meter Shop Re-rate Committee, 1979; PG&E Gas Department Negotiating Committee, 1980; East Bay Division Joint Grievance Committee; Materials Distribution Joint Grievance Committee; Gas Meter Shop Labor/Management meetings; member and co-spokesperson of Local Union Teleprompter Properties Negotiating Committee, 1980; Served as a delegate to the Alameda County Central Labor Council; delegate and Executive Board member of the Contra Costa Central Labor Council, and participated in numerous picket lines and other demonstrations for the Alameda and Contra Costa Labor Councils; Organized curriculum and presented to the East Bay Shop Stewards program; Completed three day workshop on AFL-CIO one on one program; completed Labor Communications, COLA, Health and Safety, Labor Law, Labor Negotiations and Psychology of Union Labor Leaders courses from the Institute of Industrial Relations, University of California, Berkeley; Organizing and Communications for Labor Leader courses from Merritt College; Collective Bargaining, Labor Economics and Labor History courses from Los Medanos College; Guest speaker on behalf of Local Union 1245 at Chabot College, Diablo Valley College, Merritt College, and High Schools in the Bay Area; Also a certified Union Counselor for Alameda Central Labor Council; Participated on behalf of Local Union 1245 at career night at Bay Area high schools; Organized the first three IBEW Local Union 1245 softball tournaments and picnics; co-chair of the 2000 IBEW golf tournament; Represented Local Union 1245 on Central Division Substance Abuse program, 1989-

1992; Received IBEW Life Saving Award, 2000.

James Walpole

Initiated into IBEW Local Union 1245 in February of 1984.

Recording Secretary

Mickey Harrington



Initiated into IBEW Local Union 1245 in March of 1960. Member of Unit 3417, Paradise; Classification: President of Butte/Glenn Central Labor Council from 1997 to present. Offices Held: Shop Steward GC, 1962-1968; Unit 3815 Vice Chairman GC-Davis, 1966-1968; Executive Board Member At Large, 1967-1968; Local Union Ways and Means Committee, 1967-1968; Business Representative and Organizer Local 1245, 1968-1971; Public Employees Council, 1968-1972; Local Union Recording Secretary, 1971-1974; Secretary to the Policy and Resolution, Staff Benefit Committee, Political Action Committee, Chairman Local Union Ways and Means Committee, 1971-1974; Unit 3815 Chairman GC Davis, 1971-1976; Unit 2815 Recorder GC Davis, 1976-1978; Business Representative and Organizer Local 1245, 1978-1999; Ballot Committee, 1966; Election Committee, 1966; GC Grievance Committee, 1966-1980; GC Line of Progression Committee,

1970-1973; GC Equipment Committee, 1970-1971; Spokesman for City of Lodi Negotiations, 1984-1985; Spokesman for Tri-Dam Negotiations, 1985-1988; Spokesman for Oakdale Irrigation District Negotiations, 1987-1989; Spokesman for South San Joaquin Irrigation District Negotiations, 1985-1987; Spokesman for Lassin MUD Negotiations, 1988-1993; Spokesman for Citizens Utilities Negotiations, 1989-1992; Spokesman for Plumas Sierra REC and Telecommunications Negotiations, 1991-1994, 1996-1998; Spokesman for Chambers CATV Negotiations, 1990-1993; IBEW International Convention, 1974, 1978, 1982, 1986, 1991 and 1996; National AFL-CIO Convention, 1985, 1987, 1989, 1993, 1995, 1997 and 1999; California State AFL-CIO Convention, 1968, 1972, 1984, 1986, 1988, 1990, 1992, 1994, 1996, 1998, 2000 and served as member of the Credentials Committee from 1984; Nevada State AFL-CIO Convention, 1972-1984; California State Association of Electrical Workers, 1972, 1978; Ninth District Progress Meeting, 1968, 1970, 1980 and 1991; IBEW Utility Conference 1973 and 1985; Inter-Union Gas Conference, 1974, 1998; California State COPE Pre-Primary Convention, 1972, 1982, 1984, 1986, 1988, 1990, 1992, 1994, 1996, 1998, 2000; San Joaquin/Calaveras Labor Council, 1980-1990; Telephone Conference, 1984, 1986, 1988, 1990 and 1992; California State Legislative Conference, 1972, 1982-2001; Secretary of San Joaquin/Calaveras Central Labor Council, 1984-1990; San Joaquin/Calaveras Labor Council on Political Education, 1980-1990; Butte/Glen Central Labor Council, 1990 to present-serving as President from 1997 to present; Konocti Leadership Conference, 1996; Leadership Conference, 1971, 1974, 1977, 1980, 1983, 1986, 1989, 1992 and 1996; Dr. Morris Hurley's Management and Industrial Relation Program; Attended UC classes in Public-Private Sector Negotiations, Communications, Cost of Living Adjustments, Labor Law, Bargaining Techniques, Interest Arbitration, Training Union Leaders, Psychology of

Leadership Workshop and Mutual Gains Bargaining.

Ed Mallory

Initiated into IBEW Local Union 1245 in May of 1966. Member of Unit 1112, Bakersfield; Classification: Electrical Technician. Shop Steward, 1977 to present; Local 1245 Political Education Committee, 1994 to present; Delegate to Kern-Inyo-Mono Counties Central Labor Council, 1986 to present; E-Board of Kern-Inyo-Mono Counties Central Labor Council, 1996 to present; Unit 1112 Chairman, 1977-1986; Local 1245 Treasurer, 1989-1993; Local 1245 Recording Secretary, 1993 to present; Shop Steward Conferences, 1966 to present; Ninth District Progress Meetings Convention, 1989-1992, 1995-1997 and 2000; IBEW Utility Conference, 1990-1993, 1995-1996, 1999 and 2001; California Federation of Labor Legislature Conference, 1994-2001; California Federation of Labor Constitutional Convention, 1994, 1996, 1998 and 2000; California Federation of Labor Pre-Primary Convention, 1994, 1996, 1998 and 2000; Inter-Union Gas Workers Conference, 1997 and 2000.

Treasurer

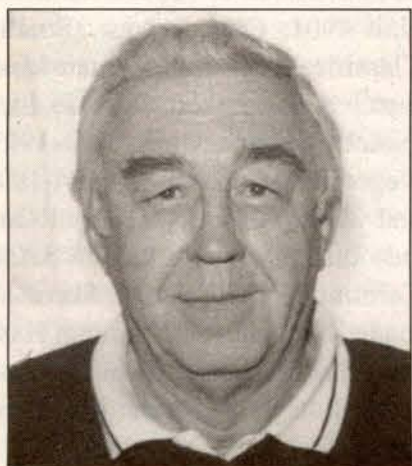
Gregory D. Brewer



Initiated into IBEW Local Union 1245 in August of 1991. Member of

Unit 4912, Riverside Outside Line; Classification: Journeyman Lineman. Shop Steward, 1997 to present; Local Unit Executive Committee Member and Sergeant-At-Arms Unit 4912.

Michael J. Davis



Initiated into IBEW Local Union 1245 in June of 1967. Member of Unit 1501; Classification: System Operator. Shop Steward, 1969 to present. Southern Area Executive Board Member, 1983-1995; Served as Treasurer, 1995 to present; Delegate to South Bay Central Labor Council; Part of IBEW NERC System Operator Committee 1997-1998; 94-53 Committee Member.

Kip Yaughn

Initiated into IBEW Local Union 1245 in May of 1996.

**Exercise Your Rights
As A Union Member!**



**Vote
for the Candidates
of Your Choice!**

**Southern Area
Executive Board**

Christine "Chris" Habecker



Initiated into IBEW Local Union 1245 in January of 1976. Member of Unit 1111, Fresno; Classification: Operating Clerk. Executive Board Southern Area Member; Clerical-At-Large Advisory Council; Shop Steward, 1982 to present; Designated Alternate San Joaquin Valley Region Shop Steward for the Clerical Position Evaluation System; Member of "No on Prop 9" Committee; 94-53 Job Retention Subcommittee (General Rate Case), 1998; CISD Labor Management Committee Area 4, 1994; Video Display Terminal Committee (VDT), 1994; Bi-lingual Telephone Center Study Committee, 1994; IBEW Title 19 presentations to PG&E's Clerical Consolidation Impacted Members, 1993; Telephone Center Staffing Advisory Committee, 1993; Telephone Improvement Workstation Evaluation Committee, 1992; Telephone Service Study Committee (Reference LA R2-9s-120-PG&E), 1994; PG&E General Negotiating Committee, 1990; PG&E Concord Negotiating Committee, 1989; Local 1245 Election Committee; San Joaquin Division Joint Grievance Committee, 1986 to present; Appeals Procedure, 1990 to present (reference LA 90-43); Delegate, 2000; IBEW National Women's Conference in Washington D.C., 2000; IBEW Ninth District Progress Meeting in Palm Springs California, 2000; IBEW Utility Conference in St. Louis

Missouri, 1999; IBEW Ninth District Progress Meeting in Maui Hawaii, 1998; IBEW Ninth District Women's Conference and Progress Meeting in Portland Oregon, 1997; IBEW Ninth District Progress Meeting in Lake Tahoe, Nevada, 1997; IBEW National Women's Conference in Washington D.C., 1998; IBEW Utility Conference in Ft. Lauderdale Florida, 1997; IBEW Utility Conference in New Orleans, 1996; IBEW Utility Conference in Los Angeles, 1991-1992; Conference for IBEW Local 1245 Union Women in Concord California; Delegate to the 8th Annual Western Regional Summer Institute for Union Women at San Diego California, 1989; Delegate to the Women in the Workforce Conference, 1986; Appointed to attend the Labor's Victory 1998 Regional Conference in Fresno California; Delegate to the 1998 Consumer Federation of California Convention in Millbrae, California; Appointed as Delegate to the 17th Annual Western Regional Summer Institute for Union Women Conference in Berkeley, California, July 6-11, 1998; Delegate to the Central Labor Council of Fresno and Madera Counties, 1991 to present; Appointed as Trustee to the Central Labor Council of Fresno and Madera Counties, 1993-1994; Elected as Recording Secretary to the Central Labor Council of Fresno and Madera Counties, 1994-1997; Member of the Central Labor Council of Fresno and Madera Counties, 1994 to present; Participated as a "rank and file" member at the December 21, 1994 meeting with Stan Skinner; Attended numerous Shop Steward training conferences; Attended Effective Grievance Resolution Training; Chairperson of the Fresno Unit 1111 1989 to present; Advisory Council Clerical-At-Large, 1994-1995; Southern Area Executive Board Member Elected in 1995 to present.

Daniel K. Melanephy

Initiated into IBEW Local Union 1245 in December of 1970. Member of Unit 1501, San Jose; Classification: Service Operator G&E Dis-

patch. Shop Steward, Unit Chair and Unit Recorder; Advisory Council; Served on Grievance Committee and is presently on Labor Management Committee; Delegate to Santa Clara Central Labor Council; Labor study courses at San Jose City College.

**Central Area
Executive Board**

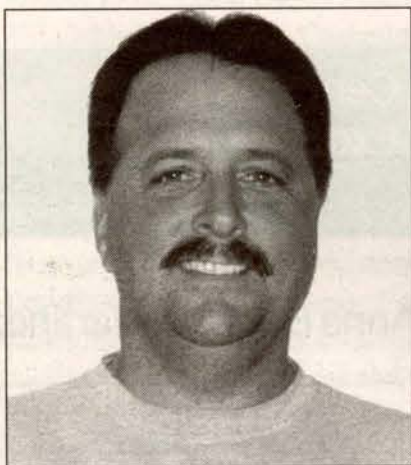
Anna Bayless-Martinez



Initiated into IBEW Local Union 1245 in August of 1980. Member of Unit 2511, Stockton; Classification: Customer Service Representative. Shop Steward, 1987 to present; Unit Recorder, 1986-1995; Unit Chairperson, 1996 to present; Central Area Executive Board, 1997 to present; Clerical Title 18 Committee, 1995; Wage Bargaining Committee, 1996; IBEW/PG&E Employee Involvement Committee; Proposition 226 and Proposition 9 Committees; GRC Committee; Stockton Division, CRC Labor Management, 1991-2000; Shop Steward Conferences; Women's Leadership Conferences, 1989, 1992 and 1996; IBEW Women's Conferences, 1990, 1991, 1999 and 2000; IBEW Utility Convention, 1998, 1999 and 2001; National CLUW Member; Stockton Central Labor Council; IBEW Ninth District Progress Meeting, 1997-2000.

Northern Area Executive Board

Michael A. Scafani



Initiated into IBEW Local Union 1245 in June of 1978. Member of Unit 3712, Santa Rosa; Classification: Fitter Gas T&D. Shop Steward, 1995 to present; Member of the General Negotiation Committee; 206/19 Subcommittee, 1999; Exhibit XVI Contracting Committee; Santa Nella Summit; Inter-Union Gas Conference, 1997; IBEW Convention, 1998; GRC Communication Committee, 1999.

Kathy F. Tindall



Initiated into IBEW Local Union 1245 in August of 1973. Member of Unit 3311, Reno; Classification: Clerical Specialist, Sierra Pacific Power Company, Reno. Currently serves as Northern Area Executive Board member for Local Union 1245; Served as Local Union Recording Secretary, 1977-1983;

Northern Area Executive Board member, 1976-1977; Served as Alternate Advisory Council Member Sierra Pacific Power Company, 1976; Formerly a Shop Steward at Sierra Pacific Power Company; Christmas Party Committee; Chairman Unit 3311 Reno, 1979; Past member of the Local Union Communications Committee; Past Secretary of the Local Union Administrative Committee; Past member of the Local Union Political Education Committee of the Executive Board; Current member of Local Union Ways and Means Executive Board Committee; Served on the 1974 Sierra Pacific Power Company Ballot Committee and was a member of the Sierra Pacific Negotiating Committee, 1975-1976; Served on Interim Negotiating Committee for Materials Services Department, 1989; Served as Secretary and a member of Local Union Advisory Council; Delegate to the IBEW Regional Utility Conference, 1980-1982, 1984, 1988-1992, 1994-1999; Delegate to California Federation Women in the Work Force Conference, 1981; Delegate California State AFL-CIO COPE Endorsement Convention, 1988; Delegate California State Legislative Conference, 1977, 1988 and 1991; Delegate to the Ninth District Progress Meetings, 1977, 1980, 1983-1986, 1988-1993, 1995-1998; Delegate to Women in the Work Force Conference, 1977-1978, 1980, 1983 and 1984; Attended the Local Union Leadership Conference 1977 and 1980; Served on the 1978 Planning Committee for Women in the Economy Conference. Delegate to California Labor Federation Pre-Primary Election Convention, 1988; Delegate to California State AFL-CIO Convention, 1986-1988; Elected delegate to the IBEW International Convention, 1978, 1982, 1986, 1991 and 1996. Delegate to Nevada State AFL-CIO Convention, 1977-1982, 1984-1997; Served as Chairman of the Union Label Committee of Nevada AFL-CIO Convention in 1978-1979; Served as Chairman of COPE Committee of Nevada State AFL-CIO Convention, 1980-1982, 1984-1997; Delegate of California Electrical Asso-

ciation, 1981; Delegate to California AFL-CIO COPE Convention, 1979; COPE Committee Chairman of Nevada AFL-CIO Candidate Endorsement Convention; IBEW Regional COPE Conference Delegate, 1980; Delegate to the Western Regional Labor Summer Institute for Union Women, 1984; Delegate Coalition of Labor Union Women National Executive Board Meetings, 1985-1998, 1999-2000; Attended and received a Certificate of Merit from the Rocky Mountain Labor School, 1985-1986; Northern Nevada Central Labor Council Coordinator for the 1985 Fourth Annual Nevada State AFL-CIO; Occupational Safety and Health Conference; Appointed to National Executive Board of the Coalition of Labor Union Women representing Nevada as State Vice-President 1983-1988; Representing the IBEW on the National Executive Board of the Coalition of Labor Union Women, 1988-1998 and 1999-2000; Elected delegate to the National CLUW Convention, 1986, 1988, 1990, 1992, 1994, 1996 and 1998; Appointed member to represent Labor on the Reno Commission for the Status of Women, 1980-1988; Instructor for October, 1985 Labor Workshop at the Truckee Meadows Community College Conference on Women, Work & Wages—The Issues of the 1980's promoting economic equality for women; Delegate to the Northern Nevada Central Labor Council and has served as Trustee, 1983-1985; Secretary-Treasurer, 1986-1998; Delegate Nevada State AFL-CIO Legislative Conference; 1989-1997; Recipient of Special COPE Volunteer in Politics VIP Award, 1988; Member of Nevada State Electrical Workers Association Board since 1980.

Executive Board Member-at-Large

Marcus A. Carrasco

Initiated into IBEW Local Union 1245 in April of 1984.

Donald J. Johnson

Initiated into IBEW Local Union 1245 in February of 1982.

Jeff Johnstone

Initiated into IBEW Local Union 1245 in March of 1969. Member of Unit 4901, Outside Line (South); Classification: Journeyman Lineman. Chairperson Outside Line (South); Shop Steward, 1975-1993; Negotiating Committee, 1994-1997 and 2000; Advisory Council Outside Line, 1995-1999; Joint Safety Committee, 1995-2001; Have attended Shop Steward training. Have served at the discretion of the Business Manager as Steward on many jobs.

John M. Mendoza

Initiated into IBEW Local Union 1245 in December of 1983.

Bill "FLA" Paulsen



Initiated into IBEW Local Union 1245 in January of 1969. Member of Unit 4911, Sacramento/Outside Line North; Classification: Journeyman/Lineman. Shop Steward, 1997 to present; Joint Outside Line Construction Committee, N.E.C.A.; Safety Committee-Northern Rep., 2000 to present; Shop Steward training Local 222, 1987 to present.

Be Sure To VOTE!

**Advisory Council:
AC Transit,
East Bay
Municipalities**

Larry Rodriquez

Initiated into IBEW Local Union 1245 in January of 1981. Member of Unit 2211, Oakland; Classification: Chief Dispatcher. Unit Recorder, 1990-1992; Unit Chairman, 1992 to present; Shop Steward, 1988 to present; Negotiating Committee, 1985, 1988, 1990, 1993, 1996 and 1999; Advisory Council, 1992 to present; Attended Public Sector Shop Steward training; Attended Unit Chairman and Recording Secretary Conference.

**Advisory Council:
CATV Operating
Companies**

No candidates.

**Advisory Council:
Citizens Utilities Co.
of California**

Tom Greer



Initiated into IBEW Local Union 1245 in August of 1996. Member of Unit 4014, Elk Grove; Classification: W/SE I&M Tech. Shop Steward, June 2000 to present; Attended

Shop Steward Conference in Sacramento, 2000.

Dave Morrison



Initiated into IBEW Local Union 1245 in May of 1979. Member of Unit 4014, Elk Grove; Classification: Cutwriter Citizens Communications. Shop Steward, 1980 to present; Unit Chairperson, 1980-1983, 1999 to present; Ad Council, 2000 to present; Safety Committee, 1987-1998; Communications Convention, February 2001; Multi Shop Steward Conferences.

**Advisory Council:
Clerical-at-Large**

Linda S. Jurado



Initiated into IBEW Local Union 1245 in January of 1982. Member of Unit 3111, Eureka; Classification: Sr. Operating Clerk. Unit Recorder Fresno, 1989-1995; Unit Recorder Eureka, 1995 to present; Election Committee, 1992; Safety Commit-

tee, 1993-1994 and 1997; Safety Action Forum, 1994; Title 18 94-53 Committee, 1996; 206/19 Displacement Presentation, 2000; Summer Regional Institute of Union Women, 1987-1988, Los Angeles/Berkeley; IBEW Tri-District Women's Issues Conference, 1990 Reno; Women's Conference, 1991-1992 Concord; Women in the Workforce Conference, 1994 Los Angeles; Delegate to Central Labor Council, Fresno/Madera 1991-1995; Ad Council Clerical-At-Large alternate; Ad Council Clerical-At-Large, 1995-1998; Delegate to International Convention, 1996 Philadelphia; Joint Grievance Training, 1997; Ad Council Clerical-At-Large, 2000 to present; Delegate to Utility Worker's Conference Reno, 2001.

**Advisory Council:
Colgate PG&E,
Yuba County Water
Agency, City of
Gridley**

James "Jim Ed" Edwards

Initiated into IBEW Local Union 1245 December of 1976. Member of Unit 3611, Marysville; Classification: Lineman. Shop Steward.

**Advisory Council:
Coast Valleys PG&E**

John Delsman

Initiated into IBEW Local Union 1245 in May of 1973.

Mark E. Taylor

Initiated into IBEW Local Union 1245 in July of 1978.

Remember: Ballots must be received at the designated post office box by 10 a.m., June 22.

**Advisory Council:
DeSabra PG&E**

Richard Bentler

Initiated into IBEW Local Union 1245 in November of 1984.

**Advisory Council:
Drum PG&E, Plumas
Sierra REC, City of
Roseville**

Terry Andreucci

Initiated into IBEW Local Union 1245 in April of 1977. Member of Unit 3511, Auburn; Classification: Lineman. Committees Served: Original Rubber Glove Advisory Committee, 1988; Co-mingling, 1995; CES Construction Title 8 Committee, 1995; CES/IBEW Partnership Summit, 1995; 94-53 Electric T&D LOP Committee, 1997; IBEW Communications Team-PG&E 1999 General Rate Case, 1998 to present; Shop Steward Region Training Conference, 1989 and 1992-1993; Unit 3501 Chairperson, 1993 to present.

**Advisory Council:
East Bay & Materials
PG&E, Foster
Wheeler**

Richard J. Cowart

Initiated into IBEW Local Union 1245 in December of 1972.

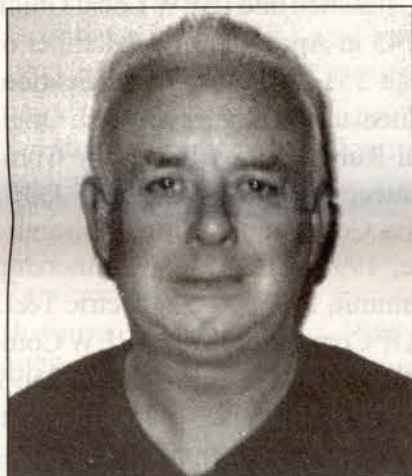
**Advisory Council:
Government
Coordinating Council
#1**

Dennis K. Seyfer

Initiated into IBEW Local Union 1245 in July of 1978.

**Advisory Council:
General Construction
PG&E**

Larry L. Darby



Initiated into IBEW Local Union 1245 in August of 1970. Member of Unit 1512, Burlingame/Penninsula; Classification: Working Foreman A. Unit Recorder for #1512, Shop Steward, 1993 to present; Election Committee, 1995; Ballot Committee, 1995; Contract Negotiation Committee, 1999; IBEW/PG&E Partnership in Santa Nella, 1995; Picketed PUC Headquarters against downsizing, 1994; IBEW/PG&E Continuous Training Program, 1991; Joint Grievance Committee, 1992; Title 8 and 94-53 Committees; Negotiation Committee, 1999.

Tony Norman

Initiated into IBEW Local Union 1245 in March of 1984. Member of Unit 1123, Merced; Classification: Backhoe Operator/Inspector. Shop

Steward, 1990 to present; Santa Nella Committee, 1991; Per Diem Committee, 1992; 94-53 PG&E & IBEW Partners In Success; 206-306 Bargaining, 1999; Delegate to IBEW International Convention in Philadelphia, 1996; Conventions for Partners in Success, Lineman Recruiting and Labor Management courses.

Christopher Reese

Initiated into IBEW Local Union 1245 in September of 1995.

**Advisory Council:
Humboldt PG&E**

Lee R. Thomas

Initiated into IBEW Local Union 1245 in December of 1977.

**Advisory Council:
Irrigation Districts**

Mike Stout

Initiated into IBEW Local Union 1245 in June of 1977. Member of Unit 2518, Modesto Irrigation; Classification: Journeyman Electrician Substation. Advisory Council; Shop Steward, 1990 to present; Safety, Retirement and Positive Discipline Negotiations Committees.

**Advisory Council:
North Bay PG&E,
City of Healdsburg**

James E. Findley

Initiated into IBEW Local Union 1245 in December of 1973.

**Advisory Council:
Outside Construction**

No candidate.

**Advisory Council:
Pacific Gas
Transmission**

John Felts

Initiated into IBEW Local Union 1245 in August of 1992. Member of Unit 3027, Spankel, WA/Rosalia; Classification: Mechanic. Shop Steward 1996 to present. Wage negotiations for PGT, 1999; PGT Labor Management, 2000-2001. Current Advisory Council Member. Inter Union Gas Conference, 1999. Shop Steward Training, 1999.

**Advisory Council:
Pipeline Operations
PG&E, C.P. National:
Needles Div. &
Henderson District**

Patrick A. Earl

Initiated into IBEW Local Union 1245 in April of 1979.

Stephen L. Jameson

Initiated into IBEW Local Union 1245 in February of 1986.

**Advisory Council:
Sacramento PG&E,
Calibration & Testing**

Dan "Krusty" Parmenter

Initiated into IBEW Local Union 1245 in December of 1984. Member of Unit 3814, Woodland; Classi-

fication: Lineman. Unit Recorder 3814; Shop Steward, 1985 to present; Load Break Elbows Committee, 1992; Safety Committee, 1986-1988; Sacramento Area Labor Management, 1989-1991; Advisory Council, 1999 to present; Shop Steward Conference, 1986 to present.

**Advisory Council:
Sacramento
Municipal Utility
District**

Arthur A. Torres

Initiated into IBEW Local Union 1245 in April of 1979.

**Advisory Council:
Sacramento Regional
Transit District**

William Gilliam

Initiated into IBEW Local Union 1245 in April of 1998. Member of Unit 3011, Sacramento Regional Transit District; Advisory Council Representative and Unit 3011 Recorder.

**Democracy
thrives on
participation.**



**Your vote
counts!**

Advisory Council:
San Francisco &
General Office PG&E

Bob Quinn



Initiated into IBEW Local Union 1245 in November of 1970. Member of Unit 1512, Burlingame/Peninsula; Classification: Gas Serviceman. Shop Steward, 28 years; Unit Chair Belmont, 10 years; Advisory Council member, 2 years; Unit Officer Leadership Conferences, 1991 to present; Exhibitor at the 34th IBEW Convention, 1991 Centennial; Delegate San Mateo Central Labor Council; Shop Steward Training Conferences, 1973 to present.

Advisory Council:
San Francisco
General Office
Clerical PG&E

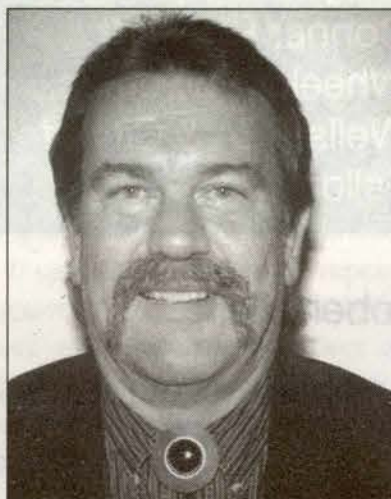
Mary Wise



Initiated into IBEW Local Union 1245 in October of 1972. Member of Unit 3801, Sacramento; Classification: Accounting Clerk. Shop Steward, 1972-present; 94-53 Committee, 1996-1998; Keypunch Negotiation Committee, 1977-1978; Clerical Job Evaluation Committee, 1981 to present; Video Display Terminal Committee, 1977 to present; Shop Steward Conferences and Shop Steward training.

Advisory Council:
San Joaquin PG&E

Ed Dwyer Jr.



Initiated into IBEW Local Union 1245 in August of 1979. Member of Unit 1111, Fresno; Classification: Gas Service Representative. Shop Steward, June 1980 to present; Served on PG&E/IBEW Negotiating Committee, 1999; Labor Management 94-53 Committee Field Services, 1993-1994, 1998-1999; Business Representative relief, IBEW 1245, Fresno area, 2000 to present.

William G. Gross

Initiated into IBEW Local Union 1245 in September of 1979.

Dan Mayo



Initiated into IBEW Local Union 1245 in June of 1975. Member of Unit 1123, Merced; Classification: Troublemaker. Lineman Advisory Committee, 1990; Joint EMF Committee, 1990 to present; Local Labor/Management Committee, 1998 to present; General Negotiations Subcommittee, 1999; Ballot Committee, 1999; Quality Assurance Standard Committee, 2000; 94-53 Committees FACTS/Electric Maintenance Title 8, 1995-1997; Electric Contracting Committee, 1996; DCS Unit Cost Committee, 1997; Contracting Overview Committee, 1998-1999; Exhibit XVI Committee, 2000 to present; EMF Conference Delegate, 1991-1997; Union Representative for Joint EMF Committee, 1991 to present; Activist on behalf of Union to help prevent 800 layoffs, 1995.

Ronald Moon

Initiated into IBEW Local Union 1245 in September of 1996.

Larry Reis

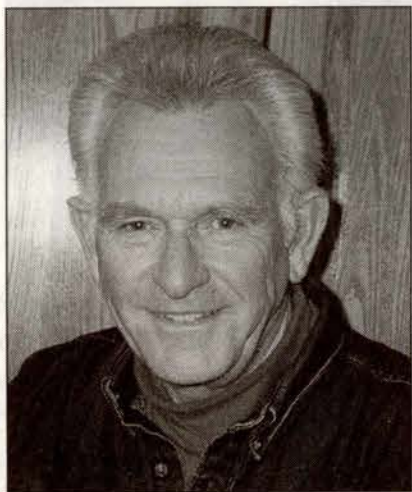
Initiated into IBEW Local Union 1245 in January of 1970.

Your Vote Counts!

(But Only If You Cast It.)

Advisory Council:
City of Santa Clara,
San Jose Division
PG&E

William Wallace



Initiated into IBEW Local Union 1245 in 1968. Member of Unit 1411, City of Santa Clara; Classification: Electrician. Advisory Council, San Jose/Belmont; Shop Steward, 1980 to present; City of Santa Clara Negotiating Committee; Labor/Management Committee; Joint Apprentice Training Committee; Political Action for South Bay Labor Council Workshop; South Bay Labor Council Delegate; Shop Steward Training; Santa Clara Strategic Planning Council; Union Label Committee; Political Candidate Selection Committee.

Advisory Council:
Shasta PG&E, City of
Redding, Lassen
MUD, Shasta Dam
Area PUD, Bella
Vista Water District

Stuart E. Neblett

Initiated into IBEW Local Union 1245 in May of 1968.

Russell W. Rylee

Initiated into IBEW Local Union 1245 in December of 1978.

Advisory Council:
Sierra Pacific Power,
WP Natural Gas-So.
Lake Tahoe, CP
National-Elko
Telephone, Truckee-
Donner PUD, Mt.
Wheeler Power Inc.,
Wells REA & City of
Fallon

Robert Vieira

Initiated into IBEW Local Union 1245 in May of 1966.

Advisory Council:
Stockton PG&E,
City of Lodi

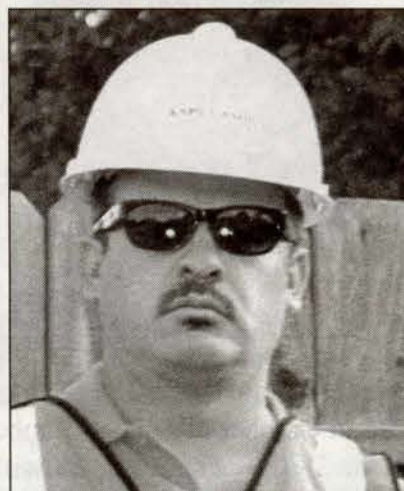
Grover Day

Initiated into IBEW Local Union 1245 in January of 1971. Member of Unit 2512, Angels Camp; Classification: Electric Crew Foreman. Local 1245 Advisory Council Member, 1985 to present; Unit 2514 Tracy Recording Secretary, 1983-1985; Unit 2514 Tracy Vice Chairperson, 1986-1988; Unit 2512 Angels Camp Recording Secretary, 1990-1995; Unit 2512 Angels Camp Vice Chairman, 1996-1999; Unit 2512 Angels Camp Unit Chairperson, 1999 to present; Shop Steward PG&E; Tracy Service Center, 1982-1988; Shop Steward PG&E Angels Camp Service Center, 1988 to present; Union/Company "Walk Around" Safety Committee Tracy and Manteca, 1984, 1986 and 1988; Union/Company "Walk Around" Safety Committee Angels Camp and Jackson, 1989, 1990, 1992, 1994, 1995, 1997; Union/Company Labor Management Committee Angels Camp, Jackson and Stockton, 1997-2000; Local 1245 Contract Ballot Committee, 1999; Special Shop Stewards Regional Training Conferences, 1989,

1990, 1992, 1994 and 1998; International IBEW Steward Training Course 1991 and 1992.

Advisory Council:
Tree Trimmer
Companies

Hector Arellano



Initiated into IBEW Local Union 1245 in December of 1995. Member of Unit 4712, Selma/Asplundh; Current Chairman of 4712; Shop Steward, 2000 - present; Attended Shop Steward Training Convention, 2000; Attended PTO Resolution, 2000.

Mark Daniel Rose

Initiated into IBEW Local Union 1245 in May of 1983. Member of Unit 4419, Redding/Davey Tree; Classification: Top Foreman/Davey Tree. Shop Steward, 1999 to present; Safety and Health Committee, 1999 to present; Advisory Council Member, 1999 to present; Negotiating Committee Member, 1999; Leadership Conference Meeting, 1999; Shop Steward Conference, March 2000.

Gilbert "Gil" Suarez



Initiated into IBEW Local Union 1245 in September of 1995. Member of Unit 4401, Redding; Classification: CLA-5. Local Unit Chairman of 4419; Shop Steward, 1999 to present; Contract Negotiating Committee Member.

Advisory Council:
U.S. Bureau of
Reclamation
Region 2

Elsie Abbey



Initiated into IBEW Local Union 1245 in December of 1998. Member of Unit 3218, Shasta-USBR; Classification: B Type. Recorder for Unit 3218.

Richard C. Perry

Initiated into IBEW Local Union 1245 in August of 1973. Member of Unit 2515, Modesto; Classification: Foreman III Electrician. Advisory

Council member, 1984 to present; Unit 2515 Recording Secretary, June 1977-May 1986; Shop Steward, 1989-1999; Bargaining Committee member for the Western Area Power Administration, 1983-1996; Apprenticeship Committee member for Western Area Power Administration, 1981-1996.

Candidates for Delegate to the 2001 International Convention of the IBEW

Ignacio Araquistain

Initiated into IBEW Local Union 1245 in June of 1984.

Joseph S. Audelo

Initiated into IBEW Local Union 1245 in May of 1978.

Anna Bayless-Martinez

Initiated into IBEW Local Union 1245 in August of 1980. Member of Unit 2511, Stockton; Classification: Customer Service Representative. Shop Steward, 1987 to present; Unit Recorder, 1986-1995; Unit Chairperson, 1996 to present; Central Area Executive Board, 1997 to present; Clerical Title 18 Committee, 1995; Wage Bargaining Committee, 1996; IBEW/PG&E Employee Involvement Committee; Proposition 226 and Proposition 9 Committees; GRC Committee; Stockton Division, CRC Labor Management, 1991-2000; Shop Steward Conferences; Women's Leadership Conferences, 1989, 1992 and 1996; IBEW Women's Conferences, 1990, 1991, 1999 and 2000; IBEW Utility Convention, 1998, 1999 and 2001; National CLUW Member; Stockton Central Labor Council; IBEW Ninth District Progress Meeting, 1997-2000.

James Brager

Initiated into IBEW Local Union 1245 in February of 1993.

Bill Brill

Initiated into IBEW Local Union 1245 in June of 1980. Member of Unit 1511, San Jose; Classification: IBEW Business Representative. San Jose Unit Chairman 1981 thru 1999 and Shop Steward 1980-1999. Have attended many Shop Steward conferences. Ballot Committee, 1983; San Jose Division Labor Management Committee member, 1990-1999; Co-Chair of San Jose Division

Labor Management Committee, 1993-1999; Co-Chair of Continuous Improvement through Employee Involvement Advisory Board, 1993-1995; Member of San Jose Division Safety Walk Around Committee, 1991-1999; Chair of Safety Walk Around Committee 1992-1999; Member of Meter Reading 94-53 Committee, 1997-1999; Member of CEO Meeting that met with Stan Skinner, 1994; Delegate to South Bay AFL-CIO Labor Council, 1984 to present; Executive Board Member to South Bay AFL-CIO Labor Council, 1994 to present; Chair of Union Labor Committee South Bay AFL-CIO Labor Council, 1989-1999; Attended AFL-CIO 3 day organization training, 1998; Graduated from George Meany Labor College class in organizing, 1999; Delegate to Consumer Federation of California, 1999; Collected over 2500 signatures in 1988 for CAL-OSHA Initiative.

Warren Brown

Initiated into IBEW Local Union 1245 in April of 1988.

Keith William Burkhardt

Initiated into IBEW Local Union 1245 in May of 1978. Member of Unit 3817, Paradise; Classification: Lineman. 94-53 Maintenance Committee, 1995-2000; Unit Recorder and Advisory Council.

Jerry R. Camacho

Initiated into IBEW Local Union 1245 in March of 1985. Member of Unit 1215, San Luis Obispo/Pismo; Classification: Lineman. Shop Steward, 1992 to present; Committees served: Title 8 Committee, 1995; Shop Steward Conferences.

Marcus A. Carrasco

Initiated into IBEW Local Union 1245 in April of 1984.

Ed "Big Ed" Caruso

Initiated into IBEW Local Union 1245 in February of 1973. Member of Unit 2317, Antioch; Classification: Relief Business Representative. Shop Steward, 1980-1983; Joint Apprenticeship Committee; Labor Management, and J.A.T.C. Delegate to IBEW Convention, 1996; Delegate to Contra Costa and Monterey Labor Councils.

Bob Choate

Initiated into IBEW Local Union 1245 in July of 1965. Member of Unit 2316, Walnut Creek/Concord; Classification: Assistant Business Manager. Served as Shop Steward, 1976-1984; Served on Local 1245 PG&E Negotiation Committees, 1979, 1981 and 1983; Steam Divestiture Sierra Pacific, 1998-1999; Multitude of bargaining contracts with several properties within 1245's jurisdiction; Delegate to International Convention, 1991; Many Utility Conferences and Ninth District Progress Meetings; 14 Labor Studies Certificates from University of California Berkeley, 1977-1992; 8 Labor Federation (AFL-CIO) Certificates in Industrial Relations and contract negotiations, 1980-1992; Past President of Nevada State Electrical Association, 1988-2000.

Rick Davis

Initiated into IBEW Local Union 1245 in December of 1980. Member of Unit 2519, Pine Grove/Tiger Creek; Classification: Electrical Machinist. Shop Steward, 1990 to the present; Unit Chairman; 94-53 Hydro Committee; Shop Steward Conferences; Unit Chairman Leadership Training Conference.

Grover Day

Initiated into IBEW Local Union 1245 in January of 1971. Member of

This concludes the list of candidates for Local 1245 Officers, Executive Board Members, and Advisory Council Members.

Beginning in the next column are candidates for Delegate to the International Convention. Note that some candidate resumes appear twice in this issue of the Utility Reporter because the candidate is running both for a Local 1245 office and also for a delegate position to the International Convention.

Grover Day, cont.

Unit 2512, Angels Camp; Classification: Electric Crew Foreman. Local 1245 Advisory Council Member, 1985 to present; Unit 2514 Tracy Recording Secretary, 1983-1985; Unit 2514 Tracy Vice Chairperson, 1986-1988; Unit 2512 Angels Camp Recording Secretary, 1990-1995; Unit 2512 Angels Camp Vice Chairman, 1996-1999; Unit 2512 Angels Camp Unit Chairperson, 1999 to present; Shop Steward PG&E; Tracy Service Center, 1982-1988; Shop Steward PG&E Angels Camp Service Center, 1988 to present; Union/Company "Walk Around" Safety Committee Tracy and Manteca, 1984, 1986 and 1988; Union/Company "Walk Around" Safety Committee Angels Camp and Jackson, 1989, 1990, 1992, 1994, 1995, 1997; Union/Company Labor Management Committee Angels Camp, Jackson and Stockton, 1997-2000; Local 1245 Contract Ballot Committee, 1999; Special Shop Stewards Regional Training Conferences, 1989, 1990, 1992, 1994 and 1998; International IBEW Steward Training Course 1991 and 1992.

Robert Dunlap

Initiated into IBEW Local Union 1245 in February of 1999.

Ed Dwyer Jr.

Initiated into IBEW Local Union 1245 in August of 1979. Member of Unit 1111, Fresno; Classification: Gas Service Representative. Shop Steward, June 1980 to present; Served on PG&E/IBEW Negotiating Committee, 1999; Labor Management 94-53 Committee Field Services, 1993-1994, 1998-1999; Business Representative relief, IBEW 1245, Fresno area, 2000 to present.

Alfonso "AL" Estes III

Initiated into IBEW Local Union 1245 October of 1980. Member of Unit 2318, Richmond; Classification: Gas Service Representative. Unit Recorder for Unit 2318. Shop Steward from 1985 to present. Motor Vehicle Accident Review Committee of 1997 to present. Area #2 CS/FSD Labor Management, 1996 to present. Executive Board Unit #2318 Shop Steward Training, Phone bank-

ing; Served on various picket lines on the Central Contra Costa Labor Council.

James E. Findley

Initiated into IBEW Local Union 1245 in December of 1973.

Al Fortier

Initiated into IBEW Local Union 1245 in May of 1991. Member of Unit 2211, Oakland; Classification: Lineman. Shop Steward 1996-1998; Delegate to Alameda Central Labor Council, 1998 to present; Electrical Workers Minority Caucus Annual Conference, 1998-2000; AFL-CIO Organizing for the 21st Century, 1998; A. Philip Randolph Institute Conferences, 1998-2001; Cal-Nev, J.A.T.C., 1991-1996.

Dorothy Fortier

Initiated into IBEW Local Union 1245 in May of 1975; Classification: Assistant Business Manager, 1987 - present. Business Representative, 1979 - 1987; Administrative Assistant 1977 - 1979; Secretary, 1975 - 1977; Served as Co-Chair for Meter Reader Committee, 2000 - present; 401K Savings Plan Committee, 2000; Clerical Consolidation Committee, 2000; Call Center Labor/Management Committee, 1995 - present; Call Center Scheduling Subcommittee, 1997 - present; Customer Service Records Backlog and Records Committee, 1995 - 1999; Customer Service Cash Handling Committee, 1999; Call Quality Monitoring Committee, 1997 - 2000; P/T Employee Benefit Committee, 1996, 1998; Operating Clerical Joint Pole Committee, 1998; Omaha Call Center Tour Committee, 1998; Senior Service Representative Technical Training Committee, 1997; Silent (Remote) Monitoring Committee, 1995 - 1997; P/T Employee Issues Committee, 1995 - 1997; Call Center Employee Development, 1997; West Sacramento Customer Billing Center Committee, 1996 - 1997; Call Center Overtime Committee, 1996; Title 18 Committee, 1996; Correspondence Management, 1996; Call Center Performance Standards, 1996; Help Desk Scheduling Committee, 1996; Help Desk Study Review Committee, 1996; Business System Replace-

ment Project (BSRP) Payroll Issues, 1995 - 1996; SF/GO Design Drafting and Reprographics, 1995 - 1996; Call Center Telephone Initiatives (Call Answering), 1995 - 1996; Measure, Bill, Collect, Print, Mail and Payment, 1995 - 1996; Customer Service Correspondence Management, 1995 - 1996; General Office Building Department, 1995 - 1996; Call and Credit Center Labor Management Committee, 1994-1995; Served as a member of the following committees: Working Group Board of Directors (WGBD), 1997 - 2000; WGBD Personnel Committee, 1999 - 2000; Coalition of Labor Union Women National Executive Board 1996 - present; Meter Reader Exhibit 17 Committee, 2000; PG&E 2000 General Bargaining Retention Subcommittee, 1999; Clerical Line of Progression Committee, 2000 - present; CPUC Quality Assurance Standards Committee, 2000; Clerical Position Evaluation Committee, 1989 - present; SF/GO E&P Negotiating Committee, 1999; Emergency Response Committee, 1996; PG&E Benefits Committee, 1998 - 2000; Titles 19/206 Member Explanation Committee, 2000; Titles 19/206 Committee, 1998 - 1999; Family Issues Committee, 1998; Employee Retention 94-53 Committee, 1997 - 1998; General Office Building Department Training Committee, 1997 - 1998; Work and Family Labor Project Committee, 1998; Summer Institute of Union Conference Women Planning Committee, 1998; PG&E Video Display Terminal Committee, 1991 - 1997; CES Coordinating Committee, 1997; PG&E Grievance Procedure (Titles 9/102) 94-53 Committee, 1996 - 1997; Work and Family Labor Project Committee, 1998; A. Philip Randolph State Executive Board, 1997; All-Hands 94-53 Committee, 1996; Bilingual Issues Committee, 1991 - 1996; CES Overview Committee, 1996; Emergency Resource Coordination 94-53 Committee, 1996; CES Coordinating Subcommittee, 1996; City of Oakland Negotiating Committee, 1995 - 1996; PG&E General Bargaining Committee, 1990 & 1993; PGT Clerical Bargaining, 1990; Contra Costa County Video Display Task Force, 1990 - 1993; Elected as delegate to IBEW International Convention 1978, 1982, 1986, 1991, 1996; Served as IBEW International Convention Sergeant at Arms, 1996; Served as delegate to Coalition of Black Trade Unionists Convention, 1996 - 2000; AFL-CIO

Women's Leadership Conference, 1997, 2000; Electrical Workers Minority Caucus Annual National Conference 1991 - 2001; Served as a delegate to the Alameda Central Labor Council since 1979, a member of the CLC Executive Committee since 1984 and as CLC President since 1999. Served as Local 1245 Leadership Conference Coordinator, 1996, 1999; Elected Secretary-Treasurer, Electrical Workers Minority Caucus, 1992, 1995, 1998, 2001 - present; Served as a Workshop Leader and Panelist at IBEW National Women's Conference, 1997, 2000; AFL-CIO National Women's Conference, 1997, 2000; A. Philip Randolph Institute Conferences, 1996 - 1999; IBEW Utility Conference, 1998, 1999; State Federation of Labor and CLC Legislative Seminar, 1999; AFL-CIO Western Region CLC Conference, 1999; AFL-CIO State Federation of Labor Women's Conference, 1999; IBEW 9th District Women's Conference and Progress Meeting, 1998; CA Consumer Federation Conference, 1998; AFL-CIO Full Participation Conference, 1998; State Federation of Labor and CLC Conference, 1997; APALA Convention, 1997; AFL-CIO Civil Rights Conference, 1997; Served as a Workshop Leader for the IBEW 9th District Women's Conference, 1996. Education: Successful completion of numerous specialized labor relations courses, and certified training programs.

Albert H. Fox

Initiated into IBEW Local Union 1245 in January of 1980.

Tim Gilbride

Initiated into IBEW Local Union 1245 in September of 1989. Member of Unit 1220, San Luis Obispo/DCPP; Classification: Chemistry and Radiation Protection Technician. Shop Steward, January 1999 to present.

William Gilliam

Initiated into IBEW Local Union 1245 in April of 1998. Member of Unit 3011, Sacramento Regional Transit District; Advisory Council Representative and Unit 3011 Recorder.

William Goodman

Initiated into IBEW Local Union 1245 in November of 1990.

Ronald Greenlee

Initiated into IBEW Local Union 1245 in March of 1991.

Robert Gregg

Initiated into IBEW Local Union 1245 in December of 1989.

Mike Grill

Initiated into IBEW Local Union 1245 in February of 1981. Member of Unit 1112, Bakersfield; Classification: Business Representative. Shop Steward, 1992-1998; Served on the Grievance Review Committee, 1997-1998; Kern, Inyo and Mono Central Labor Council Delegate.

Christine "Chris" Habecker

Initiated into IBEW Local Union 1245 in January of 1976. Member of Unit 1111, Fresno; Classification: Operating Clerk. Executive Board Southern Area Member; Clerical-At-Large Advisory Council; Shop Steward, 1982 to present; Designated Alternate San Joaquin Valley Region Shop Steward for the Clerical Position Evaluation System; Member of "No on Prop 9" Committee; 94-53 Job Retention Subcommittee (General Rate Case), 1998; CISD Labor Management Committee Area 4, 1994; Video Display Terminal Committee (VDT), 1994; Bi-lingual Telephone Center Study Committee, 1994; IBEW Title 19 presentations to PG&E's Clerical Consolidation Impacted Members, 1993; Telephone Center Staffing Advisory Committee, 1993; Telephone Improvement Workstation Evaluation Committee, 1992; Telephone Service Study Committee (Reference LA R2-9s-120-PG&E), 1994; PG&E General Negotiating Committee, 1990; PG&E Concord Negotiating Committee, 1989; Local 1245 Election Committee; San Joaquin Division Joint Grievance Committee, 1986 to present; Appeals Procedure, 1990 to present (reference LA 90-43); Delegate, 2000; IBEW National Women's Conference in Washington D.C., 2000; IBEW

Ninth District Progress Meeting in Palm Springs California, 2000; IBEW Utility Conference in St. Louis Missouri, 1999; IBEW Ninth District Progress Meeting in Maui Hawaii, 1998; IBEW Ninth District Women's Conference and Progress Meeting in Portland Oregon, 1997; IBEW Ninth District Progress Meeting in Lake Tahoe, Nevada, 1997; IBEW National Women's Conference in Washington D.C., 1998; IBEW Utility Conference in Ft. Lauderdale Florida, 1997; IBEW Utility Conference in New Orleans, 1996; IBEW Utility Conference in Los Angeles, 1991-1992; Conference for IBEW Local 1245 Union Women in Concord California; Delegate to the 8th Annual Western Regional Summer Institute for Union Women at San Diego California, 1989; Delegate to the Women in the Workforce Conference, 1986; Appointed to attend the Labor's Victory 1998 Regional Conference in Fresno California; Delegate to the 1998 Consumer Federation of California Convention in Millbrae, California; Appointed as Delegate to the 17th Annual Western Regional Summer Institute for Union Women Conference in Berkeley, California, July 6-11, 1998; Delegate to the Central Labor Council of Fresno and Madera Counties, 1991 to present; Appointed as Trustee to the Central Labor Council of Fresno and Madera Counties, 1993-1994; Elected as Recording Secretary to the Central Labor Council of Fresno and Madera Counties, 1994-1997; Member of the Central Labor Council of Fresno and Madera Counties, 1994 to present; Participated as a "rank and file" member at the December 21, 1994 meeting with Stan Skinner; Attended numerous Shop Steward training conferences; Attended Effective Grievance Resolution Training; Chairperson of the Fresno Unit 1111 1989 to present; Advisory Council Clerical-At-Large, 1994-1995; Southern Area Executive Board Member Elected in 1995 to present.

Mike Haentjens

Initiated into IBEW Local Union 1245 in April of 1978; Classification: Business Representative. Shop Steward General Construction, 1980-1981, Diablo Canyon Power Plant, 1981-1987; Unit Recorder #1220 DCP, 1981-1987; Advisory Council Coast Valleys, 1986-1987; Busi-

ness Representative Morro Bay PP, Diablo Canyon, Los Padres Division, 1987-1999, Arbor Tree Los Padres Area, 1996-1999, San Jose/North Coast Valleys Division/Tree Companies, 2000, Sonic TV/Charter Communications, 1987 to present, Relief Business Representative, 2000 to present; Labor Management DCP, 1981-1999, MBPP 1987-1999, Los Padres Division, 1987-1999, Negotiating DCP Interim Bargaining, 1983-1999, Letters of Agreements DCP/MBPP/Los Padres Division, 1987-1999, Sonic TV/Charter Communications, 1987 to present; Investigating Grievance Committees/PG&E, 1980 to present, Fact Finding/PG&E DCP/MBPP/Los Padres Division, 1987-1999, Fact Finding/PG&E San Jose/North Coast Valleys Division, 2000; IBEW Nuclear Delegate Conference, 1987-1999, IBEW Ninth District Progress Meeting Delegate New Orleans, 1996, California AFL-CIO State Convention Delegate, 2000, Tri-Counties Central Labor Council, 1989-Present, Tri-Counties Central Labor Council Executive Committee, 1996-1999.

Mickey Harrington

Initiated into IBEW Local Union 1245 in March of 1960. Member of Unit 3417, Paradise; Classification: President of Butte/Glenn Central Labor Council from 1997 to present. Offices Held: Shop Steward GC, 1962-1968; Unit 3815 Vice Chairman GC- Davis, 1966-1968; Executive Board Member At Large, 1967-1968; Local Union Ways and Means Committee, 1967-1968; Business Representative and Organizer Local 1245, 1968-1971; Public Employees Council, 1968-1972; Local Union Recording Secretary, 1971-1974; Secretary to the Policy and Resolution, Staff Benefit Committee, Political Action Committee, Chairman Local Union Ways and Means Committee, 1971-1974; Unit 3815 Chairman GC Davis, 1971-1976; Unit 2815 Recorder GC Davis, 1976-1978; Business Representative and Organizer Local 1245, 1978-1999; Ballot Committee, 1966; Election Committee, 1966; GC Grievance Committee, 1966-1980; GC Line of Progression Committee, 1970-1973; GC Equipment Committee, 1970-1971; Spokesman for City of Lodi Negotiations, 1984-1985; Spokesman for Tri-Dam Negotiations, 1985-1988;

Spokesman for Oakdale Irrigation District Negotiations, 1987-1989; Spokesman for South San Joaquin Irrigation District Negotiations, 1985-1987; Spokesman for Lassin MUD Negotiations, 1988-1993; Spokesman for Citizens Utilities Negotiations, 1989-1992; Spokesman for Plumas Sierra REC and Telecommunications Negotiations, 1991-1994, 1996-1998; Spokesman for Chambers CATV Negotiations, 1990-1993; IBEW International Convention, 1974, 1978, 1982, 1986, 1991 and 1996; National AFL-CIO Convention, 1985, 1987, 1989, 1993, 1995, 1997 and 1999; California State AFL-CIO Convention, 1968, 1972, 1984, 1986, 1988, 1990, 1992, 1994, 1996, 1998, 2000 and served as member of the Credentials Committee from 1984; Nevada State AFL-CIO Convention, 1972-1984; California State Association of Electrical Workers, 1972, 1978; Ninth District Progress Meeting, 1968, 1970, 1980 and 1991; IBEW Utility Conference 1973 and 1985; Inter-Union Gas Conference, 1974, 1998; California State COPE Pre-Primary Convention, 1972, 1982, 1984, 1986, 1988, 1990, 1992, 1994, 1996, 1998, 2000; San Joaquin/Calaveras Labor Council, 1980-1990; Telephone Conference, 1984, 1986, 1988, 1990 and 1992; California State Legislative Conference, 1972, 1982-2001; Secretary of San Joaquin/Calaveras Central Labor Council, 1984-1990; San Joaquin/Calaveras Labor Council on Political Education, 1980-1990; Butte/Glenn Central Labor Council, 1990 to present-serving as President from 1997 to present; Konocti Leadership Conference, 1996; Leadership Conference, 1971, 1974, 1977, 1980, 1983, 1986, 1989, 1992 and 1996; Dr. Morris Hurley's Management and Industrial Relation Program; Attended UC classes in Public-Private Sector Negotiations, Communications, Cost of Living Adjustments, Labor Law, Bargaining Techniques, Interest Arbitration, Training Union Leaders, Psychology of Leadership Workshop and Mutual Gains Bargaining.

James Hayes

Initiated into IBEW Local Union 1245 in October of 1984.

Gary Hughes

Initiated into IBEW Local Union 1245 in February of 1968. Member of Unit 2511, Stockton; Classification: Business Representative. Shop Steward, 1975-1989; Unit Chairman, Unit Recorder, CGT Labor Management Committee, 1975-1989; Delegate to State Federation California, 1989; Labor Federation Summer School, 1988; Center for Labor Research and Education, Berkeley, 1990.

Matthew J. Huszarik

Initiated into IBEW Local Union 1245 in September of 1985.

Danny Jackson

Initiated into IBEW Local Union 1245 in April of 1972.

Linda S. Jurado

Initiated into IBEW Local Union 1245 in January of 1982. Member of Unit 3111, Eureka; Classification: Sr. Operating Clerk. Unit Recorder Fresno, 1989-1995; Unit Recorder Eureka, 1995 to present; Election Committee, 1992; Safety Committee, 1993-1994 and 1997; Safety Action Forum, 1994; Title 18 94-53 Committee, 1996; 206/19 Displacement Presentation, 2000; Summer Regional Institute of Union Women, 1987-1988, Los Angeles/Berkeley; IBEW Tri-District Women's Issues Conference, 1990 Reno; Women's Conference, 1991-1992 Concord; Women in the Workforce Conference, 1994 Los Angeles; Delegate to Central Labor Council, Fresno/Madera 1991-1995; Ad Council Clerical-At-Large alternate; Ad Council Clerical-At-Large, 1995-1998; Delegate to International Convention, 1996 Philadelphia; Joint Grievance Training, 1997; Ad Council Clerical-At-Large, 2000 to present; Delegate to Utility Worker's Conference Reno, 2001.

John D. Kent

Initiated into IBEW Local Union 1245 in November of 1977. Member of Unit 3716, Napa; Classification: Temporary Business Representative/Lineman. Unit Chair for

Unit 3716 for seven years; Shop Steward, 1990 to present; T&D Assistant, 1997; S.O. 205, 1997; General Rate Case, 1998; Bargaining Benefits Committee, 1999; Electric T&D Over-view, 2000; Apprentice Lineman Committee, 2000-2001; Alcohol & Drug Peer Referral Committee, current.

Steven Lee

Initiated into IBEW Local Union 1245 in May of 1975.

Dan Lockwood

Initiated into IBEW Local Union 1245 in April of 1981.

Steve "Esteban" Lopez

Initiated into IBEW Local Union 1245 in January of 1978. Member of Unit 2317, Antioch; Classification: Control Tech. Local Unit Vice-Chair; Shop Steward, 1980 to present; 94-53 Negotiations Committee; Numerous Shop Steward Conventions; Demonstration-Rallies.

Gary Mai

Initiated into IBEW Local Union 1245 in April of 1968.

Ed Mallory

Initiated into IBEW Local Union 1245 in May of 1966. Member of Unit 1112, Bakersfield; Classification: Electrical Technician. Shop Steward, 1977 to present; Local 1245 Political Education Committee, 1994 to present; Delegate to Kern-Inyo-Mono Counties Central Labor Council, 1986 to present; E-Board of Kern-Inyo-Mono Counties Central Labor Council, 1996 to present; Unit 1112 Chairman, 1977-1986; Local 1245 Treasurer, 1989-1993; Local 1245 Recording Secretary, 1993 to present; Shop Steward Conferences, 1966 to present; Ninth District Progress Meetings Convention, 1989-1992, 1995-1997 and 2000; IBEW Utility Conference, 1990-1993, 1995-1996, 1999 and 2001; California Federation of Labor Legislature Conference, 1994-2001; California Federation of Labor Constitutional Convention, 1994, 1996, 1998 and 2000; California Federation of Labor Pre-

Primary Convention, 1994, 1996, 1998 and 2000; Inter-Union Gas Workers Conference, 1997 and 2000.

Richard "King City Dick" Manley

Initiated into IBEW Local Union 1245 in October of 1964. Member of Unit 1213, King City; Classification: Troublemaker. Unit Chairman and Unit Recorder; Shop Steward, 1971 to present; Educational Conference Walnut Creek; Shop Steward training.

Landis Martilla

Initiated into IBEW Local Union 1245 in March of 1977. Shop Steward IBEW Pacific Gas and Electric San Francisco, 1985; Joint Grievance Committee Member San Francisco, 1987; Rubber Glove Rank and File Committee Member, 1988; Advisory Council Member San Francisco Physical, 1988; IBEW 1245/PG&E Wage Opener Negotiator Committee, 1989; Business Representative, 1990; San Mateo Central Labor Council, 1990; Union/PG&E Family Issues Negotiating Committee, 1991; Public Utilities Commission Consensus Group on Electro Magnetic Fields, 1991; Union Spokesman for IBEW/PG&E Joint Committee on EMF, 1991; Cal-OSHA Advisory Committee, 1991; Union Spokesman Asplundh Tree Expert Company Negotiating Committee, 1991; Elected to Executive Board San Mateo Central Labor Council, 1991; Union Spokesman Davey Tree Surgery Negotiating Committee, 1992; Secretary IBEW/PG&E Joint Apprenticeship Committee, 1992; Union Health and Safety Coordinator, 1992; Senior Business Representative, 1993; Union Spokesman Arbor Tree Negotiating Committee, 1994; Facility Assessment Computerized Tracking System Committee, 1995; General Order 165 Electrical Distribution Maintenance Advisory Committee to the PUC, 1996; Union Spokesman General Negotiations with EPA-Provco, 1996; General Order 95 Rule 35 Advisory Committee on Tree Trimming Standards, 1997; Outside Line Representative Northern California, 1999; California Nevada Outside Line Apprentice Training Trust Trustee, 2000; Secretary Outside Line Joint Safety Committee, 2000; Outside

Line General Negotiating Committee, 2000.

Dan Mayo

Initiated into IBEW Local Union 1245 in June of 1975. Member of Unit 1123, Merced; Classification: Troublemaker. Lineman Advisory Committee, 1990; Joint EMF Committee, 1990 to present; Local Labor/Management Committee, 1998 to present; General Negotiations Subcommittee, 1999; Ballot Committee, 1999; Quality Assurance Standard Committee, 2000; 94-53 Committees FACTS/Electric Maintenance Title 8, 1995-1997; Electric Contracting Committee, 1996; DCS Unit Cost Committee, 1997; Contracting Overview Committee, 1998-1999; Exhibit XVI Committee, 2000 to present; EMF Conference Delegate, 1991-1997; Union Representative for Joint EMF Committee, 1991 to present; Activist on behalf of Union to help prevent 800 layoffs, 1995.

Cathi "Mazz" Mazzacavallo

Initiated into IBEW Local Union 1245 in April of 1982. Member of Unit 1220, San Luis Obispo/Diablo Canyon; Classification: First Plant Clerk.

Jim "Mac" McCauley

Initiated into IBEW Local Union 1245 in March of 1960. Member of Unit 2318, Richmond East Bay Division; Classification: Underground Construction Foreman. Employed by PG&E Richmond; Elected as Vice President of the Executive Board in 1989 and has been re-elected in each Local Union election since; Chairperson pro-tem of the Advisory Board; Served as Executive Board member representing Central Area, 1986-1989; Member of the Board of Directors of the IBEW Local Union 1245 Energy Workers Center, 1986 to present; East Bay Division Advisory Council member 1974-1977; Shop Steward in East Bay Division 1970 to present; and Chairperson of PG&E New Business Competitive Pilot program, 1996 to present; IBEW Construction Representative for the Gas & Electric Rodeo, 1995 to present; Chairperson, Vice-Chairperson and Executive Committee member of East Bay Unit 2311; Member of East Bay Division Joint Grievance

Committee; Area 2 Labor-Management Committee; Local Union Political Action Committee, 1986-1998; Chairperson of Local Union Political Action Committee, 1989 to present; Member of the Alameda and Contra Costa Central Labor Councils; Served on the Local Union Ballot Committee, 1972; Local Union PG&E Wage and Contract Committee, 1973; Local Union PG&E Wage Committees, 1974-1975; Attended Unit Officer Training Conferences, 1971, 1974, 1977, 1989, 1992 and 1995; Served as an instructor of the Chairperson's Workshop; Long Island Fact Finding meeting in New York, 1973; Clerical Conference, 1974; Women in the Workplace Conference, 1992; Inter-Union Gas Conference, 1975, 1977-1979, 1987-2000; Chaired Gas Construction Workshop, 1997-2000; Served as Secretary of the Gas Distribution Workshop and the IBEW Caucus, 1990-2000; Served as IBEW's representative on the Steering Committee to the Inter-Union Gas Conference, 1998; Attended the California AFL-CIO Legislative Conferences, 1978-1979, 1986-2000; Pre-primary COPE Convention, 1979, 1986-2000; California State Federation of Labor AFL-CIO Convention, 1980, 1986-2000; IBEW Utility Conferences, 1978-1979, 1988-2000; Attended IBEW Ninth District Progress Meetings, 1978-1979, 1987-1991, 1993-2000; Attended Labor Management Public Affairs Committee, 1988, 1999; Attended Consumer Affairs Conference, 1999; Delegate to the California State Association of Electrical Workers meeting, 1978, 1994, 1998-2000; Attended seminars and conferences dealing with health and safety in the workplace (OSHA, Cal/OSHA, EEOC and FEPC); Delegate to the Administrative Law Judge Conference, 1979; Delegate to the 1982 International Convention, Los Angeles; International Convention Toronto, Canada, 1986; 100th IBEW International Convention St. Louis, 1991; International Convention Philadelphia, 1996; Member of the Coalition of Labor Union Women (CLUW); Business Representative assigned to East Bay Division, Fremont Gas Meter Shop, Material Control, Emeryville, CATV and X-Ray Engineering; Served as a member and spokesperson for Local Union Tele-vue Systems Negotiating Committee, 1978; Local Union Bay Cablevision Negotiating Committee, 1978; Local Union Concord TV

Cable Negotiating Committee, 1978; X-Ray Engineering Committee, 1978; PG&E Gas Meter Shop Rate Committee, 1979; PG&E Gas Department Negotiating Committee, 1980; East Bay Division Joint Grievance Committee; Materials Distribution Joint Grievance Committee; Gas Meter Shop Labor/Management meetings; member and co-spokesperson of Local Union Teleprompter Properties Negotiating Committee, 1980; Served as a delegate to the Alameda County Central Labor Council; delegate and Executive Board member of the Contra Costa Central Labor Council, and participated in numerous picket lines and other demonstrations for the Alameda and Contra Costa Labor Councils; Organized curriculum and presented to the East Bay Shop Stewards program; Completed three day workshop on AFL-CIO one on one program; completed Labor Communications, COLA, Health and Safety, Labor Law, Labor Negotiations and Psychology of Union Labor Leaders courses from the Institute of Industrial Relations, University of California, Berkeley; Organizing and Communications for Labor Leader courses from Merritt College; Collective Bargaining, Labor Economics and Labor History courses from Los Medanos College; Guest speaker on behalf of Local Union 1245 at Chabot College, Diablo Valley College, Merritt College, and High Schools in the Bay Area; Also a certified Union Counselor for Alameda Central Labor Council; Participated on behalf of Local Union 1245 at career night at Bay Area high schools; Organized the first three IBEW Local Union 1245 softball tournaments and picnics; co-chair of the 2000 IBEW golf tournament; Represented Local Union 1245 on Central Division Substance Abuse program, 1989-1992; Received IBEW Life Saving Award, 2000.

John M. Mendoza

Initiated into IBEW Local Union 1245 in December of 1983.

Steve K. Montgomery

Initiated into IBEW Local Union 1245 in March of 1982.

Evaluate the candidates, then be sure to vote!

Lynn A. Moon-Brown

Initiated into IBEW Local Union 1245 in October of 1984.

Dave Morrison

Initiated into IBEW Local Union 1245 in May of 1979. Member of Unit 4014, Elk Grove; Classification: Cutwriter Citizens Communications. Shop Steward, 1980 to present; Unit Chairperson, 1980-1983, 1999 to present; Ad Council, 2000 to present; Safety Committee, 1987-1998; Communications Convention, February 2001; Multi Shop Steward Conferences.

Darryl Munson

Initiated into IBEW Local Union 1245 in September of 1992.

Tony Norman

Initiated into IBEW Local Union 1245 in March of 1984. Member of Unit 1123, Merced; Classification: Backhoe Operator/Inspector. Shop Steward, 1990 to present; Santa Nella Committee, 1991; Per Diem Committee, 1992; 94-53 PG&E & IBEW Partners In Success; 206-306 Bargaining, 1999; Delegate to IBEW International Convention in Philadelphia, 1996; Conventions for Partners in Success, Lineman Recruiting and Labor Management courses.

Brian R. Owens

Initiated into IBEW Local Union 1245 in March of 1977. Member of Unit 2517, Sonora; Classification: Meter Reader. Unit 2517 Chairman; Shop Steward, 1999 to present.

Dan "Krusty" Parmenter

Initiated into IBEW Local Union 1245 in December of 1984. Member of Unit 3814, Woodland; Classification: Lineman. Unit Recorder 3814; Shop Steward, 1985 to present; Load Break Elbows Committee, 1992; Safety Committee, 1986-1988; Sacramento Area Labor Management, 1989-1991; Advisory Council, 1999 to present; Shop Steward Conference, 1986 to present.

Richard C. Perry

Initiated into IBEW Local Union 1245 in August of 1973. Member of Unit 2515, Modesto; Classification: Foreman III Electrician. Advisory Council member, 1984 to present; Unit 2515 Recording Secretary, June 1977-May 1986; Shop Steward, 1989-1999; Bargaining Committee member for the Western Area Power Administration, 1983-1996; Apprenticeship Committee member for Western Area Power Administration, 1981-1996.

Bob Quinn

Initiated into IBEW Local Union 1245 in November of 1970. Member of Unit 1512, Burlingame/Peninsula; Classification: Gas Serviceman. Shop Steward, 28 years; Unit Chair Belmont, 10 years; Advisory Council member, 2 years; Unit Officer Leadership Conferences, 1991 to present; Exhibitor at the 34th IBEW Convention, 1991 Centennial; Delegate San Mateo Central Labor Council; Shop Steward Training Conferences, 1973 to present.

Christopher Reese

Initiated into IBEW Local Union 1245 in September of 1995.

Russell W. Rylee

Initiated into IBEW Local Union 1245 in December of 1978.

Michael L. Saner

Initiated into IBEW Local Union 1245 in November of 1985.

Barbara Saunders

Initiated into IBEW Local Union 1245 in December of 1977.

Frank Saxsenmeier

Initiated into IBEW Local Union 1245 in November of 1959. Member of Unit 2211, Oakland General; Classification: Business Representative, October 1978 to present. Shop Steward, 1974-1978; Advisory Council

Frank Saxsenmeier, cont.

cil, 1977-1978; Joint Apprenticeship and Training Committees, 1980-2000; Chief Negotiator for numerous contract negotiations for City of Oakland, Berkeley, Ukiah, AC Transit, Port of Oakland, etc.; Delegate to San Francisco Central Labor Council, Marin C.L.C., Napa, Solano C.L.C., Sonoma, Mendocino Lake C.L.C, currently Alameda C.L.C and Contra Costa C.L.C.

Michael A. Scafani

Initiated into IBEW Local Union 1245 in June of 1978. Member of Unit 3712, Santa Rosa; Classification: Fitter Gas T&D. Shop Steward, 1995 to present; Member of the General Negotiation Committee; 206/19 Subcommittee, 1999; Exhibit XVI Contracting Committee; Santa Nella Summit; Inter-Union Gas Conference, 1997; IBEW Convention, 1998; GRC Communication Committee, 1999.

David D. Scott

Initiated into IBEW Local Union 1245 in March of 1979.

Dennis K. Seyfer

Initiated into IBEW Local Union 1245 in July of 1978.

Bernard R. Smallwood

Initiated into IBEW Local Union 1245 in October of 1985. Member of Unit 2314, Castro Valley/Hayward; Classification: Business Representative. Former PG&E Gas OM&C employee; Advisory Council member representing San Francisco Division and General Office; Shop Steward; Member of PG&E Area One Labor/Management Committee; San Francisco Pipeline Replacement Labor/Management Subcommittee member; IBEW Local 1245 General Rate Case (GRC) Presentation Committee member; San Francisco Division Gas OM&C Departmental Labor/Management Committee member; Chairperson San Francisco Unit 2412; Vice Chairperson Unit 2412; Alternate Advisory Council Member; IBEW Local 1245/PG&E General Negotiations; D.O.T Drug Testing Negotiations Committee; IBEW

Local 1245 Ballot Committee; Alameda County Chapter A. Phillip Randolph Institute (A.P.R.I) Committee member; Delegate to APRI State Conference; Delegate to APRI Regional Conference; Delegate to APRI National Conference; Delegate to Western Hemisphere Worker's Conference; Member of Electrical Workers Minority Caucus; I have also attended numerous Shop Steward Seminars and the AFL-CIO sponsored summer school. Classes included Labor History, Grievance and Arbitration Handling.

Lonnie D. Smith

Initiated into IBEW Local Union 1245 in April of 1978.

Ione E. Snyder

Initiated into IBEW Local Union 1245 in May of 1979. Member of Unit 3711, Novato/Marin County; Classification: Senior Operating Clerk. Current Unit Chairperson; Shop Steward, 1993 to present; Member Labor Management Committee, 1994-1996; Member Safety Walk Around Committee, 1994-2000; Attended Clerical Shop Steward Conference on March 3, 2001; Attended Shop Steward Conference on March 24, 2001.

Percy "Smiley" Stahl

Initiated into IBEW Local Union 1245 in April of 1974. Member of Unit 3314, South Lake Tahoe; Classification: Line Working Foreman. Shop Steward, 1982-1989 (Outside 1245), 1989-2001 (SPPC), Unit Chairman; Served on the Union Safety Committee, 1985-1986 and 1996-1997; Union Contract Review Committee, January 13-18, 1991; Shop Steward Conference Reno, Nevada, June 29, 1991; Chairman and Secretary Conference, Walnut Creek; Annual Shop Steward Conference, 1991-2001; Field Ambassador Training, May 30, 1991; Mutual Gains Conference, October 1-7, 1995; SEMS, October 15, 1996; Management Union Arbitrator Training Conference, 2000; Advisory Board Conference Reno, Nevada, 1998; Leadership Development Training, May, 1996.

Hunter Stern

Initiated into IBEW Local Union 1245 in September of 1994. Member of Unit 2412, San Francisco; Classification: Business Representative Local Union 1245. Foster Wheeler Negotiating Committee, September-October 1995; PG&E 94-53 Transmission and Distribution Committee, 1996-1997; PG&E 94-53 Steam Divestiture Committee, 1999-2001; Delegate to San Francisco; San Mateo and Contra Costa Labor Councils; Delegate to California Labor Federation Convention, 2000; Delegate to IBEW 9th District Convention, 1995; Delegate to California State Federation Legislative Conference, 2001.

Mike Stout

Initiated into IBEW Local Union 1245 in June of 1977. Member of Unit 2518, Modesto Irrigation; Classification: Journeyman Electrician Substation. Advisory Council; Shop Steward, 1990 to present; Safety, Retirement and Positive Discipline Negotiations Committees.

Lemuel M. Stubblefield

Initiated into IBEW Local Union 1245 in December of 1988.

Sam Tamimi

Initiated into IBEW Local 1245 in March of 1971. Member of Unit 2316, Concord; Classification: Assistant Business Manager. Shop Steward, 1971-1981; Business Representative; Assistant Business Manager; Served on numerous committees; Delegate to the 34th and 35th International Convention.

Mark E. Taylor

Initiated into IBEW Local Union 1245 in July of 1978.

Lee R. Thomas

Initiated into IBEW Local Union 1245 in December of 1977.

Kathy F. Tindall

Initiated into IBEW Local Union

1245 in August of 1973. Member of Unit 3311, Reno; Classification: Clerical Specialist, Sierra Pacific Power Company, Reno. Currently serves as Northern Area Executive Board member for Local Union 1245; Served as Local Union Recording Secretary, 1977-1983; Northern Area Executive Board member, 1976-1977; Served as Alternate Advisory Council Member Sierra Pacific Power Company, 1976; Formerly a Shop Steward at Sierra Pacific Power Company; Christmas Party Committee; Chairman Unit 3311 Reno, 1979; Past member of the Local Union Communications Committee; Past Secretary of the Local Union Administrative Committee; Past member of the Local Union Political Education Committee of the Executive Board; Current member of Local Union Ways and Means Executive Board Committee; Served on the 1974 Sierra Pacific Power Company Ballot Committee and was a member of the Sierra Pacific Negotiating Committee, 1975-1976; Served on Interim Negotiating Committee for Materials Services Department, 1989; Served as Secretary and a member of Local Union Advisory Council; Delegate to the IBEW Regional Utility Conference, 1980-1982, 1984, 1988-1992, 1994-1999; Delegate to California Federation Women in the Work Force Conference, 1981; Delegate California State AFL-CIO COPE Endorsement Convention, 1988; Delegate California State Legislative Conference, 1977, 1988 and 1991; Delegate to the Ninth District Progress Meetings, 1977, 1980, 1983-1986, 1988-1993, 1995-1998; Delegate to Women in the Work Force Conference, 1977-1978, 1980, 1983 and 1984; Attended the Local Union Leadership Conference 1977 and 1980; Served on the 1978 Planning Committee for Women in the Economy Conference. Delegate to California Labor Federation Pre-Primary Election Convention, 1988; Delegate to California State AFL-CIO Convention, 1986-1988; Elected delegate to the IBEW International Convention, 1978, 1982, 1986, 1991 and 1996. Delegate to Nevada State AFL-CIO Convention, 1977-1982, 1984-1997; Served as Chairman of the Union Label Committee of Nevada AFL-CIO Convention in 1978-1979; Served as Chairman of COPE Committee of Nevada State AFL-CIO Convention, 1980-1982, 1984-1997; Delegate of California Electrical Association, 1981; Delegate to

California AFL-CIO COPE Convention, 1979; COPE Committee Chairman of Nevada AFL-CIO Candidate Endorsement Convention; IBEW Regional COPE Conference Delegate, 1980; Delegate to the Western Regional Labor Summer Institute for Union Women, 1984; Delegate Coalition of Labor Union Women National Executive Board Meetings, 1985-1998, 1999-2000; Attended and received a Certificate of Merit from the Rocky Mountain Labor School, 1985-1986; Northern Nevada Central Labor Council Coordinator for the 1985 Fourth Annual Nevada State AFL-CIO; Occupational Safety and Health Conference; Appointed to National Executive Board of the Coalition of Labor Union Women representing Nevada as State Vice-President 1983-1988; Representing the IBEW on the National Executive Board of the Coalition of Labor Union Women, 1988-1998 and 1999-2000; Elected delegate to the National CLUW Convention, 1986, 1988, 1990, 1992, 1994, 1996 and 1998; Appointed member to represent Labor on the Reno Commission for the Status of Women, 1980-1988; Instructor for October, 1985 Labor Workshop at the Truckee Meadows Community College Conference on Women, Work & Wages—The Issues of the 1980's promoting economic equality for women; Delegate to the Northern Nevada Central Labor Council and has served as Trustee, 1983-1985; Secretary-Treasurer, 1986-1998; Delegate Nevada State AFL-CIO Legislative Conference; 1989-1997; Recipient of Special COPE Volunteer in Politics VIP Award, 1988; Member of Nevada State Electrical Workers Association Board since 1980.

Robert Vieira

Initiated into IBEW Local Union 1245 in May of 1966.

William Wallace

Initiated into IBEW Local Union 1245 in 1968. Member of Unit 1411, City of Santa Clara; Classification: Electrician. Advisory Council, San Jose/Belmont; Shop Steward, 1980 to present; City of Santa Clara Negotiating Committee; Labor/Management Committee; Joint Apprentice Training Committee; Political Ac-

tion for South Bay Labor Council Workshop; South Bay Labor Council Delegate; Shop Steward Training; Santa Clara Strategic Planning Council; Union Label Committee; Political Candidate Selection Committee.

Steve C. Ward

Initiated into IBEW Local Union 1245 in November of 1973. Member of Unit 1217, Templeton; Classification: Lineman. Communication and Title 206 Committee; General Rate Case Presentation Southern PG&E System, 1999; General Negotiations Subcommittee Member, 1999; Title 206 Negotiations Contract Committee; Title 200 and 300 Meeting Guidelines Delegate, 1995; Represented IBEW 1245 as Consultant to C.U.E. at CPUC Electric Service and Safety Standards Investigation; Worked with Union Staff and C.U.E. on GO 165 and AB 1890 issues; 94-53 Maintenance Committee; Developed Maintenance Manual and Fax Program, 1995-1996; Stan Skinner Meeting Delegate, 1994 on Service, Safety and Reliability.

Lula Washington

Initiated into IBEW Local Union 1245 in October of 1991; Classification: Business Representative. Alameda County Labor Council Delegate; Electrical Workers Minority Caucus Convention; A.P.R.I.; Labor and Urban Studies Degree.

Kenneth Wilson

Initiated into IBEW Local Union 1245 in April of 1990.

Kip Yaughn

Initiated into IBEW Local Union 1245 in May of 1996.

This concludes the list of candidates for Delegate to the International Convention.

**Be
Sure
to
Vote!**

AFL-CIO NATIONAL BOYCOTTS

DO NOT
BUY



DO NOT
BUY

Building Materials & Tools

BROWN & SHARPE MFG. CO.

Measuring, cutting and machine tools and pumps

►Machinists

JET EQUIPMENT & TOOLS, INC.

Auburn, Wash., distributor of "JET" brand metal- and wood-working power and hand tools for home and commercial use.

►Teamsters

SOUTHWIRE CO.

Commercial and industrial wire and cable; Do-It-yourself brand homewire.

►IBEW

Entertainment & Recreation

BLACK ENTERTAINMENT TELEVISION

BET cable television, Action pay-per-view, Bet on Jazz

►IBEW

TROIKA ENTERTAINMENT

Troika's touring production of The Sound of Music

►Actor's Equity Association

FOOD & BEVERAGES

MT. OLIVE PICKLE CO.

Pickles and relishes sold under the Mt. Olive and other labels, including the Food Lion and Harris Teeter supermarket "house" labels.

►Farm Labor Organizing Committee

DIAMOND WALNUT CO.

Diamond brand canned and bagged walnuts and walnut pieces.

►Teamsters

PICTSWEET MUSHROOM FARM

Fresh mushrooms and frozen vegetables with the Pictsweet label.

►United Farm Workers

FARMLAND DAIRY

Milk sold under the Farmland Dairy label in stores in Connecticut, New Jersey and New York.

►Teamsters

BASIC VEGETABLE PRODUCTS/BASIC AMERICAN FOODS

Dehydrated garlic, onion, and other vegetable products, chiefly for institutions such as colleges, hospitals and hotels, and for other food processors. Labels include: Snow White garlic, Mello Toasted onion, Dia-A-Heat garlic and chilis, Potato Pearls, Golden Grill hashbrowns and potato pancakes, Santiago Refried Beans, Quick-Start Chili Mix

►Teamsters

FURNITURE

STRAITS FURNITURE CO.

Jackson, Miss., manufacturer of entertainment centers, dining room and bedroom furniture. Brands include: Canbrough Oak Collection, Downing Street Collection, Cherry Creek Collection, Hood, Straits.

►IUE-CWA Industrial Division (formerly Electronic Workers)

TRANSPORTATION & TRAVEL

BEST WESTERN-GROSVENOR RESORT

Hotel in Lake Buena Vista, Fla.; located at Disney World, but separately owned and operated.

►Hotel Employees and Restaurant Employees

FOUR POINTS BY SHERATON

Hotel in Waterbury, Conn.

►Hotel Employees and Restaurant Employees

HOLIDAY INN SUNSPREE HOTEL

Hotel in Kapaa, Hawaii

►Longshore & Warehouse Union

NEW OTANI HOTEL & GARDEN

Hotel in downtown Los Angeles

►Longshore & Warehouse Union

OTHERS

CF&I STEEL and OREGON STEEL MILLS, INC.

Steel, including rod, bar, rail, pipe and steel plate

►Steelworkers

R. J. REYNOLDS TOBACCO CO.

Cigarettes: Best Value, Camel, Century, Doral, Eclipse, Magna, Monarch, More, Now, Salem, Sterling, Vantage, and Winston; plus all Moonlight Tobacco products

►Bakery, Confectionery, Tobacco Workers & Grain Millers

PLEASE POST