

1245

International Brotherhood
Of Electrical Workers
Local 1245, AFL-CIO
June 1996
Vol. XLV No. 6

UTILITY REPORTER

Unit Schedules
Pages 6-7

Bracing for automated meter reading at PG&E

By Tom Dalzell

Reacting to a confusing if not conflicting set of regulatory and business drivers, PG&E continues with plans that will eventually result in a system that would automate part or all of the company's 8.2 million electric and gas meters.

The jobs of hundreds of Local 1245 members, ranging from Meter Readers to Gas Servicemen to Troublemakers to Meter Technicians to Service Representatives, will be profoundly affected by implementation of an automated meter reading (AMR) system.

Last month, PG&E informed Local 1245 that it had requested bids from three vendors to install between 50,000 and 100,000 automated meters as part of a pilot project. AMR will be tested in an area which has been selected as the test site for implementing several



PG&E meter readers got an update on new meter reading technology and its implications during a recent meeting at union headquarters in Walnut Creek.

new technological projects, including AMR, the Mobile Terminal System, a new Customer Information System, and a new Outage Management System.

Once the bids are received from the vendors, PG&E will select a vendor and begin the process of actually building the infrastructure required for the radio frequency AMR system as well as retrofitting and installing meters. PG&E expects that 50,000 meters will be installed by the end of 1996 and the remaining 50,000 by the middle of 1997.

The joint labor-management Meter Reader 94-53 Committee met on May 13 with the affected meter readers and afterwards was thoroughly briefed on the company's plans for the pilot project. At the end of the meeting, two subcommittees were formed.

The first subcommittee will deal exclusively with the concerns of the ten Meter Readers and one Senior Meter Reader in the test site area. The company will perform dual reads (both automated and Meter Reader reads) for at least two to

three months after the AMR system is installed, and there will most likely be a need for some Meter Readers in

See PAGE FIVE

Register to Vote!

If you've moved or changed your name since you last voted (or if you've never registered before at all), you need to register in order to vote. It's easy! You can do it by mail. Call toll-free:

1-800-345-8683

Union ballot committee prepares for election

The local union's International Convention Ballot Committee met in April and May to establish election procedures and process nominations for the Sept. 16 IBEW convention in Philadelphia.

The committee responsibilities included the verification of nominees, contacting the candidates, and compiling the candidate resumes that appeared in last month's Utility Reporter.

The committee will also

be responsible for verifying the eligibility of all members casting ballots. Ballots will be mailed to members at the beginning of June by an independent agency, Snyder/Newell, Inc. of San Francisco. Completed bal-

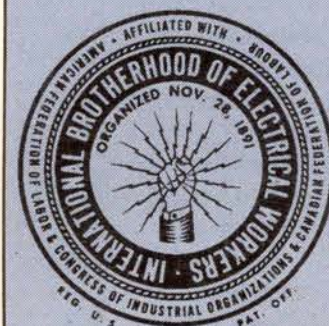
lots must be received at the union's post office box by 10 a.m. on June 22.

Serving on the International Convention Ballot Committee are: Stephanie Baber, judge, Robert Crone, Marie Graham, Debra Hall, John Mike Hamm, James Mahoney, Dave Pittman, Gina Pongasi, Shirley Roberts, Ike Williams and Assistant Business Manager Perry Zimmerman.

Local 1245 is entitled to send 15 delegates to the International Convention. Business Manager Jack McNally and President Howard Stiefer were elected during local union elections last year. The remaining 13 delegates will be chosen in this month's election.



Members of the International Convention Ballot Committee meeting in Walnut Creek.



INSIDE

Government's Role
Page 3

Russell Foxe Honored
Page 3

Sneak Attack on Overtime
Page 4

Union Family Savers
Page 5

Unit Meeting Schedule
Pages 6-7

Financial Statement
Pages 8-10

Retirees Corner
Page 11

California Boycott List
Page 12

CALENDAR

June 1
Local 1245
Golf Tournament
Novato, Ca.

June 7
Outside Line Pin Dinner
Palm Springs, Ca.

June 8
Local 1245
Softball Tournament
Concord, Ca.

June 15
SMUD-PG&E-Local 1245
Gas & Electric Rodeo
Manteca, Ca.

June 22
Deadline for Returning
Ballots in Election of
Delegates to the
International Convention



UTILITY
REPORTER

June 1996
Volume XLV
Number 6
Circulation: 26,000

(510) 933-6060

**Business Manager
& Executive Editor**

Jack McNally

President

Howard Stiefer

Executive Board

Jim McCauley
E. L. "Ed" Mallory
Debbie Mazzanti
Chris Habecker
Kathy F. Tindall
Michael Davis

Treasurer

Mike Brocchini

Communications Director

Eric Wolfe

Published monthly at 3063 Citrus Circle, Walnut Creek, California 94598. Official publication of Local Union 1245, International Brotherhood of Electrical Workers, AFL-CIO, P.O. Box 4790, Walnut Creek, CA 94596.

Second Class postage paid at Walnut Creek and at additional mailing offices. USPS No. 654640, ISSN No. 0190-4965.

POSTMASTER: Please send Form 3579, Change of Address, and all correspondence to Utility Reporter, P.O. Box 4790, Walnut Creek, CA 94596.

Single copies 10 cents, subscription \$1.20 annually.

Have you moved lately? If so, please send your complete new address and your social security number to the Utility Reporter, P.O. Box 4790, Walnut Creek, CA 94596.

*Workers here and abroad***Rolling the union on...****Defending Overtime:**

Over 500 people picketed hearings in San Diego by the state Industrial Welfare Commission, the California AFL-CIO News reported. The IWC, whose members were appointed by Gov. Pete Wilson, wants to abolish mandatory overtime payment for work in excess of 8 hours in a day.

Price of a Life?: "I believe strongly that businesses of all sizes need some form of relief from the numerous and costly burdens imposed by federal agencies, such as OSHA... Need-

less regulations add to the price of everything from pain to potato chips." That's what US Senator Spence Abraham (R-Mich.) said in a letter to Joe Palazzola, whose 20-year-old son was killed in an industrial accident.

CEO Jailed: Thomas R. Hochschild, president of Crystal Window Cleaning Co. in Cleveland, was sentenced to 18 months in prison for felonious contempt of court after failing to obey a 1991 federal appeals court order enforcing an NLRB ruling. The NLRB found that Crystal Window illegally discharged employees and failed to honor a collective bargaining agreement with the Service Employees.

German Strike: Public workers in Germany staged warning strikes last month to protest government proposals to cut public spending. Streetcars, buses, garbage disposal, mail and other services were halted, according to the New York Times.

Unfair in Detroit: About 500 unionists last month marched outside Gannett's corporate headquarters in Arlington, Va. during a stockholder's meeting to protest the company's failure to reach a fair contract with striking workers at the Detroit News.

June Boycott: Responding to the Chinese

government's persistent refusal to stop ongoing and serious violations of human and union rights, the AFL-CIO has called for a boycott of all Chinese-made goods during the month of June.

Strawberry Campaign: Over 5,000 Watsonville strawberry workers rallied in April to support a new organizing drive by the United Farm Workers, the California AFL-CIO News reported. "Strawberry workers endure some of the lowest wages and most abusive working conditions in California," said UFW President Arturo Rodriguez.

Law Ignored: Even as Congress debates raising the minimum wage, the current minimum of \$4.25 is being routinely ignored, according to Princeton University labor economist Alan Krueger. He estimates that two to three million workers are being illegally paid less than the current minimum wage.

Attacks on Safety: The Republican budget resolu-

Watch

we do the
work

Mondays at 7:30 pm on KQED/Channel 9

When Children Do the Work
products made with child labor sold in the US
June 10

Tools of the Trade
features the building trades
June 17

Workplace Beat: covering the Bottom Line
looks at the Detroit newspaper strike
June 24

State of the Unions
profiles new AFL-CIO leadership
July 1

Sundays at 5:00 pm on KCSM/60
June 2 - Aug. 20

Saturdays at 4:00 pm
Sundays at 6:00 am & 4:00 pm
Mondays at 6:00 am
on KVIE/Cable 7
May 11 - July 27

For more information: (510) 547-8484**APPOINTMENTS****PACIFIC GAS & ELECTRIC****PG&E Wage Negotiating Committee**

Anna Bayless
Mike Grill
Dan Lockwood
Jack McNally
John Mendoza
Darrel Mitchell
Robert Olson
John Petrovitz
Shirley Roberts
Russ Rylee
Howard Stiefer

1996 Generation Bargaining

Bill Butkovich
Robin David
Wayne Fippin
Dan Lockwood
Al MacLean
Larry Magnoli
Darrel Mitchell
Sam Tamimi
Tom Dalzell

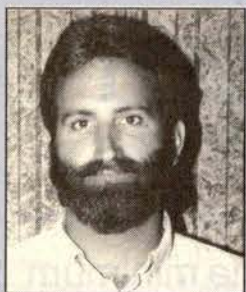


FORTIER & HARKIN
Meeting with long-time labor ally US Senator Tom Harkin aboard the USS Potomac in Oakland recently was Local 1245 Assistant Business Manager Dorothy Fortier, along with other members of the Alameda County Central Labor Council Executive Committee.

tion passed by the House last month would eliminate the Mine Safety and Health Administration and the National Institute for Occupational Safety and Health, drastically cut job training programs and terminate Trade Adjustment Assistance for workers who lose jobs due to unfair trade.

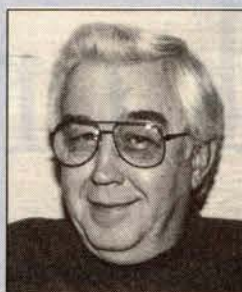
Battle at SoCal Gas: Southern California Gas workers are battling a union-busting campaign by the company, the California AFL-CIO News reported. The contract between SoCal Gas and the Utility Workers expired on April 1. The company wants to rewrite it from scratch, essentially destroying the collective bargaining relationship.

Power Station Organized: The Mine Workers scored a big organizing win as more than 180 workers at American Electric Power's Philip Sporn generating station in New Haven, W. Va., voted for UMWA representation, the AFL-CIO reported.



Brocchini

Brocchini, Davis fill vacancies



Davis

Mike Brocchini and Mike Davis have been appointed to fill vacancies in the union leadership.

Mike Davis was appointed to fill the Member-at-Large seat on the Executive Board left vacant by the resignation of Tube Dudley. Davis, who was elected as

Treasurer in 1995, served previously on the Executive Board for more than a decade.

Brocchini, the San Joaquin representative on the Local 1245 Advisory Council, was appointed to fill the Treasurer position vacated by Davis.

Fifty-year member

Local 1245 honors Russell Foxe

When Russ Foxe went to work for PG&E as a rod and chain man on a survey crew in 1945, there wasn't any question in his mind about joining the union—even though there was no union security clause requiring him to back then. "My dad was a union man and I was, too. I was brought up that way," says Foxe. "I didn't believe in people working unless they belonged to the union."

Foxe belonged to several unions before coming to PG&E, including the Machinists and an oil workers union. "I belonged to them all, wherever I worked," says Foxe. "I just believed in the union, that's all."

Foxe was honored at the Advisory Council meeting last month for his long and illustrious union service. That service included the negotiating committee in 1982-83, 12 years as unit chair in Bakersfield, 16 years as chairman of the division grievance committee, a

couple of terms on the Advisory Council in the 1960s, and 38 years as a union steward.

One of the accomplishments Foxe is proudest of was his role in bringing about the agency shop. In the early days, he says, a lot of people would join the union at bargaining time, then drop out after a contract was negotiated.

"There was no money to run the union," Foxe recalled. When members in his area signed a petition

asking the union to press PG&E for a union security clause, Foxe presented it to the Advisory Council. Soon others presented similar petitions, helping create the momentum that led to a union security clause in the contract with PG&E.

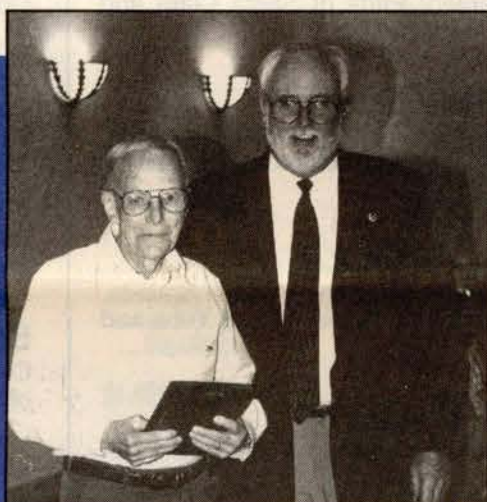
"Now we have a stable membership and don't have people dropping in and out all the time."

Even earlier, in the 1950s, Foxe was active on another issue: union dues.

"When I joined, everybody paid \$2 a month" no matter how much they earned, says Foxe. "I didn't think that was fair. So I moved that union dues be based on a percentage of how much you make."

Says Foxe: "These two things I had a very small part in. It makes me feel good that I *did* have a part."

Jack McNally presents 50-year plaque to Russell Foxe at the May Advisory Council meeting. (Photo: Landis Marttila)



PG&E sponsors "We Do the Work"

With the encouragement of Local 1245, PG&E has decided to become a 1996 corporate sponsor for the PBS labor television program "We Do the Work."

PG&E and its unions will be recognized at the beginning of each program

sponsored by PG&E.

"We Do the Work" is a nationally syndicated public television program that features stories on working people and their issues. See Page 2 for a schedule of upcoming broadcasts.

POINT OF VIEW

Your wages and the role of government

Jack McNally, IBEW 1245 Business Manager

Each time you open your pay envelope, you are opening a piece of history.

You know that your pay reflects your individual skills and efforts as a worker. You also know that your pay reflects your membership in a union, which negotiates better wages and benefits than would be available to you at a non-union employer.

But your pay also reflects something else: the efforts by workers throughout this century to get certain basic wage protections written into law.

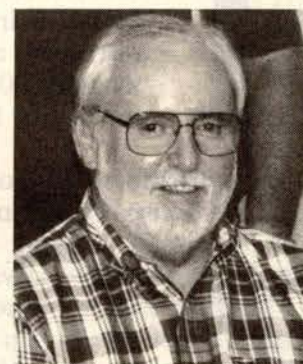
The Fair Labor Standards Act (FLSA) was signed into law in June of 1938 by President Franklin Roosevelt. The FLSA fixed the work week at 40 hours, ordered time and a half overtime pay, and established a minimum wage of 25 cents an hour. It also ended the use of child labor.

Additional protections for California workers have been written into state law. The requirement that overtime be paid after 8 hours of work in a single day, for example, is one of these protections. Most unions, including Local 1245, have used these laws as a foundation to negotiate even better wage structures for their members.

But the credit doesn't all go to the unions. With a stroke of the presidential pen in 1938, the Fair Labor Standards Act laid the foundation for the paychecks you receive today. As John L. Lewis, leader of the Congress of Industrial Organizations, told Congress in 1938, the FLSA was "the beginning of an industrial bill of rights."

Unfortunately, some very aggressive politicians are now trying to repeal those rights.

During the minimum



wage debate in Congress last month, Rep. Goodling of Pennsylvania proposed an amendment that would have abolished all minimum wage and overtime protections for over 10 million workers. (See page 4 to find out how your representative voted on this proposal.)

Other members of Congress, with active encouragement from House Speaker Newt Gingrich and outgoing Majority Leader Bob Dole, have proposed to abolish the FLSA provisions that guarantee overtime pay after 40 hours of work in a week. At the same time, in California Gov. Wilson is leading an effort to abolish the guarantee of overtime pay after 8 hours of work in day.

Even as some are trying to abolish these protections, other political leaders are attempting to extend worker protections, such as the current effort to raise the minimum wage.

Your paycheck reflects a piece of history: a history of progressive legislation designed to help working people achieve a decent standard of living. Generations ago, workers fought to win these protections. But it will be up to us to preserve them.

The attack on our wages is well underway. Now it's up to us to show that we have the strength and the will to defend them.

Sneak Attack on Overtime

The US House of Representatives voted May 23 to increase the national minimum wage by 90 cents. But that's not the whole story.

Some members of Congress attempted to use the minimum wage bill to launch a sneak attack on America's overtime laws.

The Fair Labor Standards Act requires that employers pay overtime wages for any work in excess of 40 hours a week. The overtime provisions in our union contract are rooted in this important law.

When the minimum wage bill was put up for a vote, some members of Congress tried to amend the bill. The amendment, proposed by Representative Goodling, would have eliminated both the minimum wage and the 40-hour work week for over 10 million workers who work in businesses with an annual dollar volume of less than \$500,000.

If this amendment had been adopted and passed into law, these workers could have been required to work any amount of hours their employer required—without getting any overtime pay. What's more, they could be paid \$2 an hour, \$1 an hour, even 50-cents an hour—whatever the employer could get away with.

And here's what's really disturbing: These members of Congress are not just coming after the overtime wages of workers who work for small businesses. They are coming after your overtime, too.

Anti-worker forces under the leadership of House Speaker Newt Gingrich have introduced legislation in the current Congress to abolish the 40-hour week. Under their proposal, an employer could work you up to 80 hours in a single week and not pay you a dime of overtime. Overtime pay would be required only if an employer worked you for more than 80 hours in any two-week period.

So where does your member of Congress stand on the overtime issue? Last month's vote on the Goodling amendment tells you exactly where your representative stood on a critical overtime issue affecting millions of workers. Check it out. Find out who your friends are.

The Goodling Amendment would have eliminated both the minimum wage and the 40-hour workweek for over 10 million workers. Did your representative vote to attack overtime, or to defend it?

Attacked Overtime Protections

Bill Baker, District 10

Counties Represented: Parts of Alameda and Contra Costa

Tom Campbell, District 15

Counties Represented: Parts of Santa Clara and Santa Cruz

John Doolittle, District 4

Counties Represented: Alpine, Amador, Calaveras, El Dorado, Mono, Placer, Tuolumne and part of Sacramento

Wally Herger, District 2

Counties Represented: Lassen, Modoc, Nevada, Plumas, Shasta, Sierra, Siskiyou, Trinity, Yuba and part of Butte.

Jerry Lewis, District 40

Counties Represented: Inyo and part of San Bernardino

Richard Pombo, District 11

Counties Represented: Parts of Sacramento and San Joaquin

George Radanovich, District 19

Mariposa and parts of Fresno, Madera and Tulare

Andrea Seastrand, District 22

Counties Represented: San Luis Obispo and part of Santa Barbara

William Thomas, District 21

Counties Represented: Parts of Kern and Tulare

The Representatives above (printed in black) voted to abolish overtime affecting 10 million workers.

Congress may soon be voting on a bill that would abolish overtime protections for the entire workforce.

Are these the people you want representing you when that bill comes up for a vote?

Something to remember on November 5th.

Defended Overtime Protections

Gary Condit, District 18

Counties Represented: Merced, Stanislaus and parts of Fresno, Madera, and San Joaquin

Ronald Dellums, District 9

Counties Represented: Part of Alameda

Calvin Dooley, District 20

Counties Represented: King and parts of Fresno, Kern and Tulare

Anna Eshoo, District 14

Counties Represented: Parts of San Mateo and Santa Clara

Sam Farr, District 17

Counties Represented: Monterey, San Benito and part of Santa Cruz

Vic Fazio, District 3

Counties Represented: Colusa, Glenn, Sutter, Tehama, Yolo and parts of Butte, Sacramento and Solano

Tom Lantos, District 12

Counties Represented: Parts of San Francisco and San Mateo

Zoe Lofgren, District 16

Counties Represented: Part of Santa Clara

Robert Matsui, District 5

Part of Sacramento

George Miller, District 7

Counties Represented: Parts of Contra Costa and Solano

Nancy Pelosi, District 8

Counties Represented: Part of San Francisco

Frank Riggs, District 1

Counties Represented: Del Norte, Humboldt, Lake, Mendocino, Napa and parts of Solano and Sonoma

Pete Stark, District 13

Counties Represented: Parts of Alameda and Santa Clara

Lynn Woolsey, District 6

Counties Represented: Main and part of Sonoma

You Get Money-Saving Benefits Because You're A Union Member

UNION FAMILY \$AVERS

Union membership has its advantages, and one of them is access to the Union Family Savers program. With Union Family Savers, you'll save

money on everything from car rentals to hearing care to stays at an official Walt Disney World® Hotel and more. Among the program's many discount offerings:

To find out more about these discounts, call **1-800-452-9425**



PRESCRIPTIONS BY MAIL

A unionized mail-service pharmacy that provides union members and their entire families—including spouse, children, parents, aunts and uncles—with prescription medications. Offers potential savings compared to neighborhood drugstores. Access is free.



UNION YES CHECKS

Personalized checks and return address labels featuring UNION YES and individual union logos; checks are accepted by all banks and credit unions; and both are union printed. Competitively priced at \$9.95 for 200 checks, \$6.95 for 240 labels (plus postage and handling).



NATIONAL EAR CARE PLAN (NECP)

Access to a network of hearing-care professionals nationwide; 20 percent discount on hearing health care and program hearing aids. Free six-month supply of batteries with purchase of union-made Maico hearing aids. \$10 membership fee per family, per year.



PARENT'S COLLEGE ADVISOR

The Parent's College Advisor is a guide for parents of college-bound students that provides advice on choosing the right school and the right financing package. This resource guide costs \$4.95.



WALT DISNEY WORLD® HOTEL

Special union-members-only rate at Hotel Royal Plaza, near Orlando, FL—\$89 per night during off season, \$99 per night during peak season (rates good until Dec. 23, 1996). Subject to availability.



HERTZ RENTAL CAR DISCOUNTS

20 percent off daily member benefit rates; 5 percent off leisure daily, weekly and weekend rates. Coupons available for savings on weekly rentals and upgrades.

Union Family Savers are nationally based. Your local or unions in your area may have similar union-negotiated benefits. These Union Privilege discounts may be used to supplement local discounts or sale prices. Participating retailers and program provisions (including discounts on products and services) offered through Union Family Savers are subject to change without notice. Please call 1-800-452-9425 for the latest information on program benefits.



THEME PARK DISCOUNTS

Save on admission fees, travel costs and other vacation-related purchases at any Disney or Anheuser-Busch Theme Park or at Universal Studios. Benefit includes membership in Disney's Magic Kingdom Club. Discounts at all Disney Stores, as well as Spencer Gifts Stores and at gift shops inside Universal Studios.

To find out more about Theme Park Discounts, send coupon to:

Theme Park Discounts, Union Privilege, AFL-CIO, 1125 15th St., NW, Suite 300, Washington, DC 20005

NAME _____
 ADDRESS _____

 UNION/LOCAL # _____

Automated meter reading will profoundly affect jobs at PG&E

From PAGE ONE

the area even after the pilot system is completely installed and functioning. The subcommittee will be working closely with the Meter Readers and Senior Meter Reader, mindful of the need to make the human end of

the pilot project work as well as the technological end.

The second subcommittee will focus on the work being created by AMR—the retrofitting and installation of meters, the installation of the infrastructure, and maintenance of the entire sys-

tem. Local 1245 members, including Gas Service Representatives, Troublemakers, Communication Technicians, and Meter Technicians, will be meeting with PG&E and the successful AMR vendor in an effort to assure that all new work

associated with AMR will be performed by the appropriate Local 1245 classifications.

Given the time restraints placed on PG&E by the California Public Utilities Commission, Local 1245 expects that PG&E will be

moving quickly to implement and assess the pilot project. The work of the two subcommittees will be critically important for the future success of the AMR project, and will be thoroughly covered in future issues of the *Utility Reporter*.

SAN JOAQUIN				JUL	AUG	SEP	OCT	NOV	DEC
1111	FRESNO Cedar Lanes Cedar & Shields	Chairman: C. Habecker	Tuesday 5:30 p.m.	-	6	-	8	-	10
1112	BAKERSFIELD Labor Hall 200 W. Jeffery St.	Chairman: E. Miranda	Wednesday 5:30 p.m.	10	14	11	9	13	11
1120	SELMA Ramona's 1802 E. Front St.	Chairman: P. Sandoval	Thursday 4:30 p.m.	11	15	12	10	14	12
1122	MERCED IRR. DIST. Branding Iron* 640 W. 16th	Chairman: R. Telles	Tuesday 7:30 p.m.	2	6	3	1	5	3
1123	MERCED Branding Iron 640 W. 16th	Chairman: M. Massey	Wednesday 5:30 p.m.	10	-	11	-	13	-
1128	LEMOORE Fleet Reserve 788 "D" Street	Chairman: M. Ormonde	Tuesday 5:30 p.m.	9	13	10	8	12	10
1129	AUBERRY Tony's Auberry Road	Chairman: T. Moore	Tuesday 5:45 p.m.	16	-	10	-	12	-
COAST VALLEYS									
1211	SALINAS Amer. Legion Hall 14 W. Laurel Drive	Chairman: S. Lozano	Tuesday 5:00 p.m.	9	6	3	8	5	3
1212	MONTEREY La Fontana 2030 N. Fremont	Chairman: M. Oleata	Wednesday 5:00 p.m.	17	14	11	16	13	11
1213	KING CITY PG&E Yard 2nd Street	Chairman: J. Sportsman	Thursday 4:30 p.m.	11	8	5	10	7	5
1214	MOSS LANDING Moss Landing Power Plant	Chairman:	Thursday 4:30 p.m.	18	15	12	17	14	12
1215	PISMO BEACH* Monte Carlo Cafe* Pismo Beach	Chairman: T. Castanon*	Thursday 4:00 p.m.	11	8	5	10	6	5
1216	SANTA MARIA Giavanni's Pizza Orcutt	Chairman: B. Bell	Tuesday 4:00 p.m.	9	6	3	8	4	3
1217	TEMPLETON The Pizza Place* Templeton	Chairman: F. Teague	Tuesday 4:00 p.m.	16	13	10	15	12	10
1218	MPTV CABLE La Fontana 2030 N. Fremont	Chairman: R. Shorter	Tuesday 7:00 p.m.	16	13	10	15	12	10
1219	HOLLISTER Straw Hat Pizza 191-A San Felipe	Chairman: J. Vermilyer	Wednesday 5:00 p.m.	10	7	4	9	6	4
1220	DIABLO CANYON Marge's Diner San Luis Obispo	Chairman: D. Lockwood	Wednesday 5:00 p.m.	10	7	4	9	5	4
1221	BUELLTON* Antonio's Pizza* Buellton	Chairman: D. Davey*	Monday* 4:00 p.m.*	15	12	9	14	7	9
PIPELINE									
1121	KETTLEMAN PSEA Club Kettleman Station	Chairman: S. Jamison	Tuesday 5:30 p.m.	16	-	17	-	19	-
1311	HINKLEY PSEA Rec. Room Hinkley Station	Chairman: P. Earl	Wednesday 5:30 p.m.	-	7	-	2	-	4
1313	TOPOCK Recreation Room Park Moabi	Chairman: K. Feil	Thursday 4:45 p.m.	-	8	-	3	-	5
SANTA CLARA									
1411	CITY OF SANTA CLARA Vesuvius 3044 El Camino	Chairman: B. Wallace	Thursday 5:30 p.m.	11	8	12	10	14	12
SAN JOSE									
1501	SAN JOSE CLERICAL San Jose Hyatt 1740 N. 1st Street	Chairman: B. Brill	Tuesday 6:30 p.m.	2	6	3	1	5	3
1511	SAN JOSE PHYSICAL San Jose Hyatt 1740 N. 1st Street	Chairman: B. Brill	Tuesday 6:30 p.m.	2	6	3	1	5	3
1512	BELMONT T.W.U. Local 505 1521 Rollins Road	Chairman: B. Quinn	Wednesday 5:30 p.m.	10	14	11	9	13	11
1513	SANTA CRUZ VFW Post #7263 2259 7th Avenue	Chairman: A. Freitas	Monday 6:00 p.m.	8	12	9	14	4	9
CITY OF OAKLAND				JUL	AUG	SEP	OCT	NOV	DEC
2211	OAKLAND GENERAL Francesco's Hegenberger & Pardee	Chairman: L. Rodriguez	Thursday 5:00 p.m.	18	15	19	17	21	19
EAST BAY									
2301	EAST BAY CLERICAL White Knight 3150 Pierce Street	Chairman: P. Kelleher	Wednesday 6:00 p.m.	3	7	4	2	6	4
2311	OAKLAND Francesco's Hegenberger & Pardee	Chairman: J. Audelo	Tuesday 5:30 p.m.	2	6	3	1	5	3
2314	HAYWARD/FREMONT 28827 Mission Fremont	Chairman: M. Contaxis	Thursday 6:00 p.m.	11	8	12	10	14	12
2316	CONCORD IBEW Local 1245 Walnut Creek	Chairman: P. Mackin	Thursday 7:00 p.m.	11	8	12	10	14	12
2317	ANTIOCH Aladino's Pizza* 1324 Sunset Drive	Chairman: S. Culcasi	Wednesday 5:00 p.m.*	10	14	11	9	13	11
2318	RICHMOND White Knight 3150 Pierce Street	Chairman: C. Jackson	Wednesday 4:30 p.m.	3	7	4	2	6	4
SAN FRANCISCO									
2401	SAN FRANCISCO CLERICAL Sheraton Palace 2 New Montgomery	Chairman: F. Marshall	Wednesday 5:30 p.m.	10	14	11	9	13	11
2412	SAN FRANCISCO LongShoreman's Hall* 4 Berry Street	Chairman: D. Walters	Wednesday 5:30 p.m.	3	7	4	2	6	4
STOCKTON									
2511	STOCKTON Ed Stewart Post 3110 N. West Lane	Chairman: A. Bayless	Thursday 6:00 p.m.	11	8	12	10	14	12
2512	ANGEL'S CAMP Mike's Pizza Hwy.49/MurphysGrade	Chairman: J. Sheridan	Wednesday* 4:30 p.m.*	3	1	5	3	7	5
2513	JACKSON Gold Country Pizza 525 S. Hwy 49	Chairman: D. Shulze	Tuesday 4:00 p.m.	2	6	3	1	5	3
2515	MODESTO Sundial Lodge 808 McHenry	Chairman: J. Loades	Wednesday 5:30 p.m.*	10	14	11	9	13	11
2516	LODI Angelina's 1420 W. Kettleman	Chairman: B. Fisher	Thursday 4:30 p.m.	11	1	5	3	7	5
2517	SONORA Stuft Pizza Hwy 108 East	Chairman: D. Turnes	Tuesday 4:30 p.m.	9	13	10	8	12	10
2518	MODESTO IRR. DIST. Pizza Pub* Kansas Avenue	Chairman: D. Pittman	Wednesday 4:30 p.m.*	3	7	4	2	6	4
PACIFIC GAS TRANSMISSION									
3021	SAND POINT PGT Office	Chairman: T. Anderson	Wednesday 5:00 p.m.	8	12	9	7	4	9
3023	WALLA WALLA PGT Office	Chairman: B. Beaver	Wednesday 4:30 p.m.	10	14	11	9	13	11
3024	REDMOND PGT Office	Chairman: K. Sorenson	Wednesday 5:30 p.m.	9	13	10	8	12	10
3025	SPOKANE PGT Office	Chairman: S. Jordan	Thursday 5:00 p.m.	11	15	12	10	14	12
HUMBOLDT									
3111	EUREKA Labor Temple 9th & "E" Street	Chairman: A. Koppenberg	Tuesday 7:30 p.m.	9	13	10	15	12	10
SHASTA									
3212	REDDING Big League Pizza 3655 Meadowview	Chairman: A. Streetman	Wednesday 5:15 p.m.	10	14	11	9	13	11
3213	BURNEY Sam's Pizza Johnson Park	Chairman: T. Marymee	Tuesday 6:00 p.m.	9	13	10	8	12	10
3214	RED BLUFF The Green Barn #5 Chestnut	Chairman: H. Iness	Monday 5:30 p.m.	8	12	9	7	11	9
CITY OF REDDING									
3217	CITY OF REDDING Kelley's Pizza 3655 Meadowview	Chairman: J. Kropholler	Wednesday 5:15 p.m.	3	7	4	2	6	4

UNIT MEETING SCHEDULE JULY-DECEMBER 1996

NEVADA				JUL	AUG	SEP	OCT	NOV	DEC
3311	RENO IBEW Hall LU 401 2713 E. 4th Street	Chairman: D. Moler	Wednesday 7:00 p.m.	3	7	4	2	6	4
3312	CARSON CITY Carson City Fire Dept. Station #3	Chairman: P. Lantis	Monday 5:30 p.m.	8	12	9	14	11	9
3314	SOUTH LAKE TAHOE P.J.'s*	Chairman: P. Stahl	Thursday 5:30 p.m.	11*	1	5	3	7	1
3315	MT. WHEELER/ELY Ely Fire Department Dept. Meeting Hall	Chairman: R. Miller	Wednesday 4:30 p.m.	17	21	18	16	20	18
3318	ELKO Stockman's Hotel Elko	Chairman: D. Carone*	Tuesday 6:00 p.m.	9	13	10	8	12	10
3319	WELLS R.E.C. SilverSage Sr. Ctr.* 1st Street, Wells	Chairman: C. Swift	Thursday 5:30 p.m.	18	22	19	17	21	19
3320	NORTH LAKE TAHOE Carpenter's Hall Kings Beach	Chairman: H. Bartolomei	Wednesday 5:30 p.m.	17	21	18	16	20	18
DESABLA									
3411	CHICO Mtn. Mike's Pizza 1722 N. Mangrove	Chairman: M. Hamm*	Thursday 7:30 p.m.	18	22	19	17	21	19
3412	QUINCY Moon's Pizza Lawrence Street	Chairman: J. Dolloff	Wednesday 6:00 p.m.	3	7	4	2	6	4
3417	PARADISE Red Lion Pizza 6011 Skyway	Chairman: B. Lovett	Thursday 7:30 p.m.	11*	8	5	4	7	5
DRUM									
3511	AUBURN Moose Lodge Sacramento & High	Chairman: T. Andreucci	Tuesday 6:00 p.m.	9	13	10	8	12	10
3512	ROSEVILLE Fast Freddie's Pizza 130 Main Street	Chairman: T. Bakkie	Tuesday 5:15 p.m.*	2	6	3	1	5	3
3513	GRASS VALLEY Swiss House* 535 Mill Street	Chairman: T. Gilbert	Wednesday 6:00 p.m.	10	14	11	9	13	11
3813	PLACERVILLE The Hoosgow 2864 Ray Lawyer	Chairman: P. Flecklin	Thursday 4:30 p.m.	11	8	12	10	14	12
COLGATE									
3611	MARYSVILLE Marcella's 1245 Bridge Street	Chairman: J. Edwards	Wednesday 6:00 p.m.	3	7	4	2	6	4
3613	OROVILLE Eagle's Hall 2010 Montgomery	Chairman: J. Hall	Tuesday 5:15 p.m.	16	20	17	15	19	17
NORTH BAY									
3711	MARIN COUNTY Roundtable Pizza So. Novato Blvd.	Chairman: J. Findley	Thursday 5:30 p.m.	11	8	12	10	14	12
3712	SANTA ROSA Roundtable Pizza Steele & Cleveland	Chairman: L. Stubblefield	Tuesday 7:00 p.m.	2	6	3	1	5	3
3713	EAST GEYSERS Ltl Red Schoolhouse Bottle Rock Road	Chairman: R. Runnings	Wednesday 6:00 p.m.	17	21	18	23	20	18
3714	UKIAH Discovery Inn 1340 N. State St.	Chairman: M. Perez	Wednesday 7:30 p.m.	3	7	4	9	6	4
3715	LAKEPORT Senior Center 527 Konocti Avenue	Chairman: B. Dawson	Tuesday 7:00 p.m.	2	6	3	8	5	3
3716	NAPA/VALLEJO Mary's Pizza Jefferson St, Napa	Chairman: J. Kent	Thursday 7:00 p.m.	9*	1	5	3	7	5
3717	FORT BRAGG/PT ARENA Masonic Temple 428 N. Main	Chairman: G. Fernandez	Thursday 5:00 p.m.	18	22	19	24	21	19
3718	WEST GEYSERS Sergio's Restaurant Healdsburg Avenue	Chairman: A. MacLean	Tuesday 6:30 p.m.	16	20	17	22	19	17

SACRAMENTO				JUL	AUG	SEP	OCT	NOV	DEC
3011	SACRAMENTO REGIONAL TRANSIT Club 65 65th & Broadway	Chairman: W. Nunez*	Thursday 4:45 p.m.	11	8	12	10	14	12
3811	SACRAMENTO Florin Odd Fellow 8360 Florin Road	Chairman: D. Norris	Wednesday 5:00 p.m.	3	7	4	2	6	4
3812	VACAVILLE 140 Browns Vly Pkwy* Vacaville	Chairman: B. Semas	Tuesday 5:00 p.m.	9	13	10	8	12	10
3814	WOODLAND Amer. Legion Hall 523 Brush Street	Chairman: K. Stice	Thursday 5:30 p.m.	11*	1	5	3	7	5
3911	SMUD Ctrl.Labor Council El Centro & I-80	Chairman: G. Richie	Wednesday 5:00 p.m.	10	14	11	9	13	11
3912	FRESH POND (SMUD) 50 Grand Pollock Pines	Chairman: D. Newton*	Tuesday 6:00 p.m.	9	13	10	8	12	10
3914	GEYSERS (SMUD/CCPA) Ltl Red Schoolhouse Bottle Rock Road	Chairman: K. Alvey*	Wednesday 6:15 p.m.	17	21	18	23	20	18
CITIZENS TELECOMMUNICATION COMPANY*									
4012	SUSANVILLE Grande Cafe 730 Main Street	Chairman: J. Deal	Thursday 5:15 p.m.	11	15	12	10	14	12
4013	ALTURAS The Brass Rail Hwy. 395	Chairman: M. Nelson	Wednesday 5:30 p.m.	10	14	11	9	13	11
4014	ELK GROVE Pizza Barn 8610 Elk Grove	Chairman: D. Vipond	Thursday 5:30 p.m.	18	22	19	17	21	19
4015	BURNEY* Sam's Pizza Hwy 299 East	Chairman: D. Trobridge	Tuesday 5:30 p.m.	2	6	3	1	5	3
TREE TRIMMERS									
4404	DAVEY TREE/OAKLAND Francesco's Hegenberger & Pardee	Chairman: I. Reynolds	Tuesday 6:30 p.m.*	2	6	3	1	5	3
4406	DAVEY TREE/PARADISE Red Lion Pizza 6011 Skyway	Chairman: E. Anton	Thursday 5:30 p.m.	11*	8	5	4	7	5
4419	DAVEY TREE/REDDING Upper Crust Pizza 2727 Churn Creek	Chairman: B. Erwin	Wednesday 5:00 p.m.	17	21	18	16	20	18
4420	DAVEY TREE/NAPA Pietro's 999 Trancas Street	Chairman: M. Linley	Tuesday 7:00 p.m.*	16	20	17	15	19	17
4422	ARBOR TREE The Players Atascadero	Chairman: T. Bundy	Thursday 4:00 p.m.*	18	15	12	17	14	12
4711	ASPLUNDH TREE Mtn. Mike's Pizza Redwood City	Chairman: D. Sanchez	Wednesday 5:30 p.m.	17	21	18	16	20	18
OUTSIDE LINE									
4911	OUTSIDE LINE/SACRAMENTO 2840 El Centro Sacramento	Chairman: L. Thomson	Saturday 10:00 a.m.	13	10	7	12	9	7
4912	OUTSIDE LINE/RIVERSIDE 1074 LaCadena Dr #5 Riverside	Chairman: J. Johnstone	Wednesday 8:00 p.m.	10	14	11	9	13	11
4913*	SO. CALIF. TELECOMMUNICATIONS* 1074 LaCadena Dr #5* Riverside	Chairman: V. Buchanan*	Saturday* 10:00 a.m.*	13	10	14	12	9	14



Attend Your
Unit Meetings!

* Indicates recent change

FINANCIAL STATEMENT

IBEW Local 1245 FINANCIAL STATEMENT

FOR THE YEAR ENDED
DECEMBER 31, 1995

INDEPENDENT AUDITOR'S REPORT

March 14, 1996

To the Officers and Members of the
International Brotherhood of Electrical Workers, Local No. 1245
Walnut Creek, California

We have audited the accompanying statement of Assets, Liabilities and Equity arising from cash transactions as of December 31, 1995 and the related Statement of Cash Receipts and Disbursements of the International Brotherhood of Electrical Workers, Local No. 1245 for the year ended December 31, 1995. These financial statements are the responsibility of the union's management. Our responsibility is to express an opinion on these financial statements based on our audit.

We conducted our audit in accordance with generally accepted auditing standards. Those standards require that we plan and perform the audit to obtain reasonable assurance about whether the financial statements are free of material misstatement. An audit includes examining, on a test basis, evidence supporting the amounts and disclosures in the financial statements. An audit also includes assessing the accounting principles used and significant estimates made by management, as well as evaluating the overall financial statement presentation. We believe that our audits provide a reasonable basis for our opinion.

As described in Note 1, these financial statements are prepared on the basis of cash receipts and disbursements, which is a comprehensive basis of accounting other than generally accepted accounting principles, accordingly the accompanying statements are not intended to present financial positions and results of operations in conformity with generally accepted accounting principles.

In our opinion, the accompanying financial statements referred to above present fairly, in all material respects, the cash transactions of Local No. 1245 for the year ended December 31, 1995 and its assets, liabilities and equity at December 31, 1995 in accordance with the basis of accounting described in Note 1 to the statement.

DALMAS ACCOUNTANCY CORP.
Certified Public Accountant

EXHIBIT A INTERNATIONAL BROTHERHOOD OF ELECTRICAL WORKERS LOCAL NO. 1245 STATEMENT OF ASSETS, LIABILITIES AND EQUITY ARISING FROM CASH TRANSACTIONS December 31, 1995

ASSETS

Cash Accounts and Stock Fund at cost:		
General Fund:		
Wells Fargo Bank - checking accounts	\$ 348,029.82	
Wells Fargo Bank - market rate account (Note 6)	1,959,123.04	\$2,307,152.86
Certificates of deposits		610,792.72
Variable Rate Government Fund at FMV (Note 1)		1,571,543.68
Cash Funds		5,350.00
Total General Fund		\$4,494,839.26
Checking Account - Political Donation Fund		8,847.77
Total current assets		4,503,687.03
200 shares PG&E common stock - at cost		3,388.17
Air Transportation deposit		425.00
Loans receivable from Energy Workers Center, Inc. (Note 2, 4)		23,281.39
Francella memorial		7,000.00
Fixed assets (Note 1):		
Automobiles (47) at cost	773,156.05	
Less: allowance for depreciation	772,010.31	1,145.74
Furniture and office equipment - at cost	852,081.27	
Less: allowance for depreciation	631,896.29	220,184.98
Total assets		\$4,759,112.31

LIABILITIES AND EQUITY

Liabilities:		
IBEW per capita portion of December receipts to forward	\$ 159,167.50	
Prepaid dues - PG&E	656,565.71	
Current liabilities		\$ 815,733.21
Equity:		
General Fund	3,934,531.33	
Political Donation Fund	8,847.77	3,943,379.10
Total liabilities and equity		\$4,759,112.31

The accompanying Report and Notes are an integral part of these financial statements.

EXHIBIT B INTERNATIONAL BROTHERHOOD OF ELECTRICAL WORKERS LOCAL NO. 1245 STATEMENT OF CASH RECEIPTS AND DISBURSEMENTS For the Year Ended December 31, 1995

POLITICAL DONATION FUND

Cash balance, December 31, 1994	\$ 10.15
Receipts:	
Portion of local union dues deposited directly to this fund	18,747.00
Reversal of bank service charges	29.62
Void Check	3.00
Total receipts and balance	18,789.77
Disbursements:	
Steve Peace State Senator	1,000.00
Oakland Citizens for Street Lights & Clean Parks	250.00
Friends of Sheila Jordan	198.00
Lochyer for Senate Committee	3,500.00
Republicans Democrats for Machado	500.00
Willie Brown for Mayor	1,500.00
Committee to Elect Diane Martinez	500.00
Central Council Cope Dinner	600.00
Committee to Elect Cecil O. Hensley	99.00
Mike Nevin	100.00
Marin Labor Council	120.00
San Mateo Labor Council	675.00
South Bay Labor Council - Cope	900.00
Cash balance, December 31, 1995	
Wells Fargo checking account	\$ 8,847.77

FINANCIAL STATEMENT

The accompanying Report and Notes are an integral part of these financial statements.

EXHIBIT C
INTERNATIONAL BROTHERHOOD OF ELECTRICAL WORKERS
LOCAL NO. 1245
STATEMENT OF CASH RECEIPTS AND DISBURSEMENTS
For the Year Ended December 31, 1995

GENERAL FUND

Cash balance, beginning December 31, 1994		<u>\$3,624,147.13</u>
Receipts:		
Local Union portion of receipts:		
"A" members' dues	\$ 92,186.67	
"BA" members' dues	6,543,855.46	
Initiation fees	19,765.41	
Reinstatement fees	487.00	
Agency fees	72,696.40	
Working dues	71,510.88	
Difference in dues	3,707.77	
Retirement Club dues	<u>19,181.00</u>	6,823,390.59
Reimbursements to General Fund:		
Interest and investment income	210,574.39	
Dividends	392.00	
Workmens compensation dividends	47,171.70	
Refunds and reimbursements:		
Loan payments - Energy Workers Center:		
Interest	2,289.46	
Principal	17,216.78	
Union Shopper	5,689.90	
Other receipts	<u>14,970.52</u>	298,304.75
International portion of receipts:		
"A" members' per capita	190,313.15	
"BA" members' per capita	1,569,394.00	
Initiation fees	19,765.40	
D.B.A.F. fees	86.00	
Reinstatement fees	2,390.00	
Agency fees	21,662.00	
Difference in per capita	<u>2,524.90</u>	<u>1,806,135.45</u>
Total receipts		<u>8,927,830.79</u>
Total balance and receipts		12,551,977.92
Disbursements, per Page 10 of Schedule of Disbursements		<u>8,713,704.37</u>
Cash balance, December 31, 1995		<u>3,838,273.55</u>
Plus: Prepaid Dues - PG&E		<u>656,565.71</u>
Cash balance, December 31, 1995, Details in Statement of Assets, Liabilities and Equity		<u>\$4,494,839.26</u>

The accompanying Report and Notes are an integral part of these financial statements.

INTERNATIONAL BROTHERHOOD OF ELECTRICAL WORKERS
LOCAL NO. 1245
SCHEDULE OF CASH DISBURSEMENTS
For the Year Ended December 31, 1995

GENERAL FUND

Affiliation fees:		
International Brotherhood of Electrical Workers	\$1,853,974.89	
San Francisco C.L.C.	5,400.00	
Santa Clara C.L.C.	8,580.00	
Alameda C.L.C.	9,600.00	
Northern Nevada C.L.C.	1,650.00	
Nevada State AFL-CIO	4,200.00	
Nevada State Electrical Association	588.00	
Sacramento C.L.C.	9,600.00	
Contra Costa C.L.C.	7,200.00	
California Federation of Labor	66,500.00	
California State Association of Electrical Workers	33,600.00	
Marin County C.L.C.	819.00	
San Joaquin and Calaveras C.L.C.	2,100.00	
Butte-Glenn C.L.C.	780.00	
Napa-Solano C.L.C.	1,926.00	
Kern-Inyo-Mono C.L.C.	1,350.00	
Fresno-Madera C.L.C.	3,000.00	
Sonoma, Mendocino, Lake C.L.C.	1,920.00	
Merced-Mariposa C.L.C.	1,350.00	
Stanislaus-Tuolumne C.L.C.	1,116.00	
Marysville C.L.C.	480.00	
Humboldt-Del Norte C.L.C.	603.00	
Five Counties C.L.C.	852.00	
Monterey County C.L.C.	784.00	
Government Coordinating Council	600.00	
San Mateo C.L.C.	3,000.00	
Idaho State AFL-CIO	137.76	
Coalition California Utility Workers	3,399.00	
Joint Executive Conference-S.C. Electrical Workers	60.00	
Joint Executive Conference-N.C. Electrical Workers	100.00	
Tri Counties C.L.C.	1,920.00	
California Labor Federation-Retirees dues	12.00	
Congress of California Seniors	24.00	
Forum-Alameda Retired Members	52.00	

Maritime Trades Post Council	420.00
C.L.O.C.	12,600.00
TCC-6	592.50
9th District Manufacturing	120.00
North Eastern Nevada C.L.C.	300.00
Calif. Coalition Utility Workers	17,091.50
C.U.E.	<u>106,722.00</u>
	2,165,123.65

Staff expenses:	
Salaries	\$2,817,679.54
Expenses	255,422.23
Automobile expenses	18,203.55
Administrative expenses	562.77
Fitness plan	<u>1,619.75</u>
	3,093,487.84

Research and Education:	
Subscriptions and publications	20,889.42
Public relations	418.18
Scholarship fund	<u>2,000.00</u>
	23,307.60

Office salaries:	
Administration office salaries	205,588.90
Bargaining unit salaries	<u>354,896.18</u>
	560,485.08

Office expenses:	
Rent	119,281.20
Telephone	139,462.34
Postage mail service and meter expense	56,194.43
Print room/printing	28,394.81
Supplies	15,530.76
Equipment maintenance	14,918.41
Data processing	91,820.95
Equipment rental	592.77
Utility reporter	88,950.14
Miscellaneous	36,484.26
Bank charges	416.03
Furniture and equipment purchases	33,708.41
Utilities and janitorial	2,760.00
Christmas cards	317.00
Storage	<u>2,860.00</u>
	631,691.51

	Salaries Paid or Reimbursed	Expenses	Total
Committee salaries and expenses:			
Executive Board meetings	\$ 11,600.99	\$ 16,317.60	\$ 27,918.59
Advisory Council	11,290.98	55,717.03	67,008.01
Trustee Committee	8,183.46	3,888.94	12,072.40
Review Committee	221.09	1,292.29	1,513.38
Safety Committee	12,865.82	8,485.19	21,351.01
Shop Steward expenses	9,105.48	21,244.84	30,350.32
Other conferences	8,204.44	37,958.60	46,163.04
Labor Management		8,691.00	8,691.00
J.T. Grievance		796.04	796.04
Grievance/FF/LIC	575.84	3,834.72	4,410.56
Regional S/S Conference	4,885.64	37,864.54	42,750.18
Executive Board Trail Board		204.67	204.67
Leadership		<u>142.60</u>	<u>142.60</u>
	<u>66,933.74</u>	<u>196,438.06</u>	<u>263,371.80</u>

Various Other Committees:			
Citizen Utility		334.89	334.89
Sierra Pacific Power	49,271.93	3,239.61	52,511.54
U.S. Bureau of Reclamation	677.68	1,410.39	2,088.07
Outside Line	775.36	2,367.77	3,143.13
Sacramento Muni Utilities District	40,911.74	1,390.54	42,302.28
Regional Transit	3,702.41	6,998.83	10,701.24
P.U.C.- Cost & Expense	190.64	1,357.18	1,547.82
C.P.U.C. Campaign		63,140.03	63,140.03
Retirees		688.05	688.05
Local Union Election	15,913.98	12,652.28	28,566.26
Outside Line Conference		4,651.56	4,651.56
AT&T General Negotiations		114.73	114.73
Pacific Gas Transmission	37,140.34	5,098.78	42,239.12
Organizing Expenses		22.79	22.79
Modesto Irr. District	4,888.10	2,188.02	7,076.12
Merced I.D.	345.76	350.66	696.42
City of Oakland		1,097.93	1,097.93
Davey Tree	4,555.28	4,946.42	9,501.70
Arbor Tree	415.20	132.16	547.36
Truckee Donner P.U.D.	7,485.48	701.81	8,187.29
Tri-dam		134.91	134.91
Paradise I.D.	78.48	203.63	282.11

See NEXT PAGE

FINANCIAL STATEMENT

From PAGE NINE

INTERNATIONAL BROTHERHOOD OF ELECTRICAL WORKERS LOCAL NO. 1245 SCHEDULE OF CASH DISBURSEMENTS For the Year Ended December 31, 1995

GENERAL FUND (continued)

Various Other Committees (Continued):

City of Berkeley	370.08	295.03	665.11
Wapa	825.60	897.58	1,723.18
City of Healdsburg		10.00	10.00
Bureau of Alameda-Gen. Neg.		10.35	10.35
Sonic Cable	1,749.56	1,205.13	2,954.69
City of Redding	(593.04)	193.92	(399.12)
A.C. Transit		600.00	600.00
Century-Cable		40.42	40.42
Oakdale I.D.	264.17	230.27	494.44
MPTV Cable	257.92	968.54	1,226.46
Nevada I.D.		244.07	244.07
So. San Joaquin		189.72	189.72
City of Fallon		174.66	174.66
Western TV Cable	123.36	86.21	209.57
City of Santa Clara	164.61	79.06	243.67
City of Lodi		450.62	450.62
Plumas-Sierra Rural		62.64	62.64
City of Roseville		306.45	306.45
Asplundh	532.72	1,500.31	2,033.03
Mt. Wheeler		328.28	328.28
City of Shasta		470.82	470.82
Foster Wheeler	2,387.15	661.65	3,048.80
Lindmore I.D.		133.12	133.12
Bella Vista		57.15	57.15
	<u>172,434.51</u>	<u>122,418.97</u>	<u>294,853.48</u>

PG&E Negotiating Committees:

Departmental:

Arbitration	\$ 901.29	13,149.60	14,050.89
Interim Negotiations		1,321.72	1,321.72
Diablo Canyon	1,214.44	511.94	1,726.38
Gas servicemen		136.00	136.00
Negotiations		248.05	248.05
Re-rate	1,250.73	34.56	1,285.29
Clerical job	1,659.87	397.46	2,057.33
Misc. general office	2,241.46	196.88	2,438.34
EMF Neg. Comm.	2,189.95	173.90	2,363.85
G.C. negotiations		29.98	29.98
Transmission		9.09	9.09
Steering Committee		638.85	638.85
Helicopter Committee		416.24	416.24
Telep Consolidated	202.78	2,489.87	2,692.65
CNO Committee		51.00	51.00
Relocation Clerical/Phys.	6,663.07	4,040.13	10,703.20
Meter Readers	327.68	294.82	622.50
Temp Position		248.30	248.30
PLO		41.77	41.77
Ad HOC		57.12	57.12
	<u>16,651.27</u>	<u>24,487.28</u>	<u>41,138.55</u>

Membership expenses:

Supplies-Local		\$ 4,881.12	
Supplies-Intl.		1,662.25	
Union shopper purchases		5,595.60	
Lineman Rodeo		7,889.71	
Miscellaneous Fees		3,765.72	
		<u>23,794.40</u>	

Membership benefits:

Group life insurance		92,676.36	
Unit drawing award		600.00	
Individual drawing award		600.00	
Service award dinners		8,969.09	
Social fund		9,900.00	
Flowers and donations		1,415.60	
Memorial bibles		244.46	
Baseball Tournament		1,130.12	
Fair give-a-way		1,888.06	
		<u>117,423.69</u>	

Payroll taxes:

Employee portion:		
U.S. income tax withheld		\$ (543,209.70)
California income tax withheld		(144,413.06)
FICA withheld		(155,383.13)
SDI withheld		(15,749.04)
U.S. income tax forwarded		543,209.70
California income tax forwarded		144,413.06
FICA forwarded		155,383.13
SDI forwarded		15,749.04
Local Union portion:		
FICA		220,800.53
California Unemployment		10,518.98
U.S. Unemployment		3,276.79
		<u>234,596.30</u>

Employee benefits:

Health and Welfare plans		437,314.47
Group life insurance		76,250.19
Pension plan (Note 5)		465,666.35
Other costs, pension plans		41,826.92
Administration fees, pension plan		6,042.27
		<u>1,027,100.20</u>

Other disbursements:

Legal fees		\$ 5,379.59
Hall rentals		63,556.78
Workmen's compensation insurance		61,344.74
Refunds		3,578.50
Audit fees		10,440.00
PRD fees		7,060.92
Charitable donations		3,950.00
Payroll deductions - 401K, savings, credit union dues		25.00
Insurance bond		5,322.00
Insurance-professional liability		15,245.87
Insurance-auto		35,158.00
Insurance-property		896.59
Miscellaneous taxes		2,068.07
Miscellaneous		84.70
Local Union Election O/S Computer		1,100.00
Local Union Election Sequoia Pacific		22,119.51
		<u>\$ 237,330.27</u>

Total General Fund Disbursements

\$8,713,704.37

Retirees stay in touch with union concerns

By Orv Owen

Retirees from the East Bay, Bakersfield and San Jose Local 1245 Retiree Club chapters attended the quarterly joint meeting of the union's Executive Board and Advisory Council last month to keep updated and informed on the current and future problems affecting working people and their families, including members of Local 1245.

Representing the Bakersfield chapter was Russell Foxe, who received his 50-year Local 1245 membership award. (See story, page 3).

Representing the East Bay retirees were Don Hardie, who is one of the original organizers of our union, and Louie Rangel. Representing the San Jose chapter were Richard Murphy, Jack Hill and myself.

Gene Hastings and Tom Riley, who were also among the early organizers of our union and of the Retirees Club, were unable to attend due to health. Former Local 1245 Recording Secretary Barbara Symons, who recently retired in Santa Rosa, also attended the meeting.

It was apparent that our activist retirees still share the bond of brotherhood and sisterhood with Local 1245 and its members. As seniors

we recognize the importance and the necessity of maintaining our communications with the local union and the labor movement.

With the fast-approaching state and national elections, it is extremely important that all citizens of this great country accept the privilege

and responsibility of citizenship to understand the issues and candidates, and then vote!

Keep the faith!



Retiree Club members from the East Bay, San Jose, and Bakersfield areas attended last month's Advisory Council meeting to stay current on union issues and concerns. (Photo: Landis Marttila)

Gov. Wilson shows contempt for elderly

California Gov. Pete Wilson showed an astonishing contempt for senior citizens last month when he proposed cutting benefits for the elderly, blind and disabled to balance his revised \$59 billion budget for the next fiscal year.

The proposed cuts came only days after the announcement that tax revenues are pouring into the state treasury at a pace far higher than expected.

Even some members of Wilson's own party expressed dismay that he

Despite better than expected tax revenues, Wilson wants to cut benefits for the elderly and poor.

would propose such cuts in light of the state's improving financial picture.

"I really don't support him," said Barbara Alby, a Republican Assemblywoman from Fair Oaks who chairs a key budget-writing subcommittee. Her comments were reported by the San Francisco Chronicle.

Currently, an elderly or disabled recipient of Supplemental Security Income (SSI) receives \$626 a month, and a couple receives \$1,101.

The SSI program is administered by the federal government, with the state picking up a share of the cost.

Congratulations to the newly-retired!

The Local 1245 Retirees Club extends its congratulations to these recently-retired members of Local 1245. We encourage you to get involved with the Local 1245 Retirees Club Chapter in your area. If there isn't one, start one! Call (510) 933-6060 and ask for Julie Rodriguez.

Name	Residence	Yrs/Srv
Bryant Bolen	Martinez, Ca.	38
Keith Holland	Berkeley, Ca.	35
Esther Keck	San Bruno, Ca.	18
James Murphy	Bakersfield, Ca.	41
Don Norris	Watsonville, Ca.	34
Joan Reed	Ann Arbor, MI	23
Barbara Roberts	Placerville, Ca.	18
Lloyd Roberts	Sacramento, Ca.	36
Salvador Romero	Wapato, Wa.	23
Alan Simila	Brentwood, Ca.	23
Ronald Thomasen	Watsonville, Ca.	35

NCSC provides good way to stay informed

The National Council of Senior Citizens provides an excellent way for retired union members to stay informed on important issues, including Social Security, Medicare, Medicaid, nursing homes and elderly abuse.

To become an NCSC member, fill in the coupon and send it along with a check or money order to NCSC Membership Dept., 1331 F Street, N.W., Washington, D.C. 20004-1171.

For more information, call:
California- (916) 429-0295
Nevada- (702) 267-4411

Individual/Couple	One Year <input type="checkbox"/> \$12	Three Years <input type="checkbox"/> \$30	Lifetime <input type="checkbox"/> \$150
<input type="checkbox"/> I am a new member <input type="checkbox"/> I am a member. Please add my spouse.			
<u>Please print</u>			
Name _____			
Spouse's First Name (if applicable) _____			
Address _____			
City _____ State _____ Zip _____			
Date of Birth _____			
Date of Birth (spouse) _____			

IBEW
Local
1245



Retirees Corner

Kmart, cops & discrimination

U.S. marshals collected over \$45,000 from cash registers at two Kmart stores in suburban Miami, San Mateo County Labor reported.

KMart had been slow to post a \$2 million bond in its appeal of a federal court verdict holding KMart guilty of age discrimination in the firing of three pharmacists. KMart replaced 60-something pharmacists with 20-somethings in a quest for "a more youthful image."

A jury awarded the older pharmacists \$2.17 million in back pay, punitive and other damages (later reduced by a judge to \$920,000). A third cash register raid was planned but called off after KMart posted the bond.

**Register
to Vote!**

Do it by mail. Call:

1-800-345-VOTE



Unfair to Labor!

Please Don't Patronize



Hotels, Restaurants & Theme Parks

All **Marriott Hotels** in California with the specific exception of the **Marriott Hotel at Fisherman's Wharf** in San Francisco and the **Oakland Marriott City Center Hotel**, which are union houses.

All non-union **Kimpton Group** hotels and restaurants in California.

Shilo Inns at Corning, Yosemite, Delano, Mammoth Lakes, Diamond Bar, and Palm Springs Resort.

Taco Bell: All Taco Bell fast food outlets in California except those located in Santa Clara and San Benito counties.

Contra Costa County

Lafayette Park Hotel, 3287 Mt. Diablo Blvd., Lafayette.

Scott's Bar & Grill, Walnut Creek.

Fresno County

Holiday Inn Fresno Airport Hotel, 5090 East Clinton at the airport.

Holiday Inn Fresno Centre Plaza Atrium Hotel and Convention Center, 2233 Ventura St. at Highway 99.

Los Angeles Area

Beverly Prescott Hotel and Rox restaurant.

The Sheraton Los Angeles Airport, 6101 West Century Blvd.

University Hilton Hotel, 3540 South Figueroa St.

Monterey Area

Asilomar Conference Center, Pacific Grove.

Casa Munras, Fremont and Munras, Monterey.

Doubletree Inn, 2 Portola Plaza, Monterey.

Days Inn, 1400 Del Monte Blvd., Seaside.

Monterey Plaza, 400 Cannery Row, Monterey.

Sheraton Hotel, 350 Calle Principal, Monterey.

Napa

Napa Elks Lodge No. 832 bar and restaurant, 2480 Soscol Ave., Napa.

Napa Valley Lodge, 2230 Madison St., Yountville.

Oakland

Scott's Restaurant, 73 Jack London Square.

Ontario

Ontario Red Lion Inn.

Oxnard

Opus I Restaurant, in the Embassy Suites Hotel.

Oxnard Financial Plaza Hilton Hotel, 600 Esplanade Drive.

Sacramento Area

Andiamo!, 3145 Folsom Blvd.

Auburn Joe's, 13480 Lincoln Way, Auburn.

All Black Angus.

Broiler Restaurant, 1013 J St., Sacramento.

California Fats, 1015 Front St., Old Sacramento.

All Chevy's.

Courtyard, 10683 White Rock Rd., Rancho Cordova.

All Days Inns.

Delta King, 1000 Front St., Old Sacramento.

All Denny's.

Discovery Inn, 350 Bercut Drive.

The California Labor Federation has placed the following firms on its "We Don't Patronize" list. Firms are placed on this list after a written request from an affiliated union has been approved by the Federation's Executive Council. All friends of labor are urged to avoid patronizing these firms. Remember: they are not fair to their employees!

Distillery, 2107 "L" St.

All Eppie's Restaurants.

Fox and Goose, 1001 "R" St.

Frank Fat's, 806 "L" St.

Frasinetti Winery & Restaurant, 7395 Frasinetti Rd., Florin.

Fat City Bar & Cafe, 1001 Front St., Old Sacramento.

Fulton's Prime Rib Inn, 906 Second St., Old Sacramento.

Harbor Inn, 1250 Halyard Dr., West Sacramento.

Hoffman's, 808 "O" St.

Hyatt Regency Hotel, L Street between 12th and 13th Streets opposite Capitol Park.

Kallies, 7770 Stockton Blvd., Sacramento.

Limelighter Bar, Restaurant & Card Room, 1014 Alhambra Blvd.

All Lyons.

All Marriott Courtyards and All Marriott Residence Inns within jurisdiction of Sacramento Central Labor Council.

Max's Opera Cafe, Arden Fair Shopping Center.

Melarky's, 1517 Broadway.

Palomino Room, 3405 El Camino Ave.

Red Lion Inn, 2001 West Point Way, Sacramento.

Residence Inn, 1530 Howe Ave., Sacramento.

Rodeway Inn, I-80 & Wyatt Avenue, North Highlands.

Sacramento Capitol Club, 400 Capitol Mall, Suite 600.

Sacramento Inn, Arden Way at Interstate 80, Sacramento.

Sacramento Joe's, 2052 Sacramento Blvd.

Sandman Motel, 236 Sibboom St., Sacramento.

Sheraton Sunrise Hotel, Sunrise Blvd. at Highway 50.

Shot of Class, 1020 11th St.

All Sixpence Inns.

The Nut Tree and Coffee Tree, Vacaville between Sacramento and San Francisco on Interstate 80.

Vagabond Inn, 909 3rd St.

Vince's Restaurant & Bar, 840 Harbor Blvd., West Sacramento.

San Diego Area

Anthony's Restaurants, 166 Solana Hills Dr., Solana Beach; 215 Bay Blvd., Chula Vista; 9530 Murray Dr., La Mesa; 1360 Harbor Dr., San Diego; 1355 Harbor Dr., San Diego; 11666 Avena Place, San Diego.

Bali Hai Restaurant, 2232 Shelter Island Dr., San Diego.

Hob Nob Restaurant, 2271 First Ave., San Diego.

Holiday Inn Bayside, 4875 North Harbor Drive, San Diego. (Not to be confused with Holiday Inn at the Embarcadero, which is a union house.)

San Diego Princess (formerly Vacation Village), 1404 W. Vacation Rd., San Diego.

Tom Ham's Light House, 2150 Harbor Island Dr., San Diego.

San Francisco

Alfred's, 886 Broadway.

Alioto's No. 8, Fisherman's Wharf.

Bellevue Hotel.

Benihana of Tokyo, 1737 Post St.

Campton Place Hotel, 340 Sutter St.

Emporio Armani.

Ernie's, 847 Montgomery St.

Fisherman's Grotto No. 9, Fisherman's Wharf.

Galleria Park Hotel, 191 Sutter St.

Harbor Court and Harry Denton's Bar and Grill, 165 Stuart St.

Jack in the Box, all locations.

Juliana Hotel, 590 Bush St.

Liberte (Elka Gilmore's Liberte.)

The Mandarin, Ghirardelli Square.

Mandarin Oriental Hotel, 333 Sansome St.

McDonald's, all locations.

Monticello Inn and Abiquiu, 227 Ellis St.

Nikko Hotel, 22 Mason St.

North Beach Restaurant, 1512 Stockton St.

Park Hyatt, 333 Battery St.

Perry's, 1944 Union St.

Pompei's Grotto, Fisherman's Wharf.

Prescott Hotel, 545 Post St.

Richelieu Hotel, Van Ness Ave.

A. Sabella's Fisherman's Wharf.

H. Salt Fish and Chips, all locations.

Col. Saunders Kentucky Fried Chicken, all locations.

Schroeder's, 240 Front St.

Sir Francis Drake Hotel, Scala's, Starlight and Cafe Espresso.

Splendido Restaurant, Embarcadero 4.

Tia Margarita, 19th Ave. and Clement St.

Trinity Suites, Eighth and Market Streets.

Triton Hotel, Aioli Restaurant and Cafe de la Presse, Grant and Bush.

Tuscan Inn and Cafe Pescatore, 425 North Point St.

Vanessi's, 1177 California St.

Victorian Hotel, 54 Fourth St.

Villa Florence Hotel with Kuleto's Italian Restaurant and Cafe Kuleto, 225 Powell St.

Vintage Court Hotel and Masa's, 650 Bush St.

San Mateo County

Half Moon Bay Lodge, 3400 S. Coast Highway #1, Half Moon Bay.

Stanford Park Hotel, 100 El Camino Real, Menlo Park.

Santa Clara County

DeAnza Hotel, 233 W. Santa Clara St., San Jose.

House of Genji/Cathay Restaurant, 1335 N. First St., San Jose.

Holiday Inn-Palo Alto, 625 El Camino Real, Palo Alto.

Mariani's Inn and Restaurant, 2500 El Camino Real, Santa Clara.

Max's Club, Gilroy.

Red Lion Inn at Gateway Place.

Santa Barbara Area

El Encanto Hotel and Garden Villas.

Sonoma and Marin

Bodega Bay Lodge, 103 Coast Highway #1, Bodega Bay.

Hodge Food Service and all food service facilities owned and/or operated by them, including **La Cantina and Cal Asia**.

Los Robles Lodge, 925 Edwards Ave., Santa Rosa.

Stockton Area

Carmen's Mexican Restaurant, Lincoln Center.

Hilton Hotel, 2323 Grand Canal Blvd.

Stockton Inn Motel and Restaurants, 4219 Waterloo Rd. at Hwy. 99.

Las Vegas, Nev.

Frontier Hotel and Casino

Sparks, Nevada

John Ascuaga's Nugget.

Manufacturing

Chir-Hit Displays, Santa Clara County.

Color & Design Exhibits, San Jose.

Diamond Walnut Co., Stockton: all products.

Gaffers & Sattler products.

Goehring Meat Co., Lodi.

Louisiana-Pacific Corp.: all products.

Printing

Petaluma Argus Courier.

San Francisco Bay Guardian.

Vallejo Times-Herald.

New York Times (Northwestern Edition).

Theaters

Santa Cruz Area

Twin I & II Theaters, Aptos.

San Francisco

Alexandria, Balboa, Coronet, Coliseum, Metro, Stonestown Twin and Vogue (all United Artists) and **Cinema 21 and Empire** (Syufy).

Sacramento Area

Capitol Theater; Century 21, 22, 23, 24 and 25 Theaters (Syufy); **State Theater; Sacramento 6 Drive-In**.

Orange County

All United Artists Theaters in Orange County.

All Freedman Forum Theaters in Anaheim; **Cineland Theater**, Anaheim; **Brookhurst-Loge Theater**, Anaheim.

Valley View Twin Cinemas, Cypress; **Family Four Cinemas**, Fountain Valley; **Fox Fullerton**, Fullerton.

Syufy Cinedome, Stadium Drive-In and City Cinemas, all in Orange; **Villa Theater**, Orange; **Miramar Theater**, San Clemente; **Broadway Theater**, Santa Ana; **Stanton Theater**, Stanton.

Syufy Cinedome, Stadium Drive-In and City Cinemas, all in Orange; **Villa Theater**, Orange; **Miramar Theater**, San Clemente; **Broadway Theater**, Santa Ana; **Stanton Theater**, Stanton.

Syufy Cinedome, Stadium Drive-In and City Cinemas, all in Orange; **Villa Theater**, Orange; **Miramar Theater**, San Clemente; **Broadway Theater**, Santa Ana; **Stanton Theater**, Stanton.

Automotive

British Motor Car Distributors, Ltd., 901 Van Ness Ave.

European Motors, 950 Van Ness Ave.

German Motors Corp., 1765 California St.

Mel Raption Honda, Sacramento.

Royal Motor Sales, 280 South Van Ness Ave.

San Francisco Auto Center, 2300 16th St.

San Francisco Honda, 10 South Van Ness.

All Paul Snider dealerships, Sacramento.

Stevens Creek Acura, San Jose.

Swift Auto World, Sacramento.

Others

Armstrong Painting & Waterproofing of San Francisco and its entities, including **Armstrong Kitchens**, **Armstrong Construction**, **Armstrong Painting**, and **Armstrong Roofing**.

Bank of America: all branches and services.

Circuit City stores at 4080 Stevens Creek Blvd., San Jose; 1825 Hillsdale Ave., San Jose, and 1250 Grant Rd. Mountain View.

Costco Wholesale Warehouse grocery outlets at 1600 Coleman Ave., Santa Clara, and 1900 South 10th St. San Jose.

Dick's Rancho, Rancho Cordova.

Grand Auto stores and service centers along with **PACCAR, Inc.**, the parent company, throughout Northern California.

Hertzka and Knowles, San Francisco, architects.

K-Mart, statewide.

Keystone Company restaurant supply, San Jose.

Montgomery Ward in Redding.

Mervyn's in Ventura.

Norbert Cronin & Co., insurance agents, San Francisco.

Non-union Iceberg Lettuce.

Raley's Food Market, Oakhurst, Madera County.

Sacramento-area concrete: **Dixon Ready Mix**, Dixon; **Livingston's Concrete**, 5416 Roseville Rd., North Highlands; **Trinco Ready Mix**, 2700 Athens Ave., Lincoln.

Sacramento-area glass: **Arrow Glass**, Country Club Glass, Del Paso Glass, Fine Glass, **Golden West Glass**, all locations; **Kinzel's Glass**, Carmichael; **Sam's Auto Glass**, River City Glass, Victor Glass.

Sacramento-area signs: **Ellis Signage-Graphics**, Fleming Silk Screen, House of Signs, and **River City Signs**, all in Sacramento; **Young Electric Sign Co.**, West Sacramento.

Sam's Club warehouse outlet stores along with all **Wal-Mart** stores.

Sears Roebuck, all California outlets.

Shoreline South Convalescent Hospital, Alameda.

Somers Building Maintenance, Sacramento.

State Farm Mutual Auto Insurance Co., statewide.

SuperCuts: all SuperCuts salons in California.

Thomas Swan Sign Co., 1117 Howard St., San Francisco.

Vencor/Hillhaven: all convalescent hospitals in California.

Wal-Mart: all stores in California, along with all **Sam's Club** warehouse outlets owned by the same corporations.

Whole Food Market, 200 Telegraph Ave., Berkeley.

Youthful Tooth Dental Care, 8105 Edgewater Dr., Suite 204, Oakland.

**Honor
Labor's
Boycotts**