



UTILITY REPORTER

OFFICIAL VOICE OF IBEW LOCAL UNION 1245 AFL-CIO

Local 1245 members at PG&E approve new contract by 70%

With an eye on stability, members employed at PG&E recently ratified a new four-year contract by a wide margin, with more than 70 percent of those voting, voting in favor of the offer.

"I'm happy that our members were in support of this new contract, and proud that our Negotiating Committee achieved an offer that had no takeaways—certainly a tough job to tackle in these rough economic times," Business Manager Jack McNally said following announcement of the approval of the agreement.

With nearly 7000 members voting, a total of 5332 voted to approve the contract which calls for a 5.5 percent wage increase effective January 1, 1984, along with other improvements including a 5.7 percent increase in the Pension Bands, annual improvement in Medical Supplemental Benefits from \$10.50 to \$21.00, plus an increase in Group Life Insurance from \$4000 to \$8000 for retirees.

Also approved were wage increases for 1985, 1986 and 1987 of 3 percent for each year, plus one-cent

per hour for each .3 points rise in the July to July Consumer Price Index, and continued full health care benefit coverage.

There were 1591 votes against accepting the offer, a vote which was less than 30 percent of the total vote. Only 32 ballots were decertified during the count.

Balloting by mail was conducted during a three week period with an

October 26 deadline for all ballots to be received.

On that day the IBEW Local 1245 Ballot Committee, headed up by Election Judge Chuck Larson, met at Local Union Headquarters to validate and count the votes, and prepare an official report of the results for the membership.

Pictured here are the members of the Ballot Committee.



Election Judge Chuck Larson, R, and Sandra Rankin.



Rebecca Rosecrans.



Christine Lay.



Frank Kenney.



Ron Blakemore.



Assistant Business Manager Orv Owen, President Howard Stiefer, Tim Healy, and John Delsman.



Harvey Iness.



Sterling Coldren.



Leo Jameson.



Leroy Adams.

Key Labor issues featured in new TV series starting in January '84

"America Works," labor's weekly public affairs series, returns to commercial television in January, 1984, with programs on four critical issues: health, hunger, energy, and education.

Most stations will begin the winter run of "America Works" on the weekend of January 7.

Each "America Works" program produced by the AFL-CIO Labor Institute of Public Affairs, features a documentary about a labor activist working on one of America's most critical problems, and is followed by a debate and a videographic "information segment."

For the January run, "America Works" will focus on Massachusetts nurse Cheryl Deignan, member of the Service Employees, who is challenging health insurance rates and demanding changes from hospitals and other health providers.

Another episode features Robert Goss, President of Denver-based Oil, Chemical, and Atomic Workers, and Steve Berringer, AFL-CIO Field Representative, who are leading a grassroots effort to get Congress to roll back natural gas prices.

In Los Angeles, "America Works" covers Steelworker George Cole,

who has organized a food distribution effort that serves over 35,000 individuals each month. Cole and other unionists are trying to establish a farmers' market to provide cheaper food for his community, where unemployment is over 20%. An episode on education will focus on efforts by teachers and parents to finance better schools, to raise educational standards, and improve teacher salaries.

Veteran journalist and Emmy Award winner Marie Torre returns as host of "America Works" and completes each program with a debate that brings top-level analysis to the national and historical scope of the issues.

"America Works" features real people, struggling to solve the issues that directly affect them:

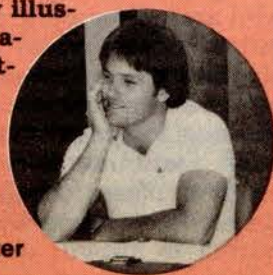
- The skyrocketing cost of health care threatens to price the current coverage out of the reach of many workers;
- In our country, the largest food producer in the world, we find more and more people without enough food to eat;
- Escalating costs for fuel have forced many consumers, especially the elderly on fixed incomes,

to choose between heating their homes and buying necessities; Schedules for airing in the western states include: Los Angeles, Channel KHJ, beginning 7:30 A.M., Saturday, 1-7-84; Sacramento, Channel KRBK, beginning 9 A.M., Sunday, 1-8-84; San Francisco, Channel KTSF, beginning 4 P.M., Saturday, 1-7-84; Portland, KECH, beginning 10 A.M., Sunday, 1-8-84; Bellingham, Washington, KVOS, beginning 3 P.M., Sunday, 1-8-84, and in Spokane, possible listings are pending.

Holiday artist

Talented artist, member Mike Carter, a Service Technician with Group W Cable, in the spirit of holiday giving, has beautifully illustrated a seasonal greeting for all our members on pages 6,7.

Mike Carter



Sonic group accepts new 3-year offer

Local 1245 members employed by Sonic Cable TV have voted by a 2 to 1 margin to accept Company's offer of October 5, 1983 to amend the agreement and settle this year's negotiations.

The new three-year agreement provides wage increases ranging from 5 to 7 percent effective September 1, 1983; 5 percent on September 1, 1984; and 5 percent effective on September 1, 1985. If the cost of living exceeds 6 percent in the years 1984 and 1985, Company agrees to reopen wage negotiations with the Union. The new agreement also provides for improvements in contract sections covering vacations, holidays, sick leave, overtime, meals, personal business, inclement weather and safety.

Local 1245's negotiating committee consisting of Dale Rogers, Erik Johnson, Scott Lawson and Business Representative Dave Reese are to be congratulated on a job well done.



BARGAINING REPORT

BY ORV OWEN, ASSISTANT BUSINESS MANAGER

Utility Reporter

NOVEMBER/DECEMBER 1983

VOLUME XXXI NUMBER 11

CIRCULATION: 24,000

(415) 933-6060

Business Manager
& Executive Editor

JACK McNALLY

Managing Editor

CAROL BEDSOLE

President

Howard Stiefer

Executive Board

Nannette Dominguez

Barbara Symons

Michael J. Davis

Cindy Vallejo

Kathy F. Tindall

Lyman Morrison

Published monthly at 3063
Citrus Circle, Walnut Creek,
California 94598. Official
publication of Local Union 1245,
International Brotherhood of
Electrical Workers, AFL-CIO,
P.O. Box 4790, Walnut Creek,
CA 94596.

Second Class postage paid at
Walnut Creek and at additional
mailing offices. USPS No.
654640, ISSN No. 0190-4965.

POSTMASTER: Please send
Form 3579, Change of Address,
and all correspondence to
Utility Reporter, P.O. Box 4790,
Walnut Creek, CA 94596.



WAPA

GAU

Credits:

Contributing writers: Staff Attorney Ann
Miley; Assistant Business Manager Orv
Owen; Industrial Hygienist Juliann
Sum; Mike Carter, Illustrator.

State TV Cable

Local 1245's Negotiating Committee consisting of Pamela Hendrix, Michael Considine, David McGuire and Business Representative Scott Thomas are currently in bargaining with State TV for amendments and improvements on the current Agreements. Wages and reduced costs on medical coverage are priority issues in this year's negotiations.

Wells Rural Electric Company

On November 4, 1983 Local 1245's Negotiating Committee consisting of Roy McWilliams, Bruce Widner and Business Representative Lee Thomas commenced collective bargaining with the Company at their Wells, Nevada headquarters. At the initial meeting the parties exchanged proposals. Company proposals contained "take-aways" and a new wage formula. The committees are currently reviewing the position of each party and developing their counter proposals to be presented and discussed at their next bargaining session on November 18, 1983.

Pacific Tree Expert

Local 1245's Negotiating Com-

mittee, consisting of Doug Bonham, Mike Higgins, Business Representative Mickey Harrington and Assistant Business Manager Orv Owen met with Company's committee on November 3, 1983 to discuss the allocation of the wage and benefit formula of the current agreement that will be effective on January 1, 1984 for all Pacific Tree members.

The parties are currently considering two alternatives of across-the-board general wage increase or a reduced general wage increase and the establishment of a "severance plan" for each individual employee.

Davey Tree Surgery

Local 1245's Negotiating Committee is currently in the process of being appointed for meetings with the Company on the wage and benefit formula allocations to be effective on January 1, 1984 based on the provisions of the current agreement.

CP National — Lassen District

November 15, 1983, negotiating committees representing the Company and Union met to commence collective bargaining on a new

agreement as a result of the cancellation by both parties of the existing agreement.

As a result of the above there will be additional bargaining pressures on both committees to reach a settlement by December 31, 1983.

Local 1245's Negotiating Committee members are Joann Villalobos, Kevin Scott Merrill, Kelley Holmes and Business Representative Scott Thomas.

CP National — South Tahoe

On October 17, 1983 Local 1245 was certified by the National Labor Relations Board to represent the gas operating, maintenance and construction employees at the South Lake Tahoe — CP National facility.

On November 14, 1983 Company and Union negotiating committees had their initial collective bargaining meeting. The parties exchanged proposals on the establishment of a total labor agreement.

The next meeting between the parties will be in early December.

Local 1245's Negotiating Committee consists of Robert C. Hansen, Robert J. Robinette and Business Representative John Stralla.

Mt. Wheeler ratification

Local 1245 members employed by Mt. Wheeler Power in Ely, Nevada have ratified the bargaining table settlement reached by Company and Union negotiating committees. Highlights of the three-year settlement include the following:

Wage Increases: Effective August 1, 1983, all wage rates, except for the classifications of Working Line Foreman and Area Lineman, shall be increased by fifty cents (\$.50) per hour. The classifications of Working Line Foreman and Area Lineman shall be increased by 60 cents per hour on the same dates.

Effective February 1, 1984, all wage rates shall be increased by seven (7) cents per hour.

Not more than 60 days prior to August 1, 1984, the contract shall be reopened for discussion of Article 8 only, to consider a wage adjustment to be effective August 1, 1984.

Not more than 60 days prior to August 1, 1985, the contract shall be reopened for discussion of Article 8 only, to consider a wage adjustment to be effective August 1, 1985.

Expenses: Regular employees who are on temporary assignment outside the system service area shall be allowed personal expenses for the actual cost of meals, tips and personal lodging for the duration of such assignment, provided they lodge at places designated by the Employer. The employee will be required to submit appropriate re-

ceipts for reimbursement of meal and lodging expenses.

Serving on Local 1245's Negotiating Committee were veteran negotiators Jan Reger and Robert Swetch, assisted by Senior Assistant Business Manager Darrel Mitchell.

CP National - Elko Telephone contract ok'd

On September 30, Local 1245 members employed by CP National — Elko Telephone, by a vote of 45 to 4 accepted the results reached at the bargaining table between Company and Union negotiating committees. Highlights of the new two-year agreement include a 4 percent general wage increase retroactive to August 1, 1983; 2 percent wage increase effective February 1, 1984; wage reopener for a wage increase that will be effective on August 1, 1984. The new settlement also provides improvements in layoff procedure, severance pay, operators' scheduling, Working Foreman differentials, job descriptions and bereavement leave.

Local 1245's Negotiating Committee included Dora Carone, Sondra Reynolds, Charles Stout, Patrick Wastun and Senior Assistant Business Manager Darrel Mitchell.

Group W Cable approves new 3-year contract

Local 1245 members employed by Group W Cable at Ukiah, Willits, Ft. Bragg, Santa Maria, Santa Cruz, Lompoc, Reno and Tahoe systems, by a secret ballot vote conducted at special ratification meetings, have voted by a 100 to 26 margin to accept the bargaining table settlement reached between Company and Union negotiating committees.

The new three-year agreement provides wage increases ranging from 10.7 percent to 15 percent in 1983, 6 percent in 1984 and 6 percent in 1985. The new settlement also provides improvements in the grievance procedure, shift premiums, meals, overtime, bereavement leave, sick leave and a new salary continuance plan.

Local 1245's negotiating committee consisting of Donna Whetstone, Robert Reid, Robert DeVito, Mike Howarth, Carey Clark, Mike Carter, Mark Fakhouri, Dean Gates and Debra Armstrong, were able to meet a majority of the goals sought in this year's negotiations.

Business Representative Larry Pierce and Assistant Business Manager Orv Owen assisted Union's committee in these negotiations.

The new agreements are currently being processed for printing for distribution to the membership.

APPOINTMENTS

PACIFIC GAS AND ELECTRIC COMPANY

San Jose Division Joint Grievance Committee
Cy Burr

General Construction Joint Grievance Committee
Barry Humphrey
Randy Abbott (Alternate)

North Bay Division Joint Grievance Committee
Paul Frasher
Larry Wood

GC Station Mechanic Training Committee
Barry Humphrey

Geysers Transportation Committee
Jerold Best

Pipe Line Operations Operators Committee
Robert H. Engstrom
Vern Cooke

C.P. NATIONAL CORPORATION

CP National — Lassen Division Negotiating Committee
Joann I. Villalobos
Kevin Scott Merrill
Kent Kelly Holmes

CP National — South Tahoe Negotiating Committee
Robert C. Hansen
Robert J. Robinette

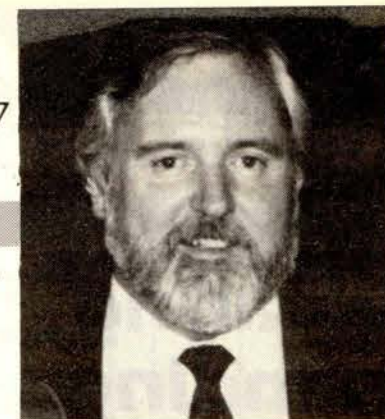
WELLS RURAL ELECTRIC COMPANY

Wells REC Negotiating Committee
Roy F. McWilliams
Bruce W. Widmer

GROUP W CABLE

Negotiating Committee
Debra Armstrong

POINT OF VIEW



IBEW 1245 Business Manager

Holiday spirit, good will needed the year around in a very troubled world

The outgoing year, 1983, has been a busy one for Local 1245 and an unsettled year for the people of the world. Fear and tension grip the world, with war and aggression in the Middle East and Central America. Peace on Earth — Good Will Toward Men seems to be more of a question than a greeting.

Here at home we still have high unemployment and a continuing recession. It has been a tough year for some unions, with loss of membership and their being forced to give back some hard-won wages and conditions. The economy has some serious and complex problems. However, some say the recession has bottomed out and that we are on the road to recovery.

We in Local 1245 have now almost completed bargaining on most of our properties. It was a heavy year for bargaining and we were able to maintain all of our agreements without any give-backs.

1984 will be an active and exciting year. We have a number of issues that still have to be resolved with PG&E. 1984 will be an election year. This will be a time when everyone will have the opportunity to voice their opinion. The office of President, and Congressional and State legislative positions will be on the ballot. It will be very important to consider the state of foreign affairs and of the economy when you exercise your right to vote.

It is the holiday season. It is a time for reflection and a time to promote the spirit of good will and brotherhood. If all of us at home and abroad could maintain the spirit of good will through the whole year, we might find solutions to the problems.

As this year closes, I wish to thank all of you for your support and confidence this past year. I wish all of you a happy holiday season and good will during the coming year.

In Unity —

Jack McKinney

Senator Jackson remembered

American workers lost a faithful ally in Congress with the death of Henry M. Jackson, the Democratic senior senator from Washington state.

"All of American labor mourns the death of Scoop Jackson," AFL-CIO President Lane Kirkland said in a message. "During his 42 years in the Congress labor had no stauncher friend."

Jackson, who compiled a 94-percent "right" voting record on vital labor issues over four decades in the House and Senate, died in early September in Everett, Washington, after suffering a massive heart failure. He was 71.

Jackson was singled out for sharing the labor movement's commitment "to social and economic justice and to a strong national defense adequate to protect those values

against totalitarians of the left or the right.

"American workers have lost a cherished friend, and the nation lost a statesman of courage," Kirkland said.

Jackson was elected to the 77th Congress in 1940 when he was 28, serving as one of the youngest members in the House. He was re-elected five times before running for the Senate in 1952. He unseated the Republican incumbent with a plurality of more than 135,000 votes even as Dwight D. Eisenhower, the Republican presidential candidate, carried the state by 100,000 votes.

In addition to his enthusiastic support of labor and defense issues, Jackson played a major role in the enactment of civil rights, international human rights and environmental measures.

**Next Advisory Council Meeting
Saturday Feb. 4 — Sunday Feb. 5
At The Sheraton Inn, Concord**

Hearing pending on asbestos citations

IBEW Local 1245 has filed a request for third party status in PG&E's appeal for citations for alleged asbestos violations issued to the Company on August 18, 1983.

The one general and three serious citations charge the Company with the following OSHA violations:

(1) Failure to obtain air or bulk material samples for asbestos and failure to notify Cal/OSHA that asbestos work was being done;

(2) Failure to wet the asbestos before handling (a requirement to minimize dust);

(3) Failure to provide employees with personal protective clothing; and

(4) Failure to provide employees with adequate asbestos training.

The Union files for third party status when either a serious health and safety issue is at stake and/or a member may be faced with discipline as a result of an OSHA citation. In this case, the seriousness of possible carcinogen exposure alone provides adequate basis for Union intervention.

Within a week or two Cal/OSHA will confirm the Union's request to be granted third party status. Such a request, if timely, is always granted, as Cal/OSHA has a legal responsibility to the representatives of the workers in addition to the employer and the State.

If the Union receives third party status, Local 1245 will then appear at the appeal hearing represented by Staff Attorney Ann Miley. At that time Miley will present evidence, and cross-examine witnesses to represent the Union's interest in this serious matter of improper asbestos procedures.

An administrative law judge who specializes in Cal/OSHA administrative law will preside at the hearing. After all evidence is presented, the judge will render a decision to either uphold or overrule the citations and to either sustain or reduce the current total fine of \$3,000. The judge's decision will be final unless any of the parties file a petition for reconsideration. If such a petition is filed and is granted, the judge's decision will be reviewed by a three-judge appeals board, whose decision can only be reviewed by a court.

Assistance of Union members is of course vital to the Union staff in preparing for this and all other Cal/OSHA hearings. Cal/OSHA attorneys consistently remark on the knowledgeable and cooperative support which has been provided by IBEW Local 1245 members.

Hazardous substance information must be provided to all members

Access to health and safety information regarding hazardous substances you work with is a legal right for all Local 1245 members. Your employer has a 15-day deadline to provide access to all available information upon your request. Access to medical records does, however, require signed releases.

Employees covered under California standards and regulations have an additional right to special training on manufacturers' Material Safety Data Sheets (MSDS). Your employer must provide written information or training programs as called for in Section 5194 of the State of California's General Indus-

try Safety Orders which specifies:

(1) Employers shall furnish employees with an explanation of what a MSDS is either in written form or through training programs.

(2) Employers shall furnish employees who may be exposed to a hazardous substance with information on the contents of the MSDS for that hazardous substance, or equivalent information, either in written form or through training programs.

Training must include information on the health hazards, handling precautions, necessary personal protective equipment, and emergency procedures.

The training program was required to take effect in the spring of 1983. **Please let us know if you need further information or if you have not received your initial training to date.**

Don't Patronize Nissan/Datsun, Operating in the U.S. believes in a "union-free" environment, so why should a union member buy a Nissan or Datsun car or truck?"

IBEW Local 1245 active around the state

1. Environmental Cabs

At a public hearing in October, we supported the proposed Cal/OSHA regulations on environmental cabs for earth moving equipment. Although optional, the regulations are a positive first step in controlling dust and noise exposures.

2. Advisory Committees appointed by Cal/OSHA

We have notified Cal/OSHA officials that we are monitoring their establishment of Advisory Committees. We are concerned with their past practice of citing the greater availability of management representatives on these committees as a means of defeating labor proposals.

3. Legislative Oversight Hearings

Hearings regarding Cal/OSHA programs were scheduled for December 6, 1983 in San Francisco, and December 8, 1983 in Los Angeles. Local 1245 was set to testify.

4. Governor's Regulatory Review Program

We are continuing to comment and testify on specific Cal/OSHA proposals to cut back on standards and regulations, in addition to expressing continued overall disagreement with Deukmejian's Regulatory Review Program.

5. Cancer Policy — State of California Health Department

Local 1245 presented testimony at a public workshop on September 22, 1983 in Berkeley. We have coordinated written testimony by 40 labor organizations in conjunction with BACOSH, the Bay Area Committee on Occupational Safety and Health.

6. "Toxics Management in California", public hearing held in November by the Governor's Hazardous Substances Task Force

We are keeping track of developments in this area.

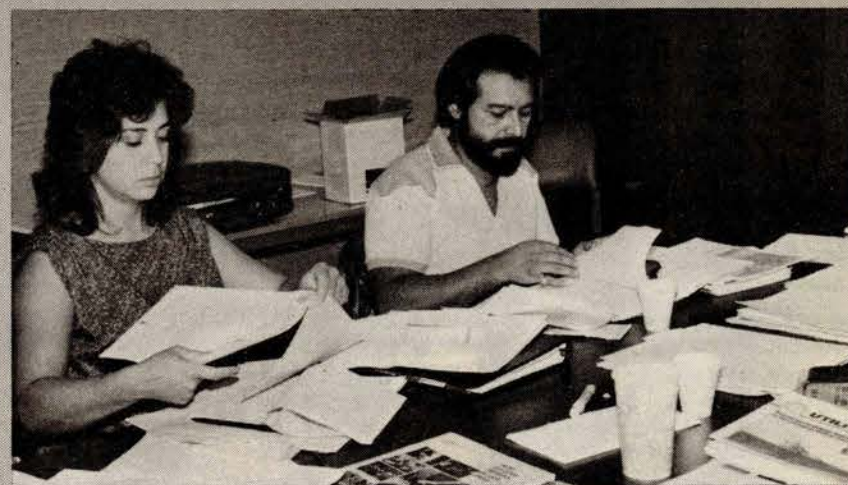
7. Hazardous Substances List review by the State of California Department of Industrial Relations

Testimony presented at the public hearing in December in San Francisco.

8. Identification of Hazardous Wastes by the State of California Department of Health Services

We are monitoring proposals to be discussed at a public hearing scheduled for December 12, 1983 in Sacramento.

Health and Safety



Reviewing material are, L-R, Olga Estrella, and John Callejas.



Don McKinley is preparing for a Joint Local 1245 — PG&E Health and Safety Committee Meeting.

American Labor publicizes new corporate 'Dishonor Roll'

The AFL-CIO is getting angry. At a news conference the federation's Industrial Union Department is to begin a major propaganda offensive by making public a new "dishonor roll" of American corporations that, labor leaders charge, have "demonstrated a clear corporate determination to break the unions which represent their workers."

The concerns that will be singled out for this distinction are Litton In-

dustries, Proctor & Gamble's Soap Division, Faberge, Capital Cities Communications and the Indiana Desk Company.

The labor federation is attempting to isolate these corporations, which it calls labor law violators, from what it regards as more responsible ones by notifying groups such as the National Association of Manufacturers and the United States Chamber of Commerce of the "dishonor roll" de-

signations. In political terms, the notice attempts to force the business groups into a choice between condemning some of their own members or becoming eligible for the list themselves.

Meanwhile, members are urged to boycott consumer items produced by these manufacturers, such as Zest, Camay, Brut, Ceramic Nail Glaze and Macho.



'Cellon' pole study continues; respirator provisions in San Joaquin

1. Since SMUD this summer made a public commitment to dispose of pentachlorophenol-treated utility poles in hazardous waste dump sites, we have inquired of PG&E what their intentions are. Pentachlorophenol is a toxic chemical used as a pesticide preservative for poles treated by the "cellon" process, a type of pressure treatment. At Joint Health and Safety Committee meetings on October 5 and November 16, 1983, PG&E indicated that they were studying the problem and will keep us informed.

In the meantime, the AFL-CIO and the Natural Resources Defense Council, a leading environmental group, are jointly filing a law suit against EPA for collaborating improperly with industry over the reg-

ulation of pentachlorophenol and other wood preservatives.

2. Wood boxes for 50 kva underground transformers in Clovis have been linked with heavy irritation due to vapors, according to Gas and Electric Transmission and Distribution Department employees in PG&E's San Joaquin Division. These boxes carry the label "cellon or PG&E — approved equipment." Upon Union's request, PG&E has agreed to provide appropriate respirators for "organic vapors" and protective clothing during the period in which air monitoring is being conducted. Please let us know if you are having problems with obtaining protection from the irritation effects associated with these boxes.

Avonseal: caution indicated

Local 1245 members employed in the Gas Transmission and Distribution Department in PG&E's Sacramento Division recently alerted us to a primer which contains potentially hazardous chemicals. The product is called "Avonseal Two Primer 173".

Upon our request, PG&E has agreed to conduct industrial hygiene monitoring next summer. In the meantime, they indicated

that employees will be supplied gloves and goggles to be used with this primer, and that appropriate respiratory protection, to protect against overexposure to "organic vapors" will be provided upon request.

Please let your Shop Steward or Business Representative know if you have any questions or problems regarding Avonseal Two Primer 173.

Irritations reported with liquid soap use

With the use of a new leak detection compound called "PLEX 60LS", Gas Servicemen have reported the recurrence of eye and respiratory irritation when this product is used as a spray. Similar problems had occurred earlier this year with "3D Leak Detection Compound." The new problems have been reported in PG&E's San Francisco and San Jose Divisions.

Upon our inquiry, PG&E has indicated that the 3D supplier had substituted other than specified ingredients in their product. PG&E

has recently contracted with another supplier for PLEX 60LS and, as of press time, was conducting laboratory analysis after hearing from us of the new irritation problems.

During the interim period, PG&E indicated that "gas service employees are being supplied with fresh quantities of PLEX 60LS in those areas where employee complaints have been received."

Please let us know if you are experiencing continued problems with PLEX 60LS.

Back injury study begins in Payment Processing unit

On October 28 and November 8, 1983, the Local Union's Payment Processing Center Committee successfully negotiated for PG&E to contract the services of Dr. David Thompson, Industrial Engineer at Stanford University. Dr. Thompson proposes to conduct a series of studies which will lead to recommendations in health and safety addressing the back injury problems, as well as production standards.

In the meantime, a number of Workers' Compensation cases and third party law suits against the manufacturers of the processing machine are being filed by some of the affected employees. We are in communication with the involved lawyers and physicians.

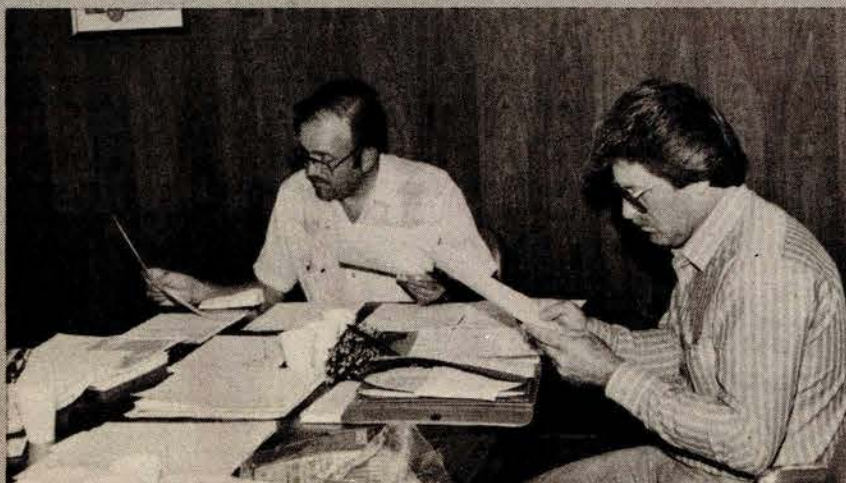
The Payment Processing Center Committee, headed by Assistant

Business Manager Ron Fitzsimmons, includes Shop Steward Don Watts, member Gloria Burrell, Business Representative Dorothy Fortier, and Industrial Hygienist Juliann Sum.

Committee at work



Joe Aquilio studies information prior to meeting.



Committee members, L-R, Bob Daniels, and Gino Aramini outline issues for meeting.

IBEW Local 1245 Legal Plan

To use the plan call:

In California: 800-652-1569

In Nevada: 702-358-1086

PG&E, SAN JOAQUIN — MERCED IRRIGATION DISTRICT — ORANGE COVE — LINDMORE IRRIGATION DISTRICT — PG&E, COAST VALLEYS — TELEPROMPTER OF LOMPOC — TELEPROMPTER OF SANTA MARIA — MONTEREY PENINSULA TV CABLE — SONIC TV CABLE — CP NATIONAL-NEEDLES — CITY OF SANTA CLARA — PG&E, SAN JOSE — TELEPROMPTER OF SANTA CRUZ — STAN PAC GAS LINE — PG&E, MATERIALS DISTRIBUTION — AC TRANSIT — PG&E, EAST BAY — X-RAY ENGINEERING — CONCORD TV CABLE — PG&E, SAN FRANCISCO — PG&E, GENERAL OFFICE — WESTERN TV CABLE — PG&E, STOCKTON — MODESTO IRRIGATION DISTRICT — TRI-DAM PROJECT — CITY OF ALAMEDA — CITY OF BERKELEY — CITY OF LODI — CITY OF OAKLAND — SACRAMENTO RTD — PACIFIC GAS TRANSMISSION — PG&E, HUMBOLDT — PG&E, SHASTA — CITY OF REDDING — CP NATIONAL-LASSEN — TELEPROMPTER OF SO. LAKE TAHOE — SHASTA DAM AREA P.U.D. — CP NATIONAL-ELKO TELEPHONE — SIERRA PACIFIC POWER — CP NATIONAL-ELKO POWER — TRUCKEE-DONNER PUD — TELEPROMPTER OF RENO — MT. WHEELER POWER — WELLS REC — LYNCH COMMUNICATION — PG&E, DE SABLA — PARADISE IRRIGATION DISTRICT — GLENN-COLUSA IRRIGATION DISTRICT





IBEW LOCAL 1245

— STA

—

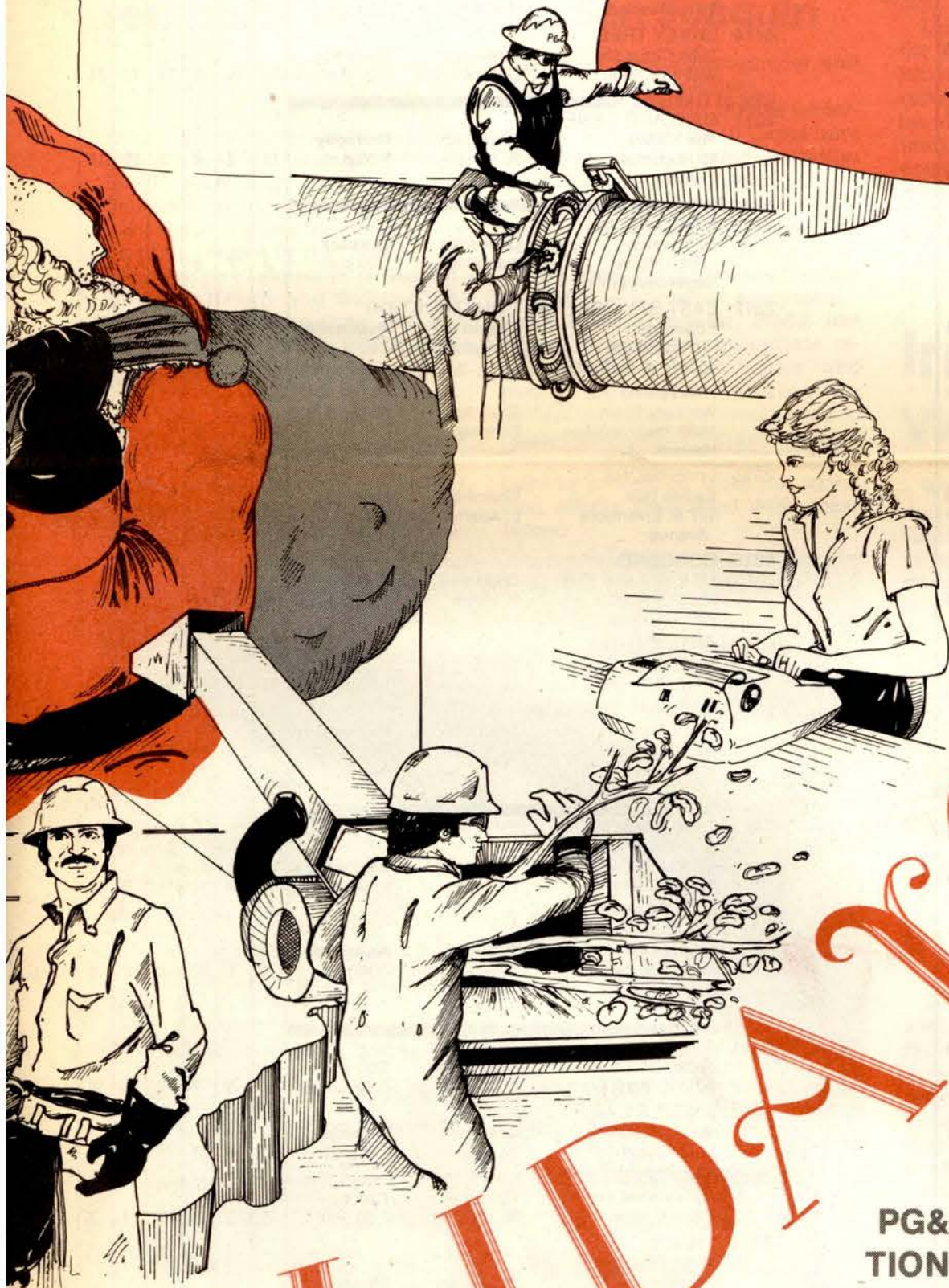


C —
RADISE
DISTRICT

T
PG&E, S
TION DIS
MORE IRRIG
VALLEYS — TELE
PROMPTER OF SAN
SULA TV CABLE — SC
NEEDLES — CITY OF SAN

MIKE CARTER '83

EW LOCAL
1245



HOLIDAYS

— STATE CABLE TV — CITY OF CHICO
— PG&E, DRUM — PLUMAS SIERRA
REC — NEVADA IRRIGATION
DISTRICT — CITY OF ROSE-
VILLE — PG&E, COLGATE —
OROVILLE-WYANDOTTE
IRRIGATION DISTRICT —
RICHVALE IRRIGATION
DISTRICT — THERMA-
LITO IRRIGATION DIS-
TRICT — YUBA COUNTY
WATER AGENCY —
PG&E, NORTH BAY —
CITY OF HEALDSBURG
— TELEPROMPTER
OF UKIAH, WILLITS
— TELEPROMPTER
OF FORT BRAGG —
GROUP W CABLE —
PG&E, SACRAMENTO
— SMUD — U.S.B.R.
— WESTERN AREA
POWER ADMINISTRA-
TION — TRACY DE-
FENSE DEPOT — CITI-
ZENS UTILITIES — PG&E,
GENERAL CONSTRU-
TION — DAVEY TREE-SAN
JOSE, EAST BAY, SAN
JOAQUIN, STOCKTON —
PACIFIC TREE-COLGATE,
DE SABLE, SACRAMENTO,
SHASTA — OUTSIDE CONSTRU-
TION — TELEPHONE CONSTRU-
TION — PIPELINE OPERATIONS —
PG&E, SAN JOAQUIN — MERCED IRRIGA-
TION DISTRICT — ORANGE COVE — LIND-
MORE IRRIGATION DISTRICT — PG&E, COAST
VALLEYS — TELEPROMPTER OF LOMPOC — TELE-
PROMPTER OF SANTA MARIA — MONTEREY PENIN-
SULA TV CABLE — SONIC TV CABLE — CP NATIONAL-
NEEDLES — CITY OF SANTA CLARA — PG&E, SAN JOSE —

IBEW LOCAL 1245 UNIT MEETINGS

January to
June 1984

				Jan	Feb	Mar	Apr	May	Jun
San Joaquin									
1111	FRESNO Cedar Lane Bowl Cedar & Shields	Chairman: S. Perales	Tuesday 5:30 p.m.	3	7	6	3	1	5
1112	BAKERSFIELD Central Labor Council 200 W. Jeffrey	Chairman: Ed Mallory	Thursday 7:30 p.m.	12	9	8	12	10	14
1113	MADERA DiCicco's 516 So. I St.	Chairman: R. Moon	Thursday 7:30 p.m.	5	9	8	5	3	7
1117	WASCO Veteran's Cafe Poso & 4th St.	Chairman: T. Caterlin	Monday 5:00 p.m.	9	13	12	9	14	11
1118	CRANE VALLEY Sierra Sky Ranch Highway 41 Oakhurst, CA 93644	Chairman: R. Newton	Wednesday 7:30 p.m.	4	8	7	4	2	6
1119	BALCH Rec. Hall	Chairman: T. Moore	Tuesday 5:30 p.m.	10	14	13	10	8	12
1120	SELMA El Conquistador Restaurant	Chairman: Tom Thomas	Thursday 5:00 p.m.	12	9	8	12	10	14
1121	COALINGA Power Club Jayne & Merced	Chairman: S. Gillespie	Tuesday 7:30 p.m.	9	7	13	10	15	12
1122	MERCED IRRIGATION DISTRICT Pine Cone Coffee Shop 2000 E. Childs	Chairman: M. Higgins	Thursday 7:30 p.m.	12	9	8	12	10	14
1123	MERCED Teamsters Hall 740 West 19th St.	Chairman: D. Mayo	Thursday 7:30 p.m.	12	16	15	12	10	14
1124	LOS BANOS Wool Growers 609 H St.	Chairman: Tom Hunt	Wednesday * 5:00 p.m.	11	15	14	11	16	14
* Time change.									
Coast Valleys									
1211	SALINAS American Legion Hall 14 W. Laurel Dr.	Chairman: J. Delsman	Tuesday * 5:00 p.m.	3	7	6	3	8	5
* Time change.									
1212	MONTEREY Two Guys From Italy 2030 Fremont St.	Chairman: G. Carlsen	Wednesday * 5:00 p.m.	18	22	21	18	23	20
1214	MOSS LANDING Odd Fellow Hall 17-A East Beach Watsonville	Chairman: K. Markoe	Thursday 5:00 p.m.	5	9	8	5	10	* 7
1215	SAN LUIS OBISPO Motel Inn 2223 Monterey St.	Chairman: G. Outlaw	Wednesday 7:00 p.m.	11	15	14	11	16	13
1216	SANTA MARIA Vanderberg Inn 1316 So. Broadway	Chairman: D. Woods	Thursday 8:00 p.m.	12	16	15	12	17	14
1217	PASO ROBLES Paso Robles Inn 11 & Spring St.	Chairman: J. Taylor	Tuesday 7:00 p.m.	10	14	13	10	15	12
1218	MONTEREY PENINSULA TV Two Guys From Italy 2030 Fremont St.	Chairman: P. Gaudoin	Tuesday * 7:00 p.m.	17	21	20	17	22	19
1219	HOLLISTER Paine's Restaurant 421 East	Chairman: J. Johnson	Wednesday 5:00 p.m.	4	8	7	4	9	6
1220	DIABLO CANYON San Luis Bay Inn Avila Beach	Chairman: W. Oakley	Monday 5:00 p.m.	9	13	12	9	14	11
* Time change.									
Pipe Line									
1311	BARSTOW V.F.W. Club Rm. 25214 W. Main St.	Chairman: V. Cooke	Wednesday 5:00 p.m.	4	1	7	4	2	6
1312	NEEDLES Eagles Club Front St.	Chairman: C. Rowen	Thursday 5:00 p.m.	5	2	1	5	3	7
Santa Clara									
1411	CITY OF SANTA CLARA Fiorillo's Pizza 2230 El Camino	Chairman: R. Blankenship	Thursday 5:30 p.m.	12	9	8	12	10	14
San Jose									
1501	SAN JOSE, CLERICAL Clover Hall 99 N. Bascom	Chairman: B. Brill	Tuesday 6:30 p.m.	10	14	13	10	8	12
				Jan	Feb	Mar	Apr	May	Jun

				Jan	Feb	Mar	Apr	May	Jun
1511	SAN JOSE, PHYSICAL Clover Hall 99 N. Bascom	Chairman: R. Fitzpatrick	Tuesday 8:00 p.m.	3	7	6	3	1	5
1512	BELMONT Windy City Pizza 1030 El Camino	Chairman: T. Hughes	Wednesday 5:15 p.m.	11	8	14	11	9	13
1513	SANTA CRUZ The Pizza Co. 1501 41st Ave. Capitola	Chairman: D. Turner	Wednesday 8:00 p.m.	4	1	7	4	2	6
1515	GILROY Watsonville Fed. Savings 801 I St.	Chairman: D. Mayberry	Tuesday 7:00 p.m.	17	21	20	17	15	19
4411	DAVEY TREE-LAS VEGAS Shakey's Pizza 4245 E. Boulder Hwy.	Chairman: R. Freeman	Thursday 7:00 p.m.	5	2	1	5	3	7
4412	DAVEY TREE-SAN JOSE Clover Hall 99 N. Bascom	Chairman: D. Firth	Tuesday 7:00 p.m.						
4414	DAVEY TREE 3063 Citrus Cir. Walnut Creek	Chairman: G. McKinnon	Thursday 5:00 p.m.	19	16	15	19	17	21
City of Oakland									
2211	OAKLAND GENERAL The Flanker 45 Hegenberger Loop	Chairman: R. Murphy	Thursday 5:00 p.m.	12	9	8	12	10	14
East Bay									
2311	OAKLAND Edgewater- Hyatt House Hegenberger Rd.	Chairman: J. Graham	Tuesday 7:00 p.m.	3	7	6	3	1	5
2312	EAST BAY GENERAL CONSTRUCTION Edgewater- Hyatt House 455 Hegenberger Rd.	Chairman: A. Washington	Wednesday 6:00 p.m.	4	1	7	4	2	6
2314	HAYWARD Whiskey Town 5660 Thornton Ave. Newark	Chairman: T. Healy	Wednesday 6:00 p.m.	11	8	14	11	9	13
2315	LIVERMORE Eagles Hall 527 N. Livermore Avenue	Chairman: L. Adams	Thursday 7:00 p.m.	5	2	1	5	3	7
2316	CONCORD I.B.E.W. Local 1245 3063 Citrus Cir. Walnut Creek	Chairman: D. Hoyer	Thursday 7:30 p.m.	12	9	8	12	10	14
2317	ANTIOCH Moose Lodge 4th & H Street	Chairman: M. Hessler	Tuesday 7:00 p.m.	10	14	13	10	8	12
2301	EAST BAY CLERICAL Holiday Inn 1800 Powell St. Emeryville	Chairman: M. Kizsee	Wednesday 6:00 p.m.	11	8	14	11	9	13
San Francisco									
2401	SAN FRANCISCO CLERICAL Sheraton Palace Market & New Montgomery	Chairman: D. Duffy	Wednesday 5:30 p.m.	11	8	14	11	9	13
2412	SAN FRANCISCO War Memorial Center 6655 Mission St. Daly City	Chairman: S. Lee	Wednesday 7:30 p.m.	4	1	7	4	2	6
Stockton									
2511	STOCKTON Jester's Club 6011 N. West Ln.	Chairman: R. Moore	Thursday 7:30 p.m.	12	9	8	12	10	14
2512	ANGELS CAMP Veterans Hall Main Street	Chairman: W. Fippin	Thursday 5:00 p.m.	5	2	1	5	3	7
2513	JACKSON Native Sons Hall Court Street	Chairman: W. Johns	Tuesday 7:30 p.m.	3	7	6	3	1	5
2514	TRACY Norms Pizza Parlor 2227 Tracy Blvd.	Chairman: R. Kerr	Wednesday 5:00 p.m.	11	8	14	11	9	13
2515	MODESTO Sundial Lodge 808 McHenry, Rm. #138	Chairman: B. Morante	Wednesday 7:30 p.m.	11	8	14	11	9	13
2516	LODI Carpenters Hall Local 1418 15417 North Lower Sacramento Road	Chairman: G. Mai	Wednesday 7:30 p.m.	4	1	7	4	2	6
				Jan.	Feb	Mar	Apr	May	Jun

PLAN TO ATTEND

IBEW LOCAL 1245 UNIT MEETINGS

				Jan	Feb	Mar	Apr	May	Jun
2517	SONORA Elks Lodge	Chairman: J. Robinson	Thursday 7:30 p.m.	19	16	15	19	17	21
2518	MODESTO IRRIGATION DISTRICT Sundial Lodge 808 McHenry, Rm. #138	Chairman: D. Pittman	Tuesday 7:30 p.m.	10	14	13	10	8	12
Pacific Gas Transmission									
3021	SANDPOINT	Chairman: T. Touchon	Wednesday 5:00 p.m.	25	22	28	25	23	27
3023	WALLA WALLA Touchet Fire Station	Chairman: L. Thomas	Wednesday 7:00 p.m.	11	8	14	11	9	13
3024	REDMOND Pietro's Pizza 413 W. Glacier St.	Chairman: O. Walters	Tuesday 7:00 p.m.	10	14	13	10	8	12
Humboldt									
3111	EUREKA Labor Temple 9th & E Streets	Chairman: J. Russell	Tuesday 7:30 p.m.	10	14	13	10	8	12
3112	GARBERVILLE Fireman's Hall Locust Street	Chairman: T. Hensley	Thursday 5:00 p.m.	12	16	15	12	10	14
3113	WILLOW CREEK Willow Inn Hwy. 299 East	Chairman: W. Skoonberg	Thursday 5:00 p.m.	19	23	22	19	17	21
Shasta									
3212	REDDING Hospitality House 532 N. Market	Chairman: S. Fox	Tuesday 7:30 p.m.	3	7	6	3	1	5
3213	BURNEY Veterans Memorial Hall	Chairman: R. Trunnell	Thursday 7:30 p.m.	12	16	15	12	10	14
3216	TRINITY New York Hotel Weaverville	Chairman: A.W. Wells	Tuesday 7:30 p.m.	10	14	13	10	8	12
Nevada									
3311	RENO IBEW Hall 2713 E. 4th Street	Chairman: D. Moler	Wednesday 7:30 p.m.	4	8	7	4	2	6
3312	CARSON CITY Carson Fire Station	Chairman: D. Plank	Monday 6:00 p.m.	9	13	12	9	14	11
3313	YERRINGTON ** Fire Station	Chairman: J. Collins	Tuesday * 6:00 p.m.	3	7	6	3	1	5
3314	SOUTH LAKE TAHOE Moose Lodge	Chairman: R. Kostka	Thursday 6:30 p.m.	5	2	1	5	3	7
3315	ELY Mt. Wheeler Fire Dept. Mtg. Hall	Chairman: D. Strausburg	Tuesday 4:15 p.m.	17	21	20	17	15	19
3316	RENO MANUFACTURING Carpenter's Hall 1150 Terminal Way	Chairman: J. Davis	Thursday 4:45 p.m.	12	9	8	12	10	14
3317	WINNEMUCCA Nixon Hall	Chairman: M. Roper	Tuesday 7:00 p.m.	10	14	13	10	8	12
3318	ELKO Stockmen's Hotel Elko	Chairman: M. Dykstra	Wednesday 7:30 p.m.	18	22	21	18	16	20
DeSabra									
3412	QUINCY Moons Restaurant Lawrence Street Stone Building	Chairman: M. Vrooman	Wednesday 7:00 p.m.	4	8	7	4	2	6
3417	PARADISE Forbes Garage 5570 Vista Way	Chairman: B. Lovett	Thursday 7:30 p.m.	5	9	8	5	3	7
Drum									
3511	AUBURN Moose Lodge Sacramento & High	Chairman: T. Smith	Tuesday 7:00 p.m.	10	14	13	10	8	12
3512	ROSEVILLE Villa Rosa Rest. 1704 Douglas Bl.	Chairman: D. Wojdac	Monday 5:00 p.m.	9	6	5	9	7	4
3513	GRASS VALLEY Nevada County Sportsman Banner Mtn. Trail	Chairman: W. Webber	Tuesday * 7:30 p.m.	10	7	6	10	8	5
Colgate									
3611	MARYSVILLE Petrocelli's 1235 Bridge St. Yuba City	Chairman: J. Osburn	Tuesday 6:00 p.m.	3	7	6	3	1	5

				Jan	Feb	Mar	Apr	May	Jun
3613	OROVILLE Eagles Hall 2010 Montgomery St.	Chairman: A. Knudsen	Thursday 6:00 p.m.	5	2	1	5	3	7
North Bay									
3711	MARIN COUNTY Sams 209 Third Street San Rafael	Chairman: L. Wood	Thursday 5:30 p.m.	12	9	8	12	10	14
3712	SANTA ROSA El Rancho Tropicano	Chairman: H. Stiefer	Tuesday 8:00 p.m.	3	7	6	3	1	5
3714	UKIAH Ukiah Grange South State St.	Chairman: K. Wilson	Wednesday 7:30 p.m.	4	8	7	4	2	6
3715	LAKEPORT Bank of Lake County Main St., Lakeport	Chairman: J. Scott	Tuesday 8:00 p.m.	3	7	6	3	1	5
***3716	NAPA/VALLEJO Showbiz Pizza 235 Larwin Pl.	Chairman: D. Falk	Thursday 7:00 p.m.	5	2	1	5	3	7
3717	FORT BRAGG — POINT ARENA Masonic Temple 428 No. Main Fort Bragg	Chairman: D.C. McDonell	Thursday 5:00 p.m.	5	9	8	5	3	7
***New Unit.									
Sacramento									
3811	SACRAMENTO Local Union Ofc. 1414 21st St.	Chairman: D. Norris	Tuesday 6:00 p.m.	3	7	6	3	1	5
3812	VACAVILLE Brigadoon Lodge 1571 E. Monte Vista	Chairman: J. Runswick	Thursday 7:00 p.m.	12	9	8	12	10	14
3813	PLACERVILLE The Hoosegow 2864 Ray Lawyer	Chairman: G. Park	Wednesday 5:00 p.m.	11	8	14	11	9	13
3814	WOODLAND American Legion Hall Post 77 523 Bush Street	Chairman: J. Rutledge	Thursday 5:30 p.m.	5	2	1	5	3	7
3011	SACRAMENTO REGIONAL TRANSIT 1414 21st Street Suite B., Sacramento	Chairman: R. Ruiz	Wednesday 4:30 p.m.	11	8	7	11	9	6
3911	SACRAMENTO MUNICIPAL UTILITY DISTRICT Dante Club 2330 Fair Oaks Bl. Sacramento	Chairman: J. Callahan	Wednesday * 4:30 p.m.	4	8	7	4	2	6
3912	FRESH POND (SMUD) Moose Lodge Hwy. 50-Frontage Road, Camino	Chairman: E. Anderson	Tuesday 4:30 p.m.	3	7	6	3	1	5
3913	RANCHO SECO Community Center Herald Store Herald	Chairman: B. Knox	Tuesday 4:15 p.m.	10	14	13	10	8	12
* Time Change.									
Citizens Utilities Company									
4012	SUSANVILLE Grand Cafe Main Street	Chairman: H. Edwards	Tuesday 7:30 p.m.	10	14	13	10	8	12
4013	ALTURAS Rancho Steak House Hwy 299E	Chairman: J. Belle	Wednesday 5:30 p.m.	11	15	14	11	9	13
4014	ELK GROVE Pizza Barn 8610 Elk Grove Blvd.	Chairman: V. Wolniewicz	Wednesday 5:30 p.m.	18	15	21	18	16	20
4015	BURNEY — C.U.C.C. Sams Pizza Hwy 299E	Chairman: D. Monath	Thursday 5:30 p.m.	12	16	15	12	10	14
4016	REDDING Shakey's Pizza 2600 Churn Creek Rd.	Time, Dates To Be Announced							
Outside Construction									
4911	OUTSIDE CONSTRUCTION 1414 21st Street Suite B Sacramento	Chairman: T. Heyl	Saturday 10:00 a.m.	14	11	10	14	12	9
4912	OUTSIDE LINE 170 W. San Jose Claremont	Chairman: C. Peterson	Wednesday 8:00 p.m.	11	8	7	11	9	6
				Jan	Feb	Mar	Apr	May	Jun

General Construction	Public Agencies	Trees
1514 under San Jose	1411 City of Santa Clara	4411 under San Jose
2312 under East Bay	2211 City of Oakland	
3815 under Sacramento	3911 S.M.U.D.	
	3912 Fresh Pond (S.M.U.D.)	

* Time Change.
** Meeting Place Changed.

Shop Stewards learn how to best handle stress

IBEW Local 1245 recently presented a workshop for East Bay and General Construction Shop Stewards on ways to best deal with stress. Speakers included attorney Abby Ginzberg, and Aaron Back of the Institute for Labor and Mental Health in Oakland.

Shop Stewards attending the recent East Bay and General Construction Shop Stewards Workshop included: Randy Abbott, Gary Abrahamson, Leroy Adams, George Adas, Yoko Ball, Eddie Beasmer, Larry Benze, Finlay Boag, Willis Buck, Bob Callender, Al Calleros, Ed Caruso, Stan Clark, Richard Cowart, James Davis, Nannette Dominguez, Tanya Ferreira, James Foster, Sr., John French, Robert Garcia, Ray Gerber, Thomas Gomez, Steve Gutzwiller, William Hartwell, Tim Healy, Steve Hernandez.

Lowell Hill, Jerry Hoops, Robert Houchins, Dick Hoyer, Barry Humphrey, Rodney Jordan, Bob Madearos, Ramon Marin, Bob Martin, Hal McClure, Michael McKinney, Ed Medina, David Meier, David Mitchell, Dean Mooney, John Overy, Gary Phillips, Sal Riccabona, John Roberts, Frank Robertson, John Robnik, Al Salinas, Frank Sammartino, V.C. Sand, Ray Shepherd, William Smith, Tod Souza, Gary Surfus, Linda Weeks, Julie Williams, Kenneth Williams, Tom Young, Ron Zunino.

IBEW Local 1245 staff at the workshop included Business Representatives Joel Ellioff, Wayne Greer, Veodis Stamps, Sam Tamimi, Joe Valentino, Gene Wallace and Ron VanDyke. Other staff included Assistant Business Manager Ron Fitzsimmons and Industrial Hygienist Juliann Sum.



Above, Aaron Back, center, discusses role-playing assignment with members Dick Hoyer, left, and Dean Mooney, right. Below, role playing gets underway.



← STEWARDS →



← STEWARDS

← STEWARDS



Time to prepare for Scholarship Contest; 'Comparable Worth' is topic for 1984 essay

AL SANDOVAL MEMORIAL COMPETITIVE SCHOLARSHIP

● The purpose of the scholarship contest is to provide a grant in aid to students for scholarships to colleges and junior colleges, thereby making financial assistance toward the attainment of a higher education.

1. The grant will be as follows:

\$500.00 per year, up to four (4) years, as long as a C (2.0) average is maintained and the parent maintains their membership in good standing in Local Union 1245.

2. In order to be a candidate in this contest, you must be a daughter or son, natural, legally adopted or a legal ward of a member of Local Union 1245. You must also be a high school student who has graduated or is graduating in the year of the contest. A copy of your diploma or a letter from your high school stating that you will graduate in (the year of the contest) must be attached to your scholarship application.

3. The Scholarship Grant will be made only to that candidate who intends to enroll in any college certified by their State Department of Education and accredited by the Local Accrediting Association.

Applications may be secured by addressing the Recording Secretary of Local Union 1245 or by calling the Union Office or by using the form printed in the Utility Reporter.

4. Checks will be paid directly to the college upon presentation of tuition bills to the Local Union.

5. All applications shall be accompanied with a written essay, not to exceed five hundred (500) words, on the subject "COMPARABLE WORTH — LABOR ISSUE FOR THE 1980S."

6. Essays should be submitted on 8-1/2" x 11" paper, on one side, preferably typed and double spaced with applicant's written signature at the conclusion of the essay.

7. Applications and essays must be mailed to I.B.E.W., Local Union 1245, P.O. Box 4790, Walnut Creek, California 94596, by registered or certified mail only, and be **postmarked no later than the first Monday in March of each year.**

8. Each year the scholarship shall be presented at the Advisory Council meeting in May; the contest Judge and a guest, and the recipient and parents shall be invited, at Local Union expense.

9. A suitable trophy or plaque shall be purchased by the Local Union, at a cost not to exceed \$75.00, to be presented to the scholarship recipient.

APPLICATION FOR THE AL SANDOVAL MEMORIAL COMPETITIVE SCHOLARSHIP

Sponsored by
LOCAL UNION 1245, INTERNATIONAL
BROTHERHOOD OF ELECTRICAL WORKERS, AFL-CIO

DATE _____

I hereby make application to enter the Competitive Scholarship Contest sponsored by Local Union 1245, I.B.E.W., AFL-CIO:

NAME _____
(Last) (First) (Init.)

ADDRESS _____
(Street) (City) (State) (Zip #)

Date of Birth _____ Home Tel. _____

NAME OF PARENT _____

COMPANY _____

WORK LOCATION _____

I GRADUATED OR WILL GRADUATE FROM _____

HIGH SCHOOL IN _____

WHICH IS LOCATED AT _____

I EXPECT TO ATTEND _____ COLLEGE OR SCHOOL

LOCATION _____

(Candidate's Signature)

This is to certify that the above named candidate is currently enrolled as a student at

_____ and has or will be
(School name)

graduating in _____
(Month and year)

Official's signature and position

This is to certify that I am a member in good standing of Local Union 1245, I.B.E.W. and the Candidate, whose name is signed to this application is my _____, 19____

Parent's signature and Card No.

LOCAL 1245 TRADE & VOCATIONAL SCHOOL GRANT

● The purpose of these grants is to provide aid to the children of members to attain a trade or technical education.

1. The grants will be as follows:

\$500 per year, for up to two years for two candidates, as long as a passing grade is maintained, and a parent maintains membership in good standing in Local Union 1245.

2. In order to be a candidate in this contest, you must be a daughter or son, natural, legally adopted or a legal ward of a member of Local Union 1245. You must be a high school student who has graduated or is graduating in the year of the contest. A copy of your diploma or a letter from your high school stating that you will graduate in the year of the contest must be attached to your application. Additionally, a letter of recommendation from your vocational teacher, department head, or school principal must accompany the application.

Applications may be secured by addressing the Recording Secretary of Local Union 1245, by calling the Union Office, or by using the form printed in the Utility Reporter.

3. The grant will be made only to a candidate who intends to enroll in any industrial, technical or trade school, other than correspondence schools, which are accredited by the National Association of Trade and Technical Schools or the Association of Independent Colleges and Schools.

4. Applications must be mailed to IBEW, Local Union 1245, P.O. Box 4790, Walnut Creek, California 94596, by registered mail or certified mail only, and be postmarked no later than the first Monday in April of each year.

5. Two names will be drawn by the Judge of the Competitive Scholarship Contest from those submitting applications. These two will be the recipients of the grants.

6. Checks will be paid directly to the school upon presentation of tuition bills to the Local Union.

7. Presentation of awards will be made to recipients at the Unit Meeting nearest to his or her residence following the drawing.

APPLICATION FOR THE LOCAL 1245 TRADE & VOCATIONAL SCHOOL GRANT FOR MEMBERS' CHILDREN ENROLLING IN TECHNICAL, INDUSTRIAL, OR TRADE SCHOOLS

CANDIDATE'S
NAME _____ BIRTHDATE _____

STREET _____ CITY _____

STATE _____ ZIP _____ PHONE _____

HIGH SCHOOL _____ GRADUATION DATE _____

ADDRESS OF HIGH SCHOOL _____

WHAT SCHOOL DO YOU EXPECT TO ATTEND? _____

WHERE IS IT LOCATED? _____

WHAT TRADE OR CRAFT WILL YOU BE STUDYING? _____

WHY THIS PARTICULAR SKILL? _____

CANDIDATE'S SIGNATURE _____ DATE _____

STATEMENT OF MEMBER/PARENT

Name of Member/Parent _____

Employer _____ Location? _____

I certify that I am a member in good standing of I.B.E.W. Local Union 1245, that Candidate

named above, _____ is my _____ and

that the Candidate will graduate from high school during the term ending _____

Signature of Member/Parent _____ Union Card No. _____

This is to certify that the above named candidate is currently enrolled as a student at

_____ and has or will be
(School name)

graduating in _____
(Month and year)

Official's signature and position

WHICH WAY DID THEY GO?

Reports show one million jobs have disappeared

The following article by economist Robert J. Samuelson appeared in the October 31 issue of the Los Angeles Times.

Somewhere out there a million jobs are missing. They are either real jobs or a statistical mirage. Over the next few months the reality ought to become clear. The answer will give a much better picture of both the current economic recovery and the political climate for next year's election.

Government employment figures come from monthly surveys of households and businesses. The household survey questions 60,000 families about who is working, who

isn't and who wants work. The other survey polls 200,000 business places to see how many people are actually on their payrolls.

From December, 1982, to last month the household survey shows employment rising 2.85 million; by the payroll survey the increase is only 1.8 million. Unemployment rates are always calculated from the payroll survey imply a September rate of 10.2%, not the 9.3% reported.

Which is correct? Probably neither. The payroll sample attempts to reflect what is happening in sectors representing 90% of all employment. Missing are farm workers, the self-employed and

household workers. Likewise the survey may miss jobs at newly created firms — a significant omission during a recovery.

But the household survey is hardly flawless. Its 60,000 families constitute less than 0.1% of the work force. This sample is much smaller than the roughly 35 million workers in the payroll survey. The statistical adjustment to estimate total employment for the household survey is far less reliable.

What appears shaky to statisticians, though, is presented to the public as solid. The apparent drop in joblessness has quieted the economic-policy debate.

But the quiet could be momen-

tary. Recent unemployment has clearly been the worst since the war — not only in magnitude but also in nature. Male unemployment has rarely before exceeded female unemployment. Now it does. In September adult men (20 and over) had an 8.7% rate, compared with 7.8% for adult women.

The sense that these problems are gradually but progressively subsiding depends critically on the reality of those 1 million jobs. If they turn out to be a statistical fiction, the economic debate could instantly reignite — with unpredictable consequences.

OUTSIDE LINE

By Jerry Robinson, Business Representative

Business Manager Jack McNally recently appointed new Business Representatives to the IBEW Local 1245 staff in the Southern District.

There are now two Representatives working out of the Southern District office in Outside Line Construction.

The new Representatives are Journeyman Linemen and each has served as Local 1245 Unit Chairmen, and have participated widely in Union activities.

Curt Peterson, a 27-year member of IBEW, and former Unit Chairman in the Southern District, Claremont, was appointed to staff in early October.

Tommy Heyl, an 18-year member

of IBEW, and former Unit Chairman in the Northern District, Sacramento, has been on staff since mid-September.

Peterson works mainly with members throughout the extensive



Curt Peterson, new Business Representative.

greater Los Angeles area. Heyl is assigned to the San Diego area where approximately 250 members are working on the San Diego — Yuma 500 Kv power line, as well as a number of distribution jobs.



Tommy Heyl, new Business Representative.

Outside Line also has a new Dispatcher in the Southern District office in Claremont. She is Charlee Chandler, who was formerly employed by IBEW Local 40 in Hollywood.



New Dispatcher, Charlee Chandler.

JOURNEYMAN

Jeri Keeler, new Lineman



Next month meet Jeri Keeler, new Journeyman Lineman, working out of the PG&E San Rafael yard in the North Bay.

LEAVE DRIVING TO SCABS

Don't ride 'That' bus; Labor backs boycott

The Greyhound Corporation's attempt to force more than 12,000 employees to accept contract takeaways that would slash their wages and fringe benefits by 25 percent despite the fact that Greyhound's third quarter profits were among the largest it's ever had began to boomerang this week as the nation's entire labor movement rallied to the striking workers' defense.

In Washington, AFL-CIO Presi-

dent Lane Kirkland announced a nationwide boycott against Greyhound yesterday.

Shortly after the strike began Nov. 2, Kirkland had informed John W. Rowland, president of the Amalgamated Transit Union, that the AFL-CIO "fully supports" the union's strike against Greyhound Lines, Inc., saying:

"We are well aware of this company's refusal to continue negotiations, its rejection of arbitration

and its determination to force your members to accept unilateral and unjustified wage and working condition concessions.

It is clear to me that Greyhound is seeking to take advantage of its workforce at a time when the economic policies of the Reagan Administration have created massive unemployment and insecurity for millions of Americans."

