



UTILITY REPORTER

OFFICIAL VOICE OF IBEW LOCAL UNION 1245 AFL-CIO

Local 1245 members at PG&E ratify new contract by large, 3 to 1 margin vote

Local 1245 members employed by PG&E ratified a new one-year contract last month by an overwhelming three-to-one margin.

The new contract which went into effect January 1 of this year calls for a 7 percent wage hike and an increase in the pension bands.

"We're pleased that our members supported the new contract, and now we're gearing up for re-opening subsequent bargaining in May," Business Manager Jack McNally said as news of the final voting tally was reported.

Bargaining for 1984 is set to get underway in May of this year. The new contract has locked in guarantees of additional wage increases if no tentative agreement for 1984 is reached by September 1, 1983.

Nearly 50% of the members at PG&E voted in the election, casting 5655 votes in favor and 1910 votes against the package.

Balloting was held by mail with members voting over a two-week period, with Dec. 29, 1982, as the cutoff date for ballots to be received.

The Union's General Bargaining Committee, headed up by spokesperson Manny Mederos, Assistant Business Manager, met with the Company over a four-month period of negotiations.

After recommending the package, members of the Bargaining Committee met at various Local 1245 Unit Meetings and Shop Steward conferences to discuss details with the membership.

Participating in the count of the ballots were members of the Ballot



Ballot Committee members hard at work. Pictured, l-r, facing camera are Ron Blakemore, Ron Moon, Ron Ferrari and Julian Evans.



Pictured, l-r, Mike Aiello, Harvey Iness, Larry Wood, and Ron Field.



Pictured, l-r, are Larry Wood, Harvey Iness and Leroy Adams.



Charles Larsen

Committee: Leroy Adams, Michael Aiello, Bob Austin, Ron Blakemore, Julian Evans, Ron Ferrari, Ron Field, Charles Larsen, Ron Moon and Larry Wood, all tellers, and Harvey Iness, Ballot Committee Judge.

Total Ballots received in the Post Office Box at 10:00 A.M. on Wednesday, December 29, 1982

PHYSICAL	6012	CLERICAL	1606
YES Ballots	4408	YES Ballots	1247
NO Ballots	1566	NO Ballots	344
Uncertified and Void	38	Uncertified and Void	15

Memorials

Local 1245 has lost two dedicated members, Roy D. Murray, retired Business Representative, and Office Manager Nancy Avila. In this issue of the Utility Reporter a tribute to Roy was prepared by his close friend and former colleague Assistant Business Manager Orville Owen. In his Point of View column on page 3, Business Manager Jack McNally remembers Nancy, who was so highly respected by us all.

Nominations for Local 1245 officers open in March

A new time table for Local Union elections goes into effect this year as a result of recent bylaws changes. Previously members had made nominations at April meetings.

Nominations for Local 1245 offices will now be open at all March Unit Meetings of the membership.

Local Union bylaws Article III provides for nominations for the following offices: President, Vice President, Recording Secretary, Treasurer, Business Manager-Financial Secretary, Southern Area Executive Board Member, Northern Area

Executive Board Member, Central Area Executive Board Member, At-Large Executive Board Member, and Advisory Council Seats.

Per Article III, Section 2 of our Local Union bylaws, the office of Financial Secretary shall be combined with the office of Business Manager and must be filled by a member holding an "A" membership (EWBA) as required by the IBEW Constitution.

All members throughout the

See PAGE TWO

Roy D. Murray...a tribute

By Orville Owen, Assistant Business Manager

These are the formal statistics recorded regarding former Local 1245 Business Representative Roy Murray who has just passed away. Of course, they do not reflect what an outstanding man he was.

His service to Local 1245 and its members goes back many decades with its early beginnings to members in Northern California and Nevada. Beyond his total commitment to his work and Local 1245 he was a well rounded family man and a real true friend to me and thousands of Local 1245 members.

My acquaintance with Roy went back to 1954 when I first was a Shop Steward at Sierra Pacific Power Company and Roy was my Business Representative and continued when I later came on staff in 1963.

He was one of the most

methodical and organized persons I've ever known. He always had all the facts well at hand and developed and used them to best serve the members he serviced.

After having been on staff for some 22 years he became the very first Local 1245 staff employee to retire. Roy and his lovely wife, Caryl, retired to Placerville in 1976. Although he was retired by Local 1245, he continued to attend Unit Meetings and talked to members and stayed politically active, dedicated and concerned about the future of the Local Union he loved so much. Shortly after his retirement, tragedy struck with a lengthy terminal illness and he passed away last month.

I, as well as many thousands of Union members he served so well, will miss him.



Nominations open for Local 1245 officers in March at Unit Meetings

Utility Reporter

JANUARY 1983

VOLUME XXXI NUMBER 1

CIRCULATION: 24,000

(415) 933-6060

Business Manager
& Executive Editor

JACK McNALLY

Managing Editor

CAROL BEDSOLE

President

Howard Stiefer

Executive Board

Nannette Dominguez

Jay Burton

William Peitz

Barbara Symons

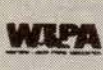
Kathy Tindall

Ray Friend

Published monthly at 3063
Citrus Circle, Walnut Creek,
California 94598. Official
publication of Local Union 1245,
International Brotherhood of
Electrical Workers, AFL-CIO,
P.O. Box 4790, Walnut Creek,
CA 94596.

Second Class postage paid at
Walnut Creek and at additional
mailing offices. USPS No.
654640, ISSN No. 0190-4965.

POSTMASTER: Please send
Form 3579, Change of Address,
and all correspondence to
Utility Reporter, P.O. Box 4790,
Walnut Creek, CA 94596.



Credit

Lifeline: Principal writer, Juliann Sum,
Industrial Hygienist

Correction:

In the last issue Rodney Krick,
Outlaw Softball Tournament director,
was wrongly identified as Roger.

From PAGE ONE

jurisdiction are eligible to participate in the general nomination and election of Local 1245 officers and of the Local's Business Manager-Financial Secretary.

Local 1245 members employed in varying Southern, Central, Northern and At-large areas which are spelled out in the bylaws, shall participate in their specified areas in nominating and electing the various area executive board members, and Advisory Council representatives.

By virtue of the offices, Business Manager-Financial Secretary and President shall be delegates to the IBEW International Convention.

Qualifications of and procedures for nominating candidates are provided in Local 1245 bylaws. Listed here are selected sections of Article III:

Sec. 5. Members elected or appointed to office in the Local Union must be able and available to attend all regular and special meetings and to conduct the affairs of their office

without compensation or expenses other than provided for in Article X herein. Assistant Business Manager(s) and/or Business Representatives shall not be eligible to hold any elective Unit or Local Union office. They shall, however, be eligible to run as delegates to the International Convention.

Sec. 6. (a) Nomination of Local Union officers shall be made under new business at the first meeting of the Units in March 1983 and every three years thereafter. Election of officers shall be conducted in accordance with Article XVIII of the IBEW Constitution and in the manner as further provided for in this Article.

Sec. 11. To qualify as a candidate for Local Union office or Advisory Council Member, a member must have at least two years' continuous good standing in the Local Union immediately prior to March 1st in any election year, and provided his dues for the month of January in any election year shall have been

tendered.

Sec. 12. In order to be a candidate for any Local Union office, Advisory Council member, or delegate to the International Convention, a member must be present at the Unit Meeting where he is nominated, or notify the Local Union Recording Secretary in writing on or before March 1, of election year, that he will run for a specific Local Union office if nominated.

Sec. 13. A member shall not accept nomination for more than one office of the Local Union unless combined under these bylaws. If a member is nominated for more than one office, he must notify the Judge of the Election promptly in writing not later than April 15 for which office he will be a candidate and decline all other nominations for Local Union Offices.

Candidates nominated for the Advisory Council or other Local Union offices may also be nominated as delegates to the International Convention.

FROM SYLVIA PORTER'S COLUMN

'The decline and fall of OSHA'

Reprinted from Sylvia Porter's
"Your Money" column,
December 7, 1982, with
permission of San Francisco
Chronicle.

While our nation is paying a staggering price each year for occupational illnesses and injuries, the one protective organization we have — the Occupational Safety and Health Administration — is moving ever closer to a cozy relationship with industry.

It is not surprising that this is happening under the Reagan administration. I admit it was to be expected. But the extent of OSHA's change of course under the direction of Assistant Secretary Thorne G. Auchter is not known to most of you.

In 1981 alone, workers lost an estimated \$5.1 billion in wages and another \$3.4 billion was paid out in medical expenses. In all industries, on-the-job accidents resulted in

12,300 deaths and 2.1 million disabling injuries. Total estimated costs for '81 topped \$32.5 billion.

OSHA was created by Congress in 1970 to reduce these horrifying statistics and to give us a safer and healthier workplace. About 2 million workplaces and more than 40 million workers are covered.

In the past, OSHA has been criticized as too aggressive and some of its regulations have been routinely cited as downright silly.

But not even the most severe critics have asked for the gutting of OSHA through the tools, inspections and standards considered to be OSHA's heart and soul. Figures published in the Occupational Safety & Health Reporter, a private newsletter, show this. They were compiled by the AFL-CIO from OSHA's own federal compliance activity reports and compare activity from January through October 1980 with activity from October 1981 through June 1982. A dra-

matic fall-off in enforcement activities is disclosed, with the exception of an 11 percent gain in general-schedule inspections of work sites.

This "exception" is misleading. Many inspections actually are limited to a review of employers' records rather than a comprehensive inspection. The OSHA inspector can decide that, if the records show a rate of accidents better than the national average, no further inspection is needed.

Another widely publicized move was to target specific industries, those known to be especially hazardous, for inspection. In one stroke, this effectively undermines one of OSHA's chief weapons — the threat of an unannounced inspection — and erodes the protection of about 13 million workers who are in "untargeted" industries.

Meanwhile, the proportion of initial inspections that results in citations has dropped 11 percent — despite the emphasis on high hazard industries. The number of Serious Citations issued has plunged 51 percent and Willful Citations, a precipitous 89 percent.

At the same time OSHA has eased penalties for safety and health violations (it can be proved) and encouraged regional offices to reduce fines and reduce, too, the number of contested citations. Now, any penalty above \$10,000 must be approved in Washington. Between April 1981 and March 1982, there were six such fines as compared with October 1979 to September 1980, when OSHA levied almost 100 penalties of at least \$10,000.

CHANGE OF ADDRESS

If you have just moved, or are about to move, please complete this form to insure your continued receipt of all Union mail. Send completed form and your mailing label from the front page to:

UTILITY REPORTER

P.O. Box 4790

WALNUT CREEK, CA 94596

Old label: _____

Name _____

New Address _____

(Street and Number)

(City and Zip Code)

APPOINTMENTS

CITIZENS UTILITIES

CITIZENS UTILITIES NEGOTIATING COMMITTEE

Mary Ann Kostick
Susan Russell
Dave Monath
Joe Aquilio
Joe Belle

C. P. NATIONAL — LASSEN DISTRICT

C. P. NATIONAL — LASSEN DISTRICT NEGOTIATING COMMITTEE

Gary Robertson
Richard Gallagher

MONTEREY PENINSULA CABLE TV

MONTEREY PENINSULA CABLE TV NEGOTIATING COMMITTEE

Terry Linebarger

PACIFIC GAS AND ELECTRIC COMPANY

GAS METER REPAIR PLANT TRAINING COMMITTEE

Steve Donahue
Tom Gomez
Gary D. Presley

LOCAL UNION 1245

HEALTH AND SAFETY COMMITTEE

Gino Aramini

CENTRAL LABOR COUNCILS

SAN FRANCISCO CENTRAL LABOR COUNCIL

Svend R. Petersen

ALAMEDA COUNTY CENTRAL LABOR COUNCIL

Louise Music
Tim Healey

SONOMA-MENDOCINO-LAKE COUNTIES CENTRAL LABOR COUNCIL

Ocean

CONFERENCES AND CONVENTIONS

WOMEN IN THE WORK FORCE

Olga Estrella	Dave Reese
Dorothy Fortier	Sam Tamimi
Darrel Mitchell	Cindy Vallejo
Wayne Weaver	

SHASTA DAM AREA PUBLIC UTILITY DISTRICT

SHASTA DAM AREA PUBLIC UTILITY DISTRICT NEGOTIATING COMMITTEE

Michael Dally

CP-NATIONAL, LASSEN DISTRICT

CP-NATIONAL, LASSEN DISTRICT, NEGOTIATING COMMITTEE

Joann I. Villalovos
Kevin Scott Merrill
Richard Gallagher

PACIFIC TREE EXPERTS

Douglas Bonham
Richard Waistell
Harry Beckwith
Sebastian Vargas

POINT OF VIEW

By Jack McNally

IBEW 1245 Business Manager



McNally looks at economy;
thanks Negotiating Committee,
remembers a friend, Nancy Avila
and retiree, Roy D. Murray

● As we begin 1983, there are some changes on the State and Federal leadership scene. In the Congress there were some Democratic seat gains. Hopefully, with these changes the Reagan Administration and the new Congress can get their act together and do something constructive that will get our economy back on the right track.

On the State scene we have a new Republican governor and a slightly changed Democratic legislature. With the new Republican governor comes new heads for the various State agencies. The attitude and background of the new appointees will influence the future direction of the State agencies, which may not be in the best interest of organized labor. What all of the politicians must get serious about is turning around the sad state of today's economy, and they must realize that some new approaches are needed to bring about an end to the unemployment problems across the country.

● Members employed by PG&E ratified the results of bargaining on December 30, 1982, which became effective on January 1, 1983. This is the first time a PG&E offer was ratified on time in 20 years. I feel the membership made an intelligent decision, and the Negotiating Committee appreciates the support. The Negotiating Committee was faced with some tough bargaining and some tough decisions. They worked hard, and I want to thank them for a good job, well done. We are now getting ready for early bargaining with PG&E, and hopefully 1983 will provide a better climate for bargaining.

● On a sad note, we have suffered the loss of two close friends of Local 1245. Our office manager, Nancy Avila, a victim of cancer, recently passed away. I'd known and worked with Nancy since she first came to work for Local 1245. She always gave that extra effort, and her concern for others constantly overshadowed her concern for herself. She is survived by a loving family, including husband Ellery, and sons Mark, Scott, Jeff and Peter, her mother Anne, her brother Bill, and her stepsister Sally. We share in their loss, and we will miss Nancy greatly.

● Former Business Representative Roy Murray, who was the first Business Representative to retire from Local 1245 also recently passed away. On page one of the Utility Reporter, Assistant Business Manager Orville Owen remembers his friend and colleague in a tribute to this highly respected former Business Representative..

In Memoriam

Nancy A. Avila

May 21, 1932

January 8, 1983

In Memoriam

Roy D. Murray

May 19, 1910

December 9, 1982

Avoiding job hazards; how to get information

Getting the information on the health and safety conditions in your particular workplace is one of the first steps in dealing with job hazards.

By law, you are legally entitled to certain records and reports from your employer about these conditions. Your employer must provide you with copies or allow you to make photocopies of the records and reports within 15 days of your request. The regulations which govern your rights are entitled "Access to Employee Exposure and Medical Records" and are enforced by Federal OSHA and state occupational safety and health enforcement agencies.

Here are the types of records and reports which you are entitled to receive:

Company reports

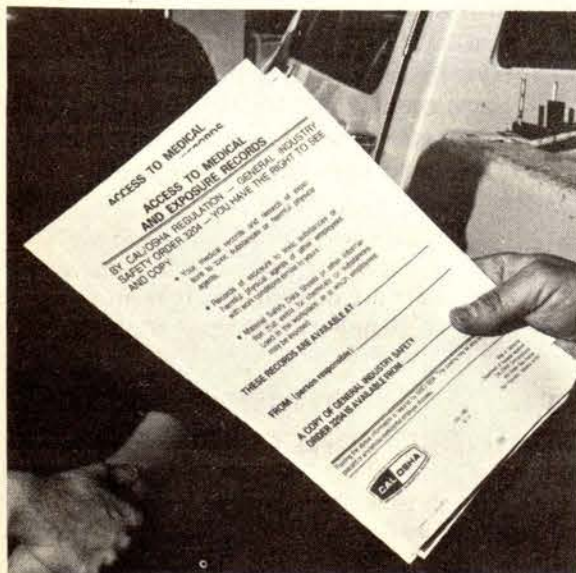
You can obtain the company's laboratory analysis reports on the substances and physical agents in your workplace and the company's industrial hygiene measurements of employee exposures. You can also obtain the company's medical records of problems which may be related to job hazards, as long as written consent statements are signed by the employees involved. The medical records may include measurements of the toxic contaminants in the body as well as evaluations of possible illness. The company is also required to provide you access to their analyses of the industrial hygiene reports and medical records.

These company reports are not necessarily the final word on



Photos: Carol Bedsole

Industrial Hygienist Juliann Sum meets with IBEW Local 1245 Shop Stewards Bill Sullivan, right, Machinist with PG&E, and Tod Souza, left, Gas Serviceman with PG&E, who recently utilized their rights of access to company records. Sullivan's request for health and safety information pertained to a material called "NO-OX-ID," which is being used at the Materials facility in Emeryville. Souza's request for health and safety information pertained to "3D" brand leak detection compound.



Souza examines a Cal/OSHA poster which contains information that employers are required to post at worksites.

The information provided in this article is contained in the LIFELINE health and safety manual, which has been produced for IBEW Local 1245 members. This year, all Shop Stewards will have the opportunity to receive training on the LIFELINE manual in Stewards' training meetings. Therefore, we recommend that you contact your Shop Steward regarding any questions you have about health and safety and your legal rights.

By Juliann Sum, Industrial Hygienist

whether or not a hazard exists in your workplace. However, they can help guide you towards possible problem areas.

Material Safety Data Sheets

Even if the company has not conducted industrial hygiene, laboratory, or medical tests for the substances in question, you can still request Material Safety Data Sheets, which are provided to your employer by the manufacturer. Although in reality, MSDS's are often incomplete and not accurate, they can be used as a first step in evaluating the substances in your workplace. In many cases, it is not possible to conduct laboratory analysis of a substance without first knowing certain basic chemical information that should be given in the MSDS.

You can sometimes use the information in MSDS's to know what workplace conditions and medical problems to watch out for. You may also be able to use the information to notify your employer of recommended safety precautions that are not necessarily being followed.

The State of California has adopted regulations requiring your employer to actively seek MSDS's on all products to which you are exposed and to provide you special training on the hazards. These regulations, contained in Section 5194 of the Cal/OSHA General Industry Safety Orders and entitled "Material Safety Data Sheets," are scheduled to go into effect on March 1, 1983.

How to obtain the records and reports

We recommend that you make your requests for any of these records and reports to your supervisor in writing. Cite the 15-day deadline in the OSHA and state regulations. If you need a copy of the regulations, contact your Shop Steward or the OSHA or state agency office in your area.

If you determine that there are no records or MSDS's available to you, we recommend that you see your Shop Steward. In the meantime, try to obtain as much information as possible on the product, including the name and address of the manufacturer. You can then write to the manufacturer, who may provide you the MSDS directly.

Injury and illness records

You are also entitled to see company records about the injuries and illnesses related to the hazards in your workplace. These records are contained in the "OSHA 200 Log and Summary of Occupational Injuries and Illnesses."

Employers with 11 or more employees are required to maintain these records and to post the summary page of the log for at least one month each year. In most states, the posting is required during the entire month of February. We recommend that you check these records for accuracy and completeness.

Material Safety Data Sheet

SECTION V - HEALTH HAZARD DATA		
THRESHOLD LIMIT VALUE		
EFFECTS OF OVEREXPOSURE		
EMERGENCY AND FIRST AID PROCEDURES		
SECTION VI - REACTIVITY DATA		
STABILITY	UNSTABLE	CONDITIONS TO AVOID
INCOMPATIBILITY (Materials to avoid)		
HAZARDOUS DECOMPOSITION PRODUCTS		
HAZARDOUS POLYMERIZATION	MAY OCCUR	CONDITIONS TO AVOID
SECTION VII - SPILL OR LEAK PROCEDURES		
STEPS TO BE TAKEN IN CASE MATERIAL IS RELEASED OR SPILLED		
WASTE DISPOSAL METHOD		
SECTION VIII - SPECIAL PROTECTION INFORMATION		
RESPIRATORY PROTECTION (Specify type)		
VENTILATION	LOCAL EXHAUST	SPECIAL
MECHANICAL (General)		OTHER
PROTECTIVE GLOVES		EYE PROTECTION
OTHER PROTECTIVE EQUIPMENT		
SECTION IX - SPECIAL PRECAUTIONS		
PRECAUTIONS TO BE TAKEN IN HANDLING AND STORING		
OTHER PRECAUTIONS		

U.S. DEPARTMENT OF LABOR Occupational Safety and Health Administration Form Approved OMB No. 44-1337			
MATERIAL SAFETY DATA SHEET			
Required under USDL Safety and Health Regulations for Ship Repairing, Shipbuilding, and Shipbreaking (29 CFR 1915, 1916, 1917)			
SECTION I		EMERGENCY TELEPHONE NO.	
MANUFACTURER'S NAME			
ADDRESS (Number, Street, City, State, and ZIP Code)			
CHEMICAL NAME AND SYNONYMS		TRADE NAME AND SYNONYMS	
CHEMICAL FAMILY		FORMULA	
SECTION II - HAZARDOUS INGREDIENTS			
PAINTS, PRESERVATIVES, & SOLVENTS	%	TLV (Units)	ALLOYS AND METALLIC COATINGS
PIGMENTS		BASE METAL	
CATALYST		ALLOYS	
VEHICLE		METALLIC COATINGS	
SOLVENTS		FILLER METAL PLUS COATING OR CORE FLUX	
ADDITIVES		OTHERS	
OTHERS			
HAZARDOUS MIXTURES OF OTHER LIQUIDS, SOLIDS, OR GASES		%	TLV (Units)
SECTION III - PHYSICAL DATA			
BOILING POINT (°F.)		SPECIFIC GRAVITY (H ₂ O=1)	
VAPOR PRESSURE (mm Hg.)		PERCENT VOLATILE BY VOLUME (%)	
VAPOR DENSITY (AIR=1)		EVAPORATION RATE (1=1)	
SOLUBILITY IN WATER			
APPEARANCE AND ODOR			
SECTION IV - FIRE AND EXPLOSION HAZARD DATA			
FLASH POINT (Method used)		FLAMMABLE LIMITS	
EXTINGUISHING MEDIA		LFL	
SPECIAL FIRE FIGHTING PROCEDURES		UFL	
UNUSUAL FIRE AND EXPLOSION HAZARDS			

WORKSHOPS PLANNED

Stress, and how it affects you in workplace

Stress is one of the most common occupational health and safety problems among our members, according to a survey conducted by the Local Union Safety Committee.

This year, Local 1245 will be sponsoring workshops for all Shop Stewards on recognizing and dealing with the causes of stress among members. The Institute for Labor and Mental Health will conduct these workshops for each Shop Stewards' group at one of the regular Stewards' training meetings held on Saturdays.

In conjunction with the stress workshops, the Local Union will be discussing the new LIFELINE health and safety manual, which the Local Union has produced specifically for its members.

The Institute for Labor and Mental Health is a non-profit organization which has been a pioneer in the

area of occupational stress. Day-time counseling services and Wednesday night diagnostic services, which include medical, legal, and practical assistance, are available at the Institute's Occupational Stress Center in Oakland. Many health insurance plans will cover all or most of the fees, and for those people without insurance, there is an adjusted fee schedule linked to income and number of dependents. For an appointment call (415) 654-9750.

On Saturday, April 16, the Institute will also be holding their Second Northern California Conference on Occupational Stress. At this conference, there will be opportunity to give testimony to elected officials about job stresses. For more information, call (415) 653-6166.

Health group wants Auchter out of OSHA

IBEW Local 1245 Industrial Hygienist Juliann Sum is a member of the Occupational Health and Safety Section, the section of the APHA which initiated this resolution to oust OSHA Chief Thorne G. Auchter.

The nation's largest association of public health professionals has urged President Reagan to replace the chief of the Occupational Safety and Health Administration, Thorne G. Auchter.

The group also urged Congress to immediately implement a number of safety standards which, it claims, have been delayed or weakened since Auchter took office.

Both recommendations are included in a resolution passed by the American Public Health Association last November at its annual meeting. The 50,000-member group has been critical of OSHA and the Environmental Protection Agency in the past, but this was its first formally adopted resolution to that effect.

While the final resolution doesn't mention Auchter by name, Zoe Clayson, speaking for APHA, said its "intent is clear."

"The resolution makes it clear that we want an assistant secretary (of occupational safety and health) who is a health professional and is dedicated to promoting the health and safety of the worker," Clayson said. "He is neither a health professional nor dedicated to those goals."

OSHA spokesman Jim Foster said the agency couldn't comment on the resolution because it hadn't seen it. He said Auchter had no intention of resigning.

Auchter contends that OSHA has

become more effective under his control. He has attempted to shed the agency's policeman image and make it more cooperative with businesses in solving health and safety problems. Labor unions contend OSHA is more interested in pleasing businesses than in protecting workers.

The APHA resolution was drafted in April and presented to APHA's Joint Policy Committee. That version accused Auchter and his then-deputy, Mark Cowan, by name of "flagrantly ignoring their statutory mandate of . . . assuring safe and healthful working conditions . . . and seriously weakening the protection afforded to workers." It said Auchter should resign.

APHA's joint committee refused to support the resolution, so its proponents took their battle to the APHA's 262-member governing council, which, after much debate, passed the watered-down version.

It says the Labor Department has unnecessarily stayed sections of an OSHA cancer policy and either exempted companies from meeting or substantially weakened standards that protect workers from lead, cotton dust and noise. All of those standards were drafted during the Carter administration. It also contends that OSHA has been weakened by a number of personnel reassignments.

Clayson said copies of the resolution will be sent to the White House, Congress and APHA's lobbying arm.

Reprint: The Washington Post, Pete Earley, Staff Writer.

PCB standard postponed

The Cal/OSHA Occupational Safety and Health Standards Board, at their monthly business meeting on December 15, 1982, voted to further postpone the adoption of the PCB standard by amending it and holding a fourth public hearing this April. This action follows Local 1245's original petition for the

standard in April of 1980, nine (9) day-long Cal/OSHA advisory committee meetings, and three (3) public hearings in 1981 and 1982. The Local Union is considering possible legal action against the Standards Board to pressure them to adopt the standard sooner than this spring or summer.

Cal/OSHA under Attack

As of press time, the Deukmejian Administration was proposing the elimination of 88 positions in Cal/OSHA. The proposed cuts included the majority of Cal/OSHA's Legal Unit, which has been the

backbone of enforcement in Cal/OSHA.

Similar cuts were being proposed for the Division of Labor Standards Enforcement (Labor Commission).

METER READER ROUNDUP

One of the negotiated items of the new contract between PG&E and IBEW Local 1245 is a joint committee which will discuss issues on Meter Reader conditions. The original wording in the agreement states that the joint committee will report conclusions and recommendations to the General Negotiating Committee. However, a letter of clarification has been arrived at with PG&E that spells out that the intent is to bargain and

reach agreement. The union committee will be headed by Tom Dalzell, legal counsel for Local 1245, along with Meter Readers off the job.

This committee is the result of the number of proposals that were submitted to the General Negotiating Committee last June from Meter Readers throughout the PG&E system. It is expected that discussion with the Company will begin in February.

Per capita increase in dues

As a result of a resolution approved at the recent 1982 IBEW International Convention, per capita dues increased by \$1.00 per month effective January 1, 1983, now totaling \$5.00.

Per capita union dues are the part of your Local 1245 dues that are sent to the International Union in Washington, D.C.

As your wages increase, that portion of your dues which goes to Local 1245 also increases, basically by \$1.00 for each \$100.00 in wage increase. Per capita dues increases, however, result from changes legislated by the delegates at the International Convention. It is not tied to your negotiated wage increase.

New legal help in Coast Valleys

Members working in the Coast Valleys area from Paso Robles to Solvang can now use the law firm of Cunningham and Stewart for up to two per year

free legal consultations. Phone: (805) 466-6577, Address: 4450 El Camino Real, Atascadero, 93423.

IBEW Local 1245 - Year



UTILITY R
OFFICIAL VOICE OF IBEW

January

Vietnam Memorial funds sought

OUTSIDE LINE

North Bay Area

Flood clean-up goes on



Members of Marin County's Ignacio Substation, Sonoma gas crew members are gathered around a flood damaged line. Mike Kautish, left, has been with Local 1245 for 12 years, and Glen Poulter, right, is a 22-year Local 1245 member.

ON THE JOB -

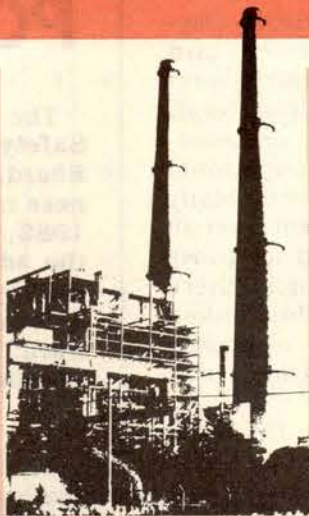
MOSS LANDING POWER PLANT

Olga Estrella, Certified Welder



Crew members with Olga, left to right are: Bob Jones, Harold Barker, Jr., and Chris Hall. Lee Hight, Kim Miller, Ralph Dominguez, Brad Jones.

PUC announces discount probe



Rocky Mountain Power Plant, 10 miles northwest of Denver.

LIFELINE -

HEALTH AND SAFETY

February

Council members hear pros, cons on canal



President Howard Stetler recognizes question from the floor.

Local 1245 banner at Super Bowl



May

Advisory Council - QUARTERLY MEETING



CANDIDATE LIST - INTERNATIONAL DELEGATE ELECTION

EMPLOYEE DISCOUNT: OPEN LETTER TO PUC



Scholarship Award Presented

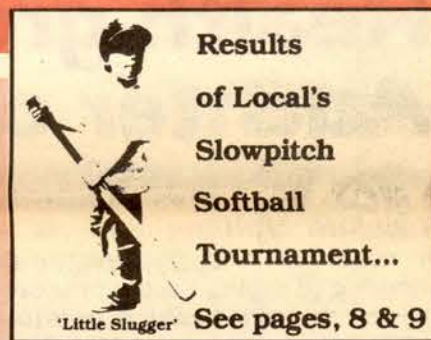
Local 1245 wins key arbitration; grievants awarded back pay, benefits



June

EMPLOYEE DISCOUNT APPOINTMENTS

'Take me . . . out to the ballgame'



IBEW Local 1245's PG&E Negotiating Committee starts work



September

Local 1245 election endorsements: 'Vote Labor for jobs and justice'



BARGAINING REPORT PUBLIC AGENCIES

Union, company exchange new contract proposals



Stop the Reaganomic Tide, Join Labor rally, Oct. 24



Local works to guarantee rights of members

METER READER ROUNDUP

UNION RESOLVES ISSUES

Settlements reached

October



Members reviewing displacement and demotion options.

Members discuss contract proposals at recent northern Unit meetings



Heading up Unit Meeting, l-r, are Ken Wilson, Recorder; Don Betten-court, Chairman, and Business Representative Gibbs.

PUC tea



Government address

UKIAH FT. BR

Unit Res man, Do

'Welc and to

al 1245 - Year In Review, 1982

UTILITY REPORTER

OFFICIAL VOICE OF IBEW LOCAL UNION 1245 AFL-CIO

February

ncil members hear pros,
is on canal



President Howard Steiner recognizes question from the floor.



YOUR LEGAL RIGHTS

Local 1245 banner at Super Bowl



Draper, Arla, Haynes prepare to connect hardware on pole which is framed on the ground.

SHOP STEWARDS

Member Daniel Patrick
receives honor award

—Davey Tree

March

NEVADA SCENE — SIERRA PACIFIC POWER COMPANY

'Fight back' plans viewed
by Utilities Coalition

AWARDS — SENIOR MEMBERS

Senior members honored
at recognition dinner



Medfly
spraying
resumes

Time to vote ne
time for Labor c

Meter readers mee
members attend w



Pictured with Business Manager Jack McNulty, center, are Ron Sharpe, Barbara Cook, Louise Muri, and Inge. Reader Shop Stewards.

April

E
DISCOUNT

TMENTS

he ballgame'



'Little Slugger' See pages, 8 & 9

IBEW Local 1245's PG&E Negotiating
Committee starts work



Governor Jerry Brown, current candidate for U.S. Senate, addressed the convention delegates.

PUC tears into bargaining process



Utility Coalition calls for hands off!

July

LETTERS OF
AGREEMENT

Coalition of
Labor Union Women



Marie Cook, IBEW Local 1974, Omaha, center, with IBEW Local 1245's CLUW delegation. In Ocean, Nannette Dominguez, Carol Bedsole and Dorothy Fortier. Cook was elected to the CLUW Executive Council and Dominguez was elected alternate.

Building Trades Family Jamboree



Discount supported at PUC

Members learn C
Cardio-Pulmonary Resuscitation

San Francisco me
attend Awards D



October



Albany meets with Business Rep
of the elimination of 19 positions
ice it initially affected two Helpers.

READER
UP

ES

ts reached



Members reviewing displacement and demotion options.

Members discuss contract proposals
at recent northern Unit meetings



Heading up Unit Meeting, l-r, are Ken Wilson, Recorder; Don Betten-court, Chairman, and Business Representative Gibbs.



PEOPLE

UKIAH UNIT MEETING —
FT. BRAGG UNIT MEETING



Unit Recorder Rae Nordell, and Unit Chairman, Don McDonnell, right.

'Welcome' city of Gridley
and town of Paradise

November-December



Recognition, memorial plaques
presented at Advisory Council



Sacramento Trai
group prepares
arbitration

70,000 m



Year In Review, 1982

REPORTER

LOCAL UNION 1245 AFL-CIO

POINT OF VIEW

By Jack McNally

IBEW 1245 Business Manager



March



GAL RIGHTS



Draper, Ariz. Haynes prepares to connect hardware on pole which is framed on the ground.

NEVADA SCENE — SIERRA PACIFIC POWER COMPANY

'Fight back' plans viewed by Utilities Coalition

AWARDS — SENIOR MEMBERS

Senior members honored at recognition dinner



Medfly spraying resumes



Time to vote nears; time for Labor candidates

Meter readers meeting; members attend workshops



Pictured with Business Manager Jack McNally, center, are meeting organizers, J. Ron Sharpe, Barbara Cook, Louise Muck and Olga Olson, all East Bay Meter Reader Shop Stewards.

EXPLOSION! PIPE LINE OPERATIONS

You can help when you circulate this petition.

Put this tax cut to work for you.



'SPLIT ROLL' spells tax relief

SHOP STEWARDS

Member Daniel Patrick receives honor award

—Davey Tree



July



Jeffrey Brown, current candidate for U.S. Senate, addresses the convention delegates.

LETTERS OF AGREEMENT

Coalition of Labor Union Women



Marie Cook, IBEW Local 1974, Omaha, center, with IBEW Local 1245's CLUW delegation, J. Ron Sharpe, Nannette Dominguez, Carol Bedsole and Dorothy Fortier. Cook was elected to the CLUW Executive Council and Dominguez, was elected alternate.

Building Trades Family Jamboree



Discount supported at PUC Hearing



Members learn CPR

Cardio-Pulmonary Resuscitation

San Francisco members attend Awards Dinner



August

Dispatch moves to Sacramento



Delegates off to convention



Los Angeles bound... IBEW Local 1245's elected delegates to the IBEW International Convention are travelling south this month as the convention gets underway mid-September in L.A.

November-December



PEOPLE

UNIT MEETING —
AGG UNIT MEETING



me' city of Gridley
own of Paradise

LOCAL UNION 1245, IBEW

AL SANDOVAL
MEMORIAL COMPETITIVE SCHOLARSHIP

On Saturday, November 14, 1982, the Joint Executive Board/Advisory Council of Local Union 1245 made the following motion which was unanimously approved and adopted by the membership:

The sudden death of Business Representative Al Sandoval has left a deep personal sorrow over the members of Local Union 1245's Advisory Council. The loss of this talented and dedicated union member serves to remind us all that we are on Earth for a brief time and that it is the record of accomplishments and the number of friends who are left behind that truly marks one's passing.

Al Sandoval has left behind a large number of friends and admirers who reach considerably beyond this Council and this organization. Each of us extends our sympathy to Al's family, and we share in their grief.

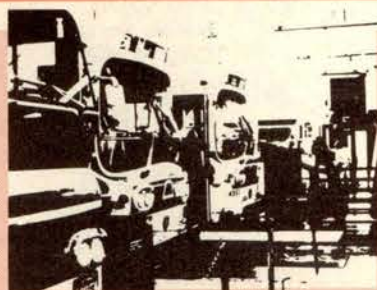
Al Sandoval has also left a record of accomplishments and dedication. For all of us to remember and to emulate. However, there will be those in the future among our membership who will never have the opportunity to meet and to know Al.

Therefore, the Advisory Council believes it would be a suitable honor to create the Local Union's Scholarship program to "The Local Union 1245, IBEW Al Sandoval Memorial Competitive Scholarship."

Proposed to serve as trustee to his daughter:
JESSE SANDOVAL
November 14, 1982

John W. Schmitt
Business Manager

Harold Hays
President



Recognition, memorial plaques presented at Advisory Council



Sacramento Transit group prepares for arbitration



70,000 marchers protest Reaganomics in Solidarity '82 parade



Thousands of IBEW delegates attend international meet in L.A.



San Joaquin				Jan.	Feb.	Mar.	Apr.	May	June
1111	FRESNO								
	Cedar Lane Bowl	Chairman:	Tuesday						
	Cedar & Shields	Tom Garcia	5:30 p.m.	4	1	1	5	3	7
1112	BAKERSFIELD								
	Central Labor Council	Chairman:	Thursday						
	200 W. Jeffrey	Ed Mallory	7:30 p.m.	13	10	10	14	12	9
1113	MADERA								
	DiCicco's	Chairman:	Thursday						
	516 So. I St.	John Souza	7:30 p.m.	6	3	3	7	5	9
1117	WASCO								
	Veteran's Cafe	Chairman:	Monday						
	Poso & 4th St.	T. Caterlin	5:00 p.m.	10	7	7	11	9	6
1118	CRANE VALLEY								
	Sierra Sky Ranch	Chairman:	Wednesday						
	Highway 41	Harold Stein	7:30 p.m.	5	2	2	6	4	8
	Oakhurst, CA 93644								
1119	BALCH								
	Rec. Hall	Chairman:	Tuesday						
		Tom Moore	*7:30 p.m.	11	8	8	12	10	14
1120	SELMA								
	El Conquistador	Chairman:	Thursday						
	Restaurant	Tom Thomas	5:00 p.m.	13	10	10	14	12	9
1121	COALINGA								
	Power Club	Chairman:	Tuesday						
	Jayne & Merced	S. Gillespie	7:30 p.m.	11	8	8	12	10	7
1122	MERCED IRRIGATION DISTRICT								
	Pine Cone Coffee Shop	Chairman:	Thursday						
	2000 E. Childs	John Goodson	7:30 p.m.	13	10	10	14	12	9
1123	MERCED								
	Teamsters Hall	Chairman:	Thursday						
	740 West 19th St.	Don Manning	7:30 p.m.	13	10	10	14	12	16
1124	LOS BANOS								
	Fireman's Hall	Chairman:	Wednesday						
	520 "J" Street	Tom Hunt	7:30 p.m.	12	16	16	13	11	15
Coast Valleys				Jan.	Feb.	Mar.	Apr.	May	June
1211	SALINAS								
	American Legion Hall	Chairman:	Tuesday						
	14 W. Laurel Dr.	J. Delsman	*5:00 p.m.	4	8	8	5	3	7
1212	MONTEREY								
	Two Guys From Italy	Chairman:	Wednesday						
	2030 Fremont St.	G. Carlsen	*5:00 p.m.	18	23	23	20	18	22
1213	KING CITY								
	Pozzi's Stampede	Chairman:	Thursday						
	207 Broadway	Dick Manley	5:00 p.m.						
1214	MOSS LANDING								
	Odd Fellow Hall	Chairman:	Thursday						
	17-A East Beach	Harold Walker	5:00 p.m.	6	10	10	7	5	9
	Watsonville								
1215	SAN LUIS OBISPO								
	Motel Inn	Chairman:	Wednesday						
	2223 Monterey St.	R. Hernandez	7:00 p.m.	12	16	16	13	11	15
1216	SANTA MARIA								
	Vanderberg Inn	Chairman:	Thursday						
	1316 So. Broadway	Donald Woods	8:00 p.m.	13	17	17	14	12	16
1217	PASO ROBLES								
	Paso Robles Inn	Chairman:	Tuesday						
	11 & Spring St.	T. Tweedie	7:00 p.m.	11	15	15	12	10	14
1219	HOLLISTER								
	Paine's Restaurant	Chairman:	Wednesday						
	421 East	J. Johnson	5:00 p.m.	5	9	9	6	4	8
1220	DIABLO CANYON								
	San Luis Bay Inn	Chairman:	Monday						
	Avila Beach	R. Brodnick	5:00 p.m.	10	14	14	11	9	13
Pipe Line				Jan.	Feb.	Mar.	Apr.	May	June
1311	BARSTOW								
	V.F.W. Club Rm.	Chairman:	Wednesday						
	25214 W. Main St.	Vern Cooke	5:00 p.m.	5	2	2	6	4	1
Santa Clara				Jan.	Feb.	Mar.	Apr.	May	June
1411	CITY OF SANTA CLARA								
	Fiorillo's Pizza	Chairman:	Thursday						
	2230 El Camino	R. Blankenship	5:30 p.m.	13	10	10	14	12	9
San Jose				Jan.	Feb.	Mar.	Apr.	May	June
1501	SAN JOSE								
	Clover Hall	Chairman:	Tuesday						
	99 N. Bascom	D. Amarelo	6:30 p.m.	11	8	8	12	10	14
1511	SAN JOSE								
	Clover Hall	Chairman:	Tuesday						
	99 N. Bascom	R. Fitzpatrick	8:00 p.m.	4	1	1	5	3	7
1512	BELMONT								
	Windy City Pizza	Chairman:	Wednesday						
	1030 El Camino	Robert Barre	5:15 p.m.	12	9	9	13	11	8

1513	SANTA CRUZ								
	Arion Hall	Chairman:	Tuesday						
	230 Plymouth St.	Don Skinner	8:00 p.m.	11	8	8	12	10	14
1515	GILROY								
	**Watsonville Fed.	Chairman:	Thursday						
	Savings 801 I St.	Clark Dotson	7:00 p.m.	6	3	3	7	5	2
4411	DAVEY TREE-LAS VEGAS								
	Shakey's Pizza	Chairman:	*Thursday						
	4245 E. Boulder Hwy.	R. Freeman	7:00 p.m.	6	3	3	7	5	2
4412	DAVEY TREE-SAN JOSE								
	Clover Hall	Chairman:	Tuesday						
	99 N. Bascom	Don Firth	7:00 p.m.	18	15	15	19	17	21
4414	DAVEY TREE								
	3063 Citrus Cir.	Chairman:	Thursday						
	Walnut Creek	HarryNewcomb	5:00 p.m.	20	17	17	21	19	16
City of Oakland				Jan.	Feb.	Mar.	Apr.	May	June
2211	OAKLAND GENERAL								
	Edgewater-Hyatt House	Chairman:	Thursday						
	455 Hegenberger Rd.	Ralph Murphy	5:00 p.m.	13	10	10	14	12	9
East Bay				Jan.	Feb.	Mar.	Apr.	May	June
2311	OAKLAND								
	Edgewater-Hyatt House	Chairman:	Tuesday						
	455 Hegenberger Rd.	Bob Rochel	7:00 p.m.	4	1	1	5	3	7
2312	EAST BAY GENERAL CONSTRUCTION								
	Edgewater-Hyatt House	Chairman:	Tuesday						
	455 Hegenberger Rd.	A. Washington	6:00 p.m.	5	2	2	6	4	1
†2314	HAYWARD								
	Whiskey Town	Chairman:	Thursday						
	5660 Thornton Ave.	Tim Healy	7:00 p.m.	5	9	9	13	11	8
	Newark								
2315	LIVERMORE								
	Eagles Hall	Chairman:	Thursday						
	527 N. Livermore Ave.	Gary Asbe	7:00 p.m.	6	3	3	7	5	2
2316	CONCORD I.B.E.W. Local 1245								
	3063 Citrus Cir.	Chairman:	Thursday						
	Walnut Creek	Dick Hoyer	7:30 p.m.	13	10	10	14	12	9
2317	ANTIOCH								
	Fiberboard Club	Chairman:	Tuesday						
	2nd & L Street	Tony Hessler	7:00 p.m.	11	8	8	12	10	14
2301	EAST BAY CLERICAL								
	Holiday Inn	Chairman:	Wednesday						
	1800 Powell St.	C. Saunders	6:00 p.m.	12	9	9	13	11	8
	Emeryville								
San Francisco				Jan.	Feb.	Mar.	Apr.	May	June
2401	SAN FRANCISCO CLERICAL								
	Sheraton Palace Hotel	Chairman:	Wednesday						
	Market & New	E. Vallejo	5:30 p.m.	12	9	9	13	11	8
	Montgomery								
2412	SAN FRANCISCO								
	War Memorial Center	Chairman:	Wednesday						
	6655 Mission St.	S. Lee	7:30 p.m.	5	2	2	6	4	1
	Daly City								
Stockton				Jan.	Feb.	Mar.	Apr.	May	June
2511	STOCKTON								
	Freeport Plaza	Chairman:	Thursday						
	2707 East Fremont	Paul Gomez	7:30 p.m.	13	10	10	14	12	9
2512	ANGELS CAMP								
	Veterans Hall	Chairman:	Thursday						
	Main Street	Harold Foley	5:00 p.m.	6	3	3	7	5	2
2513	JACKSON								
	Native Sons Hall	Chairman:	Tuesday						
	Court Street	D. Armstrong	7:30 p.m.	4	1	1	5	3	7
2514	TRACY								
	Norms Pizza Parlor	Chairman:	Wednesday						
	2227 Tracy Blvd.	William Miller	5:00 p.m.	12	9	9	13	11	8
2515	MODESTO								
	Sundial Lodge	Chairman:	Wednesday						
	808 McHenry, Rm. #138	Litha Saunders	7:30 p.m.	12	9	9	13	11	8
††2516	LODI								
	Carpenters Hall	Chairman:	Wednesday						
	Local 1418	Gary Mai	7:30 p.m.	5	2	2	6	4	1
	15417 N. Lower Sac. Rd.								
2517	SONORA								
	Elks Lodge	Chairman:	Thursday						
		J. Robinson	7:30 p.m.	20	17	17	21	19	16
2518	MODESTO IRRIGATION DISTRICT								
	Sundial Lodge	Chairman:	Tuesday						
	808 McHenry, Rm. #138	David Pittman	7:30 p.m.	11	8	8	12	10	14
Pacific Gas Transmission				Jan.	Feb.	Mar.	Apr.	May	June
††3021	SANDPOINT								
		Chairman:	Wednesday						
		W. Miller	5:00 p.m.	26	23	23	27	25	22

UNIT MEETINGS

PLAN TO ATTEND

				Jan.	Feb.	Mar.	Apr.	May	June
3023	WALLA WALLA Touchet Fire Station	Chairman: Larry Thomas	Wednesday 7:00 p.m.	12	9	9	13	11	8
3024	REDMOND Grizzly Bear Pizza 413 W. Glacier St.	Chairman: Odie Walters	Thursday 7:00 p.m.	13	10	10	14	12	9
Humboldt									
3111	EUREKA Labor Temple 9th & E Streets	Chairman: Barry Jensen	Tuesday 7:30 p.m.	11	8	8	12	10	14
3112	GARBERVILLE Fireman's Hall Locust Street	Chairman: Allen Weber	Thursday 5:00 p.m.	13	10	10	14	12	16
3113	WILLOW CREEK Willow Inn Hwy. 299 East	Chairman: C. Fleming	Thursday 5:00 p.m.	20	17	17	21	19	23
Shasta									
3212	REDDING Hospitality House 532 N. Market	Chairman: Rex Vaughn	Tuesday 7:30 p.m.	4	1	1	5	3	7
3213	BURNEY Veterans Memorial Hall	Chairman: Will Rodriguez	Thursday 7:30 p.m.	13	10	10	14	12	16
3216	TRINITY New York Hotel Weaverville	Chairman: A. W. Wells	Tuesday 7:30 p.m.	11	8	8	12	10	14
Nevada									
3311	RENO IBEW Hall 2713 E. 4th St.	Chairman: Don Moler	Tuesday 7:30 p.m.	5	2	2	6	4	1
3312	CARSON CITY Carson Fire Station	Chairman: Darrel Plank	Monday 6:00 p.m.	10	14	14	11	9	13
3313	YERRINGTON Catholic Center	Chairman: Edward Alf	Tuesday 6:30 p.m.	4	1	1	5	2	7
3314	SOUTH LAKE TAHOE Moose Lodge	Chairman: Ralph Kostka	Thursday 6:30 p.m.	6	3	3	7	5	2
3315	ELY Mt. Wheeler Fire Dept. Mtg. Hall	Chairman: Don Strausburg	Tuesday 4:15 p.m.	18	15	15	19	17	14
3316	RENO MANUFACTURING Carpenter's Hall 1150 Terminal Way	Chairman: Janice Davis	Thursday 4:45 p.m.	13	10	10	14	12	9
3317	WINNEMUCCA Nixon Hall	Chairman: Mike Roper	Tuesday 7:00 p.m.	11	8	8	12	10	14
3318	ELKO Stockmen's Hotel Elko	Chairman: M. Dykstra	Wednesday 7:30 p.m.	19	16	16	20	18	15
DeSaba									
3411	CHICO Retail Clerks' Hall 1st & Sheridan	Chairman: Tom Conwell	Tuesday 7:30 p.m.	18	15	15	19	17	21
3412	QUINCY Moons Restaurant Lawrence St. Stone Building	Chairman: Al Harte	Wednesday 7:00 p.m.	5	2	2	6	4	8
3417	PARADISE Forbes Garage 5570 Vista Way	Chairman: A. Gonsalves	Thursday 7:30 p.m.	6	3	3	7	5	9
Drum									
3511	AUBURN Moose Lodge Sacramento & High	Chairman: Ted Smith	Tuesday 7:00 p.m.	11	15	15	12	10	14
3512	ROSEVILLE Zorros Pizza Parlor Roseville	Chairman: George Fritz	Monday 5:00 p.m.	3	7	7	4	9	6
3513	GRASS VALLEY Nevada County Sportsman Banner Mtn. Trail	Chairman: Willis Webber	Tuesday 7:30 p.m.	4	8	8	5	10	7
Colgate									
3611	MARYSVILLE Petrocelli's 1235 Bridge St. Yuba City	Chairman: Jack Osburn	Tuesday 6:00 p.m.	4	1	1	5	3	7
3613	OROVILLE Eagles Hall 2010 Montgomery St.	Chairman: Al Knudsen	Thursday * 6:00 p.m.	6	3	3	7	5	2

North Bay				Jan.	Feb.	Mar.	Apr.	May	June
3711	MARIN COUNTY Sams, 209 Third St. San Rafael	Chairman: R. Madden	Thursday 5:30 p.m.	13	10	10	14	12	9
3712	SANTA ROSA El Rancho Tropicano	Chairman: Howard Steifer	Tuesday 8:00 p.m.	4	1	1	5	3	7
3714	UKIAH Ukiah Grange South State St.	Chairman: D. Bettencourt	Wednesday 7:30 p.m.	5	2	2	6	4	8
3715	LAKEPORT Bank of Lake County Main St., Lakeport	Chairman: John Gibbs	Tuesday 8:00 p.m.	4	1	1	5	3	7
3717	FORT BRAGG — PT. ARENA Masonic Temple N. McPherson St. Ft. Bragg	Chairman: D.C. McDonnell	Thursday 5:00 p.m.	6	3	3	7	5	9
Sacramento									
3811	SACRAMENTO Local Union Office 1414 21st St.	Chairman: D. Norris	Tuesday 6:00 p.m.	4	1	1	5	3	7
3812	VACAVILLE Brigadoon Lodge 1571 E. Monte Vista	Chairman: J. Runswick	Thursday 7:00 p.m.	13	10	10	14	12	9
3813	PLACERVILLE **Spanky's Pizza 197 Placerville Dr.	Chairman: G. Park	Wednesday 5:00 p.m.	12	9	9	13	11	8
3814	WOODLAND American Legion Hall Post 77 523 Bush Street	Chairman: J. Rutledge	Thursday 5:30 p.m.	6	3	3	7	5	2
3011	SACRAMENTO REGIONAL TRANSIT IBEW Office 1414 21st Street	Chairman: Wes Duval	Wednesday 4:30 p.m.	5	9	9	6	11	8
3911	SACRAMENTO MUNICIPAL UTILITY DISTRICT Dante Club 2330 Fair Oaks Bl. Sacramento	Chairman: Dan Powell	Wednesday 4:30 p.m.	5	2	2	6	4	1
3912	FRESH POND (SMUD) Moose Lodge Hwy. 50-Frontage Road, Camino	Chairman: Russ Landino	Tuesday 4:15 p.m.	4	1	1	5	3	7
3913	RANCHO SECO Community Center Herald Store Herald, Ca.	Chairman: Mack Wilson	Tuesday 4:15 p.m.	11	8	8	12	10	14
Citizens Utilities Company									
4012	SUSANVILLE Grand Cafe Main Street	Chairman: Richard Carr	Tuesday 7:30 p.m.	11	8	8	12	10	14
4013	ALTURAS Rancho Steak House Hwy. 299E	Chairman: E. Seminario	Wednesday *5:30 p.m.	12	9	9	13	11	15
4014	ELK GROVE Pizza Barn 8610 Elk Grove Blvd.	Chairman: Dave Morrison	Wednesday 5:30 p.m.	19	16	16	20	18	15
4015	BURNEY - C.U.C.C. Sams Pizza Hwy. 299E	Chairman: David Monath	Thursday 5:30 p.m.	13	10	10	14	12	16
Outside Construction									
4911	OUTSIDE CONSTRUCTION 1414 21st Street Suite B Sacramento	Chairman: Ray Sparks	Saturday 10:00 a.m.	8	12	12	9	14	11
4912	OUTSIDE LINE 170 W. San Jose Basement	Chairman: C. Peterson	Wednesday 8:00 p.m.	12	9	9	13	11	8

*Time Change
**Meeting Place Changed
***Meeting Day Changed

†New Unit
††Unit reestablished

General Construction	Public Agencies	Trees
2312 under East Bay	1411 City of Santa Clara 2211 City of Oakland 3911 S.M.U.D. 3912 Fresh Pond (S.M.U.D.)	4411 under San Jose

OUTSIDE LINE

SOUTHERN CALIFORNIA

At a Unit Meeting with Outside Construction

Among those attending a recent Outside Line Unit 4912 meeting in Southern California were:

Jess Barnett

Ted Briggs

Kenny Bruce

L. D. Burks

William Catalfo

Bobby J. Cobb

Robert Cozart

George R. Dickinson

Tube Dudley

Hoyt Elmore

Fred R. Ewell, Jr.

Clive Hogg

M. S. King

Rick McKinney

Ron Pendergrass

L. Peterson

Bill Robertson

D. Scott

Chuck Sherlock

Hugh Torres

and Business Representatives Will Thomas and Jerry Robinson.

Unit Chairman Curt Peterson reports that attendance was light due to members involved in extensive storm repair work the night of the meeting.

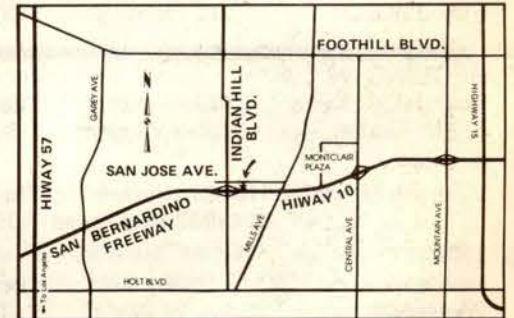
Other Unit officers recently elected include Lymon Morrison, Vice Chairman, and Bill Turner, Recording Secretary. Elected to the Unit's Executive Committee were Danny Scott and Ron Pendergrass.



Dispatch office at 170 W. San Jose, Claremont near Indian Hill exit off Hwy. 10.



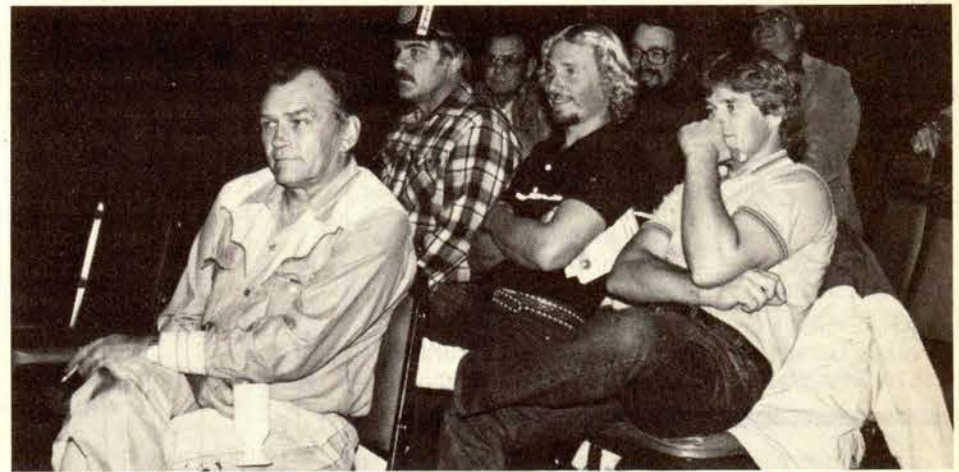
Office secretary Julie O'Connor.



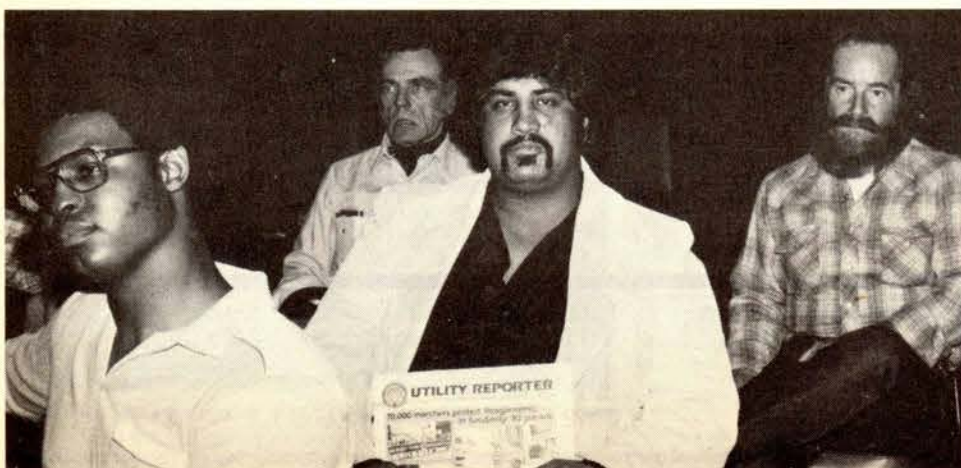
Unit Chairman, Curt Peterson, second from right, meets with Executive Committee members, l-r, Ron Pendergrass and Dan Scott, and Business Representative Will Thomas.



Front row seats.



Members attend recent unit meeting.



In the field

Outside Construction line crew pictured here is working on reconductoring approximately 1100 feet of 12 Kv and 4 Kv line in Southern California.

First the crew meets where the contractor's trucks are stored,

then heads out about 15 miles to the job site where work begins. Heading up the 7-person crew is Foreman Steve King, who's been an IBEW member going on 25 years. Contractor on this job is Grissom & Johnson.



Lineman Ed Simons helps ready truck.



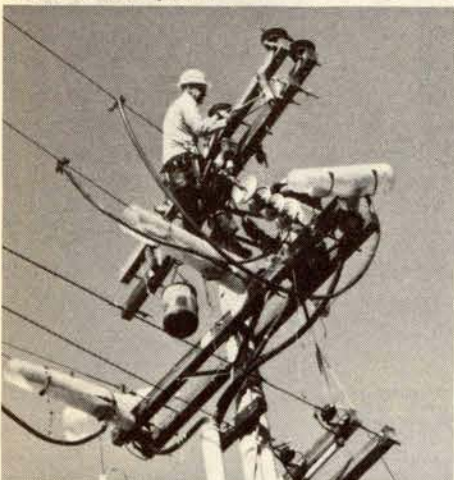
In field, Simons squares cross arms.



Simons and 7th step Apprentice Bob Cozart climb pole.



IBEW Shop Steward, Lineman Jesse Barnett.



Lineman Ted Olson, and Barnett at work on pole top.



4th step Apprentice, Steve Marshall works as Groundman.



On lunch break, l-r, Cozart, Crew Foreman Steve King, Lineman Frank Kaatmann with Grissom & Johnson General Foreman, Jerry Litteral.

LETTERS OF AGREEMENT

- 82-1 Return from LTD, and placement of System Operator, Stockton Division, Physical.
- 82-2 Cancelled.
- 82-3 Adjust wages for Crane Operator, General Construction.
- 82-4 Six month, bidding and transfer bar VP&C, Clerical.
- 82-5 Vacation adjustment, Electric T&D San Francisco, Physical.
- 82-6 Change of work hours Gas Service Department, North Bay Division, Physical.
- 82-7 Establishment of Flextime Meter Repair facility, (GO) Physical.
- 82-8 Change of work hours VP&C, Clerical.
- 82-9 Change of work week, (10 and 4) General Construction Paint Group, Physical.
- 82-10 Change of work hours G. C. Gas, Physical.
- 82-11 Cancelled.
- 82-12 Establishment, McDonald Island only, of 0057 PLO, Physical.
- 82-13 Establishment of minimum information data to be placed or pre-bid transfer and post bid forms to avoid computer rejection. System-wide.
- 82-14 Cancelled.
- 82-15 Recision of LOA, June 16, 1975 distribution of overtime De Sabla Division, Physical.
- 82-16 Pending.
- 82-17 Rental Agreement Company owned housing, System-wide.
- 82-18 Change of work hours Operating Clerical, North Bay Division.
- 82-19 Labor Agreement clarification Sections 208.23 and 308.15, System-wide, Physical.
- 82-20 Establishment of top rate of pay for two Roving Operators, (Balch Camp), San Joaquin Division, Physical.
- 82-21 Cancelled.
- 82-22 Pending.
- 82-23 Temporary (1-year) expansion of Service Meterman's duties, System-wide, Physical.
- 82-24 Reclassification of six Auxiliary Operators to Assistant Power Plant Operators, Kern Power Plant, San Joaquin Division, Physical.
- 82-25 Change of work hours Electric Meter Department, San Joaquin Division, Physical.
- 82-26 Rehabilitation placement into Operator in Training, Sacramento Division, Physical.
- 82-27 Rehabilitation placement into Service Operator position, East Bay Division, Physical.
- 82-28 Cancelled.

Pacific Gas and Electric Company 1983

Shift, Relief, and Nuclear Premiums

To determine your shift and relief premiums multiply 4.5% by the 1982 hourly weighted average for the second shift and multiply by 9% for the third

shift. Computation for arriving at the hourly weighted wage rate is indicated below along with steps for figuring premiums.

December 31, 1982 Hourly Weighted Average	=	\$ 12.64
7% of above	+	.884
1983 Hourly Weighted Average	=	\$ 13.524

SECOND SHIFT PREMIUM - \$.61

$$\begin{aligned} \$13.524 \times 4.5\% &= \$.608 \\ \text{Rounded} &= \$.61 \end{aligned}$$

THIRD SHIFT & SUNDAY PREMIUMS - 1.22

$$\begin{aligned} \$13.524 \times 9\% &= \$1.217 \\ \text{Rounded} &= \$1.22 \end{aligned}$$

$$\begin{aligned} \text{RELIEF PREMIUM} &= \$14.76 \\ 8 \times \$1.22 &= \$9.76 + \$5 = \$14.76 \end{aligned}$$

NUCLEAR PREMIUMS

To determine your nuclear premium, multiply the third shift premium (1.22) by 1.1, 1.6 or 2, depending on your license.

NUCLEAR PREMIUMS

Nuclear Auxiliary Operator Premium (Third Shift Premium 1.22 x 1.1)	\$1.34
Reactor Operator License Premium (Third Shift Premium 1.22 x 1.6)	\$1.95
Senior Reactor Operator License Premium (Third Shift Premium 1.22 x 2.0)	\$2.44

Members repair gas leak in downtown San Francisco

Next Advisory Council Meeting

Saturday, Sunday

Feb. 5, 6, 1983

at the

Sheraton Inn

Concord

Meetings begin at 9 a.m.

Ann Miley, new attorney on staff

Meet Ann Miley, new staff attorney at IBEW Local 1245.

She comes from the Department of Industrial Relations, Division of Labor Standards Enforcement, State of California where she worked as a trial attorney for enforcement of the labor code, including Industrial Commission Orders, for the past four years.

Her work with the Labor Commissioner's office included protecting employees who were discriminated against for refusing to work under unsafe working conditions, and to gain general enforcement of workers' rights for employees not protected by collective bargaining agreements.

After her appointment to Local 1245 by Business Manager Jack McNally she began working immediately on disciplinary hearings,



arbitrations and on health and safety agency issues with OSHA.

Miley is originally from Boston, Mass., and earned her law degree at the University of Santa Clara Law School.

She has extensive legal experience, having worked in a law collective specializing in criminal, domestic and employment law. She also worked with the San Mateo Legal Services in the East Palo Alto Upgrade project, which attempted to upgrade the many undesirable discharges given Vietnam Veterans.

Work with labor unions has included legal services for Retail Clerks Union, Local 428 in San Jose, in affiliation with Garry, Dreyfus, McTernan and Brotsky.

Local 1245 members to the rescue . . . a team of experienced Gas Department members at PG&E recently responded quickly to repair a leak in downtown San Francisco, on January 5, at the site of previous leak in 1981.

The 10-inch leak in a 16-inch pipe was quickly repaired with some 40 customers without gas for about six hours. Gas Servicemen worked throughout the afternoon to restore service to customers after the repair work was com-



Site of leak, Battery and Sacramento Sts., downtown San Francisco.

pleted. Among those Servicemen was Larry Barni, bottom row, far right, who carries on an IBEW

1245 tradition, following in the footsteps of his father who's been a member for 30 years.



Preparing to make initial repairs.



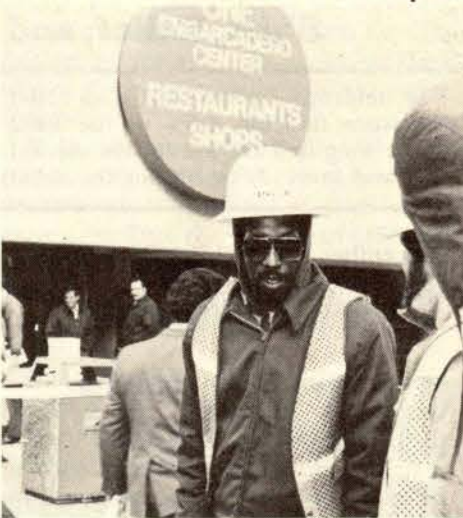
Photos: Carol Bedsole



Soap testing the weld.



Repaired pipe.



Members in leak repair crew.



Gas Servicemen prepare to restore service to customers.

