



Labor Represented in Coalition for Better Minimum Wage

The AFL-CIO has joined a broad-based national coalition that will lead a campaign for decent increases in the minimum wage, to help America's lowest-paid workers get out of poverty and off the welfare rolls.

AFL-CIO President George Meany has joined Clarence Mitchell, chairman of the Leadership Conference on Civil Rights; the Rev. Theodore M. Hesburgh, C.S.C., president of Notre Dame University and Mrs. Dorothy Height, president of the National Council of Negro Women, in issuing a call-to-action message to some 200 major organizations which have shown a concern for social justice.

The four leaders have condemned the Carter Administration's proposal to increase the minimum wage by 20 cents to \$2.50 an hour, and to peg it to 50 percent of the average straight-time manufacturing wage in the future. The proposal is "simply inadequate and unfair," they said.

"It does nothing to relieve the present plight of these workers and locks them into a poverty wage for the future," the coalition leaders added. "Many full-time minimum-wage workers will still have to seek supplemental welfare assistance in order to have any standard of decency."

Meany has earlier called the Carter proposal "shameful."

In their message to officials of other organizations, the coalition leaders asked them to join a campaign "for a minimum wage that will provide a decent living, free of welfare reliance, for men and women workers and will give them the buying power essential to their and the nation's economic recovery."

Assembly Bill 1931 Is Bad Legislation

Assemblyman Bill McVittie has introduced legislation which would severely restrict public agencies in the use of their own employees in the repair, alteration, addition, improvement, or maintenance, as well as the construction, erection, or demolition of any publicly owned property or publicly operated facility.

The proposals are contained in Assembly Bill 1931, which is sponsored by the Construction Industry Force Account Council, and was introduced by Assemblyman McVittie on May 10, 1977, and has been referred to the Assembly Committee on Governmental Organizations.

AB-1931 separates public agencies into eight specific categories, sets specific dollar limits on their in-house construction activities, and establishes criteria for putting the work out to bid after the dollar limits have been determined.

The dollar limits covering construction work by public agencies are broken down into two categories:

1. "New work", or that which involves construction, erection, or demolition of any publicly owned property or publicly operated facility; and
2. "Subsequent work", or follow-up work on the original project which involves repairs, alterations, additions, improvements, or maintenance to the original construction project when it is required.

The limits are as follows:

Government Entity	New Work Limit	Subsequent Work Limit
Counties	\$15,000	\$5,000
Cities	\$10,000	\$5,000
Schools	\$ 5,000	\$3,500
	or 300 hours of labor	or 100 hours of labor
State Agencies	\$15,000	\$5,000
State Colleges	\$10,000	\$5,000
University of Calif.	\$10,000	\$5,000
Special Districts	\$ 5,000	\$3,500
Public Utilities	\$ 7,500	\$3,500

The measure further provides that the costs of labor, supplies, materials, and equipment for the project, as well as the costs of plans, specifications, and advertising, be included in determining the amount of the construction project.

Local Union 1245 has successfully opposed similar legislation in the past and does oppose AB 1931. However, the current effort to pass this legislation is well financed and it will take a strong effort and the support of all concerned to defeat it. Local Union 1245 members should contact their own Assemblyman and State Senator, as well as members of the Assembly Committee on Governmental Organizations to express their opposition to AB 1931. Committee members are: Chairman - Frank Vicencia, Richard Alatorre, Larry Chimbole, Robert C. Cline, Mike Cullen, Leroy F. Greene, Richard Lehman, Kenneth L. Maddy, and Stan Statham.

Letters should be addressed to the individual legislator at the State Capitol, Sacramento, Ca. 95814.

Local Union Elections for Officers and Advisory Council Members to be held in June

For listing of candidates, see page 2

Local Union 1245's Officers and Advisory Council Members are to be elected by the Local Union membership next month.

On May 31, 1977, the Judge of the Election will have ballots mailed to every member of Local Union 1245 qualified to vote in accordance with Article III, Section 14 of the Local Union Bylaws. These ballots must be marked and mailed back to the Election Committee in accordance with the instructions contained in the ballot. Only those ballots received in Post Office Box 5008, Walnut Creek, CA by 10:00 a.m. on June 16, 1977 will be counted.

Any member who does not receive a ballot by June 4th, may request a ballot by telephoning the Local Union Headquarters (415) 933-6060, or by addressing the Judge of the Election, P.O. Box 4790, Walnut Creek, CA 94596 or by appearing in person at the office of Local Union 1245, 3063 Citrus Circle, Walnut Creek, CA.

Each qualified member is entitled to only one vote and if due to mail delay or other circumstances a member receives more than one ballot only one such ballot shall be marked and returned. All other such ballots should be destroyed.

The candidates and a factual record of their Local Union experience, as defined in Article III, Section 15 of the Local Union Bylaws, are listed starting on page 2 of this issue of the **Utility Reporter**.

In accordance with Article IX Section 3 of the Local Union Bylaws the Business Manager-Financial Secretary and the President, by virtue of their offices, shall serve as delegates to the International Convention of the IBEW.

Your Election Committee, in calling upon every member of Local Union 1245 to cast a ballot, is urging participation in this most important part of membership responsibilities.

North Coast Comments

by Darrel Mitchell

On April 2, members from Humboldt Division attended the second shop steward training session of the year. Assistant Business Manager Jack McNally made a presentation regarding pension plans and ERISA. Business Manager L. L. Mitchell followed with a discussion dealing with the history and structure of our local. Members in attendance were Ken Haycraft, Jim Russell, Butch Parton, Bob Hixson, Jess Dunlap, Ken Cunningham, Ted Bare, Chuck Stockham and John Grant.

Local 1245 extends a welcome to the following new members, Mary Johnson in Ukiah District of North Bay, John Paul, Ken Williams, Tom Cloninger and Casey Mares in Humboldt Division.

Shop Stewards Ken Haycraft, Jim Findlay, John Trunnel, Joe Pence, George Hearst, Rich McKenna, Ron Goldsmith, Stan Fahnholz, Jerry Hamilton, Butch Parton, Dennis Swensen and Gene Wallace have very ably represented their fellow members in recent grievance proceedings. Gene Wallace has recently been transferred from the Eureka area. While at Humboldt Power Plant Gene has done an exceptional job representing our G.C. members.

Jack Lemos and Ed Austin have recently been appointed shop stewards in the Fort Bragg area. In Humboldt Division Ted Bare, Chuck Stockham, Allen Weber, Dave Furtado and Barney Curtis have been appointed shop stewards.

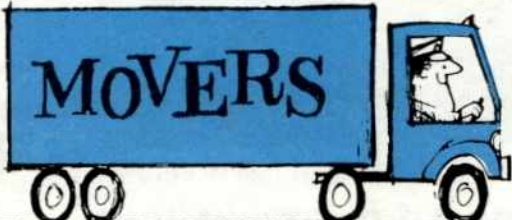
Harry Manfredi, Ed Giannini, Garry Sullivan, Joe Pence, Dan Gayaski, Gene Porter and Chuck Mangin have been off work due to illness. We hope for speedy recoveries for these members.



The photos above and below show some of the stewards who attended the Humboldt Area Shop Stewards training program.



... HAVE YOU MOVED?



MY NEW ADDRESS IS:

NAME _____

STREET _____

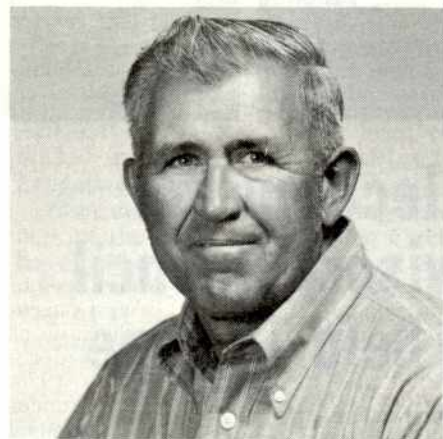
CITY _____ STATE _____ ZIP _____

SOCIAL SECURITY # _____

RETURN TO:
 P.O. BOX 4790, WALNUT CREEK, CALIF. 94596

Candidates for Office List Backgrounds

PRESIDENT (Delegate to International Convention)



THOMAS C. CONWELL, JR.

THOMAS C. CONWELL, JR.

Initiated by Local Union 1245 on September 1, 1964; is a member of Unit 3411 - Chico; is employed by PG&E as a Lineman in Chico. Was the Executive Board, Northern Area, member from 1971 to 1974, a member of the Executive Committee of Unit 3411, from 1967 to 1969, Unit Chairman from 1969 to 1971, a Shop Steward in General Construction from 1964 to 1969 and in De Sabla Division from 1969 to present. Has served as a member of the Joint Grievance Committee for both G. C. and De Sabla; as a member of the Local Union Election Committee, PG&E Ratification Ballot Committee, Local Union Political Education Committee, Policy and Resolution Committee, Safety Committee, Bylaws Committee and as Chairman of the Communications Committee. Was a delegate to I.B.E.W. International Convention in 1974, Nevada State Federation of Labor Convention 1971, Nevada State Association of Electrical Workers Conference 1971, Northern California Joint Executive Board Conference, I.B.E.W. 1971 and 1972, California State Federation AFL-CIO Convention 1972; California State Association of Electrical Workers Conference 1972; LAMPAC Meeting 1973; IBEW Utility Conferences in 1973 and 1974, California Labor COPE Conference 1974; IBEW 9th District Progress Meeting 1974; California Labor Federation Legislative Conference 1974. Attended the Konocti Conference of 1969, Claremont Conference of 1971, and Shop Steward Conferences in General Construction and De Sabla Division.



HOWARD DARINGTON.

HOWARD DARINGTON

Initiated by Local Union 1245 on October 1, 1951; is a member of Unit 3111 - Eureka; is employed by PG&E as a Control Technician at Humboldt Bay Power Plant. He is the Local Union President and Chairman of the Local Union Executive Board, having served since 1974. Served as Advisory Council member from Humboldt Division during the periods of 1965-71 and 1972-74; and is currently the Chairman of

President (Delegate to International Convention) (cont'd)

the Advisory Council, having held this position since 1974. He was Vice Chairman of Unit 1214 - Watsonville/Moss Landing in 1957 to 1959, Chairman 1959-61, and Recorder 1961-62. He was Vice Chairman of Unit 3111 - Eureka in 1962-63, Recorder 1965-67 and 1971-74, Chairman 1963-65 and 1974 to present. Was a Shop Steward in Coast Valleys Division from 1959 to 1962 and in Humboldt Division from 1962 to 1974. Served on PG&E Joint Grievance Committees as a member and Union Chairman of Coast Valleys (1960-62) and Humboldt (1963-74) Divisions. Member of PG&E Steam Advisory and Steam Departmental Negotiating Committee. Member of PG&E General Negotiating Committee since 1966, Chairman in 1969-70 and 1972, ex officio member since 1974. Member 1968 and 1974 PG&E Pension and Benefit Negotiating Committee, Chairman in 1968. Member 1970 PG&E Contract Language Revision Committee. Member and Chairman of Local Union Building Committee 1975-76 and Administrative Committee since 1974; member of Local Union Employee Wage and Benefit Committee since 1975. Active ex officio member of L.U. Ways & Means Committee, Communication Committee and Political Education Committee since 1974. Member of PG&E Health and Safety Committee and PG&E Joint Labor-Management Committee since 1974. Attended Local Union Conferences 1958-1960; Shop Steward Conferences 1961; Clerical Conference 1967 & 1975; Konocti Seminar 1969, Unit Officer Conference 1974; delegate on behalf of L.U. 1245 to COPE Workshop Conference, Eureka 1965, and to the Health Conference, Eureka 1968. Member of committee to evaluate nuclear job problems at Humboldt Bay Power Plant 1968-69. Speaker on behalf of L.U. 1245 at the "Conference on Alternatives to Corporate Control" 1975.

Member of the Board of Directors & President of I.B.E.W. Local Union 1245 Energy Worker's Center, Inc. since 1974.

Member and Chairman of L.U. 1245's delegation to the I.B.E.W. International Convention 1974; I.B.E.W. Utility Conference 1975 & 1976; I.B.E.W. 9th District Progress Meeting 1974, 1975, and 1976; Inter-Union Gas Conference 1975, 1976 and 1977; California State Federation of Labor, AFL-CIO Convention 1976; California State Federation of Labor, AFL-CIO Joint Legislative Conference 1975 and 1976; California State Electrical Association 1975 and 1976; Joint Executive Conference of Northern California Electrical Workers 1975 & 1976; California State Federation of Labor, AFL-CIO Conference "Women in the Workforce" 1976 & 1977; Labor and Management Public Affairs Committee (LAMPAC) 1974, 1975 and 1976; California COPE Convention 1976.

E. M. "BUFFALO" HORN

Initiated by Local Union 1245 on April 1, 1955.

LELAND "LEE" THOMAS

Initiated by Local Union 1324 on May 29, 1950; is a member of Unit 3212 - Redding; is employed by PG&E as a Line Sub-Foreman in Redding. Was Local Union President 1962-1967 and in 1974; Vice President 1974; and a member of the Executive Board, Southern Area, 1962. Was Chairman of Unit 1511 from 1953-55; Vice Chairman 1955-60; Vice Chairman of Unit 3212 in 1977. Advisory Council member San Jose Division and member San Jose Joint Grievance Committee 1953-55. Member of Unit Safety Committee and Ways & Means Committee; Shop Steward in San Jose Division; member of Local Union Job Protection Committee 1959; Overhead Underground Committee 1962; member of Local Union Safety Advisory Committee; Chairman of Local Union Safety Committee; member of California State Electrical

President (Delegate to International Convention) (cont'd)



LELAND "LEE" THOMAS

Association Apprenticeship Committee; member of Local Union Master Apprenticeship Committee. Delegate to IBEW International Constitutional Convention in 1966, 1960, 1974. California Conference on Underground Systems 1968; Governor's Traffic Safety Conference 1968; Governor's Industrial Safety Conference 1968; delegate to California Federation of Labor, AFL-CIO Convention in 1962, 1964, 1966; National AFL-CIO Convention in 1963 and 1965. International Labor Press Association Convention in 1963. Appeared as expert witness on behalf of L.U. 1245 before the California Public Utility Commission opposing vertical construction of distribution voltage systems on PG&E properties. Was a guest speaker representing L.U. 1245 at University of Stanford in 1963 and 1964 (Sloan Foundation), and has been delegate to several O.S.H.A. Conferences. Attended the California AFL-CIO Summer School at University of California at Berkeley 1967; completed the 150 hour Hurley Management and Industrial Program; participated in L.U. Leadership Seminar at Konocti; co-chaired the 1969 United Fund appeal in San Jose Division on behalf of L.U. 1245 (Joint PG&E and L.U. 1245); attended all L.U. conferences 1958-74, as well as a number of Shop Steward Conferences within L.U. 1245's jurisdiction. Resigned as L.U. President in July of 1967 to accept position as Business Representative in the area of Safety and Training, and served in that capacity until 1968. Has twice represented L.U. 1245 as delegate to Council on Religion and International Affairs Conference. Took Leave of Absence in 1969 to accept position as Business Representative in Shasta and De Sabla Divisions of PG&E, Citizens Utilities Company of California and Pacific Tree Expert Company. Attended Inter-Union Gas Conference in 1973; represented L.U. 1245 in several LAMPAC Conferences. Is currently Advisory Councilman representing Shasta Division of PG&E; delegate to the Five Counties' Central Labor Council; and Vice Chairman of Redding Unit 3212. Labor representative to the Shasta County Community Action Agency representing the Five Counties' Labor Council.

VICE PRESIDENT



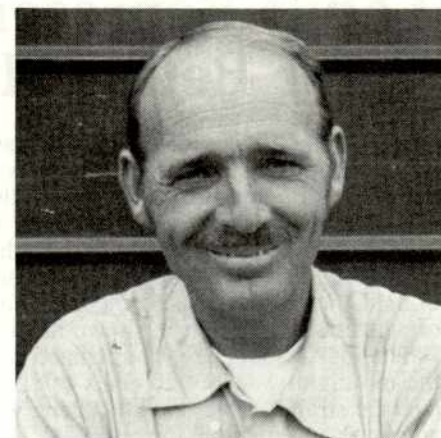
RONALD G. FITZSIMMONS

RONALD G. FITZSIMMONS

Initiated by Local Union 1245 on August 1, 1969; is a member of Unit 2412 - San Francisco; is employed by PG&E as a Cable Splicer in San Francisco. Is currently Chairman of Unit 2412, having served since June of 1974; a member of Unit 2412 Executive Committee since 1971. Has been a Shop Steward for San Francisco Electrical T & D Dept. since July 1971 and a Departmental Shop Steward since 1975. Served on Ad Hoc Committee for Cable Subforeman and Cable Splicer 1974 and 1975; Local Investigating Committee member since 1974; member of PG&E Wage Negotiations Committee 1976; member of PG&E General Negotiating Committee 1977; member of

Vice President (cont'd)

San Francisco Division Joint Grievance Committee since 1972; delegate to the San Francisco Central Labor Council. Attended the 1974 Leadership Conference, and has completed two San Francisco-North Bay Division Shop Steward Training Programs.



WILLIAM JACK GRAVES

WILLIAM JACK GRAVES

Initiated by Local Union 1245 on March 1, 1953; is a member of Unit 1215 - San Luis Obispo; is employed by PG&E as a Line Subforeman in San Luis Obispo. Served as Executive Board member, Southern Area, 1971 to 1974; Chairman of Unit 1215 1966 to 1968 and Vice Chairman of Unit 1215 1968 to 1970. He was a Shop Steward in San Joaquin Division from 1959 to 1965 and in Coast Valley Division from 1965 to present. Member of Safety Committee for Unit 1215 1974 to 1977 and Local Union Ways & Means Committee from 1971 to 1974. Served as delegate to California State Association of Electrical Workers Conference; California Labor Federation Convention; I.B.E.W. Utility Conference; LAMPAC Meetings; and Center for Health Studies at Asilomar.



JAMES F. WILBURN

JAMES F. WILBURN.

Initiated by Local Union 1011 in 1955 and deposited Travelling Card in Local Union 1245 on April 1, 1962; is a member of Unit 1111 - Fresno; is employed by PG&E as a Communications Technician in Fresno. Was Executive Board member, Southern Area, from March 1976 to March 1977 and Local Union Vice President from 1976 to present. Vice Chairman of Unit 1111 1969 to 1972; Chairman 1973-74; and Recorder 1974-76. Was Shop Steward from July 1965 to March of 1976; member of PG&E Pension and Benefit Negotiating Committee 1973-74; member and secretary of Local Union Benefit Committee June 1976 to present; member and secretary of Ways & Means Committee June 1976 to present; member of Communications Committee since June 1976; member of Policy and Resolution Committee since June 1976; and is currently Chairman of Political Education Committee. Has been a delegate to Fresno-Madera Central Labor Council since April 1970; delegate to California AFL-CIO Legislative Conference in May, 1976; delegate to California Labor Federation, AFL-CIO Convention in September 1976 and served as a member of the Credentials Committee; delegate to the California State Association Electrical Workers Conferences 1976 and 1977.

RECORDING SECRETARY

MICKEY HARRINGTON

Initiated by Local Union 1245 on March 1, 1960. Is a member of Unit 3815 - Davis. Is employed by PG&E as a Working Foreman B in General Construction in Orangevale. Was Executive Board member-at-large in 1968, and Local Union Recording Secretary from 1971 to 1974; was employed as a Business Representative

the utility reporter

Telephone (415) 933-6060

L. L. MITCHELL KENNETH O. LOHRE M. A. WALTERS JOHN J. WILDER LAWRENCE N. FOSS	Executive Editor Managing Editor Assistant Editor Assistant Editor Assistant Editor
---	---

Executive Board: Howard Darington, Eduardo Vallejo, Kathy Tindall, Warren Manley, James Wilburn, Guy E. Marley and Jack Graves.

Published monthly at 1918 Grove Street, Oakland, California 94612. Official publication of Local Union 1245, International Brotherhood of Electrical Workers, AFL-CIO, P.O. Box 4790, Walnut Creek, Ca. 94596. Second Class postage paid at Oakland, California.

POSTMASTER: Please send Form 3579, Change of Address, and all correspondence to the Utility Reporter, to P.O. Box 4790, Walnut Creek, Calif. 94596.

Subscription price \$1.20 per year Single copies, 10 cents



MICKEY HARRINGTON

from 1968 to 1971. Member of Executive Committee of Unit 3815 from 1966 to 1968; Vice Chairman from 1971 to 1974, and Chairman from 1974 to 1976. Was a Shop Steward from 1962 to 1968, and 1971 to present.

Local Union Committees: Ballot Committee - 1966. General Construction Grievance Committee, 1966 - 1971; G.C. Lines of Progression Committee, 1970 - 1973; Advisor to that Committee, 1973 - 1974. G.C. Equipment Committee, 1970 - 1973; Advisor to that Committee, 1973 to 1974. Member of Local Union Ways and Means Committee, 1968. Local Union Ways and Means Committee Secretary, 1971 - 1972; Chairman of that Committee, 1972 - 1974. Local Union Political Education Committee, 1971 - 1972; Chairman to that Committee, 1972 - 1974. Secretary to the Local Union Policy and Resolution Committee, 1971 - 1974. Secretary to the Local Union Staff Pension Trustee Committee, 1971-1974. Member of the 1966 Election Committee.

Other Activities on Behalf of the Local Union: Delegate to the California Labor Federation Conventions, 1968 and 1972. Nevada State AFL-CIO Convention, 1972. California State Association of Electrical Workers Conference, 1972. I.B.E.W. Utility Conference, 1973. Inter-Union Gas Conference, 1974. Has attended various I.B.E.W. Northern Joint Executive Board Conferences since 1968. Attended the Konocti Conference in 1969, and the Claremont Conference in 1971 and the Concord Conference in 1974. A delegate to the Public Employees Council of California, 1968 and 1972; delegate to the California Labor Council on Political Education, 1968 and 1972; delegate to the 1973 LAMPAC meeting. Represented Local Union 1245 at the Golden Empire Eagle Scout Recognition Dinner. Delegate to the 1974 International Convention.



WILLIAM H. PEITZ

WILLIAM H. PEITZ

Initiated by Local Union 1245 on July 1, 1949; is a member of Unit 2514 - Tracy; is employed by U.S.B.R. as a Communication & Instrumentation Mechanic at the Tracy Pumping Plant. Served as Chairman of Unit 2514 in 1965 and 1968; Unit Recorder, 1964 - 1965, and 1974 - 1977. Member of Unit Executive Committee, 1971 - 1974. Was a Shop Steward for P.G.&E. from 1949 - 1956; for U.S.B.R. from 1956 to the present. Served on the Joint Apprenticeship Committee, U.S.B.R., from 1962 to 1967; Labor Management Committee, U.S.B.R., from 1964 to 1967; U.S.B.R. Negotiating Committee continuously since 1957. Attended Shop Steward conferences from 1971 through 1976; Unit Officer's conferences in 1971 and 1975. Was a delegate to 1975 U.S.B.R. - I.B.E.W. Government Operations Conference - was Special Conference Photographer for I.B.E.W. Journal. Is a recipient of the I.B.E.W. Life Saving Award.

KATHY F. TINDALL

Initiated by Local Union 1245 on July 1, 1973; is a member of Unit 3311 - Reno; is employed by Sierra Pacific Power Company as a Customer Service Clerk in Reno. Is the Executive Board member - Northern Area, having served since October, 1976. Attended the Advisory Council meeting as an alternate for Sierra Pacific Power Company in August 1976. Was a Shop Steward



KATHY F. TINDALL

from 1973 to 1976. Is a member of the Local Union Communications Committee and the Local Union Political Education Committee. Served on the Sierra Pacific Power Company Ballot Committee in 1974, and the Sierra Pacific Power Company's Negotiating Committee in 1975 and 1976. Attended the I.B.E.W. Regional Utility Conference in April 1977, and the State AFL-CIO conference on Women in the Work Force in April 1977.

BUSINESS MANAGER - FINANCIAL SECRETARY (Delegate to International Convention)



DEAN COFER

DEAN COFER

Initiated by Local Union 1245 on December 1, 1963. Was first employed by the Local Union on September 1, 1966 as an Organizer. On January 1, 1967 was hired by the Local Union as a Business Representative. Resigned Business Representative position on April 4, 1977 in order to be a candidate for Business Manager - Financial Secretary. Most recent area of responsibility included: De Sabla Division, Citizens Utilities Company of California, California Pacific Utilities Company (Lassen Division), State T.V. Cable, Paradise Irrigation District, and Pacific Tree Expert Company. Previous areas served included: General Construction, Sacramento and Colgate Divisions, Oroville-Wyandotte Irrigation District, Thermalito Irrigation District, Richvale Irrigation District, and Yuba County Water Agency. Organized Yuba County Water Agency, City of Gridley, State T.V. Cable, and Thermalito Irrigation District. Member of 1966 PG&E Wage and Contract Negotiating Committee. Chairman of 1967 - 1968 G.C. Data Processing Centers Negotiating Committee. Member of 1971 Pacific Tree Expert Company Negotiating Committee. Advisor to 1971 Special Negotiating Committee for G.C. Lines of Progression. Member of 1972 - 1973 Substation Interim Bargaining Committee. Has served as Union spokesman for negotiating committees at O.W.I.D., R.I.D., Yuba County Water Agency, T.I.D., State T.V. Cable, C.P.U. Lassen Division, and Citizens Utilities Company of California. Was a member and Executive Committee member of Unit 3815 - Davis, in 1963 and 1964. Is currently a member of Unit 3417 - Paradise. Was a Shop Steward in G.C. from 1963 to 1966. Served as a Member and Chairman of the General Construction Department Grievance Committee from 1963 - 1966. Is a Delegate, First Vice President, Chairman of the Law and Legislation Committee, and Member of the Executive Committee of the Butte and Glenn Counties Central Labor Council. Was a Delegate and Executive Committee Member of the Sacramento Central Labor Council. Is now serving as the Labor Representative on the Butte County Personnel Appeals Commission. Has conducted Shop Steward Training Seminars for Shop Stewards in General Construction, Sacramento Division, Colgate Division, De Sabla Division, Shasta Division, and Citizens Utilities Company of California. Attended Local Union Conferences at Asilomar and Oakland. Attended Clerical Conference in 1967. Attended Unit Officer Training Conferences

at Konocti in 1969, Claremont in 1971, and Concord in 1974. Attended Wage-Price Control Seminar at U.C., Berkeley in 1971. Attended Northern California Electrical Workers Conferences in 1966, 1968 and 1970. Attended State AFL-CIO Conferences on Public Employment Collective Bargaining in 1973, 1974, and 1975. Delegate to I.B.E.W. Utility Conference in 1976. Delegate to I.B.E.W. National Telephone Conferences in 1975 and 1976. Has attended numerous seminars and conferences dealing with OSHA, CAL-OSHA, Unemployment and Disability Insurance. Has attended numerous Advisory Council meetings since 1966. Attended Shoring Safety School in Sacramento in 1974. Graduate of the Morris Hurley Management and Industrial Relations Program in 1968. Graduate, Collective Bargaining Course, AFL-CIO Labor Studies Program in 1973. Has represented Local Union 1245 before the Public Utilities Commission (re: employees discount) in Red Bluff in 1976.



L. L. MITCHELL

L. L. MITCHELL

Initiated by Local Union 1245 on October 1, 1942. Business Manager - Financial Secretary March 1971 to present. Previously employed: Lineman and subforeman PG&E in Humboldt and Stockton Divisions. During this period served as Steward, grievance committee member, Unit Chairman and Executive Committee member Eureka Unit from 1942 - 1951; Local 1245 Executive Board Member 1946 - 1951; Temporary organizer International office - 3 months, 1950; full-time employment as Business Representative March 1951 - February 1964; service areas of City of Lodi, Shasta, Humboldt & Stockton Divisions and Kings District of San Joaquin Division; Assistant Business Manager, February 1954 - November 1965; Senior Assistant Business Manager, November 1965 - 1971.

Service with Local 1245 includes: membership on all PG&E negotiating committees (benefits, pension, apprenticeship, wages, and working conditions) since 1946; spokesman and member of various negotiating committees on public and private employers since 1951, including PG&E, Pacific Gas Transmission, Standard Pacific Gas Lines, Inc., Citizens Utilities Co. of California, Sierra Pacific Power Co., U.S. Bureau of Reclamation, Sacramento Municipal Utility District, Sacramento Transit Authority, plus various Community Antenna Television Companies, municipalities and Rural electrification associations; joint apprentice training committees, P.G.&E., P.G.T. and S.P.P. Co., Joint review committees for Stan Pac, Sierra Pacific, P.G.T. and P.G.&E. Secretary; assistant and executive editor Utility Reporter; Local 1245 System safety committee; expert witness and member various arbitration boards. Planned and directed steward and educational programs since 1953, including the Asilomar, Shattuck, Leamington, Claremont and Konocti Local Union Conferences.

Visiting lecturer at Stanford School of Business Administration, San Jose State College, University of San Francisco, University of California and Hastings School of Law.

Now serving as Labor Representative on Advisory Committees to: Solar Energy Research Institute; State of California Energy Resources Conservation and Development Commission; U.C. Center for Labor Studies Occupational Health Group (chairman); and the Institute of Industrial Relations, University of California.

Serving on Executive Board: California Labor Committee on Political Education; California Council on Economic and Environmental Balance; California Federation of Labor. Member State Federation Standing Committees on Legislation, Public Employee Affairs and Occupational Health and Safety (chairman). I.B.E.W. representative steering committee Inter Union Gas Conference; 1245 Trustee on National Pension trust; Vice-chairman Joint Executive Conference Northern California Electrical Workers; Vice-President California Federation of Labor and president of Industrial Relations Research Associates.

Past Executive Board: Bay Area Crusade; Nevada State Association of Electrical Workers (served as vice-presi-

dent and president); California State Association of Electrical Workers. Served as Co-chairman Labor and Management Public Affairs, Western Regional Conference. Past member of Association of Training Directors and Local 1245 Pension Administration Committee.

Labor Education Programs and Seminars: University of San Francisco; University of Illinois; University of California Certificate Program; I.B.E.W.-AEC Industrial Atomic Uses, Hazards and Control Program; Hurley Management and Industrial Relations Program; Harvard Trade Union Program (Class president and valedictorian).

Delegate to numerous conferences and conventions such as: I.B.E.W. Conventions since 1950 (served on Treasurer's Report Committee 1974); I.B.E.W. National Telephone Conferences 1954 - 1970; I.B.E.W. Regional Utility Conferences since inception; Ninth District Annual Progress meetings 1950 on; Southern, Central and Northern Joint Executive Conferences Electrical Workers; California and Nevada State Association of Electrical Workers; California, Western and International Labor Press Conventions; California and Nevada Labor Federation conventions (served on rules, resolutions and legislation committees); AFL Convention 1954, AFL-CIO conventions after merger; California, Nevada, Western Region and National COPE conventions; Labor and Management Public Affairs Western Region Conferences; California Labor Federation Legislative conference; California Governor's Safety conference; California Council for Health Plan Alternatives; Tri-State Utility Conference and Alameda & Contra Costa County Central Labor Councils.

TREASURER



NANNETTE BROWNLEE

NANNETTE BROWNLEE

Initiated by Local Union 1245 on November 1, 1970. Is a member of Unit 3815 - Davis. Is employed by P.G.&E. as a Garageman in General Construction at the Davis Service Center. Is the Recorder for Unit 3815 and has been a Shop Steward since October 1976. Was a delegate to the Women in the Work Force Convention in April of 1977.

DOROTHY F. GUTIERREZ

Initiated by Local Union 1245 on August 1, 1963.

JEROME S. JANKE

Initiated by Local Union 1245 on April 1, 1972.

JAMES M. LYDON

Initiated by Local Union 1245 on April 1, 1956. Is a member of Unit 2311 - Oakland. Is employed by P.G.&E. as a Light Crew Foreman in Oakland. Appointed as a Shop Steward, East Bay Division, July 1960. Still serving in that capacity. Has attended Shop Stewards Conferences in the East Bay Division. Has served on the Executive Committee, Vice Chairman, and Chairman of Unit 2311 - Oakland. Served as a member of the Local Union Trustee Committee. Elected to the Advisory Council in July 1962 and served until September 1963. Served on the Local Union Executive Board in the following capacities: Treasurer, September 1963 to November 1964; Central Area Board Member, November 1964 to November 1969; Recording Secretary, November 1969 to June 1971; Central Area Board Member, November 1971 to June 1974. Served on the East Bay Division Grievance Committee from August 1962 until December 1964, serving as its Chairman from October 1962 to December 1964. Served as a Local Union Delegate to the Alameda County Central Labor Council, including being a member of that Organization's Investigating Committee for three (3) years.

Served as a delegate to the 9th District

Treasurer (cont'd)

I.B.E.W. Progress Meeting in October 1963, October 1965, and August 1973. Served as a delegate to the U.C. Seminar "Labor and the Free Society" in December 1963. Served as a delegate to the Nevada State Association of Electrical Workers in 1964. Attended the Labor-Management School at the University of San Francisco in March 1964, March 1965, and October 1972. Served as a delegate to the California State Association of Electrical Workers in August 1964, August 1966, August 1967, February 1968, September 1968, August 1969, and August 1970. Served as a delegate to the San Francisco Pre-General Election Convention in September 1964 and August 1970. Served on the Local Union Ways and Means Committee as a member and as its Chairman.

Served as a delegate to the California Labor Federation Conventions in 1964, 1966, 1968, 1970, and 1972. Served as a delegate to the Governors Industrial Safety Conference in February 1965, and February 1968. Represented Local Union 1245 at the Veterans Hospital Christmas Committee in April 1966, October 1966, and April 1968. Served as a delegate to the Joint Executive Board Conference of Northern California Electrical Workers in May 1966, October 1966, May 1968, November 1969, and May 1970. Served as an Elected Delegate to the I.B.E.W. International Convention in September 1966 (28th Convention). Served as a delegate to the State AFL-CIO Legislative Conference in April 1967. Served as a delegate to the Conference on "Undergrounding of Utilities" in November 1967.

Served as a delegate to the California State C.O.P.E. Endorsing Conference in April 1968; served as a delegate to the Inter Union Gas Conference in March 1969 and January 1972. Attended and participated in the Unit Chairman Conference at Konocti in October 1969; represented Local Union 1245 at the Awards Luncheon of the United Bay Area Crusade in November 1969; represented Local Union 1245 at the annual Eagle Scout Recognition Dinner in February 1970 and February 1973. Served as a delegate to the I.B.E.W. Regional Utility Conference in February 1970, March 1971, and March 1973; served as a delegate to the Nevada State AFL-CIO Convention in July 1970. Represented Local Union 1245 at "Politics 70" sponsored by P.G.&E. Served as a delegate to the Northern California Construction Institute "What Price Man" in April 1971. Attended the LAMPAC meeting in September 1973. A member of the P.G.&E. Ballot Committee in April 1974.



EINAR E. PETERSEN

EINAR E. PETERSEN

Initiated by Local Union 1245 on August 1, 1971. Is a member of Unit 4014 - Elk Grove. Is employed by Citizens Utilities Company as an installer/repairman at Elk Grove. Is Local Union Treasurer, having served since April 1976. Is a member of the Executive Committee of Unit 4014, having served as Vice Chairman in 1973 and as Chairman in 1973 - 1974. Was a Shop Steward from 1975 to 1976. Served on the Citizens Utilities Company Ballot Committee Medical Negotiations in 1974, and was a delegate to the I.B.E.W. Ninth District Progress meeting in August 1976.

JAMES L. ROWLEY

Initiated by Local Union 1245 on April 1, 1966.

STANTON A. SLEEPER

Initiated by Local Union 1245 on August 1, 1967. Is a member of Unit 3711 - Marin County. Is employed by P.G.&E. as a Lineman in San Rafael. Served as Recorder for Unit 3716 - Napa from July 1975 to October 1976. Has been a Shop Steward since 1968, serving in G.C. and North Bay Divisions. Has been a delegate to the Napa-Solano Central Labor Council for two years. Has completed two North Bay Shop Stewards training programs.

EXECUTIVE BOARD - SOUTHERN AREA

Executive Board Southern (cont'd)

CHARLES BIANCO

Initiated by Local Union 1245 on February 1, 1946.

CHARLES M. HAVER

Initiated by Local Union 1245 on April 1, 1961.

ROBERT L. THOMSON

Initiated by Local Union 1245 on June 1, 1965; is a member of Unit 1513 - Santa Cruz; is employed by P.G.&E. as a Lineman in Santa Cruz. Is currently the Advisory Council member for the City of Santa Clara and San Jose Division. Is Chairman of Unit 1513, having served since 1971; has been a Shop Steward since 1969; is currently the Chairman of the San Jose Division Joint Grievance Committee. Was a member of the Local Union Safety Advisory Committee from November 1971 to September 1972; served on the Ballot Committee for P.G.&E. ratification in 1974. Was a delegate to the Occupational Safety and Health Conference in San Francisco in 1972; attended the Local Union Leadership Conferences in 1971 and 1974.

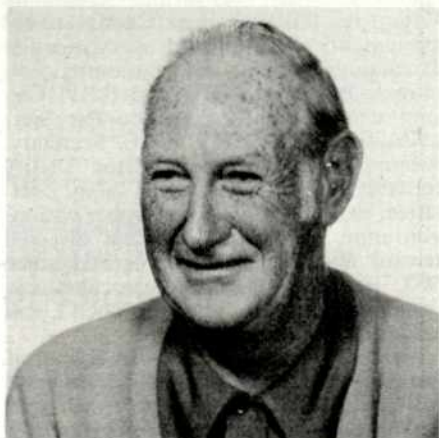
EXECUTIVE BOARD - CENTRAL AREA



JAY H. BURTON

JAY H. BURTON

Initiated by Local Union 1245 on May 1, 1956; is a member of Unit 2412 - San Francisco; is employed by P.G.&E. as a Light Crew Foreman in San Francisco. Is the Advisory Council member from San Francisco Division and General Office, having served since 1971. He has been Recorder for Unit 2412 since 1973 and a Shop Steward since 1970 and is currently Departmental Shop Steward for Gas T & D in San Francisco. Has been a member of the San Francisco Division Joint Grievance Committee since 1970 and has completed two San Francisco-North Bay Division Shop Steward Training Programs. Has attended the Leamington, Claremont and Sheraton Local Union Conferences.



C.P. "RED" HENNEBERRY

C.P. "RED" HENNEBERRY

Initiated by Local Union 1245 on May 1, 1952; is a member of Unit 2311 - Oakland; is employed by P.G.&E. as an Electrician in Oakland. He has previously served as the Local Union Vice President, Treasurer and Executive Board member for the Central Area, and in the past has served as Chairman and Member of the Executive Committee of Unit 2311. He has been Shop Steward since 1954 and a member of the Local Union Policy and Communications Committee. Attended I.B.E.W. International Conventions in 1970 and 1974, California Labor Federation Conventions in 1970 and 1972, California Association of Consumers Conference 1972, California State Association of Electrical Workers Conferences in 1971 and 1972, LAMPAC Meeting 1973, Inter Union Gas Conference 1974, Governor's Safety Conference, Cope Conference, Labor Management School - University of San Francisco, Konocti Conference 1969, Claremont Conference in 1971.

Executive Board Central Area (cont'd)

LUCIAN B. MACCARIO

Initiated by Local Union 1245 on July 1, 1964.



WARREN G. MANLEY

WARREN G. MANLEY

Initiated by Local Union 1245 on April 1, 1963; is a member of Unit 2412 - San Francisco; is employed by P.G.&E. as a Gas Mechanic in San Francisco. He is the Executive Board member - Central Area, having served since 1976. He was Shop Steward from June 1970 to March 1976, a member of the 1973-74 P.G.&E. Union Pension and Benefit Negotiating Committee. Was a delegate to the Inter-Union Gas Conference; attended I.B.E.W. Utility Conferences in 1976 and 1977, California Labor Federation, AFL-CIO Joint Legislative Conferences in 1976 and 1977, and has been a delegate to the San Francisco Central Labor Council since 1976.

ROBERT CARL WOODBURY

Initiated by Local Union 1245 on February 1, 1965.

EXECUTIVE BOARD - NORTHERN AREA

GAYLE A. BREWER

Initiated by Local Union 1245 on June 1, 1970.

HAROLD B. CROWHURST

Initiated by Local Union 1245 on January 1, 1962.

JAMES LEWIS DIETZ

Initiated by Local Union 1245 on December 1, 1961.

RICHARD FINNERAN

Initiated by Local Union 1245 on June 1, 1968.



DONALD J. GOODIN

DONALD J. GOODIN

Initiated by Local Union 1245 on February 1, 1970; is a member of Unit 3812 - Vacaville; is employed by P.G.&E. as a Lineman in Vacaville.

HOWARD N. STIEFER

Initiated by Local Union 1245 on November 1, 1967; is a member of Unit 3712 - Santa Rosa; is employed by P.G.&E. as a Lineman in Santa Rosa. He has been Shop Steward since April 30, 1975 and Departmental Shop Steward since August of 1975. He is a member of the Executive Committee of Unit 3712; a member of the 1976-77 P.G.&E. General Negotiating Committee; has completed the San Fran-

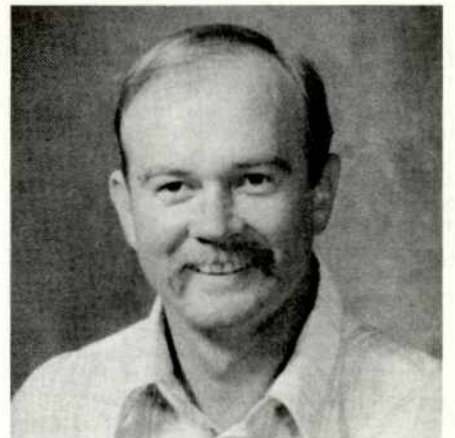
Executive Board Northern Area (cont'd)



HOWARD N. STIEFER

cisco-North Bay Shop Steward Training Program; was a delegate to the November 1975 Joint Executive Conference of Northern California Electrical Workers.

EXECUTIVE BOARD - AT-LARGE



JOE C. GREEN

JOE C. GREEN

Initiated by Local Union 1245 on June 1, 1974; is a member of Unit 1112 - Bakersfield; is employed by P.G.&E. as a Mechanic in the General Construction Dept. at Stockdale Sub-station. He is Shop Steward and Delegate to the Mono-Kern-Inyo Counties' Central Labor Council. He was a member of the General Construction Advisory Committee for the 1976-77 P.G.&E. Negotiations.



GUY E. MARLEY

GUY E. MARLEY

Initiated by Local Union 1245 on October 1, 1949; is a member of Unit 1513 - Santa Cruz; is employed by P.G.&E. as a Senior Field Clerk in General Construction at San Jose Processing Center. He is the Executive Board Member At Large, having served since 1973, and has been Shop Steward from 1949 to 1975.

MELVIN OLIVER

Initiated by Local Union 1245 on December 1, 1969; is a member of Unit 2312 - East Bay Area G.C.; is employed by P.G.&E. as a Miscellaneous Equipment Operator B in General Construction in Walnut Creek. Was Vice Chairman of Unit 2312 from February 1973 to June 1974; has been Shop Steward since March of 1972; served on Lay Off Committees for G. C. Gas in 1975.

MARVIN L. RUBENDALL

Initiated by Local Union 1245 on August 1, 1968; is a member of Unit 3815 - Davis; is employed by P.G.&E. as an Equipment Mechanic in General Construction at the Davis Service Center. Has been Shop Steward since 1970; Unit Recorder for Unit 3815 in 1973-74; a member of General Construction Joint Grievance Committee since 1971 and is currently the Chairman. Was a member of General Construction Lines of

**Executive Board
At-large (cont'd)**



MARVIN L. RUBENDALL

Progression Committees for the Gas Dept., Line Dept., and Services Dept. from 1972 to 1976; a member of the Equipment Rates Negotiating Committee from 1972 to 1975. Is a member of the 1976-77 P.G.&E. General Negotiating Committee.

**ADVISORY COUNCIL
MEMBER - SAN JOAQUIN
DIVISION OF P.G.&E.**

MICHAEL A. DEL RIO

Initiated by Local Union 1245 on May 1, 1967; is a member of Unit 1112 - Bakersfield; is employed by PG&E as a Lineman in Bakersfield. Has been a Shop Steward since 1973; served on 1976 PG&E Wage Negotiating Committee and 1976-77 PG&E General Negotiating Committee; was Chairman of 1974 & 1975 Safety Committee for Unit 1112.

THOMAS R. GARCIA

Initiated by Local Union 1245 on October 1, 1967.

WAYNE H. OWENS

Initiated by Local Union 1245 on November 1, 1965.

TOM G. THOMAS

Initiated by Local Union 1245 on January 1, 1971; is a member of Unit 1111 - Fresno; is employed by PG&E as Line Sub-Foreman in Fresno; currently is Vice Chairman of Unit 1111, and has served on the Unit's Executive Committee.

**ADVISORY COUNCIL
MEMBER - COAST VALLEYS
DIVISION OF P.G.&E.**



JOHN J. COLLENBACK

JOHN J. COLLENBACK

Initiated by Local Union 1245 on June 1, 1956; is a member of Unit 1211 - Salinas; is employed by PG&E as a Communications Technician in Salinas. Has been Vice Chairman of Unit 1211 since June 1971; served on Unit Committee for Retirement and Service Award Dinners.

JERRY D. SMITH

Initiated by Local Union 1245 on January 1, 1964; is a member of Unit 1211 - Salinas; is employed by PG&E as a Troublemaker in Salinas. Has been Chairman of Unit 1211 since June 1969, and a Shop Steward since January 1970. Attended Konocti, Claremont, and Sheraton Inn Leadership Conferences. Served as a member of Ballot Committee for PG&E Ratification.

KURTIS P. VANDERBUNDT

Initiated by Local Union 1245 on August 1, 1964.

**ADVISORY COUNCIL
MEMBER - PIPE LINE
OPERATIONS DEPARTMENT
OF P.G.&E.**



RUBEN ARREDONDO

RUBEN ARREDONDO

Initiated by Local Union 1245 on October 1, 1952; is a member of Unit 1311 - Barstow; is employed by PG&E as a Senior Compressor Plant Operator at Hinkley Compressor Station. Is current Advisory Council member for Pipe Line Operations Department; has been a Shop Steward since 1973.

**ADVISORY COUNCIL
MEMBER - CITY OF SANTA
CLARA AND SAN JOSE
DIVISION OF P.G.&E.**

STEPHEN M. CRAMER

Initiated by Local Union 1245 on March 1, 1974; is a member of Unit 1513 - Santa Cruz; is employed by PG&E as a Helper in Santa Cruz. Has served as a Shop Steward since January, 1977.

JACK B. HILL

Initiated by Local Union 1245 on May 1, 1966.

LINDELL O. WILLIAMS

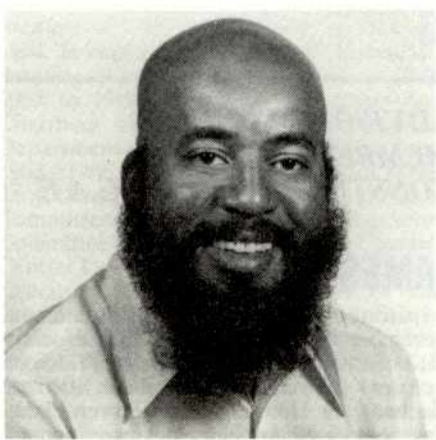
Initiated by Local Union 1245 on February 1, 1965; is a member of Unit 1511 - San Jose; is employed by PG&E as an Electrical Technician in San Jose. Is currently a Shop Steward.

**ADVISORY COUNCIL
MEMBER -
ALAMEDA/CONTRA COSTA
TRANSIT DISTRICT AND
EAST BAY MUNICIPALITIES**

LAWRENCE E. RYAN

Initiated by Local Union 1245 on August 1, 1972; is a member of Unit 2211 - Oakland General; is employed by the City of Alameda as an Electrical Maintenceman. Is currently the Advisory Council member for Alameda/Contra Costa Transit District and East Bay Municipalities; was a member of the 1973 Negotiating Committee for the City of Alameda.

**ADVISORY COUNCIL
MEMBER - EAST BAY
DIVISION AND MATERIAL
CONTROL DEPARTMENT OF
P.G.&E.**



RAYMOND SHEPHERD

RAYMOND SHEPHERD

Initiated by Local Union 1245 on December 1, 1964; is a member of Unit

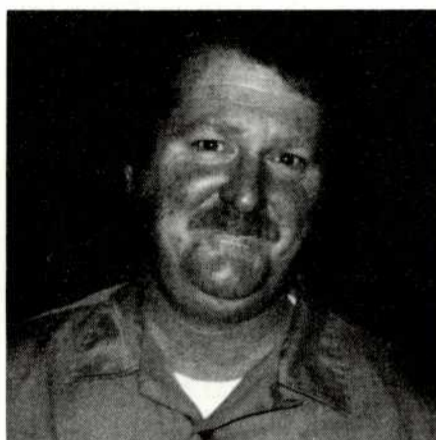
**East Bay Division
and Material Control
Department of PG&E (cont.)**

2311 - Oakland; is employed by P.G.&E. as a Heavy Truck Driver in Oakland. Currently the Advisory Council member for East Bay Division and Materials Control Department - since May, 1976; has been a Shop Steward since 1969; was a member EEOC Committee in 1973; member of East Bay Division Safety Committee.

**ADVISORY COUNCIL
MEMBER - SAN FRANCISCO
DIVISION AND GENERAL
OFFICE OF P.G.&E.**

KENNETH D. PARKER

Initiated by Local Union 1245 on May 1, 1971.



FRANK A. SAXSENMIER

FRANK A. SAXSENMIER

Initiated by Local Union 1245 on November 1, 1959; is a member of Unit 2412 - San Francisco; is employed by PG&E as a Serviceman in San Francisco. Has been Vice Chairman of Unit 2412 since June of 1974; Departmental Shop Steward since April 1, 1976 for Gas Service Department; current member of Division Safety Committee; served as a member of the Local Investigating Committee; presently attending Shop Steward training classes for San Francisco and North Bay Divisions.

**ADVISORY COUNCIL
MEMBER - STOCKTON
DIVISION OF P.G.&E. AND
CITY OF LODI**

PATRICK S. NICKESON

Initiated by Local Union 1245 on March 1, 1965; is a member of Unit 2511 - Stockton; is employed by P.G.&E. as a Serviceman in Stockton. Is currently the Advisory Council Member for Stockton Division and the City of Lodi, having served since 1973; is a Shop Steward; has been a member of Stockton Joint Grievance Committee since 1972; was a member of Unit 2511 Social Committee 1975-76; is a member of P.G.&E. 1976-77 General Negotiating Committee; attended the 1974 Leadership Conference.

**JOSEPH V. ROBINSON,
JR.**

Initiated by Local Union 1245 on April 1, 1959; is a member of Unit 2517 - Sonora; is employed by P.G.&E. as a Water Systems Repairman in Sonora. Has been a Shop Steward since 1973 and a member of the Water Dept. Interim Negotiating Committee since 1974; has attended Shop Steward Training and OSHA Training classes.

**ADVISORY COUNCIL
MEMBER - TRANSIT
AUTHORITY OF THE CITY OF
SACRAMENTO**

WESLEY M. DUVALL

Initiated by Local Union 1245 on November 1, 1973.

NED FOX

Initiated by Local Union 1245 on November 1, 1973.

WILFRED NUNEZ

Initiated by Local Union 1245 on February 1, 1962; is a member of Unit 3011 -

**Transit Authority of
the City of Sacramento (cont'd)**

Sacramento RTD; is employed by Sacramento Regional Transit District as a Partsman. Is currently the Advisory Council Member for the Transit Authority for the City of Sacramento, having served since June of 1968; was a Shop Steward from June 1964 to June 1968; and served as Chairman and Vice Chairman of Unit 3011.

MILFORD PAUL REID

Initiated by Local Union 1245 on January 1, 1975.

**ADVISORY COUNCIL
MEMBER - PACIFIC GAS
TRANSMISSION COMPANY**



ALEXANDER M. ADAMS

ALEXANDER M. ADAMS

Initiated by Local Union 1245 on February 1, 1963; is a member of Unit 3024 - Redmond, Oregon; is employed by Pacific Gas Transmission Company as a Senior Clerk in Redmond. He is the current Advisory Council member for PGT, having served since 1974; is Vice Chairman of Unit 3024.

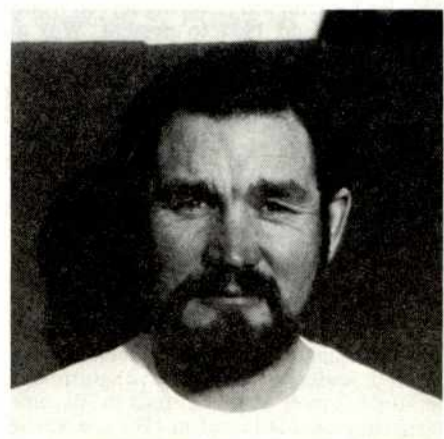


FRANK R. LOCATI

FRANK R. LOCATI

Initiated by Local Union 1245 on May 1, 1963; is a member of Unit 3023 - Walla Walla, Washington; is employed by Pacific Gas Transmission Company as a Mechanic in Wallula. Served as Advisory Council member for PGT from 1971 to 1974; was Recorder for Unit 3023 from 1962-1964 and 1976 to present; is a Shop Steward, having served since 1962. Is Chairman of PGT Joint Grievance Committee, serving since 1971; is currently serving on the PGT Negotiating Committee. He served on the Interim Committee for Repairman Training Program and Unit Overhaul Guidelines.

**ADVISORY COUNCIL
MEMBER - HUMBOLDT
DIVISION OF P.G.&E.**



JIMMY S. RUSSELL

JIMMY S. RUSSELL

Initiated by Local Union 1245 on December 1, 1961; is a member of Unit 3111 - Eureka; is employed by PG&E as a Line Subforeman in Eureka. He is currently

**Humboldt Division
of P.G.&E. (cont'd)**

a Shop Steward and has served as Unit Recorder and a member of the Executive Committee for Unit 3111.



RAYMOND R. SKIDMORE

RAYMOND R. SKIDMORE

Initiated by Local Union 1245 on October 1, 1955; is a member of Unit 3111 - Eureka; is employed by P.G.&E. as a Control Technician at Humboldt Bay Power Plant. Is currently the Advisory Council member Humboldt Division, having served since 1974; was a Shop Steward from 1958 through 1967 and Recorder of Unit 3111 from 1958-1967; served on the Steam Maintenance Advisory Committee from 1958-1962 and the Steam Dept. Interim Negotiating Committee from 1958-1962; served on the Control Technician Job Definition Committee 1969-1970; was a member of the Joint Pole Dance Committee for Unit 3111 in 1961-1962. Attended Local Union Conferences in 1958-1959 and 1974.

**ADVISORY COUNCIL
MEMBER - SHASTA DIVISION
OF P.G.&E.**

RICHARD M. HAFNER

Initiated by Local Union 1245 on June 1, 1969.

**ADVISORY COUNCIL
MEMBER - SIERRA PACIFIC
POWER COMPANY**



JAY RUSSELL KILLGORE

JAY RUSSELL KILLGORE

Initiated by Local Union 1245 on July 1, 1963, is a member of Unit 311 - Reno; is employed by Sierra Pacific Power Company as a Customer Serviceman in Reno. Is currently the Advisory Council member for Sierra Pacific Power Company; the Recorder for Unit 3311, having served from 1967 to 1969 and 1971 to present. Was a Shop Steward from 1966 to 1970; served on the Sierra Pacific Power Negotiating Committee in 1974 and the Interim Negotiating Committee in 1969, 1973, and 1976. Served as delegate to the Nevada State AFL-CIO Convention in 1974-75 and was a member of the Executive Board for the Nevada State Electrical Workers Association in 1974 and 1975. Attended the Inter-Union Gas Conference in 1976, the Lemington and Claremont Local Union Conferences, and the Unit Chairmen and Recorders Conference in 1975.

BARRY E. MITCHELL

Initiated by Local Union 1245 on February 1, 1969; is a member of Unit 3311 - Reno; is employed by Sierra Pacific Power Company as a Lineman in Reno. He has been a Shop Steward since 1976 and served on the 1976 Negotiating Committee for Sierra Pacific Power Company.

**ADVISORY COUNCIL
MEMBER - DE SABLE
DIVISION OF P.G.&E.**

THOMAS R. MANNING

Initiated by Local Union 1245 on March 1, 1974.

**ADVISORY COUNCIL
MEMBER - DRUM DIVISION
OF P.G.&E.**

STANLEY P. JUSTIS

Initiated by Local Union 1245 on January 1, 1947; is a member of Unit 3511 - Auburn; is employed by P.G.&E. as a Troublemaker in Auburn. Is the Advisory Council member for Drum Division having served since 1958; served two terms as Unit Recorder, two terms as Unit Chairman, and two terms as Vice Chairman for Unit 3511. Has been a Shop Steward since 1956 and a member of the Drum Division Joint Grievance Committee since 1960, having served as the Committee Chairman during the period of 1974 to 1976. Has served on the Local Union Bylaws Committee and has twice been a delegate to the 9th District IBEW Progress Meetings.

**ADVISORY COUNCIL
MEMBER - COLGATE
DIVISION OF P.G.&E.**

ARLIE L. BAKER

Initiated by Local Union 1245 on August 1, 1960.



LAWRENCE H. CASSERLY, JR.

**LAWRENCE H. CASSERLY,
JR.**

Initiated by Local Union 1245 on February 1, 1955; is a member of Unit 3611 - Marysville; is employed by P.G.&E. as a Materials Leadman in Marysville. Has served as Chairman of Unit 3611 since 1974; Shop Steward from 1964 to 1968 and from 1972 to present. Has been a member of the Colgate Division Joint Grievance Committee for three years and served on the Materials Dept. Interim Negotiating Committee for 3 years.

**ADVISORY COUNCIL
MEMBER - NORTH BAY
DIVISION OF P.G.&E.**

RICHARD R. MADDEN

Initiated by Local Union 1245 on February 1, 1968; is a member of Unit 3711 - Marin County; is employed by P.G.&E. as an Electrician in San Rafael. Was a Shop Steward for San Francisco Division from 1969 to 1972 and is currently a Shop Steward in North Bay Division, having served since 1972; and is currently a Departmental Shop Steward; is a member of the Unit 3711 Safety Committee.

**ADVISORY COUNCIL
MEMBER - SACRAMENTO
DIVISION OF P.G.&E.**

EDWIN K. BUSBEE

Initiated by Local Union 1245 on February 1, 1971.

WILLIAM TOMLINSON

Initiated by Local Union 1245 on December 1, 1961; is a member of Unit

**Advisory Council Member - Sacramento
Division of P.G.&E. (cont'd)**

3813 - Placerville; is employed by P.G.&E. as a Line Subforeman in Placerville. Has served as Recorder of Unit 3813 from 1972 to 1974 and Chairman since 1975. Has been Shop Steward since 1971 and Advisory Council Member for Sacramento Division since June of 1975. Was employed as a Business Representative for Local Union 1245 for 6 months, is a member of the Division Safety Committee, and has attended a number of Shop Steward meetings.

**ADVISORY COUNCIL
MEMBER - SACRAMENTO
MUNICIPAL UTILITY
DISTRICT**

RICHARD LEE DAUGHERTY

Initiated by Local Union 1245 on February 5, 1953.

WILLIAM V. HAZLETT

Initiated by Local Union 1245 on June 1, 1974; is a member of Unit 3911 - Sacramento Municipal Utility District; is employed by SMUD as a Communications Equipment Technician in Sacramento. Is a member of the Interim Negotiating Committee with respect to the District's Standard Practices.

CHARLES F. VANDERPOOL

Initiated by Local Union 1245 on June 1, 1974; is a member of Unit 3912 - Fresh Pond (SMUD); is employed by SMUD as an Electrician at Fresh Pond. Is currently the Chairman of Unit 3912 having served since March of 1977, was Vice Chairman from January to March 1977 and an Executive Committee member from July 1976 to January 1977.

**ADVISORY COUNCIL
MEMBER - UNITED STATES
BUREAU OF RECLAMATION,
REGION 2**

CHARLES J. ERIKSON

Initiated by Local Union 1245 on February 1, 1969.

WILLIAM R. MILLER

Initiated by Local Union 659 on June 16, 1958 and deposited a traveling card into Local Union 1245 on June 1, 1962; is a member of Unit 2514 - Tracy; is employed by U.S.B.R. as a Line Foreman at Tracy.

**ADVISORY COUNCIL
MEMBER - CITIZENS
UTILITIES COMPANY OF
CALIFORNIA**

PHILIP J. BLYTH

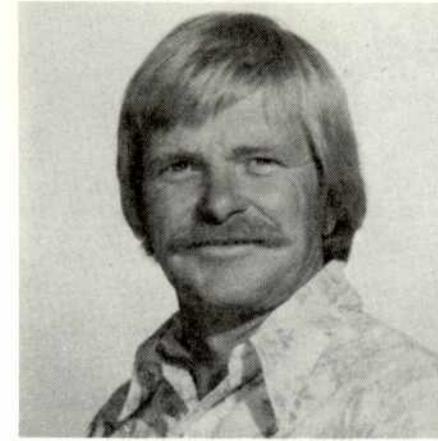
Initiated by Local Union 1245 on January 1, 1970; is a member of Unit 4015 - Elk Grove; is employed by Citizens Utilities Company of California as a Central Office Maintenceman at Elk Grove. Has been an Advisory Council member since 1974, Shop Steward for Citizens Utilities since 1973, served as Vice Chairman of Unit 4014 in 1973, and served on the Citizens Utilities Ballot Committee in 1974. He has attended Shop Steward Conferences in 1974 and 1977 and Local Union Conference for Unit Officers in 1974.

**ADVISORY COUNCIL
MEMBER - GENERAL
CONSTRUCTION OF P.G.&E.**

JAMES E. FINDLEY

Initiated by Local Union 1245 on December 1, 1973; is a member of Unit 3712 - Santa Rosa; is employed by P.G.&E. in General Construction as a Station Mechanic at Humboldt Bay Power Plant. Has been a Shop Steward since January 1974 at the Geysers Power Plant and Humboldt Bay Power Plant. Served as a member of the Humboldt Division Safety Inspection Committee in 1977; completed the San Francisco-North Bay Division Shop Steward's Training Program.

**Advisory Council Member - General
Construction of P.G.&E. (cont'd)**



BILL TWOHEY

BILL TWOHEY

Initiated by Local Union 1245 on May 1, 1969; is a member of Unit 1514 - San Jose Area G.C.; is employed by P.G.&E. as a Miscellaneous Equipment Operator B in General Construction at Cupertino. Is currently Advisory Council member for General Construction, having been appointed in February 1977; is Chairman of Unit 1514 and has been a Shop Steward since 1973; served on the General Construction Joint Grievance Committee since 1975; served on the P.G.&E. Wage Negotiating Committee in 1975-1976; is a member of the P.G.&E. General Negotiating Committee for 1976-1977; attended the 1974 Leadership Conference.

ALEXANDER WASHINGTON

Initiated by Local Union 1245 on May 1, 1965.

WILLIE R. WELDON, JR.

Initiated by Local Union 1245 on October 1, 1973; is a member of Unit 1112 - Bakersfield; is employed by P.G.&E. as an Apprentice Electrician in General Construction at Stockdale Substation.

**ADVISORY COUNCIL
MEMBER - TREE TRIMMER
COMPANIES**

CARLOS A. DAVISON

Initiated by Local Union 1245 on March 1, 1971.

**ADVISORY COUNCIL
MEMBER - CLERICAL-AT-
LARGE OF P.G.&E.**

LITHA M. SAUNDERS

Initiated by Local Union 1245 on May 1, 1973; is a member of Unit 2515 - Modesto; is employed by P.G.&E. as a Clerk-Typist C in Modesto. Is currently a Shop Steward.



BARBARA J. SYMONS

BARBARA J. SYMONS

Initiated by Local Union 1245 on June 1, 1968; is a member of Unit 1501 - San Jose Clerical; is employed by P.G.&E. as a Clerk-Steno C in Edenvale Service Center. Was Recorder for Unit 1501 in 1973-1974, and Chairman of Unit 1501 from 1975 to present; has been a Shop Steward since 1971; was a member of the Clerical Ad Hoc Negotiating Committee in 1974; was a member of the P.G.&E. Wage Negotiating Committee in 1975; has been a member of the San Jose Division Joint Grievance Committee from 1975 to present; attended the Women in the Work Force Conference in April 1977; attended the Advisory Council meeting as an alternate for P.G.&E. Clerical-at-Large.

Advisory Council Member - Clerical-
At-Large of P.G.&E. (cont'd)

NONA B. THOMPSON

Initiated by Local Union 1245 on June 1, 1973.

**ADVISORY COUNCIL
MEMBER - SAN FRANCISCO
VICE PRESIDENT'S &
COMPTROLLER'S OFFICE OF
P.G.&E.**



EDUARDO VALLEJO

EDUARDO VALLEJO

Initiated by Local Union 1245 on August 1, 1967; is a member of Unit 2401 - San Francisco Clerical; is employed by P.G.&E. as a Clerk C in General Office. Is Local 1245's Recording Secretary from 1976 to present; was an Advisory Council member for San Francisco Vice President & Comptroller's Office from 1974 to 1976; has served as the Chairman, Vice-Chairman, Recorder of Unit 2401. Was a Shop Steward from 1967 to 1976; was Chairman of General Office Joint Grievance Committee from 1972 - 1973; a member of Committee for Local Union Clerical Lines of Progression, 1971; a member of 1973-1974 P.G.&E. General Negotiating Committee, and 1975 and 1976 P.G.&E. Wage Negotiating Committees. Was a member of the Clerical Job Grading Committee for 1973 - 1976; was a member of the E.E.O.C. Compliance Committee, Clerical Hours Clarification Committee, P.G.&E. Wage & Contract Ballot Committee; Local Union Ways & Means, Administrative, and Benefit Committees for 1976 - 1977. Is a delegate to San Francisco Labor Council; attended Ninth District Progress meeting; attended Local Union conferences at Konocti and Claremont, and the Local Union Clerical conference.

**ADVISORY COUNCIL
MEMBER - CATV
OPERATING COMPANIES**

JOHN A. CENTENO

Initiated by Local Union 1245 on September 1, 1971.

DALE E. FOX

Initiated by Local Union 1245 on September 1, 1971; is a member of Unit 1216 - Santa Maria. Is employed by Teleprompter of Santa Maria as a Maintenance Technician. Is the current Advisory Council member for CATV Operating Companies. Has been a Shop Steward since 1971, and is a member of the Safety Committee for Unit 1216; served on the Negotiating Committee for Teleprompter of Santa Maria in 1971, 1974, & 1977.

**ADVISORY COUNCIL
MEMBER - IRRIGATION
DISTRICTS**



EARL DUANE BARTLOW

EARL DUANE BARTLOW

Initiated by Local Union 1245 on October 1, 1968; is a member of Unit 1122 - Merced Irrigation District; is employed by Merced Irrigation District as a Park Ranger at Barrett Cove. Is currently the Advisory Council member for Irrigation Districts, having served since 1971; was Vice-Chairman of Unit 1122 from 1972 to 1974; has been a Shop Steward since 1970. Was a member of the Unit 1122 Safety Committee 1972 - 1973.

Reno Area Stewards Attend training session

Local 1245 Shop Stewards from the Reno Area met on February 26, 1977. Business Representative John Stralla chaired the meeting. The Shop Stewards were given an open book test on contract knowledge and also tested on knowledge of the Local Union.

Stan Jones, Labor Commissioner for the State of Nevada, spoke to the Stewards about his activities and some of the current problems.

Asst. Bus. Mgr. John Wilder reported on the bargaining situation with PG&E. He also gave a status report on the suit involving the elimination of the Sierra Pacific Power Co. employee discount.

The stewards discussed current problems in their respective areas.



Stan Jones



The photos above, below and to the right show some of the people who attended the Reno Area Shop Stewards training session.



Appointments

Balloting Committee

PACIFIC GAS AND ELECTRIC COMPANY: Robert J. Azevedo, Chairman, Charles Bianco, F. O. Watkins, Lawrence W. Bruce, Joseph B. Graham, Jr., Frank De Maio, Debra J. Rocha, Felton G. Prescott, Raymond Milota, Laurence Hope, Victor Patton, Charles Larsen, Jr., James F. Parker, Gary E. Johnson, Rayphe Brewer. Alternates: Robert A. Burchfield, Otisteen Youngblood, Cyndi Santaella

DAVEY TREE SURGERY COMPANY: David Dockter, Larry Hellman, Thomas J. Ylarraz

Negotiating Committee

CITY OF BERKELEY: Charles Bulkley, Veodis Stamps
C.C.C.C.: Don Parker
SONIC TV: Joe Dairy, Bob Burns
CAL PAC, NEEDLES DIVISION: Anthony Frazier, Leo Puentes
CITY OF OAKLAND: Cecil Jackson, Arthur Pasch, Veodis Stamps
CITY OF LODI: Gary C. Mai, Mike Williams
PARADISE IRRIGATION DISTRICT: Jack L. Boles, Dale Turman
CITY OF HEALDSBURG: James Carlson, Manuel Lownes, Corbett Wheeler
ALAMEDA/CONTRA COSTA TRANSIT DISTRICT: Kenneth O. Lohre, Ted B. Ewing
SPPC POWER PRODUCTION INTERIM NEG. CTE.: William Maestretti

Grievance Committee

PG&E, GENERAL CONSTRUCTION: Donald H. Findley
PG&E, SAN JOAQUIN DIVISION: Mike Koontz
PG&E, PIPELINE OPERATIONS: Mark Smith
SIERRA PACIFIC POWER CO.: James C. Seevers, Madeline Cherry
PG&E, DE SABLA DIVISION: Warren E. Harris

Local Union Safety Committee

Marvin Rubendall - Chairman, replacing Steve McCartney, Dale Rogers, Barry Wilson, James Schneider

Conference Delegates

1977 UTILITY CONFERENCE: Howard Darington, Kathy Tindall, Jim Wilburn, Warren Manley, L. L. Mitchell, M. A. Walters, John Wilder
CALIFORNIA LABOR FEDERATION LEGISLATIVE CONFERENCE: Howard Darington, L. L. Mitchell, M. A. Walters, Jim Wilburn, Kathy Tindall, Warren Manley

A. PHILLIP RANDOLPH INSTITUTE: Veodis Stamps
LAMPAC: Howard Darington, L. L. Mitchell
CALIFORNIA STATE FEDERATION AFL-CIO "WOMEN IN THE WORK FORCE": Delegates: Sandy Zraggen, C.U.C.C.; Barbara Symmons, PG&E-San Jose; Margie McCauley, IBEW 1245; Joanne Anderson, IBEW 1245; Ruth Mitchell, IBEW 1245; Carol Kitchenmaster, Sierra Pacific; Kathy Tindall, Sierra Pacific; Cindy Naranjo, PG&E-Gen Office; Bernice Aston, PG&E-Gen Office; Nannette Brownlee, PG&E-Gen Const; Sandy Brown, PG&E-Gen. Const. Sponsored Delegates: Howard Darington, Teri Luthi, C.U.C.C.

WESTERN LABOR PRESS CONFERENCE: Ken Lohre, L. L. Mitchell

Political Education Committee

Jim Wilburn - Chairman, Kathy Tindall - Secretary, Warren Manley

Local Union Trustee Committee

Dave Strunk

Local Union Election Committee

Lancer Karber, PG&E-San Joaquin; F. O. Watkins, PG&E-Coast Valleys; Mark Smith, PG&E-Pipe Line Operations; Norman Mercer, PG&E-San Jose; Gary Abrahamson, PG&E-East Bay; George Lazaneo, PG&E-San Francisco; Debbie Rocha, PG&E-General Office; Felton Prescott, PG&E-Stockton; Ray Milota, PG&E-Humboldt; Harvey Iness, PG&E-Shasta; Larry Hope, PG&E-De Sabla; Clinton Wallington, PG&E-Drum; Charles Larson Jr., PG&E-Colgate; Ray Gallagher, PG&E-North Bay; Robert Renoude, PG&E-Sacramento; Don Findley, PG&E-General Construction; Jimmy Bender, Sierra Pacific Power Company; George P. Daly, Citizens Utility Company; Mike Paulsen, Sacramento Municipal Utility District; Harvey Hammond, United States Bureau of Reclamation; Donald Kinkade, City of Redding



AFL-CIO and Musicians' Union Launch Consumer Boycott of Ringling Circus

Responding to an attempt at union-busting by the Ringling Bros. and Barnum & Bailey Circus, AFL-CIO President George Meany has called on all union members and their families to support a nationwide consumer boycott of the Ringling Circus called by the American Federation of Musicians, AFL-CIO. The boycott has been endorsed unanimously by the AFL-CIO Executive Council.

After many years of employing members of the AFM, the Ringling Circus has engaged Cas-Pet, an unfair and anti-AFM contractor, to supply its music. The AFM has represented professional musicians in America for more than 80 years, and its members have rendered services to the Ringling Circus for much of that time.


The boycott is being accompanied by a nationwide drive to gain signatures on petitions protesting Ringling's action,

and an informational campaign in every city on the circus' route.

Musicians' President Hal C. Davis described the central issue of the dispute as "pure and simple union-busting. After many years of employment by the Ringling Circus, the professional musicians who are represented by the AFM have been cast aside, established conditions have been wiped out, and musicians have lost their jobs. This poses a threat to every union in the country. That is why we are asking the men and women in the labor movement, and their friends, not to buy tickets to the Ringling Circus until circus management returns to the bargaining table in a reasonable attempt to reach an honorable agreement."

President Meany said that Ringling Brothers "has left the labor movement no alternative but to support and implement to the highest degree possible" the nationwide consumer boycott.

A New Act



**Please Support the
National Consumer Boycott of
the AMERICAN FEDERATION
of MUSICIANS AFL-CIO**

1975 Scholarship Winner Killed in auto accident

Mark Robert Guell, 1975 Local 1245 Scholarship Winner, was killed Easter morning, April 10, 1977 in an automobile accident. Mark, son of Rose Guell, Dispatcher for Local 1245 I.B.E.W., was a graduate of De La Salle High School and a student teacher at St. Agnes. He was presently enrolled at Diablo Valley College, and was to attend Chico State in September. Donations for the Mark Guell Memorial Fund can be sent to De La Salle High School, 1130 Winton Drive, Concord, California 94520.



MARK GUELL

LETTER OF AGREEMENT SUMMARIES

Editor's note: A copy of the full text of these letters is available to the members upon their written request to the Local Union.

Sierra Pacific Power Co.

No. 77-8-SPPC signed 5-3-77

Provides for reclassification of a Duplicating Machine and Supply Clerk to the classification of Customer Services Clerk in Reno.

No. 77-10-SPPC signed 4-29-77

Provides for reclassification of a lineman, who was injured on the job, to the classification of Field Clerk at South Lake Tahoe.

Pacific Gas and Electric Co.

No. 77-18-PG&E signed 5-6-77

Provides for placement of a miscellaneous Equipment Operator in General Construction, who was injured on the job, into a Meter Reader position in San Jose.

No. 77-23-PG&E signed 5-6-77

Provides for the return of a disabled employee to the position of Materialsman in the General Office Building Department and waives the typing and licensing requirement for this employee.

No. 77-26-PG&E signed 5-6-77

Provides for placement of a Lineman who had been on Long Term Disability, currently performing as an Inspector, into a vacant Assistant Foreman's Clerk position in San Rafael.

No. 77-27-PG&E signed 5-10-77

Provides for establishment of a Utility Transformer Repairman classification in Santa Rosa and for placement of an employee who has been on long term disability into that position.

No. 77-29-PG&E signed 4-27-77

Provides for establishment of a Supplemental Grievance Procedure for the recently organized employees in the Design Drafting Department.

'The American Connection': Bad News

The American Connection? They'll never make a movie about it because, unlike the French Connection, it doesn't involve anything as dramatic as heroin.

In 1976, drug-related deaths reported by the Cook County coroner's office in Chicago totalled 670. Almost half involved simultaneous use of more than one drug. Included in the fatal mixtures were alcohol and a variety of common pain-killers, sedatives, barbiturates and tranquilizers.

How can you protect yourself and your family against dangerous drug mixtures?

- Never mix drugs without consulting your doctor or pharmacist. That applies to all drugs — prescription and non-prescription — as well as alcohol.

- If you receive prescriptions from more than one doctor, avoid polypharmacy by keeping both doctors informed.

- Never drive under the influence of even one drug.

The American Connection involves drugstore drugs — prescription and non-prescription medicines — and it can be hazardous, too. Here's how it operates.

Suppose you or a member of your family take a drug, prescribed by your doctor, or non-prescribed. Then, without consulting your doctor or pharmacist, you take an additional medication.

The connection between those two medicines in your body can produce a dangerous drug interaction if one of them increases or "potentiates" the effect of the other drug. In other words, the whole may become greater than the sum of its parts.

Mixing drugs indiscriminately is called "polypharmacy," and it can lead to a very bad trip, especially when you're driving a car. But either way, the side effects are often dangerous.

An anti-acid or a sleeping pill may be harmless by itself. But taken together, the anti-acid can prolong the action of the sleeping pill. Result? You're still punchy the next day.

"MAO inhibitors" are widely prescribed for depression. (MAO stands for mono-amine oxidase.) If they're combined with some non-prescription cold remedies, blood pressure can soar, leading to coma and even death.

Oral anticoagulants are prescribed for thrombophlebitis after childbirth, heart attacks and strokes. Combined with ordinary aspirin, they can cause hemorrhage.

Antidiabetic medicines can lower the blood sugar level too much when mixed with some drugs prescribed for high blood pressure and irregular heart beat. Mixed with alcohol (also a drug), they may produce trembling, sweating, and dizziness — symptoms of hypoglycemia, or low blood sugar.

Today, the most common and lethal blend is the alcohol-tranquilizer connection. Alabama State Toxicologist Dr. Carl J. Rehling reports:

"This drug-alcohol combination in many instances produces a mutual aid effect whereby each enhances the effect of the other, so that 1 plus 1 no longer make 2, but make 4 or 5 units of effect. Dr. Rehling adds that the combination is suspected of causing "numerous accidental deaths" on the highway.

A five-year California study by the Santa Clara County Laboratory of Criminalistics found that of 10,436 persons arrested for drunken driving, almost 25 per cent were suffering alcohol-drug effects. A total of 273 different drugs was detected with tranquilizers heading the list.

Those arrested often showed symptoms of intoxication such as staggering, slurred speech and irrational behavior, even though tests indicated they weren't drunk.

Even if you're not driving, mixing drugs is hazardous at home when, for example, you're climbing stairs, or a ladder, or working with tools, machinery or sharp kitchen utensils.

But even if you're doing nothing more risky than watching television, remember that drug interactions can be deadly by themselves.

Line Construction National Pension Trust missing Addresses for Participants

Addresses for the following participants are needed by the Fund Administrative Associates to complete their return of contribution mailings. Please send the updated addresses to: Fund Administrative Associates, 1644 Wilshire Boulevard, Los Angeles, California 90017, Attn: Linda Schmitz, Executive Assistant.

J. Ahrendes (561-10-1022)
G. Arivett (563-60-0033)
O. Armand (378-56-4097)
D. Armstead (450-66-3995)
H. Britt (435-36-0021)
F. Brown (526-24-4563)
P. Brown (526-24-4000)
A. Brownell (474-12-1445)
T. Conrad (122-28-5245)
J. Cook (554-86-6648)
J. Crandall (565-60-3518)
R. Curtis (573-92-6610)
D. Davis (551-92-2287)
R. Davis (503-07-8974)
H. De Roche (557-54-6378)
R. Edick (550-84-0075)
J. Edwards (528-46-5722)
L. Erickson (520-44-0180)
P. Frank (559-66-1994)
J. Fransway (572-82-3228)
W. Gildart (549-46-5115)
R. Gleason (565-70-9852)
R. Glover (511-18-6573)
B. Godby (518-30-3321)
E. Grant (359-26-2602)
R. Green, Jr. (433-46-3781)
D. Grove (439-58-9590)
J. Hargrave (320-22-1199)
D. Helps (358-26-9814)
J. Holt (549-24-1730) (1130)
J. Hussey (421-07-3246)
J. Hutchison (438-76-9751)
H. Ingalls (556-30-2769)
J. Jierney (086-32-4659)
F. Keepers (059-48-4908)
L. Keesey (485-36-6154)
J. Kisner (557-72-5330)
J. Kruger (161-30-5089)
W. La Rue (457-09-7170)
R. Lee (567-74-7606)

O. Lemmons (545-12-9988)
P. Loya (562-46-8657)
R. MacDonald (557-22-3611)
S. Marshall (562-82-8109)
J. Martin (465-36-4569)
S. Martin (570-98-0966)
H. Miller (353-24-8544)
M. Millette (549-70-3633)
M. Molstrum (550-10-9913)
D. Mount (098-03-6017)
C. Muncy (525-90-6614)
R. Meyers (459-36-9815)
D. Naron (460-36-4347)
F. Neal (530-38-2152)
T. Nieman (542-44-7077)
B. Oakes (517-42-9247)
H. Pittman (429-74-6203)
H. Pruitt (317-16-6354)
C. Riely (451-24-8483)
H. Rinehammer (401-32-8244)
C. Silverthorn (238-64-7564)
E. Simmons (550-56-1663)
D. Simpson (518-28-3851)
M. Sirkel (530-32-2875)
S. Smedstad (389-20-5092)
H. Smith, Jr. (530-26-9385)
W. Sollars (636-36-2761)
J. Spence (359-28-2409)
L. Sult (365-30-4291)
C. Thomson (369-40-2430)
J. Tierney (086-32-4659)
W. Tinelsy (430-56-8620)
M. Vogt (518-36-2309)
E. Walsh (564-52-4002)
A. Ward (458-12-3867)
E. Ward (238-24-1942)
M. Warrell (327-16-1013)
G. Washington (530-32-2212)
F. Welsh (192-20-8556)
J. Woulfe (337-26-2833)