



# utility reporter

VOL. XXV NO. 1

OAKLAND, CALIFORNIA

JANUARY, 1977

Official Publication of I.B.E.W.  
Local Union 1245, AFL-CIO,  
P.O. Box 4790,  
Walnut Creek, Ca. 94596



## 1977 Local Union Elections

# Notice

Local Union 1245 will comply with all reasonable requests of any bona fide candidate for Local Union office to distribute his campaign literature to the Local Union membership at his expense.

The candidate will also send a request to the mailer (Charles Weidner, Inc., Attention: J. McMullan, 77 Jack London Square, Oakland, CA 94607, phone number: 415/893-8743) accompanied by a cash deposit in an amount equal to the estimated cost of the mailing service. If additional payments are required, the balance will be due on or before the mail is deposited in the Post Office; excess payment will be returned to the candidate. (Additional billing and excess payment returns will be handled by the mailer)

Each month a candidate desires to make a mailing he must notify the Local Union Business Manager he is submitting a request to the mailer. The Business Manager will certify the candidate has been a member in continuous good standing since April 1, 1975 and will then forward a written authorization to the mailer for use of Local 1245's mailing file during that month.

A qualified candidate may make mailings to all members in good standing or to a selected part of the membership. The Local Union's membership list is maintained by computer so any selections of partial membership must be by PG&E Division or Department, Employer, or Local Union office held (Business Representative, Executive Board, Unit Chairman, Unit Recorder, Shop Steward, Grievance Committee, Advisory Council), or home address zip code.

The Local Union file is maintained in social security sequence. Selections of partial membership are generally by division or zip code and it is necessary to sort to the sequence desired before the members are selected. A sort charge and a select charge is almost always associated with any given order for a partial membership mailing.

The normal charges associated with mailings to selected categories of members are:

|                              |                             |
|------------------------------|-----------------------------|
| Sort file (if required)      | \$20.00                     |
| Selection charge             | 10.00                       |
| Self Adhesive Labels         | 9.85 per thousand           |
| Affix Self Adhesive Labels   | 12.75 per thousand          |
| Cheshire Labels              | 6.00 per thousand           |
| Affix Cheshire Labels        | \$12.50 + 8.75 per thousand |
| Deliver to Walnut Creek P.O. | 15.00                       |
| Deliver to Oakland P.O.      | 10.00                       |

The listed charges for affixing labels are based on standard commercial envelopes or post cards. For other mailings (tabloid form, folded newspaper) a sample copy of the mail must be submitted to the mailer for a price quotation. The sample need not have the actual printed materials, but must demonstrate the final physical characteristics (paper, fold, size, etc.).

All orders require a 4 day lead time after receipt by the mailer and must be delivered to the mailing house (669 - 20th Street, Oakland, CA) mail ready. For first class mail the postage must be affixed.

For third class bulk mail, arrangements must be made through the mailer for the use of the mailing house's bulk mail permit and pre-payment of the mailing fees. The mailer will address the pieces and deposit them in the Post Office.

## Update on P.G.&E. Negotiations

Due to the time span between writing, printing, and distribution to members and the day to day changes that can occur in negotiations, reporting on specific items that are currently being discussed is extremely difficult.

In an attempt to inform the affected members on the current status of negotiations tentative agreements reached at the bargaining table on major items will be reported in this article as follows:

An additional holiday which is a floating holiday to be taken between January 1 and July 6 of each year.

Vacation improvements in the sixteenth and seventeenth year of employment the first year of the contract and in the twenty-fourth year the second year of the contract.

The employees' grandparents included in the funeral leave section of the Agreement.

Shift Premium based on 3% of the weighted average for the second shift and 4% of the weighted average for the third shift adjusted annually. The weighted average is obtained by taking the total bargaining unit payroll for Physical and Clerical for one hour and dividing by the total number of employees.

Improvements in the format and content of the Division Demotion and Lay-off Procedure.

The balance of new hires vs. transfers on a continuing basis (currently on a twelve month basis).

A supplemental grievance procedure for General Construction.

Classification wage adjustments for the Rigger, 1723 Pressure Operator, and Technical Clerks.

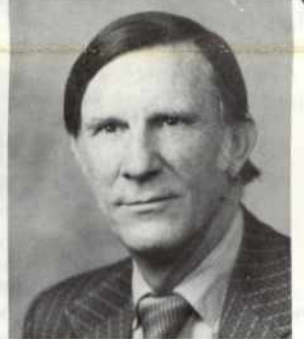
Upon ratification, establishment of a committee to set up apprenticeships in General Construction.

Establishment of the following Interim Committees: Computerized Bidding, Lines of Progression, Pipe Line Operations, and Clerical Wage Structure Committees.

Continued on page two

## YOUR Business Manager's COLUMN

### Inter Union Gas Conference



L. L. MITCHELL

This month 141 delegates from 6 national Unions met in Houston, Texas at the Inter Union Gas Conference. The theme of the Conference was Legislation, Regulation and the Gas Worker.

The separate work shops for service, distribution and clerical workers pointed up the effects of both legislation and regulation which are creating more pressures on the industry and the workers in it. Directives from Public Utility Commissions which dictate work practice changes and denial of negotiated benefits are on the increase. These commissions in looking for ways to maintain lower rates are seeking all ways possible to force companies into reduction of employees. Examples are budget billing on other than a monthly basis, elimination of overtime calls except where gas is leaking, extended periods for meter testing, etc.

Much discussion was held on the present fuel crises which was heightened by the shut off of gas to Dallas while the Conference was in session. It appears that without increased pipe line capacity, improved means of recovery and more discovery of new sources, the gas industry has a limited future.

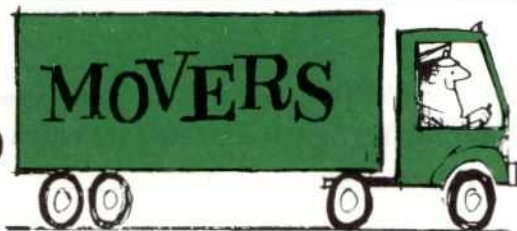
A speaker from Canada, in outlining Canadian energy policy was very blunt in stating that the Canadian Government will be much harder to deal with

than many expect when permits are sought to build a pipe line across Canada to get Alaskan gas into the south 48. He pointed out the disruption to the Canadian economy with an expenditure of 15 billion dollars with only 200 permanent jobs resulting. His statements were that the long run effects were not worth the short run gains. He also made much of the ecological impact on the terrain and the permanent change the construction would cause in the life style and the culture of the Eskimos in Canada.

All in all the general consensus of the delegates was that the future is not bright at the moment for the gas industry. It will require political action to make any major changes and the trade unions, through their membership, did have the best base to influence political decisions.

In the 3rd Century of our United States we must spur our members to greater individual actions in order to gain collective goals. We do have an energy problem and it will require political as well as economic decisions to find a solution. We must exert more influence on our elected representatives in order to force action on a much too long delayed Energy Policy. This to me is not partisan politics, it really becomes the politics of survival.

... HAVE YOU MOVED?



MY NEW ADDRESS IS:

NAME \_\_\_\_\_

STREET \_\_\_\_\_

CITY \_\_\_\_\_ STATE \_\_\_\_\_ ZIP \_\_\_\_\_

SOCIAL SECURITY # \_\_\_\_\_

RETURN TO:

P.O. BOX 4790, WALNUT CREEK, CALIF. 94596

# Recent Settlements

## CITY OF LOMPOC

I.B.E.W. Local 1245 members in Lompoc recently ratified a Memorandum of Understanding with the City of Lompoc. The Memorandum, which has a 3 year term, provides for the following:

### Wages

1. 1977 January 3% Increase, July 3% Increase; 1978 January 3% Increase, July 2.5% Increase; 1979 January 3% Increase, July 2.5% Increase
2. In addition a .5% additional increase for the Electrical Dept. in each of the 6 month periods noted above.

### Benefits

1. Health Insurance - City and Employees will split equally any future increases in the medical insurance premium.
2. City will pay 100% of life insurance premium.
3. City will pay up to \$6.25 for a dental plan for the Employees.

In addition the Memorandum provides for automatic progression for Apprentice Electrical Line Workers, improvements in the overtime and merit increase provisions, and changes in personnel rules.

**CALIFORNIA-PACIFIC UTILITIES COMPANY - South Lake Tahoe - Clerical:** Included in Physical Agreement. Negotiated a maternity clause plus an 8% general wage increase.

### UNITED STATES BUREAU OF RECLAMATION:

6 1/2% general wage increase effective January 2, 1977.

### CITY OF ALAMEDA Bureau of Electricity

One year agreement. 6% general wage increase effective January 18, 1977. No other changes.

# Local 1245 Renews Competitive Scholarship Contest

The Executive Board of Local 1245, IBEW, has announced the ninth annual competitive scholarship contest.

The purpose of this contest is to provide a grant in aid for scholarships to college, thereby making financial assistance available toward the attainment of a higher education.

1. The grant will be as follows: \$250.00 per year for four (4) years, as long as a C (2.0) average is maintained and the parent maintains their membership in good standing in Local Union 1245.
2. In order to be a candidate in this contest, you must be a son or daughter, natural, legally adopted or the legal ward of a member of Local Union 1245. You must also be a high school senior who has graduated or is graduating in 1977. A copy of your diploma or a letter from your high school stating that you will graduate in 1977 must be attached to your scholarship application.
3. The Scholarship Grant will be made only to that candidate who intends to enroll in any college certified by their State Department of Education and accredited by the local Accrediting Association. Applications may be secured by addressing the Recording Secretary of Local Union 1245 or by calling the Union Office or by using the form printed in the Utility Reporter.
4. Checks will be paid directly to the college upon presentation of tuition bills to the Local Union.
5. All applications shall be accompanied with a written essay, not to exceed five hundred (500) words, on the subject "Workers and National Health Insurance".
6. Essays should be submitted on 8 1/2" x 11" paper, on one side, preferably typed and doubled spaced with applicant's written signature at the conclusion of the essay.
7. Applications and essays must be mailed to I.B.E.W. Local Union 1245, P.O. Box 4790, Walnut Creek, California 94596, by registered or certified mail only, and be received no later than 10:00 a.m. on Thursday, March 31, 1977.

## LETTER OF AGREEMENT SUMMARIES

Editor's note: A copy of the full text of these letters is available to the members upon their written request to the Local Union.

### Pacific Gas and Electric Co.

No. 2273 signed 12-22-76

Provides for change of hours of employees in the Division Gas Meter Shops on December 24, 1977 or December 31, 1977.

### Sierra Pacific Power Co.

No. 2257 signed 1-18-77

Provides for inclusion of the Janitor classification in Section 1.1 of the Agreement. It further establishes wages, hours, work schedules and seniority for the Janitor classification.

No. 77-2-SPPC signed 1-20-77

Provides for change of work hours and work days for the two Instrument Technicians at the Tracy Station.

## Update on P.G.&E. Negotiations

### Continued from Page One

A statement which outlines the duties and responsibilities of the Clerical Grade Index Committee needed to accomplish some of the existing grading system.

Both parties are bargaining in the remainder of the unresolved issues in the Agreement with problems being encountered in the areas of Hours, Meals, G. C. Expenses, and G. C. Demotion and Layoff Procedure.

In the Benefit Agreement (Pension, Group Life Insurance, Long Term Disability, and Savings Fund Plans) and the Health and Dental Agreement, your Negotiating Committee is maintaining its position for obtaining meaningful improvements in these Plans. Negotiations are continuing in these areas.

Bargaining is continuing with respect to wages, although PG&E has increased the offer to 6.5% in the first year, together with 5.5% and 4.5% in the second and third years of a three year Agreement.

Watch your bulletin board and attend your local Unit meetings for further information.

### APPLICATION

for  
LOCAL UNION 1245, INTERNATIONAL BROTHERHOOD  
OF ELECTRICAL WORKERS, AFL-CIO, COMPETITIVE  
SCHOLARSHIP CONTEST

Sponsored by

LOCAL UNION 1245, INTERNATIONAL  
BROTHERHOOD OF ELECTRICAL WORKERS, AFL-CIO

P. O. Box 4790  
Walnut Creek, California  
94596

Telephone  
Area Code 415  
933-6060

DATE \_\_\_\_\_

I hereby make application to enter the Competitive Scholarship Contest sponsored by Local Union 1245, I.B.E.W., AFL-CIO:

NAME \_\_\_\_\_ Date of Birth \_\_\_\_\_  
(Last) (First) (Init.)

ADDRESS \_\_\_\_\_ Home  
(Street) (City) (State) (Zip#) Tel. \_\_\_\_\_

NAME OF PARENT \_\_\_\_\_

COMPANY \_\_\_\_\_

WORK LOCATION \_\_\_\_\_

I GRADUATED OR WILL GRADUATE FROM \_\_\_\_\_

HIGH SCHOOL IN \_\_\_\_\_

WHICH IS LOCATED AT \_\_\_\_\_

I EXPECT TO ATTEND \_\_\_\_\_ COLLEGE OR SCHOOL

LOCATION \_\_\_\_\_

\_\_\_\_\_  
(Candidate's Signature)

This is to certify that I am a member in good standing of Local Union 1245, I.B.E.W. and the Candidate, whose name is signed to this application is my \_\_\_\_\_ and will graduate during the term ending \_\_\_\_\_ 1977.

\_\_\_\_\_  
Parent's signature and Card No.



## the utility reporter

Telephone (415) 933-6060



|                  |                  |
|------------------|------------------|
| L. I. MITCHELL   | Executive Editor |
| KENNETH O. LOHRE | Managing Editor  |
| M. A. WALTERS    | Assistant Editor |
| JOHN J. WILDER   | Assistant Editor |
| LAWRENCE N. FOSS | Assistant Editor |

**Executive Board:** Howard Darington, Richard Robuck, Eduardo Vallejo, Katherine Tindall, Warren Manley, James Wilburn and Guy E. Marley.

Published monthly at 1918 Grove Street, Oakland, California 94612. Official publication of Local Union 1245, International Brotherhood of Electrical Workers, AFL-CIO, P.O. Box 4790, Walnut Creek, Ca. 94596. Second Class postage paid at Oakland, California.

**POSTMASTER:** Please send Form 3579, Change of Address, and all correspondence to the Utility Reporter, to P.O. Box 4790, Walnut Creek, Calif. 94596.

Subscription price . . . . . \$1.20 per year Single copies, 10 cents

# Update of Local Union Bylaws

The membership has acted during the January Union meeting, to authorize the printing of Bylaw booklets. The local Union Bylaws have not been corrected since 1970 to include those companies that the Local Union has since organized. In order to have the correct Bylaws for the use of the 1977 Election Committee and to provide information to the members from the newly organized groups, the Executive Board, during its regular January meeting, acted to authorize a request to the International President to update our Bylaws. The resolution adopted reads:

Certain sections of the Local Union Bylaws are out of date and certain technical changes that will not substantially affect the Local Union structure need to be made to update the Local Union Bylaws to conform that document to changes legitimately made over the years as the Local Union utility jurisdiction has changed.

The Executive Board finds that immediate action should be taken to "correct" the Local Union Bylaws prior to April 1977, the month in which the Election Committee is to be appointed, therefore be it

RESOLVED, that Local Union 1245, by Executive Board action, empowers its Local Union Officers to request the International President make the following corrections to the official Local Union Bylaws:

1. To reflect the change in the Local Union Headquarters to Walnut Creek:
  - a. in Article III, Sections 5, 18, 19, and 20 change the name "Oakland" to "Walnut Creek", and
  - b. on the title page and the sheet "Order of Business", change the name "San Francisco" to "Walnut Creek".
2. To change the list of private and public utilities in Article I, Section I(b) to incorporate all private and public agencies currently organized within the territorial jurisdiction of the Local Union.
3. To add to the Executive Board areas the companies organized by the Local Union and not now listed in Article III, Section 4, as follows:
  - a. Southern Area - Add  
11a Merced Irrigation District, 11b Lindmore Irrigation District, 12a City of Lompoc, 12b Teleprompter of Lompoc, 12c Teleprompter of Santa Maria, 12d Monterey Peninsula T.V. Cable, 12e Central California Communications Corporation, 12f Ocean View Cablevision Inc., 15a Teleprompter of Santa Cruz, 15b Teleprompter of Los Gatos
  - b. Central Area - Add  
23a X-Ray Engineering Company, 23b Concord T.V. Cable, 23c Teleprompter of Milpitas, 23d Tele-Vue Systems, Inc., 23e Bay Cablevision, Inc., 23f Teleprompter of Newark, 24b Western T. V. Cable, 25a Turlock Irrigation District, 25b Tri-Dam Project

## Appointments

### Negotiating Committees

CALIFORNIA-PACIFIC UTILITIES - South Lake Tahoe (Clerical): Patti R. Newland

BAY CABLEVISION, INC.: Danny Reza, Leonard Myles

Local Union 1245 - SAFETY COMMITTEE: Steven McCartney - Chairman, Barry Wilson

### Joint Grievance Committees

SIERRA PACIFIC POWER COMPANY: Madeline Cherry and James C. SeEVERS

SAN JOAQUIN DIVISION: Mike Koontz

GENERAL CONSTRUCTION: Donald H. Findley

### Ballot Committee

DAVEY TREE BALLOT COMMITTEE: David H. Docket, Larry Hellman, Thomas J. Ylarraz

## North Coast Comments

Get well wishes to Joe Pence who has been off ill recently. Joe has been an outstanding shop steward over the years and has been instrumental in other members becoming stewards. Brother Pence sets a good example by his actions.

Rich Holmes is the new Recording Secretary for the Fort Bragg Unit (#3717). Again, thanks to Bill Cameron for a job well done.

During the past couple of months Brothers White, Trunnel, Wattenburger, and Pence have performed well while representing fellow members employed in Ukiah District in grievance proceedings.

Local 1245 wishes Guy Yost the very best in his retirement years. Guy has been a member of Local 1245 since 1949.

Local 1245 members are mourning the loss of Brother Tim Melandy. Tim

was involved in a fatal automobile accident on December 31, 1976. Tim had been a member of our local since April of 1972.

Thanks for the time and effort put into Utility Tree negotiations by Kim Lawson. Kim is presently working outside of our jurisdiction.

Reports indicate that the Humboldt Safety Inspection Committees in Humboldt Division did a fine job. Thanks to the members who served on these committees as safety is an ongoing concern of Local 1245 members.

Congratulations to Gerald Butler, Jeff Jacobsen, Randall Bollan, Jon Gier, and Ken McClelland for the receiving the IBEW life saving award. While working in Fortuna, these brothers saved the life of Mr. Archie Cornett. The actions of our brothers are a credit to our local.

c. Northern Area - Add

32a City of Redding, 32b California Pacific Utilities Company - Lassen Division, 33a California Pacific Utilities Company - So. Lake Tahoe Division, 33b Nevada Power Company, Elko Division, 33c Truckee-Donner Public Utility District, 33d Teleprompter of Reno, 33e California Pacific Utilities Company - Winnemucca District, 33f Mount Wheeler Power, Inc., 33g North Bay Cable T.V., 34a Paradise Irrigation District, 34b State T.V. Cable, 35c City of Roseville, 35d Placer County Water Agency, 36b Richvale Irrigation District, 36c Thermolito Irrigation District, 36d Yuba County Water Agency, 36e City of Gridley, 37a City of Healdsburg, 37b Teleprompter of Ukiah, Willits and Fort Bragg, 37c Napa Valley Cable T.V.

d. At-Large - Add

47 Pacific Tree Expert Company, 49a Telephone Construction, 49b CATV Construction

4. To list in Exhibit I those units established and remove those units disestablished pursuant to the Executive Board authority under Article IV, Section I.

5. To list in Article V, Section I, those additional Advisory Council seats created pursuant to the Advisory Council authority under Article V, Section 2, and to delete the seat for Standard Pacific Gas Line Inc., and, since the Local Union no longer represents the employees of the State of California Department of Water Resources, to delete the seat for the State of California Department of Water Resources.

A. Add -

Irrigation Districts, CATV operating companies

B. The following title changes should be made:

21 Central Stores of Purchasing and Stores Department of Pacific Gas and Electric Company should be changed to read: Material Distribution Department of Pacific Gas and Electric Company. 26 City of Alameda should be changed to read: City of Alameda, Bureau of Electricity. 30 Transit Authority of the City of Sacramento should be changed to read: Sacramento Regional Transit District. San Francisco Electronic Data Processing Center of Pacific Gas and Electric Company should be changed to read: Vice President and Comptroller's Office, San Francisco, of Pacific Gas and Electric. Frank L. Nolan Tree Surgery Company, Utility Tree Service Company and Davey Tree Surgery Company, Ltd. should be deleted and the designation "Tree Trimmer Companies" substituted.

C. Remove -

20 Standard Pacific Gas Line Inc.

### LOCAL UNION 1245 AND CITY OF SANTA CLARA REACH AGREEMENT

On December 23, 1976, Local 1245 members employed with the City of Santa Clara ratified the results of bargaining between the Union's and City's negotiating committees. The new settlement provides for a three year agreement with improvements in wages, benefits and working conditions during the term of the agreement.

Highlights of the settlement provide for a 7.5% wage increase in the first year with protection on wages and fringe benefits in the 2nd and 3rd years based upon total compensation improvements in comparing agencies: City to pay 100% of Kaiser and Blue Cross hospital plan premiums; one

additional holiday of Friday after Thanksgiving which makes a total of 12 1/2 holidays a year for our members; establishment of an apprentice electricians training program; establishment of quarterly Joint Management and Shop Stewards meetings; mileage allowance increase to 15¢ a mile.

Local 1245 negotiating committee consisted of employee members Robert Blankenship, Richard Murphy, Pat Greco, Robert Gehrke and Business Representative Orv Owen under the guidance of Senior Asst. Business Manager Mert Walters and Business Manager L. L. Mitchell.

## Bargaining Roundup

### IN NEGOTIATIONS:

Bay Cablevision, Inc.; California-Pacific Utilities Company - Joint Benefit Agreement; Davey Tree Surgery Company; Napa Valley CATV; Nevada Irrigation District; Ocean View Cablevision, Inc.; Oroville-Wyandotte Irrigation District; Pacific Gas & Electric Company (Physical and Clerical); Pacific Gas Transmission; Pacific Tree; Standard Pacific Gas Line, Inc.; Tri-Dam Project; Utility Tree Service, and City of Roseville.

### NOTICE TO NEGOTIATE:

Nevada Power Company and Central California Communications Corporation.

### INTERIM NEGOTIATIONS:

**BUILDING DEPARTMENTS TRAINING COMMITTEE:** Negotiations nearly completed. Last meeting was held on January 11, 1977.

**SIERRA PACIFIC POWER COMPANY:** Interim negotiations on Power Production Department to be commenced in the near future.

### REJECTIONS

**PLACER COUNTY WATER AGENCY:** Members employed by Placer County Water Agency unanimously rejected Agency's latest offer of 6% general wage increase; holiday swap - Election Day for day after Thanksgiving; no change in fringes; however, if medical increases, Agency will pay \$43.22; Agency Staff to have draft of Employee Handbook available by June 30, 1977; revised grievance procedure clarifying use of arbitration. Rejected primarily on basis of wage offer - seeking parity with PG&E. No further meetings scheduled.

# 1977 - Attend your Local 124

## San Joaquin

|      |  |                             |                        | Feb | Mar | Apr | May | June |
|------|--|-----------------------------|------------------------|-----|-----|-----|-----|------|
| 1111 | FRESNO<br>Eagles Hall<br>1528 Van Ness                 | Chairman:<br>G. Bayless     | Tuesday<br>7:30 p.m.   | 1   | 1   | 5   | 3   | 7    |
| 1112 | BAKERSFIELD<br>Central Labor Council<br>200 W. Jeffrey | Chairman:<br>R. Foxe        | Thursday<br>7:30 p.m.  | 10  | 10  | 14  | 12  | 9    |
| 1113 | MADERA<br>Malik's Lounge<br>427 So. Gateway            | Chairman:<br>R. Hatcher     | Thursday<br>7:30 p.m.  | 3   | 3   | 7   | 5   | 9    |
| 1116 | CORCORAN<br>Club Room<br>901 Chittonden                | Chairman:<br>F. Torres      | Thursday<br>7:30 p.m.  | 17  | 17  | 21  | 19  | 23   |
| 1117 | WASCO<br>Power Club<br>1101 12th St.                   | Chairman:<br>T. Caterlin    | Wednesday<br>7:00 p.m. | 9   | 9   | 13  | 11  | 8    |
| 1118 | CRANE VALLEY<br>Power House<br>#2 Office               | Chairman:<br>E. Prindiville | Thursday<br>7:30 p.m.  | 10  | 10  | 14  | 12  | 16   |
| 1119 | BALCH<br>Power House                                   | Chairman:<br>R. Bugg        | Tuesday<br>6:30 p.m.   | 15  | 15  | 19  | 17  | 21   |
| 1120 | SELMA<br>Masonic Lodge<br>2012 High                    | Chairman:<br>R. Clark       | Wednesday<br>5:00 p.m. | 2   | 2   | 6   | 4   | 1    |
| 1121 | COALINGA<br>Power Club<br>Jayne & Merced Ave.          | Chairman:<br>E. C. Lucero   | Wednesday<br>7:30 p.m. | 16  | 16  | 20  | 18  | 22   |
| 1123 | MERCED<br>Pine Cone Coffee Shop<br>2000 E. Childs      | Chairman:<br>N. S. Covert   | Tuesday<br>7:30 p.m.   | 8   | 8   | 12  | 10  | 14   |
| 1124 | LOS BANOS<br>Fireman's Hall<br>520 "J" Street          | Chairman:<br>F. Wright      | Wednesday<br>7:30 p.m. | 9   | 9   | 13  | 11  | 8    |

## Coast Valleys

|      |  |                          |                        | Feb | Mar | Apr | May | June |
|------|--|--------------------------|------------------------|-----|-----|-----|-----|------|
| 1219 | HOLLISTER<br>Paines Restaurant<br>421 East                         | Chairman:<br>T. Thompson | Monday<br>7:00 p.m.    | 7   | 7   | 4   | 2   | 6    |
| 1211 | SALINAS<br>American Legion Hall<br>14 W. Laurel Drive              | Chairman:<br>J. Smith    | Tuesday<br>8:00 p.m.   | 8   | 8   | 5   | 3   | 7    |
| 1212 | MONTEREY<br>Carpenters Hall<br>778 Hawthorne                       | Chairman:<br>M. Vela     | Wednesday<br>7:00 p.m. | 9   | 9   | 6   | 4   | 8    |
| 1214 | MOSS LANDING<br>Odd Fellows Hall<br>17 A East Beach<br>Watsonville | Chairman:<br>R. Erbe     | Thursday<br>8:00 p.m.  | 10  | 10  | 7   | 5   | 9    |
| 1218 | LOMPOC<br>514 South I Street                                       | Chairman:<br>J. Centeno  | Monday<br>7:30 p.m.    | 14  | 14  | 11  | 9   | 13   |
| 1217 | PASO ROBLES<br>Elks Lodge<br>1420 Park Street                      | Chairman:<br>Jess Armas  | Tuesday<br>7:00 p.m.   | 15  | 15  | 12  | 10  | 14   |
| 1215 | SAN LUIS OBISPO<br>Elks Lodge<br>222 Elk Lane                      | Chairman:<br>A. Moore    | Wednesday<br>8:00 p.m. | 16  | 16  | 13  | 11  | 15   |
| 1216 | SANTA MARIA<br>Vandenberg Inn<br>1316 So. Broadway                 | Chairman:<br>J. Herrmann | Thursday<br>8:00 p.m.  | 17  | 17  | 14  | 12  | 16   |

## Pipe Line

|      |   |                         |                        | Feb | Mar | Apr | May | June |
|------|---|-------------------------|------------------------|-----|-----|-----|-----|------|
| 1311 | BARSTOW<br>Desert Inn<br>25210 West Main St.<br>Barstow | Chairman:<br>W. Blevins | Thursday<br>4:45 p.m.  | 3   | 3   | 7   | 5   | 2    |
| 1312 | NEEDLES<br>Employees Club Room<br>C.P.U. Service Center | Chairman:<br>A. Frazier | Wednesday<br>5:15 p.m. | 2   | 2   | 6   | 4   | 1    |

## San Jose

|      |   |                             |                        | Feb | Mar | Apr | May | June |
|------|---|-----------------------------|------------------------|-----|-----|-----|-----|------|
| 1501 | SAN JOSE CLERICAL<br>Clover Hall<br>99 N. Bascom                    | Chairman:<br>Barbara Symons | Thursday<br>8:00 p.m.  | 3   | 3   | 7   | 5   | 2    |
| 1511 | SAN JOSE<br>Clover Hall<br>99 N. Bascom                             | Chairman:<br>Percy Rome     | Tuesday<br>8:00 p.m.   | 15  | 15  | 19  | 17  | 21   |
| 1512 | BELMONT<br>Good Shepherd Hall<br>1336 5th Avenue                    | Chairman:<br>J. Morgan      | Wednesday<br>8:00 p.m. | 9   | 9   | 13  | 11  | 8    |
| 1513 | SANTA CRUZ<br>Arion Hall<br>230 Plymouth St.                        | Chairman:<br>R. L. Thomson  | Tuesday<br>8:00 p.m.   | 8   | 8   | 12  | 10  | 14   |
| 1514 | SAN JOSE AREA - GENERAL CONSTRUCTION<br>Clover Hall<br>99 N. Bascom | Chairman:<br>Bill Twohey    | Tuesday<br>8:00 p.m.   | 1   | 1   | 5   | 3   | 7    |

## East Bay

|      |   |                            |                        | Feb | Mar | Apr | May | June |
|------|---|----------------------------|------------------------|-----|-----|-----|-----|------|
| 2301 | EAST BAY CLERICAL<br>Golden Gate Lanes<br>El Cerrito                                  | Chairman:<br>N. Thompson   | Tuesday<br>5:30 p.m.   | 15  | 15  | 19  | 17  | 21   |
| 2311 | OAKLAND<br>Edgewater-Hyatt House<br>455 Hegenberger Road                              | Chairman:<br>R. Sherbourne | Tuesday<br>5:00 p.m.   | 1   | 1   | 5   | 3   | 7    |
| 2312 | EAST BAY AREA - GENERAL CONSTRUCTION<br>Edgewater-Hyatt House<br>455 Hegenberger Road | Chairman:<br>R. Brewer     | Wednesday<br>5:30 p.m. | 9   | 9   | 13  | 11  | 8    |
| 2314 | HAYWARD<br>Elegant Ranch<br>22865 Atherton  | Chairman:<br>J. Obermeyer  | Wednesday<br>8:00 p.m. | 9   | 9   | 13  | 11  | 8    |
| 2315 | LIVERMORE<br>Eagles' Hall<br>525 N. Livermore Ave.                                    | Chairman:<br>J. Donahue    | Thursday<br>7:30 p.m.  | 3   | 3   | 7   | 5   | 2    |
| 2316 | CONCORD<br>I.B.E.W. Hall<br>Pacheco   | Chairman:<br>R. K. Hoyer   | Thursday<br>8:00 p.m.  | 10  | 10  | 14  | 12  | 9    |
| 2317 | ANTIOCH<br>Antioch Women's Club<br>509 "G" Street                                     | Chairman:<br>P. Nelson     | Tuesday<br>8:00 p.m.   | 8   | 8   | 12  | 10  | 14   |

## San Francisco

|      |   |                             |                        | Feb | Mar | Apr | May | June |
|------|---|-----------------------------|------------------------|-----|-----|-----|-----|------|
| 2401 | SAN FRANCISCO CLERICAL<br>Sheraton Palace Hotel<br>Market &<br>New Montgomery | Chairman:<br>S. Butera      | Wednesday<br>5:30 p.m. | 9   | 9   | 13  | 11  | 8    |
| 2412 | SAN FRANCISCO<br>War Memorial Center<br>6655 Mission Street<br>Daly City      | Chairman:<br>R. Fitzsimmons | Wednesday<br>7:30 p.m. | 2   | 2   | 6   | 4   | 1    |

## Stockton

|      |   |                          |                        | Feb | Mar | Apr | May | June |
|------|---|--------------------------|------------------------|-----|-----|-----|-----|------|
| 2513 | JACKSON<br>Carpenter's Hall<br>1/2 Mi. S. Hwy. 49<br>Sutter Creek | Chairman:<br>R. Swett    | Tuesday<br>7:00 p.m.   | 1   | 1   | 5   | 3   | 7    |
| 2512 | ANGELS CAMP<br>Veteran's Building<br>Main Street                  | Chairman:<br>N. Hewett   | Wednesday<br>5:00 p.m. | 2   | 2   | 6   | 4   | 1    |
| 2511 | STOCKTON<br>I.B.E.W. #591 Hall<br>427 W. Fremont                  | Chairman:<br>F. Prescott | Thursday<br>7:00 p.m.  | 3   | 3   | 7   | 5   | 2    |
| 2517 | SONORA<br>I.O.O.F. Hall   | Chairman:<br>W. Algeo    | Tuesday<br>7:30 p.m.   | 8   | 8   | 12  | 10  | 14   |
| 2515 | MODESTO<br>Sundial Lodge*<br>808 McHenry                          | Chairman:<br>J. Simmons  | Wednesday<br>7:30 p.m. | 9   | 9   | 13  | 11  | 8    |
| 2516 | LODI<br>Sr. Citizen's Hall<br>113 N. School Street                | Chairman:<br>A. Goehring | Thursday<br>7:30 p.m.  | 10  | 10  | 14  | 12  | 9    |
| 2514 | TRACY<br>Norm's Pizza Parlor<br>2227 Tracy Blvd.                  | Chairman:<br>C. Schleiss | Tuesday<br>5:00 p.m.   | 15  | 15  | 19  | 17  | 21   |

\*Check Lobby for Room No.

# 5, IBEW Unit Meeting! - 1977

## Humbolt

|      |  |                           | Feb                   | Mar | Apr | May | June  |
|------|--|---------------------------|-----------------------|-----|-----|-----|-------|
| 3111 | EUREKA<br>Veterans' Memorial Bldg<br>10th & H Streets  | Chairman:<br>H. Darington | Tuesday<br>7:30 p.m.  | 15  | 15  | 12  | 10 14 |
| 3112 | GARBERVILLE-WEOTT<br>Veterans' Hall<br>Conger & Locust | Chairman:<br>C. R. Gordon | Thursday<br>5:00 p.m. | 17  | 17  | 14  | 12 16 |

## Shasta

|      |   |                           | Feb                   | Mar | Apr | May | June  |
|------|---|---------------------------|-----------------------|-----|-----|-----|-------|
| 3212 | REDDING<br>Hospitality House<br>532 N. Market     | Chairman:<br>R. M. Hafner | Tuesday<br>7:30 p.m.  | 1   | 1   | 5   | 3 7   |
| 3211 | RED BLUFF<br>Elks Lodge #1250<br>355 Gilmore Road | Chairman:<br>H. Iness     | Thursday<br>7:30 p.m. | 3   | 3   | 7   | 5 9   |
| 3216 | TRINITY<br>New York Hotel<br>Weaverville          | Chairman:<br>L. Wells     | Tuesday<br>7:30 p.m.  | 8   | 8   | 12  | 10 14 |
| 3213 | BURNEY<br>Woodworker's Hall                       | Chairman:<br>A. L. Beebe  | Thursday<br>7:30 p.m. | 10  | 10  | 14  | 12 16 |

## De Saba

|      |   |                              | Feb                    | Mar | Apr | May | June  |
|------|---|------------------------------|------------------------|-----|-----|-----|-------|
| 3412 | QUINCY<br>PG&E Service Ctr                  | Chairman:<br>Dave Ostrander  | Monday<br>7:30 p.m.    | 7   | 7   | 11  | 9 13  |
| 3417 | PARADISE<br>Vet. Mem. Bldg.<br>Skyway       | Chairman:<br>G. E. Van Buren | Tuesday<br>7:30 p.m.   | 8   | 8   | 12  | 10 14 |
| 3411 | CHICO<br>Retail Clks Hall<br>1st & Sheridan | Chairman:<br>H. R. Arbuckle  | Wednesday<br>7:30 p.m. | 9   | 9   | 13  | 11 15 |

## Drum

|      |  |                           | Feb                    | Mar | Apr | May | June  |
|------|--|---------------------------|------------------------|-----|-----|-----|-------|
| 3511 | AUBURN<br>Moose Lodge<br>Sacramento & High Sts<br>250 Sacramento St.<br>Auburn | Chairman:<br>P. Harrigan  | Tuesday<br>7:30 p.m.   | 15  | 15  | 19  | 17 14 |
| 3513 | GRASS VALLEY<br>Loyal Order of Moose<br>698 Whiting Street<br>Grass Valley     | Chairman:<br>R. M. Butler | Wednesday<br>7:30 p.m. | 16  | 16  | 20  | 18 15 |
| 3512 | ROSEVILLE<br>Moose Lodge<br>506 Lincoln St.<br>Roseville                       | Chairman:<br>K. Hicks     | Monday<br>7:30 p.m.    | 21  | 21  | 18  | 16 20 |

## Colgate

|      |   |                             | Feb                  | Mar | Apr | May | June  |
|------|---|-----------------------------|----------------------|-----|-----|-----|-------|
| 3611 | MARYSVILLE<br>212 Bridge St.<br>Yuba City | Chairman:<br>Larry Casserly | Tuesday<br>5:30 p.m. | 15  | 15  | 19  | 17 21 |

## North Bay

|      |  |                              | Feb                    | Mar | Apr | May | June  |
|------|--|------------------------------|------------------------|-----|-----|-----|-------|
| 3712 | SANTA ROSA<br>Labor Center<br>1706 Corby Avenue<br>Santa Rosa Ave.<br>Off Ramp | Chairman:<br>C. R. Morgan    | Tuesday<br>8:00 p.m.   | 1   | 1   | 5   | 3 7   |
| 3714 | UKIAH<br>Ukiah Grange<br>South State   | Chairman:<br>W. C. Teach     | Thursday<br>8:00 p.m.  | 10  | 10  | 7   | 5 9   |
| 3716 | NAPA<br>Pancake House<br>Soscol Avenue   | Chairman:<br>Wm. B. Balsley  | Tuesday<br>8:00 p.m.   | 8   | 8   | 12  | 10 14 |
| 3717 | FORT BRAGG-PT. ARENA<br>Presbyterian Church<br>Pine and Main<br>Fort Bragg     | Chairman:<br>D. C. McDonnell | Wednesday<br>5:00 p.m. | 9   | 9   | 6   | 4 8   |
| 3711 | MARIN COUNTY<br>Sams<br>209 Third St.<br>San Rafael                            | Chairman:<br>Al Simontacchi  | Thursday<br>7:30 p.m.  | 10  | 10  | 14  | 12 16 |

## Sacramento

|      |  |                         | Feb                  | Mar | Apr | May | June |
|------|--|-------------------------|----------------------|-----|-----|-----|------|
| 3811 | SACRAMENTO<br>Dante Club<br>2330 Fair Oaks Blvd. | Chairman:<br>G. Johnson | Tuesday<br>7:30 p.m. | 1   | 1   | 5   | 3 7  |

## Sacramento - Continued

|      |   |                           | Feb                    | Mar | Apr | May | June  |
|------|---|---------------------------|------------------------|-----|-----|-----|-------|
| 3812 | VACAVILLE<br>Chamber of Commerce<br>400 Monte Vista Street          | Chairman:<br>R. Spencer   | Thursday<br>7:00 p.m.  | 10  | 10  | 14  | 12 9  |
| 3813 | PLACERVILLE<br>Round Table Pizza<br>512 Main Street                 | Chairman:<br>W. Tomlinson | Wednesday<br>5:00 p.m. | 2   | 2   | 6   | 4 1   |
| 3815 | DAVIS G. C.<br>Club Room<br>Veterans Mem. Ctr.<br>203 East 14th St. | Chairman:<br>R. Hornbeck  | Wednesday<br>7:00 p.m. | 16  | 16  | 20  | 18 15 |

## Irrigation Districts

|      |   |                        | Feb                  | Mar | Apr | May | June  |
|------|---|------------------------|----------------------|-----|-----|-----|-------|
| 1122 | MERCED IRRIGATION DISTRICT<br>Pine Cone Coffee Shop<br>2000 E. Childs | Chairman:<br>Wm. Soito | Tuesday<br>7:30 p.m. | 15  | 15  | 19  | 17 21 |

## Sierra Pacific

|      |   |                         | Feb                  | Mar | Apr | May | June  |
|------|---|-------------------------|----------------------|-----|-----|-----|-------|
| 3311 | RENO<br>Carpenter's Hall<br>1150 Terminal Way | Chairman:<br>R. Tanberg | Tuesday<br>7:30 p.m. | 1   | 1   | 5   | 3 7   |
| 3315 | ELY<br>Mt. Wheeler<br>Various                 | Chairman:<br>J. Thomas  | Tuesday<br>7:30 p.m. | 8   | 8   | 12  | 10 14 |

## Public Agencies

|      |  |                             | Feb                                   | Mar | Apr | May | June  |
|------|--|-----------------------------|---------------------------------------|-----|-----|-----|-------|
| 1411 | CITY OF SANTA CLARA<br>Clover Hall<br>99 N. Bascom                             | Chairman:<br>R. Blankenship | Thursday<br>8:00 p.m.                 | 10  | 10  | 14  | 12 9  |
| 2211 | OAKLAND GENERAL<br>Edgewater-Hyatt House<br>455 Hegenberger Road               | Chairman:<br>H. Dederman    | Thursday<br>5:00 p.m.                 | 10  | 10  | 14  | 12 9  |
| 3011 | SACRAMENTO REGIONAL<br>TRANSIT DISTRICT<br>1412 21st Street<br>Sacramento      | Chairman:<br>J. Rodgers     | Wednesday<br>3:00 p.m. &<br>4:45 p.m. | 9   | 9   | 13  | 11 8  |
| 3911 | SACRAMENTO MUNICIPAL<br>UTILITY DISTRICT<br>Dante Club<br>2330 Fair Oaks Blvd. | Chairman:<br>R. Daugherty   | Wednesday<br>5:00 p.m.                | 2   | 2   | 6   | 4 1   |
| 3912 | FRESH POND - (SMUD)<br>Round Table Pizza<br>512 Main Street<br>Placerville     | Chairman:<br>J. Noble       | Tuesday<br>7:30 p.m.                  | 8   | 8   | 12  | 10 14 |
| 3913 | RANCHO SECO (SMUD)<br>Kehoe School<br>Hw. 104 at Harold                        | Chairman:<br>D. Brown       | Tuesday<br>5:00 p.m.                  | 15  | 15  | 19  | 17 21 |

## Pacific Gas Transmission

|      |  |                           | Feb                    | Mar | Apr | May | June |
|------|--|---------------------------|------------------------|-----|-----|-----|------|
| 3023 | WALLA WALLA<br>Touchet Fire Station                              | Chairman:<br>O. D. Reiber | Wednesday<br>7:00 p.m. | 9   | 9   | 13  | 11 8 |
| 3024 | REDMOND<br>86 Corral Club<br>Stockman's Room<br>North 6th Street | Chairman:<br>T. Touchon   | Thursday<br>7:00 p.m.  | 10  | 10  | 14  | 12 9 |
| 3021 | SANDPOINT<br>Traveler's Hotel                                    | Chairman:<br>W. Miller    | Wednesday<br>7:00 p.m. | 9   | 9   | 13  | 11 8 |

## Citizens Utilities

|      |  |                           | Feb                    | Mar | Apr | May | June  |
|------|--|---------------------------|------------------------|-----|-----|-----|-------|
| 4012 | SUSANVILLE<br>Grand Cafe<br>Main Street        | Chairman:<br>W. McDonald  | Wednesday<br>7:30 p.m. | 2   | 2   | 6   | 4 8   |
| 4013 | ALTURAS<br>Benny's<br>1200 W. 4th              | Chairman:<br>E. Seminario | Tuesday<br>6:30 p.m.   | 1   | 1   | 5   | 3 7   |
| 4014 | ELK GROVE<br>Pizza Barn<br>8610 Elk Grove Blvd | Chairman:<br>S. Gunnells  | Wednesday<br>5:30 p.m. | 16  | 16  | 20  | 18 22 |
| 4015 | BURNEY - C.U.C.C.<br>Woodworker's Hall         | Chairman:<br>F. Crow      | Thursday<br>5:30 p.m.  | 10  | 10  | 14  | 12 16 |

## Trees

|      |   |                            | Feb                    | Mar | Apr | May | June |
|------|---|----------------------------|------------------------|-----|-----|-----|------|
| 4411 | DAVEY TREE - LAS VEGAS<br>I.B.E.W. Hall<br>4321 E. Bonanza Road | Chairman:<br>C. A. Davison | Wednesday<br>7:30 p.m. | 2   | 2   | 6   | 4 1  |

# HELP! WE NEED SOME ADDRESSES

**EDITOR'S NOTE:** Listed below are the names of our members for whom we have no address. We are asking you to look for your division or employer group and then check to see if you find someone you know. If you find a familiar name, please contact the person and tell them to send us his or her address and please include their Social Security number.

It is very important that we have a current address on all of the members so that when we send out urgent notices or ballots, each member will receive the necessary information. Communications with the membership is an area in which we are trying to make improvements, but we must have your address as a start.

We suggest that someone in each headquarters post this list of names on union's side of the bulletin board.

If you know of a person's address, but can't contact them to have them send in their new address, please send us the address yourself.

**SAN JOAQUIN-Clerical**  
AMELIA M. BARBOZA  
ROBERT K. CHOW  
DEANNA R. FERRETTI  
LARRY FRISBY  
JAMES S. GREYDANUS  
EDDIE NYE  
C. J. RAILS  
JAMES WILSON

**SAN JOAQUIN-Physical**  
RAYMOND BEHILL  
GLEN A. CARSSSEN  
RUSSELL FRITH  
KEITH H. GINSBURG  
JAMES HERRERA JR  
WENDELL HUGHES  
DAVID W. LEHMAN  
RICHARD LUJAN  
MICHAEL MONROE  
JAMES R. MOORE  
AUBREY B. MORGAN  
MICHAEL E. PARSONS  
C. H. WINN  
TIM WRIGHT

**MERCED IRRIGATION DISTRICT**  
DOYLE W. MAY  
EUGENE E. TURLIS

**COAST VALLEYS-Physical**  
FERNANDO ARTALEJO  
ANTONIO BARRAZA  
HAROLD W. CONNERLY  
ART CORDOBA  
R. T. GRANADOS  
W. D. JONES  
CHRIS N. LOPEZ  
DAVID R. LOPEZ  
THOMAS A. LOPEZ  
V. MANTE JR  
J. V. MARES  
A. M. OBESO  
A. M. OLESO  
D. M. QUESADA  
G. E. SHIEHIDO  
DANIEL SHIGEMASA  
G. STONE  
RICHARD L. SUMABAT  
JOHNNIE THOMAS JR  
GARY WHITTAKER

**CITY OF LOMPOC**  
RAUL GONZALEZ

**TELEPROMPTER OF LOMPOC**  
RON CABRERA

**MONTEREY PENINSULA TV**  
JOHN T. FLAHERTY  
KEITH L. SIMI

**CENTRAL CAL. COMM.**  
LOWELL W. DUNLAP  
WAYNE D. POWERS  
CRAIG A. RENFROW

**OCEAN VIEW TV**  
TERRY LINEBARGER

**PIPELINE OPERATIONS**  
HARVEY KELLER

**CITY OF SANTA CLARA**  
STEPHEN ADAMS  
RAMIRO AGUERO

**SAN JOSE-Clerical**  
BETTY ALDAMA  
CINDY BAXTER  
BEVERLY L. BELL  
CLARK BOMAGAT  
RICHARD A. BORBA  
LINDA L. CHANGRAS  
DIANE G. ECKHART  
VICKY L. FAILING  
JOSE HERNANDEZ

**SAN JOSE-Clerical (cont.)**  
EDWARD H. LOPEZ  
BEVERLY A. MCBEE  
RONALD J. RODRIGUEZ  
PHILLIP D. SHINN  
DONALD E. SKINNER

**SAN JOSE-Physical**  
DANIEL J. AVILA  
ALBERT BELTRAN  
WILLIAM BULLARD  
LLOYD M. CHAVEZ  
LEWIS J. CIRILLO  
JEFFREY A. CLARR  
PAUL COLVIN  
ROBERT E. FLAHERTY  
H. W. HARDY  
MUSTAFA KHALIL  
DELMA LEWIS  
TIM MCCARTHY  
MARIO MOISE  
JOHN M. ONTIVEROS  
DONALD OROPEZA  
RICHARD L. PARRY  
BART O. POST  
JOSEPH J. RODRIGUEZ  
WILLIAM E. ROTTER  
BARRY SHIELDS  
DENNIS D. SILACCI  
JOSEPH SOZA  
JAMES W. VAUGHAN  
OREN L. WELLS  
GARY B. WONG  
LARRY A. YOUNG

**TELEPROMPTER-SANTA CRUZ**  
KAREN G. MCCOLLUM  
DAN PEREZ  
MANUEL VALENZUELA

**MATERIALS DISTRIBUTION**  
MICHAEL ANDERSON  
LARRY BROUSSARD  
STEVEN L. JONES  
JOHN O BRIEN  
DICK RICHARDS  
WM YOUNG

**EAST BAY-Clerical**  
ANGELINE ABEL  
LARRY R. ALEXANDER  
GWENDOLYN ARNOLD  
BETTY L. BORDER  
KEN BRISTOL  
CONNIE J. DILLINGHAM  
JEREL DUKES  
LUCIUS S. GETWOOD  
WILLIE J. GRAHAM  
HARVEY LASHON  
KAY I. LOBO  
FERNE L. MACHI  
DIANNE MATTHEWS  
E. M. MCKINLEY JR  
DELORIS NEWSOME  
CLAUDE SHIPP  
G. C. TAYLOR  
MICHAEL WARD

**EAST BAY-Physical**  
K. D. ADKINS  
DAVID ALTSCHER  
MARK S. AUGUSTIN  
DALLAS BARNES  
H. R. BIANCALANA  
DAVID BOETTCHER  
RONALD BRAATEN  
ROBERT O. BRANCHE  
RICHARD BRATCHER  
FINNARD BROWN  
MIKE BRUNO  
JACK BYRD  
FREDRICK COMBS  
MAJOR COOPER  
STEPHEN COZZI  
DANIEL DALY  
J. L. DAME  
F. W. DEMAREST

**EAST BAY-Principal (cont.)**  
JIMMIE DIAZ  
EDGAR DUNCAN  
DON T. ERICKSEN  
GEORGE T. FARMOS  
LEONARD M. FIELDING  
DONALD A. FIELDS  
KENNETH L. FOUNTAIN  
ROBERT S. GARCIA  
P. E. GILMORE  
E. B. GODDARD  
GARY GRAY  
RUDY GREEN  
KENNETH GRIMES  
ARNOLD HORN  
BRUCE W. HOSKINS  
ART IGLESIAS  
SAM JOHNSON JR  
CRAIG JOSEPH  
R. M. KALSBECK  
CLINT E. KEMP  
DAN KILBY  
ARTHUR L. KYLES JR  
CARL G. LEWIS  
CLIFFORD LOPES  
FELIX G. LOPEZ  
GARY DI MARINO  
DAVID A. MARTIN  
RICHARD MARTIN  
JIMMIE MATTHEWS  
O. D. MCGEE  
JOE P. MCKELVY JR  
DAVID C. MCLEMORE  
STAN MELLOR  
ALAN MENDONSA  
ANDREW C. MILLER  
ROY MOORE  
INGA MOUNTAIN  
MICHAEL J. MYERS  
GENE W. NELSON  
RAFAEL E. NODAL  
DELIA OLSEN  
KENNETH PENN  
JAMES R. PURNELL  
FRANK R. RAMIREZ  
GEORGE P. RIOS  
J. H. ROLLINS  
ROBERT ROSS  
HORACE J. RUSSO JR  
DENNIS R. RYAN  
GARY SMITH  
ROBERT G. SPENCER  
ARTHUR SPIKES  
PETER J. STASIAK  
NEIL STERUD II  
DANIEL H. SULLIVAN  
SUTLIFF  
EUGENE TEDDER  
CRAIG M. TITUS  
WM E. TUCKER  
T. L. TYLER  
W. G. WALLACE  
PATRICK J. WELCH  
MICHAEL P. WHITE  
RONALD WHITE  
A. P. WISCHMAN  
ROBBY D. WOODS

**X-RAY ENGINEERING**  
WILLIAM CHICK  
STEVEN R. TAVIS

**CONCORD TV CABLE**  
WILLIAM AMENT

**SAN FRANCISCO-Clerical**  
DENNIS W. BOYD  
BARBARA DAWSON  
ROBERT V. DEAN JR  
JORGE A. DURAN  
JULIE FAUSTINO  
ANNA M. GARCIA  
FRANK R. GRIFFIN  
DONALD L. HANGEN  
JANET LUCIDO  
RITA MORENO  
VALERIE OTTOBONI

**SAN FRANCISCO-Clerical (cont.)**  
WALTER RHODES  
RALPH G. SALINAS  
MARGARITA SERRANO

**SAN FRANCISCO-Physical**  
ARTHUR E. AGUILAR  
RAYMOND C. ANDERSON  
HURCHELL ATKINSON  
HUEY P. BATTISTE  
RODNEY R. BLAYLOCK  
ERNEST A. BUTLER  
JAMES CARLIN  
DOUGLAS M. CHANG  
LAWRENCE CHING  
JAMES COYNE  
HAROLD G. DACUS JR  
FULVIO G. DAPAS  
PAUL S. DAVIS  
LARRY DELATORRE  
JOHN M. DONOHOE  
KATHLEEN DUSEK  
JAMES L. EDWARDS  
ROBERT FLORES  
EDWARD FRENCH  
JAMES W. GORHAM  
DENNIS T. GOULDING  
ANDY L. GUETEBIER  
HENRY L. HICKS  
LEVI HILL  
THOMAS JACOBSON  
LAWRENCE JEONG  
JEFFREY KEY  
KYI LEONG  
LARRY D. MACK  
MARIO MARTINEZ  
DOMINICK MENDEZ JR  
J. M. MULLIGAN  
LEO MYERS  
J. OGRADY  
CLAYTON OGURKO  
BOBBY R. PATTON  
FREDERICK PEDERSEN  
ANTONIO R. PEREZ  
MICHAEL RIEL  
JOE ROZA  
STEPHAN L. SANDERS  
PAUL E. SIGMUND  
STANLEY SINGH  
ROBERTO J. TORRES  
A. Y. VALENZUELA  
DAVID H. WASHINGTON  
JOSEPH E. WATTS  
CHARLES E. WILLIAMS  
HOWARD WILLIAMS  
SU YANG  
CHUNG A. YU

**GENERAL OFFICE-Clerical**  
G. BRUSUELAS  
MARION F. CHIN  
WINFRIED FISCHER  
VICKI J. FLORENCE  
SUE ELLEN FOULON  
O. GOODMAN  
ROMEC A. GOTERA  
CHERYL HAY  
J. M. HENRY  
CLARITA P. HOGANAS  
KATHLEEN HUGHES  
CARL HUNTER  
MARY JOHNSON  
ALEJANDRA JUNIO  
FRED KRUEGES  
EMELITA LEONARDO  
DOREEN LIETEAU  
ARTHUR MALONE  
MARIA D. MARTIR  
JEFFREY MORRIS  
CINDY NARANJO  
JUDITH NAVALES  
PATRICIA OZORIO  
ALDEN PAEZ  
NENITA PLACIDO  
JEAN SALLADAY  
JOHN P. SEVERA  
CRISENIA SIGUA  
LYNN M. SONDRÉE  
WILLIE B. STEVENSON  
EDGARDO P. USTARIS  
LETICIA M. VIRAY  
PRIMITIVA VIRAY  
GAIL T. WHITAKER  
PAULA WHITE  
S. WONG

**GENERAL OFFICE-Physical**  
L. BELL  
ROBERT CAHAIL  
E. L. DARRIMON  
JOHN M. FINSLAND  
LELAND LAI  
CHRIS OCONNOR  
MIGUEL A. RIVERA  
L. C. WAGNER  
TOM T. YOKOTA

**STOCKTON-Clerical**  
THOMAS P. DEGENNARO

**STOCKTON-Physical**  
DENNIS L. KELLER  
K. D. LIBHART  
EDWARD G. MITCHELL  
DONALD O COSTA  
RUBEN RIVERO  
RONALD M. RUSE  
RICHARD TORRES  
DANIEL R. VALENTINE

**CITY OF ALAMEDA**  
THOMAS BELL

**CITY OF LODI**  
DAVID COMER

**CITY OF OAKLAND**  
RONALD J. TYLER

**SACRAMENTO REGIONAL TRANSIT**  
GILBERT MANZO  
AARON SMITH

**HUMBOLT-Physical**  
DARRELL J. GILLETTE  
L. R. HENNIG  
T. A. JENNINGS JR  
E. A. ROSS  
STANLEY A. THRASH

**SHASTA-Clerical**  
LINDA BEDFORD  
BRIAN ROBB

**SHASTA-Physical**  
ALLEN K. BUCK  
DAVID A. CLARK

**CAL-PAC LASSEN**  
DENNIS SUTTON

**SIERRA PACIFIC POWER CO.**  
STEVE CURL  
DON FOSTER  
CHARLES HANKS JR  
EDWARD LEFFLER  
DENNIS W. LOPEZ  
GARY MILABAR  
HOWARD E. MORRAH  
DANA PASTRELL  
WILLIAM SMITH  
JOHN A. WARDLE

**CAL-PAC SOUTH LAKE TAHOE**  
KARL F. HODSON

**NEVADA POWER**  
LAWRENCE WETHOR

**TELEPROMPTER RENO**  
DANE BAUMGARONE  
BECKY PRIVETTE

**DE SABLA-Clerical**  
GEORGE MOLINA

**DE SABLA-Physical**  
WARREN L. BARBER JR  
MICHAEL JOHNSON  
RICHARD G. KNAUS  
JOHN SAUER  
RANDALL E. WASHINGTON

**STATE T.V. CABLE**  
JOMN A. OPP

**DRUM-Physical**  
FRED DAVIS JR  
B. HARRINGTON  
JIM R. HATTRUP  
ROBERT W. MILLER  
BEN J. NENCINI

**COLGATE-Clerical**  
RAYMOND S. COLE

**COLGATE-Physical**  
J. S. LASKY  
DAVID E. OWEN

**NORTH BAY-Clerical**  
MARK I. CLARK  
PATRICIA IRWIN  
MARK P. JOERGER  
SAM Y. OH  
JANISE SILVESTRI  
STEVEN VALENZUELA  
JOYCE WARKMAN  
SEGRETTA WOODARD

**NORTH BAY-Physical**  
DEWITT ATTWOOD  
G. R. FREITAS  
ERIC GREBNAU  
D. J. JONES  
BOB MUSTANICH  
RALPH E. OCHAVEZ  
J. C. PALYA  
MERCEDES PEMBERTON

**SACRAMENTO-Clerical**

JOSEPH P. MAXWELL  
J. L. MONROE  
THOMAS E. WHITE

**SACRAMENTO-Physical**

GARY BOOTH  
PATER E. GAGNE  
THOMAS J. GARCIA  
C. A. HOWE  
GERRY KELLY  
JAMES MACIAS  
HENDERSON MOSLEY  
FRANK M. ORTIZ  
JIM A. PITT  
HAROLD SCOTT  
JESSE E. WILLIS  
KENNETH R. WILSON

**SACRAMENTO MUNI. UTLY. DIST.**

LLOYD W. BAIRD  
EARL BARR  
MICHAEL E. BAWDEN  
DANIEL L. BELL  
DOLAYNE E. COON  
MARGARET COYLE  
GERALD L. FUNK  
RICHARD HARPER  
TIMOTHY A. JONES  
RONNIE J. MASON  
RANDELL MCDONALD  
TIMOTHY MCPHERSON  
FRANK M. MORRISON  
RICHARD PARDUE  
RODNET PROPS  
RICHARD H. RAMIREZ  
FRANK ROBERTS  
TERRY ROMSTAD  
PAUL D. SHARP  
D. E. SKINNER  
ROY M. SUNAHARA  
ALBERT VALDEZ  
IKE WILLIAMS

**U.S.B.R.**

KENNETH L. GREEN  
LOUIS MELLO  
LAURENCE RAYBORN  
JOSEPH SILVA

**CITIZENS UTILITIES**

JAMES EPSTEIN

**GENERAL CONSTRUCTION**

CARL ABRAM  
FRANK L. ABSTON  
CARL AHRENDT  
WILLIAM ALGER  
ART ALLEN  
DAVID ANDERSON  
DARWIN ANDOE  
JAMES R. ARBON  
JOHNNIE E. AUSTIN  
WILLIAM B. AVERY  
ELMER A. BARRIOS  
JAMES BECKETT  
JOSEPH C. BELASKI  
DONALD BELL  
JEROLD BEST  
GREG J. BOLEN  
HERBERT C. BOWMAN  
WILLIAM BOYLE

**GENERAL CONSTRUCTION (cont.)**

HOWARD D. BRIANS  
RICHARD BRITTON  
RICHARD BROWN  
ELTON BRYANT  
TERRY L. BUCK  
EDWARD BUDESILICH  
GREGG D. BURK  
BURL BURLESON  
JEFF P. BURNS  
DAVID CANNON  
ROBERT C. CARRIKER  
SCOTT E. CARVEL  
DANIEL CASTLE  
CHARLES CLARK  
LOUIS CLARK  
JOSEPH A. CLAUS  
JOHN H. CLOVER  
CHESTER W. COGGINS  
LLOYD CONNER  
JOHN H. COOK  
KIM CORLEY  
DENNIS COWDEN  
STEPHEN J. CUNNINGHAME  
RONALD DALY  
THOMAS DARDEN  
WENDELL L. DAVIDSON  
LAWRENCE DAVIS  
RUSSELL L. DAVIS  
MELVIN DEAN  
GORDON E. DILLON  
CLAUDE R. DOUGLAS  
JAMES R. DRAGOO  
STEVEN W. DURRETT  
DEVOIR ELIAS  
SHELBY ELWOOD  
JOHN S. FARLEY  
DAVID L. FERGUSON  
BENGT G. FERNQUIST  
LARRY R. FISHER  
RICHARD D. FLOOD  
THOMAS FLYNN  
JAMES A. FOLSOM  
LEON FORTNER  
JERRY D. FREY  
REG B. FUNK  
PATRICK C. GATES  
RON GEER  
JOHN GRACE JR  
JOHN GRAHAM  
RUFUS GREEN  
STAN GREGG  
TONY S. GUERRERO  
TIMMIE L. HAM  
JAMES HAMPTON JR  
EUGENE HARKEY  
TOM HARMON  
VICKI HARPER  
EVERETT A. HARRIMAN  
GEORGE T. HARRINGTON  
LARRY H. HARTSELL  
HAROLD HAVER  
RICHARD G. HELMS  
ARCHIE HENRY  
PAUL HENSLEE  
DAVID HERNANDEZ  
LOWELL D. HILL  
RONALD B. HILL  
LARRY HOCKETT  
ERNEST L. HOLMES  
F. E. HOLMES  
NATHANIEL HOOKER

**GENERAL CONSTRUCTION (cont.)**

DANNY W. HOPKINS  
DENNIS E. HUDGINS  
EDWIN V. JAMES  
DARREL J. JELLEY  
LEROY J. JOHNSON  
MICHEL JOHNSON  
STEVEN W. JOHNSON  
ROBERT JOHNSTON  
ROBERT A. JOINER  
ROBERT JONES  
JESS JURADO JR  
STEPHEN D. KERR  
WILLIAM R. KIMBRELL  
TERRY KING  
RONALD KIRBY  
ALAN W. KLIER  
DENNIS L. LAAM  
JESSE W. LANGLEY  
DANIEL L. LARKIBAS  
ROBERT LATHURAS  
LARRY LEE  
WILLIAM E. LEE  
RICK LEHR  
GEORGE LENT  
AARON LESTER  
THOMAS S. LIPESEY  
STEVEN A. LORENZINI  
JESSE LUCAS  
JAMES S. LUKE  
MICHAEL L. MACALUSO  
RALPH E. MACIAS  
JAMES MANN  
GEORGE L. MATHIS  
WM S. MAYER  
FRANK M. MAZZEO  
STANLEY MCCREADY  
JOHN MCDONALD JR  
CARL L. MCELRCY  
GROVER MCRAE  
PAUL MEADOWS  
HAROLD MEHRER  
JOHN MELLO  
CLIFFORD MILLIGAN  
GARY N. MINKLER  
GEORGE R. MONTERREY  
RAFAEL MONTES  
GEO T. MOORE  
GEORGE W. MORIN  
NEIL P. MORRISSEAU  
JAMES D. MYLES  
J. NEELY  
DALE NEILL  
CHAS NELSON  
RANDALL NELSON  
ROGER NELSON  
GERALD D. NEWMAN  
DENNIS J. O CONNELL  
WALTER B. OAKLEY  
NORMAN OTTO  
RICHARD PAIGE  
DENNIS PARKS  
JACK PATE  
ROBERT PEREZ  
LANNY PEYSAR  
STEVEN M. PICKERING  
RICHARD PIRIE  
MICHAEL PODANY  
DENNIS R. POSEY  
GARY C. POWELL  
JERRY K. PROCTOR  
JOHN M. QUINN

**GENERAL CONSTRUCTION (cont.)**

KENNETH RANNEY  
LESTER R. REDDING  
JOSEPH REICHLIN  
GERALD REVINO JR  
LLOYD D. RIDDLE  
CURTIS W. RILEY  
WILLIE ROGERS  
ROBERT ROGGENTINE  
CHARLES ROST  
JAMES ROWE  
JOE SAIZ  
BRUCE E. SAMPSON SR  
ERNEST SANCHEZ  
RALPH SANTACRUZ  
BRONELL SHARP  
THOMAS J. SHATSWELL  
JIM SHAW  
RONNIE A. SHIFLETT  
WALLACE SIDES  
RONALD SIMMS  
CLIFFORD SLAUGHTER  
RANDY C. SMART  
JAMES C. SMITH  
LEONARD A. SMITH JR  
LOUIE SOUZA  
ALVA LEE SPENCER  
EUGENE STAMBAUGH  
CECIL J. STEPHENS  
GARY STEVENSON  
RALPH STILWELL JR  
ARNOLD STREETMAN  
JACK STRONG  
DAVID STROUD  
JAMES STROUD  
ROBERT G. SUNDLING  
BOBBY TERRY  
JOHN B. THOMAS  
DAVID B. TRAVIS  
RONALD TUCKER  
ERNEST L. URTON  
DARROL R. VERONIE  
ROGER VINCON  
TIM WALTERS  
JAMES P. WARD  
ROBERT WASHABAUGH  
JOE W. WATKINS  
WILLIE WELDON JR  
HERSHEL L. WELLS  
MURRAY W. WHENT  
J. R. WHITE  
DARRELL WHITLEY  
LEONARD K. WHITTENBERG  
DENNIS B. WILLIAMS  
RONALD L. WILMOT  
IRA W. WILSON  
SHERRIE L. WILSON  
DONALD M. WITT  
ESTEBAN E. YBARRA  
CHARLES W. YOUNG JR

**MISCELLANEOUS**

MERLE H. BRANSON  
THOMAS E. HYDE  
RANDALL MEAHAN  
WILLIAM H. MICK  
JULIE A. NANCE  
NELSON PAGAN  
CHARLES H. ROLIN

**UTILITY TREE**

MICHAEL CUSHMAO  
  
**DAVEY TREE**  
ARVEL W. ALLEN  
STEVE BACA  
PATRICK BALFE  
GLENN BROWN  
KEITH CALVIRD  
LEWIS A. CAVALIER  
NEIL DAVENPORT  
AMADOR D. DELGADO  
JOHN DOUGLAS  
JEFF R. FAUNCE  
GEORGE E. FERNS  
JOSEPH FURNISH  
CHARLES F. HAYES  
BYRON D. HOBBS  
ALAN T. KAPACZ  
RODNEY KLUG  
CRAIG P. KOLSKI  
WILLIAM LEY  
MELVIN E. LITTLE  
RON NAILS  
BOBBY NIX  
MICHAEL NIXON  
LOUIS ROSALES  
FRANK D. SCHOWACHERT  
DAVID SHARK  
ROY SPRINGER  
TODD W. STAPLE  
WARREN R. TAYLOR  
JEFFERY W. THIERRY

**PACIFIC TREE**

LOGAN ANDERSON  
JAMES BOYKIN  
GARY BYRNES  
LELAND B. ENDRES  
ROBERT J. GUNNS  
SHELBY E. HEDGECOCK  
RANDY INGLE  
GEORGE P. JOHNSON  
HAROLD C. KECK  
JARVIS KEYS  
THOMAS KOPP  
RALPH LOPEZ  
WALTER R. LOWE  
LARRY LYONS  
WILLIAM MILLER  
JOHN R. MYERS JR  
TERRY TATUM  
TOMMY TAYLOR  
WILLIAM H. WALKER II  
LEON WILLIAM JR  
ROBERT H. WINTERS  
TOM J. YLARRAZ

**OUTSIDE CONSTRUCTION**

WILLIAM A. BAILEY III  
SAM BAUGHMAN  
DAVID DODGE  
LUTHER HALE  
JOHN RUGGLES  
JOHN SHELTON

**CATV CONSTRUCTION**

STEVEN H. PETERSON  
WILLIAM WEHINGER

# S.M.U.D. and Local 1245 Reach Agreement

On December 1, 1976 Union and District exchanged proposals and began negotiations. From December 1, 1976 through December 13, 1976 Union met with the District on ten occasions with agreement finally reached on December 13, 1976.

The offer was submitted to the membership for ratification on December 14 and 15, 1976. Union's membership approved the offer by a three to one margin.

The following is a summary of points of interest resulting from the negotiations.

- 1. General Wage Increase** - 7%
- 2. Vacation** - Personal Leave (Vacation) - a five day bonus shall be earned on employees' 17th and 23rd anniversary dates.
- 3. Meal Allowance** - the cost allowance of the first meal in a work period was increased from \$6.00 to \$8.00 plus tax, with subsequent meals remaining at the present rate of \$6.00.
- 4. Rest Period** - In addition to the present program, an employee may be excused from work during first 4 hours of a regular shift if he has

worked 4 hours or more, up to 8 hours in the 8 hours immediately preceding his regular shift.

- 5. Grievance Procedure** - Extend the optional grievance procedure thru June 30, 1978.
- 6. Cross Training Program** - District and Union agreed to strive to develop and improve a program by December 31, 1977. Purpose of such program is to cross train apprentices and journeymen in Line and Electrical classifications.
- 7. Group Health Insurance** - Union and District agreed to reopen negotiations on or before May 1, 1977 at the request of either party, after mutually cooperating to review existing plans. District will continue to pay 75% of premiums including scheduled increases.
- 8. Dental Insurance** - District will continue to pay 100% of the dental insurance premium.
- 9. Upgrade Policy** - Established policy to upgrade employees in certain qualifying situations.
- 10. Purging of Personnel Records**
  - a. Before anything is put into an em-

ployees personnel file it shall be shown to him and the employee shall be given a copy if the copy is requested.

- b. An employee may have removed from his official personnel file any material which is 6 or more years old.
- 11. Interim Negotiating Committee** - District and Union established an Interim Negotiating Committee, purpose of said committee is to review proposals concerning working conditions, civil service rules and benefits conditions.

Union's committee consisted of the following members:

Bill Paynter - Lineman; Rick Burns - Lineman; Rod Wyman - Electrical Technician; Rod Johnson - Building Maintenance Mechanic - Fresh Pond Unit; Gene Curry - Instrument and Control Technician - Rancho Seco Unit; Mike Maltby - Material Handler - Rancho Seco Unit (Mike was appointed as an alternate for Gene Curry and actually did serve on the committee in Gene's absence)

## Local 1245 and M.I.D. Reach Settlement

Local 1245 members employed by Merced Irri. Dist. ratified a 3 yr. agreement effective Jan. 1, 1977.

Committee members included Al Mancebo, John Goodson, Gene McAdams, Lee Williams and Bus. Rep. V. Loveall.

The 3 yr. package includes improvements in vacations, retirement, funeral leave, holidays and health care. The agreement also provides for a gen. wage increase of 5.5% in 1977 and wage reopens for 1978, 1979. It also provides several inequity adjustments for various classifications.

One of the major gains was a fully paid dental care plan for employees of the District. The plan will also provide coverage for dependents at the employers option.

Bus. Rep. Loveall would like to take this opportunity to thank the committee for their many hours of hard work and their willingness to give up several nights from their own personal lives and interests to help better the working and living conditions of their fellow members.

# The Safety Scene

Have you seen this form posted at your headquarters?

STATE OF CALIFORNIA  
AGRICULTURE AND SERVICES AGENCY

DEPARTMENT OF INDUSTRIAL RELATIONS  
DIVISION OF LABOR STATISTICS AND RESEARCH

CAL/OSHA No. 102

Complete no later than one month after close of calendar year. See back of this form for posting requirements and instructions.

Form Approved  
OMB No. 44R 1453

SUMMARY OF  
OCCUPATIONAL INJURIES AND ILLNESSES  
FOR CALENDAR YEAR 19\_\_

Establishment:  
NAME \_\_\_\_\_  
ADDRESS \_\_\_\_\_

| INJURY AND ILLNESS CATEGORY  | TOTAL CASES | DEATHS                                  | LOST WORKDAY CASES                     |  |                                       |                                       | NONFATAL CASES WITHOUT LOST WORKDAYS    | TERMINATIONS OR PERMANENT TRANSFERS     |     |
|--|-------------|---|--|--|---------------------------------------|---------------------------------------|---|---|-----|
|  |             |   | Total Lost Workday Cases               | Cases Involving Days Away From Work      | Days Away From Work                   | Days of Restricted Work Activity      |   |   |     |
| CATEGORY   | CODE        | Number of entries in Col. 7 of the log. | Number of checks in Col. 9 of the log. | Number of entries in Col. 9A of the log. | Sum of entries in Col. 9A of the log. | Sum of entries in Col. 9B of the log. | Number of checks in Col. 10 of the log. | Number of checks in Col. 11 of the log. |     |
|  |             | (1)                                     | (2)                                    | (3)                                      | (4)                                   | (5)                                   | (6)                                     | (7)                                     | (8) |
| OCCUPATIONAL INJURIES  | 10          |   |  |  |                                       |                                       |   |   |     |
| OCCUPATIONAL ILLNESSES   |             |   |  |  |                                       |                                       |   |   |     |
| Occupational Skin Diseases or Disorders                                | 21          |   |  |  |                                       |                                       |   |   |     |
| Dust Diseases of the Lungs   | 22          |   |  |  |                                       |                                       |   |   |     |
| Respiratory Conditions Due to Toxic Agents                             | 23          |   |  |  |                                       |                                       |   |   |     |
| Poisoning (Systemic Effects of Toxic Materials)                        | 24          |   |  |  |                                       |                                       |   |   |     |
| Disorders Due to Physical Agents                                       | 25          |   |  |  |                                       |                                       |   |   |     |
| Disorders Associated With Repeated Trauma                              | 26          |   |  |  |                                       |                                       |   |   |     |
| All Other Occupational Illnesses                                       | 29          |   |  |  |                                       |                                       |   |   |     |
| TOTAL OCCUPATIONAL ILLNESSES (Sum of Codes 21 through 29)              | 30          |   |  |  |                                       |                                       |   |   |     |
| TOTAL OCCUPATIONAL INJURIES AND ILLNESSES (Sum of code 10 and code 30) | 31          |   |  |  |                                       |                                       |   |   |     |

I certify that this Summary of Occupational Injuries and Illnesses is true and complete, to the best of my knowledge.

Signature \_\_\_\_\_  
Title \_\_\_\_\_  
Date \_\_\_\_\_

This is NOT a report form. Keep it in the establishment for 5 years.

On December 29, 1970, the President signed the Williams-Steiger Occupational Safety and Health Act of 1970, known as OSHA, which became effective April 28, 1971.

The purpose of the Act was "to assure so far as possible every working man and woman in the Nation safe and healthful working conditions and to preserve our human resources."

Under the authority vested in him under the Federal Act, the Secretary of Labor adopted **recordkeeping** and **reporting** requirements for all employers in the private sector on July 2, 1971.

Section 18 of the Federal Act permits States to assume responsibility for development and enforcement of occupational safety and health standards. States wishing to develop and enforce such standards had to submit a State Plan for the development of such standards and for their enforcement.

California's Occupational Safety and Health Plan was accepted by the Department of Labor on April 24, 1973, and the enabling legislation required by the Plan—the California Occupational Safety and Health Act—was passed and approved by the Governor on October 2, 1973, and took effect immediately.

Neither the California Occupational Safety and Health Act passed in 1973 nor the more recent amendment to Section 6410 of the California Labor Code, which became effective January 1, 1975, alters the responsibility of employers in the private sector to maintain records on occupational injuries and illnesses. The legislation merely extended the employer's recordkeeping obligation to include public agencies as well and placed responsibility for prescribing and providing the forms necessary to maintain the required records with the Division of Labor Statistics and Research and the responsibility for enforcing by citation and penalty assessment violations of the recordkeeping requirements with the Division of Industrial Safety.

For the members of Local 1245 that work in States other than California, Federal regulations provide that States which administer their own safety activities under approved State plans, as does California, must require employers to record the identical information called for on OSHA Forms 100, 101, and 102, but may require employers to record additional information as well. States may also extend recordkeeping requirements to all employers regardless of size although Federal law exempts small employers from OSHA recordkeeping. California's recordkeeping requirements mirror the Federal regulations. Small employers are exempt from CAL/OSHA recordkeeping and CAL/OSHA Forms 100 and 102 mirror the Federal OSHA forms. If you are in doubt as to what requirements your state has to comply with, contact your Business Representative.

An employer is exempt from keeping CAL/OSHA records if he had no more than seven employees at any one time in the previous calendar year. In determining whether the small employer exemption applies, an employer must count **all** employees, whether full- or part-time, in each of his establishments anywhere in the nation.

The Secretary of Labor is empowered to grant **recordkeeping variances** where a firm petitions to keep records in a manner that deviates from the guidelines. This authority has not been delegated to the States, even for States with approved Safety and Health Plans. A petition for a recordkeeping variance must be submitted to the Bureau of Labor Statistics, U.S. Department of Labor. While petitions were considered, it is important that uniformity of recordkeeping be maintained, and very few petitions have been granted throughout the entire country. Your employer may have obtained a variance for recordkeeping in your headquarters. This would allow the employer to deviate from the recordkeeping and posting requirements. In any event, if this form is not posted in your headquarters, notify your Business Representative.

The summary form must be posted no later than February 1, and must remain in place until March 1st.

## Tough new law requires Reports on Carcinogens

A bill requiring users of 14 carcinogens, asbestos, and vinyl chloride to report such use to the California Division of Industrial Safety was signed by Governor Edmund G. Brown Jr. on September 20 and will take effect on January 1, 1977.

The bill, SB-1678, sponsored by state Senator Alen Gregorio (D-San Mateo), directs the California Occupational Safety and Health Standards Board to adopt tough standards for carcinogens, asbestos, and vinyl chloride, and increases penalties for violations of the standards.

The existing standards regulating those substances will be continued, but the Standards Board is authorized to adopt standards for other carcinogens even if the Federal Occupational Safety and Health Ad-

ministration has not acted to regulate them. However, the Standards Board is ordered to adopt rules "requiring each employer which uses any carcinogen, including asbestos and vinyl chloride, to submit a written report regarding such use or any incident which results in the release of a potentially hazardous amount of a carcinogen into any area where employees may be exposed."

Medical examinations at least as effective as those required by existing standards must be provided by employers.

Pursuant to the reporting requirement, the state Department of Health is directed to establish priorities for inspections of workplaces which report use of carcinogens, asbestos, or vinyl chloride.

Employers, depending on the company size, will be charged a fee if they are inspected. The fee, which may be assessed only once a year, ranges from \$25 to \$500.

If an inspection reveals that a carcinogen is being used in violation of state standards, the employer is subject to a minimum \$500 fine. Failure to report use of a carcinogen also is punishable by a \$500 fine. The minimum penalty for a repeated violation is \$5,000.

An appropriation of \$1.0 million is provided for enforcing the bill's provisions from January 1, 1977, through June 30, 1977. Most of the money is earmarked for the Department of Health.

# Work Safely