



## Tide mounts against Prop. 9

Opposition to Proposition 9, the controversial so-called "Political Reform Act of 1974," is mounting from all quarters.

In the past month State Senators Nicholas Petris, Mervyn Dymally, and Alfred Alquist have added their voices to those urging the voters to reject the measure on the June Ballot.

Los Angeles TV Station KNXT and the San Francisco Chronicle have knocked the measure in editorials, and the California Federation of Young Democrats expressed unequivocal opposition to the initiative at its recent statewide convention.

**IN CALLING** on the voters to reject the proposition, Senator Dymally pointed to a major gap. While its passage would immediately repeal all political reform acts now on the books on the day after election, Proposition 9 itself would not go into effect until January 7, 1975.

"There will be no campaign reporting or conflict of interest laws in effect for seven months after the primary elections," Senator Dymally said. One hundred eighty thousand, two hundred eighty.

Senator Petris praised the intentions of the measure, but said, "I do not believe that they will be carried out through this initiative."

**THE RECENTLY-ELECTED** president of the Young Democrats Federation of California, Gibbs Brown, noted that the most needed

reform in political life is the restriction of influence of big business and large corporations, but they "have little to fear from Proposition 9."

The Young Democrats condemned it as "an undemocratic bill, unduly restricting organizations which represent millions of hard working Californians while leaving loopholes for the super-rich."

The Chronicle's editorial on the initiative admitted that "while it may not be politically fashionable to say a good word for lobbyists, the fact is that they are technicians who have a legitimate and indeed essential role in the legislative process and it is wrong and unfair to hedge them about to the point of political ineffectiveness."

**JOHN F. HENNING**, executive officer of the California Federation of Labor, AFL-CIO, has called on the Sacramento Superior Court to dismiss a suit filed by the People's Lobby, a sponsor of the proposition, which seeks to revoke Henning's certification as a lobbyist.

Henning described the suit as "an anti-labor smear effort by those who resent the AFL-CIO's opposition." Henning's response to the suit before the Superior Court states that it threatens his constitutional right "to petition one's government and to associate for political goals." Court action on the issue was scheduled for Monday, May 13, in Sacramento.

Northern California Labor

## Local Union Office, Executive Board and Convention Candidates - see page 2

Local Union 1245's Officers, Executive Board Members and convention delegates are to be elected by the Local Union membership in June.

On May 31, 1974, the Local Union Election Committee will mail ballots to every member of Local Union 1245 qualified to vote in accordance with Article II, Section 14 of the Local Union Bylaws. These ballots must be marked and mailed back to the Election Committee. Only those ballots in Post Office Box 5008, Walnut Creek, Calif., by 10:00 a.m. on June 17, 1974, will be counted.

Any member who does not receive a ballot within a few days after June 1, may request a ballot by addressing the Judge of the Election, P.O. Box 4790, Walnut Creek, Calif. 94596, or by appearing in person at the office of Local Union 1245 in Walnut Creek, in accordance with Article II, Section 19 of the Local Union Bylaws.

The candidates, together with a factual record of their activities within the Local Union as provided by Article II, Section 15 of the Local Union Bylaws, and Article XXVII, Section 1 (17) (A), of the International Constitution, are listed starting on page 2 of this issue of the Utility Reporter.

Your Election Committee urges each and every member to participate in this most important part of Union membership.

## EAST BAY MEMBERS RECEIVE PINS



## PROP NINE

Proposition Nine will appear on the June 4 primary election ballot under the title, "Political Reform Act of 1974."

But organized labor, as well as others in California and throughout the nation, don't think it's reform.

Labor views the proposition as a measure of regression not reform. It is an anti-labor proposal sponsored by an anti-labor organization known as Common Cause.

It would destroy the political freedom of the union movement in California. It would destroy the constitutional freedom of the unions of California.

It would deny members their collective right to give financial support to candidates of their choice and leave union labor helpless before its political enemies.

That's why it must be defeated!

## Unit Officers to be Elected at June Meetings

In accordance with Article IV of the Bylaws of Local Union 1245, IBEW, all Unit Officers will be nominated and elected at regular Unit Meetings held during the month of June 1974.

The provisions of Article IV set forth the Unit Officers to be elected, the qualifications required to be a candidate and the election procedure to be followed.

## Charles R. Hayes

could have won \$50.00 if he had noticed his Union membership card number in the April issue of the Utility Reporter. This month's number is as well hidden as it was last month. Don't miss out, read your Utility Reporter.

## LOOK FOR YOUR CARD NUMBER

**... HAVE YOU MOVED?**

MY NEW ADDRESS IS:

NAME \_\_\_\_\_

STREET \_\_\_\_\_

CITY \_\_\_\_\_ STATE \_\_\_\_\_ ZIP \_\_\_\_\_

RETURN TO:

P.O. BOX 4790, WALNUT CREEK, CALIF. 94596

**the utility reporter**  
Telephone (415) 933-6060

|                  |                  |
|------------------|------------------|
| E. L. MITCHELL   | Executive Editor |
| KENNETH O. LOHRE | Managing Editor  |
| M. A. WALTERS    | Assistant Editor |
| JOHN J. WILDER   | Assistant Editor |
| LAWRENCE N. FOSS | Assistant Editor |

Executive Board: Leland Thomas Jr., Mickey D. Harrington, Guy E. Marley, William Jack Graves, Thomas C. Conwell, Jr., C. P. "Red" Homeberry, James Lydon.

Published monthly at 1818 Grove Street, Oakland, California 94612. Official publication of Local Union 1245, International Brotherhood of Electrical Workers, AFL-CIO, P.O. Box 4790, Walnut Creek, Ca. 94596. Second Class postage paid at Oakland, California.

POSTMASTER: Please send Form 3579, Change of Address, and all correspondence to the Utility Reporter, to P.O. Box 4790, Walnut Creek, Calif. 94596.

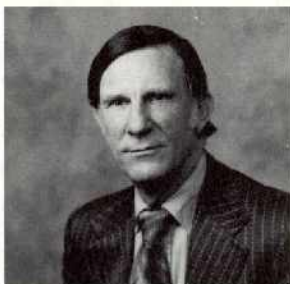
Subscription price . . . . . \$1.20 per year. Single copies, 10 cents



MICKEY HARRINGTON

## MICKEY HARRINGTON

Initiated by Local Union 1245 on March 1, 1960. Is employed as a Working Foreman "B" by PG&E in the General Construction Department at Citrus Heights. Member of Unit 3815 - Davis. Is the current Local Union Recording Secretary. Has served as Executive Board Member-at-Large, 1968, and as a member of the Business Manager's Staff 1968-1971; Shop Steward, 1963 to 1968 and 1971 to present; Executive Committee member of Unit 3815, 1968-1971 and is currently Vice Chairman - General Construction Grievance Committee, 1966 to 1971; Lines of Progression Committee for G. C., 1970 to 1973 - Advisor since 1973; Equipment Committee for G. C., 1970 to 1973 - Advisor since 1973; Ways and Means Committee Secretary, 1971 to 1972; Ways and Means Committee Chairman, 1972 to date; Secretary to the Political Education Committee, 1971 to 1972; Chairman to the Political Education Committee, 1972 to date; Secretary to the Policy and Resolution Committee, 1971 to date; Secretary to the Staff Pension Trustee Committee, 1971 to date; delegate to the California Labor Federation Conventions 1968 and 1972; Nevada State AFL-CIO Convention, 1972; California State Association of Electrical Workers Conference, 1972; Nevada State Association of Electrical Workers Conference, 1972; 1973 IBEW Utility Conference; the 1974 Inter-Union Gas Conference. Has attended various IBEW Northern Joint Executive Board Conferences since 1968. Attended the Konociti Conference in 1969 and the Claremont Conference in 1971; attended meeting of the Public Employees Council of California and the California Labor Council on Political Education in 1968 and 1972. Delegate to the 1973 LAMPAC meeting and represented Local 1245 at the Golden Empire Council Eagle Scout Recognition Dinner.



L. L. MITCHELL

## L. L. MITCHELL

Initiated by Local 1245, I.B.E.W. on October 1, 1942. Presently employed as Business Manager-Financial Secretary Local 1245; held full-time positions of Senior Assistant Business Manager (November 1965 - March 1971), Assistant Business Manager (February 1954 - November 1965), Business Representative from March 1951 to February 1954, serving in the City of Lodi, Stockton Division, Humboldt Division, Shasta Division and Kings District, San Joaquin Division. Executive Board member 1946 to 1951, grievance committeeman and shop steward 1942 - 1951, Unit Chairman and Executive Committee member, Eureka Units Spokesman and member of PG&E wage and contract and benefit committee, Sierra Pacific Power Company, Citizens Utilities Company of California, City of Lodi, Pacific Gas Transmission Company, Standard Pacific Gas Line, Inc., Pacific Tree Expert Company and Davey Tree Surgery Company negotiating committees. Served as a member of Sacramento Municipal Utility District and United States Bureau of Reclamation negotiating committees. Served as member of PG&E and Sierra Pacific Power Company Apprenticeship and Training committees, Local 1245 representative on Joint Review Committee-Sierra Pacific Power Company and Secretary of PG&E Review Committee. Member of Local 1245 Bylaw Revision Committee and past member of Association of Training Directors. Member of 1245 System Safety Committee. Delegate to IBEW Convention 1950, 1954, 1958, 1962, 1966 and 1970; IBEW Utility Conference, 9th District IBEW Progress

Meetings, California State Association of Electrical Workers (currently Executive Board member and member Apprenticeship Committee), Nevada State Association of Electrical Workers (served as President, Vice-President and Executive Board member) Northern, Central and Southern IBEW Joint Executive Board Conferences, Delegate to AFL Convention 1954, AFL-CIO Conventions, following merger, Western Regional, Nevada and California C.O.P.E. Conventions, Nevada Labor Federation Convention (served on Rules and Resolutions Committees), California State Federation of Labor Conventions (served on Legislative, Rules and Resolutions Committees), Labor and Management Public Affairs Committee (serving as co-chairman two conferences), Alameda Central Labor Council, California Labor Press Association, Western Labor Press Association and International Labor Press Association, 1245 Representative California Health Plan Alternatives and former Board of Director of United Bay Area Crusade. Conferences, labor programs and seminars at University of San Francisco, University of Illinois, Nevada State Labor School, Rocky Mountain Labor School, Hurley Management and Industrial Relations Program, Industrial Relations Certificate Program, University of California, IBEW Industrial Atomic Energy Uses, Hazards and Controls Program, Harvard Trade Union Program. Speaker on behalf of 1245 at Stanford Graduate School of Business Administration, University of California, San Jose State College, University of San Francisco and Hastings School of Law. Member of Industrial Research Associates and Commonwealth Club; Vice President and Executive Board member, California State Federation of Labor (serving on Legislative Committee and Safety and Occupational Health Committee), Vice President and Executive Board member Committee on Political Education, IBEW representative Steering Committee for Inter-Union Gas Conferences and Board member California Council on Economic and Environmental Balance.

## RAYMOND N. MOTA

Initiated by Local Union 1245 on November 1, 1971.

## PRESIDENT



HOWARD DARINGTON

## HOWARD DARINGTON

Initiated by Local Union 1245 October 1, 1951. Employed as a Control Technician by PG&E at the Humboldt Bay Power Plant. Is a member of Unit 3111 - Eureka, Advisory Council Member Humboldt Division 1965-1971, 1972 to present; Vice-Chairman Unit 1214 - Watsonville Moss Landing 1957-1959; Chairman 1959-1961; Recorder 1961-1962; Vice-Chairman Unit 3111 - Eureka 1962-1963; Chairman 1963-1965; Recorder 1965 to present; Shop Steward, Coast Valleys Division 1959-1962; Shop Steward, Humboldt Division, 1962 to present, served as Chief Shop Steward in Humboldt Division from 1964-1969. Member and Chairman Coast Valleys Division Joint Grievance Committee 1959-1962; Humboldt Division Joint Grievance Committee since July 1965. Member of PG&E Steam Advisory Committee since June 1958; PG&E Steam Department Negotiating Committee since 1958; 1966 PG&E Wage & Contract Negotiating Committee; PG&E Contract Language Revision Committee since 1970; member and Chairman of 1968 and 1969 PG&E Wage Negotiating Committee; 1969 PG&E Pension and Benefit Negotiating Committee and 1970 PG&E Wage & Contract Negotiating Committee; member 1973-74 PG&E Pension and Benefit Negotiating Committee. Attended Local Union Conferences 1958, 1959 and 1960; Shop Steward Conferences 1961; Clerical Conference 1967; Konociti Seminar 1969; delegate on behalf of Local Union 1245 to COPE Workshop Conference, Eureka 1965 and to the Health Conference, Eureka 1968. Member of committee to evaluate nuclear job problems at Humboldt Bay Power Plant 1968-1969.

## LELAND THOMAS JR.

Initiated by Local Union 1324 on May 29, 1950. Employed by PG&E as a Line Subforeman in Shasta Division. Is a member of Unit 3212 - Redding. Is presently



LELAND THOMAS JR.

Local Union President; served as Local Union President 1962-1967; Vice President; Southern Area Executive Board Member 1962, Advisory Council member from San Jose Division and member of San Jose Joint Grievance Committee 1953-1955. Former Chairman and Vice Chairman of Unit 1511, San Jose; member of Unit Safety Committee and Ways and Means Committee. Was a Shop Steward in San Jose Division; was a member of the Local Union Job Protection Committee 1959, Overhead-Underground Committee 1962; member of the Local Union Safety Advisory Committee and Chairman of the Local Union Safety Committee. Member of the California State Electrical Association Apprenticeship Committee and member of the Local Union Master Apprenticeship Committee. Was a delegate to the IBEW International Conventions in 1966 and 1970; California Conference on Underground Systems, 1968; Governor's Traffic Safety Conference 1968; and Governor's Industrial Safety Conference 1968. Was also a delegate to the California Federation of Labor, AFL-CIO conventions in 1962, 1964, 1966, National AFL-CIO Conventions in 1963, 1965; International Labor Press Association Convention 1963. Appeared as an expert witness on behalf of Local 1245 at Stanford University (Sloan Foundation) 1963, 1964. Attended the California AFL-CIO Summer School at the University of California at Berkeley 1967; completed the 150 hour Hurley Management and Industrial Relations Program. Participated in Local Union Leadership Seminar at Konociti. Co-chaired the 1969 United Fund Appeal in San Jose Division on behalf of Local Union 1245 (Joint PG&E and Local Union 1245). Attended all Local Union conferences since 1958, as well as numerous Shop Steward Conferences within the Local's jurisdiction. Resigned as Local Union President in July of 1967 to accept position as Business Representative in the area of training and safety and served in that capacity until January 1968. Has twice represented Local Union 1245 as a delegate to Council on Religion and International Affairs Conference. Took leave of absence in 1969 to accept representation of Shasta and DeSaba Divisions of PG&E. Citizens Utilities Company of California and Pacific Tree Expert Company. Attended Inter-Union Gas Conference in 1973. Represented Local Union 1245 in several LAMPAC Conferences.

## VICE PRESIDENT



THOMAS C. CONWELL, JR.

## THOMAS C. CONWELL, JR.

Initiated by Local Union 1245 on September 1, 1964. Currently employed by PG&E as a Lineman at Willows and is a member of Unit 3411 in Chico. Is presently Executive Board Member-Northern Area. Shop Steward in General Construction Department 1964-1969; currently Shop Steward in DeSaba Division. Has served as member of General Construction Department Joint Grievance Committee and the DeSaba Division Joint Grievance Committee. Member of Executive Committee, Unit 3411, 1967-1969 and Unit Chairman 1969-1971. Has served on the Local Union Election Committee, the PG&E Ratification Ballot Committee. Is a member of the Local Union Political Education Committee, Policy and Resolution Committee, Safety Committee, Bylaw Committee and Chairman of Communication Committee. Has served as a

delegate to Nevada State Federation of Labor Convention 1971; Nevada State Association of Electrical Workers Conference 1971; Northern California Joint Executive Board Conference, IBEW - 1971-1972; California State Federation AFL-CIO Convention 1972, California State Association of Electrical Workers Conference 1972; LAMPAC meeting 1973; IBEW Utility Conferences 1973-1974; California Labor COPE Convention 1974; National Area COPE Conference 1974; IBEW Ninth District Progress Meeting 1974; California Labor Federation Legislative Conference 1974; attended the Konociti Conference in 1969 and the Claremont Conference in 1971; attended Shop Steward Conferences in General Construction, DeSaba Division and almost all areas served by the Northern Area Executive Board member.



C. P. "RED" HENNEBERRY

## C. P. "RED" HENNEBERRY

Initiated by Local Union 1245 on May 1, 1952. Currently employed by PG&E as an Electrician in Oakland. Member of Unit 2311 in Oakland. Currently Local Union Vice President. Has served as Local Union Treasurer and as Central Area Executive Board Member; Advisory Council - East Bay Division; Chairman and Executive Committee member of Unit 2311 and is a Shop Steward. Attended COPE Conference; Labor-Management School, University of San Francisco; Konociti Conference and Claremont Conferences; Governor's Safety Conference; Ninth District Progress Meeting 1970 and 1973; delegate to 29th International Convention, I.B.E.W., 1970 and to Convention of California Labor Federation, AFL-CIO, 1970 and 1972; California State Association of Consumers Conference, IBEW Utility Conference 1972; California State Association of Electrical Workers Conference 1971 and 1972; LAMPAC meeting 1973; Inter-Union Gas Conference 1974 and Wage Price Control Seminar in 1971. Is a member of the Local Union Policy and Communication Committees.



E. M. "BUFFALO" HORN

## E. M. "BUFFALO" HORN

Initiated by Local Union 1245 on April 1, 1955. Currently employed as Line Subforeman in Concord by PG&E. Member of Unit 2316 in Concord. Advisory Council member, East Bay Material Distribution 1960-1970. Has been a Shop Steward since 1965. Is a delegate to Contra Costa Central Labor Council; Chairman East Bay Division Joint Grievance Committee and served on PG&E Pension Negotiating Committee in 1968, the PG&E Wage Negotiating Committee in 1972 and the PG&E Pension and Benefit Negotiating Committee in 1973-1974. Served as a member of the Advisory Committee to the Local Union Examining Committee. Attended the Claremont Conference in 1971.

## RECORDING SECRETARY

## HANSEL L. BURNS

Initiated by Local Union 1245 on April 1, 1969.

## MARK G. BURNS, JR.

Initiated by Local Union 1245 on July 1, 1955. Currently employed as Electrical Machinist by PG&E at Rogers Flat. Mem-

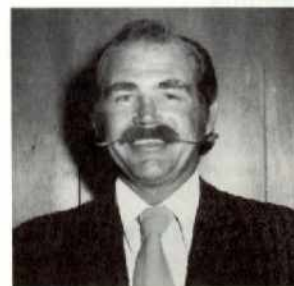
Chairman of Unit 3412 and is currently Recorder of Unit 3417 and is a Shop Steward. Was Chairman of the Safety Advisory Committee and has served as a member of the DeSaba Division Joint Grievance Committee; served on Local Union Negotiating Subcommittee in 1966 and was a member of Apprentice Subcommittee for Apprentice Electrical Machinists. Has been a delegate to Safety Conferences.

Pension and Benefit Negotiating Committee.



RICHARD D. ROBUCK

**EXECUTIVE BOARD - SOUTHERN AREA**



JAMES W. "BUD" GRAY

**JAMES W. "BUD" GRAY**

Initiated by Local Union 1245 on March 1, 1961. Is employed as a Line Subforeman by PG&E at Watsonville. Member of Unit 1513 in Santa Cruz. Is currently Treasurer of Local 1245 and on the Board of Directors of the Energy Workers Center, Inc. Has served as Chairman of Unit 1315, Santa Cruz; Shop Steward since 1963; served as a member of San Jose Division Joint Grievance Committee; member and Chairman of Safety Advisory Committee and member of 500 K.V. Committee. Was liaison between Safety Committee and Safety Advisory Committee and assisted the Ways and Means Committee and Policy Committee. Delegate to 1971 Governor's Safety Conference; served as Chairman, Assistant Chairman and Master of Ceremonies for three dinner dances put on by Unit 1513 and on Unit Proposal Committee in 1970; served as Alternate for the Advisory Council. Delegate to OSHA Conference in 1972; California Labor Federation AFL-CIO Convention in 1972; LAMPAC meeting in 1973; IBEW Utility Conference, 1973; Labor-Management Public Affairs Committee, 1973; Inter-Union Gas Conference, 1974.

**WILLIAM B. KLINE**

Initiated by Local Union 1245 on October 1, 1971.



VERNON D. LOVEALL

**VERNON D. LOVEALL**

Initiated by Local Union 1245 on February 1, 1961. Is employed by PG&E as a Line Subforeman in Merced. Member of Unit 1123, Merced. Served as Business Representative in San Joaquin Division 1971-1973, servicing employees of PG&E, Merced Irrigation District, U.S.B.R. - Mid Pacific Region, G. E. Cablevision and Pacific Tree Expert Company. Served as Vice Chairman Unit 1123 and as a Shop Steward prior to and subsequent to being a Business Representative. Was a member of the San Joaquin Joint Grievance Committee 1970-1971 and a member of the Merced Irrigation District Negotiating Committee. Served as a delegate to Fresno Central Labor Council and member of its Executive Board from 1971-1973. Is currently a delegate to the Merced-Mariposa Central Labor Council.

**JESS B. VASQUEZ**

Initiated by Local Union 1245 on August 1, 1969.

**INITIATED TO MEMBERSHIP**

Initiated by Local Union 1245 on September 1, 1962. Is employed by PG&E as a Gas Serviceman at Richmond. Is a member of Unit 2316, Concord. Served as a Business Representative from 1970 to 1973 servicing members in East Bay Division and Pipeline Operations of PG&E, Standard Pacific Gas Line, Inc., Pacific Tree Expert Company and Concord TV Cable. Served as Chairman of Unit 2316 and as Shop Steward prior to and subsequent to serving as a Business Representative. Served as a member of the 1970 PG&E Wage and Contract Negotiating Committee; was a member of the East Bay Joint Grievance Committee and the PG&E Review Committee. Served on the Steam Traveling Crew, Reserve Gas Serviceman and Relief Service Operators Interim Committees; was a delegate to and a member of the Executive Board of the Contra Costa County Central Labor Council and a delegate to the Alameda County Central Labor Council. Attended Unit Chairmen and Records Leadership Conferences in 1969 and 1972. Participated as a Judge representing Local 1245 in PG&E's Scholarship Program and represented Local 1245 in "Politics 70". Attended courses in Labor Arbitration and Labor Law.



JACQUELINE A. OFFERSON

**JACQUELINE A. OFFERSON**

Initiated by Local Union 1245 on September 1, 1969. Is employed by PG&E as a Clerk B in its General Office. Is a member of Unit 2401, San Francisco (Clerical) and is present Unit Recorder. Is a Shop Steward. Has served as an Alternate to the General Office Joint Grievance Committee. Attended the Unit Officers Conference and the Walnut Creek Clerical Shop Stewards Conference.

**EXECUTIVE BOARD - NORTHERN AREA**



CARL F. KELLY

**CARL F. KELLY**

Initiated by Local Union 1245 on March 1, 1962. Is employed by the Sierra Pacific Power Company as a Control Technician. Is a member of Unit 3311, Reno, serving as Chairman from 1969 to 1971, and a Shop Steward. Has served as a member of the Sierra Pacific Power Company negotiating committee in 1964, 1966, and 1968, and was Chairman in 1968. Has been a member of the Sierra Pacific Power Company Apprenticeship Committee since 1964. Served on the Overhead and Underground Interim Bargaining Committee in 1966, Safety Committee in 1966 and the Technician's Training Program Committee in 1970.

**RICHARD R. MADDEN**

Initiated by Local Union 1245 on February 1, 1968.

**RICHARD W. MOODY**

Initiated by Local Union 1245 on July 1, 1962.

**WILLIAM H. PEITZ**

Initiated by Local Union 1245 on July 1, 1949. Is employed by the United States Bureau of Reclamation, Region 2, as a Communication and Instrument Technician at Tracy. Was Chairman of Unit 2514, Tracy and a member of the Unit Executive Committee. Has been a Shop Steward in PG&E, 1951-1956 and is currently a Shop Steward at the U.S.B.R.



WILLIAM H. PEITZ

Tracy Pumping Plant having served since 1956. Is now and has been a member of the U.S.B.R. negotiating committee since 1957. Was chairman of Unit 2514 Labor Day Picnic in 1971, 1972 and 1973.



DALE TURMAN

**DALE TURMAN**

Initiated into Local Union 1245 on June 1, 1963. Is currently employed by PG&E as an Electrical Machinist at Rodgers Flat and is a member of Unit 3417 in Paradise. Is currently Advisory Council Member, DeSaba Division. Has served as Vice-Chairman of Unit 3413 - Quincy - Feather River from 1965 to 1967; Unit Recorder from 1967 to 1970; has been a Shop Steward since 1969 and as Chief Shop Steward, Feather River Region since 1971. Is a member of the DeSaba Division Joint Grievance Committee. Was a member of the 1972 Advisory Council Structure Committee. Is a delegate to the Butte Glenn Central Labor Council. Attended Local Union Conferences in 1966 and 1968; Konoceti Conference in 1969 and the Claremont Conference in 1971.

**WILLIAM M. WARD**

Initiated by Local Union 1245 on September 1, 1953. Is employed by the Pacific Gas and Electric Company as a Relief First Operator at Round Mountain. Is a member of Unit 3213, Burney. Has been a member of the Shasta Division Joint Grievance Committee since 1960. Was Chairman and Vice Chairman of the Pit Canyon Unit and a Shop Steward since 1957. Served as a member of the Substation Interim Bargaining Committee.

**EXECUTIVE BOARD - AT-LARGE**



MYRON J. GOMES

**MYRON J. GOMES**

Initiated by Local 1245 on December 1, 1971. Is employed by PG&E as a Field Clerk in General Construction at Fresno. Is a Shop Steward.



GUY E. MARLEY



JAMES M. LYDON

**JAMES M. LYDON**

Initiated by Local Union 1245 on April 1, 1956. Is employed by PG&E as a Light Crew Foreman (gas) at Oakland. Member of Unit 2311 - Oakland. Is currently Executive Board Member - Central Area. Served as Recording Secretary of Local Union 1245, 1969-1971; Executive Board Member - Central Area from 1964-1969 and Treasurer from 1963 to 1964; Shop Steward, East Bay Division since 1960. Served on Executive Committee of Unit 2311 - Oakland, 1961-1963, 1969-1971; as Vice-Chairman, 1963-1965, and as Unit Chairman; served as member of Local Union Trustee Committee; Advisory Council member 1962-1963; Chairman of East Bay Division Grievance Committee 1962-1964; delegate to Ninth District I.B.E.W. Progress Meetings 1963, 1965, 1973 and 1974; the U.C. Seminar "Labor and the Free Society", 1963; the Alameda County Central Labor Council in 1964, and currently serving in that capacity; to the Nevada State Association of Electrical Workers, 1964; the California State Association of Electrical Workers 1964-1970; California Labor Federation Conventions in 1964, 1966, 1968, 1970 and 1972; San Francisco Pre-General Election Convention 1964, 1970; the Governor's Industrial Safety Conference 1965 and 1968; the Joint Executive Board Conference of Northern California Electrical Workers in 1966, 1968, 1969, 1970 and 1974; I.B.E.W. International Convention in 1966; State AFL-CIO Legislative Conference in 1967; Conference on "Undergrounding of Utilities", 1967; California State COPE Endorsing Conference, 1968; Inter-Union Gas Conference 1969 and 1972; I.B.E.W. Regional Utility Conference 1970, 1971 and 1973; Nevada State AFL-CIO Convention 1970; and to the Northern California Construction Institute "What Price Man" in 1971. Served as member of Alameda County Central Labor Council Investigating Committee 1965-1968; attended Labor-Management School at the University of San Francisco 1964, 1965 and 1972; member of Ways and Means Committee; represented Local Union 1245 at Veterans Hospital Christmas Committee 1966 and 1968; participated in Konoceti Conference in 1969; represented Local Union 1245 at Awards Luncheon of the United Bay Area Crusade in 1969; the annual Eagle Scout Recognition Dinner in 1970 and 1973, and at the PG&E sponsored "Politics 70". Attended LAMPAC meeting in 1973 and Shop Stewards Conferences in East Bay Division.



BETTY J. THOMAS

**BETTY J. THOMAS**

Initiated June 1, 1970 by Local Union 1245. Is employed by PG&E as a Field Clerk in General Construction at Salinas (Gas). Is a Shop Steward and a member of the 1973-74 PG&E Pension and Benefit Negotiating Committee.

**TREASURER**

**RICHARD D. ROBUCK**

Initiated into Local Union 1245 on December 1, 1964. Is employed by PG&E as a 1st Operator "A" Substation. Is a

Initiated by Local Union 1245 on October 1, 1949. Is employed by PG&E as a Field Clerk, Senior, in General Construction at Campbell. Is a member of Unit 1513, Santa Cruz. Is the current Executive Board Member-at-Large. Has been a Shop Steward since 1949. Attended Local Union conferences at the Claremont Hotel in Berkeley and the Leanington Hotel in Oakland.

### MELVIN OLIVER

Initiated by Local Union 1245 on December 1, 1969. Is employed by PG&E as a Heavy Truck Driver in General Construction at Oakland. Is a member of Unit 2312, East Bay Area, General Construction. Is the Vice Chairman of Unit 2312 and a Shop Steward.

### JON R. RODGERS

Initiated by Local Union 1245 on May 1, 1970.

### ALEXANDER WASHINGTON

Initiated by Local Union 1245 on May 1, 1965.

### ADVISORY COUNCIL MEMBER - SAN JOAQUIN DIVISION



RUSSELL FOXE

### RUSSELL FOXE

Initiated into Local Union 1245 on June 1, 1946. Currently employed as Service Operator at Bakersfield by PG&E. Is a member of Unit 1112 - Bakersfield. Currently Advisory Council Member for San Joaquin Division, Chairman of Unit 1112, having served in that capacity since 1968, and has been a Shop Steward 1948-52 and 1967 to present. Member of Gas Servicemen's Interim Committee, 1970, and Service Operator's Interim Committee, 1971. Delegate Kern, Inyo & Mono Counties Central Labor Council since 1969 and member and coordinator of the Kern, Inyo & Mono Counties Committee on Political Education since 1970.



JAMES F. WILBURN

### JAMES F. WILBURN

Initiated by Local Union 1011 in 1955 and deposited traveling card in Local Union 1245 on April 1, 1962. Is employed by PG&E as a Communication Technician at Fresno. Is a member and Chairman of Unit 1111, - Fresno. Served as Vice Chairman, 1969-72 and is a Shop Steward. Is a delegate to the Fresno-Madera Central Labor Council since 1970. Has served on various Local Union elections and ballot committees. Is a member of the 1973-74 PG&E Wage and Contract Negotiating Committee and the Technician's Interim Negotiations Committee.

### ADVISORY COUNCIL MEMBER - COAST VALLEYS DIVISION OF P.G.&E., CITY OF LOMPOC, TELEPROMPTER OF LOMPOC, TELEPROMPTER OF SANTA MARIA

### ROYCE R. HERRIER

Initiated into Local Union 1245 on October 1, 1949. Currently employed as a Fitter by PG&E at Salinas and a member of Unit 1211 - Salinas. Present Advisory Council Member, Coast Valleys Division, having served since 1965. Has served as Unit Recorder of Unit 1211, 1963-67 and

### Santa Maria (cont'd)



ROYCE R. HERRIER

1958 to present, a Shop Steward since 1953; member Coast Valleys Division Joint Grievance Committee since 1955 and is presently Chairman; served on Gas Subcommittee of PG&E Wage and Contract Negotiating Committee, 1966; attended Local Union Conferences 1958, 1962, and Konocti Conference 1969 and Claremont Conference, 1971. Delegate to Northern Electrical Conference in 1968 and the Inter-Union Gas Workers Conference, 1972.

### RICHARD N. MANLEY

Initiated by Local Union 1245 on December 1, 1964. Is employed by PG&E as a Line Subforeman in Salinas. Is a member of Unit 1211 - Salinas. Has served as a Vice Chairman of Unit 1212 - Monterey and is a Shop Steward. Served on the Committee on the Safety of "Crowning" Bells - Climbing Down Strain Insulators.

### JAMES R. SCHNEIDER

Initiated by Local Union 1245 on April 1, 1960. Is employed by PG&E as a Lineman at Hollister. Is a member and Vice Chairman of Unit 1219, Hollister.



MAURO R. VELA

### MAURO R. VELA

Initiated by Local Union 1245 on August 1, 1971. Is employed by PG&E as an Apprentice Fitter at Monterey. Is a member and Chairman of Unit 1212 - Monterey and a Shop Steward.

### ADVISORY COUNCIL MEMBER - PIPE LINE OPERATIONS DEPARTMENT AND CALIFORNIA- PACIFIC UTILITIES COMPANY - NEEDLES DIVISION

### RUBEN ARRENDONDO

Initiated by Local Union 1245 on October 1, 1952. Is employed by PG&E as a Sr. Compressor Plant Operator at Hinkley. Is a member of Unit 1311 - Barstow and a Shop Steward.



RUBEN ARRENDONDO

### ROBERT E. WATTS

Initiated into Local Union 1245 on July 1, 1961. Currently employed as a Pipeline Mechanic by PG&E at Rosedale Station and is a member of Unit 1112 - Bakersfield. Is the Advisory Council Member - Pipeline Operations and a Shop Steward.

### CITY OF SANTA CLARA, TELEPROMPTER OF LOS GATOS, TELEPROMPTER OF SANTA CRUZ



DENNIS LYLE AILOIR

### DENNIS LYLE AILOIR

Initiated by Local Union 1245 on May 1, 1966. Is employed by PG&E as a Lineman at Cupertino. Is a member of Unit 1511 - San Jose. Is a Shop Steward and has served as an alternate on the San Jose Joint Grievance Committee.

### JIMMY H. DANIELS

Initiated by Local Union 1245 on November 1, 1970.

### DAVID VERNON HARTLEY

Initiated by Local Union 1245 on May 1, 1952.

### HAROLD E. STOUT

Initiated by Local Union 1245 on March 1, 1965. Is employed by PG&E as a Gas Serviceman in San Jose. Is a member of Unit 1511 - San Jose. Has been Unit Vice Chairman and a Shop Steward.

### ADVISORY COUNCIL MEMBER - EAST BAY DIVISION AND MATERIALS DISTRIBUTION OF P.G.&E., STANDARD PACIFIC GAS LINE, INC., X-RAY ENGINEERING COMPANY, CONCORD T.V. CABLE, TELEPROMPTER OF MILPITAS, TELE-VUE SYSTEMS, INC., BAY CABLEVISION



JAMES MCCAULEY

### JAMES MCCAULEY

Initiated by Local Union 1245 on March 1, 1960. Is employed by PG&E as a Light Crew Foreman at Oakland. Is a member of Unit 2311 - Oakland. Member of the Unit Executive Committee since 1969. Chairman Unit 2311 Social Club 1971-72. Chairman Unit 2311 Dance Committee - 1971. Is a Shop Steward and member of the East Bay Division Joint Grievance Committee. Is a member of the 1973-74 PG&E Wage and Contract Negotiating Committee. Was a delegate to the Long Island Lighting Fair Finding Trip, Long Island, New York. Attended the Claremont Conference.

### ADVISORY COUNCIL MEMBER - SAN FRANCISCO DIVISION AND GENERAL OFFICE OF P.G.&E., WESTERN T.V. CABLE

### JAY H. BURTON

Initiated into Local Union 1245 on May 1, 1956. Currently employed by PG&E as Light Crew Foreman at San Francisco and is a member of Unit 2412 - San Francisco. Is the Advisory Council Member - San Francisco and General Office and Recorder of Unit 2412. Has been a Shop Steward since 1970 and is a member of San Francisco Division Joint Grievance Committee. Attended Local Union Conference in 1966 and the Claremont Conference.

### PROJECT AND CITY OF LODI

### PATRICK S. NICKESON

Initiated by Local Union 1245 on March 1, 1965. Is employed by PG&E as a Gas Serviceman in Stockton. Member of Unit 2511 - Stockton. Is a Shop Steward and Member of Stockton Division Joint Grievance Committee. Has served as alternate for Advisory Council Member.

### ADVISORY COUNCIL MEMBER - ALAMEDA- CONTRA COSTA TRANSIT DISTRICT AND EAST BAY MUNICIPALITIES

(No Candidates)

### ADVISORY COUNCIL MEMBER - SACRAMENTO REGIONAL TRANSIT DISTRICT

### WILFRED NUNEZ

Initiated by Local Union 1245 on February 1, 1962.

### ADVISORY COUNCIL MEMBER - PACIFIC GAS TRANSMISSION COMPANY

### ALEXANDER M. ADAMS

Initiated by Local Union 1245 on February 1, 1963. Is employed by Pacific Gas Transmission as a Senior Clerk at Redmond, Oregon. Is a member of Unit 3024 - Redmond, Oregon.



FRANK R. LOCATI

### FRANK R. LOCATI

Initiated into Local Union 1245 on May 1, 1963. Currently employed by Pacific Gas Transmission as a Mechanic at Wallula, Washington. Member of Unit 3023 - Walla Walla, Washington. Is the Advisory Council Member for Pacific Gas Transmission. Has served as Recorder since 1962. Has been a Shop Steward since 1962, member of PGT's Negotiating Committee from 1966 to present and is Chairman of Pacific Gas Transmission Joint Grievance Committee.

### ADVISORY COUNCIL MEMBER - HUMBOLDT DIVISION



WILLIAM P. BUTRICA

### WILLIAM P. BUTRICA

Initiated by Local Union 1245 on February 1, 1965. Is employed by PG&E as a Lineman at Garberville. Is a member of Unit 3112 - Garberville. Has served as Unit Chairman since 1969.

### JOHN H. GRANT, JR.

Initiated by Local Union 1245 on August 1, 1961. Is employed by PG&E as a Gas Mechanic at Eureka. Is a member of Unit 3111 - Eureka. Is a Shop Steward and member of the Humboldt Division Joint Grievance Committee.

### JIMMY S. RUSSEL

Initiated by Local Union 1245 on December 1, 1961. Is employed by PG&E as a T&D Driver at Eureka. Is a member



JIMMY S. RUSSEL

of Unit 3111 - Eureka. Is a member of the Unit Executive Committee and served as Recorder, 1969-71. Is a Shop Steward.



RAYMOND R. SKIDMORE

**RAYMOND R. SKIDMORE**

Initiated by Local 1245 on October 1, 1953. Is employed by PG&E as a Control Technician at Humboldt Bay Power Plant. Is a member of Unit 3111 - Eureka and served as Unit Recorder, 1959-61. Was a Shop Steward from 1958 to 1967. Served on Steam Maintenance Advisory Committee, 1958-62; Steam Department Interim Negotiating Committee, 1958-62; Committee on Control Technician Job Definition, 1969-70. Was a member of Unit 3111 Joint Pole Dance Committee, 1961-62. Attended Local Union Conferences, 1958-59.

**ADVISORY COUNCIL MEMBER - SHASTA DIVISION, CITY OF REDDING, AND CALIFORNIA-PACIFIC UTILITIES COMPANY - LASSEN DIVISION**

**TERRANCE L. SCOTT**

Initiated into Local Union 1245 on December 1, 1961. Currently employed by PG&E as a Lineman at Redding and is a member of Unit 3212 - Redding. Current Advisory Council Member for Shasta Division and the City of Redding, having served in that capacity since 1965. Served as a member of Executive Committee of Unit 3212 in 1966, Vice Chairman in 1967 and Unit Recorder in 1968. Has been a Shop Steward since 1965, member of Shasta Division Joint Grievance Committee since 1965 and was delegate to the Five-Counties Central Labor Council in 1965. Delegate to California Labor Federation AFL-CIO Convention, 1972. Member of 1973 E.E.O.C. Compliance Committee.

**ADVISORY COUNCIL MEMBER - SIERRA PACIFIC POWER CO., TELEPROMPTER OF RENO, TRUCKEE-DONNER PUBLIC UTILITY DISTRICT, CALIFORNIA PACIFIC UTILITIES CO.-WINNEMUCA, MT. WHEELER POWER, INC.**



JAY RUSSELL KILLGORE

**JAY RUSSELL KILLGORE**

Initiated by Local Union 1245 on July 1, 1963. Is employed by the Sierra Pacific Power Company as a Gas Serviceman in Reno, Nevada. Is a member of Unit 3311 -

**SIERRA PACIFIC POWER CO.-WINNEMUCA, MT. WHEELER POWER, INC. (cont'd)**

Reno, serving as Unit Recorder - 1967 to 1969 and 1971 to present. Was a Shop Steward 1966-68 and served on Gas and Water Interim Negotiating Committee in 1973 and is a member of the Sierra Pacific Power Company Negotiating Committee. Attended Local Union Conference in 1967 and 1971.

**ADVISORY COUNCIL MEMBER - DE SABLE DIVISION OF P.G.&E., STATE T.V. CABLE**

**JAMES LEWIS DIETZ**

Initiated by Local Union 1245 on December 1, 1961.

**ADVISORY COUNCIL MEMBER - DRUM DIVISION OF P.G.&E., PLUMAS-SIERRA RURAL, ELECTRIC COOPERATIVE, CITY OF ROSEVILLE, PLACER COUNTY WATER AGENCY**

**STANLEY P. JUSTIS**

Initiated by Local Union 1245 on January 1, 1947. Is employed by PG&E as a Troublemaker at Auburn. Is a member of Unit 3511 - Auburn. Is the present Advisory Council Member having served since 1958. Recorder of Unit 3511, 1955-58; Unit Chairman, 1958-60; Unit Vice-Chairman 1971 to present. Was a Shop Steward 1957-64 and has been a member of the Drum Division Joint Grievance Committee since 1967. Served as member of the Local Union Bylaws Committee in 1971 and has attended all Local Union Conferences since 1958.

**VICTOR L. PATTON**

Initiated by Local Union 1245 on April 1, 1963. Is employed by PG&E as a Lineman at Grass Valley. Member of Unit 3515 - Grass Valley.

**ADVISORY COUNCIL MEMBER - COLGATE DIVISION OF P.G.&E., YUBA COUNTY WATER AGENCY**



ARLIE L. BAKER

**ARLIE L. BAKER**

Initiated by Local Union 1245 on August 1, 1960. Is employed by PG&E as a Lineman at Oroville. Is a member of Unit 3613 - Oroville. Served as Unit Chairman for 3 terms. Is a member of the Colgate Division Joint Grievance Committee and a Shop Steward. Served as a member of the Lead-Lineman Subcommittee of the 1973-74 Wage and Contract Negotiating Committee.

**ADVISORY COUNCIL MEMBER - NORTH BAY DIVISION OF P.G.&E., CITY OF UKIAH, CITY OF HEALDSBURG, TELEPROMPTER OF UKIAH, WILLITS AND FT. BRAGG, AND M.G.M. CABLE T.V. INSTALLATION COMPANY**

**ART A. FAHRNER**

Initiated by Local Union 1245 on August 1, 1963.

**MARSHALL S. PROSCHOLD**

Initiated into Local Union 1245 on September 1, 1959. Currently employed by PG&E as Lineman at Gagetownville and is a member of Unit 3712 - Santa Rosa. Is the present Advisory Council Member and is a member of the North Bay Division Grievance Committee. Shop Steward since 1962.



MARSHALL S. PROSCHOLD



GARY E. JOHNSON

**GARY E. JOHNSON**

Initiated by Local Union 1245 on June 1, 1966. Is employed by PG&E as a Lineman at Sacramento. Is a member of Unit 3811 - Sacramento and is a Shop Steward.

**JESSE K. TACKETT, JR.**

Initiated into Local Union 1245 on June 1, 1960. Is currently a Gas Serviceman for PG&E at Sacramento and is a member of Unit 3811 - Sacramento. Was Advisory Council Member, 1968 to 1971. Has served as member of Gas Serviceman Subcommittee and the Local Union Bylaws Committee. Is Recorder for Unit 3811 and attended the Konocti and Clarendon Conferences.

**WILLIAM TOMLINSON**

Initiated by Local Union 1245 on December 1, 1961.

**ADVISORY COUNCIL MEMBER - SACRAMENTO MUNICIPAL UTILITY DISTRICT**



ANTON SCHAFFNER

**ANTON SCHAFFNER**

Initiated by Local Union 1245 on January 1, 1962. Is employed by Sacramento Municipal Utility District as a Tree Trimmer. Is a member of Unit 3911 - S.M.U.D. and is the Unit Vice Chairman and a Shop Steward.

**ALVIN J. WOLF, JR.**

Initiated by Local Union 1245 on March 1, 1971.

**ADVISORY COUNCIL MEMBER - UNITED STATES BUREAU OF RECLAMATION, REGION II**

**LEROY C. FERGUSON**

Initiated by Local Union 1245 on April 1, 1968. Is employed by the U.S.B.R. as a Plant Mechanic at Shasta Dam. Is a member of Unit 3212 - Redding. Has been a Shop Steward since 1970 and Chief Shop Steward since 1972. Served on Divisional Craft Training Committee 1970-74; Regional Craft Training Committee, 1971-74; and a member of the U.S.B.R. Negotiating Committee 1972-74.

**WILLIAM R. MILLER**

Initiated into Local Union 659 on October 14, 1957. Deposited traveling card in Local Union 1248 on June 1, 1962. Is employed as Foreman III Lineman by

**ADVISORY COUNCIL MEMBER - CITIZENS UTILITIES COMPANY OF CALIFORNIA**

**PHILIP J. BLYTH**

Initiated by Local Union 1245 on January 1, 1970.

**ADVISORY COUNCIL MEMBER - GENERAL CONSTRUCTION OF P.G.&E.**

**RON KOSHMIEDER**

Initiated by Local Union 1245 on December 1, 1969.



ROGER STALCUP

**ROGER STALCUP**

Initiated by Local Union 1245 on July 1, 1966. Is employed by PG&E as a Field Clerk in General Construction at Wassonville. Is a member of Unit 1514 - San Jose Area General Construction. Shop Steward since 1966. Member and Chairman of General Construction Joint Grievance Committee. Member G. C. Field Office Operations Lines-of-Progression Committee and E.E.O.C. Title VII Compliance Committee.

**ADVISORY COUNCIL MEMBER - P.G.&E. CLERICAL-AT-LARGE**



JACK B. HILL

**JACK B. HILL**

Initiated into Local Union 1245 on May 1, 1966. Is employed by PG&E as a Clerk "B" in Mt. View. Is member and past chairman of Unit 1501 - San Jose Clerical. Is the Advisory Council Member - Clerical-at-Large. Is the Unit Vice Chairman and a Shop Steward. Was a member of Interim Negotiating Committees for Clerical Indicative Duties and Clerical Lines of Progression. Served on the 1972 P.G.&E. Wage Negotiating Committee and is a member of the 1973-74 PG&E Wage and Contract Committee and Clerical Cross-Hatch Committee.



RUBY E. JEFFERSON

**RUBY E. JEFFERSON**

Initiated by Local Union 1245 on December 1, 1971. Is employed by PG&E as a Clerk "C", Mill Valley. Is a member of Unit 3711 - San Rafael. Is a Shop Steward and completed the Shop Steward's Training Course, 6 classes, held in North Bay Division in 1972.

**JAMES R. WILLIAMSON**

Initiated by Local Union 1245 on February 1, 1970. Is employed by PG&E as a Clerk at Lakeport. Is a member of Unit 3715 - Lakeport. Is Unit Chairman and Shop Steward.

**ELECTRONIC DATA PRO-  
CESSING CENTER**



EDUARDO VALLEJO

**EDUARDO VALLEJO**

Initiated by Local Union 1245 on August 1, 1967. Is employed by PG&E as a Clerk "C" in General Office. Is a member of Unit 2401 - San Francisco Clerical. Has served as Unit Recorder and Unit Chairman and is a Shop Steward. Is a member and Chairman of the General Office Joint Grievance Committee. Served on the Clerical Lines of Progression Committee in 1971 and is a member of the

ferences. Served on two PG&E Wage and Contract Ballot Committees.

**ADVISORY COUNCIL  
MEMBER - TREE TRIMMERS**

**DALE L. GRAY**

Initiated by Local Union 1245 on July 1, 1969. Is employed by Davey Tree Surgery Company as a Foreman at Aptos. Is a member of Unit 1513 - Santa Cruz and a Shop Steward.



ALBERT C. SCHIFF

**ALBERT C. SCHIFF**

Initiated by Local Union 1245 on Sep-

**ADVISORY COUNCIL  
MEMBER - IRRIGATION  
DISTRICTS**



EARL DUANE BARTLOW

**EARL DUANE BARTLOW**

Initiated into Local Union 1245 on October 1, 1968. Currently employed as a Park Ranger by Merced Irrigation District at Barrett Cove Recreation Area. Is a member of Unit 1122 - Merced and a Shop Steward. Is the Advisory Council Member - Irrigation Districts and Vice Chairman of Unit 1122. Is a member of Unit Safety Committee.

Continued from page eight



ANTHONY M. ZAMMIT

**ANTHONY M. ZAMMIT**

Initiated by Local Union 1245 on April 1, 1952. Is employed by PG&E as a machinist at Station "T" in San Francisco. Is a member of Unit 2413 - San Francisco. Chairman of Unit 2412, 1962-1965 and 1967 to present and is a Shop Steward. Was a member of the Local Union Traveling Crew Committee and is a delegate to the San Francisco Labor Council.

**Candidates for International Convention**

**GARY W. ABRAHAMSON**

Initiated by Local Union 1245 on August 1, 1966. Is employed by PG&E as a Corrosion Mechanic at Oakland. Is a member of and Recorder for Unit 2311 - Oakland. Is the East Bay Advisory Council Member and a Shop Steward. Was a member of the Unit's annual dance committee, 1971-1973 and the Unit's social club, 1971 and 1973. Was a member of the Local Union Communication Committee and the Interim Committee for Fitters.

**ARLIE L. BAKER**

See Advisory Council-Colgate Division

**DEAN E. BARKDULL**

Initiated by Local Union 1245 on November 1, 1965.



RONALD R. BERSTEIN

**RONALD R. BERSTEIN**

Initiated by Local Union 1245 on October 1, 1964. Is employed by P.G.&E. as a Line Subforeman at Redwood City. Is a member of Unit 1512 - Belmont. Has served as Unit Chairman and is a Shop Steward. Was a member of the Local Union Election Committee in 1970 and the P.G.&E. Ratification Ballot Committee. Attended the Konociti Conference and is involved in courses dealing with Industrial Relations.

**RAYPHE BREWER**

Initiated by Local Union 1245 on May 1, 1969.

**HANSEL L. BURNS**

See Recording Secretary

**ROY CASTIGLIONI**

Initiated by Local Union 1245 on October 1, 1954. Is employed by P.G.&E. as a Line Subforeman at Santa Cruz. Is a member of Unit 1513 - Santa Cruz. Was Advisory Council Member, 1965-1968. Has served as Unit Vice Chairman, is a member of the Unit Executive Committee and a Shop Steward. Attended the Asilomar and Claremont conferences.



ROY CASTIGLIONI

**DEAN COFER**

Initiated by Local Union 1245 on December 1, 1963. Is employed by Local Union 1245 as a Business Representative, servicing DeSabra Division, C.U.C.C., C.P.U. - Lassen Division, State T.V. Cable and Paradise Irrigation District. Has served Members of General Construction and Sacramento and Colgate Division since 1966. Is a member of Unit 3417 - Paradise. Was a Shop Steward from 1963-1966 and was a Chief Shop Steward at McCouder Pit Project 1964-1966. Served as a member and Chairman of the General Construction Joint Grievance Committee and a member of the 1966 P.G.&E. Wage and Contract Negotiating Committee. Is a Delegate to the Butte Glenn Central Labor Council and was a delegate to the Sacramento Labor Council. Has served as Negotiating Committee spokesman for: Oroville-Wyandotte Irrigation District, Richvale Irrigation District, Thermalito Irrigation District, Yuba County Water Agency, Paradise Irrigation District, State T.V. Cable, C.P.U. - Lassen Division and C.U.C.C.

**JOHN D. COKER**

Initiated by Local Union 1245 on April 1, 1969.

**THOMAS C. CONWELL, JR.**

See Vice President.



MARK R. COOK

**MARK R. COOK**

Initiated by Local Union 465 on November 5, 1946. Deposited traveling

card in Local Union 1245 I.B.E.W. on January 1, 1952. Has been employed by Local Union 1245 as Business Representative since March, 1959. Served as a member of the Policy Committee, San Jose Division, San Jose Division Joint Grievance Committee and as a Shop Steward. Has served on the Health and Welfare Committee, Pension Committee Negotiations, and on the negotiating committees for California Pacific Utilities Company, the Tree Trimming Companies, the United States Bureau of Reclamation, the City of Lompoc, the Cable Television Companies of Teleprompter, both clerical and physical for Santa Maria and Lompoc, Monterey Peninsula Cable Television Company, California Communications Cable Corporation, and Ocean View Cable Corporation. Has been a delegate to the Northern California Joint Executive Conference Bay Area Health and Welfare Conference, Governor's Industrial Safety Conference, and the Los Angeles Central Labor Council's Conference on Atomic Energy. Is a graduate of the I.B.E.W.'s Ninth Institute for Instructors, Industrial Atomic Energy Users, Hazards and Controls. Is currently assigned as Business Representative to Coast Valleys Division of the Pacific Gas and Electric Company. Was elected as a delegate to the International Convention, I.B.E.W., in 1970.

**JIMMY H. DANIELS**

See Advisory Council - San Jose Division

**HOWARD DARINGTON**

See President.

**RICHARD L. DAUGHERTY**

Initiated by Local Union 1245 on February 5, 1953.

**THOMAS C. DOTTER**

Initiated by Local Union 1245 on August 1, 1965. Is employed by the Pacific Gas & Electric Company as a Working Foreman "B" in General Construction at Hayward. Is a member and Chairman of Unit 2312 - East Bay Area General Construction. Is a Shop Steward and a member of the General Construction Committee on Lines of Progression.

**RICHARD L. DUNKIN**

Initiated by Local Union 1245 on September 1, 1967.



PETER R. DUTTON

**PETER R. DUTTON**

Initiated by Local Union 1245 on May 1, 1961. Is employed by Local Union 1245 as a Business Representative currently assigned to Stockton Division of PG&E, Tri Dam Project, Oakdale Irrigation District, Turlock Irrigation District and Pacific Tree. Formerly Assigned to East Bay Division of PG&E, Concord Cable T.V. and Tele-Vue of Dublin. Is a member of Unit 2515 - Modesto. Former member of Unit 2316 in Concord where he was Unit Chairman in 1967. He has served in the PG&E Steam Department Negotiating Committee, was chairman of the Concord Cable T.V., Tele-Vue of Dublin, Tri Dam Project, Oakdale Irrigation and Turlock Irrigation Negotiation Committees. Has been a delegate to Alameda County Central Labor Council, Contra Costa County Central Labor Council ("E" Board member) and Stanislaus-Tuolumne Central Labor Council ("E" Board member, Trustee and currently President). Is now serving as Labor Representative on the Personnel Commission for the City of Modesto. Attended the Huntley School of Labor-Management in Berkeley. Has attended many AFL-CIO and I.B.E.W. Conferences and Seminars dealing with OSHA, the Utility Industry and Public Employment Collective Bargaining.

**JOSEPH FERNANDEZ**

Initiated by Local Union 1245 on December 1, 1960.



EDWARD A. FORTIER

**EDWARD A. FORTIER**

Initiated by Local Union 1245 on April 1, 1965. Is employed by Local Union 1245 as a Business Representative in Drum Division and formerly serviced Humboldt Division. Is a member of Unit 3513 - Grass Valley. Was Chairman and Recorder of unit 1511 - San Jose and served as a Shop Steward from 1965 to 1971. Served as an alternate to the San Jose Division Joint Grievance Committee. Was a member of Unit 1511 Annual Dance Committee. Negotiating Committee member Nevada Irrigation District, Placer County Water Agency and City of Roseville. Attended the Local Union Conferences at Konociti and Claremont. Attended the American Arbitration Seminar, 1971, Seminar on Wage-Price Controls, U. C. Berkeley, 1971, and Seminar on Pensions and Benefit Negotiations, U.C. Berkeley, 1974.

**MYRON J. GOMES**

See Executive Board-At-Large



WILLIAM JACK GRAVES

### WILLIAM JACK GRAVES

Initiated by Local Union 1245 on March 1, 1953. Currently employed as Line Subforeman by PG&E in San Luis Obispo. Member of Unit 1215 in San Luis Obispo. Is the Executive Board Member - Southern Area. Chairman of Unit 1215 San Luis Obispo, 1966-1968; Vice Chairman 1968-1970. has served as a Shop Steward since 1959 in Bakersfield, Wasco and San Luis Obispo; member of the Local Union Ways and Means Committee 1971-1974. Has been a delegate to California State Association of Electrical Workers Conferences, a California Labor Federation Convention; and I.B.E.W. Utility Conference. Attended a LAMPAC meeting and the Center for Health Studies at Asilomar.



DENNIS WILLIAM IKERD

Clerk in San Jose. Is a member of Unit 1501 - San Jose. Is Chairman of Unit 1501 and was Vice Chairman and is a Shop Steward.

### GEORGE A. JACKSON

Initiated by Local Union 1245 on April 1, 1969.

### CARL F. KELLY

See Executive Board - Northern Area.

### WILLIAM M. KENNEDY

Initiated by Local Union 1324 on December 1, 1948.

### WILLIAM B. KLINE

See Executive Board - Southern Area.

### DEMETRIUS "JIM" KOSTA

Initiated by Local Union 1245 on June 1, 1968.

### JOE KROPHOLLER

Initiated by Local Union 1245 on May 1, 1967.

### WARREN E. LARMER

Initiated by Local Union 1245 on July 1, 1967.

### WILLIAM J. LAW

Initiated by Local Union 1245 on June 1, 1968.

### RONALD JAMES LIVENGOD

Initiated by Local Union 1245 on November 1, 1951. Is employed by PG&E as a Line-Subforeman in Colusa. Is a member of Unit 3611 - Marysville and is the Unit Recorder, having served for 12 years. Is the Advisory Council Member - Colgate Division.



KENNETH O. LOHRE

### KENNETH O. LOHRE

Initiated by Local Union 1245 on December 1, 1965. Is employed by Local Union 1245 as a Business Representative. Is a member of Unit 2317 - Antioch. Was Chairman of Unit 1501, San Jose, and a Shop Steward, 1967-1968. Was a member of the Clerical Indicative Duties Negotiating Committee and a member of the Clerical Advisory Job Protection Committee. Has been a delegate to the San Francisco Central Labor Council, 1969-1973; delegate to the Alameda County Central Labor Council, 1974 to present; Delegate to Contra Costa County Central Labor Council, 1973 to present; Vice-President of Western Labor Press Association, 1972 to present; Delegate to five W.L.P.A. conventions. Delegate to the AFL-CIO Organizing Conference in St. Louis, 1971. Attended the I.B.E.W. Utility Conference - 1973.

### HENRY B. LUCAS

Initiated by Local Union 1245 on October 1, 1952. Is employed by Local Union 1245 as a Business Representative. Is a member of Unit 2514 - Tracy. Was Local Union Recording Secretary; Advisory Council Member - Humboldt Division;



HENRY B. LUCAS

Chairman, Vice Chairman and Recorder of Unit 3111 - Eureka and a member of that Unit's safety and Social committees. Was a Shop Steward in Humboldt Division and San Jose Division. Was a delegate to the I.B.E.W. International Conventions in 1958, 1962, 1966 and 1970. Is a delegate to the San Joaquin-Calaveras Counties Central Labor Council and was a delegate to the Humboldt Labor Council. Was a member of the Apprentice Electrical Machinist Negotiating Committee in 1968. Is present Chairman of Union Negotiating Committees for U.S.B.R., City of Lodi, Pacific Tree Expert Co., and Utility Tree Service Inc. Attended all Local Union Conferences since 1955.

### JAMES M. LYDON

See Recording Secretary

### EDWARD V. LYNCH

Initiated by Local Union 1245 on August 1, 1955.

### IVAN J. LYNCH

Initiated by Local Union 1245 on July 1, 1962.



WARREN G. MANLEY

### WARREN G. MANLEY

Initiated by Local Union 1245 on April 1, 1963. Is employed by PG&E as a Gas Mechanic in San Francisco. Is a member of Unit 2412 - San Francisco and is a Shop Steward. Served on the Gas Interim Negotiating Committee and is a member of the 1973-74 PG&E Negotiating Committee.

### GUY E. MARLEY

See Executive Board - At Large



MICHAEL R. MCCARTHY

### MICHAEL R. MCCARTHY

Initiated by Local Union 1245 on August 1, 1970. Is employed by PG&E as a clerk "D", San Jose. Is a member of Unit 1501 - San Jose Clerical.

### JAMES MCCAULEY

See Advisory Council - East Bay Division

### ROBERT C. MCKRAY

Initiated by Local Union 1245 on April 1, 1947. Is employed by PG&E as a Troublemaker at Redding. Is a member of Unit 3212 - Redding. Has served as Unit Chairman and Unit Recorder. Attended Local Union Conferences at Asilomar and Oakland.

### JACK K. MCNALLY

Initiated by Local Union 1245 on Oc-

tober 11, 1953 - Merced, and was a Shop Steward. Was a member of the Local Union Job Protection Committee for the Electric Department. Served as a delegate to the Merced-Mariposa Central Labor Council and the Alameda County Central Labor Council. Is currently a delegate and Executive Board member of the Contra Costa County Central Labor Council. Was a member of the 1972 PG&E Wage Negotiating Committee and Spokesman for the 1973-1974 PG&E Pension and Benefit committee. Was a delegate to the 1971 and 1973 I.B.E.W. Utility Conferences and the 1972-1973 I.B.E.W. Ninth District Progress meetings. Is a member of the Advisory Committee to the Examining Committee.

### JAMES ROBERT MCNEIL

Initiated by Local Union 1245 on May 1, 1962.

### MANUEL A. MEDEROS

See Executive Board - Central Area

### L. L. MITCHELL

See Business Manager - Financial Secretary.

### LARRY E. MONEYPENNY

Initiated by Local Union 1245 on July 1, 1967.

### THOMAS F. MULROONEY

Initiated by Local Union 1245 on June 1, 1965.



WILLIAM K. NATA

### WILLIAM K. NATA

Initiated by Local Union 1245 on October 1, 1964. Is employed by Local Union 1245 as a Business Representative in East Bay Division. Is a member of Unit 2315 - Livermore. Was Vice Chairman of Unit 3711 - Marin County, a member of the North Bay Division Grievance Committee and a Shop Steward. Is a delegate to the Marin County Central Labor Council and the Alameda County Central Labor Council. Member of the Davy Tree Surgery Negotiating Committee.

### STUART E. NEBLETT

Initiated by Local Union 1245 on May 1, 1968.

### JACQUELINE A. OFFERSON

See Executive Board - Central Area



ORVILLE OWEN

### ORVILLE OWEN

Initiated by Local Union 1245 on March 1, 1952. Has been employed by Local Union 1245 as a Business Representative since 1963. Member of Unit 1511 - San Jose. Has served as Local Union Treasurer, Advisory Council Member - Sierra Pacific Power Company. Is a delegate to the Santa Clara County Central Labor Council. Has been a delegate to Nevada State AFL-CIO Conventions and is a member of the Santa Clara County Organizing Committee. Was a member of the Sierra Pacific Power Co. Joint Grievance Committee and served on SPP Co. Negotiating Committees. Is a member

### JAMES W. "BUD" GRAY

See Executive Board - Southern Area

### LEON L. GROVER

Initiated by Local Union 1245 on May 1, 1972.



ROSE MARY GUELLE

### ROSE MARY GUELLE

Initiated by Local Union 1245 on July 1, 1972. Is employed by Local Union 1245 as a Secretary. Member of Unit 2318 - Walnut Creek. Member of Office Clerical Employee's Negotiating Committee, 1972.

### MICKEY HARRINGTON

See Business Manager - Financial Secretary

### DAVID VERNON HARTLEY

See Advisory Council - San Jose Division

### C. P. "RED" HENNEBERRY

See Vice President.

### ROYCE R. HERRIER

See Advisory Council - Coast Valleys Division.

### JACK B. HILL

See Advisory Council - Clerical at Large.

### KATHLEEN E. HILL

Initiated by Local Union 1245 on May 1, 1969. Is employed by PG&E as a Clerk "C" in San Jose. Is a member of and Recorder for Unit 1501 - San Jose Clerical. Is a Shop Steward.

### E. M. "BUFFALO" HORN

See Vice President.

### THOMAS G. HUTCHINSON

Initiated by Local Union 1245 on May 1, 1965. Is employed by PG&E as a Lineman in Santa Cruz. Is a member of and Recorder for Unit 1513 - Santa Cruz. Was Chairman of Unit 1513's Proposal Committee for 1974 Negotiating Session and is a Shop Steward.

### DENNIS WILLIAM IKERD

Initiated by Local Union 1245 on March 1, 1967. Is employed by PG&E as a "C"

Tree Expert Co., Sohner Tree Service Inc., Utility Tree Service Inc., Teleprompter of Los Gatos and Teleprompter of Santa Cruz. Attended the Rocky Mountain Labor School and the Labor Studies Center course in Labor Law.

**WILLIAM H. PEITZ**

See Executive Board - Northern Area

**FRANK W. POE**

Initiated by Local Union 1245 on April 1, 1967.

**RONNIE POWELL**

Initiated by Local Union 1245 on May 1, 1964.



FRANK A. QUADROS, JR.

**FRANK A. QUADROS, JR.**

Initiated by Local Union 1245 on August 1, 1952. Is employed by Local Union 1245 as a Business Representative in San Francisco. Is a member of Unit 2412 - San Francisco. Was a member and Chairman of the San Francisco Division Joint Grievance Committee and a Shop Steward. Was a member of the PG&E Wage and Contract Committee and the PG&E Negotiating Committee for Gas Department Job Definitions and Lines of Progression. Is a delegate to the San Francisco Labor Council. Attended the I.B.E.W. Ninth Institute for Instructors Industrial Atomic Energy Uses, Hazards and Controls, and the University of California Conference on Collective Bargaining, 1973. Was a delegate to the 1970 I.B.E.W. International Convention.

**HENRY E. RAMSEY**

Initiated by Local Union 1245 on February 1, 1971.



DAVID H. REESE

**DAVID H. REESE**

Initiated by Local Union 1245 on July 1, 1956. Is employed by Local Union 1245 as a Business Representative. Is a member of Unit 2315 - Livermore. Was Advisory Council Member - Sacramento Division. Served as Recorder and Chairman of Unit 3812 - Vacaville and as a Shop Steward. Was a member of the Sacramento Division Grievance Committee and a member of the Local Union Safety Advisory Committee. Is a delegate to the Contra Costa County Central Labor Committee and a delegate to and an Executive Board member of the Alameda County Central Labor Council. Is a member of the California-Nevada Line Constructors Apprenticeship Committee and has served as Chairman and Secretary thereof. Is a member of the Statewide Apprenticeship Committee for the Electrical Industry. Member of the California State Association of Electrical Workers Apprenticeship Committee and Secretary of the Safety Committee. Was a member of the Governor's Industrial Safety Conference. Member of the Advisory Committee to the Local Union Examining Committee and was a member of the Local Union Safety Advisory Committee. Member of the X-Ray Engineering Company Negotiating Committee. Currently serving on Advisory Committee to the Electrical and Boiler Sections of the California Division of Industrial Safety. Was a delegate to the I.B.E.W. Utility conference in 1973 and the AFL-CIO Organizing Conference in St. Louis in 1971. Is a Task Force member of the Center for Health Studies and a member of the Advisory Committee of the Occupational Health and Safety Project, University of California at Berkeley.

**RICHARD D. ROBUCK**

See Treasurer

**JOHN M. RODGERS, JR.**

Initiated by Local Union 1245 on August 1, 1969.

**PERCY R. ROME**

Initiated by Local Union 1245 on October 1, 1954.

**JOHN G. ROMERO**

Initiated by Local Union 1245 on March 1, 1960.



DOUGLAS F. RUNKLE

**DOUGLAS F. RUNKLE**

Initiated by Local Union 1245 on January 1, 1971. Is employed by PG&E as a Relief Auxiliary Operator at Oilcum Power Plant. Is a member of Unit 2316 - Concord and a Shop Steward.

**JIMMY S. RUSSEL**

See Advisory Council - Humboldt Division

**ALBERT E. SANDOVAL**

Initiated by Local Union 1245 on January 1, 1966.

**WILLIAM A. SHUETT**

Initiated by Local Union 1245 on July 1, 1964.

**JOSEPH A. SCIORTINO**

Initiated by Local Union 1245 on July 1, 1967.

**TERRANCE L. SCOTT**

See Advisory Council - Shasta Division

**BILLY L. SHAW**

Initiated by Local Union 1245 on January 1, 1955.

**JACK D. SIMMONS**

Initiated by Local Union 1245 on April 1, 1969.

**ROBERT SORENTRUE**

Initiated by Local Union 1245 on November 1, 1969.

**ROGER STALCUP**

See Advisory Council - General Construction.



VEODIS STAMPS

**VEODIS STAMPS**

Initiated by Local Union 1245 on June 1, 1962. Is employed by Local Union 1245 as a Business Representative in East Bay Division. Is a member of Unit 2211 - Oakland General. Has served as an Advisory Council Member - A/C Transit and East Bay Municipalities and as a Shop Steward. Is a member of Negotiating Committees for the cities of Alameda, Berkeley, and Oakland. Has been a delegate to the National A. Phillip Randolph Institute, California Labor

and Urban Studies Program on a full-time basis in 1970 and participated in the Hurley Management and Industrial Relations Program.



STANLEY J. STENSURD

**STANLEY J. STENSURD**

Initiated by Local Union 1245 on June 1, 1968. Is employed by PG&E as a Working Foreman "C" in General Construction at Oakland. Is a member of Unit 2312 - East Bay Area General Construction. Served as Recorder of the Hayward Unit. Is a member of the Executive Committee Unit 2312. Is a Shop Steward and a member of the General Construction Joint Grievance Committee. Was a member of the 1972 PG&E Wage Negotiating Committee. Is a member of the 1973-74 Wage & Contract Negotiating Committee and the General Construction Lines of Progression Committee.



WILLIE R. STEWART

**WILLIE R. STEWART**

Initiated by Local Union 1245 on November 1, 1960. Is employed by Local Union 1245 as a Business Representative in Shasta Division. Is a member of Unit 3211 - Red Bluff. Was an Executive Board Member at Large and a Shop Steward 1965-71. Was a member of General Construction Department Joint Grievance Committee since 1967 and as Chairman since 1968. Member of Data Processing Centers Negotiating Committee 1967 and 1968. Chairman General Construction Subcommittee - PG&E Contract Negotiations, 1970; Chairman special negotiating committee for G.C. Lines of Progression, 1971. Was a member of the Local Union Political Education and Communications Committees. Was a delegate to California Labor Federation AFL-CIO Convention and to California COPE Conventions in 1972.

**SHIRLEY M. STOREY**

Initiated by Local Union 1245 on February 1, 1959. Is employed by Local Union 1245 as a Business Representative. Is a member of Unit 2401 - San Francisco Clerical. Was a member of the San Jose Division Joint Grievance Committee and a Shop Steward. Served on PG&E Clerical Negotiating Committee and was a member of the Clerical Advisory Job Protection Committee. Was a delegate to the I.B.E.W. International Conventions in 1966 and 1970. Is a delegate to the San Francisco Labor Council.

**HAROLD E. STOUT**

See Advisory Council - San Jose Division.

**BARBARA J. SYMONS**

Initiated by Local Union 1245 on June 1, 1968.

**RONALD D. TANBERG**

Initiated by Local Union 1245 on June 1, 1963.

**BETTY J. THOMAS**

See Recording Secretary

**LELAND THOMAS JR.**

See President

**TOMMY A. THOMPSON**

Initiated by Local Union 1245 on January 1, 1961. Is employed by PG&E as a Line Subforeman at Hollister. Is a member of Unit 1219 - Hollister.

**DALE TURMAN**

See Executive Board - Northern Area

**EDUARDO VALLEJO**

See Advisory Council - S.F.E.D.P. Center

**CURTIS P. VANDERBUNDT**

Initiated by Local Union 1245 on August 1, 1964.



MERTON A. WALTERS

**MERTON A. WALTERS**

Initiated by Local Union 1324 on November 1, 1948. Is employed by Local Union 1245 as Senior Assistant Business Manager. Was an Assistant Business Manager and a Business Representative and has served as Local Union Vice President; Vice Chairman of Belmont Unit, and as a Shop Steward. Has been a member of numerous negotiating committees representing Local Union 1245 members with most Local Union 1245 employer groups. Is a delegate to the Alameda County Central Labor Council. Was a delegate to I.B.E.W. International Conventions in 1958, 1962, 1966, and 1970. Has been a delegate to California Labor Federation, AFL-CIO Conventions; California Political Education Conventions; California State Association of Electrical Workers; Northern, Central Valley and Southern Joint Executive Conferences, I.B.E.W.; California Association of Consumers; Governor's Industrial Safety Conferences; I.B.E.W. National Telephone Conference; Public Employees Council of California. Has represented Local Union 1245 before the California Public Utilities Commission, The California Industrial Safety Board and the United States Atomic Energy Commission. Has served on advisory committees to the Electrical, Construction and Boiler Sections of the California Division of Industrial Safety, the California Division of Industrial Welfare and the California Building Standards Commission. Was Chairman of the California Labor Federation's Committee on Public Employment. Is a member of the Advisory Committee to the Local Union Examining Board and a member of the Local Union Safety Committee. Is the Local Union Registrar and the Local Union's Legislative Advocate before the California State Legislature. Attended the National Institute of Labor Education, Resident Study Course, University of California.

**ALEXANDER WASHINGTON**

See Executive Board at Large.



SHIRLEY J. WASHINGTON

**SHIRLEY J. WASHINGTON**

Initiated by Local Union 1245 on December 1, 1971. Is employed by PG&E as a Customer Service Clerk in San Rafael. Is a member of Unit 3711 - Marin County and is a Shop Steward.

**CORBETT WHEELER**

Initiated by Local Union 1245 on June 1, 1969.

**JAMES F. WILBURN**

See Advisory Council - San Joaquin Division.

**R. L. WITHROW**

Initiated by Local Union 1245 on June 1, 1955.

Continued on page six