

Vote in Your Union Election . . .  
Vote in the California Primary, June 7

# Utility Reporter

Official Publication of I. B. E. W. Local Union 1245, AFL-CIO, 1918 Grove Street, Oakland 12, Calif.

VOL. VIII — No. 1

OAKLAND, CALIFORNIA

MAY, 1960

## YOUR Business Manager's COLUMN

(Editor's Note: Business Manager Weakley has relinquished his column space in this issue in order to offer our readers the following excellent column written by Business Manager Andrew F. Harvey of I.B.E.W. Local No. 124, Kansas City, Missouri.)

### "HUMAN, PUBLIC RELATIONS"

Human and public relations is a much discussed subject, but few have a complete understanding of what it means. For an illustration, human relations would embrace development of an individual's personality, while public relations would suggest adjusting attitudes and actions between ourselves and the people we meet in our daily lives. So, we believe that human relations become public relations and that the two terms could become synonymous.

This subject is applicable to the individual's success no matter in what field of employment he or she is engaged. All of us are striving for harmony on the job, and in our home life, but many of us do not realize that we ourselves can do much towards making it a reality. For example, the ability to deal with other people in our work, and in our outside activities, is a valuable contribution to a successful life. In order to properly adjust ourselves it becomes paramount that we gain the respect, the confidence, and the cooperation of others, whether they be members of our family, neighbors, business associates, or friends. No matter what our dreams are, whether or not they come true depends largely on how we get along with others.

The old adage that "no one can succeed by his own efforts alone" applies to all of us. Often we ignore, because of our personal dislikes, those people who might be an inspiration to us when we need them most.

Aesop was a Greek slave who lived and spun immortal fables six hundred years before Christ. Yet the truths he taught about human nature are just as true now, in Kansas City, Missouri, as they were twenty-five centuries ago in Athens. The sun can make you take off your coat more quickly than the wind; and kindness, the friendly approach, and appreciation, can make people change their minds more readily than all the bluster and storming in the world. Remember what Lincoln said: "A drop of honey catches more flies than a gallon of gall."

For instance, in talking with  
(Continued on Page 7)

## P.G.&E. Negotiations Now On

### TO HEAR COMPANY COUNTER PROPOSALS AT MAY MEETINGS

The Union's proposals for amendments to the Agreement between Local 1245 and the Pacific Gas and Electric Company were submitted to the Company on April 28. Negotiating Committees for the Union and Company met on May 4 and 5 in the first session of the 1960 Negotiations.

The proposals as submitted to the Company were the same as were printed in the last issue of THE UTILITY REPORTER, plus a number of proposals on certain inequities which were developed after the Conference in accordance with the criteria adopted by the Conference. Further details on the inequity proposals are available at Unit Meetings.

The May 4 and 5 meetings of the Committees were for the purpose of discussing the Union proposals to amend the Agreements covering physical and clerical employees. The Union completed its explanation in the two-day session and answered questions from the Company.

The Company submitted no proposals for amending the Agreement this year but reserved the right to present their position in their counter-proposals.

At the present time the Company is preparing counter-proposals which will be submitted to the Union and taken up at the next meetings which are scheduled for May 24 and 25.

Representing the Union at the meetings were Ronald T. Weak-

ley, L. L. Mitchell, Norman E. Amundson, A. J. Boker, Harry F. Dederman, William M. Fleming, James H. Fountain, Richard D. Kern, Joseph S. Kreins, Mel J. Robins, Wayne Weaver, and Jerry G. Wells.

Representing the Company were R. J. Tilson, L. H. Anderson, V. J. Thompson, A. J. Swank, E. H. Fisher, H. W. Haberkorn, L. W. Coughlan, C. L. Yager, E. F. Sibley, R. B. Thompson, and I. W. Bonbright.



The two topics of discussion in Unit Meetings during May were Negotiations and the Organizing Drive. In the top picture members of the San Francisco Gas Unit are shown listening to a report on Negotiations. In the lower picture members of the San Francisco Clerical Unit are planning their organizing efforts while Louise Jennings and Kathleen O'Rourke are busily engaged in preparing some organizing material for distribution.

## 224 New Members Signed As Contest Gets Up Steam

Ten members of Local 1245 have now qualified for prizes by signing up at least five new members each in the current Organizing Contest. In addition, three of these people have won more than one five-member prize by continuing their efforts to organize.

As the UTILITY REPORTER went to press, 224 new members had been signed up in the Organizing Drive with more applications coming in every day.

Leading the contest for the color television set and the other major prizes are John Zapian, San Francisco Gas Department with 22; "Nick" Garcia, Oakland Electric Department, with 11; and Robert Zavala, S. M.U.D., with 10.

Other members who have qualified for five-member prizes are: Enda Bartley, San Francisco; James H. Fountain, North Bay; Ralph H. Lancaster, San Jose; Ralph Rodriguez, East Bay; Floyd Stowe, San Jose; Richard Belato, S.M.U.D.; and Jesse Urrea, San Jose.

As a result of the efforts of

"Nick" Garcia, the Oakland Overhead Department is now 100% organized. "Nick" intends to stay in the running for the color television set, however. He is teaming up with Joan Bynum, Hayward office, to make home calls on clerical employees in the East Bay and sign them up in the union.

Organizing Committees have been formed in many locations now and special meetings are being arranged by several of the representatives to augment the drive.

### LOCAL 77 WINS RAISE AT SEATTLE

A contract effective April 1 between Puget Sound Power and Light Company and IBEW Local 77, Seattle, Washington, will result in wage increases of more than 4%. The new hourly scale for linemen is \$3.37 per hour, a 14 cent increase. Further details are not available at this time.

## 1245 HIRES RADIATION CONSULTANT

The Executive Board of Local 1245 has authorized the retention of Mr. Sam L. Casalina, Radiation Safety Consultant, effective May 2, 1960. Mr. Casalina's services will be utilized in the Local Union's program in the field of nuclear power and radiation safety. The program is in the initial stages of development.

The first phase of the education program was the briefing of the Officers on the subject matter and future possibilities. Educational meetings of key Local Union personnel will follow. Mr. Casalina will also assist in the development of our research library and active files in this important undertaking.

We consider it fortunate that we are gaining the professional services of Mr. Casalina whose educational background includes graduation from the University of California, the Institute of Nuclear Studies, Oak Ridge, Tennessee, attendance at Glendale City College, and the Army Aircraft and Engine School.

Mr. Casalina worked his way  
(Continued on Page 7)

Complete Listing of Candidates Appears in Special  
Union Election Supplement, Pages Four Through Six



# The UTILITY REPORTER



**RONALD T. WEAKLEY** . . . . . Executive Editor  
**NORMAN AMUNDSON** . . . . . Editor  
**L. L. MITCHELL** . . . . . Assistant Editor  
**M. A. WALTERS** . . . . . Assistant Editor

**Executive Board:** Charles T. Massie, President; Marvin C. Brooks, Milton Shaw, Thomas F. Kerin, Walter R. Glasgow, Robert E. Staab, Everett T. Basinger, Richard N. Sands.

Published monthly at 1918 Grove Street, Oakland 12, Calif., by Local Union 1245 of the International Brotherhood of Electrical Workers, AFL-CIO.  
 Second Class postage paid at Oakland, California

POSTMASTER: Please send Form 3579, Change of Address, to 1918 Grove St., Oakland 12, California.

Subscription price . . . . \$1.20 per year. Single copies, 10 cents

## 2 Big June Opportunities

During the month of June, the members of this Union will have two chances to demonstrate that they are responsible citizens in a democratic nation.

By May 31st the Local Union Election Committee will have mailed a ballot to every member of this Union qualified to vote in accordance with Article III, Section 14 of the By-Laws. These ballots must be marked and mailed back to the Election Committee. Only ballots in the Post Office Box by 10:00 a.m., June 15, will be counted.

On June 7th, the State of California will hold its Primary Election.

There is no compulsion in either of these elections. Some Unions and some Countries (Mexico, New Zealand, Belgium, Argentina, among others) provide fines and other penalties for not voting.

Our Union and our Nation believe that people will recognize their responsibility and vote without being forced to by penalties.

We sincerely hope our members will not disappoint us by failing to exercise their precious franchise.

## Recreation, Today's Drive

One of the phenomenal developments in America in the last few years is the gigantic new sports and recreation industry. This multi-billion dollar industry is the result of our changing economy, our rising population, and of the pursuit of more and more escape from the daily task of making a living.

As our economy expands, more money is available for relaxation. Organized Labor, through collective bargaining with progressive employers, has built the principle of longer vacations with more money to spend on vacations. As a result, everyone benefits.

Our rising population makes for more people seeking competition for the vacation dollar. Basic industries engaged in metals, autos, boats, trailers, motors, and all of the countless allied suppliers of the means of travel and relaxation, benefit from the increased desire to find relaxation and the ability to pay for it.

Most people can throw away their troubles and take a planned or unplanned vacation these days. Almost all desire to do so. One of the nicest things about all of this is that more people can broaden their outlook as they get out of their immediate atmosphere and meet more people who are just people, and not direct contestants in the economic jungle of everyday life.

While all of this creates business and helps meet a rising tax load in California and Nevada, it creates more and more need for roads, power, communication facilities, hospitals, police and fire protection, and everything which goes to provide facilities for temporary concentrations of many people. No matter where you go, you will pay taxes to go.

The State, County and Local Governments must meet the need as it grows. Utilities must expand to areas where the need arises. Thus, more tax funds and investment capital must be provided for this great new industry. All of this requires planning and progressive thinking by those who can see ahead and act in the affected areas.

Our members who number in the thousands in such areas have seen their quiet rural, mountain, and desert areas transformed into veritable beehives of activity in the summertime. Now it is also the same in the wintertime and soon will be a year-around situation.

We are proud to be associated with the development of our wonderlands in California and Nevada where the public services provided by our utility employers are made real by the working men and women of our Union.

We hope that our interest in safe traffic practices, safe swimming and boating practices, safe fire practices, and a safe return to homes without our lands and highways being littered with trash, will be accomplished by all tourists and vacationers in the 1960 banner recreation year.



# Stewards' Newsletter Reports Signing of Hospital Plan Pact

—From the Steward's Newsletter of Local 1245, IBEW Agreement between Local 1245 and P.G.&E. has been reached and a memo signed to establish a choice of hospital plans for employees of P.G.&E.

Discussions between your Benefit Committee and P.G.&E. disclosed that the P.S.E. Plan is to be revised and specifications on the revised plan will be put out to bid.

## Honor Ed Martin On Retirement At Bakersfield

At the conclusion of the Bakersfield Unit Meeting of April 7, 1960, a special order of business was called to honor a retiring member, Ed Martin.

Ed, a long time employee in the Bakersfield garage and also a faithful member of Local 1245 for many years, was presented with a Union Scroll and Pin. The honor of making this presentation went to Business Representative Jack Wilson, who thanked Ed in behalf of Business Manager Ronald T. Weakley and the Officers of Local 1245 for his support and wished him a happy and well earned retirement. At this point, Unit Chairman and Advisory Council member Bobby Robinson presented Ed with a beautifully wrapped gift. This was made possible by the generous contributions of Ed's many friends left behind in the P.G.&E. work force in Bakersfield. Ed was presented with a gift certificate and a request that the slacks and sport coat suggested by Mrs. Martin be worn by Ed at any future Unit meeting.

The meeting was then recessed to the refreshment bar and all enjoyed coffee, ice cream, and a beautiful selection of cakes presented by Janet Robinson, Frances Burr, and Helen Wilson. Keeping order in the kitchen and serving seconds were Commodore Burr and Kenny Araujo. This vital operation was supervised by Helen Wilson and Frances Burr, who served. Meeting adjourned at 10:30 p.m.

### He'll Fire Them

Non-union Employee (to hard-boiled boss)—"I've been around here for 20 years, doing three men's work for one man's pay, and I want a raise."

Boss—"Well, I can't give it to you. But if you tell me the names of the other two men, I'll fire them."

The trouble with most folks is not so much their ignorance, but their knowing so many things which ain't so.—Josh Billings.

**NEW CITIZEN**—Ana Marcus Keyponcher in the Domestic and Commercial Accounts Bureau of the General Office, was awarded her Citizenship in San Francisco on May 10. Ana, who has worked for P.G. & E. for four years, came to this country from Guatemala. Her fellow Union members at General Office offered congratulations and best wishes.

## GEN. CONSTR. STEWARDS IN FOURTH MEET

The General Construction Shop Stewards' meeting held in Oakland on Saturday, April 23, was the fourth in the past year and, according to those in attendance, the best. Most of the meetings have been called for specific purposes such as negotiating recommendations, the expense issue, etc., whereas this meeting was general in purpose and very informative in nature. The Shop Stewards had their questions answered and the administration received a resume of attitudes in the field.

Al Hansen, Assistant Business Manager, explained the organizing program and distributed kits to those present. Mr. Hansen quoted figures indicating that the potential of new members was greater in the General Construction Department than in any other division. Since this meeting, the number of new member applications coming in from General Construction has increased.

Some of our more active Shop Stewards brought active members to the meeting with the result that three new stewards were appointed. These three were members who showed the enthusiasm and interest necessary for a Shop Steward to do his job well.

Joe Mayes, Shop Steward and Chairman of the General Construction Unit at Davis, reported to the assembled Stewards on the Conference which was held at the Claremont Hotel, April 2-3, 1960. Mayes reported that the General Construction Department held their own caucus and had the opportunity to make any amendments they might have had. Mayes concluded by pointing out that the negotiating program was adopted unanimously.

### KINDNESS

I shall pass this way but once, any good thing therefore that I can do or any kindness that I can show to any human being, let me do it now. Let me not defer it or neglect it, for I shall not pass along this way again.

The agreement between Union and Company states in part: "At such time as the P. S. E. Hospital Plan is revised, it is understood that a Kaiser Foundation Health Plan will be made available to Company employees as an alternate plan in which they may elect to participate. The revised plan and the Kaiser Plan will become effective on the same date, at which time company offers to contribute \$3.50 per month per employee member toward the cost of the premiums of the plan in which the employee participates."

This memo was signed April 25th, 1960, and in no way affects the proposals made by our Negotiating Committee for changes in hospital benefits as proposed by the recent conference. The agreement for a choice of plans for employees should prove to be of great benefit to many employees.

## Automation Throws 20,000 on Relief

**SPRINGFIELD, Ill.**—Some 20,000 workers in the Chicago area alone have been put on relief in the last few months by automation, the Illinois House was told as it began consideration of a \$35 million deficiency appropriation for public assistance.

Peter W. Cahill, executive secretary of the Illinois Public Aid Commission, said automation has been a "key factor" in the rising cost of relief. He issued his warning as the legislature met in special session.

### BRAIN HAS HEART

**IN MIAMI, Fla.**, union white collar workers worried about automation and electronic brains can take heart; the thinking machines can goof up pretty terribly. The Miami Budget Director's office proved that fact once again recently—turning out 80,000 impeccably printed personal property tax bills. It would have taken a dozen or more employees to do the work done by the electronic brain—but the employees wouldn't have reduced everybody's taxes by 90 per cent as the electronic brain did!

### Every Member An Organizer!



Unit Chairman Bobby Robinson is shown chatting with Ed Martin while Carl Clontz prepares a piece of Ed's retirement cake for Ed's enjoyment. The occasion was the retirement party for Ed Martin held in Bakersfield, April 7, 1960.

# Local 1245 Election Supplement

## For the Office of President

### James E. Gibbs Jr.

Was initiated by Local Union 1324 on November 1, 1948 and is employed by Pacific Gas & Electric Company as a Light Crew Foreman at Orland. Is currently the Advisory Council Member from DeSabra Division and a Shop Steward. Has served as Chairman and Executive Committee Member of Unit 3414 and as a member of the System Review Committee. Was a Business Representative on the staff of Local Union 1245 for three years.



### Joseph S. Kreins

Was initiated by Local Union 1245 on April 3, 1952 and is employed by Pacific Gas and Electric Company as a Service Operator, Sr. in Oakland. Is currently serving on the System Negotiating Committee and as a Shop Steward. Has served as Chairman and Executive Committee Member of Unit 2314 and on the East Bay Division Joint Grievance Committee. Has previously been the Local Union President and Executive Board Member from the Central Area. Has represented Local Union 1245 as a delegate to California State Federation of Labor Convention — 1957, 9th District I.B.E.W. Progress Meeting-1957, I.B.E.W. International Convention — 1958, Clerical Workers "White Collar Workshop" — 1958, and on the East Bay United Crusade as Labor member in 1959. Has attended the University of Illinois summer class on "Industrial Labor Relations — 1957," and annual Local Union conferences in 1957, 1958 and 1959.



### William J. Reno

Was initiated by Local Union 1245 on December 1, 1955 and is employed by Pacific Gas and Electric Company as a Clerk "B" in San Francisco. Is currently serving as Chairman of Unit 2401, as a member of the San Francisco Division Joint Grievance Committee, on the Benefit Advisory Committee and as a Shop Steward. Has been Vice Chairman of his Unit and has served on the Departmental Committee on Clerical lines of progression and in an advisory capacity to the P.G.&E. System Negotiating Committee. Has at-

tended the annual Local Union conferences in 1955, 1957, 1958 and 1959.



### John Zapian

Was initiated by Local Union 1245 on June 1, 1956 and is employed by Pacific Gas and Electric Company as a Field Clerk in San Francisco. Is currently serving as Chairman of Unit 2413 and as a Shop Steward. Has attended the Labor-Management School at the University of San Francisco and the annual Local Union conferences in 1959 and 1960.

## Business Manager Financial Secretary

### Felix Bachmeier

Was initiated by Local Union 1245 on November 1, 1954 and is employed by Pacific Gas and Electric Company as 1st Operator at Stanislaus Powerhouse.



### Ronald T. Weakley

Was initiated by Local Union 1324 on November 1, 1948 and is the present Business Manager-Financial Secretary. Prior to becoming Business Manager-Financial Secretary, was a Business Representative. Was employed by Pacific Gas & Electric Company as a Watch Engineer at Avon Steam Plant and was a Shop Steward. Has represented Local Union 1245 as a delegate to the I.B.E.W. International Conventions in 1950, 1954 and 1958, International Labor Press Association of the AFL-CIO Conventions 1954 through 1959, California Labor Federation Conventions 1952 through 1959, California State Association of Electrical Workers, I. B. E. W., 1952 through 1959, (served on Executive Board and as Chairman of State Education Committee), Southern California Joint Executive Conference, I. B. E. W., Central Valley Joint Executive Conference, I. B. E. W., Northern California Joint Executive Conference, I. B. E. W., (served as President and Vice President), Nevada State Federation of Labor, Nevada State Association of Electrical Workers, Governor's Industrial Safety Conference, (member Transportation, Communications and Utilities Section), President's Traffic Safety Conference, West-

## CANDIDATES' BACKGROUND

By action of the Local Union Executive Board, the Election Committee has instructed to utilize the following provisions of the International Constitution.

Article XXVII, Section 2 (16) (A)

"Notwithstanding the above, and in addition to the sample ballot, a L. U. may distribute an official publication which shall list all candidates for L. U. office, together with a factual record of activities within the L. U., committee assignments performed, offices held and experience gained for and in behalf of the L. U. This publication shall be prepared under the supervision of the duly designated L. U. Election Committee."

In accordance with the foregoing, each candidate was notified to complete a questionnaire and return it, together with a photograph, suitable for publication, to the Election Committee. They were further notified that this completed questionnaire and/or photograph had to be in the Post Office Box by 10:00 a.m. on May 9, 1960, or the Election Committee would be unable to include the information requested in the May issue of the "Utility Reporter."

Candidates that did not return this questionnaire are also listed, and the Committee has supplied their date of initiation into the Local, their job classification and work headquarters.

ern Regional C. O. P. E. Conference, 1958, 1959, 1960, California Labor League for Political Education, and as a member of the California Committee for Fair Employment Practices. Has been a member of the P.G.&E. System Negotiating Committee 1951 through 1960, Sierra Pacific Power Company Negotiating Committee, 1952 through 1960, Citizens Utilities Company of California Negotiating Committee 1955, and Local Union Benefit Committee—P.G.&E.



### Clyde Weddle

Was initiated by Local Union 1245 on July 1, 1952 and is employed by the Pacific Gas and Electric Company as a Senior Warehouseman in San Francisco. Is currently a Shop Steward. Has served as Chairman of the Local Union Election Committee, as a member of the Advisory Council and on the System Safety Committee. Has attended the Governor's Industrial Safety Conference and classes on Industrial Relations at the University of San Francisco.

## Vice President



### Marvin C. Brooks

Was initiated by Local Union 1245 on June 1, 1942 and is employed by Pacific Gas and Electric Company as a Light Crew Foreman in Modesto. Is the present Local Union Vice President and has served as Executive Board Member from the Central

Area. Has served as a member of the Executive Committee, Unit 2515 and as a Shop Steward. Has been a member of the Sockton Division Joint Grievance Committee, Chairman of the System Safety Committee and was a Business Representative on the staff of the Local Union 1245 for approximately 1½ years. Has represented Local Union 1245 as a delegate to the Governor's Industrial Safety Conference, (member of the Transportation, Communications and Utilities Northern Section), the I.B.E.W. International Convention in 1954 and 1958, the California State Federation of Labor Conventions, 1954, 1957, 1958. Also has represented Local Union 1245 as a delegate to various Labor Councils and I.B.E.W. conferences and conventions.

### Thomas Lewis

Was initiated by Local Union 1245 on March 1, 1950 and is employed by the Sierra Pacific Power Company as a Gas Serviceman in Reno.



### Patrick F. McEvoy

Was initiated by Local Union 1245 on December 1, 1951 and is employed by the Pacific Gas and Electric Company as an Electrician in Richmond. Is currently a member of the Trustee Committee and a Shop Steward. Has served as Local Union Executive Board Member—Central Area, as a member of the Advisory Council representing East Bay and Stores Divisions and as a Recorder and Executive Committee Member for Unit 2311. Has been a member of the Stores Division Joint Grievance Committee and the Departmental Negotiating Committee on job definitions and lines of progression, Stores Division, and as Chairman of his Unit's Education Committee. Has represented Local Union 1245 as a delegate to the IBEW International Convention in 1958 and to the California State Federation of La-

bor Convention in 1956. Has attended various conferences and seminars sponsored by Local Union 1245.



### Ralph D. Miner

Was initiated by Local Union 1245 on July 1, 1942 and is employed by Pacific Gas and Electric Company as a Storekeeper at Sonora. Is currently the Advisory Council Member from Stockton Division and Chairman of Unit 2517's Safety Committee. Has served as Chairman Recorder and Executive Committee Member for Unit 2517.



### Peter E. Pelucca

Was initiated by Local Union 1245 on April 1, 1953 and is employed by the Sacramento Municipal Utility District as a Lineman. Is currently a delegate to the Sacramento-Yolo Central Labor Council. Has served on the P.G.&E. System Negotiating Committee and the General Construction Department Negotiating Committee and as a Shop Steward.

### Charles D. Warwick

Was initiated by Local Union 1245 on June 1, 1952 and is employed by Pacific Gas and Electric Company as a Line Sub Forman in Alta.

## WATCH FOR YOUR BALLOTS

On May 31, 1960, the Local Union Election Committee will mail the ballots for this year's Local Union Election to all members eligible to vote in accordance with Article III, Section 14 of the Local Union Bylaws. These ballots will be mailed to each member to his address of record at the Local Union office. In the event a member does not receive his ballots within a reasonable time from May 31st, he may obtain same by writing to the Judge of the Election at the Local Union office at 1918 Grove Street, Oakland 12, California, or by appearing in the Local Union office.

The Election Committee would like to urge that each member participate in this most important function of membership in the Local Union and promptly return his ballots in the manner prescribed by the instructions which will be included with the ballots. The Committee further suggests that each member maintain this copy of the Local Union Election Supplement until he receives his ballots.

**Recording Secy.**



**Loretta Olive Arneson**

Was initiated by Local Union 1245 on April 1, 1956 and is employed by the Sierra Pacific Power Company as a Unit Bookkeeper. Is currently the Recorder for Unit 3311, a member of the Sierra Pacific Power Company Negotiating Committee and a Shop Steward. Attended the Nevada State AFL-CIO Labor Institute in 1959 and the Local Union Conference in 1960.



**James R. Martin**

Was initiated by Local Union 1245 on June 1, 1954. Is employed by Pacific Gas and Electric Company as an Operator at Marysville Substation. Is currently a member of Unit 3611 and has served as Vice-Chairman of Unit 2316 and Chairman of Unit 3813 and as a Shop Steward. Has attended annual Local Union conferences in 1955, 1957 and 1958 and Shop Steward's seminar in 1955. While serving as a member of the Unit's Education Committee was a registrar of voters.



**Ermanno H. Paganini**

Was initiated by Local Union 1245 on October 1, 1955 and is employed by Pacific Gas and Electric Company as a Warehouseman in Oakland. Is currently the Vice-Chairman of Unit 2311 and a Shop Steward. Has served as Recording Secretary of Unit 2311 and as a member of the Departmental Negotiating Committee on job definitions and lines of progression, Warehouse Department. Attended the annual Local Union conferences in 1958 and 1959.

**M. Scott Shaw**

Was initiated by Local Union 1245 on June 1, 1943 and is employed by the Pacific Gas and Electric Company as an Adjuster in Monterey.

**Treasurer**

**Robert O. Jensen**

Was initiated by Local Union 1245 on February 1, 1956 and is employed by Pacific Gas and Electric Company as a Clerk Driver, Light, in Oakland.

**Allan C. Terk**

Was initiated by Local Union 1324 on June 5, 1950 and is employed by Pacific Gas and Electric Company as a Labor Foreman at Caribou.

**For Local Union Executive Board (Southern Area)**



**Walter A. Kaufmann**

Was initiated by Local Union 1245 on August 1, 1952. Is employed by Pacific Gas and Electric Company as a Collector in Fresno. Is currently a member of the San Joaquin Joint Grievance Committee and has served as Chairman of Units 1101 and 1111. Was a member of the P.G.&E. System Negotiating Committee and attended the annual Local Union conference in 1959.



**Gerald F. Slaughter**

Was initiated by Local Union 1245 on October 1, 1954 is employed by Pacific Gas and Electric Company as a Lineman in Santa Cruz. Has served as Chairman and Vice-Chairman and Executive Committee member for Unit 1513.



**Robert E. Staab**

Was initiated by Local Union 1245 on November 1, 1947 and is employed by Pacific Gas and Electric Company as a Troublemaker in Santa Maria. Is the present Executive Board Member-Southern Area and a Shop Steward. Has served on the Ex-

ecutive Committee of Units 1216 and 1211, as a member of the Advisory Council-Coast Valleys Division, Coast Valleys and San Joaquin Divisions Joint Grievance Committees and as a member of Unit 1216's Safety Committee. Has represented Local Union 1245 as a delegate to the Pacific Coast Education Conference sponsored by the AFL-CIO in 1958, California Labor Federation Convention—1959 to the California Labor Federation Labor - Management Reporting and Disclosure Act Conference in 1959, and to various 9th District I.B.E.W. Progress Meetings and the California State Association of Electrical Workers Conferences. Also represented Local Union 1245 in the Tri-County committee on the employee-employer relations initiative.

**(Central Area)**

**Albert M. Bolter**

Was initiated by Local Union 1245 on January 1, 1946 and is employed by the Pacific Gas and Electric Company as a Clerk Driver, Light, at Sonora.



**Harold E. Buss**

Was initiated by Local Union 1245 on March 1, 1952 and is employed by Pacific Gas and Electric Company as a Lineman in Oakdale. Is currently a member of the Executive Committee of Unit 2515 and has served as Chairman of Unit 2515. Attended annual Local Union conferences in 1955, 1957 and 1959.



**Sylvester S. Cruz, Sr.**

Was initiated by Local Union 1324 on July 25, 1950 and is employed by Pacific Gas and Electric Company as a Machinist at Hunter's Point Power Plant. Is currently the Chairman of Unit 2414. Has served as Chairman of Unit 2411 and as a Shop Steward. Attended the Labor-Management School at the University of San Francisco and the annual Local Union conferences in 1958, 1959 and 1960.

**Rocco W. Fera**

Was initiated by Local Union 1245 on August 1, 1952 and is employed by Pacific Gas and Electric Company as an Auxiliary Operator at the Hunters Point Power Plant.

**John F. Morgan**

Was initiated by Local Union 1245 on July 1, 1952 and is employed by Pacific Gas and Elec-

tric Company as a Clerk "A" in the General Office in San Francisco. Is currently a Shop Steward and a member of the General Office Department Joint Grievance Committee. Previously served as a member of the East Bay Division Joint Grievance Committee and as a Shop Steward in East Bay Division.



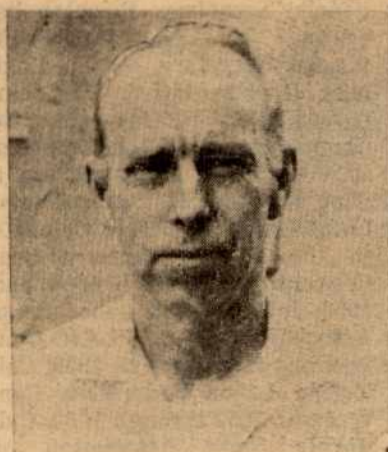
**Richard N. Sands**

Was initiated by Local Union 1245 on November 1, 1954 and is employed by Pacific Gas and Electric Company as a Cablesplicer in Oakland. Is currently the Executive Board Member-Central Area and a Shop Steward. Has served as a member of the Advisory Council, East Bay Division and the Departmental Negotiating Committee for job definitions and lines of progression, Underground Department. Represented Local Union 1245 as a delegate to the California Labor Federation Convention in 1958 and the Northern California Joint Executive Board Conference, I.B.E.W.—1959. Attended the annual Local Union conferences in 1957, 1958, 1959 and 1960.

**George J. Wagemann**

Was initiated by Local Union 1245 on January 1, 1945 and is employed by the Pacific Gas and Electric Company as a Lineman in Lodi. Is currently the Chairman of Unit 2516 and a Shop Steward. Has served as Recorder of Unit 2516 and attended the annual Local Union conference in 1959.

**(Northern Area)**



**Laurence E. Barbour**

Was initiated by Local Union 1245 on August 1, 1946 and is employed by Pacific Gas and Electric Company as a Pressure Operator in Marysville. Is currently a Shop Steward and a delegate to the Marysville Central Labor Council. Has served as Chairman, Vice-Chairman and as a member of the Executive Committee of Unit 3611 and on the Advisory Council—Colgate Division and as a member of the Colgate Division Joint Grievance Committee. Attended the annual Local Union conference in 1959.



**George W. Lamka**

Was initiated by Local Union 1245 on August 1, 1946 and is employed by Pacific Gas and Electric Company as a Lineman in Oroville. Is currently a member of the Executive Committee of Unit 3613 and has served as Recorder of Unit 3613 and as a Shop Steward. Attended the annual Local Union conference in 1960.



**Kenneth Waters**

Was initiated by Local Union 1324 on July 6, 1950 and is employed by Pacific Gas and Electric Company as a Voltage Tester in Santa Rosa. Attended the annual Local Union conference in 1960.

**Gerald F. Watson**

Was initiated by Local Union 1245 on March 1, 1952 and is employed by Pacific Gas and Electric Company as a Lineman in Corning. Is currently the Advisory Council Member—Shasta Division. Has served as Chairman of Unit 3211 and is a member of the Shasta Division Joint Grievance Committee. Has served as a member of the Local Union By-laws Committee.

**(General Construction Department)**



**John W. Michael**

Was initiated by Local Union 1245 on February 1, 1950 and is employed in the General Construction Department of Pacific Gas and Electric Company as a Mechanic in Station Division. Is currently the Advisory Council Member General Construction Department, a member of the General Construction Department Joint Grievance Committee and a Shop Steward. Has served on the General Construction Department Negotiating Committee and as a member of the P. G.&E. System Negotiating Committee. Has attended the annual Local Union conferences in 1955, 1957, 1958, 1959 and 1960.



**John Scheeringa**  
 Was initiated by Local Union 45 on April 1, 1949 and is employed in the General Construction Department of Pacific Gas and Electric Company as a Tractor Operator "B" in Gas Division. Is currently a member of the General Construction Department Joint Grievance Committee and a Shop Steward. Attended the annual Local Union conference in 1959.

**For Local Union Advisory Council San Joaquin**



**Kenneth Brown**  
 Was initiated by Local Union 45 on May 1, 1947 and is employed by Pacific Gas and Electric Company as a Lineman in Fresno. Has served as Recorder of Unit 1111 and as a Shop Steward.



**Albert G. Gallahan**  
 Was initiated by Local Union 45 on December 1, 1946 and employed by Pacific Gas and Electric Company as a Storekeeper in Wasco. Is currently Shop Steward. Attended the annual Local Union conference in 1960.



**Bobby G. Robinson**  
 Was initiated by Local Union

1245 on November 28, 1949 and is employed by Pacific Gas and Electric Company as an Electrician in Bakersfield. Is currently the Chairman of Unit 1112, a Shop Steward, and a member of the Benefit Advisory Committee. Has served on the System Negotiating Committee and the Departmental Negotiating Committee, for job definitions and lines of progression, Electric Department Maintenance.

**Coast Valleys**

**Donald E. Bennett**  
 Was initiated by Local Union 1245 on September 1, 1954 and is employed by Pacific Gas and Electric Company as a Communications Technician in San Luis Obispo. Is currently the Advisory Council Member—Coast Valleys Division. Has served as Vice Chairman of Unit 1211 and as a Shop Steward.



**Merle H. Branson**  
 Was initiated by Local Union 1245 on March 1, 1946 and is employed by Pacific Gas and Electric Company as a Troublemaker in Santa Maria. Has served as a member of the San Joaquin Division Joint Grievance Committee and as Recorder of Unit 1216.



**Austin I. Harvie**  
 Was initiated by Local Union 1245 on May 1, 1951 and is employed by Pacific Gas and Electric Company as a Gas Serviceman at Soledad. Is currently a Shop Steward. Has served as Chairman, Recorder and Executive Committee Member for Unit 1213. Attended the annual Local Union conferences in 1959 and 1960.



**Harry E. Koue**  
 Was initiated by Local Union 1245 on July 1, 1954 and is employed as an Instrument Repairman at Moss Landing Power Plant by the Pacific Gas and Electric Company. Is currently

a Shop Steward. Attended the annual Local Union conference in 1960.

**Department of Pipeline Operations**



**Walter G. Kreuzsch**  
 Was initiated by Local Union 1245 on October 1, 1951 and is employed by Pacific Gas and Electric Company as an Electrician at Hinkley Compressor Station. Is currently a member of the Executive Committee of Unit 1311, a member of the Department of Pipe Line Operations Joint Grievance Committee, and a Shop Steward. Has served as Chairman, Vice Chairman and Recorder of Unit 1311 and on the Departmental Negotiations Committee, job definitions and lines of progression, Department of Pipe Line Operations. Attended the annual Local Union conferences in 1955, 1957, 1958, 1959 and 1960.

**San Jose and Santa Clara M.U.D.**

**E. F. Chittenden**

Was initiated by Local Union 1324 on November 1, 1948 and is employed by Pacific Gas and Electric Company as a Troublemaker in Redwood City. Has served as Recorder of Unit 1512 and represented Local Union 1324 at the I. B. E. W. International Convention in 1950.



**Leland Thomas, Jr.**  
 Was initiated by Local Union 1324 on May 25, 1950 and is employed by Pacific Gas and Electric Company as a Lineman in San Jose. Is currently the Advisory Council Member from San Jose Division and a Shop Steward. Has served as Chairman of Unit 1511 and as a member of the San Jose Division Joint Grievance Committee.

**Transit Authority of City of Sacramento**

**Robert W. Calzascia**  
 Was initiated by Local Union 1245 on April 1, 1950 and is employed by the Transit Authority of the City of Sacramento as a First Class Mechanic.

**Standard Pacific Gas Lines, Inc.**

**Albert Bulthuis**

Was initiated by Local Union 1245 on December 1, 1957 and is employed by Standard Pacific Gas Line, Inc. as a Line Mechanic in Concord.



**Andrew A. Clayton**  
 Was initiated by Local Union 1245 on January 1, 1958 and is employed by Standard Pacific Gas Line Inc. as a Line Mechanic at Concord. Is currently Advisory Council Member for Standard Pacific Gas Line, Inc., Chairman of Unit 2011, member of the Standard Pacific Gas Line, Inc. Joint Grievance Committee, on the Standard Pacific Gas Line, Inc. Negotiating Committee, and a member of the Benefit Advisory Committee.

**East Bay and Stores**

**Juventino G. Garcia**

Was initiated by Local 1245 on December 1, 1953 and is employed by Pacific Gas and Electric Company as a Lineman in Oakland. Is currently the Advisory Council Member—East Bay and Stores Divisions, Chairman of Unit 2314, and a Shop Steward. Attended the annual Local Union conferences in 1959 and 1960.

**San Francisco Division and General Office**

**William M. Kennedy**

Was initiated by Local Union 1324 on December 1, 1948 and is employed by Pacific Gas and Electric Company as a Clerk "B" in San Francisco.



**John William Pickens**  
 Was initiated by Local Union 1245 on April 1, 1947 and is employed by Pacific Gas and Electric Company as a Lineman-Troublemaker in San Francisco. Is currently the Advisory Council member, San Francisco Division and General Office, and a Shop Steward. Has served as Chairman, Vice Chairman and Executive Committee member of Unit 2411. Attended the annual Local Union conferences in 1955, 1957, 1959 and 1960.

**Drum**

**Stanley P. Justis**

Was initiated by Local Union 1245 on December 1, 1951 and is employed by Pacific Gas and Electric Company as an Apprentice Lineman in Auburn. Is currently the Advisory Council Member—Drum Division, and a Shop Steward. Has served as Chairman and Recorder of Unit 3511.

**Stockton Division and City of Lodi**

**Ed Marliani**

Was initiated by Local Union 1245 on May 1, 1942 and is employed by Pacific Gas and Electric Company as a Water Treatment Plant Operator at Sonora.



**Harold W. Rubow**  
 Was initiated by Local Union 1245 on March 1, 1957 and is employed by Pacific Gas and Electric Company as a Truck Driver in Stockton. Is currently the Chairman of Unit 2511 and a Shop Steward. Attended the annual Local Union conference in 1960.



**Charles H. Scoggins**  
 Was initiated by Local Union 1245 on April 1, 1958 and is employed by Pacific Gas and Electric Company as a Groundman in Lodi. Is currently a member of the Executive Committee of Unit 2516. Attended the annual Local Union Conference in 1960.



**Robert I. Stringham**  
 Was initiated by Local Union 122 on August 22, 1939 and is employed by Pacific Gas and Electric Company as a Lineman in Newman. Is currently the Recorder of Unit 2515, a member of the Stockton Division Joint Grievance Committee, and a Shop Steward.

**Sacramento Municipal Utility District**

**Royall D. McBraunehue**

Was initiated by Local Union 1245 on April 1, 1956 and is employed by the Sacramento Municipal Utility District as a Lineman.

(Continued on Next Page)

## For Local Union Advisory Council

(Continued from preceding page)

### Key System and East Bay Municipalities



**William Yochem**

Was initiated by Local Union 50 on August 27, 1941 and is employed by the City of Oakland as a Lineman. Is currently a Shop Steward, delegate to the Alameda Central Labor Council, and a member of the Local Union Examining Board. Has served as Vice President of Local Union 50, Vice Chairman of Unit 2211, and on the Salary Negotiating Committee for the City of Oakland. Represented Local Union 1245 as a delegate to the I.B.E.W. International Convention in 1958.

### Humboldt



**Henry B. Lucas**

Was initiated by Local Union 1245 on October 1, 1952 and is employed by Pacific Gas and Electric Company as a Lineman in Eureka. Is currently the Advisory Council Member—Humboldt Division, and a Shop Steward. Has served as Chairman, Vice Chairman and Executive Committee member for Unit 3111, the Safety Committee of Unit 3111, the Humboldt Division Joint Grievance Committee and on the Local Union Election Committee. Represented Local Union 1245 at the I.B.E.W. International Convention in 1958.

### Shasta



**James M. Branstetter**

Was initiated by Local Union 1245 on March 6, 1945 and is employed by Pacific Gas and Electric Company as a Line Sub Foreman in Redding. Is currently a member of the Executive Committee of Unit 3212, a Shop

Steward, and a member of the Benefit Advisory Committee. Has served as Chairman of Unit 3212 and on the Local Union Election Committee. Attended the annual Local Union conferences in 1955, 1957, 1958, 1959 and 1960.

### Sierra Pacific Power Company



**Orville Owen**

Was initiated by Local Union 1245 on March 1, 1952 and is employed by Sierra Pacific Power Company as a Gas Serviceman at Reno. Currently is member of the Advisory Council—Sierra Pacific Power Company, Sierra Pacific Power Company Joint Grievance Committee, Sierra Pacific Power Company Negotiating Committee, and a Shop Steward. Represented Local Union 1245 as a delegate to the Nevada State Federation of Labor Convention—1959.

### De Sabla



**Charles E. Hasty**

Was initiated by Local Union 1245 on May 1, 1951 and is employed by Pacific Gas and Electric Company as an Emergency Relief First Operator at Storrer. Is currently the Recorder of Unit 3413, a member of the De Sabla Division Joint Grievance Committee, and a Shop Steward. Has served on the Departmental Negotiating Committee, job definitions and lines of progression, Electric Department Operations.

### Colgate



**Vernon L. Franklin**

Was initiated by Local Union 1245 on October 1, 1950 and is employed by the Pacific Gas and Electric Company as a Gas Serviceman at Oroville. Is currently Chairman of System Safety Committee and has served as Chairman, Vice Chairman and Recorder of Unit 3616. Has repre-

sented Local Union 1245 at the Governor's Industrial Safety Conferences in 1956 and 1959.



**Ronald James Livengood**

Was initiated by Local Union 1245 on November 1, 1951 and is employed by the Pacific Gas and Electric Company as an Apprentice Lineman in Marysville. Is currently the Recorder of Unit 3611. Attended the annual Local Union conference in 1959.

### North Bay



**Frank S. Anderson**

Was initiated by Local Union 1245 on September 1, 1952 and is employed by Pacific Gas and Electric Company as an Apprentice Lineman at Napa. Is currently Advisory Council Member—North Bay Division, a Shop Steward and Chairman of Unit 3716's Education Committee. Has served as Vice Chairman of Unit 3716 and as a member of the Benefit Advisory Committee, attended annual Local Union conferences in 1959 and 1960.

### Sacramento

#### Dwain Zahn

Was initiated by Local Union 1245 on June 1, 1951 and is employed by Pacific Gas and Electric Company as a Gas Serviceman in Sacramento.

### Citizens Utilities Co. of California



**Arthur L. Borden**

Was initiated by Local Union 1245 on January 1, 1957 and is employed by Citizens Utilities Company of California as Installer Repairman at Susanville. Currently is Advisory Council Member—Citizens Utilities Company of California, member of the Citizens Utilities Company of California Negotiating Committee, and a Shop Steward.

### General Construction Department



**Edward L. Orzalli**

Was initiated by Local Union 1245 on April 1, 1947 and is employed by the General Construction Department of Pacific Gas and Electric Company as a Clerk at Davis Warehouse. Is currently a Shop Steward.

### Jerry G. Wells

Was initiated by Local Union 1245 on July 1, 1954 and is employed by the General Construction Department of Pacific Gas and Electric Company as a Mechanic in Station Division. Is currently a member of the General Construction Department Joint Grievance Committee, a Shop Steward, and a member of the System Negotiating Committee. Attended annual Local Union conference in 1960.

### PG&E Clerical

#### Wesley R. Bennett

Was initiated by Local Union 1245 on July 1, 1957 and is employed by Pacific Gas and Electric Company as a Clerk "C" in Oakland.

### Stanley A. Butera

Was initiated by Local Union 1245 on July 1, 1951 and is employed by the Pacific Gas and Electric Company as a Clerk "C", General Office, San Francisco. Is currently the Recorder of Unit 2401 and a Shop Steward. Has served as Recorder of Unit 3811 and attended the annual Local Union conferences in 1957, 1958, 1959 and 1960.



**Joan Elizabeth Bynum**

Was initiated by Local Union 1245 on April 13, 1952 and is employed by Pacific Gas and Electric Company as PBX Operator "A" in Hayward. Is currently a member of the East Bay Division Joint Grievance Committee and a Shop Steward. Has served as Chairman and Recorder of Unit 2302.

### John Capriola

Was initiated by Local Union 1245 on July 1, 1952 and is employed by Pacific Gas and Electric Company as a Collector in Fresno.

### Damon Pembroke

Was initiated by Local Union 1245 on May 1, 1945 and is employed by the Pacific Gas and Electric Company as a Collector in Marysville. Is currently a

member of the Colgate Division Joint Grievance Committee and a delegate to the Marysville Central Labor Council. Has served as Chairman and Executive Committee member of Unit 3601. Attended the annual Local Union conferences in 1957, 1959 and 1960.

### Joseph F. Stansbury

Was initiated by Local Union 1245 on November 1, 1952 and is employed by Pacific Gas and Electric Company as a Collector in Fresno.

### Electronic Data Processing Center



**Richard D. Kern**

Was initiated by Local Union 1245 on February 1, 1959 and is employed by Pacific Gas and Electric Company as a Machine Operator X in the San Francisco General Office. Is currently the Advisory Council Member—San Francisco Electronic Data Processing Center of Pacific Gas and Electric Company, a Shop Steward and a member of the System Negotiating Committee. Represented Local Union 1245 as a delegate to the 9th Annual Systems and Procedures Conference.

## Gas Storage Field of PG&E Now in Service

Completion of a \$200,000 compressor installation has marked the beginning of the injection of natural gas produced from other areas into the Pleasant Creek Storage Field northwest of Winters. Pacific Gas and Electric Company announced recently.

The big engine, assembled on a rolling hilltop near the center of the 400-acre storage area, has a capacity of 240 horsepower. It can force gas into the partially depleted gas field through two well pipes each about one half mile deep. Gas will be withdrawn from the same wells as demands require.

A portion of the gas injected will remain as a permanent "cushion" to prevent the intrusion of water which would damage the minute cells in porous layers of the earth where the gas is naturally held. Pressures of up to 1,250 pounds per square inch will be maintained underground when the storage is at full capacity.

Working capacity of the field initially will be 1.2 billion cubic feet and ultimately will be 3.25 billion c.f. The gas will be used for "peaking" to meet extra demands on days when the PG&E system load is high, and will be withdrawn at rates of up to 80 million c.f. a day at ultimate development.

Pleasant Creek is the first storage field in the PG&E system. Another, at McDonald Island in the Delta area near Stockton, now is under development.

**SIGN UP THAT NON-MEMBER!**

## Kettleman Pipeliners Are Hit by Bad Luck

Kettleman Compressor Station is hoping that the dark cloud of bad breaks has drifted away. The background of this thinking dates from an early morning visit to the Plant by John Mansfield, Meter Inspector. The second unfortunate victim of this story is Jim Mays, Pipeline Helper in the Line Crew at Kettleman.

At about 7:45 a.m., while navigating the winding, narrow and treacherous road from Avenal to the Station, Brothers Mansfield and Mays hit head on. The pickups both were driving were totally destroyed and John Mansfield was put in the hospital with very serious and painful injuries to the ribs and hip. John will be in the hospital for at least six weeks and at home on the mend for a probable three to four months. Jim was in bad condition with cuts and loss of several teeth, but has been able to return to work. Both Jim and John were alone at time of the accident.

In the week following, Bob Maloney, Mechanic in the Line Crew, was another victim of misfortune when he broke his arm in a fall. At the rate accidents were happening to the Kettleman Crew, it appeared no one was safe, but the spell is apparently broken as no new casualties have been reported in the last couple of weeks. All Brothers and friends of these fellows wish them a speedy and complete recovery.

## YOUR Business Manager's COLUMN

(Continued from Page 1)

people, do not begin by discussing the things on which you differ. Begin by emphasizing—and keep on emphasizing if possible—that you are striving for the same end and your only difference is one of method and not of purpose. This can be practiced not only on the job, but with the people you meet at the bar as well—and is especially applicable to our constant jurisdictional disputes. Ideas may become controversial, but remember that the other fellow's ideas might be worth listening to, and after all everyone, in free America, is entitled to an opinion of his own.

Let us answer the following question honestly: How much time do I spend discussing and formulating opinions without giving consideration to having factual evidence? So many times the improper evaluation of a person causes a severance of lifelong friendships, as well as family disruptions. Would it not be better to "figuratively count to 10" before criticising others? The adoption of this philosophy may make a friend out of a purported enemy.

The preceding paragraphs may not have a tendency to change our ideas overnight in regard to human relations, but proper analysis of this article could bring about a more peaceful and contented way of life for each of us!

BLOOD DONATION CENTER



"DON'T MENTION THE WORD 'SCAB' AROUND HERE . . . IT MAKES THESE UNION MEN'S BLOOD BOIL!" by Sturgill.

## PG&E to Double Size of Morro Bay Power Plant

Pacific Gas and Electric Company plans to double the size of its Morro Bay Power Plant, in San Luis Obispo County, it was announced recently by PG&E President N. R. Sutherland. An application to the California Public Utilities Commission for a certificate to build the addition will be filed soon, he said.

The project will add 325,000 kilowatts of electric generating capacity to the plant, raising the total to 655,000 kw and making Morro Bay the second largest steam power station on the PG&E system, Mr. Sutherland said. Only Pittsburg Power Plant in Contra Costa County, largest in the west, will have more capacity.

Work on the Morro Bay project, which will cost more than \$40 million, is scheduled to begin about January 1, 1961, and be completed in the winter of 1962-1963, the PG&E president reported.

The building containing the new unit will be added to the south side of the existing plant, approximately doubling the size of the present structure. The exterior architecture of the new building will be in keeping with the aluminum panelling installed in 1955, Mr. Sutherland said.

The new unit will require construction of an additional sea water evaporator similar to those installed in the original plant in 1955. Of an improved design, it will have a capacity of 72,000 gallons per day, making the big generating unit's steam boilers self-sufficient for fresh water. As in the existing plant, no water from Morro Bay's domestic system will be used, Mr. Sutherland said.

Cooling water for the new generating system will be drawn from Morro Bay through an intake structure to be built on the south side of the one built in 1955. Cooling water will be returned to the ocean through a tunnel paralleling the one which serves the present plant's circulation system.

New switchyard facilities required to handle Morro Bay's added power capacity will be built on the east side of the new building. Power from the new unit will be carried across the Coast Range into the San Joaquin Valley over a 220,000-volt transmission circuit costing approximately \$2 million.

PG&E intends to fuel the new unit with fuel oil and natural gas, Mr. Sutherland said. The gas will be brought from the Kettleman Hills region through a 67-mile-long \$4 million pipeline that will be built for that purpose. The pipeline will have enough capacity to serve the entire plant with natural gas, but fuel oil also will be burned, he said.

The PG&E president estimated that 400 men would be at work on the Morro Bay Power Plant expansion at the peak of construction activity. PG&E will function as its own engineer-constructor on the project.

Every Member An Organizer!

# Best Over-65 Health Plan Solves But Few Problems

By SIDNEY MARGOLIUS

Readers are asking about the hospital and surgical insurance for people over 65 being offered through the mails by the American Association for Retired Persons.

To get this insurance you have to join the AARP for \$2. This entitles you to buy the insurance for \$6 a month. Whether you buy the insurance or not, your membership gets you the Association's magazine and the privilege of buying medicines through the Association at savings said to be 25 per cent. Anyone over 55 can join AARP. But you or your spouse have to be at least 65 to buy its insurance.

THE AARP performed a great public service at the Kefauver drug hearings. It demonstrated the damage done to older people by excessive charges of medicines.

But AARP's insurance, while among the best available except for Blue Cross in some areas, provides no real solution for the tough problem of medical insurance for retired workers. In fact, analysis of AARP's plan, others offered by commercial companies, and new Blue Cross "senior" plans, clearly shows there isn't going to be any adequate hospital and health insurance for seniors unless it's made part of the Social Security system as the Forand bill would provide.

The Forand bill is being determinedly supported in its new try for Congressional approval by labor unions, other community groups, health co-ops and many independent medical experts. It would provide hospital and surgical insurance for Social Security beneficiaries.

But the new plans being offered by AARP and other sources are so limited that they offer only slight protection.

The AARP plan actually is insured by Continental Casualty Company and is much the same as Continental's widely advertised "65-plus" hospital-surgical policy.

The AARP plan costs \$72 a year for each person compared to \$78 for Continental's "65-plus" policy. For this AARP pays up to 31 days of hospital bed and board at a rate of \$10 a day; 50 per cent of miscellaneous services required while in the hospital, like X-rays, lab tests, etc. up to \$125; surgical payments on the basis of a specified rate of payment, like \$100 for an appendectomy, but in no case more than \$200, and outpatient emergency hospital care up to a maximum of \$125 for any one accident.

The AARP costs a little less than Continental and also, any existing illnesses are covered immediately. Under Continental's own plan which itself is not as harsh as many other commercial insurance plans, you're not protected against existing illnesses until your policy has been in existence six months.

Both policies are non-cancellable individually. But the entire group can be cancelled.

AARP also provides an optional coverage for \$3 a month extra. This pays for 50 doctor calls a year, at the rate of \$3 at office or hospital, or \$4 at home, plus nursing-home payments of \$5 a day for 31 days and \$3.75 for the next 29 days of each confinement, plus additional hospital payments of \$7.50 a day for the next 29 days.

The Trouble with these privately-insured plans, as AFL-

CIO Social Security Director Nelson Cruikshank has pointed out in the case of Continental, is that the cost is too high for most retired people, and the benefits are too limited.

The payment of \$10 a day for hospital room and board is far from the actual cost these days in most cities. The rough average cost of semi-private hospital room and board in seventeen cities selected at random by this writer, is \$19.15 a day. Rates in these 17 cities are:

Atlanta	\$13.06
Jacksonville	13.96
Birmingham	14.25
New Orleans	14.28

Kansas City (Mo.)	15.29
Denver	15.66
Columbus (O.)	16.88
Baltimore	16.94
Indianapolis	18.11
Chicago	19.77
Washington, D.C.	19.80
Detroit	20.00
Boston	24.04
Cleveland	24.34
Los Angeles	25.40
New York	26.00
Oakland, Calif.	27.80

TO SUM UP: The AARP policy is one of the best of the generally unsatisfactory policies being offered people over 65. But it really doesn't solve the problem.

## NEW 2-PART GAS ENGINE IS CLOSE TO PRODUCTION

More facts have come out about the revolutionary gasoline engine with only two moving parts, reported in the Dec. 3, 1959, Tool Box.

Curtiss-Wright Corp. is building a 1,000-horsepower version of the new engine and this will be ready by summer, Roy T. Hurley, the company's chairman and president, recently told the metropolitan division of the Society of Automotive Engineers at a meeting in Washington, D.C.

Hurley also revealed: Development of a five-horsepower air-cooled version of the new engine is under way.

A test model, built last year, "has demonstrated a performance and reliability that justifies our proceeding with a program to obtain the potential of the engine. . . ." The test model is described as having a displacement of 60 cubic inches.

Pros and cons of the new rotary type engine are weighed by Reporter David Scott in the March issue of union-labeled Popular Science magazine. He writes:

Curtiss-Wright is building the engine under license from NSU Werke of Neckarsulm, Germany, maker of the Prinz automobile.

The new engine has a single spark plug and a rotor and runs on a mixture of gasoline and air supplied by a carburetor as the diagram shows. Pistons, connecting rods, camshafts, springs and valves of conventional gasoline engines are eliminated.

The triangular rotor performs three power sequences consisting of intake, compression, combustion and exhaust with each revolution it makes. A cam on the end of the power take-off shaft permits rotor tips to maintain constant contact with the combustion chamber.

The new engine could conceivably take over many jobs of existing piston engines if gas-tight sealing can be achieved

during combustion. The rotor with its three apices always touching the combustion chamber wall creates three moving cavities that constantly change size. The combustion spaces must be gas-tight against pressure averaging 121 pounds to the square inch. The rotor apices carry sealing lips that rub against the chamber. It is not entirely clear how the rotor is sealed along its sides.

A water jacket cools the combustion chamber. The rotor must be cooled by incoming fuel which enters from a vent away from the combustion space.

The new engine is economical, using any kind of gasoline no matter how raw. It has a compression ratio between 7.5 and 8 to one.

Felix Wankel, an expert on lubrication seals who worked for the German Aviation Research Institute during World War II, invented it. He sold it to NSU in 1956. Curtiss-Wright became interested in the new engine two years ago.

—From The Machinist, April 7, 1960.

## Hires Radiation Safety Consultant

(Continued from Page 1)

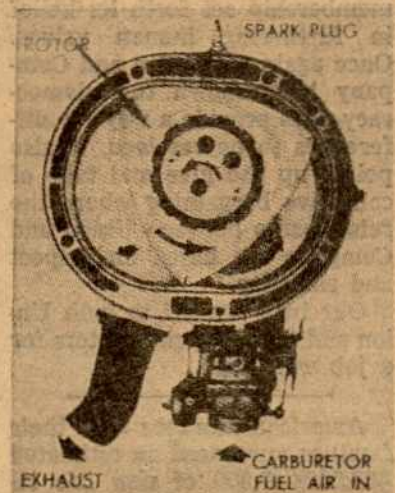
through the University as a production workers and held union membership in two unions while working in the aircraft industry. He worked as a Camp Counselor for boys, and as a management trainee for a business machine corporation prior to graduation from U. C.

His professional experience includes positions as Technical Coordinator for Radiation Safety, University of California Radiation Laboratory, Berkeley, and as Inspector (Nuclear Safety Engineer), United States Atomic Energy Commission.

Mr. Casalina's knowledge of the general nuclear field and particularly in health physics will aid your Local Union to discharge its responsibilities to the membership in keeping up with the peaceful use of the atom and the attendant progress in the radiation field.

Further details of the forthcoming activities of Local 1245 in this new field of service will be related at future meetings as the program develops. We shall work closely with our International Office which is active in developing a program on the International level.

When the boss says it will soon be time to retire, your social security office is the place to inquire.



Cross-section diagram shows working parts of new engine.

# NEW GAINS MADE, SIERRA PACIFIC'S PACT IS RATIFIED

Local 1245 Negotiating Committee for Sierra Pacific Power Company employees composed of employee members Loretta Arneson, Bob Newberry and Orville Owen, with Business Manager Ronald T. Weakley and Staff Members L. L. Mitchell and Roy R. Murray, commenced negotiations with Company negotiators Neil Plath, General Superintendent; R. A. Holdcraft (newly appointed Secretary); and Frank Sperry, Stone & Webster labor consultant on April 4, 1960. A settlement subject to membership acceptance was reached April 18, 1960.

1245 members employed by Sierra Pacific Power Company overwhelmingly accepted the results of Union and Company negotiators at the April Meeting of the Reno Unit.

The one year pact provides for fringe benefit improvements, increased joint activity in handling safety and apprenticeship problems as well as a general increase. No inequity adjustments were negotiated but fourteen new classifications were established to provide for new duties provided by the expanding operations of the Company. Six of the new classifications were the direct result of new machine accounting procedures now being introduced at Sierra Pacific's Reno Headquarters.

The settlement includes:

- 1. A 4.5 per cent general wage increase to be applied to all classifications, effective May 1, 1960.

- 2. Increased shift premiums from 6 cents to 7 cents on the 2nd shift and 9 cents to 11 cents on the 3rd shift.

- 3. All employees shall be entitled to an additional day off during the ensuing calendar year for any holidays which fall on a non-work day.

- 4. All employees shall be considered to have earned vacations in the previous year of employment and all probationary employees shall be paid applicable vacation allowances upon termination.

- 5. Establishment of a Joint Safety Committee to investigate serious accidents.

- 6. Company shall replace all personal tools worn out in the service of the Company, including safety straps and replaceable gaffs.

- 7. Establishment of a Joint Apprenticeship Committee for the development of entrance requirements and job standards.

- 8. Establishment of 14 new job classifications including jobs for new office procedures.

- 9. Agreement to provide wage protection for demoted employees affected by introduction of new clerical procedures.

- 10. Term of the amended Agreement to run until May 1, 1960.

The 4 1/4 per cent increase will affect some 360 bargaining unit employees with average wage adjustments of 12 cents per hour. The new journeyman electrical rate is \$3.24 per hour, groundman and helpers \$2.47 per hour and fitter-welders \$2.93 per hour.

Bargaining sessions were more complicated this year than normal due to the introduction of machine process in the office. The parties in resolving the problem have established wage protections for employees demoted or displaced by the mechanized processes by "red circling" wage rates for all such employees until they can be placed in jobs with rates equivalent to

# Consumers Power Settles After Six-Week Strike

One of the longest strikes in the history of the utility industry which began on February 29, 1960, was settled a little after midnight on April 7, 1960. Negotiators for the Utility Workers Union and Consumers Power Company in Michigan reached agreement on a job security clause, improved shift differentials, an understanding on the work of contractors, and a wage settlement approximating 21 1/4 cents hourly increase over a two-year period.

The major gains made as a result of the 41-day strike were: Wages were increased 10 cents hourly for all workers

having a grade maximum rate of pay of not more than \$2.50 hourly; those workers with maximum ranging up from \$2.42 to \$3.33 hourly were increased 11 cents an hour. Effective March 1, 1961 all workers were to receive an additional wage increase of 10 cents hourly.

The present pension plan was improved at a cost to the company of approximately 4 3/4 cents per hour.

The job security pension plan was improved at a cost to the company of approximately 4 3/4 cents per hour.

The job security victory was the sweetest of all to the Union because at the start of the strike the company was adamant against any improvement in their present job security clauses. The company finally has agreed with the Union that an employee who has five or more years of service with the company, in the event of any pending

release for lack of work, shall have the right to replace a junior employee in his division or region. Necessary rules to tie this provision in with other seniority and job security provisions of the contract have been reduced to writing and are now inserted in the contract.

The contractual clause on contracting out work was clarified by means of a company letter to the Union.

The Company agreed to an increase of shift differentials.

In addition to the above major gains the company agreed to some 20 minor contractual proposals of the Union such as an increase in the present employees death benefits policies from \$1000 to \$1500.

The total two year cost to the company of the wage and other benefits won by the Union were estimated at between 27 and 28 cents hourly.

## STILL TIME TO GET IN ON ORGANIZING CONTEST

There is still plenty of time to qualify for one of the five-member prizes in the organizing contest. These prizes include:

- Proctor Toaster
- Sunbeam Steam Iron
- Oster Electric Knife Sharpener
- Magic Hostess Electric Can Opener
- Electric Hair Dryer
- Electric Coffee Percolator
- Stainless Steel Tableware (50 pc. service for eight)
- Forty-five piece set Melmac Dinnerware
- Ronson Electric Shoe Shine Kit
- Timex Watch
- Cigarette Lighter
- Leather Wallet or Billfold

Remember—sign up five new members and you win one of these prizes. ALSO—there are five major prizes for the contestants who sign up the most new members in the Contest.

1st prize—Admiral 21" Console Model Color Television Set.

2nd prize—Polaroid Camera and Kit

3rd prize—Admiral Transistor Clock Radio

4th prize—Deluxe Barbecue Set

5th prize—Westinghouse Seven Transistor Portable Radio.

Contest runs until June 30. The prizes are being purchased from U.S.E. Department Store, San Francisco.

their "red circled" rate. These employees will also be granted any future general wage adjustment based on their "red circle" rate.

Business Manager Weakley, in commenting on the settlement, stated, "I feel that it is noteworthy that in meeting new problems such as the mechanization of the Company's book-keeping procedures, the parties have resolved them peacefully and without a lot of public fanfare as we see in many Labor-Management controversies in America today.

"In establishing new classifications and wage rates for the changed office procedures, the impact on incumbent employees had to be met by the parties. It is my opinion that a real effort on the part of Sierra Pacific's management to live up to its responsibilities to employees and the community was shown in our negotiations."

The settlement has met many of the objectives set forth in the recent conference, "Project '60", of Local 1245 in which the membership set forth its belief in furthering human values. Once again the Union and Company have shown that democracy does provide a way for differences to be resolved. It also points up the give and take of collective bargaining where the relationship between Union and Company are based on respect and sincerity.

Our hats are off to both Union and Company negotiators for a job well done.

American workers and their families purchased an estimated \$68,500,000,000 of new life insurance in 1959. This was a record for any year and was about three times the purchases ten years ago.

## 10,000 GET INCREASES AT COMMONWEALTH EDISON

Effective April 1, 1960, some 10,000 clerical and physical employees of Commonwealth Edison, Chicago, Ill., will receive wage increases as a result of negotiations between that Company and the I.B.E.W.

Improvements in the medical insurance program and life in-

urance program, together with the general wage increase, are estimated at 12.94c per hour as a total package. Wage increases will average 12.26c per hour.

The general provisions of the settlement are as follows: General Wage Increase (effective April 1, 1960)

Present maximum rate and increase per hour:

For job max. up to \$2.46	6c
\$2.47 - \$2.67	7c
\$2.68 - \$2.79	9c
\$2.80 - \$3.29	13c
\$3.30 - & over	16c

**Company Contribution to Medical Insurance Program:** Effective with the pay period beginning April 13, 1960, the contribution of the company toward the Medical Expense Insurance Program shall be increased to the extent of 50c bi-weekly for each employee with dependents covered by any plan under such program.

**Double Indemnity Life Insurance:** The company agrees to apply for and seek to obtain at its own expense, a rider of certificate, to be attached to the certificates of insurance issued to active employees under the Life Insurance Program, providing for the payment of double indemnity in the event of accidental death.

**Term of Supplemental Agreement:** The Supplemental Agreement with respect to Major Medical Expense and Life Insurance, shall continue in full force until March 31, 1964.

**Term of Agreement:** The term of the new agreement shall be extended to March 31, 1962, with provision for a re-opener on wages on March 31, 1961.

Membership participation at ratification meetings was extremely high with 73% of the membership voting. The package was ratified on April 11, 1960, although some 45% voted for rejection. The 18 local system council results showed 13 locals accepting and 5 locals rejecting.

## Key System Unit Is Also in Negotiations

Members of Unit 2211 who are employed by the Key System and the various municipalities in the East Bay, like their Brothers in the various other Units throughout the Local Union, find themselves in the midst of negotiations designed to improve their wages and working conditions.

On April 28th the Local Union served notice on the Key System Transit Lines of its desire to open the Agreement for amendment and proposed, in addition to a substantial wage increase, that improvements be made with respect to such matters as vacations, holidays, pensions, health and welfare and over-all working conditions. Concurrently, the Company notified the Union that they wish to extend the Agreement for a three-year period, with only minor changes. This request for a three-year extension to the Agreement comes as somewhat of a surprise inasmuch as the Key System and the Alameda-Contra Costa Transit District have recently signed an agreement wherein the Transit District will take over the Key System properties on or about October 1, 1960.

As reported in the last issue of the "Utility Reporter," requests were submitted to the City of Berkeley with respect to

changes in wages and fringe benefits and discussions are currently going on with the Personnel Board on this matter.

On April 28th, the City Manager of the City of Oakland was notified that the Union was seeking improvement in wages and requesting that the city establish shift differentials and pay the cost of employees' coverage of group health and welfare. To date no meetings have been set to discuss this matter; however, such action should be taken in the very near future.

In the Bureau of Electricity of the City of Alameda, the membership is currently selecting a Negotiating Committee and drafting proposals which will be submitted in the early part of June.

Another matter of considerable interest to the members of Unit 2211 is the forthcoming presentation of a 50-year pin and scroll to Brother Glen Lewis who is retired from the City of Alameda. The Unit plans to honor Brother Lewis in a manner befitting an individual with 50 years membership in our Brotherhood.



Andrew Chris Bateman, a Clerk-Driver from East Bay Division, died May 1, 1960. Bro. Bateman had been a Local No. 1245 member since March 28, 1950.

The average insured American worker and his family had over \$11,500 of life insurance protection at the start of this year. The amount of life insurance owned per family has

Every Member  
An Organized