

PG and E

FOR INTRA-COMPANY USES

DIVISION OR
DEPARTMENT
FILE No.
RE LETTER OF
SUBJECT

NORTH BAY DIVISION

741.5

~~North Bay Division Grievance No. D. Gr/C 4-74-2~~
Gas Crews Procedure for Installing Wire Service
Through Duct.

North Bay Division Grievance No. D. Gr/C 4-74-3
Violation of Title 600

North Bay Division Grievance No. D. Gr/C 4-74-4
Gas T & D Reserve Gas Serviceman Worked Outside Regular
Schedule as Additional Man

North Bay Division Grievance No. D. Gr/C 4-74-5
Violation of Title 600

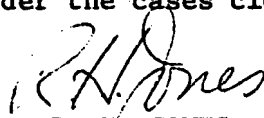
North Bay Division Grievance No. D. Gr/C 4-74-13
P-RC 60, P-RC 63, P-RC 64, P-RC 65 and P-RC 66

September 6, 1974

MR. L. V. BROWN, CHAIRMAN
Review Committee

The above subject grievances, which were returned to the
Joint Grievance Committee on July 9, 1974, were again
discussed by the Committee on August 29, 1974. The
grievances were withdrawn without prejudice by the Union
on the basis that the Division would refer the issues
involved to Mr. I. W. Bonbright for "guidelines" to
follow in the future.

A letter dated today has requested this information and
the Review Committee should consider the cases closed.



R. H. JONES, Chairman
Division Grievance Committee

RHJ/lss

- cc: J. G. Foster
- L. V. Brown
- F. DeGennaro
- R. H. Jones
- ✓ L. N. Foss, IBEW
- C. L. Wheeler, IBEW

PG & E

FOR INTRA - COMPANY USES

DIVISION OR DEPARTMENT NORTH BAY DIVISION PERSONNEL

FILE NO. 741.5

RE LETTER OF

SUBJECT

Request For "Guidelines" to Follow in the Settlement of Five Grievances Returned to North Bay Division by the Review Committee: D. Gr/C Nos. 4-74-2, 4-74-3, 4-74-4, 4-74-5, and 4-74-13.

September 6, 1974

MR. I. W. BONBRIGHT:

The Review Committee recently returned five North Bay Division Grievances which had been referred for their settlement. The Review Committee would not accept four of the grievances due to procedural irregularities and a lack of relevant information surrounding the grievances. The fifth, D. Gr/C 4-74-2, was returned for additional information.

The North Bay Division Joint Grievance Committee, during its meeting on August 9, 1974, again discussed these grievances and the Union has agreed to withdraw them without prejudice. The basis for their action followed agreement by Company members of the committee to submit the issues involved to your office, as per our discussion, for "guidelines" to follow in the future.

Attached are the issues of the subject grievances.

E. A. PETERLE

by 
R. T. BUFKIN

RTB/lss

cc: J. G. Foster
L. V. Brown
F. DeGennaro
R. H. Jones
L. N. Foss, IBEW
C. L. Wheeler, IBEW

1. D. Gr/C 4-74-2

Two inch plastic duct had been previously installed under and across a road, at two adjoining pole locations, prior to paving of the road. A Gas T&D crew later was assigned the work of pushing lengths of #2 Triplex D. B. cable through the ducts. On the pole side end of the duct, the cable was coiled at the base of the pole. At the other end, the cable was direct burial to the meter box location at the houses and pushed into the meter boxes. Is this a proper work assignment for a Gas T&D crew.

2. D. Gr/C. 4-74-3

May the Company require Gas T & D Department employees to repair customer's house sewer lines they break while performing their work. If so, what type of training and equipment should be provided.

3. D. Gr/C 4-74-4:

May the Company assign a Reserve Gas Serviceman to an established 10:00 AM-7:00 PM shift, to work as a Serviceman, when he is not replacing an absent Serviceman but is utilized as an additional man due to an excessive workload.

4. D. Gr/C. 4-74-5:

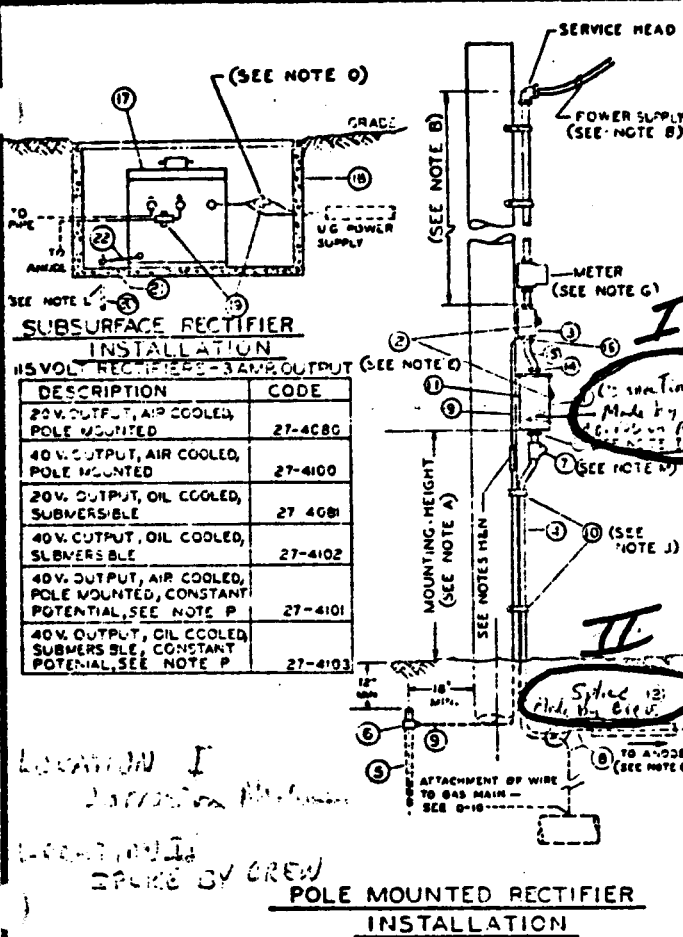
Two splices are required to be made in the wire between an anode and the rectifier in the installation of rectifiers for cathodic protection. The Company contends the first splice can be made by GAS T&D employees in the underground portion of their installation work, and that the last splice, at the rectifier, is work to be performed by Corrosion Mechanics when the rectifier is "placed in operation" (Note D. Gas Standards, Drawing #283583, Chg.4- Attached). The Union contends both splices are to be made by Corrosion Mechanics.

5. D. Gr/C 4-74-13:

The Company contends that the 12-hour rest period, referred to in the Labor Agreement Clarification, Subject: Title 202-Hours-Relief Service Operators, Page 5, Paragraph B-2, applies to Relief Service Operators when they are performing relief for absent Service Operators and an 8-hour rest period should apply after a Relief Service Operator has been performing Serviceman's duties, and will return to work performing those same duties.

We, the undersigned, agree that the above issues are correctly stated.

For the Union C. L. Wheeler For the Company R. T. Bufkin
C. L. Wheeler R. T. Bufkin



BILL OF MATERIAL FOR POLE MOUNTED RECTIFIERS			
ITEM	QUAN.	DESCRIPTION	CODE NO.
1	1	RECTIFIER, AIR COOLED, SEE TABLE	
2	2	PADLOCK, CORPORATION.	17-3040
3	1	SWITCH, SAFETY, FUSIBLE, SCREW TYPE, HAINLIGHT, 240 V.A.C., 30 AMP., CUTLER-HAMMER NO 4144H3341	34-9951
4	AS REQ.	CONDUIT, RIGID, STEEL, GALVANIZED, OR EQUAL, WITH 1" HUB,	1" 39-C120
5	1	GROUND ROD, 5/8" x 8 FT.	18-7013
6	1	CLAMP, GROUND ROD, 5/8"	18-7012
7	1	SEAL, CONDUIT, CROUSE HINDS, CHICO A-24, SEE NOTE M	
8	AS REQ.	WIRE, AWG NO. 10, INSULATED R.H.W. & N. 600 V	29-4376
9	AS REQ.	WIRE, GROUNDING, AWG NO. 6, BARE COPPER	29-0072
10	AS REQ.	STRAPS, PIPE, GALVANIZED	1" 17-6004
11	AS REQ.	LAG SCREWS, STEEL, GALVANIZED, 1/4" x 2-1/2"	19-6022
12	AS REQ.	CONDUIT, PLASTIC, PVC, 1/2" SCHEDULE 40	36-0368
13	2	LOCKNUT, CONDUIT, GALVANIZED, T & B NO 143, 1"	39-0289
14	1	WATER TIGHT CONDUIT HUB, EFCOR #40-50 OR EQUAL, 1/2"	
15	1	NIPPLE, CONDUIT, OFFSET, T & B NO 1180, 1/2"	39-0866
16	1	BUSHING, CONDUIT, GALVANIZED, T & B NO 322, 1/2"	39-0101

BILL OF MATERIAL - SUBSURFACE RECTIFIERS			
ITEM	QUAN.	DESCRIPTION	CODE NO.
17	1	RECTIFIER, SUBMERSIBLE, SEE TABLE	
18	1	13" x 24" PRE-CAST CONCRETE BOX WITH BASE 12" EXTENSION, PLAIN COVER AND LOCKDOWN LID	K42-1
19	2	WATERPROOF, FUSIBLE DISCONNECT 30 AMP, TRON, HEB TYPE A OR EQUAL.	34-9954
20	1	GROUND ROD, 5/8" x 8 FT	18-7013
21	1	CLAMP, GROUND ROD, 5/8"	18-7012
22	AS REQ.	WIRE, GROUNDING, AWG NO 6, COATED COPPER	29-1016

NOTES:

- A. INSTALL RECTIFIER CABINET AT EYE LEVEL IF LOCAL CONDITIONS PERMIT. IN AREAS EXPOSED TO PEDESTRIANS OR VEHICLES, MAINTAIN 8 FOOT MINIMUM BETWEEN BASE OF RECTIFIER AND GROUND LEVEL.
- B. ELECTRIC SERVICE IS TO BE INSTALLED FROM THE SECONDARY TO THE SAFETY SWITCH BY THE ELECTRIC DEPARTMENT.
- C. PROTECT THE WIRE FROM THE BASE OF THE POLE TO THE ANODE(S) AND TO THE PIPE WITH PLASTIC CONDUIT WHERE SUBJECT TO DAMAGE FROM SHARP ROCK, DIGGING, GOPHERS, ETC.
- D. THE RECTIFIER WILL BE PLACED IN OPERATION ONLY AT THE DIRECTION OF A QUALIFIED ENGINEER OR QUALIFIED CORROSION MECHANIC.
- E. THE RECTIFIER, SAFETY SWITCH COVER AND SAFETY SWITCH HANDLE MUST BE SECURED WITH A CORPORATION LOCK.
- F. WIRE FROM RECTIFIER TO ANODE(S) AND GAS MAIN TO BE AWG NO. 10 FOR OUTPUT OF 6 AMPERES OR LESS. INCREASE WIRE SIZE FOR GREATER CURRENT OUTPUT AS REQUIRED.
- G. THE ELECTRIC METER IS TO BE INSTALLED WHEN THE RECTIFIER CURRENT RATING IS IN EXCESS OF 50 AMPERES OR WHEN POWER IS NOT SUPPLIED BY P.G.&E.
- H. MAKE CONNECTION FROM GROUND ROD TO SOLID NEUTRAL BUS INSIDE DISCONNECT SWITCH BOX.
- I. ALL BUSHINGS, LOCKNUTS AND FITTINGS SHALL BE MADE WRENCHTIGHT.

- J. THE MAXIMUM DISTANCE BETWEEN RIGID CONDUIT SUPPORTS SHALL BE 5 FEET.
- K. RESTRICT RECTIFIER INSTALLATION TO ONE QUADRANT OF THE POLE. SELECT QUADRANT IN CONJUNCTION WITH ELECTRIC DEPARTMENT.
- L. FOR SUBMERSIBLE RECTIFIERS, GROUND RECTIFIER CASE IF IT IS METALLIC.
- M. FILL CONDUIT SEAL WITH CROUSE HINDS, CHICO A-24 COMPOUND AND FIBER.
- N. THE GROUNDING WIRE IS TO BE ENCLOSED IN A MOLDING, OR ACCORDING TO LOCAL CODE REQUIREMENTS.
- O. FOR SUBSURFACE RECTIFIERS THE WATERPROOF FUSIBLE DISCONNECT IS TO BE INSTALLED IN THE AC. HOT LEG (BLACK WIRE).
- P. CONSTANT POTENTIAL RECTIFIER REQUIRES A SEPARATE REFERENCE. CONTACT GAS DISTRIBUTION DEPARTMENT.

I = SPICE MADE BY CORROSION MECHANICS
II = SPICE MADE BY T & D CREWS

APPROVED	4	12-10-73 Notes N, O and P added. Detail redrawn, table added; Bill of Material Revised.	AKAC, JMK, WH, GM
	3	7-5-72 Revised title, changed S&S Sta. #2 from N-211 to O-111	AKK, M.E., J.P.
	2	7-2-69 Item 2 corrected code	JK
	1	4-1-69 Item A changed R.H.W. & N. 600V. Item 10 changed Code No.	J.P.

SUPERV. BY	
DSGN.	
DR. J. AUSTIN	
EN. B.F.J.	
O.K.	
DATE	SCALE
6-5-66	NONE

ELECTRICAL EQUIPMENT-DETAILS
CATHODIC PROTECTION SPECIFICATION FOR RECTIFIERS
GAS STANDARD
PACIFIC GAS AND ELECTRIC COMPANY
 SAN FRANCISCO, CALIFORNIA

SUPERSEDED 282342, N211	
SUPERSEDED BY	
SHEET NO.	SHEETS
283583	4
DRAWING NUMBER	CHANGE