



PG&E talks set to resume

Local 1245 and Pacific Gas and Electric were scheduled to resume contract negotiations on March 10, more than six weeks after talks broke down.

"Our bargaining committee has a number of proposals to address concerns our members raised about the previous Table Agreement," said Business Manager Perry Zimmerman, referring to a company offer that was overwhelmingly rejected by union members last December.

The union's committee had planned to put its new proposals on the table on Jan. 23. But the union walked out of negotiations when the company proposed a re-vote on the original Table Agreement, claiming that union members hadn't understood it.

Union buttons and fliers proclaiming "Understand THIS" have been prominent at PG&E yards and service centers since the talks broke down.

"The union will come to the table and make a good faith effort to resolve our differences with the company. We think it's in everyone's best interest to negotiate an agreement that recognizes the extraordinary contribution our members have made to this company," said Zimmerman.

Updates on bargaining developments can be found on-line at:

www.hr/ibew (PG&E Intranet)
www.ibew1245.com (Internet)

Union organizes Roseville tree trimmers

Local 1245 has bargained a first contract for Asplundh Tree employees performing line clearance tree trimming for the City of Roseville.

The union overcame initial resistance by Asplundh management to win recognition through a card check process. The new members ratified the first agreement by a unanimous vote conducted on Feb. 6 by Senior Business Rep. Ray Thomas and Business Rep. Jack Osburn.

"These employees have gained two or more dollars an hour compared to the pay they were receiving working for the previous contractor



NEW BARGAINING UNIT
Local 1245's newest bargaining unit: Asplundh line clearance tree trimmers working at the City of Roseville. Business Rep. Jack Osburn is on the right.

Page 3 ▶

Sierra Pacific Power continues to struggle

Local 1245 members at Sierra Pacific Power remain in a state of high anxiety as Sierra's parent company struggles to stay afloat.

Sierra Pacific Resources stock fell to \$3.05 a share on Feb. 20 and hovered around the \$3 mark for the remainder of February.

"Our members are worried," said Local 1245 Business Rep. Randy Osborn. "The company's financial health is a constant issue."

Besides concern over their employment, many members have a substantial amount of Sierra Pacific stock in their 401K plans. Retirees also hold a lot of company stock, according to Osborn.

Sierra Pacific's current economic troubles are only the latest set of

worries to beset the approximately 750 employees in Local 1245's bargaining unit. They have gone through failed attempts to merge with Washington Water & Power and Portland General Electric, a completed merger with Nevada Power, state-ordered divestiture of generation, repeal of state-ordered divestiture of generation, and then the energy crisis of 2000-2001, leading to the financial difficulties of 2003.

"It's got to be tough on employees," said Osborn.

The union recently retained lobbyists to monitor new developments in the Nevada Legislature, especially any bills that might make it easier for customers to drop Sierra Pacific Power as their energy supplier. Cur-

rent law allows customers using one megawatt or more to leave the Sierra system. There could be a move in the legislature to make it possible for customers using less than one megawatt to leave Sierra, or to allow smaller customers to aggregate their demand in order to reach the one megawatt threshold.

Another issue of concern to the union is the composition of the state's Public Utilities Commission. A bill in the last legislative session increased the number of PUC commissioners from three to five. A proposal now under consideration would restore the three-person commission, but would require the chairman to be a

Page 3 ▶

Feature



SMUD:
Making Linemen 10-11

Sierra Pacific
Head Room 12

Inside

Your Union
Ready for the Next Round 2

Electric Deregulation
Behind the Dereg Debacle 4-7

Staff Directory
Business Rep Contact Info 8-9

Safety Matters
Bush Shorts Job Safety 13

Women at Work
No Help for Working Families 14

MARCH 8

PG&E Stewards Conferences
Systemwide

MARCH 15

PG&E Stewards Conferences
Walnut Creek, CA (for GC)
San Francisco, CA

MARCH 21

Service Awards
Redding, CA

MARCH 22

Service Awards
Oroville, CA

APRIL 4

Service Awards
Rohnert Park, CA

APRIL 5

Service Awards
San Luis Obispo, CA

APRIL 7

Deadline for Local 1245
Trade & Vocational School Grant

APRIL 11

Service Awards
San Jose

APRIL 26

Service Awards
Reno, NV

Ready for the next round

By Perry Zimmerman, Business Manager

I am writing on Thursday, March 6. Much may change between the time I write this and the time you read it.

By the time you read this column, the United States may have invaded Iraq. If that happens, I believe our issues, our priorities, and our world will change for years in ways that we cannot imagine today.

By the time you read this column, the provocations by North Korea may have escalated beyond the already frightening levels that exist as I write. Again, the consequences cannot be predicted.

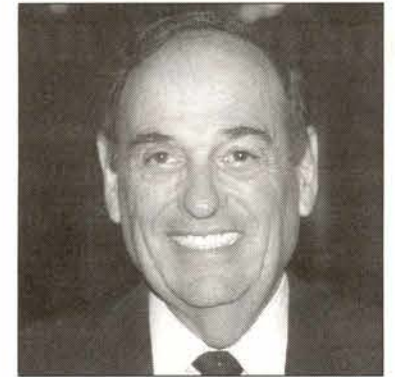
Back at the ranch, sometime in the next few days, PG&E will announce its performance incentive payouts for non-bargaining unit em-

ployees. The PG&E National Energy Group has already announced performance incentive payouts starting at 14%. If I had to guess, I would guess that the utility will announce generous PIP numbers. PG&E is essentially financially healthy, and I would not be surprised by PIP payments that reflect this fact. This will, I believe, strengthen our position in bargaining with PG&E this month.

On March 8 and March 15, members of my staff will meet with PG&E shop stewards throughout the system. For the first time in years, our staff and shop stewards now have the attention and support of a large majority of the dues paying members. I don't know what will come out of those steward conferences, but I know that something will, and I would guess that it will be good.

On Monday, March 10, there is a settlement conference in PG&E's bankruptcy case, ordered by Judge Montali. As soon as PG&E announced on February 24 that it may have to sell up to \$700 million in common stock to make its Plan of Reorganization work, I sensed that the pressure would mount on PG&E and the California Public Utilities Commission to settle the case. I don't know what will happen on March 10—maybe something momentous, maybe nothing at all. By the time you read this column, you may already know.

On March 10 we return to the bargaining table with PG&E for the first time in two months. Swift and widespread pressure by our members, fueled by outrage at the company's suggestion that our members simply had not understood the October table agreement, has brought PG&E back to the table. In the



months since the October table agreement, Sierra Pacific Power and Southern California Edison have concluded labor agreements, and those agreements help our argument with PG&E, as do the recent equity increases negotiated for climbing classifications at SMUD. I don't know what will happen in the coming negotiations with PG&E. By the time you read this, a lot more may already be known.

Sometime in the near future, PG&E plans to move Family Tree Trimming crews into the Point Arena and Fort Bragg areas, replacing Davey Tree union crews. Family Tree is not only non-union, it is anti-union. By the time you read this column it may already be clear what kind of a reception Family Tree receives from our PG&E members.

The point is simple—there is much more in play than usual, and events are unfolding rapidly. I think all of us are ready for the next round to begin.

Of all that is in play, there is nothing more important than the active interest and participation of our members. More than anything else, unions give their members the ability to exert some control over their working life. This was manifested in the many actions taken by our PG&E members in late January and early February to protest the company's position on bargaining, by the participation of more than twenty members in our Future is Now training at the local union headquarters in late February, and by the hundreds of shop stewards who will be attending training in the next two weeks. Nothing is more important right now than the continued support of our members.

Let's see what the future brings.



WJCA
WESTERN JOURNAL OF COMMUNICATIONS AND MEDIA

UtilityReporter

March 2003
Vol. 52 No. 3
Circulation: 23,400



**Business Manager &
Executive Editor**
Perry Zimmerman

**Communications Director &
Managing Editor**
Eric Wolfe

President
E. L. "Ed" Mallory

Executive Board
Michael J. Davis
Chris Habecker
Dave Scott
Anna Bayless-Martinez
Kathy F. Tindall
John Mendoza

Treasurer
Ron Moon

Published monthly at 3063 Citrus Circle, Walnut Creek, California 94598. Official publication of Local Union 1245, International Brotherhood of Electrical Workers, AFL-CIO, P.O. Box 4790, Walnut Creek, CA 94596.

Periodical postage paid at Walnut Creek and at additional mailing offices. USPS No. 654640, ISSN No. 0190-4965.

POSTMASTER: Please send Form 3579, Change of Address, and all correspondence to Utility Reporter, P.O. Box 4790, Walnut Creek, CA 94596.

Single copies \$1. Subscription by arrangement. Have you moved recently? Please send complete new address and your Social Security Number (by U.S. Mail) to: "Address Change", IBEW Local 1245, P.O. Box 4790, Walnut Creek, CA 94596. Our Web Site can be viewed at www.IBEW1245.com. Our phone number is (925) 933-6060.

Sierra Pacific financial woes

► From Page 1

consumer advocate. Unfortunately, consumer advocates all too often have failed to grasp the connection between reliable service and adequate funding for electric utilities.

The current downturn in Sierra Pacific's stock began on Feb. 12 following an announcement that the company was issuing \$300 million in debt that can be converted into common stock. The drop in share prices could reflect investor concerns that the convertibility of the new debt will eventually dilute the value of existing shares.

The convertible notes could be exchanged for common stock in the company at \$4.56 a share within six months regardless of the market price of the stock at that time, according to a report in the Las Vegas Review-Journal.

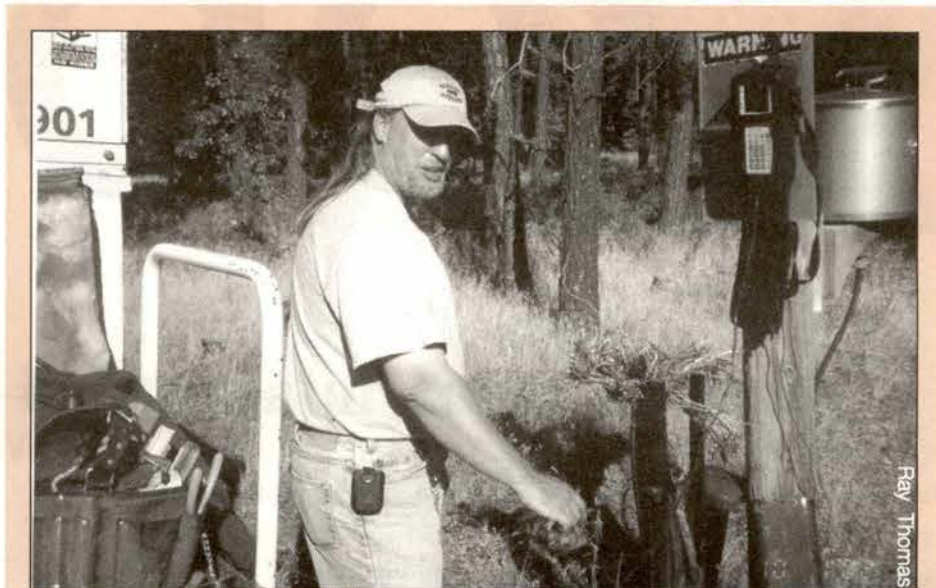
Staves Off Crisis

The issuing of debt "staves off a potential liquidity crisis given Sierra Pacific's inability to otherwise meet its debt-service obligation," according to a Standard & Poor's analysis.

A week prior to issuing the debt, Sierra Pacific announced it would issue 13.66 million shares of common stock.

The company announced on Feb. 10 that it had suffered a fourth-quarter loss of \$39.5 million, or 39 cents per share. For the year Sierra Pacific lost \$307.5 million, or \$3.01 a share.

The losses stemmed in part from unfavorable decisions in rate cases for Sierra Pacific Power and Nevada Power. Regulators denied \$434 million in Nevada Power's requested increases and \$57 million in Sierra Pacific Power's requested increases.



FRONTIER MAINTENANCE SPLICER
Frontier Communications Maintenance Splicer Mark Wilson, a 10-year member of Local 1245, is shown here working last fall on communications lines at a repeater in Burney, Ca.

Dave Crawford: New Outside Rep

Local 1245 has hired Dave Crawford as a Business Representative for Outside Construction.

Crawford, who replaces Vern Brown, will represent Outside Construction members in the union's northern jurisdiction.

Crawford has been an IBEW member for 13 years. Most recently he has worked as a journeyman lineman for International Line Builders, as well as for PG&E General Construction in the Sacramento area.

We welcome Brother Crawford to the union staff.

Unit Updates

Unit 3316, Fallon, Nev, is a new unit that meets every other month at Fallon Country Club, 2655 Country Club Dr., at 5:30 pm. Meeting day is Tuesday. Dates for upcoming meetings are: April 8 and June 10.

Randy Osborn,
Business Rep.

Local 1245 organizes tree trimmers at City of Roseville

► From Page 1

on a non-union basis," said Thomas. "They've also gained a very affordable medical plan, an employer-paid pension, seniority provisions and a grievance procedure with binding arbitration."

The road to union recognition began in 2002, when the tree trimmers approached Local 1245 seeking representation. At the time, the tree trimmers were employed by Davey Tree, which was performing the work under contract with the City of Roseville. Local 1245 Business Rep. Junior Ornelas began collecting union authorization cards from the employees.

But in late 2002, Asplundh Tree won the bid to perform the work for Roseville, replacing Davey Tree. Ornelas rounded up a new set of authorization cards specifying the new employer.

Asplundh did not immediately embrace the idea of union representation for its employees working in Roseville. Following a tense labor-management meeting in Fresno dealing with issues on Asplundh's PG&E properties, the company's regional manner suggested to Thomas that the company wouldn't welcome the union's presence in Roseville.

The City of Roseville, however, favored a fair deal for tree trimmers working on its properties, which

strengthened the union's hand.

Osborn helped recruit David Martinez, an Asplundh employee working on City of Roseville properties, to participate in bargaining taking place in December between Local 1245 and Asplundh. The bargaining covered tree trimming work performed by Asplundh for Modesto Irrigation District. The union had obtained permission from the regional manager to have Martinez participate, but when negotiations began, the new Asplundh Labor Relations Manager from company headquarters in Pennsylvania asked Martinez to leave the room.

"We agreed to it," said Thomas, "but the union committee made it

very clear at that time that Asplundh employees at Roseville were going to become unionized tree trimmers."

Card check recognition was finally achieved for the Asplundh employees at the City of Roseville on Feb. 5. Employees quickly ratified the first agreement the following day.

"These five individuals are a great group of employees," said Thomas. "They are highly respected for their talent by both the City of Roseville and Asplundh."

Employees covered by the new agreement are Aaron Holt, David Martinez, Andrew Atkinson, Miguel Villalovos and Artoro Aguilari.

Debate



“I want to know how you’re going to provide training to people who will provide service in the future—because the experienced people are leaving.”

*Barbara Saunders, Local 1245
CPUC hearing, San Jose
September 1994*

The Commission did not simply fail to understand basic economic theory ... it failed to give the impacts of losing thousands of utility employees even a passing thought.

C.U.E., October 2002

IBEW warned that electric deregulation was doomed from the beginning

In May of 1994, IBEW Local 1245 and its partners in the Coalition of California Utility Employees (CUE), warned the California Public Utilities Commission that electric deregulation was an ill-advised experiment that courted disaster. Many Local 1245 members, as shown on these pages, sounded similar warnings at public hearings in the fall of 1994. Our warnings were ignored.

In January of 2003 the CPUC finally closed its docket on deregulation, an experiment that has cost California consumers untold billions and put California utility workers through nine years of hell. Closing the docket was a minor procedural act—not an actual end to deregulation in California. In fact, electric deregulation could spring back to life under plans now being fashioned by the Federal Energy Regulatory Commission.

But closing the docket gave the Coalition of California Utility Employees a chance to explain once again why deregulation was doomed to fail from the very beginning. Our comments, filed in October 2002, were read into the CPUC record in January 2003 by Commissioner Carl Wood. They are reprinted here as a cautionary tale.

BEFORE THE PUBLIC UTILITIES COMMISSION OF THE STATE OF CALIFORNIA

COMMENTS OF THE COALITION OF CALIFORNIA UTILITY EMPLOYEES ON CLOSING THE ELECTRIC RESTRUCTURING DOCKET

Pursuant to the ALJ’s October 2, 2002 Ruling, the Coalition of California Utility Employees offers these comments on the ALJ’s question concerning “the need to continue with these proceedings.” Although the ALJ presents the question in a dry procedural ruling, the question is profound, as should be the answer. The Commission should close this deregulation proceeding, not just because there is no continuing need for it, but also because it was a disaster for ratepayers, utilities and their employees.

I. DEREGULATION WAS AN ECONOMIC DISASTER

A. Ratepayers Lost Billions of Dollars

This Rulemaking and Investigation resulted in the most expensive public policy mistake in the history of California. The Commission’s almost religious belief in market forces rather than regulation created an epic disaster for ratepayers. In each of 2000 and 2001, Californians spent \$20 billion more for electricity than in 1999. The Commission abandoned its obligation to set rates in favor of “the magic of the market,” as Commissioner Fessler was fond of saying. If there was any magic at all, it was black magic. Regulation by this Commission *never* cast such a horrible spell on Californians as the reliance on market forces.

When California began the deregulation fiasco, the exaggerated claim by proponents in 1994 was that California’s rates were 50 percent above the national aver-

age. Never mind that California's **bills** were **below** the national average. Even if rates were the only factor that mattered (and higher rates to support programs for low income customers and renewable energy were ignored), it would have taken several **decades** of higher regulated rates to equal the costs imposed on ratepayers by just two years of market-based rates.

B. Utilities Lost Billions of Dollars and their Financial Standing

The impacts on the investor owned utilities from the deregulation experiment were also a disaster. Both PG&E and Edison incurred billions of dollars of debt, and then suffered a worse fate. They lost their standing in the financial community. Not only did this destroy enormous shareholder value, it crippled the ability of the Commission to implement programs that benefit California. The compact between investors and the Commission was broken. Decades of good credit and good faith vanished, and it will take many years to repair the damage.

C. Thousands of Utility Jobs were Eliminated

Utility employees are part of a culture dedicated to serving customers. They believe they should do whatever it takes to keep the lights on. They routinely demonstrate their commitment after storms and earthquakes. Typically, they spend their career in the business, gaining experience and training new employees. Deregulation stripped the utilities and their customers of a valuable asset – thousands of the most experienced employees.

The Commission that began the deregulation fiasco was oblivious to the damage to the utility workforce it would inflict. The Blue Book did not even contain the word "employee." The Commission did not simply fail to understand basic economic theory, as with the premise of deregulation, it failed to give the impacts of losing thousands of utility employees even a passing thought.¹

II. DEREGULATION WAS A RELIABILITY DISASTER

In addition to market forces siphoning tens of billions of dollars from California, blind faith in the market caused a previously unheard of degradation in reliability. During 2001, California experienced several days of actual blackouts and many days of "voluntary" interruptions. Many

businesses lost millions of dollars of production. Not for at least 40 years had California experienced blackouts from inadequate generation supply. Such events were previously considered intolerable. Regulated vertically integrated utilities never abused customers the way market based generators did in 2001.

Not only was the system reliability under market-based rates intolerable, the actual reliability of individual plants operating in a market-based system were dramatically, indeed spectacularly, worse than under cost-based regulation. The outage rates of market-based plants averaged **15.5% higher** in 2001 than in 1999. Overall, outages increased by **402%**.

The employees operating these plants have identified one reason for this extraordinary increase in forced outages. When a system of generating plants is operated by a vertically integrated utility, it will operate most generating units as base load units, and use only a few units to follow load. Units are not often ramped up or down. This method of operation minimizes wear and tear on the units.

However, when ownership is dispersed among many owners who are responding to hourly, or even shorter duration, changes in multiple product markets, units are repeatedly ramped up and down. Many experienced plant operators have observed the damaging effects of the changed operation on outage rates. Ramping also degrades thermal efficiency, causing increased air pollution, and increasing overall system costs.

There are other reasons that may contribute to the dramatically higher forced outage rates. At the plants formerly owned by Pacific Gas & Electric and Southern California Edison that went from regulated to market based rates, workforce levels were reduced by an average of 35%. Even if the physical operation of the plants had not changed dramatically, massive reductions in maintenance staff would surely increase the outage rate.

Of course, claims have been made that the increased outage rates experienced in California were not based on genuine maintenance problems, but were sham outages designed to increase market prices. If true, the conclusion does not change: Plants operating in a market system have much higher outage rates. Competition by generators **reduces** reliability because it increases wear and tear on power plants and reduces maintenance staffing.

The Commission's almost religious belief in market forces rather than regulation created an epic disaster for ratepayers. In each of 2000 and 2001, Californians spent \$20 billion more for electricity than in 1999. The Commission abandoned its obligation to set rates in favor of "the magic of the market," as Commissioner Fessler was fond of saying. If there was any magic at all, it was black magic.

C.U.E., October 2002



"The residential ratepayers are not going to save a dime."

**Anthony Araya, Local 1245
CPUC hearing, Martinez
September 1994**



“You don’t go to the unemployment office to hire someone to take care of a ruptured gas main or arcing wires in the street.”

**Jim Findley, Local 1245
CPUC hearing, Martinez
September 1994**

Utility employees are part of a culture dedicated to serving customers. They believe they should do whatever it takes to keep the lights on. They routinely demonstrate their commitment after storms and earthquakes. Typically, they spend their career in the business, gaining experience and training new employees. Deregulation stripped the utilities and their customers of a valuable asset – thousands of the most experienced employees.

C.U.E., October 2002

► From Page 5

III. THE DEREGULATION DISASTER WAS PREDICTABLE AND PREDICTED

No one should have been surprised that when supply was tight, market prices for electricity skyrocketed and reliability plummeted. Nor should anyone be surprised that we have already seen both a boom and a bust in power plant construction. What happened was not only predictable, it was predicted. No amount of tinkering with market design can fix the problem. It is inherent in **any** market system for electric generation. As we wrote on June 8, 1994, in CUE’s first comments on the Blue Book:

While the Commission’s proposal relies on the benefits of competition and free markets, it does not consider other, universally accepted, features of competitive markets. One of those features, which is particularly important in a market characterized by long lead times before suppliers can enter, is the **business cycle**. The Commission should carefully consider the predictable effects of introducing this basic feature of competitive markets to the retail electricity market.

In neo-classical economic theory, free markets are sufficient to balance supply and demand (or, in electric industry terminology, resources and loads). If supply is less than demand, prices rise, causing demand to drop and eliciting new supply until supply and demand are back in equilibrium. If supply exceeds demand, prices drop, demand rises and the most expensive suppliers stop selling, again causing supply and demand to come back into equilibrium.

Neo-classical theory, however, ignores the questions of what causes disequilibrium in the first place, how long it takes to re-attain equilibrium, and what happens to prices during the period of disequilibrium.

The answers to these questions have been well studied for the case of markets which are characterized by long lead times for new supply. The answers are most easily explained by example. In agricultural commodity markets, there are products like avocados which must be planted years before they can be harvested for the first time and which require substantial investment (in tree

planting and tending, in the case of avocados) prior to receipt of any revenues. For such markets, there is a long lag time between the commitment to new supply and its realization.

In avocado markets, as in other commodity markets with high capital requirements and long investment lead times, boom and bust cycles are a normal fact of free-market life. When supply exceeds demand, new supply can not be brought on-line immediately (though trees can be planted immediately, and are). So equilibrium must be obtained by demand reduction, which occurs because of skyrocketing prices. Those prices, in turn induce suppliers to plant more trees in hopes of continued high prices. In a few years, when the newly planted trees mature, prices plummet as everyone tries to sell avocados at once.

Electricity supply shares with avocado supply the characteristics of requiring a large investment with a long lead time to provide new supply. This means decisions and capital investments in an unregulated electric generation market would have to be made based on individual investors’ expectations of future load/resource balance and prices. Even if some investors correctly anticipate future conditions, there is no reason to expect the sum of all investment decisions to accurately match future conditions. The mismatch between investors’ collective expectations and reality is the initial seed for disequilibrium.

Once disequilibrium occurs, there are two possibilities. Either supply would fall short of demand (at then-prevailing prices) or it would exceed demand. In the first case, reliability would suffer until equilibrium is re-established. In addition, prices would rise above the equilibrium level as consumers seek to find short-term resources to protect themselves from the supply shortfall. Because of the long lead time nature of most generating resources, short lead time resources would be few and far between, and hence very expensive. **Businesses and residential users could face escalating prices and brown-outs.**

On the other hand, if supply exceeds demand, some generation would have to be idled (as with perishable commodities, there is no way to store large quantities of electricity for long periods of time). **Trained, experienced workers, often with unique skills, would be**

lost. Individual generator owners would cut their prices to keep their particular plants from being the ones that are shut down. Because much of the cost of generation is capital costs rather than operating costs, direct access suppliers would be able to cut prices to well below their long-run costs of operation to stay in operation. So the market clearing price for electricity in times of oversupply can fall as low as the short-run variable cost of fuel and O&M, well below the long-run marginal cost which represents an equilibrium price according to classical theory.

Whether disequilibrium occurs in the form of over or under-supply, it would hold the seeds of its reverse. Undersupply and the resulting high prices would tempt new entrants into the market, hoping that high prices would still exist years later when their facilities come on line. By the time they do, the combined effect of all the new entrants and consumers' price responses (e.g., conservation) would cause the undersupply disequilibrium to reverse to an oversupply disequilibrium. Oversupply and the resulting low prices would cause bankruptcy or at least financial losses to suppliers, discouraging new investment and leading to undersupply in the future.

Boom and bust markets are accepted and understood as a natural consequence of free-market economics for avocados. But for electricity supply, which is a much more central part of the industrial infrastructure, commodity market-type pricing would introduce undesirable volatility and uncertainty, and would discourage new investment by businesses which use electricity. Boom and bust cycles would make it difficult to retain the dedicated, highly trained workforce which is necessary to assure reliability, and which the public now enjoys. These cycles would undermine the Commission's goal of encouraging economic growth in California.²

Although this describes much of what we experienced in the past three years, and we are proud of the comments we filed, CUE was not prescient. This is standard economic theory. Other economists made similar predictions.³ The Commission blindly ignored standard economic theory in favor of a naïve and simplistic belief in "competition."

Although poorly designed market rules

or the exercise of market power may have exacerbated the impacts of a tight supply, the fundamental problem is inherent in the market itself. If subject to only market forces, electric generation will exhibit boom and bust cycles. So long as it takes several years to build a power plant and electricity cannot be effectively stored in times of surplus, these cycles, and the resulting shortages and high prices, are inevitable. Deregulated generation cannot be any other way.

The very premise of the Commission's deregulation – market forces should control the supply and price of generation – was predicted to fail and it did.

IV. CONCLUSION

The Commission should close this deregulation proceeding, not just because there is no need for it, but also because it was a disaster for ratepayers, utilities and their employees. The Commission should also acknowledge that the policy decisions made in this docket were fundamentally wrong.

Dated: October 16, 2002
Respectfully submitted,

Marc D. Joseph
Adams Broadwell Joseph & Cardozo
Attorneys for the Coalition of California Utility Employees

Footnotes:

¹ CUE succeeded in mitigating the impacts of the Commission's ignorance on employees, with employee transition costs (Public Utilities Code § 375), but the Commission never considered the impacts on customers from forced shrinking of the utility workforce.

² Comments Of The Coalition Of California Utility Employees On Competitive Premise, Regulator's Role And Marketplace Implications, June 8, 1994, pp. 16-20 (emphasis added).

³ Severin Borenstein and James Bushnell, *Electricity Restructuring: Deregulation or Reregulation?*, Regulation, Cato Review of Business and Government, Vol. 23, No. 2, 2000, p.44, 49, <http://www.cato.org/pubs/regulation/regv23n2/boren.pdf>; ("Even absent market power, inelastic demand and supply will naturally lead to high prices at peak times as demand rises above the production capacity of generators in a market and further price increases bring forward little additional supply or reduction of demand.")

If subject to only market forces, electric generation will exhibit boom and bust cycles. So long as it takes several years to build a power plant and electricity cannot be effectively stored in times of surplus, these cycles, and the resulting shortages and high prices, are inevitable. Deregulated generation cannot be any other way. The very premise of the Commission's deregulation – market forces should control the supply and price of generation – was predicted to fail and it did.

C.U.E., October 2002



"Twenty-two hours after the Loma Prieta earthquake I was restoring power using my own vehicle, even though my own home was six miles from the epicenter and suffered over \$75,000 in damage. I felt I had a duty to serve the public in a time of disaster. What the PUC is proposing is a disaster."

**Tom Hutchinson, Local 1245
CPUC hearing, San Jose
September 1994**



Ken Ball
740 Fairfax Dr.
Salinas CA 93901
Home Office: (831) 424-2800
Union Hall: ext. 351

- PG&E Factfinding, Pre-Review



Bill Brill
P.O.B. 24643
San Jose CA 95154
Home Office: (408) 979-1825
Union Hall: ext. 320

- PG&E De Anza Division, San Jose Division (except Call Center), Central Coast Division



Phil Carter
P.O. Box 1080
Rocklin CA 95677
Home Office: (916) 632-1752
Union Hall: ext. 357

- PG&E: Sierra Division/Drum (except Placerville), Sierra Division/Colgate, including Hydro
- Yuba County Water Agency



Ed Caruso
P.O. Box 1647
Pittsburg CA 94565
Home Office: (925) 432-6578
Union Hall: ext. 353

- Relief Assignments



Rich Cowart
P.O. Box 747
Cloverdale CA 95425
Home Office: (707) 894-0803
Union Hall: ext. 308

- PG&E North Coast Division
- Adelpia Communications (Ukiah & Ft. Bragg)
- Resort Improvement District #1 (Shelter Cove)
- City of Ukiah
- City of Willits
- Northern California Power Agency



Dave Crawford
P.O. Box 4790
Walnut Creek CA 94596
Home Office: NA
Union Hall: ext. 306

- Outside Construction (Northern Area)



Ed Dwyer
P.O. Box 1410
Hanford CA 93232
Home Office: (559) 587-9594
Union Hall: ext. 345

- PG&E portions of Fresno Division (Coalinga, Lemoore, Corcoran), Kern Division, California Gas Transmission (Topock to Walnut Creek)
- Citizens Communications/Needles
- Lindmore Irrigation District



Arlene Edwards
P.O. Box 1016
Yuba City CA 95992
Home Office: (530) 755-1600
Union Hall: ext. 374

- PG&E Sacramento Call Center, West Sacramento Payment Processing Center, Stockton Credit Center, Colusa, Davis, Table Mountain, Oroville, Meridien



Sam Glerio
P.O. Box 2763
Elk Grove, CA 95759
Home Office: (877) 885-9034 pg
Union Hall: ext. 302

- Sacramento Municipal Utility District
- City of Lodi
- Sacramento Regional Transit
- US Bur. of Reclamation (w/ Dennis Seyfer)
- Western Area Power Administration



Mike Grill
P.O. Box 20933
Bakersfield CA 93390
Home Office: (661) 663-7972
Union Hall: ext. 378

- PG&E Fresno Division (except Call Center), Yosemite Division, Los Banos
- Merced Irrigation District



Mike Haentjens
P.O. Box 1032
Pismo Beach CA 93449
Home Office: (805) 489-4546
Union Hall: ext. 361

- PG&E General Construction (Southern Area); Coast Valleys Division



Gary Hughes
P.O. Box 7125
Stockton CA 95267
Home Office: (209) 478-0931
Union Hall: ext. 364

- PG&E Stockton Division (except Credit Center), California Gas Transmission
- South San Joaquin
- Tri-Dam Project



Jeff Johnstone
P.O. Box 4790
Walnut Creek CA 94596
Home Office: (760) 240-5877
Union Hall: ext. 375

- Outside Construction (Southern Area)



Dan Lockwood
1063 El Moro Avenue
Los Osos CA 93402
Home Office: (805) 528-4930
Union Hall: ext. 362

- PG&E Los Padres Division, Diablo Canyon Power Plant
- Duke Energy – Moss Landing Power Plant and Morro Bay Power Plant

IBEW Local Union Representatives



Bob Martin
P.O. Box 4790
Walnut Creek CA 94596
Home Office: (925) 754-2341
Union Hall: ext. 203

- Technology
- Relief Assignments



Landis Marttila
P.O. Box 4790
Walnut Creek CA 94596
Home Office: (415) 469-9903
Union Hall: ext. 304

- PG&E San Francisco Division (Electric), Peninsula Division (Electric)



Debbie Mazzanti
P.O. Box 4790
Walnut Creek CA 94596
Home Office: (925) 776-5210
Union Hall: ext. 350

- PG&E San Francisco General Office, Fresno Call Center, San Jose Call Center



Lynne Morel
P.O. Box 2496
Castro Valley CA 94546
Home Office: (510) 538-8660
Union Hall: ext. 373

- City of Santa Clara
- Alameda Power & Telecommunications
- City of Oakland
- AC Transit
- City of Berkeley
- Modesto Irrigation District
- Turlock Irrigation District
- Port of Oakland



Darryl Norris
P.O. Box 293684
El Dorado Hills, CA 95829
Home Office: (916) 688-3637
Union Hall: ext. 330

- PG&E Sacramento Division (except Davis, Call Center and Payment Processing Center), Placerville
- PG&E Gas Transmission Northwest



Junior Ornelas
P.O. Box 2231
Vacaville CA 95696
Home Office: (707) 454-0603
Union Hall: ext. 344

- Tree trimmers (Southern Area)

To leave a message for a Union Representative at union headquarters, call (925) 938-7200

CAL 1245 REPRESENTATIVES



Randy Osborn
3235 #8 East Lake Blvd.
Carson City NV 89704
Home Office: (775)834-6838
Union Hall: ext. 377

- Sierra Pacific Power (except generation)
- Plumas Sierra REC
- Truckee Donner PUD



Jack Osburn
P.O. Box 1589
Marysville CA 95901
Home Office: (530)742-6119
Union Hall: ext. 369

- Frontier
- Verizon
- City of Roseville
- Bella Vista Water District
- City of Gridley
- City of Redding (Electric & Maintenance)
- City of Shasta Lake
- Clear Creek Community Services District
- Lassen Municipal Utility District
- Oroville-Wyandotte Irrigation District
- Richvale Irrigation District



Larry Pierce
P.O. Box 6048
Santa Rosa CA 95406
Home Office: (707)578-7274
Union Hall: ext. 370

- PG&E North Bay Division
- City of Healdsburg



Roy Runnings
14700 Brian Road
Red Bluff CA 96080
Home Office: (530)529-6638
Union Hall: ext. 324

- PG&E General Construction (Northern Area)



Santiago Salazar
P.O. Box 19325
Reno NV 89511
Home Office: (775)834-6840
Union Hall: ext. 303

- Sierra Pacific Power (generation)
- Avista Gas
- City of Fernley
- Mt. Wheeler Power
- Wells REC
- Citizens Communications & Verizon/Elko
- Truckee Meadows Water Authority



Frank Saxsenmeier
P.O. Box 639
Sonoma, CA 95476
Home Office: (707)939-7611
Union Hall: ext. 338

- PG&E Factfinding, Pre-Review Committee



Bernard Smallwood
P.O. Box 2831
Dublin CA 94568
Home Office: (925)361-5185
Union Hall: ext. 371

- PG&E Peninsula Division (Gas), San Francisco Division (Gas), Mission Division



Veodis Stamps
P.O. Box 53258
Riverside, CA 92517
Home Office: (909)276-2748
Union Hall: ext. 363

- Outside Construction (Southern Area)



Hunter Stern
P.O. Box 460337
San Francisco CA 94146
Home Office: (415)282-9042
Union Hall: ext. 346

- PG&E General Construction (Central Area)
- Mirant Steam Generation
- Foster-Wheeler



Kit Stice
P.O. Box 7328
Chico CA 95927
Home Office: (530)342-9798
Union Hall: ext. 354

- PG&E North Valley Division/Shasta, North Valley Division/De Sabla, North Valley Division/Colgate, California Gas Transmission (Willows to Burney)
- Paradise Irrigation District



Ray Thomas
P.O. Box 492817
Redding, CA 96049
Home Office: (530)547-1193
Union Hall: ext. 356

- Tree Trimmers (Northern Area)



Lula Washington
P.O. Box 5027
Richmond CA 94805
Home Office: (510)223-7135
Union Hall: ext. 381

- PG&E East Bay Division, Diablo Division



Eric Wolfe
P.O. Box 4790
Walnut Creek CA 94596
Home Office: (415)564-4410
Union Hall: ext. 316

- Communications
- Relief Assignments

Business Manager/ Financial Secretary



Perry Zimmerman
Business Manager
P. O. Box 4790
Walnut Creek 94596
Union Hall: ext. 212

Administrative Staff



Tom Dalzell
Senior Assistant Business Mgr.
P. O. Box 4790
Walnut Creek 94596
Home Office: (510) 525-5984
Union Hall: ext. 307



Bob Choate
Assistant Business Manager
P. O. Box 4790
Walnut Creek CA 94596
Home Office: (925) 671-0914
Union Hall: ext. 305



Richard Dunkin
Assistant Business Manager
37799 Millwood Dr.
Woodlake CA 93286
Home Office: (559) 564-8271
Union Hall: ext. 233



Dorothy Fortier
Assistant Business Manager
P. O. Box 1613
El Cerrito CA 94530
Home Office: (510) 848-6714
Union Hall: ext. 315



Jim McCauley
Assistant Business Manager
P. O. Box 4790
Walnut Creek CA 94596
Union Hall: ext. 210



Manny Mederos
Assistant Business Manager
P. O. Box 51643
Pacific Grove CA 93950
Home Office: (831) 375-4127
Union Hall: ext. 309



Dennis Seyfer
Assistant Business Manager
P. O. Box 4790
Walnut Creek 94596
Union Hall: ext. 238



Roger Stalcup
Assistant Business Manager
P. O. Box 848
Arnold CA 95223
Home Office: (209) 795-6060
Union Hall: ext. 311



Howard Stiefer
Assistant Business Manager
P. O. Box 4790
Walnut Creek 94596
Union Hall: ext. 322



Sam Tamimi
Assistant Business Manager
P. O. Box 4790
Walnut Creek 94596
Union Hall: ext. 334

5) 933-6060, then enter the Rep's extension.

Making Linemen

SACRAMENTO MUNICIPAL UTILITY DISTRICT

You might think becoming an apprentice lineman at the Sacramento Municipal Utility District is about acquiring a set of skills that will keep you alive and keep the power on.

And no doubt, that's a big part of it.

But there's more to becoming a lineman than simply gaining the lineman's know-how. If you want to climb poles and test your nerves against live conductors, you best be prepared to acquire the lineman's culture.

It starts from Day One. There's *the ribbing*. The teasing. The names you'd rather not be called.

"We put a little pressure on them and see what they can take. If you can't get 'em through it, they're not going to make it [as a lineman]," says Instructor Mike Bazil.

Last summer, when this interview was conducted, Bazil and the other instructors were finding ways to challenge seven new recruits in the last of four introductory weeks at the training ground. First Aid and CPR come early in the curriculum, a sobering reminder that their chosen career is inherently dangerous.

But the instructors aren't trying to teach fear. They're trying to teach you how to overcome it.

"They have to get over the fear of heights," says Bazil. "The first week they have to climb a 30-foot pole. By the end of the first week they have to climb a 35-foot pole and hang a crossarm at the top."

Waiting for them the second week is a 45-foot pole.

"We're instilling the culture of the lineman, being able to climb poles, overcome the fear of heights," says Tom Mullally, a Heavy Line Crew Foreman who serves as Lead In-

Story & Photos
by Eric Wolfe



Pre-Apprentice Michael Dankert, Pre-Apprentice Chuck Helms and Instructor Aaron Rudi

structor at the school. "We treat 'em the way these veteran linemen are going to treat 'em."

The apprentices know they haven't signed up for a degree in sensitivity training. If they don't know it, they find out real quick.

"We don't coddle them," says Mullally. "The ribbing, the teasing, when they're trying to do something—a lot of times we'll get vocal and put pressure on them, because there's going to be pressure on the

job."

Following their first four weeks with Mullally, Bazil and fellow Instructors Aaron Rudi and Greg James, the trainees go out on the job. For at least the first year, they're working on the ground.

When it's time to start their apprenticeship, they come back to the training ground for 6-9 months of "cold" training. They get to try their hand at tearing down and building up structures. There aren't any live



Instructor Mike Bazil (left) and Pre-Apprentice Jason McEwen



Chris Andrieu, Hot Apprentice

electric lines involved, hence the term cold training.

"Then they go out as a crew to help other crews for a couple of months," says Basil. Then it's back to the training ground for 2-3 months of "hot" training. If you get this far, you've become a hot apprentice.

"They fall out of the nest and go with different crews," observes Basil. They've become part of the workforce. Or, as Basil puts it, "They start earning their pay."

From the start of cold training to turning journeyman lineman is a three-year process. It's no walk in the park.

"If you don't feel the rush, being at the top of the pole, if you don't feel the thrill, it's not worth going through the torture," acknowledges Basil.

Some drop out. But many rise to the challenge. In fact, some people seem to thrive in this peculiar environment of dizzying heights, deadly electric currents, and exacting physical labor.

We call these people linemen.

In their world you'll find specific values, just as you would in any culture. You'll find people who have a high degree of confidence in their ability to do the job, obstacles be damned. You'll find great personal courage in the face of routine danger. You'll find a commitment to keeping the lights on that far transcends breezy corporate slogans and regulatory standards.

"They put their own pressure on themselves to excel," Basil says of apprentice linemen. "They've got that pride of knowing that guy ahead of them is doing it and they want to do it, too."

Mullally says the training is a bonding experience for the apprentices. Culture, after all, isn't something you acquire on your own. It's something that happens when people are together.

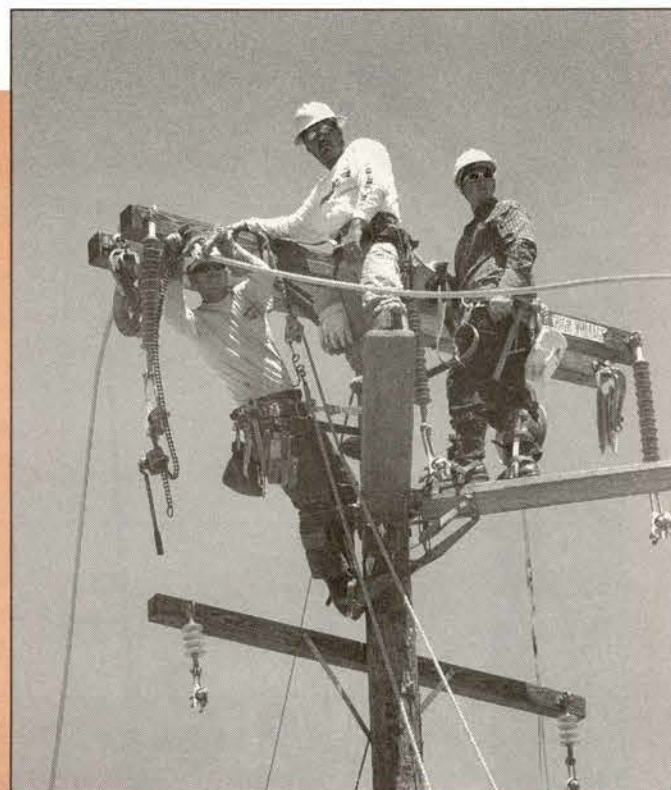
And it happens by design at training facilities like the one operated by SMUD and other utilities around the country.

"The product we get from the training is so good we don't want to change it," says Mullally. "They've got a lot of drive, they work hard for you. You get a good employee."

You get a lineman.



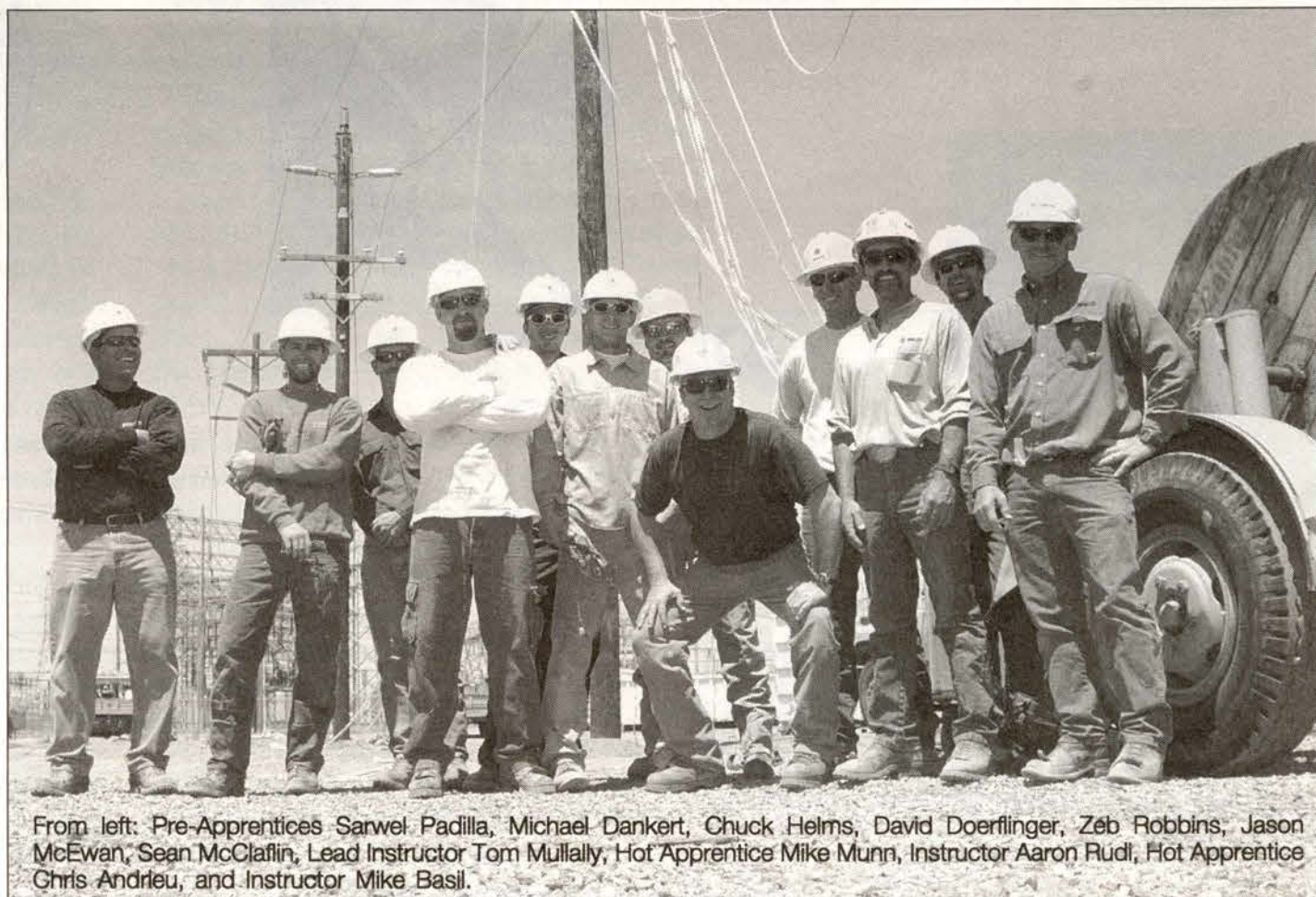
Pre-Apprentice David Doerflinger



Hot Apprentice Mike Munn, Pre-Apprentice Sean McClafin, and Pre-Apprentice Zeb Robbins



Lead Instructor Tom Mullally (left) and Don Kreuter.



From left: Pre-Apprentices Sarwel Padilla, Michael Dankert, Chuck Helms, David Doerflinger, Zeb Robbins, Jason McEwan, Sean McClafin, Lead Instructor Tom Mullally, Hot Apprentice Mike Munn, Instructor Aaron Rudi, Hot Apprentice Chris Andrieu, and Instructor Mike Basil.



Garrett Smith and Dwayne Gerred

Head Room



Garrett Smith

SIERRA PACIFIC POWER



Stan Coulson



Garrett Smith, Rick Smith, Dwayne Gerred, and Stan Coulson

Electric power lines are such an integral part of the landscape, you might not even notice they are there. Until you suddenly have a need to put something up in the air and discover that the power lines got there first.

Last summer in Reno, Nev., Sierra Pacific Power linemen were called on to move an overhead line to make some head room for cranes that needed to get into position to build a new bridge.

Performing the work were Apprentice Lineman Dwayne Gerred, Linemen Garrett Smith and Stan Coulson, and Foreman Rick Smith.

Photos by Eric Wolfe

Bush budget shorts job safety

Worker health and safety is pushed to the back burner by the federal budget proposed by President Bush for Fiscal Year 2004.

Does this mean that occupational disease and death are under control and no further improvements are needed? Hardly.

Each year more than 6 million American workers are injured or become sick on the job. Fifty thousand American workers die from occupational illness, and nearly 6,000 are killed on the job.

The Bush administration's proposed budget for the Occupational Safety and Health Administration (OSHA) would cut funds for safety and health standards development, federal enforcement, worker safety and health training grants and safety and health statistics. The proposed budget would cut 77 OSHA positions.

For the second year in a row, President Bush has proposed slashing the budget for the National Institute for Occupational Safety and Health (NIOSH). Under the proposal, NIOSH's budget would be cut by \$30.5 million from the current funding level of \$276.5 million.

The cuts in the NIOSH and worker safety and health research FY 2004 budget are proposed at the same time increases are being proposed for most other health research agencies.

The administration has failed to request any additional funds in the Centers for Disease Control (CDC) budget to fund programs and activities related to bioterrorism and homeland security. No increase in funding is requested to implement the administration's smallpox vaccination program that calls for the vaccination of 500,000 health care workers and 10 million first responders.

Protections extended for disabled

In a victory for millions of disabled Californians, the state Supreme Court ruled Feb. 20 that the state's anti-discrimination laws provide far greater protection than the widely applied federal standard.

By a unanimous vote, the seven justices held that the state broadly defines who is disabled, covering anyone who is merely "limited" in a major life activity—a far looser standard than the federal benchmark. The decision opens the state's courthouse doors to workers suffering from chronic back pain, carpal tunnel syndrome, depression and other diagnosable ailments.

In recent years, the U.S. Supreme Court has drastically limited the scope of the federal Americans with Disabilities Act—to the point where disability rights groups say they have no choice but to turn to the state courts.

The court rejected the argument by a Los Angeles employer that the state expanded the definition of disabled only after a 2001 law went into effect. The court said that legislation clarified that the state law is much broader than the federal ADA—and has been since at least 1992, when the Legislature first amended its definition.

Safety Tailboard

Receive an IBEW cup and cap for submitting a safety question selected for publication in Safety Tailboard. Safety Tailboard is an open forum for discussion and learning about safety issues. Submit your question, along with your name and phone number, to:

Safety Tailboard,

c/o Jim McCauley, IBEW 1245, PO Box 4790, Walnut Creek, CA 94596

Congratulations to Ross Phillips of Turlock Irrigation District, whose safety question was published in the January Utility Reporter.

By the Local 1245
Safety Committee



Falls: major cause of death

While I was roofing my house and moving a sheet of plywood, a gust of wind sprang up and I found myself sailing off the roof. Fortunately, the sail effect of the plywood actually helped me to a landing in the grass.

This incident demonstrates how easy it is to succumb to a fall. Falls lead all other causes of unintentional occupational death.

Falls account for the greatest number of fatalities in the construction industry. The risks are increased by the very nature of construction. The incomplete structure poses risks of roof openings, trenches, electrical cords, slip and trip hazards, and scaffolding. Towers, structures, poles and the ever-present ladder contribute to the hazards of every day work.

We are exposed to these hazards daily and need to be aware constantly. Being aware of your surroundings could save you from an

injury. Thinking about where you are—and what could potentially happen to you—should go a long way in helping you work safe.

Safety issues should be brought to your supervisor's attention immediately. But don't think the job is done there! Make the site as safe as possible before you leave, for the good of your fellow workers.

Use your harness to protect you from falls whenever possible. Injuries sustained by a fall depend on the height of the fall and the nature of the landing surface. Inspect your harness before use, as you would your rubber gloves. Make sure your harness will protect you from a free fall of no more than six feet. Think about how far the fall is to the surface below and adjust the lanyard accordingly.

Falls can be prevented if you remain aware of the potential hazard.

Ralph Muraca



©2002, UCS
"Remember to punch out with your one good arm, Stritch."

Current members of the Local 1245 Safety Committee: Stoney Burk, Alameda Power & Telecomm.; Keith Hopp, Pacific Gas & Electric; Ralph Muraca, City of Santa Clara; Al White, Pacific Gas & Electric; David Vipond, Citizens Communications; Rich Lane, Turlock Irrigation District; Art Torres, Sacramento Municipal Utility District; and Assistant Business Manager Jim McCauley.



Bush budget no help to working families

WOMEN WORKERS' HISTORY

Strike over pay cut

Passaic, N.J. was a major center of fine woolens production in the 1920s. Its mills employed more than 16,000 workers, most of them immigrants from southern and eastern Europe. Half were women who earned less than \$15 a week, working 10-hour shifts at an inhuman pace.

Many of the women worked nights; in fact, husbands were employed days on the condition that their wives would work nights. (New Jersey had a law banning night work by women, but woolen manufacturers ignored it.) Typically, a woman worker would put her children to bed and be on the job by 8 p.m. She would be home after 6 a.m. in time to prepare breakfast for the family. Then came housework, marketing, cooking dinner and somehow, sleep.

JUST WHEN YOU THINK THINGS COULDN'T GET WORSTED...



Botany Worsted Mills, the largest employer, imposed a 10% wage cut in October 1925, despite enjoying super-high profits from already low wages. Other manufacturers followed suit.

There was little protest. Unions had no real presence in Passaic. A United Front Committee of Textile Workers, organized by the Trade Union Education League, urged workers to resist the pay cut.

Although a Botany worker had already been fired for United Front activity, a committee of 45 workers went to see Colonel F.H. Johnson, company manager, to demand an end to the pay cut, time-and-a-half for overtime, and no discrimination against union supporters. Johnson fired the entire committee.

Word raced through the mill. Within hours, 4,000 workers were on strike. Within weeks, that number would almost quadruple!

(Continued next month)

President Bush's budget for the 2004 fiscal year cuts programs that help working families while providing enormous tax cuts for wealthy Americans that will put the government in debt for years to come.

Bush's proposed cuts include:

- Eliminating guaranteed coverage from Medicaid.
- Cuts to vocational education that helps workers find new jobs.
- Cutting kids from school lunch programs.
- Making it harder for poor families to get the earned-income tax credit.
- Cuts to rural development.
- Cuts to family literacy programs.

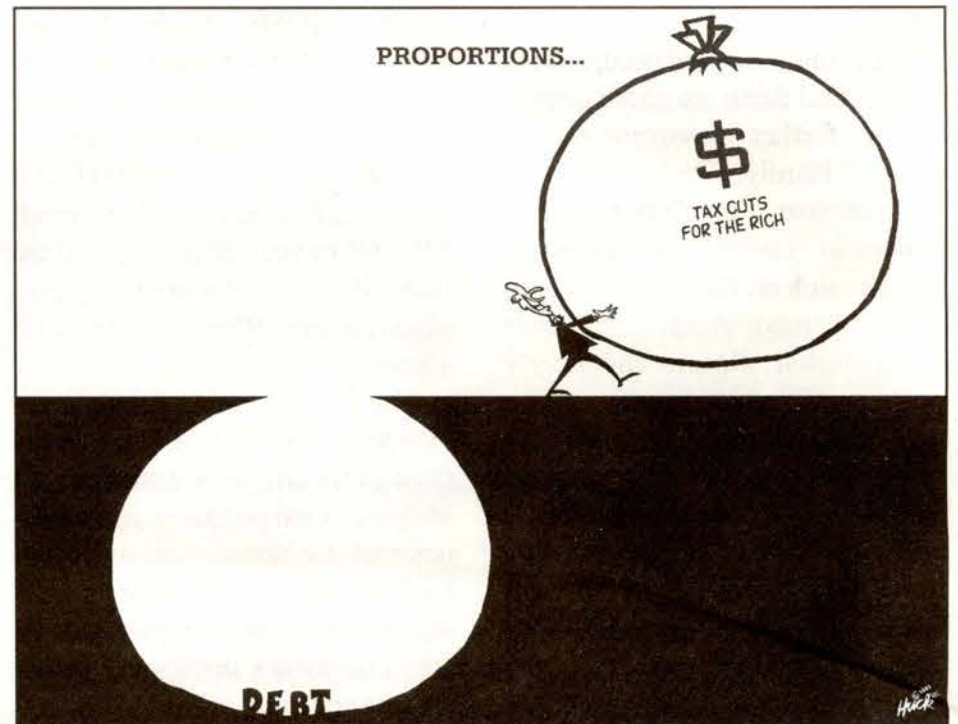
Do these budget cuts indicate that Bush is trying to exert fiscal responsibility? Consider this:

The Bush budget proposes \$1.5 trillion in new tax cuts over the next 10 years, threatening to plunge the country into debt for years to come. Bush's budget projects record-breaking deficits for 2004 and 2005, and deficits every year through at least 2008, the last year for which the administration made projections.

The benefits of Bush's tax giveaways go overwhelmingly to the richest Americans, while the majority of cuts like the ones described above hurt low- and middle-income families and children.

The debt created by the Bush tax giveaways will hit the middle class the hardest. Increased interest rates could raise the cost of buying a home, paying off school loans, and paying credit card bills. Bush is passing the

The top 1% of American taxpayers—making \$374,000 or more annually with an average income of \$1.1 million—would save more than \$30,000 a year in taxes under the Bush plan. But typical taxpayers—those with incomes of \$29,000 to \$46,000 a year—would save only \$289.



deficits to the next generation.

According to an analysis by the nonprofit group Citizens for Tax Justice, the top 1% of American taxpayers—making \$374,000 or more annually with an average income of \$1.1 million—would save more than \$30,000 a year in taxes under the Bush plan. But typical taxpayers—those with incomes of \$29,000 to \$46,000 a year—would save only \$289. And those making between \$16,000 and \$29,000 would keep just \$99.

The Bush administration has asserted that "92 million taxpayers would receive, on average, a tax cut of \$1,038 in 2003." This is misleading because the administration has averaged the big tax cuts for the rich

with the tiny tax cuts going to everyone else.

Denying relief to working families and the states, the Bush plan fails to give the economy the immediate boost it badly needs to save and create jobs. At the same time, the tax cut plan threatens to drag down the economy in years to come, costing \$676 billion over 10 years, with interest costs adding at least \$250 billion for a total price tag of at least \$925 billion, according to the Center on Budget and Policy Priorities.

While the rich have the luxury of being able to save their tax breaks, working families generally need to spend them immediately, which stimulates the economy. The Bush plan steers more cash to the people least likely to actually spend it.

The dividend tax cut also is unfair to the majority of stockholders—working Americans who own stock only through retirement plans, including 401(k) retirement plans. When they eventually cash out 401(k)s to have money for their retirements, under the Bush proposal they will still pay taxes on the dividends that accrued in their plans.

No relief in sight for prescription drug costs

Do seniors have any hope of seeing a meaningful prescription drug program emerge from the current administration in Washington?

It seems unlikely, according to George Kourpias, president of the Alliance for Retired Americans, which represents millions of retired union members.

Many weeks ago, prior to his State of the Union address, President Bush announced a plan to privatize Medicare and force seniors to join managed care programs if they wanted a prescription drug benefit. Understandably, that idea provoked an angry response from seniors who are increasingly pinched by soaring prescription drug costs.

More recently, says Kourpias, a second plan floated by the president still tries to make seniors leave traditional Medicare and the doctors they

trust if they want insurance coverage that helps with the costs of the medicines they need.

"Seniors do not want to, nor should they have to, leave Medicare to get affordable prescription drugs," says Kourpias.

Medicare is the nation's largest, most efficient, most successful health insurance system serving the needs of almost 40 million seniors and disabled beneficiaries.

"Seniors don't want to leave Medicare. Seniors don't want to leave the doctors they trust," says Kourpias.

Questions About Bush Plan

Many questions remain about Bush's proposal:

What will it cost? How will it be paid for? Why is the administration not sending details of the plan to the Congress?

Kourpias says the Bush adminis-

tration is more concerned about protecting the profits of big drug companies than providing seniors with lower drug prices.

"Seniors don't want gaps and gimmicks," says Kourpias. "They want real solutions to a very real problem. Seniors should not have to wait any longer and they should not have to join a private insurance plan and worry about being denied coverage."

An alternative to the Bush plan is the Medicare Rx Drug Benefit and Discount Act being offered by Rep. Charles Rangel of New York and Rep. John Dingell of Michigan.

Kourpias says the Alliance for Retired Americans supports the Rangle-Dingell plan "because it meets the needs of seniors and allows them to stay in traditional Medicare and still get the medicines they need at a price they can afford."

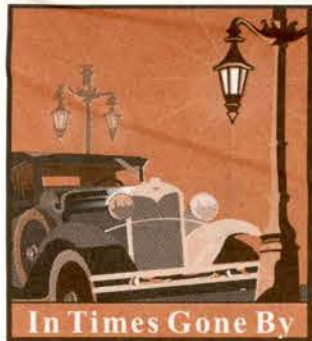


Make a Date...

The Local 1245 Retiree Club invites you to join us for companionship, discussion and projects. Current meeting locations are:

East Bay Chapter: meets 2nd Thursday each month, 10 a.m., at Local 1245 headquarters, 3063 Citrus Circle, Walnut Creek, CA.

San Jose Chapter: meets 1st Thursday each month, 10 a.m., at IBEW Local 332, 2125 Canoas Garden, San Jose.



In Times Gone By

'65



IBEW 1245 Archive, courtesy Benny Diridoni



IBEW 1245 Archive, courtesy Benny Diridoni

Installing a 4-inch gas main in Auburn in 1965 was the crew of Pete Moon, Foreman; Benny Diridoni, O.A. Welder; Ed Sanches, MEO-B; Bob Wolfe, Equipment Operator.

Growing old, not demented

A new Mayo Clinic study shows that dementia is not an inevitable part of growing old.

Recent research demonstrates that for many age 90 and above, memory can be strikingly sharp. The researchers found a significant proportion of people in their nineties to be free of Alzheimer disease or other forms of dementia. Others became memory impaired, but without full dementia, allowing them to remain relatively independent.

Just because you're in your 90s does not mean you'll be living in a nursing home or developing dementia, concluded Bradley Boeve, MD, a Mayo Clinic neurologist and lead author of the new report, appearing in *Neurology*.

Boeve said that at least half of those studied looked pretty normal, and that some performed in the superior range on cognitive tests even when compared with much younger individuals.

AFL-CIO NATIONAL BOYCOTTS



JANUARY/FEBRUARY 2003

BUILDING MATERIALS & TOOLS

JET EQUIPMENT & TOOLS, INC.
Auburn, Wash., distributor of "JET" brand metal- and wood-working power and hand tools for home and commercial use
▶ *International Brotherhood of Teamsters*

ENTERTAINMENT & RECREATION

BIG LEAGUE THEATRICALS ROAD COMPANY
Performing the "The Music Man"
▶ *Actors' Equity Assn./American Federation of Musicians*

BLACK ENTERTAINMENT TELEVISION
BET cable television, Action pay-per-view, Bet on Jazz
▶ *International Brotherhood of Electrical Workers*

ECHOSTAR DISH NETWORK
Satellite Television Service
▶ *Communications Workers of America*

FOOD & BEVERAGES

ALGOOD FOODS
Reeses Peanut Butter
▶ *International Brotherhood of Electrical Workers*

DIAMOND WALNUT CO.
Diamond brand canned and bagged walnuts and walnut pieces
▶ *International Brotherhood of Teamsters*

MT. OLIVE PICKLE CO.
Pickles and relishes sold under the Mt. Olive and other labels, including the Food Lion and Harris Teeter supermarket "house" labels
▶ *Farm Labor Organizing Committee*

PICTSWEET MUSHROOM FARM
Fresh mushrooms and frozen vegetables with the Pictsweet label
▶ *United Farm Workers of America*

PLEASE POST

TRANSPORTATION & TRAVEL

BEST WESTERN-GROSVENOR RESORT
Hotel in Lake Buena Vista, Fla.; located at Disney World, but separately owned and operated
▶ *Hotel Employees & Restaurant Employees International Union*

FOUR POINTS BY SHERATON
Hotel in Waterbury, Conn.
▶ *Hotel Employees & Restaurant Employees International Union*

HOLIDAY INN SUNSPREE HOTEL
Hotel in Kapaa, Hawaii
▶ *International Longshore & Warehouse Union*

NEW OTANI HOTEL & GARDEN
Hotel in downtown Los Angeles
▶ *Hotel Employees & Restaurant Employees International Union*

OTHERS

CF&I STEEL and OREGON STEEL MILLS, INC.
Steel, including rod, bar, rail, pipe and steel plate
▶ *United Steelworkers of America*

GRAPHIC PACKAGING OF KALAMAZOO
Packaging materials
▶ *PACE International Union*

R.J. REYNOLDS TOBACCO CO.
Cigarettes: Best Value, Camel, Century, Doral, Eclipse, Magna, Monarch, More, Now, Salem, Sterling, Vantage, and Winston; plus all Moonlight Tobacco products
▶ *Bakery, Confectionery, Tobacco Workers & Grain Millers International Union*